

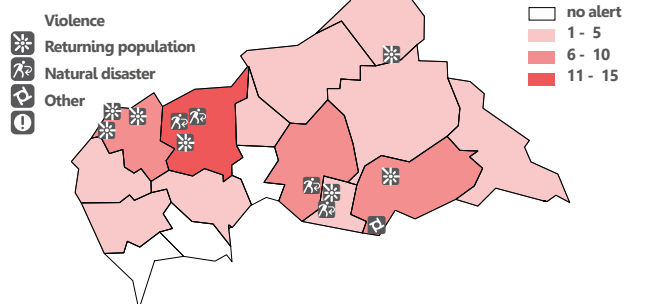


The Rapid Response Mechanism (RRM) is designed to monitor humanitarian action, conduct multisector assessments (MSAs) of needs and to implement several types of emergency responses, including distributions of essential non-food items (NFIs) and high emergency biscuits (HEBs), emergency water, sanitation and hygiene (WASH) interventions, as well as cash transfer programming (CTP). Currently, the RRM is made possible through the support of the United States Agency for International Development (USAID/BHA), the Directorate-General for European Civil Protection and Humanitarian Aid Operations (DG ECHO), the Swiss Agency for Development and Cooperation (SDC) and the Swedish International Development Cooperation Agency (SIDA). All RRM products are available on the [Humanitarian Response](#) portal.

## Alerts received or sent by the RRM in 2022

### Alert distribution in June 2022 :

Location and types of alerts in June 2022



**12** alerts  
in June 2022

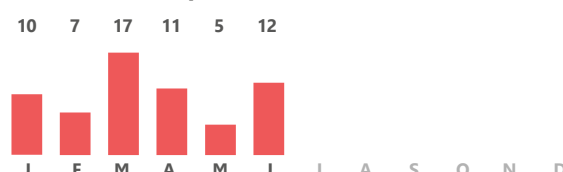
**62** alerts  
since January 2022

Median delay  
between alert and  
intervention<sup>1</sup> :  
**22** days

### Types of alerts in 2022:



### Number of alerts per month in 2022:

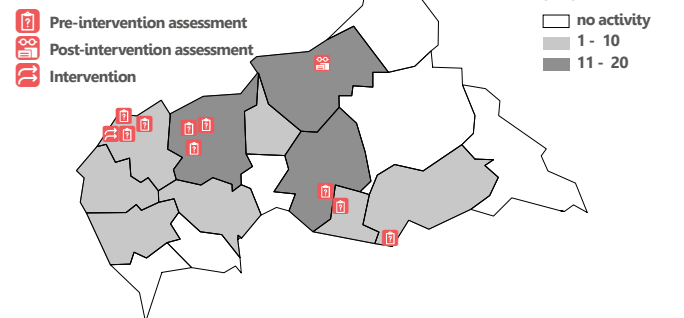


## Overview of RRM activities in 2022<sup>1</sup>

### Activity distribution in June 2022 :

(MEX<sup>2</sup>, MSAs, SMART<sup>3</sup>, NFI and HEB distributions, WASH interventions, CTP, PDM<sup>4</sup>)

Location and types of activities in June 2022



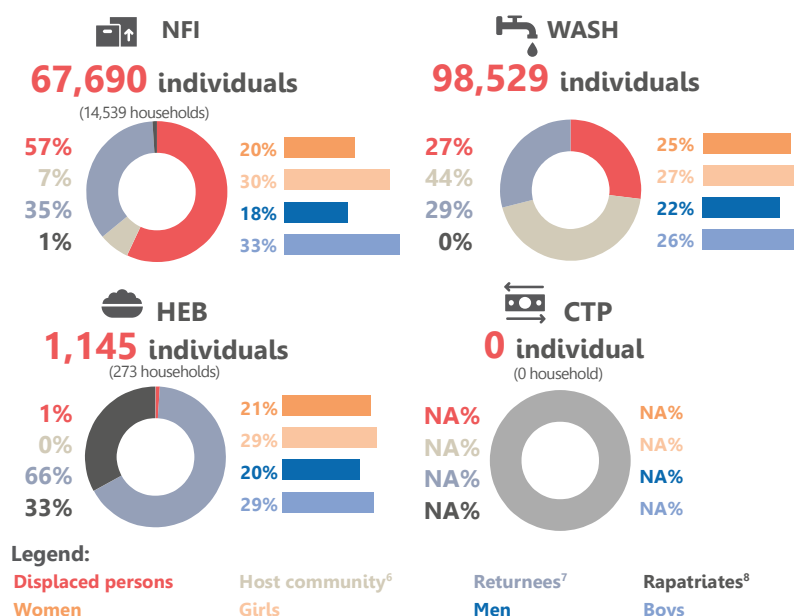
### RRM activities in June 2022:



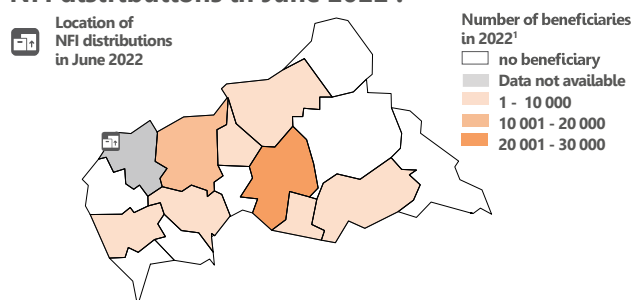
### Activities in 2022 :

MEX	20	Cash distribution	0
MSAs	19	Sensitization sessions on hygiene	84
MSA-R <sup>5</sup>	1	Emergency latrines	50
NFI distributions	21	Rehabilitations of water sources	107
WASH interventions	19	Distributed hygiene kits	14,539
HEB distribution	1	PDM <sup>4</sup>	10
Voucher distribution	0	Rapid SMART <sup>3</sup>	3

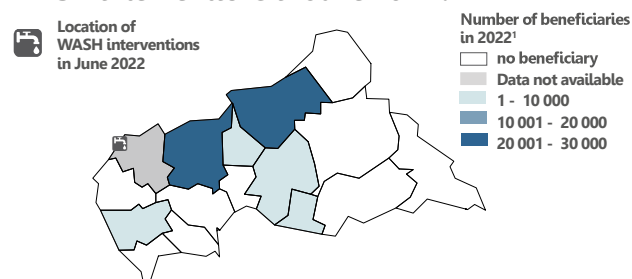
## Beneficiaries in 2022<sup>1</sup>



### NFI distributions in June 2022 :



### WASH interventions in June 2022 :



<sup>1</sup> Assessments and interventions, which were not finished by 30th June 2022, are not included. Those numbers do not include the data of one intervention in WASH, one in NFI, as detailed data are not available on the 08/07/2022. <sup>2</sup> Exploratory missions. <sup>3</sup> Nutrition screenings. <sup>4</sup> Post-distribution monitoring. <sup>5</sup> MSA-R are not triggered following a RRM alert. MSA-R aim at gathering information on areas not recently affected and/or not recently accessed by humanitarian actors. <sup>6</sup> The term 'host community' refers to individuals that have not been displaced as the result of a humanitarian-related event. <sup>7</sup> The term 'returnees' refers to people who have come back to their pre-crisis location following a period of internal displacement. <sup>8</sup> The term 'repatriates' refers to former refugees who have returned from neighbouring countries.

For more information, please contact:  
RRM Coordinator,  
Léo ALVIN : [alvin@unicef.org](mailto:alvin@unicef.org)  
Chief Emergency & Field Operations,  
Olivier CORBET : [ocorbet@unicef.org](mailto:ocorbet@unicef.org)

Produced by:  
**REACH** Informing more effective humanitarian action

