

Hawl Wadaag IDP Settlements Overview

Mogadishu, Banaadir, Somalia
January 2016

Somalia Displacement Crisis



Humanitarian Aid
and Civil Protection

Background and Methodology

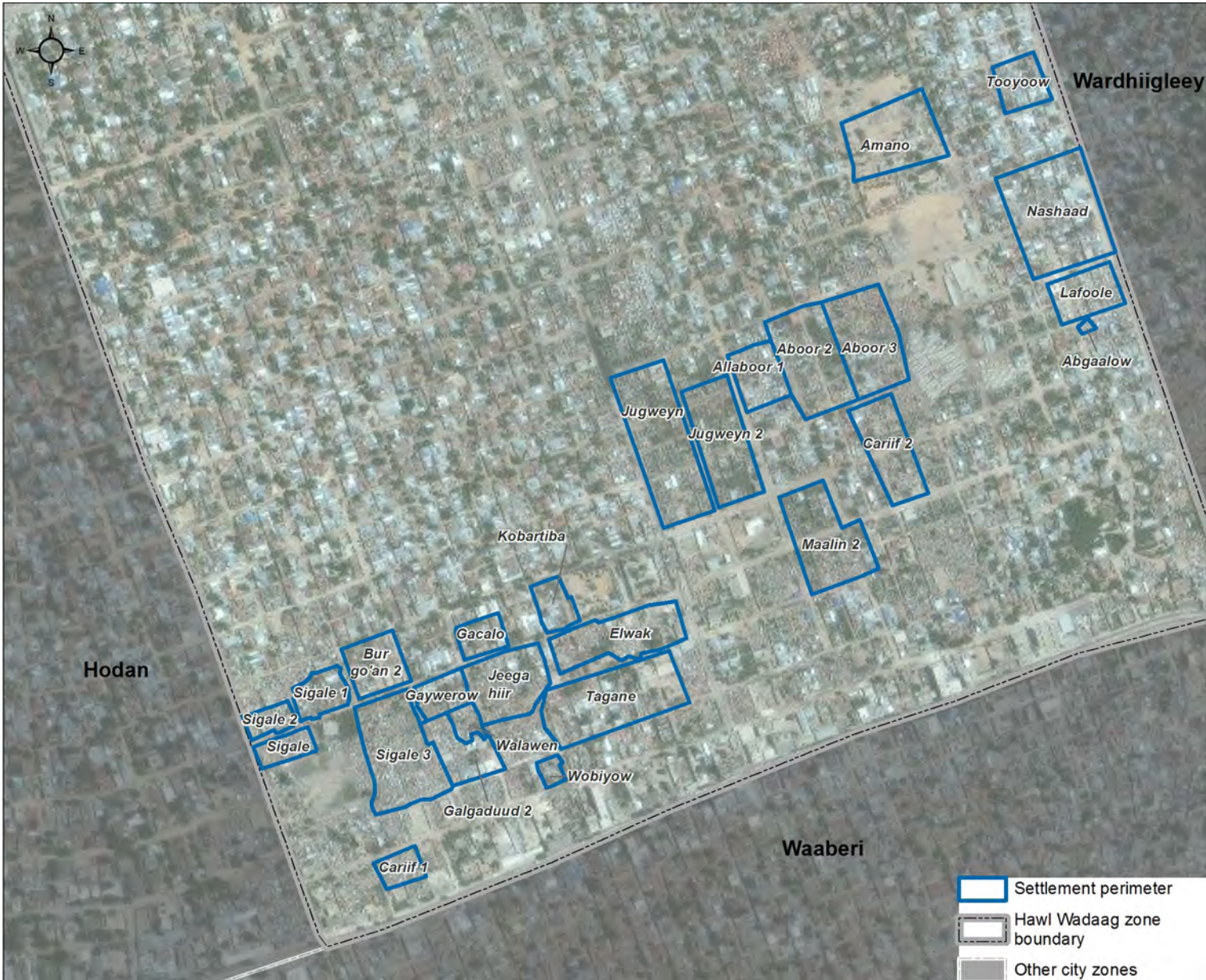
This factsheet presents preliminary findings from an assessment of informal settlements where Internally Displaced Persons (IDPs) reside in Mogadishu. As there are no formal IDP settlements within Somalia, settlements are interspersed with host community members, refugees, economic migrants, etc. This factsheet highlights only the findings from IDP, economic migrant and host community households within the settlements. 27 settlements were assessed between August and December 2015, as part of a joint IDP profiling exercise.

This factsheet presents findings from Hawl Wadaag, one of 16 assessed zones of IDP settlements. Areas were selected based on geographic proximity and relevant umbrella structures. The zonal distributions should in no way be seen as formal designations of administrative boundaries. Information is based on a full household enumeration and 103 facilities mapped. Facility mapping was conducted

by REACH through direct observations, facility management interviews and collection of GPS coordinates. Household data was collected with support from IOM, DRC, NRC, UNHCR, Save the Children, HINNA, Elman, DBG, DMA, BRA, UNICEF, UNOCHA, REACH, SSWC, Mercy Corps, Concern and ORDO.

The information presented in the factsheet was collected on behalf of the humanitarian community in order to better understand the needs, vulnerabilities and intentions of IDPs in these communities. Indicators measured were chosen in coordination with relevant clusters, with targets according to minimum humanitarian standards. This factsheet should be read together with factsheets for the other assessed zones and is accompanied by a profiling report produced by JIPS and the Somalia Protection Cluster.

Settlement perimeters in Hawl Wadaag

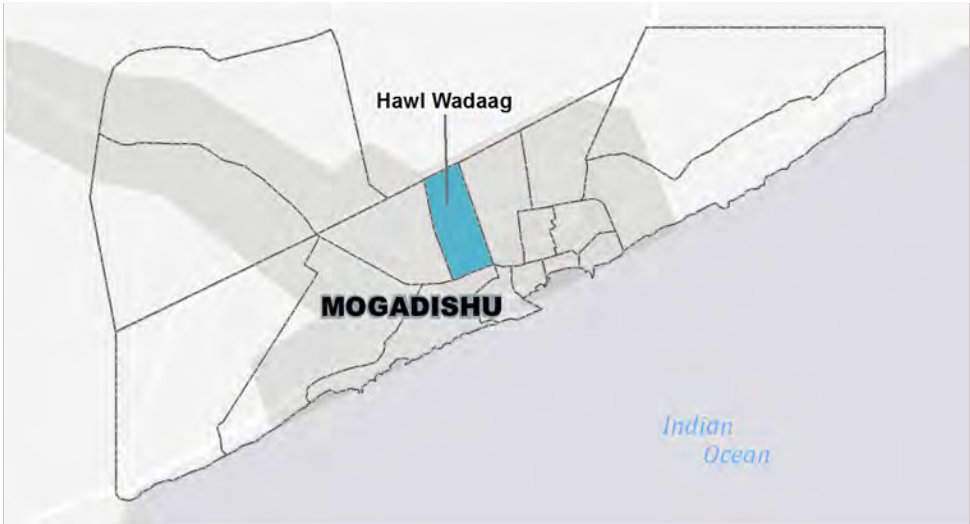


Data, designations and boundaries contained on this map are not warranted to be error-free and do not imply acceptance by the REACH partners, associates, donors or any other stakeholder mentioned on this map.

Overview

Number of settlements	27
Number of households in settlements	1803
Total area of settlements	184020 m²
Population of assessed settlements in zone	
IDP	8768
Economic migrant	528
Host community	728

Location Map



Facilities Overview

Kiosks and markets	Target*	Achieved
% of households within 5km of a kiosk	100%	100% ●
% of households within 5km of a market	100%	100% ●
% of settlements with kiosk and/or market open at night	100%	19% ●
Services		
% of settlements with nutrition services available within the settlement area	100%	0% ●
% of schools meeting minimum teacher to student ratio (1:45)	100%	No school ●
Community and Security		
% of settlements with at least one community centre within the settlement area	100%	0% ●
% settlements with at least one police post within the settlement area	100%	0% ●
Infrastructure		
% of households within 500m of a waterpoint	100%	100% ●
# individuals per latrine	max. 20	122 ●

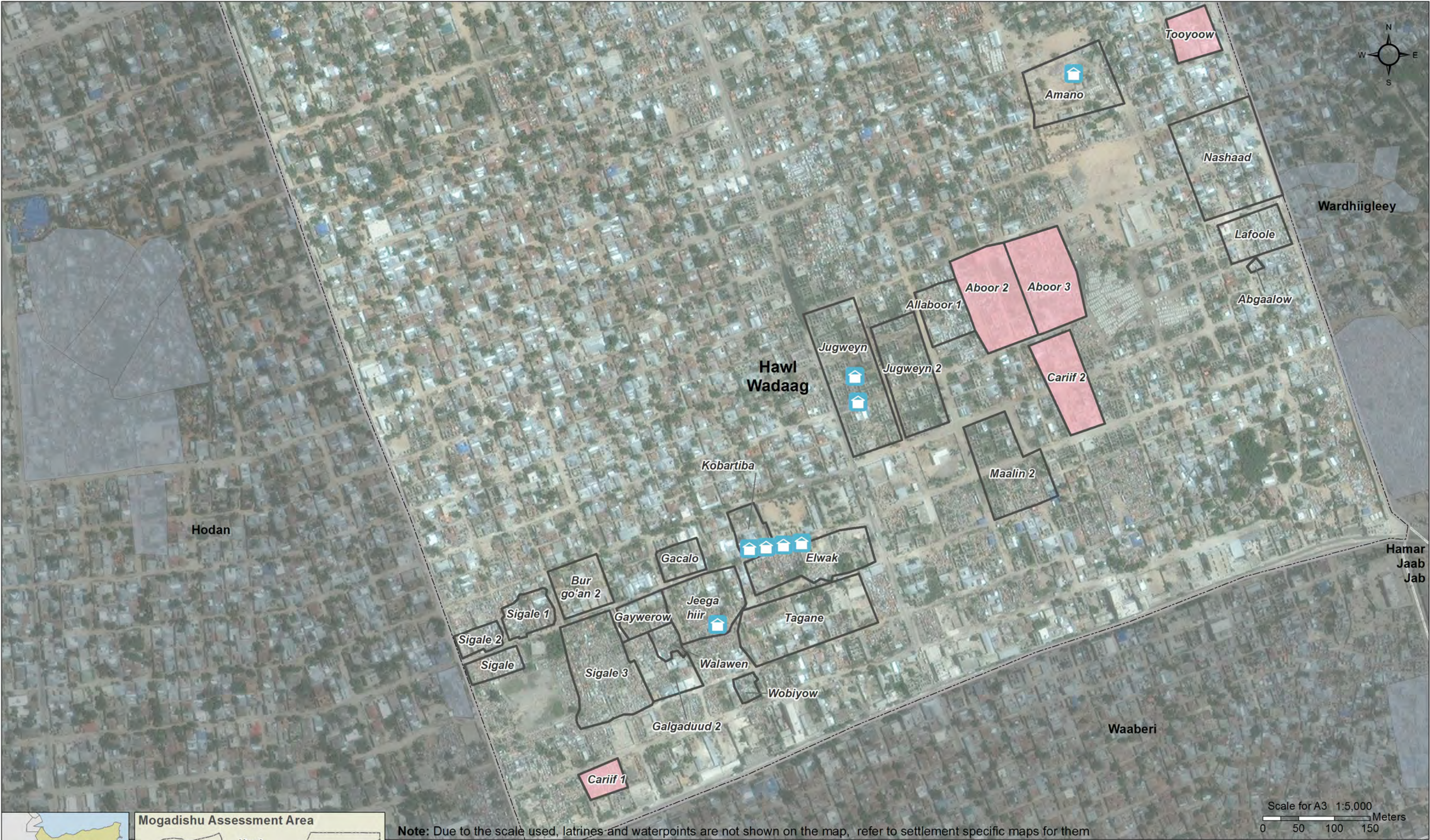
*Targets are based on Sphere and UNHCR minimum standards ● Target reached , ● Target more than 50% reached, ● Target less than 50% or not at all reached, ● Not applicable

SOMALIA - Mogadishu IDP Profile, October 2015

Hawl Wadaag District – Settlements and Facilities



For Humanitarian Purposes Only
Production date: 27 January 2016



Note: Due to the scale used, latrines and waterpoints are not shown on the map, refer to settlement specific maps for them

Facilities
Kiosk (8)

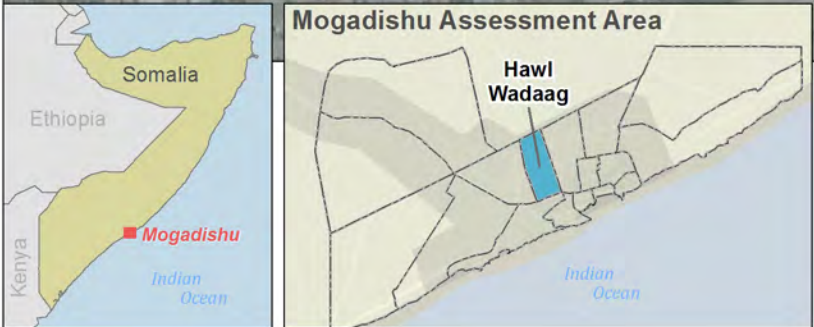
IDP settlements
Settlement perimeter (27)
No facility information (5)
Other IDP settlements outside the district

Mogadishu city zones
Hawl Wadaag zone boundary
Other city zones

Data Sources:
Settlements and assessment data: REACH assessment - October 2015
Administrative units: OCHA COD, 2015
Imagery: ESRI base layers
Coordinate System: GCS WGS 1984
Contact: reach.mapping@impact-initiatives.org
File: REACH_SOM_Map_Mogadishu_IDP_Profile_Hawl Wadaag_facilities_05NOV2015_A3

Contributing partners:
IOM DRC NRC UNHCR Save the Children HINNA Elman DBG DMA BRA UNICEF
UNOCHA REACH SSWC Mercy Corps Concern ORDO

Funded by
Humanitarian Aid and Civil Protection



Note: Data, designations and boundaries contained on this map are not warranted to be error-free and do not imply acceptance by the REACH partners, associates, donors or any other stakeholder mentioned on this map.

REACH
An initiative of
IMPACT Initiatives
ACTED and UNOSAT