



# Wau Snapshot

Wau POC, Western Bahr el Ghazal State, South Sudan

South Sudan Displacement Crisis

December 2015

## Summary

Wau protection of civilians site (PoC) was established in April 2014 following the outbreak of violence. In the month of November no new arrivals were record.

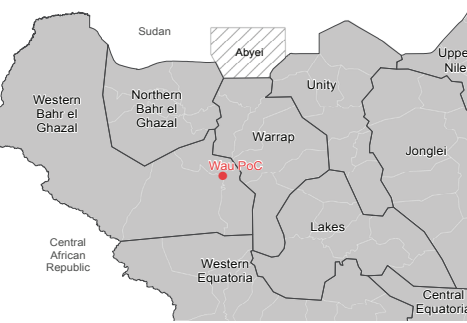
Data was provided by IOM DTM (as of 03/12/2015) and REACH (as of 07/12/2015) and spatial data was provided by REACH (as of 29/07/2015).

## Site Overview

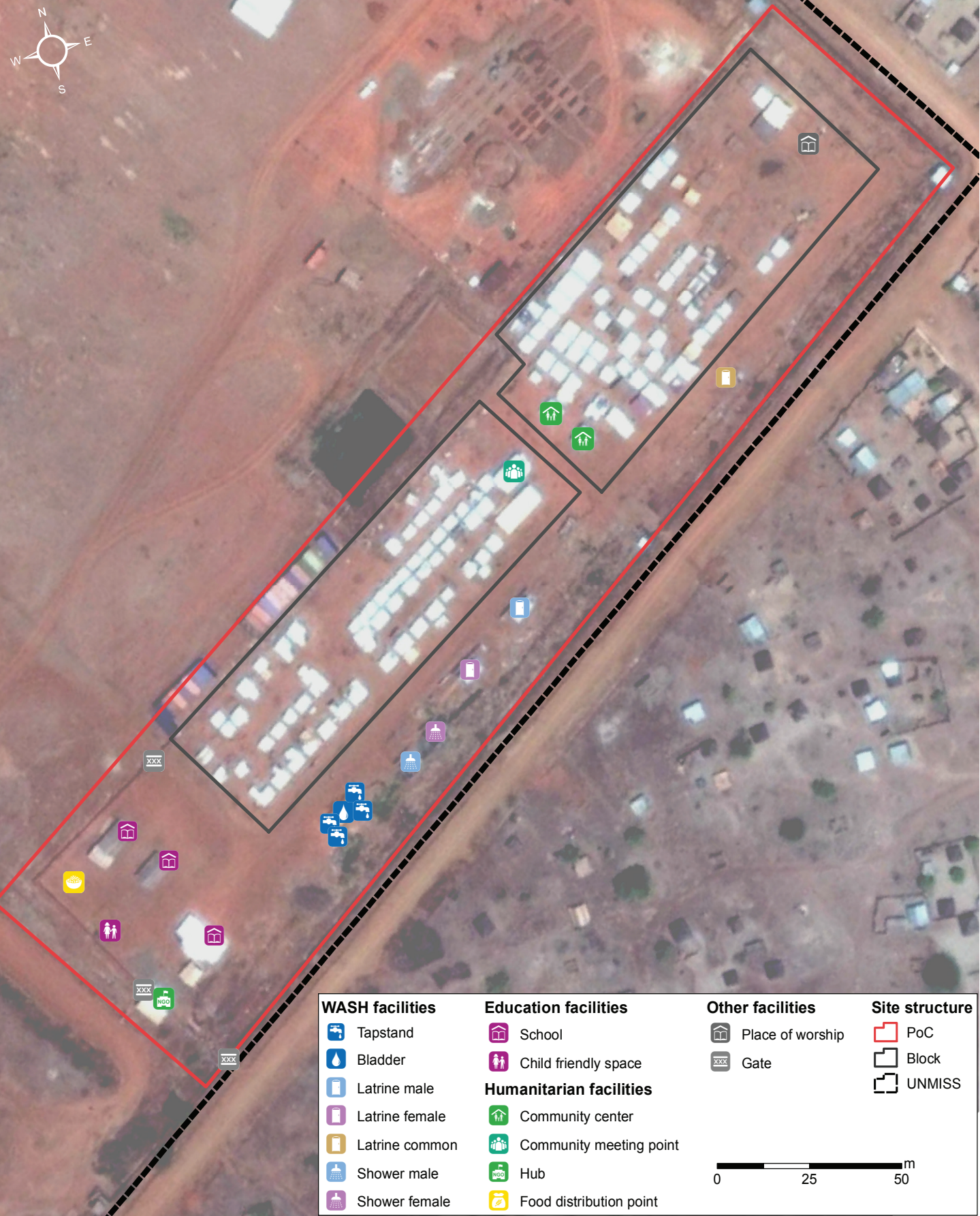
**Site management:** IOM  
**Site population:** 200\*  
**Accommodation:** 125 structures  
**Planned capacity:** 413 structures  
**Site area:** 9,581 m<sup>2</sup>  
**IDP County of origin**  
1<sup>st</sup> largest group Rubkona County  
Other large groups Not specified

\* Population figure by IOM (as of 03 Dec 2015) differs from REACH assessment (276, as of 07 Dec 2015)

## Location Map



## Wau Site Map



## Implementing Agencies

- EDUCATION** Unicef
- FOOD** WFP
- HEALTH** Vacant
- PROTECTION** UNHCR
- SHELTER / NFI** IOM, Unicef, UNHCR
- WASH** Unicef

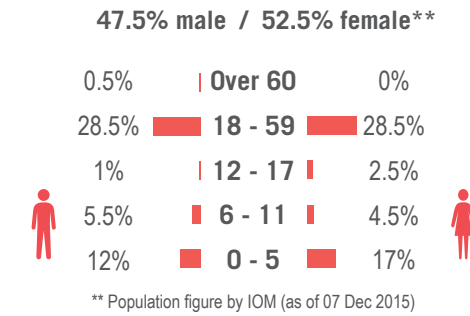
## CCCM Mechanisms

- The following structures are in place:
- ☒ **Site management committee**
  - ☒ **Chiefs' committee**
  - ☒ **Women's committee** (hygiene committee)
  - ☒ **Drainage committee**

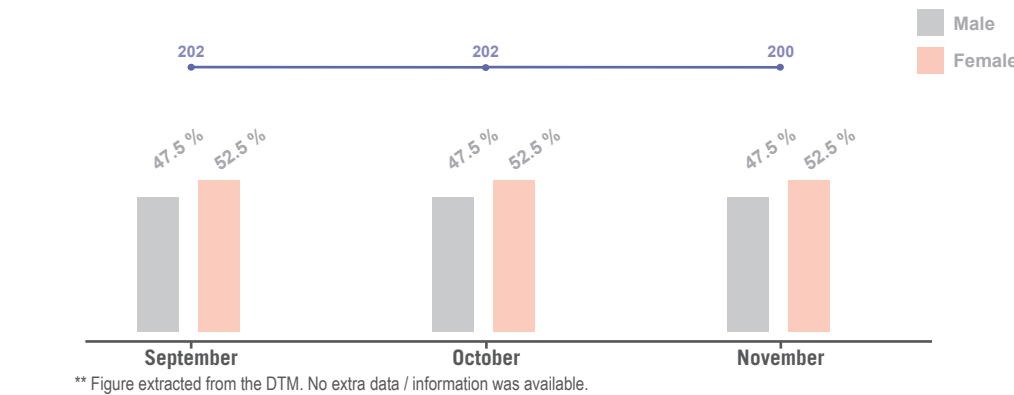
## Reported Priority Needs

- Priority needs were reported and ranked by camp management as:
- 1 Health services** (new agency to take over health activities)
  - 2 Education** (text books for all grades)
  - 3 WASH and NFI**

## Demographics



## Demographic Trends\*\*



## Sectoral Overview

		Target***	Achieved	
Food	Food accessible on-site	Yes	Yes	●
	Markets physically accessible from site	Yes	Yes	●
Health	Health services are available on-site or within walking distance	Yes	Yes	●
CCCM	Average open area per person	min. 30 m <sup>2</sup>	47.9 m <sup>2</sup>	●
	% of families living in rakoobas/tukul	min 75%	Less than 75 %	●
	% of families living in makeshift shelters	0%	0 %	●
	Average number of individuals per tent	max 5	1.6	●
Shelter	Average covered area per person****	min 4.2 m <sup>2</sup>	10.9 m <sup>2</sup>	●
	Liters of water available per person per day	min 15 L	N/A	●
Water Sanitation	# of persons per latrine (m/f)	max 20	N/A	●
	# of persons per shower (m/f)	max 20	N/A	●

\*\*\* Targets are based on minimum standards agreed with the CCCM Cluster ● Target reached, ● Target more than 50% reached, ● Target less than 50% or not at all reached. ● No data

\*\*\*\* Wau PoC shelters averagely measure 17.5 m<sup>2</sup>