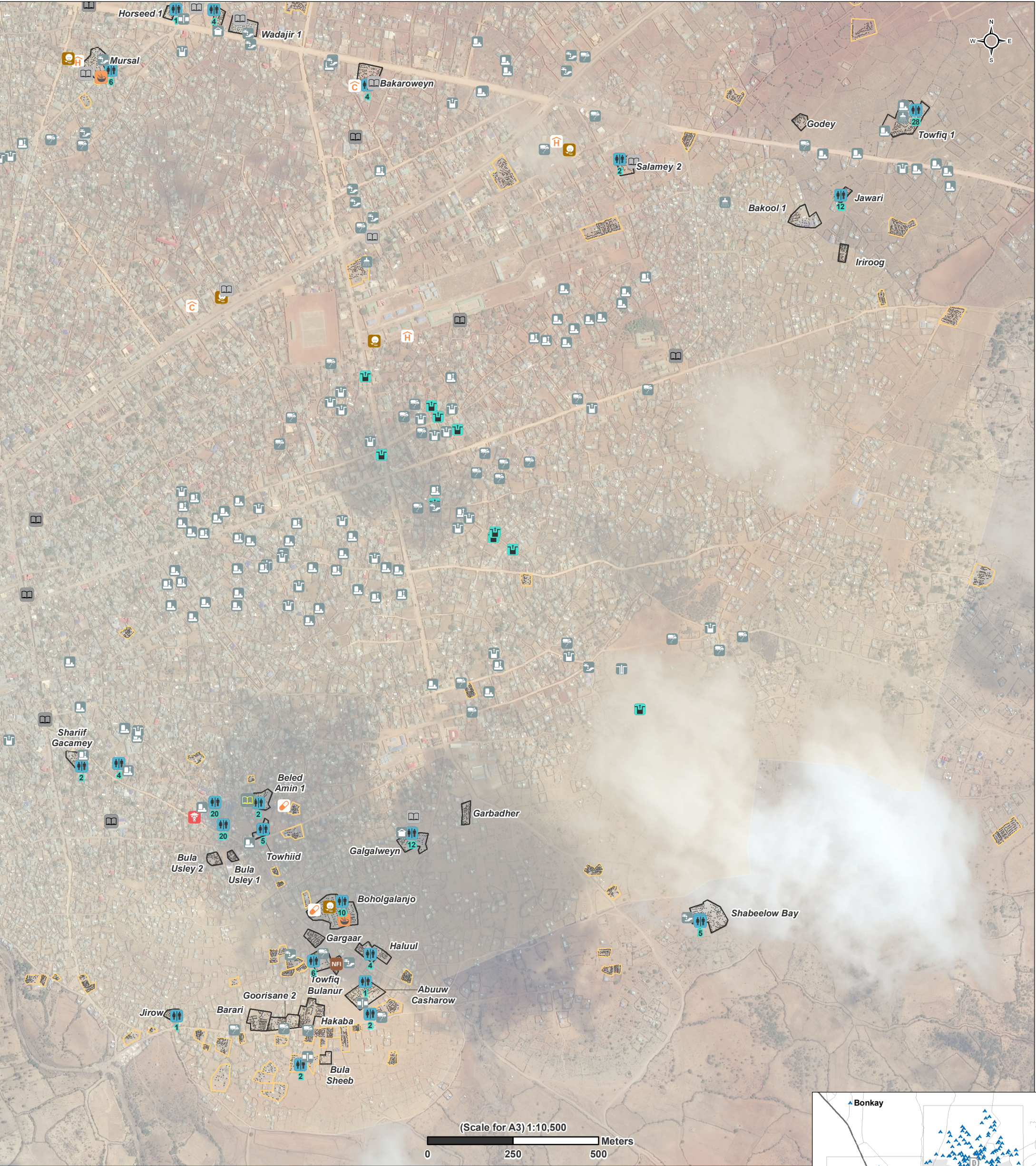


SOMALIA – Baidoa IDP Settlement Profiling

Baidoa B: Settlements and Facilities – April 2017

For Humanitarian Purposes Only
Production date: 20 June 2017





Structures

- Shelters (6,053)
- Latrine blocks (23)
- Qu'ranic school (1)
- Primary school (8)
- Secondary school (8)
- Borehole (1)
- Burkad (3)
- Other piped system (3)
- Protected well with hand pump (23)
- Protected well without hand pump (53)
- Shallow well (10)
- Unprotected well (29)
- Water Tank and tap (16)
- Water kiosk (2)
- Water trucking distribution point (32)
- Nutrition center (5)
- Health centre (3)
- Primary health care unit (2)
- Pharmacy (2)
- Referral health centre (1)
- Food market (2)
- NFI market (1)

Boundaries

- Assessed IDP settlements (29)
- Remotely identified IDP settlement (Not yet field validated) (55)

Funded by



Data sources:
Settlements and Facilities: REACH field team
Imagery and Shelter points: UNOSAT 21APR2017
Administrative boundaries, Roads, Towns: UNDP
Coordinate System: WGS 1984 UTM Zone 38N
Contact: reach.mapping@impact-initiatives.org
File: reach_som_map_baidoa_b_idp_profile_2017_a3

Note: Data, designations and boundaries contained on this map are not warranted to be error-free and do not imply acceptance by the REACH partners, associates, donors mentioned on this map.

