

Reported Top Needs

	Host Communities		Displaced	
	Female	Male	Female	Male
Employment	12%	25%	21%	14%
Drinking Water	16%	14%	8%	22%
Health	11%	22%	11%	0%
Winterisation	12%	0%	17%	3%
Shelter	7%	0%	13%	17%
Solid Waste Mgmt	0%	11%	3%	14%
Waste Water Mgmt	9%	0%	5%	14%
Roads	14%	8%	0%	3%
Electricity	2%	14%	0%	3%
Education	5%	3%	13%	6%

Host

Displaced

Demographic Pressure

Top 3 reasons for moving in
Last 3 years Last 6 months

- Knew friends/family 1 Safety concerns
N/A 2 More employment opportunities
N/A 3 Knew friends/family

100% of hosts reported significant population increase in the last 3 years

93% of displaced reported significant population increase in the last 6 months

Social Stability

Potential sources of tensions related to:
Lack of Social interaction

Lack of conflict mitigation mechanisms

Lack of confidence in institutions

Restrictions on displaced communities

Negative views of international actors

Social fragmentation

Host

Displaced

Reported issues causing community divisions

- Job shortages 1 Job shortages
Overstretched resources 2 N/A
Overstretched education resources 3 N/A

Income & Poverty

Main sources of income

- Informal commerce 1 Food vouchers
Formal commerce 2 Unskilled non-agricultural labour
Savings 3 Humanitarian aid

Most common mode of employment

Irregular/temporary Irregular/temporary

Average monthly HH income

\$631 as reported by respondents \$264

Reported changes in unemployment in last 3 years/6 months

Increased Increased

Most Commonly Reported HH expenditures on basic food staples

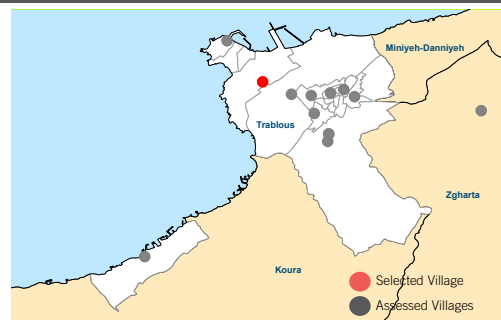
71 - 80% 71 - 80%

Most Commonly Reported HH expenditures on essential non-food items

0 - 10% 0 - 10%

Top coping mechanisms to cover cost of basic needs

- Reduce number of meals 1 Buy cheaper/lower quality food
Reduce meal portion size 2 Reduce number of meals
Credit 3 Credit



Host

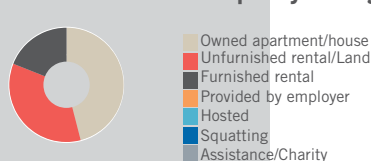
Displaced

Shelter

Main types of accommodation reported



Kind of occupancy arrangement



Average monthly household rent

\$231

\$228

Reported evictions



have heard reports of evictions

Electricity

Average hours of electricity reported per day

11h

11h

Average monthly HH expenditure reported

\$50

\$29

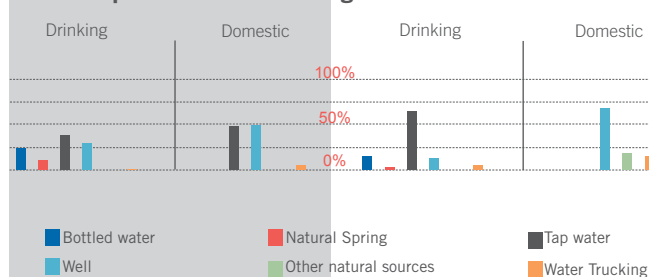
Main source of electricity

Public network

Public network

Water

Top sources for drinking and domestic water



Average monthly expenditure on drinking water per HH

\$23

\$24

Average monthly expenditure on domestic water per HH

\$31

\$25

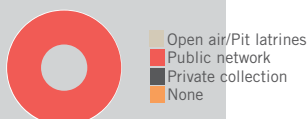


Host

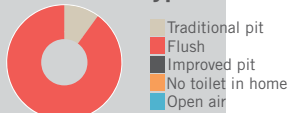
Displaced

Wastewater Management

Main wastewater systems



Types of toilets



Access to showering and washing facilities

97%

of respondents HH have access to showering and washing facilities

94%

Reported flooding or presence of stagnant water within community in the last 12 months

42%

reported flooding in immediate surroundings

27%

Solid Waste Management

Main type of solid waste disposal

Public collection

Public collection

In the last 3 months

Refuse/garbage

65%

of respondents reported noticeable excess refuse/garbage

38%

Presence of pests

68%

of respondents reported noticeable presence of flies, rodents, and insects

39%

Health

Most commonly reported child illnesses

Diarrhea 1 Diarrhea

Chicken pox 2 Acute respiratory diseases

Acute respiratory diseases 3 Scabies

Top 3 challenges in accessing health services

Cost of medicines 1 Cost of medicines

Cost of health services 2 Cost of health services

No affordable transportation 3 Safety or security concerns

Participated in polio campaigns in last 3 months

70%

took their children to be vaccinated in polio campaign

42%

Reasons for not participating in polio campaigns



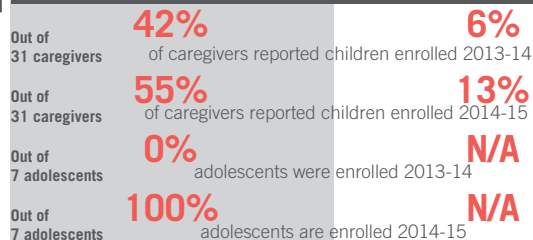
N/A



Host

Displaced

Education



Non-formal education opportunities

96%

reported there are no non-formal education opportunities

100%

Top reported challenges in accessing education

Cost of school fees 1 Cost of school supplies

Cost of school supplies 2 Cost of school fees

No affordable transportation 3 Safety/security concerns during travel

Children and Women

Birth registration

0%

respondents reported cases of unregistered births

3%

Vulnerable population groups living within community

Average reported proportion of
Separated women

25%

0%

10%

Widowed women

3%

N/A

Unaccompanied children minors

0%

12%

Orphans

11%

N/A

Pregnant women

9%

N/A

Girls married before 18

5%

Population groups engaged in income generation

Men (18+) 1 Men (18+)

Women (18+) 2 Women (18+)

Male adolescents (12-17) 3 Male adolescents (12-17)

Reasons why women may not be participating in the labor force

No skills 1 Household and child raising responsibilities

Household and child raising responsibilities 2 Traditional values/customs

Low levels of or no education 3 Safety concerns outside of home

Main activities for out of school boys under 18

Informal employment 1 Informal employment

Begging 2 Household chores/Child care

N/A 3 N/A

Main activities for out of school girls under 18

Household chores/Child care 1 Household chores/Child care

N/A 2 N/A

N/A 3 N/A

Cases of abuses and services

7%

of respondents heard of cases of abuse, exploitation or sexual violence in last 6 months

0%

0%

of respondents know of services available for women and children at risk or survivors of violence, abuse or exploitation

0%