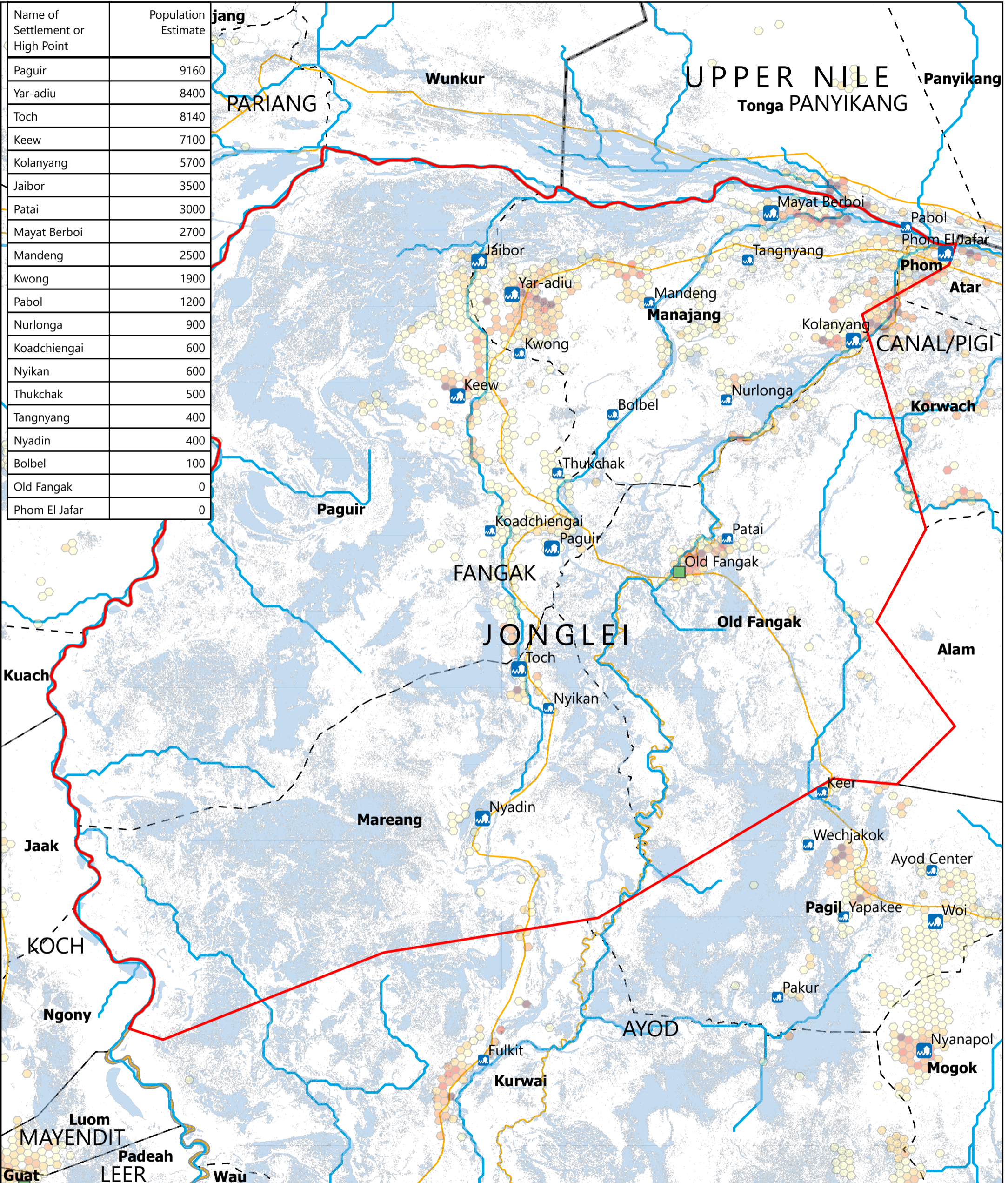


SOUTH SUDAN - Fangak County

Flood overview (September 2025)

For Humanitarian Purposes Only

Production Date: 29 September 2025



Name of Settlement or High Point	Population Estimate
Paguir	9160
Yar-adiu	8400
Toch	8140
Keew	7100
Kolanyang	5700
Jaibor	3500
Patai	3000
Mayat Berboi	2700
Mandeng	2500
Kwong	1900
Pabol	1200
Nurlonga	900
Koadchiengai	600
Nyikan	600
Thukchak	500
Tangnyang	400
Nyadin	400
Bolbel	100
Old Fangak	0
Phom El Jafar	0



Population (Kontur, 2023)

- 1 - 100
- 101 - 250
- 251 - 500
- 501 - 750
- > 750

Legend:

- Flooded settlements
- Flooded Small Towns
- High Ground (OCHA 2024 & UNMISS 2025)
- Roads
- River
- Payam
- Focus County
- County
- State

Scale: 0 5 10 Km

Compass: N, S, E, W

Data sources: Source: REACH, OCHA, UNMISS, IOM_DTM, UNOSAT, FEWSNET
 Coordinate System: Name: GCS WGS 1984
 File: REACH_SSD_Map_Jonglei_Fangak_Flood_29_Sept_2025
 Contact: reach.mapping@impact-initiatives.org

Note: Data, designations and boundaries contained on this map are not warranted to be error-free and do not imply acceptance by REACH partners, associates or donors mentioned on this map.

