

# Research Terms of Reference

UNHCR Refugee Response: inter-agency multi-sector needs assessment (MSNA)

SSD1802

South Sudan

September 2018

Version 1

**REACH** Informing  
more effective  
humanitarian action

## 1. Executive Summary

<b>Country of intervention</b>	South Sudan		
<b>Type of Emergency</b>	<input type="checkbox"/> Natural disaster	<input checked="" type="checkbox"/> Conflict	
<b>Type of Crisis</b>	<input type="checkbox"/> Sudden onset	<input type="checkbox"/> Slow onset	<input checked="" type="checkbox"/> Protracted
<b>Mandating Body/ Agency</b>	United Nations High Commission for Refugees		
<b>Project Code</b>	32DQW		
<b>Overall Research Timeframe</b> (from research design to final outputs / M&E)	September to December 2018		
<b>Research Timeframe</b> Add planned deadlines (for first cycle if more than 1)	1. Start collect data: 29/10/2018	4. Data sent for validation: 30/11/2018	
	2. Data collected: 23/11/2018	5. Outputs sent for validation: 20/12/2018	
	3. Data analysed: 30/11/2018	6. Outputs published: 31/12/2018	
<b>Number of assessments</b>	<input checked="" type="checkbox"/> Single assessment (one cycle)		
	<input type="checkbox"/> Multi assessment (more than one cycle)		
<b>Humanitarian milestones</b> Specify <b>what</b> will the assessment inform and <b>when</b> e.g. The shelter cluster will use this data to draft its Revised Flash Appeal;	<b>Milestone</b>	<b>Deadline</b>	
	<input checked="" type="checkbox"/> Donor plan/strategy	31/12/2018	
	<input type="checkbox"/> Inter-cluster plan/strategy		
	<input type="checkbox"/> Cluster plan/strategy		
	<input checked="" type="checkbox"/> NGO platform plan/strategy	31/12/2018	
	<input type="checkbox"/> Other (Specify):		
<b>Audience Type &amp; Dissemination</b> Specify <b>who</b> will the assessment inform and <b>how</b> you will disseminate to inform the audience	<b>Audience type</b>	<b>Dissemination</b>	
	X Strategic - <b>Who</b> : Refugee Response Partners; <b>How</b> : Public (available on REACH research center and online portal)	X General Product Mailing (e.g. mail to NGO consortium; HCT participants; Donors)	
	X Programmatic - <b>Who</b> : Refugee Response Partners; <b>How</b> : Public (available on REACH research center and online portal)	X Presentation of findings (e.g. at HCT meeting; Cluster meeting)	
	X Operational - <b>Who</b> : Refugee Response Partners; <b>How</b> : Public (available on REACH research center and online portal)	X Website Dissemination (Relief Web & REACH Resource Centre)	
<b>Detailed dissemination plan required</b>	<input type="checkbox"/> Yes	<input checked="" type="checkbox"/> No	
<b>General Objective</b>	To understand living conditions, access to services and top priority needs of refugees living in Maban refugee camps so as to inform actors involved in the UNHCR refugee response.		

<b>Specific Objective(s)</b>	<ol style="list-style-type: none"> <li>1. To understand humanitarian needs of populations in Maban refugee camps in Food Security and Livelihoods, Nutrition, Camp Management, Environment, NFIs &amp; Shelter, WASH and Education sectors.</li> <li>2. To compare humanitarian needs of populations between the four refugee camps in Maban County.</li> <li>3. To create temporally comparisons and trend analysis of the development of the humanitarian needs of populations in Maban refugees camps.</li> </ol>														
<b>Research Questions</b>	<ol style="list-style-type: none"> <li>A. What are the key humanitarian needs of the populations residing in the Maban Camps regarding: Food Security and Livelihoods, Nutrition, Camp Management, Environment, NFIs &amp; Shelter, WASH and Education sectors.</li> <li>B. What are the similarities and differences in term of humanitarian needs between the population of the four refugee camps in Maban County?</li> <li>C. What are the similarities and differences in term of humanitarian needs of the population of the four refugees camps in Maban County compared to data collected in late 2017?</li> </ol>														
<b>Geographic Coverage</b>	<i>Population living in the four refugee camps in Maban County</i>														
<b>Secondary data sources</b>	<ol style="list-style-type: none"> <li>1. UNHCR –General food distribution (GFD) monthly reports, Registration data, Operational updates, population figures,</li> <li>2. Operational updates from other sector leads in the camps,</li> <li>3. REACH – inter-agency MSNA 2017<sup>1</sup>, previous assessments<sup>2</sup></li> </ol>														
<b>Population(s)</b> <i>Select all that apply</i>	<table border="1"> <tr> <td><input type="checkbox"/> IDPs in camp</td><td><input type="checkbox"/> IDPs in informal sites</td></tr> <tr> <td><input type="checkbox"/> IDPs in host communities</td><td><input type="checkbox"/> IDPs [Other, Specify]</td></tr> <tr> <td><input checked="" type="checkbox"/> Refugees in camp</td><td><input type="checkbox"/> Refugees in informal sites</td></tr> <tr> <td><input type="checkbox"/> Refugees in host communities</td><td><input type="checkbox"/> Refugees [Other, Specify]</td></tr> <tr> <td><input type="checkbox"/> Non-displaced (hosting)</td><td><input type="checkbox"/> Non-displaced (not hosting)</td></tr> <tr> <td><input type="checkbox"/> Returnees</td><td><input type="checkbox"/> [Other, Specify]</td></tr> </table>	<input type="checkbox"/> IDPs in camp	<input type="checkbox"/> IDPs in informal sites	<input type="checkbox"/> IDPs in host communities	<input type="checkbox"/> IDPs [Other, Specify]	<input checked="" type="checkbox"/> Refugees in camp	<input type="checkbox"/> Refugees in informal sites	<input type="checkbox"/> Refugees in host communities	<input type="checkbox"/> Refugees [Other, Specify]	<input type="checkbox"/> Non-displaced (hosting)	<input type="checkbox"/> Non-displaced (not hosting)	<input type="checkbox"/> Returnees	<input type="checkbox"/> [Other, Specify]		
<input type="checkbox"/> IDPs in camp	<input type="checkbox"/> IDPs in informal sites														
<input type="checkbox"/> IDPs in host communities	<input type="checkbox"/> IDPs [Other, Specify]														
<input checked="" type="checkbox"/> Refugees in camp	<input type="checkbox"/> Refugees in informal sites														
<input type="checkbox"/> Refugees in host communities	<input type="checkbox"/> Refugees [Other, Specify]														
<input type="checkbox"/> Non-displaced (hosting)	<input type="checkbox"/> Non-displaced (not hosting)														
<input type="checkbox"/> Returnees	<input type="checkbox"/> [Other, Specify]														
<b>Stratification</b> <i>Select type(s) and enter number of strata</i>	<table border="1"> <tr> <td><input checked="" type="checkbox"/> Geographical: by Refugee camp Population size per strata is known? <input checked="" type="checkbox"/> Yes <input type="checkbox"/> No</td><td><input type="checkbox"/> Group #: _ _ _ Population size per strata is known? <input type="checkbox"/> Yes <input type="checkbox"/> No</td><td><input type="checkbox"/> [Other Specify] #: _ _ Population size per strata is known? <input type="checkbox"/> Yes <input type="checkbox"/> No</td></tr> </table>	<input checked="" type="checkbox"/> Geographical: by Refugee camp Population size per strata is known? <input checked="" type="checkbox"/> Yes <input type="checkbox"/> No	<input type="checkbox"/> Group #: _ _ _ Population size per strata is known? <input type="checkbox"/> Yes <input type="checkbox"/> No	<input type="checkbox"/> [Other Specify] #: _ _ Population size per strata is known? <input type="checkbox"/> Yes <input type="checkbox"/> No											
<input checked="" type="checkbox"/> Geographical: by Refugee camp Population size per strata is known? <input checked="" type="checkbox"/> Yes <input type="checkbox"/> No	<input type="checkbox"/> Group #: _ _ _ Population size per strata is known? <input type="checkbox"/> Yes <input type="checkbox"/> No	<input type="checkbox"/> [Other Specify] #: _ _ Population size per strata is known? <input type="checkbox"/> Yes <input type="checkbox"/> No													
<b>Data collection tool(s)</b>	<table border="1"> <tr> <td><input checked="" type="checkbox"/> Structured (Quantitative)</td><td><input checked="" type="checkbox"/> Semi-structured (Qualitative)</td></tr> </table>	<input checked="" type="checkbox"/> Structured (Quantitative)	<input checked="" type="checkbox"/> Semi-structured (Qualitative)												
<input checked="" type="checkbox"/> Structured (Quantitative)	<input checked="" type="checkbox"/> Semi-structured (Qualitative)														
	<table border="1"> <tr> <th>Sampling method</th><th>Data collection method</th></tr> <tr> <td><b>Structured data collection tool # 1</b> <i>Select sampling and data collection method and specify target # interviews</i></td><td>X Household interview (Target #): 1,450</td></tr> <tr> <td>X Probability / Simple random</td><td></td></tr> <tr> <td><b>Semi-structured data collection tool (s) # 1</b> <i>Select sampling and data collection method and specify target # interviews</i></td><td>X Focus group discussion (Target #): 12</td></tr> <tr> <td>X Purposive</td><td></td></tr> <tr> <td><b>Semi-structured data collection tool (s) # 2</b></td><td>X Key informant interview (Target #): 10</td></tr> <tr> <td>X Purposive</td><td></td></tr> </table>	Sampling method	Data collection method	<b>Structured data collection tool # 1</b> <i>Select sampling and data collection method and specify target # interviews</i>	X Household interview (Target #): 1,450	X Probability / Simple random		<b>Semi-structured data collection tool (s) # 1</b> <i>Select sampling and data collection method and specify target # interviews</i>	X Focus group discussion (Target #): 12	X Purposive		<b>Semi-structured data collection tool (s) # 2</b>	X Key informant interview (Target #): 10	X Purposive	
Sampling method	Data collection method														
<b>Structured data collection tool # 1</b> <i>Select sampling and data collection method and specify target # interviews</i>	X Household interview (Target #): 1,450														
X Probability / Simple random															
<b>Semi-structured data collection tool (s) # 1</b> <i>Select sampling and data collection method and specify target # interviews</i>	X Focus group discussion (Target #): 12														
X Purposive															
<b>Semi-structured data collection tool (s) # 2</b>	X Key informant interview (Target #): 10														
X Purposive															

<sup>1</sup> Inter-agency Multi-Sector Needs Assessment (MSNA) Doro, Yusif Batil, Kaya and Gendrassa refugee camps, Maban County, South Sudan, REACH, January 2018.

<sup>2</sup> Conflicts and Tensions between communities in Gendrassa, Maban County, South Sudan, REACH, January 2017 and Tensions and peace drivers between refugees and host communities in Kaya Camp, Maban County, South Sudan, REACH, September 2017.

Select sampling and data collection method and specify target # interviews ***If more than 2 structured tools please duplicate this row and complete for each tool.		
<b>Target level of precision if probability sampling</b>	95 % level of confidence	5 +/- % margin of error
<b>Data management platform(s)</b>	X IMPACT	X UNHCR
	<input type="checkbox"/> [Other, Specify]	
<b>Expected output type(s)</b>	<input type="checkbox"/> Situation overview #: __	X Report #: 1
	X Presentation (Preliminary findings) #: 1	X Presentation (Final) #: 1
	<input type="checkbox"/> [Other, Specify] #: __	
<b>Access</b>	X Public (available on REACH resource center and other humanitarian platforms)	
	<input type="checkbox"/> Restricted (bilateral dissemination only upon agreed dissemination list, no publication on REACH or other platforms)	
<b>Visibility</b> Specify which logos should be on outputs	REACH, UNHCR	

## 2. Rationale

### 2.1. Rationale

Violence between the Sudan Armed Forces (SAF) and Sudan People's Liberation Movement-North (SPLM-N) in Sudan's Kordofan State and Blue Nile State began in 2011, resulting in large scale displacement. To date, over 200,000 refugees have crossed the border into South Sudan.<sup>3</sup> A number of humanitarian agencies have been operational in the camps under the coordination of the United Nations High Commissioner for Refugees (UNHCR).

During 2016, 2017 and 2018, REACH in Maban has supported different activities and initiatives aimed to improve coordinated assessments in the refugee camps and the host communities. Through continued consultation with UNHCR, development actors, and wider humanitarian response coordination elements, REACH has concluded that the following elements will be also required to fill key information gaps in the response and entrench best practices amongst humanitarian partners:

- Continued methodological, analytical and information management (IM) support
- Continued mapping and regular needs assessments within the Maban Camps
- Continued capacity building for partners involved in the refugee response

Following on from these discussions, it was agreed with UNHCR that REACH will continue the support provided in 2017, including the primary data collection and reporting on the humanitarian situation in the refugee camps in Maban County.

In light of the 23 July attacks and subsequent suspension of all services except essential activities such as water provision and general food distribution (GFD) in Maban, a needs assessment is required to help humanitarian actors understand which needs are most pressing in the refugee camps. This information will enable refugee response partners to decide which services to prioritise in the coming months as programmes potentially restart. Furthermore, data collected this year will be compared to the findings of the inter-agency MSNA conducted at the end of 2017 by REACH and UNHCR teams in Maban. The similarity of tools and methodologies between the two assessments will allow comparisons across time and

<sup>3</sup> OCHA, 25 Sep 2018

trend analysis helping actors involved in the humanitarian response to better understand the evolution of needs and gaps still affecting the humanitarian condition of beneficiaries within the camps in Maban.

### 3. Methodology

#### 3.1 Methodology overview

- To meet research objectives, a mixed methods approach will be used comprising of a household survey, FGDs and KI interviews. The household survey aims to provide quantitative and comparable data between camps and over time, while the FGDs and KIIs will be used to follow up from the household survey and to contextualize and explain the quantitative findings
- In order to ensure compatibility between 2017 and 2018 MSNA, the same survey tool of last year will be used. However, before the start of data collection, REACH will share it with UNHCR and key refugee response to confirm the pertinence of main information gaps and indicators needed to understand multi-sector needs in the camps. A quantitative questionnaire will be deployed using smartphones and the Open Data Kit (ODK) survey programme.
- To contextualize and explain the quantitative data, focus group discussions (FGDs) will be conducted in the refugee camps as well as key informant interviews (KII) with NGO staff. Finally, direct observation from trained enumerators will be incorporated to identify the type of shelter and water containers in the camps.

#### 2.2. Population of interest

- The assessment will focus on the population of the four refugee camps in Maban County: Doro, Gendrassa, Yusif Batil and Kaya. The population size and sampling will be based on UNHCR population figures from 31 July 2018 and accessible online<sup>4</sup>.

#### 2.3. Secondary data review

- UNHCR – GFD monthly reports, Registration data, Operational updates, population figures.
- Operational updates from other sector leads in the camps.
- REACH – Previous assessments like the 2017 inter-agency MSNA<sup>5</sup> and conflict assessments<sup>6</sup>.

#### 2.4. Sampling

##### Quantitative survey

Data sources:

- UNHCR population figures<sup>7</sup> to identify the total population per camp and determine the sample sizes accordingly. Last updated as of 31 July 2018 (see Table 1).
- UNOSAT shelter count to identify, in the absence of official data, an approximate size of the population (shelter density) by zone. This layer is update as of:
  - Doro camp: 11 November 2017;
  - Yusif Batil: 31 October 2017;
  - Gendrassa: 31 October 2017;
  - Kaya: 24 March 2017.

The UNOSAT shelter count layer is not the most update and maybe is not completely reflective of the situation in the camps as of today but should be precise enough for this exercise. In fact, the distribution of the population of the four refugee camps

<sup>4</sup> UNHCR, Refugee Statistics, 31 July 2018.

<sup>5</sup> Inter-agency Multi-Sector Needs Assessment (MSNA) Doro, Yusif Batil, Kaya and Gendrassa refugee camps, Maban County, South Sudan, REACH, January 2018.

<sup>6</sup> Conflicts and Tensions between communities in Gendrassa, Maban County, South Sudan, REACH, January 2017 and Tensions and peace drivers between refugees and host communities in Kaya Camp, Maban County, South Sudan, REACH, September 2017.

<sup>7</sup> UNHCR, Refugee Statistics, 31 July 2018.

didn't change drastically since the last analysis date: inter-communal fights took place in May 2017 in Maban resulting in a major relocation of the population between the four refugee camps but no major displacements have been recorded since. The only UNOSAT layer previous to May 2017 is for Kaya camp (24 March 2017) and this could endanger the sampling strategy for this camp. However, the site planning and population distribution in Kaya is, still now, much more "organized" than the other three camps allowing us to easily adapt the sampling strategy for this camp (see Map 1).

Based on the UNHCR population data, the sample size per camp was determined as outlined in the table below. The sample size will produce results generalization to the population in each camp to a 95% level of confidence and 5% margin of error. The sample size also includes a 10% buffer to account for potential non-response rate.

Table 1 Sample size calculation

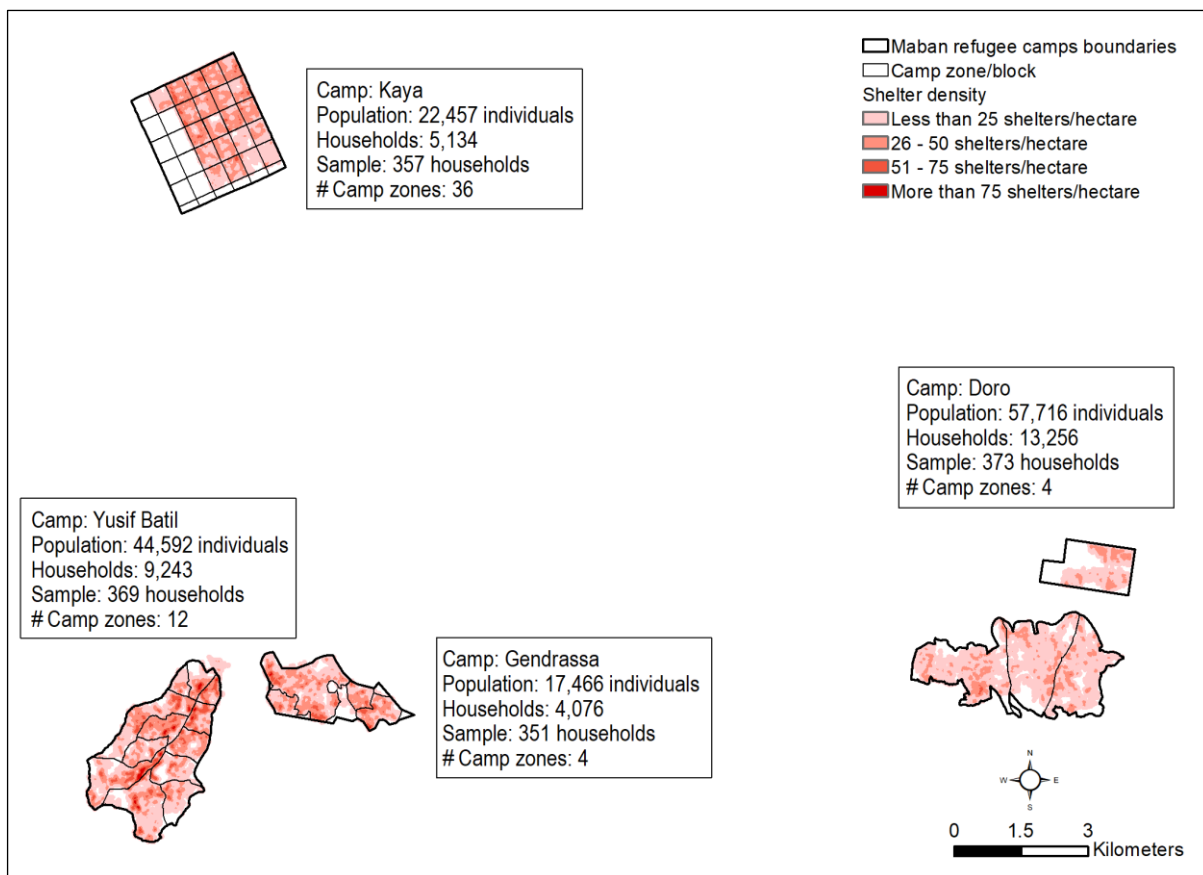
Camp name	Population size <sup>8</sup> (households)	Sample size <sup>9</sup> (households)	Sample size targeted <sup>10</sup>
Doro	13,256	373	403
Kaya	5,134	357	387
Yusif Batil	9,243	369	399
Gendrassa	4,076	351	381

<sup>8</sup> UNHCR, Refugee Statistics, 31 July 2018.

<sup>9</sup> Data will be representative with a margin of error 5% and 95% confidence level for the population in each of the four camps.

<sup>10</sup> The sample size target corresponds to the sample target + 30 surveys: this to ensure to collect enough data considering potential surveys deletions could happen during the data.

Map 1 Maban refugee camps - Statistics



For example, for the sample strategy in Doro camp<sup>11</sup>, the following two steps are planned:

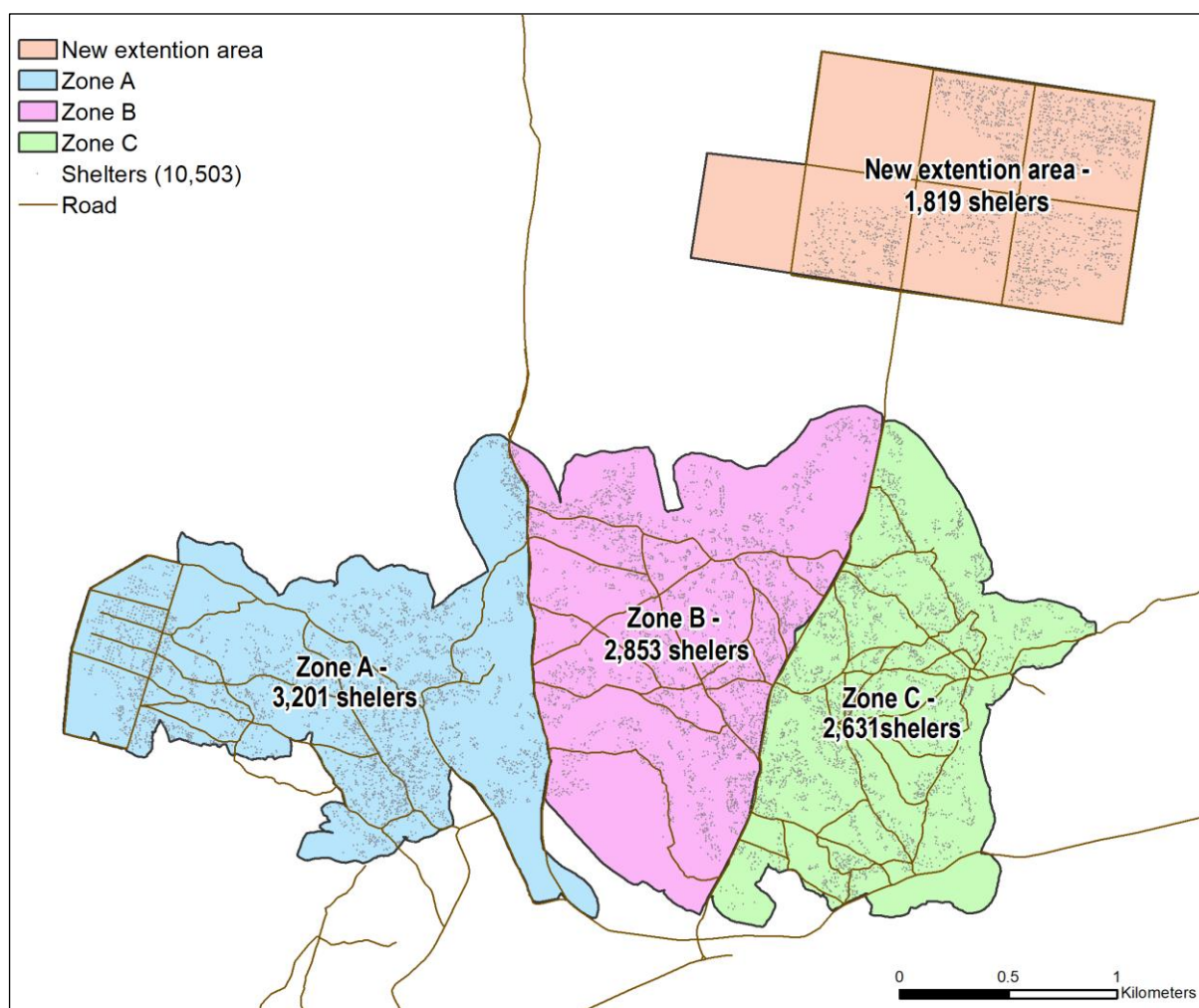
1. Proportionally distribute the sample across camp zones, based on the population density of each zone.
2. Identify a systematic approach to randomly select the households to be surveyed in each zone.

*1<sup>st</sup> step: Proportionally distribute the sample across camp zones*

Using the GIS software ArcMap, the number of shelters will be calculated (using the UNOSAT shelter layers) in each zone of the camp. To do that a spatial join between the “camp zones” and the “shelters” layer will be conducted to identify the number of shelters per each zone (see Map 3). The assumption behind this is that one shelter corresponds to one household and while, this might not always be true (i.e. one shelter sometimes has more than one household), the number of shelters can still be considered a proxy for the population density and thus for the relative distribution of households across the different zones.

<sup>11</sup> The same approach will also be applied to the three other camps, based on this Doro example.



**Map 2 Doro refugee camp - Camp zone**

The sample will then be distributed across the zones, weighted by the population density of each zone. This is to ensure that number of surveys conducted in each zone within the camp is proportional to the population density of that zone. The formula used in Excel to identify this is the following: (Number of shelters per zone / total number of shelters in the camp) \* sample size targeted. The result is shown in the table below.

**Table 2 Sample proportionally distributed across camp zones**

Camp zone	Number of shelters per zone	Targeted households (HHs) <sup>12</sup>
Zone A	3,201	123
Zone B	2,853	109
Zone C	2,631	101
Ney extension area	1,819	70

*2<sup>nd</sup> step: Identify a systematic approach to randomly select the households*

<sup>12</sup> Calculation: total number of shelters per zone / total number of shelters in the camp \* sample size targeted (400)

In the context of the refugee camps in Maban, it is not possible to randomly generate and assess points in line with the targeted sample size for each zone. Logistic concerns as well as technical capacity of enumerators to use GIS software (like *maps.me*) to identify the precise GPS position of previously generated points in the map doesn't allow this exercise. Moreover, and based on a previous attempt, because of weather and insufficient GPS coverage in the Maban area, it will be technically challenging to use GIS software like *maps.me* on a daily basis and in an accurate way in the camps.

An alternative approach to randomize household selection on site was thus decided upon, composed of four major steps:

1. Enumerators meet at the centre of the camp zone, spin a pen and each enumerator starts walking in a direction towards the edge of the camp as indicated by the pen;
2. On his/her way to the edge, he/she counts either the number of households passed to reach the edge;
3. Once he/she reached the edge he then determine the threshold for which household to interview on the route based on: # of HHs in the route to reach the edge / target of HHs to be interviewed per enumerators;
4. The enumerator starts then walking back towards the centre and assess every xth household (with xth as determined by the formula in point #3).

### Qualitative survey

To contextualize and explain the quantitative data, a minimum of twelve FGDs (three in each camp) will be piloted and eventually increased until reaching data saturation. Male adults, women and sheikhs<sup>13</sup> will be selected using existing Camp management structures in each camp to participate in the FGD. Key informant interviews (KII) will be also conducted with humanitarian actors operating in the four refugee camps.

## 2.5. Primary Data Collection

- In order to ensure compatibility between 2017 and 2018 MSNA, the same quantitative tool as last year will be used – eventually adjusted to incorporate UNHCR and key refugee response organisations' comments. A focus group discussion (FGD) questioning route will be developed as well to capture and better explain preliminary results from the household survey. Partners on the ground will provide logistical support during the quantitative data collection, as well as translation and facilitation support during FGDs.
- A structured questionnaire will be deployed using smartphones and the Open Data Kit (ODK) application. Enumerator teams will conduct the household surveys in each camp, after a training and a pilot survey.
- In order to better explain and contextualise findings from the household survey, a qualitative data collection will be conducted in the four camps in the form of focus group discussion (FGD). A minimum of twelve FGDs (three in each camp) will be piloted and eventually increased until reaching data saturation. Men, women and sheikhs<sup>14</sup> will be selected via Camp management team in each camp to participate in the FGD to contextualize and explain the quantitative data. The information collected from FGDs will be recorded by a translator with the guidance of both the community and FGD facilitator. Key informant interviews (KII) will be conducted if needed with humanitarian staff operating in the four refugee camps to better understand and explain specific dynamics found in the quantitative data.

## 2.5. Data Processing & Analysis

- Data entry and cleaning process will be accomplished by the Senior Field coordinator on a daily basis and regularly checked by the GIS/Assessment Officer. The cleaning process will be conducted in excel in order to enable sharing and long-term access to data.
- A pilot will be conducted prior to actual data collection in one selected refugee camp. The results from the pilot will be reviewed and a second round of tool revision will be conducted as needed. Furthermore, teams will be

---

<sup>13</sup> Community leader amongst the ethnic groups from Sudan.

<sup>14</sup> FGDs with sheikhs are required because they are the community representatives and so do often have a useful overview of the living conditions in the camps.



re-trained on the tool and debriefed on a daily basis by the Senior Field coordinator if needed during the data collection period.

- Data analysis plan is available at Section 4 of this ToRs.

### 3. Roles and responsibilities

Table 2: Description of roles and responsibilities

Task Description	Responsible	Accountable	Consulted	Informed
Research design	Assessment/ GIS Officer	REACH Country Coordinator	UNHCR, Impact Global Team	Humanitarian Partners
Supervising data collection	Senior Field coordinator	REACH Country Coordinator	UNHCR, Impact Global Team	Humanitarian Partners
Data processing (checking, cleaning)	Senior Field coordinator	REACH Country Coordinator	UNHCR, Impact Global Team	Humanitarian Partners
Data analysis	Assessment/ GIS Officer	REACH Country Coordinator	UNHCR, Impact Global Team	Humanitarian Partners
Output production	Assessment/ GIS Officer	REACH Country Coordinator	UNHCR, Impact Global Team	Humanitarian Partners
Dissemination	Assessment/ GIS Officer	REACH Country Coordinator	UNHCR, Impact Global Team	Humanitarian Partners
Monitoring & Evaluation	Assessment/ GIS Officer	REACH Country Coordinator	UNHCR, Impact Global Team	Humanitarian Partners
Lessons learned	Assessment/ GIS Officer	REACH Country Coordinator		

**Responsible:** the person(s) who executes the task

**Accountable:** the person who validates the completion of the task and is accountable of the final output or milestone

**Consulted:** the person(s) who must be consulted when the task is implemented

**Informed:** the person(s) who need to be informed when the task is completed

### 4. Data Analysis Plan

#### RESEARCH QUESTIONS ADDRESSED WITH SEMI-STRUCTURED TOOL(S)

The focus groups discussions (FGD) questions will be adapted based on the survey findings.

Research Questions	SUBQ #	Data collection method	Sub-research question group	Sub-research Question	Questionnaire QUESTION	Probes	Key disaggregations
	P1	FGD	Preliminary questions	Moderator name	What is the name of the moderator?	N/A	
	P2	FGD	Preliminary questions	Assistant Moderator Name	What is the name of the assistant moderator ?	N/A	

	<b>P3</b>	FGD	Preliminary questions	Focus Group Name	With which group are you conducting the FGD?	N/A	Sheiks, Women, adult Male
	<b>P4</b>	FGD	Preliminary questions	Number of Participants	How many people are participating to the FGD?	N/A	
	<b>P5</b>	FGD	Preliminary questions	Date	What is the date of the current FGD?	N/A	
	<b>P6</b>	FGD	Preliminary questions	Gender	What's the gender of the participants?	N/A	
	<b>I1</b>	FGD	Introduction	Participants presentation	Can everyone introduce themselves, telling me their names, ages and occupations (main source of livelihoods)? Please also tell us which village you come from within the camp. (Moderator to have map of camp with him/her) – we may skip the village question as we normally will know which villages the participants will come from	N/A	
	<b>W1</b>	FGD	WASH	Defecation	Are people defecating in the open? If so, why?	Is open air defecation due to lack of latrines/latrines being full or because people simply do not want to use latrines/lack of hygiene awareness?	
	<b>W2</b>	FGD	WASH	Hand washing	Please describe how you and your community normally wash your hands?	N/A	
	<b>W3</b>	FGD	WASH	Hand washing	Do you know why it is important to wash your hands?	N/A	
	<b>P1</b>	FGD	Protection	Safety and property	When there is a problem in your community, how do you report to? What do you do?	N/A	
	<b>P2</b>	FGD	Protection	Safety and property	Which crimes/problems in the community do you feel comfortable reporting? Which	N/A	

					ones you don't feel comfortable?		
<b>P3</b>	FGD	Protection	Safety and property		Can you identify places in the community where these protection issues (identified in the quantitative section) are most prevalent?	N/A	
<b>P4</b>	FGD	Protection	Safety and property		Are you satisfied with the way problems are resolved?	N/A	
<b>P5</b>	FGD	Protection	Safety and property		How do you/your community protect yourselves + your property?	N/A	
<b>P6</b>	FGD	Protection	Safety and property		How strong is the rule of law+ access to justice in your community? Why do you think so?	N/A	
<b>P7</b>	FGD	Protection	Vulnerable population		What is your assessment of the position of women + girls in this community?	N/A	
<b>P8</b>	FGD	Protection	Vulnerable population		Are the traditional/cultural practices that you believe endanger the safety of women/children?	N/A	
<b>P9</b>	FGD	Protection	Vulnerable population		What are the major challenges faced by elderly in this community? How are elderly perceived? How are they supported?	N/A	
<b>P10</b>	FGD	Protection	Vulnerable population		What are the major challenges faced by people with disabilities? How are they perceived? How are they supported?	N/A	
<b>P11</b>	FGD	Protection	Vulnerable population		Can you identify exceptionally marginalized or excluded groups of people in this community? Why do you think they are marginalized/excluded?	N/A	

	<b>F1</b>	FGD	Food Security	Food Availability	Do you find in the market all the food items you need? If not, what are those products that you want and are not currently available in the market?	N/A	
	<b>F2</b>	FGD	Food Security	Food Availability	What specific food items have increased significantly in pricing?	N/A	
	<b>L1</b>	FGD	Livelihoods	Livelihood strategies	Prior to displacement, what livelihood activities were women and men engaged in? Are they still engaged (now) in these activities? If not, what are they currently engaged in? (if any)	N/A	
	<b>L2</b>	FGD	Livelihoods	Vulnerability context	What are some of the shocks and hazards that have negatively impacted your livelihood security in the last months?	Inflation, Flooding, Drought, Conflict, Political insecurity, pests/disease	
	<b>L3</b>	FGD	Livelihoods	Vulnerability context	How are you addressing and mitigating these issues?	N/A	
	<b>L4</b>	FGD	Livelihoods	Social capital	What social support networks do community members rely on at the time?	N/A	
	<b>L5</b>	FGD	Livelihoods	Social capital	What type of support do community members get from these networks?	N/A	
	<b>En1</b>	FGD	Environment	Fuel Sources and Consumption	Where do you collect the fuel (show it in the map)	N/A	
	<b>En2</b>	FGD	Environment	Fuel Sources and Consumption	What are the concerns or problems with your fuel supply at present?	N/A	
	<b>E1</b>	FGD	Education	Barriers to Education	In your opinion, why do you think children should go to school?	N/A	

	<b>E2</b>	FGD	Education	Barriers to Education	In your opinion, are a majority of children enrolled in and regularly attending school in the camp? If not, why not?	In your opinion, what is the main barrier to children going to school in the camp? Is distance to school a major problem? Once a child is enrolled, what are the biggest sources of disruption for continued attendance?	
	<b>E2</b>	FGD	Education	Barriers to Education	What is the current condition of the learning environment (space, materials, classrooms, staff, etc.)?	N/A	
	<b>E3</b>	FGD	Education	Barriers to Education	Are children affected by hunger while they are at school (e.g. no breakfast, long distance to school, general malnutrition)?	N/A	
	<b>E4</b>	FGD	Education	Barriers to Education	Is the education situation the same for everyone within the camp?	Are you aware of any incidents within schools between children of different communities? What do you think about mixing with other communities at school? (Any specific communities?)	
	<b>CM1</b>	FGD	Camp Management	Sectorial Committees	Do you know that Sectorial Committees exist in the camp? If yes, what role and function do they have?	N/A	

	<b>CM2</b>	FGD	Camp Management	Sectorial Committees	Do the camp residents and sectorial committee members interact regularly? If so, what issues are typically discussed in these interactions?	N/A	
	<b>CM3</b>	FGD	Camp Management	Refugees/HC	How would you describe the relationship between/with the host community? What aspects in that relationship function well, what aspects are challenging?	N/A	
	<b>CM4</b>	FGD	Camp Management	Refugees/HC	What do you usually do to resolve conflict with the host community?	N/A	
	<b>CM5</b>	FGD	Camp Management	Refugees/HC	How can the relationship with the host community be improved?	N/A	
	<b>CM6</b>	FGD	Camp Management	Refugees/Refugees	How would you describe the relationship between/with the refugees from the other camp/s? What aspects in that relationship function well, what aspects are challenging?	N/A	
	<b>CM7</b>	FGD	Camp Management	Refugees/Refugees	What do you usually do to resolve conflict with the other camp/s if any?	N/A	
	<b>CM8</b>	FGD	Camp Management	Refugees/Refugees	How can the relationship refugees/refugees be improved?	N/A	
	<b>GN1</b>	FGD	Greatest need	Greatest need	Overall, what is your main concern or biggest need at the moment? Why?	N/A	
	<b>GN2</b>	FGD	Greatest need	Greatest need	What would help to address this concern/need? What is the potential solution to this problem?	N/A	



RESEARCH QUESTIONS ADDRESSED WITH STRUCTURED TOOL(S)

Research questions	IN #	Data collection method	Indicator group / sector	Indicator / Variable	Questionnaire Question	Instructions	Questionnaire Responses	Data collection level	Sampling	Maps planned?
What are the shelter needs of the refugee population in Maban?	S1	HH Interview	Shelter	% of HH by shelter type	In what type of shelter is the household living in?	Select one	No shelter (living in the open) Communal shelter (e.g. school) (Plastic sheet and wood with/without grass but no mud or brick walling), that provides no privacy Emergency Shelter (Plastic sheet and wood with/without grass but no mud or brick walling) that provides privacy and protection UNHCR Tent Round hut (Tukul) (mud, wood, and grass roof without plastic sheet) that provides privacy and protection Transitional Shelter (e.g. iron sheet roofing) that provides privacy and protection Other, please specify: _____	HH (Enumerators observation)	Probability / Simple random	No

<b>S2</b>	HH Interview	Shelter	Type of materials used to build the shelter	If selected shelter type, where did you get the materials for your shelter?	Multiple selection	Friend Inherited Vacated shelter Bush (host community) Bush (refugee camp) NFI Distribution (UNHCR/DRC) Refugee market Host community Market Other, please specify: _____	HH	Probability / Simple random	No
<b>S3</b>	HH Interview	Shelter	Type of WASH facilities accessible to the household	Does the structure have any of the following?	Multiple selection	Household Toilet/Latrine Household Shower/Bathing Area Communal latrine within accessible distance (less than 50 meters)	HH (Enumerators observation)	Probability / Simple random	No
<b>S4</b>	HH Interview	Shelter	% of HH by prefer shelter structure	Which type of shelter do you prefer?	Select one	The type constructed with poles The type constructed with mud bricks	HH	Probability / Simple random	No
<b>S5</b>	HH Interview	Shelter	% of HHs reporting shelter flooding	Has the shelter been affected by flood at any time during the last rainy season?	Select one	Yes No I don't know	HH	Probability / Simple random	No

What are the WASH needs of the refugee population in Maban?	W1	HH Interview	WASH	% of HH by reported water access time	How many minutes does it take to collect drinking water from your household, including walking to, time spent at the water point and walking back from the water point?	Select one	Under 30 minutes 30 minutes to less than 1 hour 1 hour to less than half a day Half a day More than half a day I don't know I don't want to answer	HH	Probability / Simple random	No
	W2	HH Interview	WASH	Type and number of water containers by household	What type of water container does the HH have?	Select one	Bucket 10 Lt Enter integer Bucket 20 Lt Enter integer Jerry can 10 Lt Enter integer Jerry can 20 Lt Enter integer Drum 250 Lt Enter integer I have no water containers Enter integer Other, please specify: _____ Enter integer	HH (Direct observation)	Probability / Simple random	No
	W3	HH Interview	WASH	Number of water collection rounds per day by household	How many rounds of water do you collect in a day?	Integer	Enter integer_	HH	Probability / Simple random	No

	<b>W4</b>	HH Interview	WASH	% of HH using latrines	Where do you and your family usually go to the toilet?	Multiple selection	Latrine built by NGO Bush Latrine built by community Family-owned and constructed latrine River/stream Other, please specify: _____	HH	Probability / Simple random	No
	<b>W5</b>	HH Interview	WASH	Most common hand washing practices by household	When do you wash your hands?	Multiple selection	Before Breastfeeding Before Cooking After cleaning child's bottom After visiting toilet Before eating I don't wash my hands Other, please specify: _____	HH	Probability / Simple random	No
	<b>W6</b>	HH Interview	WASH	% of HH by reported hand washing materials	What do you usually wash your hands with?	Select one	Soap Ash Water Nothing Other, please specify: _____	HH	Probability / Simple random	No

	<b>W7</b>	HH Interview	WASH	% of HH by reported hand washing facility type	Type of hand-washing facility present in the HH:	Enumerators observation	Bucket with water and soap Bucket with water and ash Bucket with no water and no soap/ash Tipi tap (5L jerry can) Plastic Cattles (1L) Nothing Other, please specify:_____	HH	Probability / Simple random	No
<b>What are the protection needs of the refugee population in Maban?</b>	<b>P1</b>	HH Interview	Protection	% of HH reporting temporary going and returning to Sudan in the last 6-months	Have you or anybody from your HH travelled to Sudan and came back to the camp in the last 6 months? (People going and returning to Blue Nile)	Select one	Yes No	HH	Probability / Simple random	No

<b>P2</b>	HH Interview	Protection	% of HH by reported reasons for temporary movement to Sudan	If yes, why are you/they returning to Sudan?	Multiple selection	To cultivate To herd livestock To trade Because security situation in the camp is not good Because security situation at home is improved To visit family or friends Forced recruitment (military) Voluntary recruitment (military) I don't know I don't want to answer Other, please specify: _____	HH	Probability / Simple random	No
<b>P3</b>	HH Interview	Protection	% of HH reporting permanent movements out of the camp	Has anybody from your HH left permanently the camp to another location in the last six months? (People moving permanently out of the camp)	Select one	Yes No	HH	Probability / Simple random	No



<b>P4</b>	HH Interview	Protection	% of HH by destination of permanent movements out of the camp	If yes, where are they moving to?	Multiple selection	Blue Nile Renk Paloich Juba Ethiopia Other, please specify: _____	HH	Probability / Simple random	No
<b>P5</b>	HH Interview	Protection	% of HH by reasons of permanent movements out of the camp	What was the reason?	Multiple selection	To cultivate To herd livestock To trade Because security situation in the camp is not good Because security situation at home is improved To visit family or friends Forced recruitment (military) Voluntary recruitment (military) I don't know I don't want to answer Other, please specify: _____	HH	Probability / Simple random	No

	P6	HH Interview	Protection	Most common protection concerns faced by women (aged 18 years or above) in the camp	What is the most common protection concern for women (aged 18 years or above) in the HH?	Select one	Killing or injury Rape FGM Involvement with military activities Sexuality orientation Psychosocial support Abduction Domestic violence Forced marriage Attacks by dogs in the camps Looting Family Separation Harassment to disclose information Medical services Protection from perpetrators I do not want to answer I don't know Other (specify) No issues (none)	HH	Probability / Simple random	No

	P7	HH Interview	Protection	Most common protection concerns faced by men (aged 18 years or above) in the camp	What is the most common protection concern for men (aged 18 years or above) in the HH?	Select one	Killing or injury Abduction Harassment to disclose information Forced recruitment Attacks by dogs in the camps Looting Family Separation Sexuality orientation Substance abuse I do not want to answer I don't know Other (specify) No issues (none)	HH	Probability / Simple random	No

	P8	HH Interview	Protection	Most common protection concerns faced by girls (aged 17 years or below) in the camp	What is the most common protection concern for girls below 18 years of age in the HH?	Select one	Killing or injury Rape GFM Involvement with military activities Sexual exploitation Targeted because sexuality orientation Abduction Domestic violence Early/Forced marriage Looting Family Separation Harassment to disclose information Violence at school Attacks by dogs in the camps Violence at market I do not want to answer Child labor I don't know Other (specify) No issues (none)	HH	Probability / Simple random	No
--	----	-----------------	------------	-------------------------------------------------------------------------------------------------------------------------	---------------------------------------------------------------------------------------------------------------	---------------	------------------------------------------------------------------------------------------------------------------------------------------------------------------------------------------------------------------------------------------------------------------------------------------------------------------------------------------------------------------------------------------------------------------------------------------------------------------------------------------------	----	-----------------------------------	----

	<b>P9</b>	HH Interview	Protection	Most common protection concerns faced by boys (aged 17 years or below) in the camp	What is the most common protection concern for boys below 18 years of age in the HH?	Select one	Killing or injury Child labor Sexual abuse Sexual orientation Abduction Forced recruitment Attacks by dogs in the camps Looting Family Separation Harassment to disclose information Violence at market Violence at school Substance abuse I do not want to answer I don't know Other (specify) No issues (none)	HH	Probability / Simple random	No
<b>What are the education needs of the refugee population in Maban?</b>	<b>E1</b>	HH Interview	Education	% of HH with children between 3-5 years old	Do you have any children between the age of 3-5 years old living here?	Select one	Yes No	HH	Probability / Simple random	No
	<b>E2</b>	HH Interview	Education	% of HH with children between 3-5 years old reporting children going to school	If yes, do they go to school (ECDC)?	Select one	Yes No	HH	Probability / Simple random	No

	<b>E3</b>	HH Interview	Education	% of HH by reasons of children between 3-5 years old not attending school	If they don't go to school, why?	Select multiple	There is no school/ECDC The school or ECDC is too far The location of the school is too dangerous I don't know Other, please specify: _____ _____	HH	Probability / Simple random	No
	<b>E4</b>	HH Interview	Education	% of HH with children between 6-17 years old	Do you have any children between the age of 6-17 years old living here?	Select one	Yes No	HH	Probability / Simple random	No
	<b>E5</b>	HH Interview	Education	% of HH with children between 6-17 years old reporting children going to school	If yes, do they go to school?	Select one	Yes No	HH	Probability / Simple random	No



<b>E6</b>	HH Interview	Education	% of HH by reasons children between 6-17 years old not attending school	If they don't go to school, why?	Multiple selection	<p>The school is too far</p> <p>They have no clothes/shoes</p> <p>They must tend livestock or work in agriculture</p> <p>The quality of the school is not very good</p> <p>The location of the school is too dangerous</p> <p>I don't want them to attend school with children of other communities</p> <p>There are not school supplies (books, uniforms, for example)</p> <p>They must work at the market or from home</p> <p>There is not secondary school in the camp</p> <p>They are getting married</p> <p>Lack of dignity kits</p> <p>Lack of sanitation facilities</p> <p>Lack of food at school</p> <p>I don't know</p> <p>Other, please specify: _____</p>	HH	Probability / Simple random	No
<b>E7</b>	HH Interview	Education	% of HH with children between 6-17 years old going to school every day	If they go to school, do they go every day?	Select one	Yes No	HH	Probability / Simple random	No
<b>E3</b>	HH Interview	Education	% of HH reporting girls not attending school	Are there girls between 6-17 years old living here that are not attending school?	Select one	Yes No	HH	Probability / Simple random	No

	<b>E4</b>	HH Interview	Education	% of HH by reasons of girls not attending school	If yes, what is the main reason they are not attending school?	Multiple selection	<p>The school is too far</p> <p>They must graze livestock or work in agriculture</p> <p>The quality of the school is not very good</p> <p>The location of the school is too dangerous</p> <p>I don't want them to attend school with children of other communities</p> <p>There are not school supplies (books, uniforms, for example)</p> <p>They must work at the market or from home</p> <p>There is not secondary school in the camp</p> <p>Lack of sanitary facilities/private latrines at school</p> <p>Lack of food at school</p> <p>I don't know</p> <p>Other, please specify: _____</p>	HH	Probability / Simple random	No
<b>What are the camp management needs of the refugee population in Maban?</b>	<b>C1</b>	HH Interview	Camp Management	% of HH reporting be aware of the existence of Sectorial Committees within the camp	Are you aware of the existence of Sectorial Committees within the camp?	Select one	Yes No	HH	Probability / Simple random	No

<b>C2</b>	HH Interview	Camp management	% of HH by reported type of known Sectoral Committee	List the Sectoral Committees that you know:	Multiple selection	Camp Welfare Committee (former Socio-Economic Affairs Committee) Women Committee Community Watch Group Youth Committee Shelter Committee Food Committee FSL Committee Environment Committee Education Committee Health Committee WASH Committee		Probability / Simple random	No
<b>C3</b>	HH Interview	Camp management	% of HH reporting be aware of the existence of regular meetings between SC and CM	Did you know that there are regular monthly meetings between the Sectoral Committee and Camp Management?	Select one	Yes No I don't know	HH	Probability / Simple random	No
<b>C4</b>	HH Interview	Camp management	% of HH reporting be aware of the existence of regular meetings between sectoral committee	Are there regular meetings in your village between sectoral committee members and camp residents?	Select one	Yes No I don't know	HH	Probability / Simple random	No

				ee membe rs and camp resident s						
	<b>C5</b>	HH Intervie w	Camp manage ment	% of HH by reporte d frequ ency of meeting s betwe en sectoral committ ee membe rs and camp resident	If yes, how often do these meetings take place?	Select one	Weekly Bi-weekly Monthly Every two months or more Don't know	HH	Probab ility / Simple random	No
<b>What are the food security needs of the refugee populati on in Maban?</b>	<b>F1. a</b>	HH Intervie w	Food Security	% of HH reportin g having consum ed any food from these food groups in the last 7 days by # of days	How many days in the past seven days, did members of your household consume any food from these food groups?	Integer	Number of days:	HH	Probab ility / Simple random	No

<b>F1. b</b>	HH Interview	Food Security	% of HH reporting having consumed any food from these food groups in the last 7 days by main source of food consumed	How many days in the past seven days, did members of your household consume any food from these food groups?	Select one	Codes for the source of food: 1 = Own production (crops, animal), 2 = Market (purchase on cash and credit), 3 = Food assistance, 4 = Hunting/Fishing/ Gathering, 5 = Borrowing, 6 = Exchange of food for labor, 7 = Gifts from neighbours/relatives	HH	Probability / Simple random	No
<b>F2</b>	HH Interview	Food Security	% of HHs by average number of meals consumed on a daily basis	On average (normally), how many meals does your family consume per day?	Integer	0, 1, 2, 3, 4 I don't know I don't want to answer	HH	Probability / Simple random	No

<b>F3</b>	HH Interview	Food Security	% of HH by % of income allocated to food	What percentage of your income goes to purchase food?	Select one	All of the income goes to purchase food Most of it goes to purchase food Half of it goes to purchase food Less than half of it goes to purchase food Almost none of it goes to purchase food I have no source of income	HH	Probability / Simple random	No
<b>F4</b>	HH Interview	Food Security	% of HH reporting relying on food coping strategies to cope with a lack of food or money to buy it	During the last 7 days, were there days (and, if so, how many) when your household had to employ the following strategies (to cope with a lack of food or money to buy it)?	Integer	Frequency score: Number of days out of the past seven (0 -7)	HH	Probability / Simple random	No
<b>F4.1</b>	HH Interview	Food Security	% of HH reporting relying on less preferred and less expensive food in the past 7 days	Rely on less preferred and less expensive food	Select one	Number of days out of the past seven (0 -7)	HH	Probability / Simple random	No



<b>F4.2</b>	HH Interview	Food Security	% of HH reporting limiting portion size at meals in the past 7 days	Limit portion size at meals	Select one	Number of days out of the past seven (0 -7)	HH	Probability / Simple random	No
<b>F4.3</b>	HH Interview	Food Security	% of HH reporting restricting consumption by adults in order for small children to eat in the past 7 days	Restrict consumption by adults in order for small children to eat	Select one	Number of days out of the past seven (0 -7)	HH	Probability / Simple random	No
<b>F4.4</b>	HH Interview	Food Security	% of HH reporting reducing number of meals eaten in a day in the past 7 days	Reduce number of meals eaten in a day	Select one	Number of days out of the past seven (0 -7)	HH	Probability / Simple random	No
<b>F4.5</b>	HH Interview	Food Security	% of HH reporting borrowing food or rely on help from friends or relatives in the past 7 days	Borrow food or rely on help from friends or relatives	Select one	Number of days out of the past seven (0 -7)	HH	Probability / Simple random	No

	<b>F4.6</b>	HH Interview	Food Security	% of HH reporting sending household members to eat elsewhere because of a lack of food/ money	Sent household members to eat elsewhere because of a lack of food/ money	Select one	1. Yes 2. No, because I did not face a shortage of food and it was not necessary 3. No, because I have already engaged in this activity in the last 12 months and cannot continue doing it 4. Not applicable – It is not possible for me to do this	HH	Probability / Simple random	No
--	-------------	--------------	---------------	-----------------------------------------------------------------------------------------------	--------------------------------------------------------------------------	------------	--------------------------------------------------------------------------------------------------------------------------------------------------------------------------------------------------------------------------------------------------------------	----	-----------------------------	----

	<b>F4.7</b>	HH Interview	Food Security	% of HH reporting selling more animals than usual for this time of year because of a lack of food/ money	Sold more animals than usual for this time of year because of a lack of food/ money	Select one	1. Yes 2. No, because I did not face a shortage of food and it was not necessary 3. No, because I have already sold those assets in the last 12 months and cannot continue doing it 4. Not applicable – It is not possible for me to do this, even if I needed to (household never had animals to sell, household sold or lost all animals more than one year ago)	HH	Probability / Simple random	No
--	-------------	--------------	---------------	----------------------------------------------------------------------------------------------------------	-------------------------------------------------------------------------------------	------------	-----------------------------------------------------------------------------------------------------------------------------------------------------------------------------------------------------------------------------------------------------------------------------------------------------------------------------------------------------------------------------	----	-----------------------------	----

	<b>F4.8</b>	HH Interview	Food Security	% of HH reporting selling household old assets, including furniture like chairs and tables, jewellery and beads, and things for cooking, like pots, because of a lack of food	Sold household assets, including furniture like chairs and tables, jewellery and beads, and things for cooking, like pots, because of a lack of food	Select one	1. Yes 2. No because I did not face a shortage of food and it was not necessary 3. o, because I have already sold those assets in the last 12 months and cannot continue doing it 4. Not applicable – It is not possible for me to do this, even if I needed to (sold or lost all household assets more than one year ago, no one is buying any household assets and I cannot sell even if I want to)	HH	Probability / Simple random	No
--	-------------	--------------	---------------	-------------------------------------------------------------------------------------------------------------------------------------------------------------------------------	------------------------------------------------------------------------------------------------------------------------------------------------------	------------	----------------------------------------------------------------------------------------------------------------------------------------------------------------------------------------------------------------------------------------------------------------------------------------------------------------------------------------------------------------------------------------------------------------	----	-----------------------------	----

	<b>F4.9</b>	HH Interview	Food Security	% of HH reporting borrowing money/purchase food on credit because of a lack of food/money more than usual during this time of year	Borrow money/purchase food on credit because of a lack of food/money more than usual during this time of year	Select one	1. Yes 2. No because I did not face a shortage of food and it was not necessary 3. No, because I already did this in the last 12 months and cannot continue doing it 4. Not applicable – It is not possible for me to do this, even if I needed to (there is nowhere to purchase food on credit or no one is loaning money at this even I wanted to do these things)	HH	Probability / Simple random	No
--	-------------	--------------	---------------	------------------------------------------------------------------------------------------------------------------------------------	---------------------------------------------------------------------------------------------------------------	------------	-------------------------------------------------------------------------------------------------------------------------------------------------------------------------------------------------------------------------------------------------------------------------------------------------------------------------------------------------------------------------------	----	-----------------------------	----

	<b>F4. 10</b>	HH Interview	Food Security	% of HH reporting asking other community members for a support of food because of a lack of food/ money	Asked other community members for a support of food because of a lack of food/ money	Select one	1. Yes 2. No, because I did not face a shortage of food and it was not necessary 3. No, because I have already engaged in this activity in the last 12 months and cannot continue doing it 4. Not applicable – It is not possible for me to do this	HH	Probability / Simple random	No
--	-------------------	-----------------	------------------	---------------------------------------------------------------------------------------------------------------------------------------------------	--------------------------------------------------------------------------------------------------------------------	---------------	-----------------------------------------------------------------------------------------------------------------------------------------------------------------------------------------------------------------------------------------------------------------------------------------------------	----	-----------------------------------	----

	<b>F4.11</b>	HH Interview	Food Security	% of HH reporting engaging in fishing, hunting, or gathering wild foods more than normal for this time of year because of a lack of food/ money	Engaged in fishing, hunting, or gathering wild foods more than normal for this time of year because of a lack of food/ money	Select one	1. Yes 2. No, because I did not face a shortage of food 3. No, because I have already engaged in this activity in the last 12 months and cannot continue doing it 4. Not applicable – It is not possible for me to do this (it is not the season for these activities, the areas where I would do this are not safe, these activities are regulated by local authorities, these resources are exhausted in my area)	HH	Probability / Simple random	No
--	--------------	--------------	---------------	-------------------------------------------------------------------------------------------------------------------------------------------------	------------------------------------------------------------------------------------------------------------------------------	------------	------------------------------------------------------------------------------------------------------------------------------------------------------------------------------------------------------------------------------------------------------------------------------------------------------------------------------------------------------------------------------------------------------------------------------	----	-----------------------------	----

	<b>F4.12</b>	HH Interview	Food Security	% of HH reporting withdrawing one or more children from school because of a lack of food/money	Withdrew one or more children from school because of a lack of food/money	Select one	1. Yes 2. No, because I did not face a shortage of food and it was not necessary 3. No, because I have already engaged in this activity in the last 12 months and cannot continue doing it 4. Not applicable – It is not possible for me to do this, even if I needed to (no children of right age, no school to send children to, children withdrawn more than one year ago)	HH	Probability / Simple random	No
--	--------------	--------------	---------------	------------------------------------------------------------------------------------------------	---------------------------------------------------------------------------	------------	----------------------------------------------------------------------------------------------------------------------------------------------------------------------------------------------------------------------------------------------------------------------------------------------------------------------------------------------------------------------------------------	----	-----------------------------	----



	<b>F4.13</b>	HH Interview	Food Security	% of HH reporting selling productive assets or means of transport, including tools for agriculture or fishing, bicycles, canoes, axe or panga because of a lack of food/ money	Sold productive assets or means of transport, including tools for agriculture or fishing, bicycles, canoes, axe or panga because of a lack of food/ money	Select one	1. Yes 2. No because I did not face a shortage of food and it was not necessary 3. No, because I already did this in the last 12 months and cannot continue doing it 4. Not applicable - It is not possible for me to do this (sold or lost all productive assets more than one year ago, no one is buying any productive assets and I cannot sell even if I want to)	HH	Probability / Simple random	No
--	--------------	--------------	---------------	--------------------------------------------------------------------------------------------------------------------------------------------------------------------------------	-----------------------------------------------------------------------------------------------------------------------------------------------------------	------------	--------------------------------------------------------------------------------------------------------------------------------------------------------------------------------------------------------------------------------------------------------------------------------------------------------------------------------------------------------------------------------	----	-----------------------------	----

	<b>F4.14</b>	HH Interview	Food Security	% of HH reporting reducing essential non-food expenses such as health, education, celebrations and holidays because of a lack of food/money	Reduced essential non-food expenses such as health, education, celebrations and holidays because of a lack of food/money	Select one	1. Yes 2. No because I did not face a shortage of food and it was not necessary 3. No, because I already did this in the last 12 months and cannot continue doing it 4. Not applicable – It is not possible for me to do this (there have not been schools, health facilities, or celebrations to contribute resources to for over one year, I stopped spending on these things more than one year ago)	HH	Probability / Simple random	No
--	--------------	--------------	---------------	---------------------------------------------------------------------------------------------------------------------------------------------	--------------------------------------------------------------------------------------------------------------------------	------------	------------------------------------------------------------------------------------------------------------------------------------------------------------------------------------------------------------------------------------------------------------------------------------------------------------------------------------------------------------------------------------------------------------------	----	-----------------------------	----

	<b>F4. 15</b>	HH Interview	Food Security	% of HH reporting sending more household members than normal to cattle and/or fishing camps because of a lack of food/ money	Sent more household members than normal to cattle and/or fishing camps because of a lack of food/ money	Select one	1. Yes 2. No, because I did not face a shortage of food and it was not 3. No, because I have already done this activity in the last 12 months and cannot continue doing it 4. Not applicable – It is not possible for me to do this (there are no cattle or fishing camps to go to)	HH	Probability / Simple random	No
--	-------------------	-----------------	------------------	------------------------------------------------------------------------------------------------------------------------------------------------------------------------------	---------------------------------------------------------------------------------------------------------------------------------------------	---------------	-------------------------------------------------------------------------------------------------------------------------------------------------------------------------------------------------------------------------------------------------------------------------------------------------------------------------------------------	----	-----------------------------------	----

	<b>F4.16</b>	HH Interview	Food Security	% of HH reporting selling the last remaining female animal of any kind, so that no female animals of that type remain, because of a lack of food/ money	Sold the last remaining female animal of any kind, so that no female animals of that type remain, because of a lack of food/ money	Select one	<p>1. Yes</p> <p>2. No, because I did not face a shortage of food and it was not necessary</p> <p>3. No, because I have already sold this asset in the last 12 months and cannot continue doing it</p> <p>4. Not applicable – It is not possible for me to do this (I lost all of my animals more than one year ago, I have never owned any animals)</p> <p>5. No, because I did not want to sell any more livestock even if I needed food</p>	HH	Probability / Simple random	No
--	--------------	--------------	---------------	---------------------------------------------------------------------------------------------------------------------------------------------------------	------------------------------------------------------------------------------------------------------------------------------------	------------	------------------------------------------------------------------------------------------------------------------------------------------------------------------------------------------------------------------------------------------------------------------------------------------------------------------------------------------------------------------------------------------------------------------------------------------------	----	-----------------------------	----

<b>F4.17</b>	HH Interview	Food Security	% of HH reporting slaughtering more animals than normal for this time of year because of a lack of food/ money	Slaughtered more animals than normal for this time of year because of a lack of food/ money	Select one	1. Yes 2. No, because I have already sold this asset in the last 12 months and cannot continue doing it 3. No, because I have already sold this asset in the last 12 months and cannot continue doing it 4. Not applicable – It is not possible for me to do this (I lost all of my animals more than one year ago, I have never owned any animals) 5. No, because I did not want to slaughter any more livestock, even if I needed food	HH	Probability / Simple random	No
<b>F4.18</b>	HH Interview	Food Security	% of HH reporting using community leaders or a local court to collect debts or bride wealth/ dowry, or to gain a support of food or other resources from another community member because of a lack of food/ money	Used community leaders or a local court to collect debts or bride wealth/ dowry, or to gain a support of food or other resources from another community member because of a lack of food/ money	Select one	1. Yes 2. No because I did not face a shortage of food 3. No, because I have already engaged in this activity in the last 12 months and cannot continue doing it 4. Not applicable – It is not possible for me to do this	HH	Probability / Simple random	No

			r because of a lack of food/ money						
<b>F5</b>	HH Interview	Food Security	% of HH by GFD waiting time	How many hours do you usually wait to receive GFD?	Select one	Less than 1 hour 1 hour 2 hours 3 hours More than 3 hours We don't receive GFD I don't know	HH	Probab ility / Simple random	No
<b>F6</b>	HH Interview	Food Security	% of HH by # of weeks a GFD lasts in the HH	How many weeks does the GFD food usually last in your household ?	Select one	Less than 1 week 1 week 3 weeks 4 weeks I don't know We don't receive GFD	HH	Probab ility / Simple random	No
<b>F7</b>	HH Interview	Food Security	% of HH reportin g items price increas e	What specific food items, from the list below, have increased significantl y in pricing in the market in the last three months?	Select one	How has prices changed (0 = Not present in market, 1 = decreased, 2 = stayed the same, 3 = increased)	HH	Probab ility / Simple random	No

What are the livelihoods needs of the refugee population in Maban?	L1	HH Interview	Livelihoods	% of HH reporting having planted last year	Have you cultivated anything during the last year?	Select one	Yes No	HH	Probability / Simple random	No
	L2	HH Interview	Livelihoods	% of HH by reported land used for cultivation	If yes, what land did you use?	Select one	Host Community Land Land inside the refugee Camp Land in the place of origin (Sudan) Other, please specify: _____	HH	Probability / Simple random	No
	L3	HH Interview	Livelihoods	% of HH reporting owning livestock	Does your HH own any livestock even if they are not here now (goats, cows, sheeps)?	Select one	Yes No	HH	Probability / Simple random	No
	L4	HH Interview	Livelihoods	% of HH by reported land used for grazing livestock	If yes, where do you graze the livestock?	Select one	Host Community Land Land inside the refugee Camp Land in the place of origin (Blue Nile) Other, please specify: _____ I do not want to disclose this info	HH	Probability / Simple random	No

	L5	HH Interview	Livelihoods	% of HH reporting being involved in the following activities, by gender	Are the women/men of your household currently involved in any of the following activities?	Multiple selection, disaggregated by gender	Cultivating (crops) Collecting firewood/charcoal for selling Livestock (small animals such as rabbits) Livestock (big animals such as goats, cows, donkeys) Casual labor Earning salaries Remittances (receiving money from relatives or friends outside the camp) I don't know Other, please specify: _____ _____	HH	Probability / Simple random	No



	<b>L6</b>	<i>HH Interview</i>	<i>Livelihoods</i>	<i>% of HH by reported primary source of income</i>	<i>What is your primary source of income?</i>	<i>Select one</i>	<i>Cultivating (crops) Collecting firewood/charcoal for selling/forest products Livestock Casual labor Earning salaries Remittances (receiving money from relatives or friends outside the camp) Selling goods in the market Relying on / selling humanitarian assistance I don't have any source of income I don't know Other, please specify: _____ _____</i>	<i>HH</i>	<i>Probability / Simple random</i>	<i>No</i>

L7	HH Interview	Livelihoods	% of HH by reported secondary source of income	What is your secondary source of income?	Select one	Cultivating (crops) Collecting firewood/charcoal for selling Livestock Casual labor Earning salaries Remittances (receiving money from relatives or friends outside the camp) Selling goods in the market Relying on / selling humanitarian assistance I don't have a secondary source of income I don't know Other, please specify: _____ _____	HH	Probability / Simple random	No
L8	HH Interview	Livelihoods	% of HH reporting having outstanding debts	Does your HH have any outstanding debts?	Select one	Yes No	HH	Probability / Simple random	No
L9	HH Interview	Livelihoods	% of HH by type of debtor	If yes, from whom have you borrowed money?	Multiple selection	Family Friends NGOs Community leader Business man VSLA groups Other, please specify: _____ _____	HH	Probability / Simple random	No

What are the environmental needs of the refugee population in Maban?	E1	HH Interview	Environment	% of HH by reported type of source of fuel for cooking and lighting	What are your main sources of fuel for cooking and lighting?	Multiple selection	Charcoal Wood Maize/sorghum etc stalks Lalobe seeds Other, please specify: _____	HH	Probability / Simple random	No
	E2	HH Interview	Environment	% of HH by reported location of collection of fuel	How do you acquire these fuel sources?	Multiple selection	I buy them in the market I collect them from the bush From NGO distribution I don't know Other, please specify: _____	HH	Probability / Simple random	No
	E3	HH Interview	Environment	% of HH by reported gender of fuel collection	Who collects the fuel in the household?	Multiple selection	Women Men Girls (below 18 years of age) Boys (below 18 years of age)	HH	Probability / Simple random	No
	E4	HH Interview	Environment	% of HH by reported time to collect fuel	How long (time) does it take from your house a round trip to get the fuel?	Select one	Less than one hour 1-3 hours 4-6 hours More than 6 hours I don't know	HH	Probability / Simple random	No
	E5	HH Interview	Environment	% of HH by reported time in a week fuel need to be collected	How many times a week must it be collected?	Select one	Less than once a week Once a week Twice a week 3 times a week More than 3 times a week I don't know	HH	Probability / Simple random	No

<b>E6</b>	HH Interview	Environment	% of HH by reported used cooking material	What cooking equipment do you use to cook your food in your household ?	Select one	Charcoal on the ground Clay Stove (Energy saving stove) Stove made of wire (kanun) Three stone (open fire) Other, please specify: _____	HH	Probability / Simple random	No
<b>G1</b>	HH Interview	Greatest Need	% of HH by reported greatest need	What is the most important/ greatest need affecting your household in term of everyday life ?	Select one	Security Access to Food Access to Shelter Access to Water Access to NFIs Access to Education Access to Employment / income-generating activities Access to Healthcare None I don't know I don't want to answer Other, please specify: _____ —	HH	Probability / Simple random	No

## 5. Data Management Plan

<b>Administrative Data</b>			
Research Cycle name	Enhancing Information Management, Analysis and Mapping for UNHCR		
Project Code	32DQW		
Donor	UNHCR		
Project partners	Refugee Response partners		
Research Contacts	Pittam Helen <a href="mailto:helen.pittam@reach-initiative.org">helen.pittam@reach-initiative.org</a> Olivieri Matteo <a href="mailto:matteo.olivieri@reach-initiative.org">matteo.olivieri@reach-initiative.org</a>		
Data Management Plan Version	Date: 10/09/2018	Version: Version 1	
Related Policies	None		
<b>Documentation and Metadata</b>			
What documentation and metadata will accompany the data? <i>Select all that apply</i>	<input checked="" type="checkbox"/>	Data analysis plan	<input checked="" type="checkbox"/> Data Cleaning Log, including: <input checked="" type="checkbox"/> Deletion Log <input checked="" type="checkbox"/> Value Change Log
	<input checked="" type="checkbox"/>	Code book	<input checked="" type="checkbox"/> Data Dictionary
	<input type="checkbox"/>	Metadata based on HDX Standards	<input checked="" type="checkbox"/> Documentation for FGD and KIs
<b>Ethics and Legal Compliance</b>			
Which ethical and legal measures will be taken?	<input checked="" type="checkbox"/>	Consent of participants to participate	<input checked="" type="checkbox"/> Consent of participants to share personal information with other agencies
	<input checked="" type="checkbox"/>	No collection of personally identifiable data will take place	<input checked="" type="checkbox"/> Gender, child protection and other protection issues are taken into account
	<input checked="" type="checkbox"/>	All participants reached age of majority	[Other, Specify]
Who will own the copyright and Intellectual Property Rights for the data that is collected?	NA. IMPACT/ REACH will own the data and it will be made public		
<b>Storage and Backup</b>			
Where will data be stored and backed up during the research?	<input type="checkbox"/>	IMPACT/REACH Kobo Server	<input type="checkbox"/> Other Kobo Server: <i>[specify]</i>
	<input type="checkbox"/>	IMPACT Global Physical / Cloud Server	<input checked="" type="checkbox"/> Country/Internal Server
	<input checked="" type="checkbox"/>	On devices held by REACH staff	<input type="checkbox"/> Physical location <i>[specify]</i>
	<input type="checkbox"/>		
Which data access and security measures have been taken?	<input checked="" type="checkbox"/>	Password protection on devices/servers	<input checked="" type="checkbox"/> Data access is limited to REACH and UNHCR staff
	<input type="checkbox"/>	Form and data encryption on data collection server	
	<input type="checkbox"/>	[Other, Specify]	
<b>Preservation</b>			
Where will data be stored for long-term preservation?	<input type="checkbox"/>	IMPACT / REACH Global Cloud / Physical Server	<input type="checkbox"/> OCHA HDX
	<input checked="" type="checkbox"/>	REACH Country Server	<input type="checkbox"/> [Other, Specify]
<b>Data Sharing</b>			
Will the data be shared publicly?	<input checked="" type="checkbox"/>	Yes	<input type="checkbox"/> No, only with mandating agency / body

Will all data be shared?	<input checked="" type="checkbox"/>	Yes	<input type="checkbox"/>	No, only anonymized/ cleaned/ consolidated data will be shared
	<input type="checkbox"/>	No, [Other, Specify]		
Where will you share the data?	<input checked="" type="checkbox"/>	REACH Resource Centre	<input type="checkbox"/>	OCHA HDX
	<input type="checkbox"/>	HumanitarianResponse	<input type="checkbox"/>	[Other, Specify]
<b>Responsibilities</b>				
Data collection	Olivieri Matteo, GIS Officer, <a href="mailto:matteo.olivieri@reach-initiative.org">matteo.olivieri@reach-initiative.org</a>			
Data cleaning	Olivieri Matteo, GIS Officer, <a href="mailto:matteo.olivieri@reach-initiative.org">matteo.olivieri@reach-initiative.org</a>			
Data analysis	Olivieri Matteo, GIS Officer, <a href="mailto:matteo.olivieri@reach-initiative.org">matteo.olivieri@reach-initiative.org</a>			
Data sharing/uploading	Olivieri Matteo, GIS Officer, <a href="mailto:matteo.olivieri@reach-initiative.org">matteo.olivieri@reach-initiative.org</a>			

## 6. Monitoring & Evaluation Plan

- Please complete the M&E Plan column in the table and use the corresponding Tools in the Monitoring & Evaluation matrix to implement the plan during the research cycle.

IMPACT Objective	External M&E Indicator	Internal M&E Indicator	Focal point	Tool	Will indicator be tracked?
Humanitarian stakeholders are accessing IMPACT products	Number of humanitarian organisations accessing IMPACT services/products  Number of individuals accessing IMPACT services/products	# of downloads of x product from Resource Center	Country request to HQ	User_log	X Yes
		# of downloads of x product from Relief Web	Country request to HQ		X Yes
		# of downloads of x product from Country level platforms	Country team		X Yes
		# of page clicks on x product from REACH global newsletter	Country request to HQ		X Yes
		# of page clicks on x product from country newsletter, sendingBlue, bit.ly	Country team		<input type="checkbox"/> Yes
		# of visits to x webmap/x dashboard	Country request to HQ		X Yes
IMPACT activities contribute to better program implementation and coordination of the humanitarian response	Number of humanitarian organisations utilizing IMPACT services/products	# references in HPC documents (HNO, SRP, Flash appeals, Cluster/sector strategies)	Country team	Reference_log	Running log to be kept of all contributions, inputs and engagement
		# references in single agency documents			Running log to be kept of all contributions, inputs and engagement
Humanitarian stakeholders are using IMPACT products	Humanitarian actors use IMPACT evidence/products as a basis for decision making, aid planning and delivery  Number of humanitarian documents (HNO, HRP,	Perceived relevance of IMPACT country-programs	Country team	Usage_Feed back and Usage_Survey template	Usage survey to be conducted at the end of the research cycle related to all outputs, targeting at least 20 partners
		Perceived usefulness and influence of IMPACT outputs			Usage survey to be conducted at the end of the research cycle related to all outputs, targeting at least 20 partners
		Recommendations to strengthen IMPACT programs			Usage survey to be conducted at the end of the research cycle related to all outputs, targeting at least 20 partners

	cluster/agency strategic plans, etc.) directly informed by IMPACT products	Perceived capacity of IMPACT staff			Usage survey to be conducted at the end of the research cycle related to all outputs, targeting at least 20 partners
		Perceived quality of outputs/programs			
		Recommendations to strengthen IMPACT programs			
Humanitarian stakeholders are engaged in IMPACT programs throughout the research cycle	Number and/or percentage of humanitarian organizations directly contributing to IMPACT programs ( <i>providing resources, participating to presentations, etc.</i> )	# of organisations providing resources (i.e.staff, vehicles, meeting space, budget, etc.) for activity implementation	Country team	Engagement_log	X Yes
		# of organisations/clusters inputting in research design and joint analysis			X Yes
		# of organisations/clusters attending briefings on findings;			X Yes



