



# Bor Snapshot

Bor South County, Jonglei State, South Sudan

South Sudan Displacement Crisis

November 2015

## Summary

Bor protection of civilian site (PoC) site was established in December 2013 following outbreaks of violence which forced people into the UNMISS base for refuge. In September 2014 PoC was relocated to the current site.

Population remains stable with occasional arrivals for reunification purposes. Camp management addressed major floods in the PoC in November. However, with the support of IOM and UNMISS the situation was stabilised.

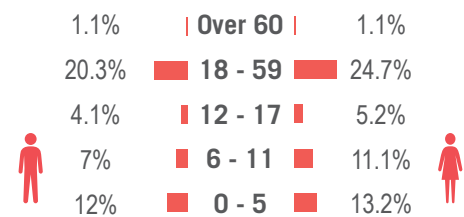
Data was provided by IOM DTM (03/11/2015) and camp manager (as of 06/11/2015) spatial data was provided by REACH (as of 23/01/2015).

## Implementing Agencies

	<b>EDUCATION</b>	INTERSOS, Unicef
	<b>FOOD</b>	WFP, JAM, SAADO, Save the Children
	<b>HEALTH</b>	Health Link, WHO, UNFPA
	<b>PROTECTION</b>	UNHCR (SFP), Intersos
	<b>SHELTER / NFI</b>	Intersos, IOM
	<b>WASH</b>	IAS

## Demographics

44.5% male / 55.5% female\*



\*\* Population figure by IOM (as of 04 Nov 2015)

## Site Overview

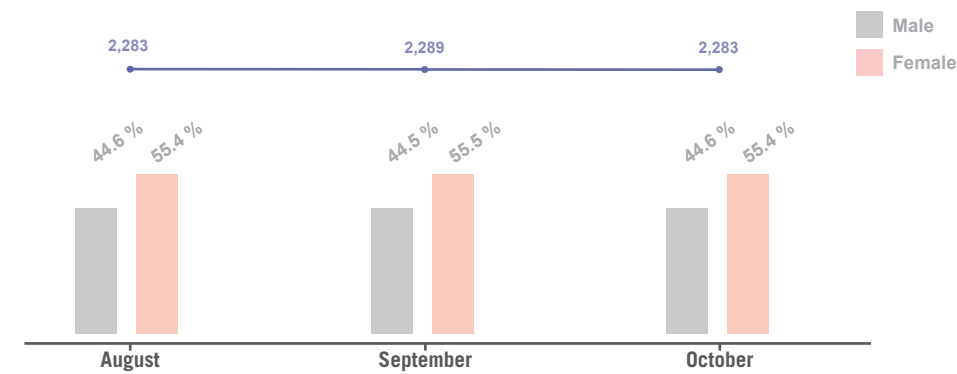
<b>Site management:</b>	ACTED
<b>Site population:</b>	2,283
<b>Accommodation:</b>	1,085 structures
<b>Planned capacity:</b>	1,245 structures
<b>Site area:</b>	80,905 m <sup>2</sup>
<b>IDP County of origin</b>	
1 <sup>st</sup> largest group	Akobo
Other large groups	Akobo

## CCCM Mechanisms

The following structures are in place:

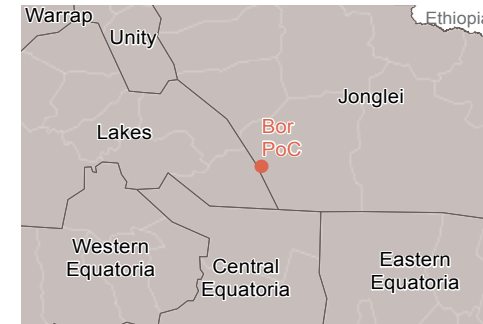
- ☒ Representative chairman
- ☒ Youth committee
- ☒ Women's leadership committee
- ☒ Block leaders
- ☒ Court of elders

## Demographic Trends\*\*



\*\* Figure extracted from the DTM. No extra data / information was available.

## Location Map

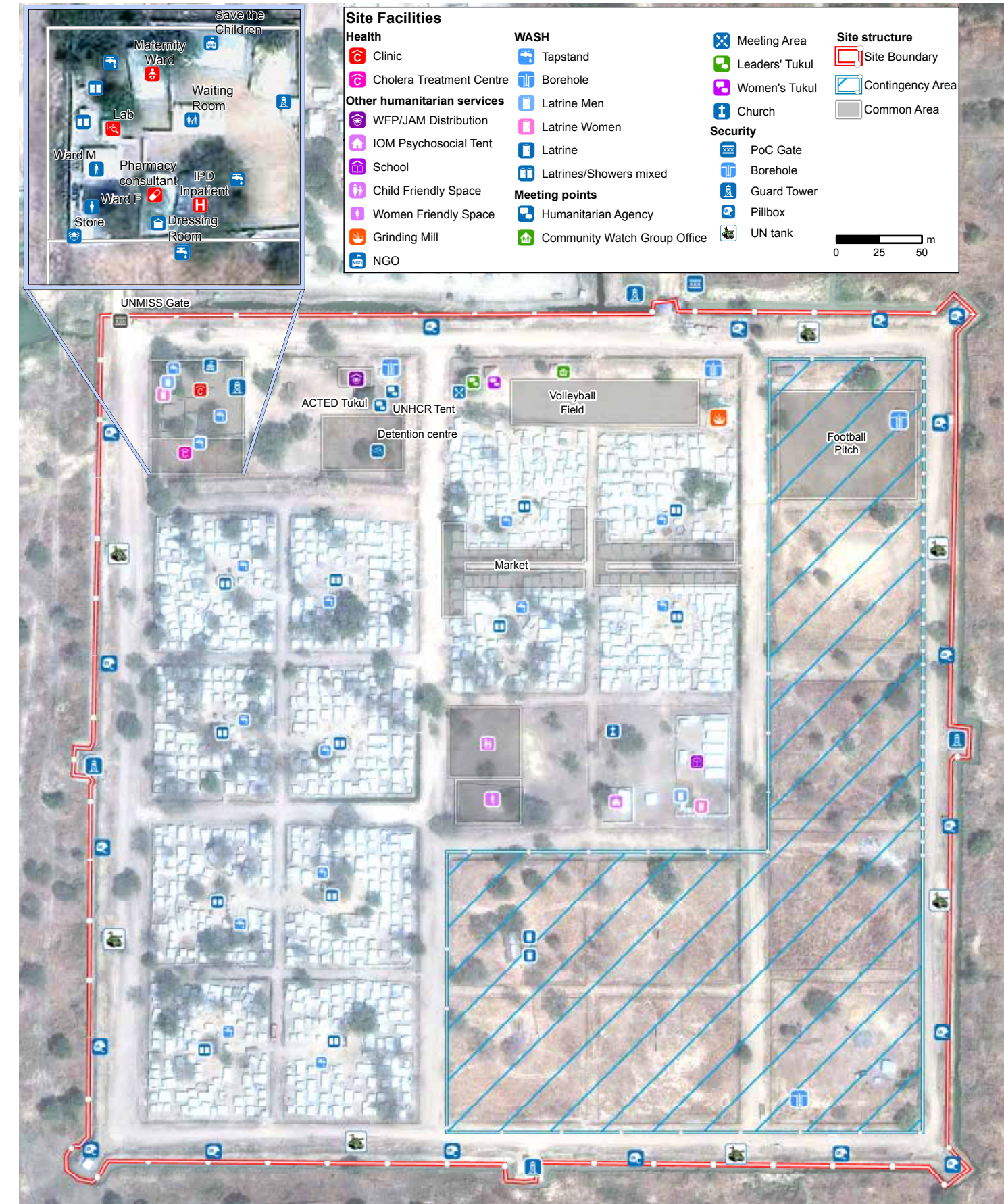


## Reported Priority Needs

Priority needs were reported and ranked by camp management as:

- 1 Protection** (people are leaving the PoC to collect fire wood)
- 2 Health** (mental disease, psycho social support)
- 3 Biometric verification**

## Bor Site Map



## Sectoral Overview

		Target***	Achieved	
<b>Food</b>	Food accessible on-site	Yes	Yes	●
	Markets physically accessible from site	Yes	Yes	●
<b>Health</b>	Health services are available on-site or within walking distance	Yes	Yes	●
<b>CCCM</b>	Average open area per person	min. 30 m <sup>2</sup>	35.3 m <sup>2</sup>	●
	% of families living in rakoobas/tukul	min 75%	less than 75%	●
	% of families living in makeshift shelters	0%	0%	●
	Average number of individuals per tent	max 5	2.1	●
<b>Shelter</b>	Average covered area per person****	min 4.2 m <sup>2</sup>	7 m <sup>2</sup>	●
	Liters of water available per person per day	min 15 L	more than 15 L	●
<b>Water Sanitation</b>	# of persons per latrine (m/f)	max 20	N/A	●
	# of persons per shower (m/f)	max 20	N/A	●

\*\*\* Targets are based on minimum standards agreed with the CCCM Cluster ● Target reached, ● Target more than 50% reached, ● Target less than 50% or not at all reached, ● No data

\*\*\*\* Bor PoC shelters averagely measure 15 m<sup>2</sup>