



# Nyal Port Monitoring

## Panyijiar County, Unity State, South Sudan

South Sudan Displacement Crisis  
August 2020

### CONTEXT AND METHODOLOGY

Nyal town is located in Northern Panyijiar County, Unity State, along the banks of the Sudd, one of the largest swamps in the world. Nyal is a key location for people travelling to and from Central and Southern Unity and nearby islands. Since the start of the crisis, Internally Displaced Persons (IDPs) from Unity and Jonglei States, perceiving Nyal as a safe location with ample resources, have been arriving in Nyal.

Since 01 November 2016, REACH has monitored the ports of Gap, Nyal and Katieth in Nyal town on a daily basis to determine the demographics, key push and pull factors, transportation routes and vulnerabilities of the newly arrived and departing population, and provide evidence for more effective humanitarian planning.

To ensure wide coverage of Nyal's three ports, the REACH team attempts to interview all arrivals and departures at the household level between 7:30 am and 6:30 pm (weekdays). This factsheet is based on data on 940 departures (185 HHs), 682 arrivals (180 HHs), and 9 transits (3 HHs), collected over 20 days from 4 - 31 August 2020. Data presented here is not representative, rather **indicative** of movement trends for the assessed population.<sup>1</sup>

### DEPARTURES FROM NYAL

#### Demographics



Children 51%  
Women 21%  
Men 28%

**74%** of departing households were partial households<sup>2</sup>

#### Vulnerabilities

**45%** of departing households reported that at least one member of the household was **breastfeeding**

**17%** of departing households reported at least one **elderly** member within the household

**12%** of departing households reported that at least one member of the household was **malnourished**

#### Push factors<sup>‡</sup>

Reported reasons for leaving Nyal:

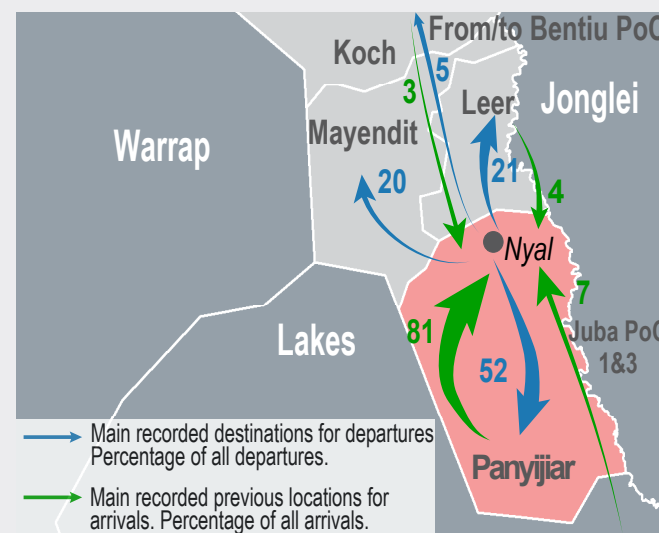
Distance from family/home	57%
Flooding	12%
Lack of food	9%
Lack of work opportunities	7%
Other	16%

#### Pull factors<sup>‡</sup>

Reported reasons for travelling to desired location from Nyal:

Proximity to family/home	60%
Presence of markets/goods	8%
Access to high/dry land	8%
Perceived availability of food <sup>3</sup>	7%
Presence of work opportunities	7%
Other	11%

### MAIN DESTINATIONS



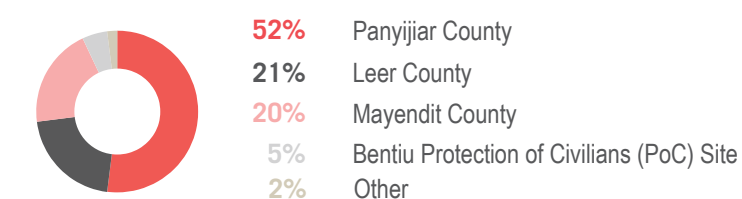
### Reasons for leaving Nyal

Primary reported push factors for leaving Nyal, May to August 2020:

	May 20	Jun 20	Jul 20	Aug 20
Distance from family/home	64%	55%	57%	57%
Flooding <sup>4</sup>	N/A	N/A	N/A	12%
Lack of food	4%	9%	18%	9%

### Destination county location

Reported county to which departing households were going:



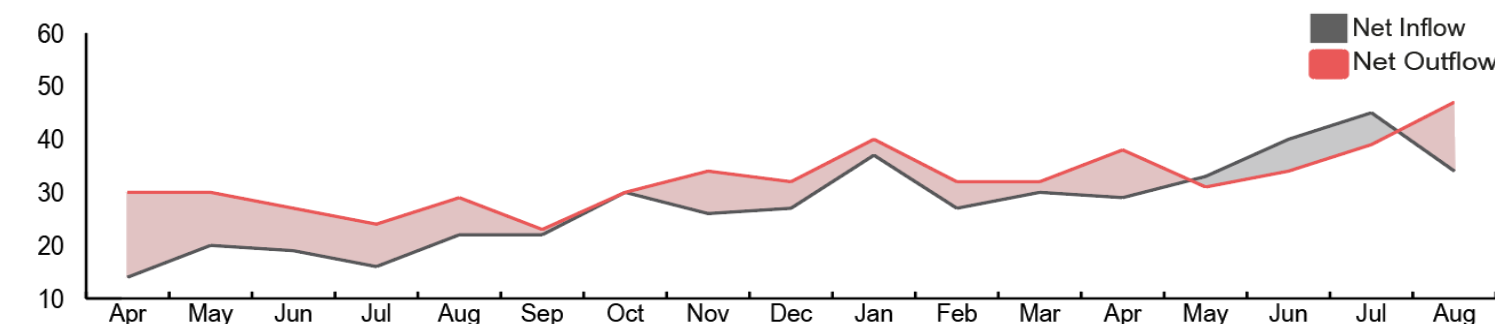
### Intended duration of stay at destination

Reported length of time that respondents intended to stay at destination:

Less than 1 month	8%
1 to 3 months	57%
4 to 6 months	8%
More than 6 months or permanently	23%
Do not know or choose not to answer	5%

### GENERAL MOVEMENT TRENDS<sup>1</sup>

Average daily number of individuals departing (red) and arriving (grey); April 2019 to August 2020.



### ARRIVALS TO NYAL

#### Demographics



Children 40%  
Women 29%  
Men 31%

**92%** of arriving households were partial households<sup>3</sup>

#### Vulnerabilities

**23%** of arriving households reported that at least one member of the household was **breastfeeding**

**18%** of departing households reported that at least one member of the household was **pregnant**

**13%** of departing households reported that at least one member of the household was **critically ill**

#### Pull factors

Reported reasons for choosing to come to Nyal:

Presence of markets/goods	33%
Perceived availability of food <sup>3</sup>	17%
Proximity to family/home	16%
Presence of health services	12%
Presence of shelter	7%
Business	6%
Other	9%

### Intended duration of stay in Nyal

Reported length of time that respondents intended to stay in Nyal:

Less than 1 month	55%
1 to 3 months	21%
4 to 6 months	8%
More than 6 months or permanently	13%
Do not know or choose not to answer	3%

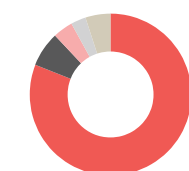
### Reasons for coming to Nyal

Primary reported pull factors for coming to Nyal, May to August 2020:

	May 20	Jun 20	Jul 20	Aug 20
Presence of markets/goods	24%	37%	33%	33%
Perceived availability of food <sup>2</sup>	20%	17%	17%	17%
Proximity to family/home	16%	13%	17%	16%

### Previous county location<sup>‡</sup>

Reported county from which arriving households were coming:



81% Panyijiar County  
7% UN House Juba PoCs  
4% Leer County  
3% Bentiu PoC  
5% Other

#### Push factors

Reported reasons for leaving previous location:

Lack of markets/goods	26%
Lack of food	24%
Lack of health services	12%
Distance from family/home	10%
Lack of shelter	8%
Flooding	8%
Other	12%

Notes:

‡. Percentages rounded to the nearest integer; responses may not add up to 100%.

1. Indicative trends; REACH does not record all arrivals and departures.

2. Partial households are those where not all members of the self-identified family unit were reportedly travelling

3. Composite indicator that combines: presence of food distributions, availability of local foods and planting crops.

4. Flooding was not previously included as a push/pull factor in the survey - however, as it was commonly reported under the "other" option this month, it was added as a separate answer