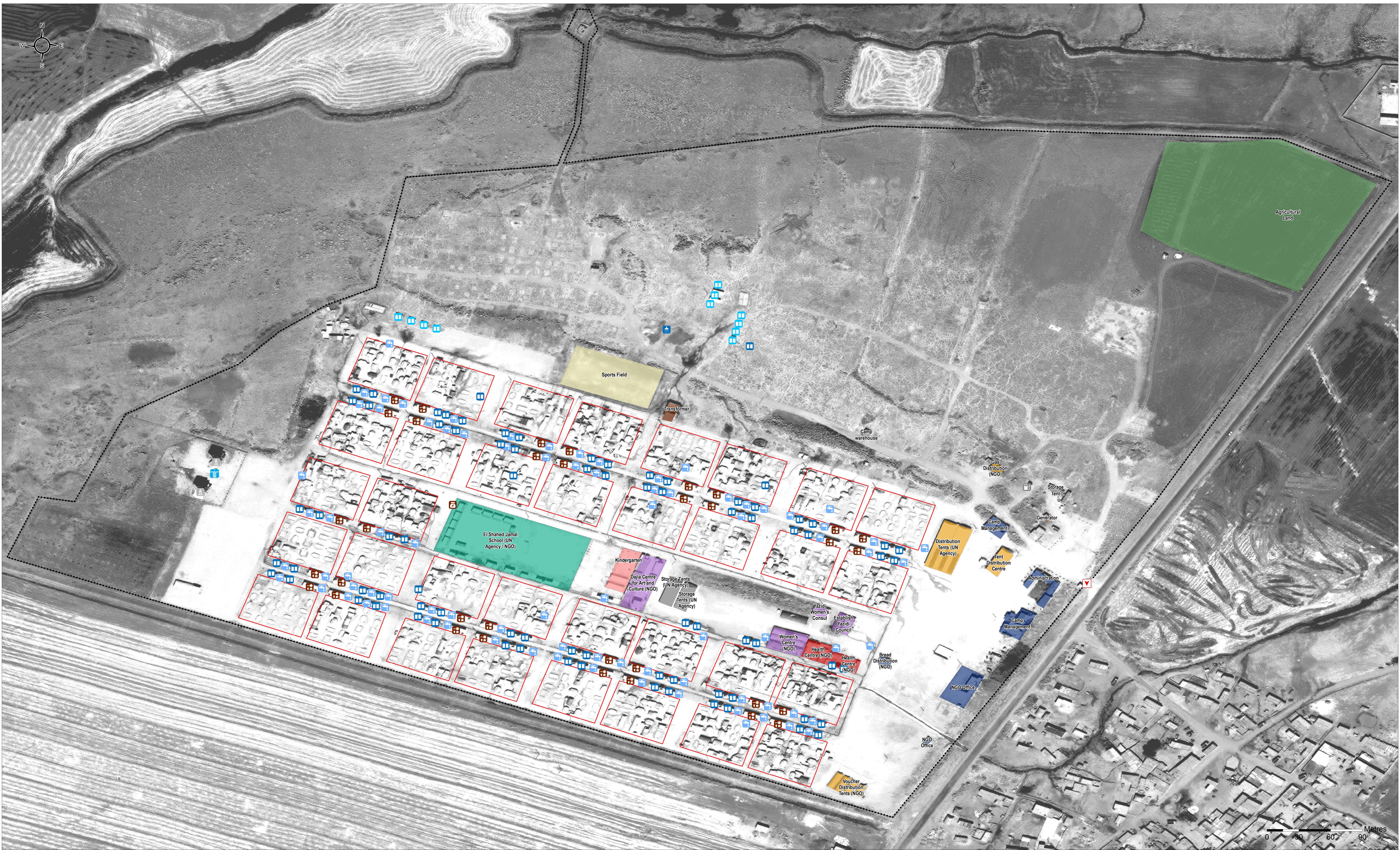


SYRIA- Newroz Refugee / IDP Camp

General Infrastructure - As of February 2018

For Humanitarian Purposes Only
Production date : 19 March 2018



- | | | | | | |
|---|--|--|---|--|--|
| ■ Agricultural | ■ Education | Blocks | Ⓜ Bore Hole | Ⓜ Latrine (under construction) | Ⓜ Water tower |
| ■ Camp management/ NGO office | ■ Health | Fence | Ⓜ Entrance | Ⓜ Latrine (multiple) | Ⓜ Water tank / tap stand |
| ■ CFS | ■ Services | | Ⓜ Fuel tank | Ⓜ Shower | |
| ■ Community area | ■ Storage | | Ⓜ Kitchen | Ⓜ Shop | |
| ■ Distribution | ■ Sports Field | | | | |

Data Sources:
Infrastructure: REACH
Satellite Imagery: WorldView-3 from 18 August 2017
Copyright: ©2017 DigitalGlobe
Source: US Department of State, Humanitarian Information Unit, NextView License
Projection: GCS WGS 1984
File: SYR_Map_Newroz_Camp_February2018
Contact: mena.reach@impact-initiatives.org

Note: Data, designations and boundaries contained on this map are not warranted to be error-free and do not imply acceptance by the REACH partners, associated, donors mentioned on this map.