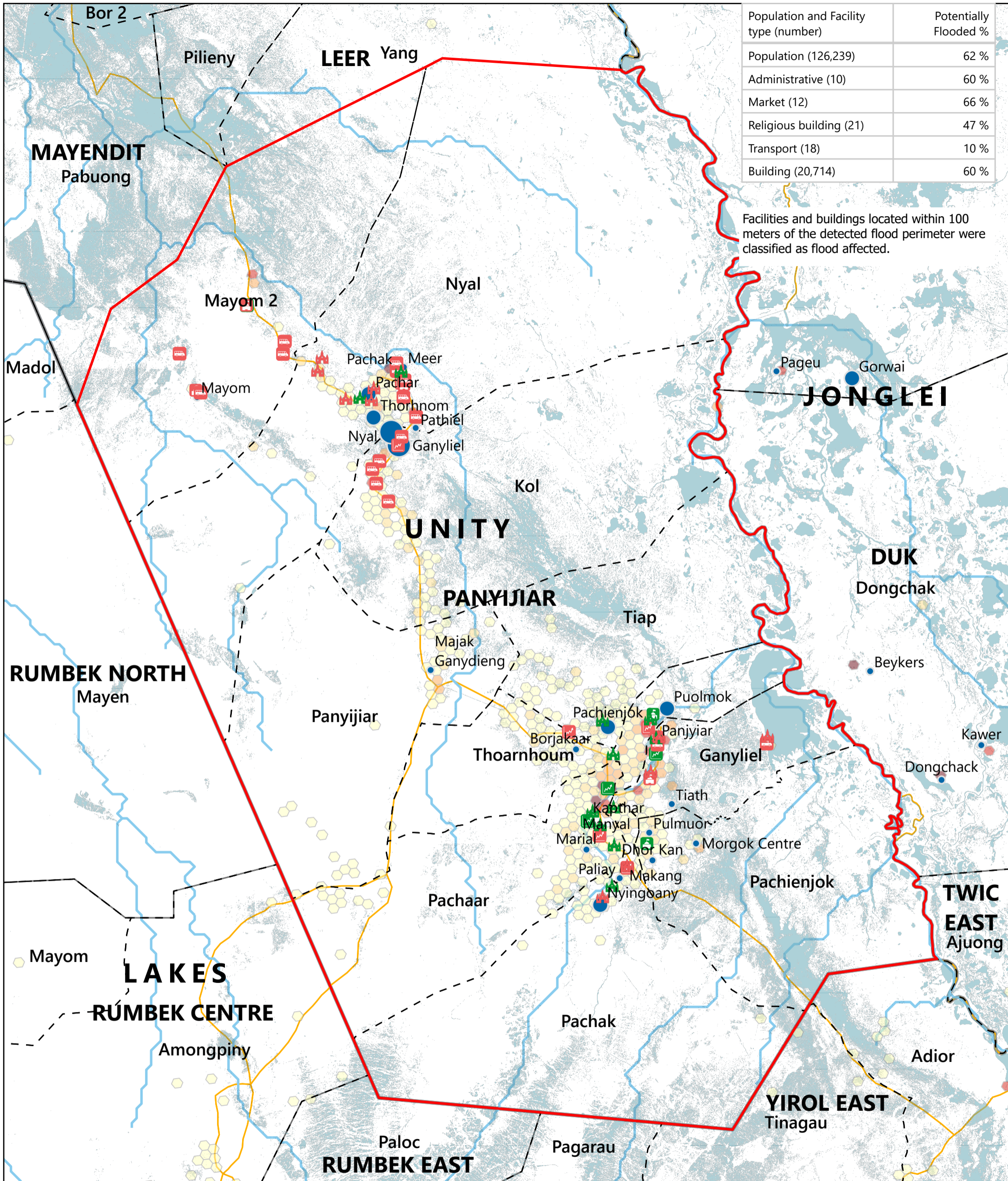


SOUTH SUDAN - Panyijar County

Flood Impact Map: Administrative & Other Facilities (October 2025)

For Humanitarian Purposes Only

Production Date: 22 October 2025



Population and Facility type (number)	Potentially Flooded %
Population (126,239)	62 %
Administrative (10)	60 %
Market (12)	66 %
Religious building (21)	47 %
Transport (18)	10 %
Building (20,714)	60 %

Facilities and buildings located within 100 meters of the detected flood perimeter were classified as flood affected.



Population (Kontur, 2023)

1 - 100
101 - 250
251 - 500
501 - 750
> 750

Satellite-detected flood extent (FEWSNET, as of 30th September 2025)

Unaffected Market	Unaffected Transport Facility
Potentially Affected Market	Potentially Affected Transport Facility
Unaffected Administrative Office	Unaffected Religious Centre
Potentially Affected Administrative Office	Potentially Affected Religious Centre

Settlements (Population)

	< 5,000
	5,001 - 10,000
	> 10,000

Roads
 River
 Payam
 Focus County
 County
 State

Data sources: Source: REACH, OCHA, UNMISS, IOM_DTM, UNOSAT, FEWSNET, WHO, IOM, DTM, Global Google-Microsoft Open Buildings Dataset (2023)
 Coordinate System: Name: GCS WGS 1984
 File: REACH_SSD_Map_Unity_Panyijar_Flood_Impact_Administrative_22_Oct_2025
 Contact: reach.mapping@impact-initiatives.org



Note: Data, designations and boundaries contained on this map are not warranted to be error-free and do not imply acceptance by REACH partners, associates or donors mentioned on this map.