

Summary

This profile provides an overview of water, sanitation and hygiene (WASH) infrastructure within Camp 3 in Ukhia, Cox's Bazar. Primary data for the sixth round was collected between 22 April - 12 May 2018.<sup>1</sup> Findings should be considered indicative only. The full camp dataset is available on [HDX](#).

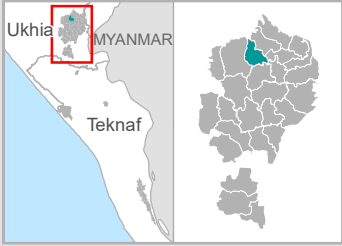
Site Overview

# of individuals:	40,140
# of households:	9,346
# of shelters:	4,582
# of individuals per shelter:	8.8

Key WASH Infrastructure

# of latrines: (% functional and safe <sup>2</sup> ):	1,279 (82%)
# of improved water sources: <sup>3</sup> (% functional):	391 (84%)
# of washrooms:	757

Location Map



Water Access

Three most commonly identified types of water points, by functionality:

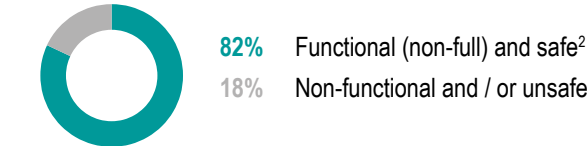


Key sectoral standards:	Target	Current Round	Achievement
# of people per functional improved water source <sup>3</sup>	max. 250	123	<div></div>
% of shelters with at least 1 functional improved water source <sup>3</sup> within 200m	100%	100%	<div></div>
% of functional improved water source with no latrine within 10m	100%	44%	<div></div>

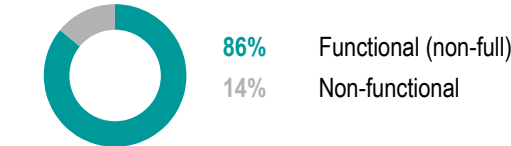
Sanitation

Latrine characteristics:

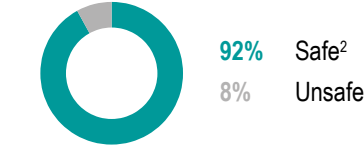
Functionality and safety



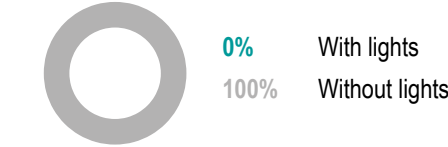
Functionality



Safety



Lighting



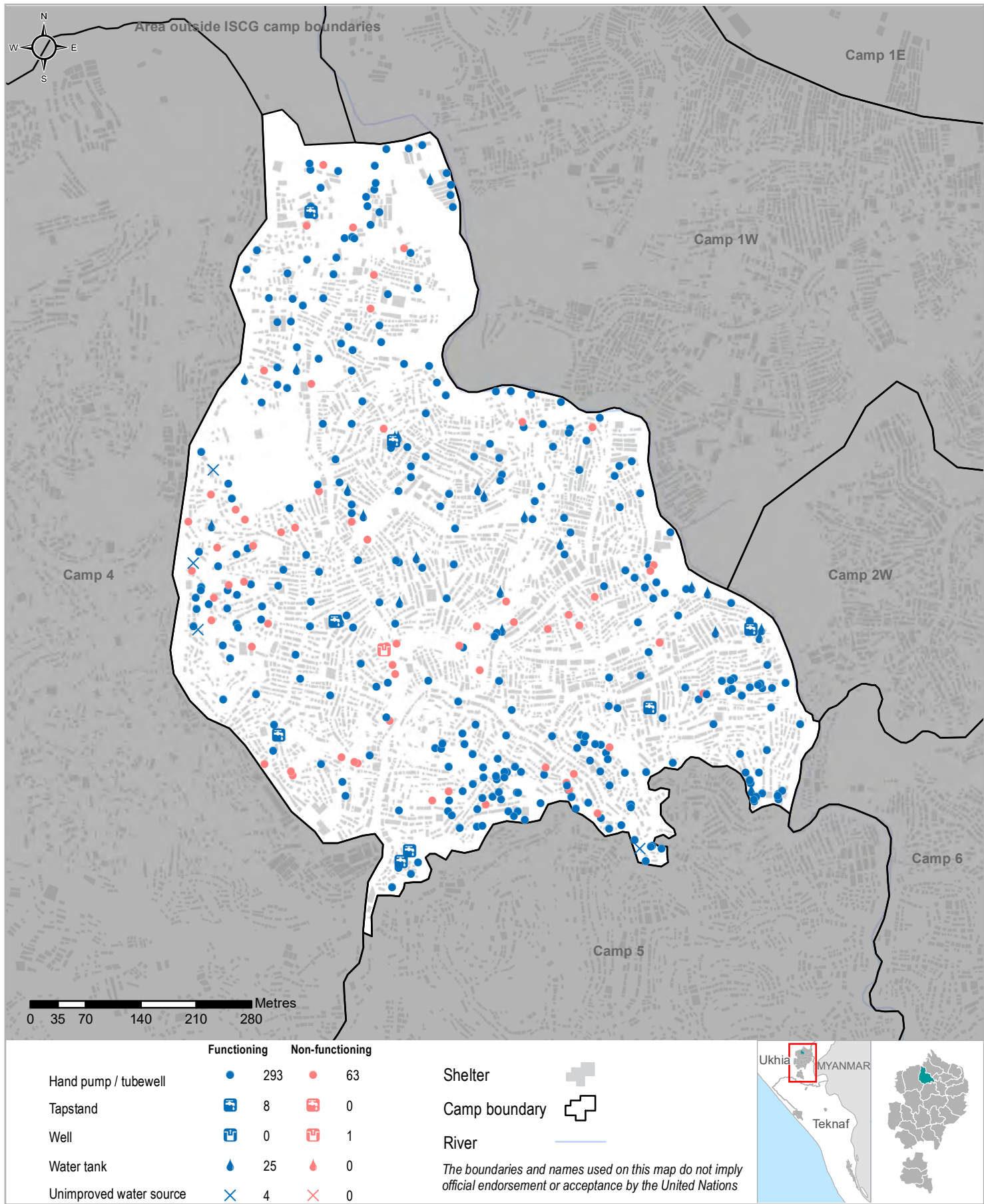
Key sectoral standards:	Target	Current Round	Achievement
# of people per functional (non-full) and safe latrine <sup>2</sup>	max. 20	38	<div></div>
# of people per functional (non-full) latrine	max. 20	36	<div></div>
# of people per safe latrine <sup>2</sup>	max. 20	34	<div></div>
% of shelters with at least one functional and safe latrine <sup>2</sup> block within 50m	100%	99%	<div></div>

Targets based on long term WASH Sector Standards / Indicators for the Rohingya response, Sphere Minimum Standards as well as Department of Public Health and Environment (DPHE) Minimum Standards.  Minimum standard/indicator reached,  75-99% of the minimum standard reached, or within 25% of minimum standard reached,  50-74% of the minimum standard reached, or within 26-50% of minimum standard reached,  Less than 50% of minimum standard reached, or within greater than 50% of minimum standard reached.

1 REACH enumerators conducted a full sweep of all sites and camps (as per boundaries defined by ISCG) and used a Kobo form to log all key infrastructure observed during this sweep.  
2 'Safe' refers to fully covered latrines (i.e. a latrine with four walls, a roof and a lockable door).  
3. This includes handpumps / tubewells, tapstands and water tanks.



Water Access





**Sanitation**

