



IDP Camp Profile - Al Khalidiya Markazi

Anbar, Iraq
January 2018

Management agency: Government
Manager/Focal point: Haitham Suleiman Nayel
Registration actor: Government

Summary

This profile provides an overview of conditions in Al Khalidiya Markazi camp. Primary data was collected through household surveys on 25/12/2017. Households were randomly sampled to a 95% confidence level and a 10% margin of error, based on population figures provided by CCCM. In some cases, additional information from camp managers has been used to support findings.

Camp Overview

of individuals: 576
of households: 140
Date opened: 3/15/2016
Occupied shelters: 138
Planned shelters: 345
Ongoing extension: no
Camp area: 54,400m²

Demographics

51% male / 49% female

1% | Over 60 | 2%
20% | 18-59 | 22%
9% | 12-17 | 9%
10% | 6-11 | 8%
9% | 0-5 | 8%



Location Map

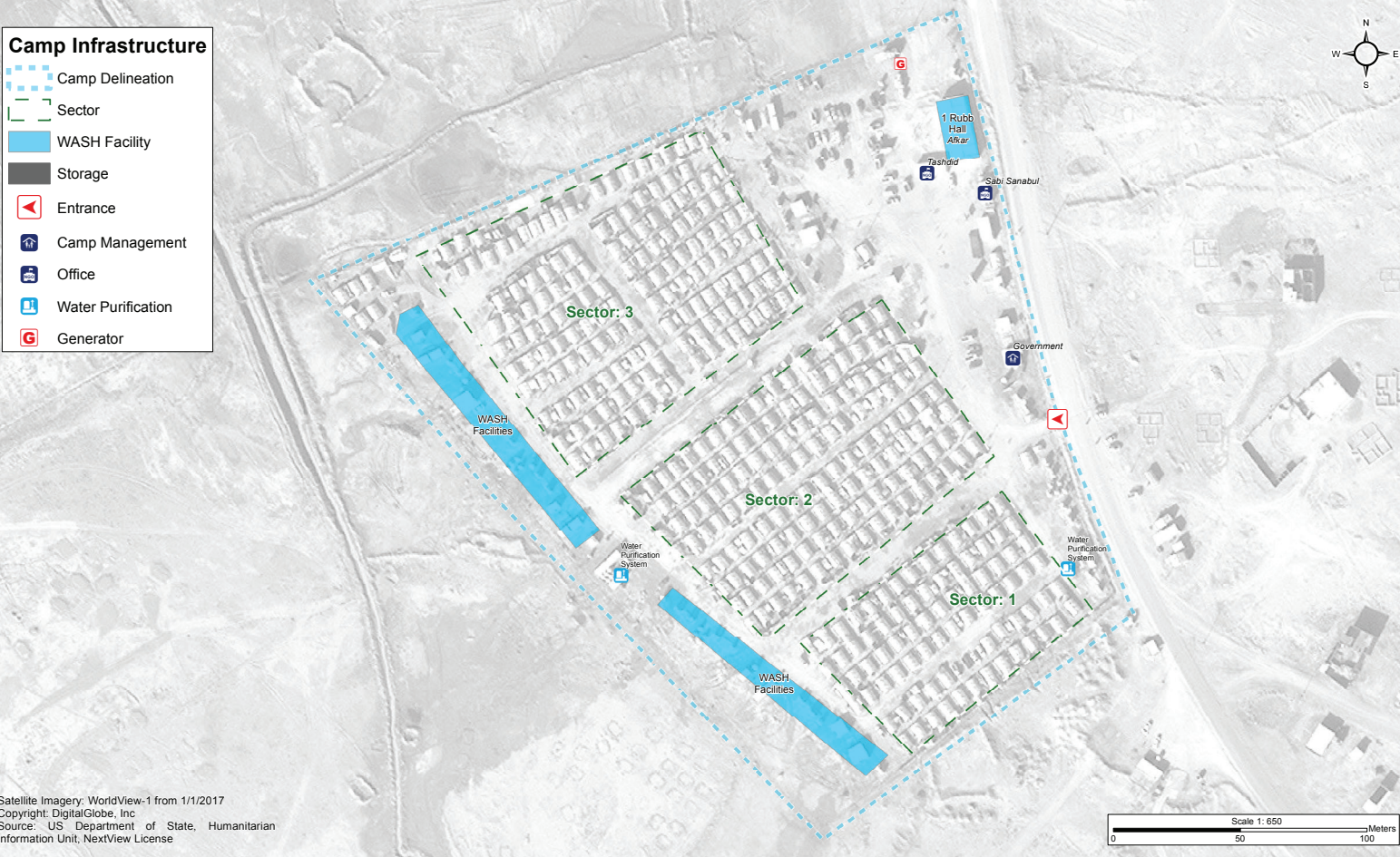


IDP Camp Map - Al Khalidiya Markazi

Lat. 33° 21' 0.487" N Long. 43° 33' 0.653" E

Camp Infrastructure

- Camp Delineation
- Sector
- WASH Facility
- Storage
- Entrance
- Camp Management
- Office
- Water Purification
- Generator



Satellite Imagery: WorldView-1 from 1/1/2017
Copyright: DigitalGlobe, Inc
Source: US Department of State, Humanitarian Information Unit, NextView License

Sectoral Minimum Standards

		Target	Previous Round	Current Round	Achievement
CCCM	Average open area per household	Min. 30m ²	114 m ²	294 m ²	●
Protection	% of IDPs registered on an individual basis (MODM/DDM)	100%	87%	82%	●
WASH	# of persons per latrine	Max. 20	13	16	●
	# of persons per shower	Max. 20	19	29	●
	Frequency of solid waste disposal	Min. weekly	Every month	Every week	●
Shelter	Average area covered per person	Min. 3.5m ²	5 m ²	7.5 m ²	●
	Average number of individuals per shelter	Max. 5	7	5	●
Food	% households accessed Family Food Parcel or equivalent in previous month	100%	n/a*	56%	●
Health	Health services available on-site or within walking distance	Yes	yes	yes	●
Education	% of children aged 6-11 attending formal school	100%	59%	48%	●
	% of children aged 12-17 attending formal school	100%	57%	37%	●

*Method of calculation for food distribution has changed from previous rounds

Targets based on minimum standards agreed with the CCCM Cluster, Iraq. Findings based on household-level data, enumerator field observations, and camp management documentation
● Minimum standard reached, ● 50-99% of minimum standard reached, ● Less than 50% of minimum standard reached or not at all





IDP Camp Profile - Al Khalidiya Markazi

Anbar, Iraq
January 2018



Protection

Vulnerable groups

Pregnant / lactating women	1%	
Chronically ill individual(s)	5%	■
Disabled individual(s)	0%	
Female headed households	17%	■

Intentions

45%	planned to move to a different location in next 3 months
13%	reported needing financial support to return and restart in order to return safely to their area of origin

Restrictions

36%	reported being able to leave the camp temporarily (e.g. to go to the market, for livelihood opportunities)
-----	--

Documentation

4%	reported that one or more member is missing one or more documents
100%	reported that at least one of the members missing documents is an adult (18+)

Top three missing documents reported by those households*

MODM letter	100%
ID card	100%
Graduation certificate	100%

Top two reasons for not attending education*

(of households with school-aged children not attending school)

Not allowed to leave camp	17%
No transport available	17%



Access to information

Top three information sources regarding area of origin*

From others who visited	68%	■
Personally visited	16%	■
Media	12%	■

Top three information needs*

Basic services	76%	■
Security situation	71%	■
Livelihood sources	70%	■



Livelihoods

32% reported not having an income source

Top three income sources*

Humanitarian aid	24%	■
Unskilled labour	21%	■
Government aid	13%	■

Top three reported livelihood coping strategies*

None	63%	■
Spent savings	15%	■
Charitable donations	10%	■



Priority Needs

Top 3 reported priority needs*

Food	100%	■
Employment	49%	■
Education	35%	■



WASH

Latrines

99%	reported access to public or communal latrines. Of those:
96%	reported latrines were lockable from the inside
84%	reported latrines had functioning lighting
97%	reported latrines were gender segregated

Top two most reported methods of waste removal

Collected	90%	■
Burnt	8%	■

Primary drinking water sources

76%	outdoor water point
17%	bottled water from the shop

Access to drinking water

9%	reported at least 24 consecutive hours without access to water in the month prior to the assessment
----	---



Shelter

46% reported flooding in their shelter in the previous year

Top observed shelter type

Tent

100%

29%

of tents have secondary cover

Top reported needed basic items*

Heating fuel	27%	■
Fuel storage	27%	■
Winter clothes	14%	■

Top reported needed winter item*

Kerosene heater	99%	■
-----------------	-----	---

Electricity access

Average number of hours of electricity per day	7
--	---



Food Security

Reported access to food assistance

56%	reported having received Public Distribution System (PDS) assistance in the month prior to the assessment
100%	reported access to a market within walking distance

Top two food consumption coping strategies*

Buy less expensive food	8%	■
Borrow food	1%	

*Respondents could select multiple responses

**Insufficient sample size; fewer than five respondents





IDP Camp Profile - Al Khalidiya Central

Anbar, Iraq
January 2018

Management agency: UNHCR
Manager/Focal point: Raad Sabar Eid
Registration actor: Government

Summary

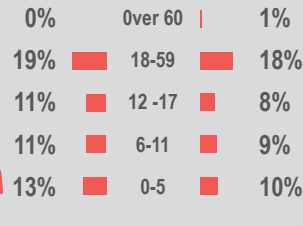
This profile provides an overview of conditions in Al Khalidiya Central camp. Primary data was collected through household surveys on 24/12/2017. Households were randomly sampled to a 95% confidence level and a 10% margin of error, based on population figures provided by CCCM. In some cases, additional information from camp managers has been used to support findings.

Camp Overview

of individuals: 4600
of households: 960
Date opened: 6/11/2016
Occupied shelters: 960
Planned shelters: 1250
Ongoing extension: no
Camp area: 1,062,821m²

Demographics

54% male / 46% female

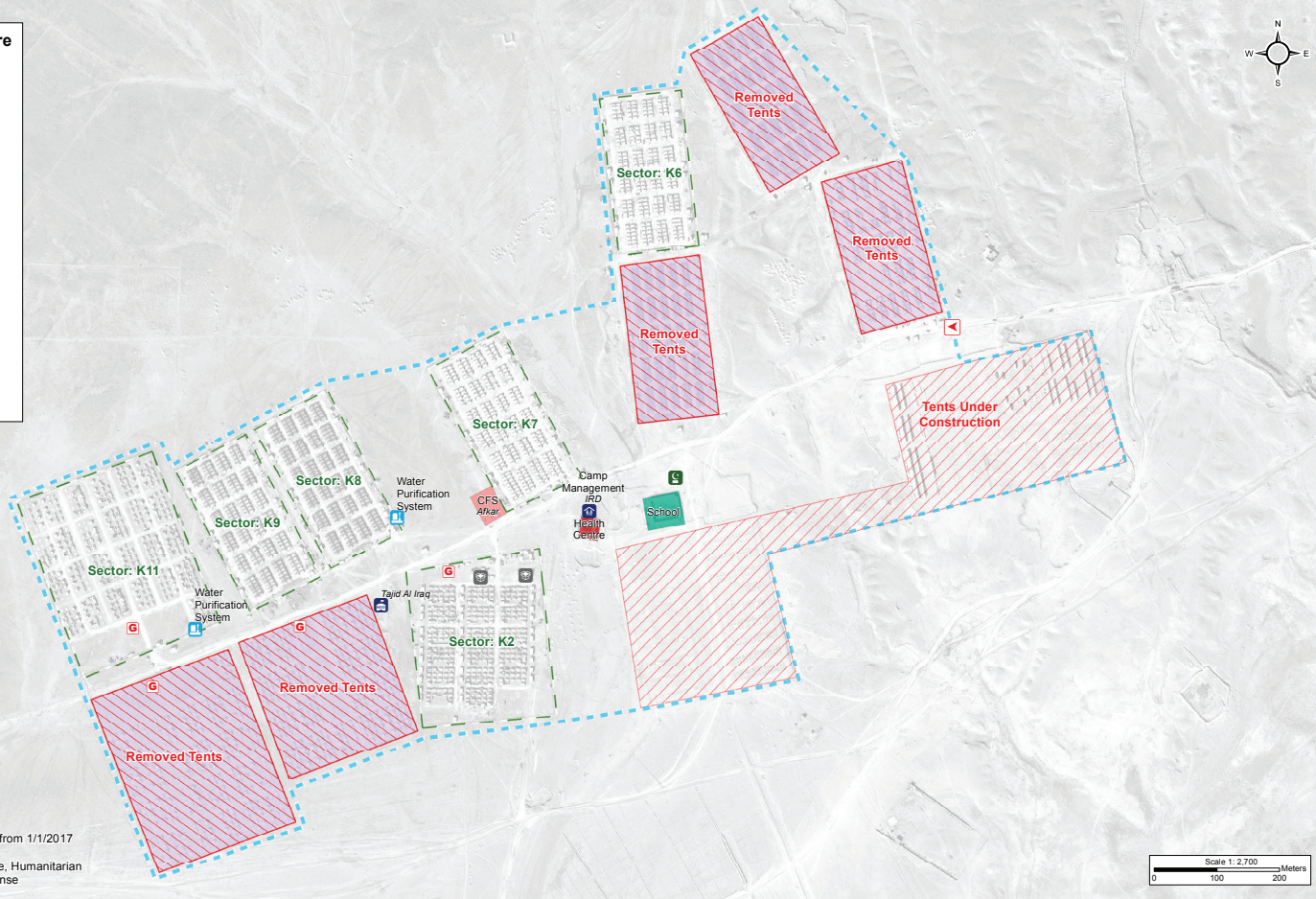
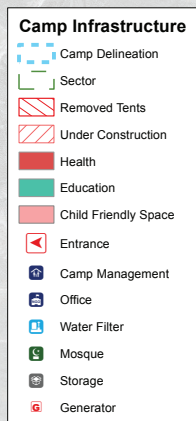


Location Map



IDP Camp Map - Al Khalidiya Central

Lat. 33° 21' 1.665" N Long. 43° 31' 3.085" E



Satellite Imagery: WorldView-3 from 1/1/2017
Copyright: DigitalGlobe, Inc.
Source: US Department of State, Humanitarian Information Unit, NextView License

Sectoral Minimum Standards

		Target	Previous Round	Current Round	Achievement
CCCM	Average open area per household	Min. 30m ²	994 m ²	1075 m ²	●
Protection	% of IDPs registered on an individual basis (MODM/DDM)	100%	120%	88%	●
WASH	# of persons per latrine	Max. 20	33	18	●
	# of persons per shower	Max. 20	43	18	●
	Frequency of solid waste disposal	Min. weekly	Every month	Every week	●
Shelter	Average area covered per person	Min. 3.5m ²	3.3 m ²	4 m ²	●
	Average number of individuals per shelter	Max. 5	6	6	●
Food	% households accessed Family Food Parcel or equivalent in previous month	100%	n/a*	42%	●
Health	Health services available on-site or within walking distance	Yes	no	yes	●
Education	% of children aged 6-11 attending formal school	100%	69%	47%	●
	% of children aged 12-17 attending formal school	100%	39%	41%	●

*Method of calculation for food distribution has changed from previous rounds

Targets based on minimum standards agreed with the CCCM Cluster, Iraq. Findings based on household-level data, enumerator field observations, and camp management documentation
● Minimum standard reached, ● 50-99% of minimum standard reached, ● Less than 50% of minimum standard reached or not at all





IDP Camp Profile - Al Khalidiya Central

Anbar, Iraq
January 2018



Protection

Vulnerable groups

Pregnant / lactating women	2%	
Chronically ill individual(s)	2%	
Disabled individual(s)	0%	
Female headed households	19%	

Intentions

27%	planned to move to a different location in next 3 months
10%	reported needing financial support to return and restart in order to return safely to their area of origin

Restrictions

35%	reported being able to leave the camp temporarily (e.g. to go to the market, for livelihood opportunities)
-----	--

Documentation

1%	reported that one or more member is missing one or more documents
n/a**	reported that at least one of the members missing documents is an adult (18+)

Top three missing documents reported by those households*

n/a**
n/a**
n/a**

Top two reasons for not attending education*

(of households with school-aged children not attending school)

Not allowed to leave camp	68%
Newly arrived	16%



Access to information

Top three information sources regarding area of origin*

From others who visited	61%
Personally visited	23%
Media	10%

Top three information needs*

Security situation	69%
Livelihood sources	66%
Basic services	65%



Livelihoods

17% reported not having an income source

Top three income sources*

Humanitarian aid	31%
Unskilled labour	30%
Unskilled agricultural labour	11%

Top three reported livelihood coping strategies*

None	80%
Take on debt	15%
Charitable donations	13%



Priority Needs

Top 3 reported priority needs*

Food	92%
Employment	55%
Education	39%



WASH

Latrines

100%	reported access to public or communal latrines. Of those:
99%	reported latrines were lockable from the inside
99%	reported latrines had functioning lighting
77%	reported latrines were gender segregated

Top two most reported methods of waste removal

Collected	93%
Communal bin	7%

Primary drinking water sources

88%	outdoor water point
12%	bottled water from the shop

Access to drinking water

24%	reported at least 24 consecutive hours without access to water in the month prior to the assessment
-----	---



Shelter

31% reported flooding in their shelter in the previous year

Top observed shelter type

Tent	100%
19%	of tents have secondary cover

Top reported needed basic items*

Heating fuel	51%
Fuel storage	48%
Light	27%

Top reported needed winter item*

Kerosene heater	95%
-----------------	-----

Electricity access

Average number of hours of electricity per day	6
--	---



Food Security

Reported access to food assistance

42%	reported having received Public Distribution System (PDS) assistance in the month prior to the assessment
99%	reported access to a market within walking distance

Top two food consumption coping strategies*

Buy less expensive food	7%
Borrow food	4%

*Respondents could select multiple responses
**Insufficient sample size; fewer than five respondents





IDP Camp Profile - Al Qasir

Anbar, Iraq
January 2018

Management agency: Government
Manager/Focal point: Abdulqader Rabie Yassin
Registration actor: Government

Summary

This profile provides an overview of conditions in Al Qasir camp. Primary data was collected through household surveys on 26/12/2017. Households were randomly sampled to a 95% confidence level and a 10% margin of error, based on population figures provided by CCCM. In some cases, additional information from camp managers has been used to support findings.

Camp Overview

of individuals: 13765
of households: 2651
Date opened: 8/15/2015
Occupied shelters: 2803
Planned shelters: 2877
Ongoing extension: no
Camp area: 914214m²

Demographics

55% male / 45% female

1% | Over 60 | 1%
19% | 18-59 | 19%
11% | 12-17 | 7%
13% | 6-11 | 8%
12% | 0-5 | 11%



Location Map

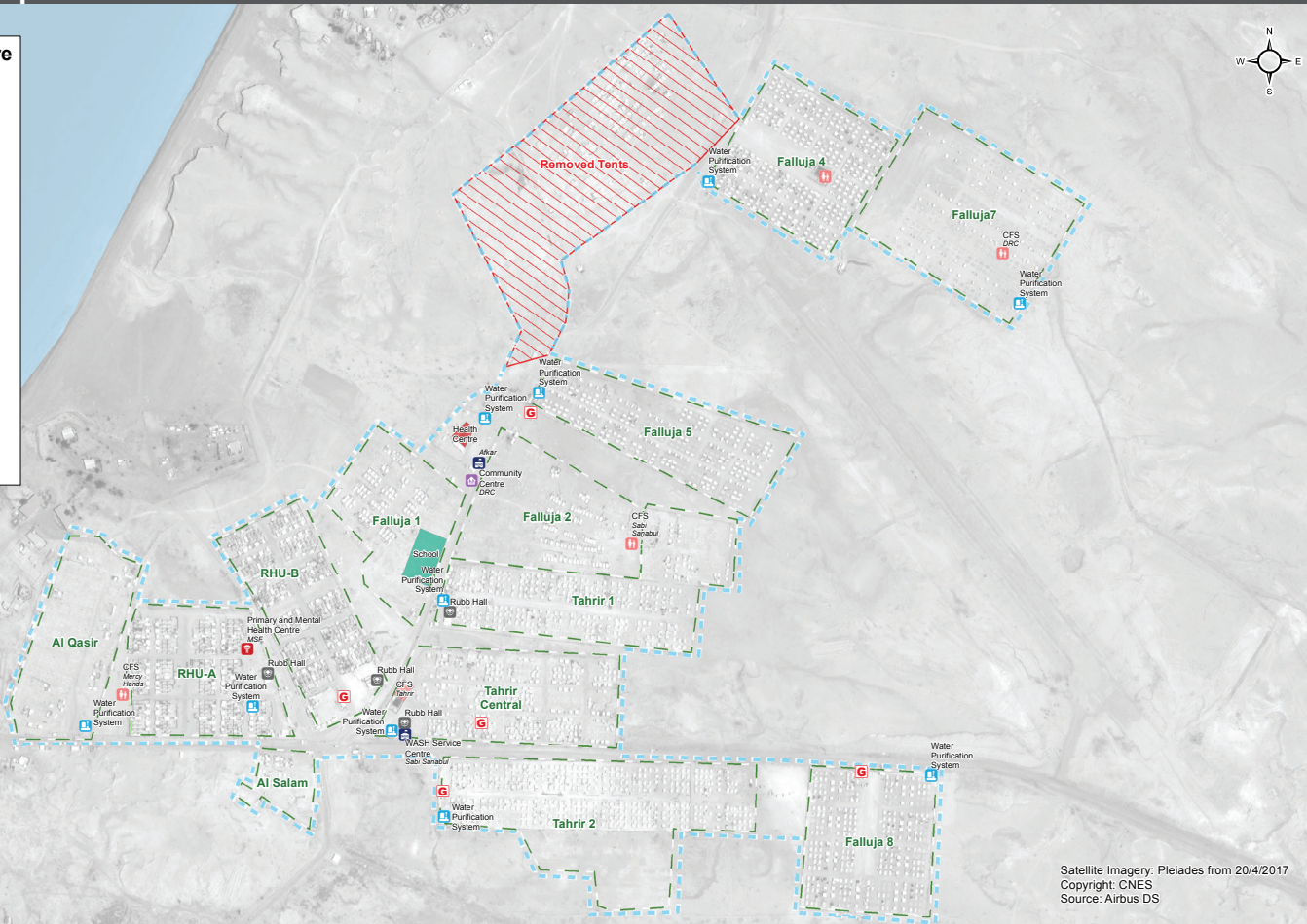


IDP Camp Map - Al Qasir

Lat. 33° 17' 24.314" N Long. 44° 6' 44.233" E

Camp Infrastructure

- Camp Delineation
- Sector
- Removed Tents Area
- Health
- Education
- Child Friendly Space
- Health
- NGO Office
- Child Friendly Space
- Community Centre
- Water Purification System
- Storage
- Generator
- Lake/River



Satellite Imagery: Pleiades from 20/4/2017
Copyright: CNES
Source: Airbus DS

Sectoral Minimum Standards

		Target	Previous Round	Current Round	Achievement
CCCM	Average open area per household	Min. 30m ²	284 m ²	323 m ²	●
Protection	% of IDPs registered on an individual basis (MODM/DDM)	100%	89%	86%	●
WASH	# of persons per latrine	Max. 20	33	18	●
	# of persons per shower	Max. 20	60	37	●
	Frequency of solid waste disposal	Min. weekly	Every month	Every week	●
Shelter	Average area covered per person	Min. 3.5m ²	3.1 m ²	3.7 m ²	●
	Average number of individuals per shelter	Max. 5	6	6	●
Food	% households accessed Family Food Parcel or equivalent in previous month	100%	n/a*	58%	●
Health	Health services available on-site or within walking distance	Yes	yes	yes	●
Education	% of children aged 6-11 attending formal school	100%	69%	57%	●
	% of children aged 12-17 attending formal school	100%	42%	43%	●

*Method of calculation for food distribution has changed from previous rounds

Targets based on minimum standards agreed with the CCCM Cluster, Iraq. Findings based on household-level data, enumerator field observations, and camp management documentation
● Minimum standard reached, ● 50-99% of minimum standard reached, ● Less than 50% of minimum standard reached or not at all





IDP Camp Profile - Al Qasir

Anbar, Iraq
January 2018



Protection

Vulnerable groups

Pregnant / lactating women	1%	
Chronically ill individual(s)	4%	■
Disabled individual(s)	0%	
Female headed households	12%	■

Intentions

33%	planned to move to a different location in next 3 months
5%	reported needing financial support to return and restart in order to return safely to their area of origin

Restrictions

100%	reported being able to leave the camp temporarily (e.g. to go to the market, for livelihood opportunities)
------	--

Documentation

6%	reported that one or more member is missing one or more documents
50%	reported that at least one of the members missing documents is an adult (18+)

Top three missing documents reported by those households*

ID card	67%
Citizenship certificate	33%
n/a	

Top two reasons for not attending education*

(of households with school-aged children not attending school)

Child is disinterested	19%
Unable to afford education	19%



Access to information

Top three information sources regarding area of origin*

From others who visited	54%	■
Media	20%	■
Personally visited	10%	■

Top three information needs*

Basic services	80%	■
Security situation	69%	■
Livelihood sources	58%	■



Livelihoods

30% reported not having an income source

Top three income sources*

Unskilled labour	22%	■
Humanitarian aid	18%	■
Self employed	12%	■

Top three reported livelihood coping strategies*

None	71%	■
Spent savings	16%	■
Take on debt	12%	■



Priority Needs

Top 3 reported priority needs*

Food	89%	■
Employment	59%	■
Education	41%	■



WASH

Latrines

85%	reported access to public or communal latrines. Of those:
92%	reported latrines were lockable from the inside
74%	reported latrines had functioning lighting
81%	reported latrines were gender segregated

Top two most reported methods of waste removal

Collected	94%	■
Burnt	6%	■

Primary drinking water sources

74%	outdoor water point
15%	bottled water from the shop

Access to drinking water

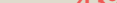
18%	reported at least 24 consecutive hours without access to water in the month prior to the assessment
-----	---



Shelter

37% reported flooding in their shelter in the previous year

Top observed shelter type

Tent **83%** 
43% of tents have secondary cover

Top reported needed basic items*

Heating fuel	33%	■
Fuel storage	33%	■
Winter clothes	17%	■

Top reported needed winter item*

Kerosene heater	95%	■
-----------------	-----	---

Electricity access

Average number of hours of electricity per day	18
--	----



Food Security

Reported access to food assistance

58%	reported having received Public Distribution System (PDS) assistance in the month prior to the assessment
98%	reported access to a market within walking distance

Top two food consumption coping strategies*

Buy less expensive food	8%	■
Reduce food intake for males	3%	■

*Respondents could select multiple responses

**Insufficient sample size; fewer than five respondents





IDP Camp Profile - Amriyat Al Fallujah

Anbar, Iraq
January 2018

Management agency: Government
Manager/Focal point: Hussein Hamid Ibdoy
Registration actor: Government

Summary

This profile provides an overview of conditions in Amriyat Al Fallujah camp. Primary data was collected through household surveys on 27/12/2017. Households were randomly sampled to a 95% confidence level and a 10% margin of error, based on population figures provided by CCCM. In some cases, additional information from camp managers has been used to support findings.

Camp Overview

of individuals: 26300
of households: 4804
Date opened: 10/15/2015
Occupied shelters: 4804
Planned shelters: 5000
Ongoing extension: no
Camp area: 2,021,305m²

Demographics

50% male / 50% female

1% | Over 60 | 1%
18% | 18-59 | 20%
7% | 12-17 | 8%
12% | 6-11 | 10%
12% | 0-5 | 11%

Location Map



IDP Camp Map - Amriyat Al Fallujah

Lat. 33° 8' 57.654" N Long. 43° 50' 59.582" E



Sectoral Minimum Standards

		Target	Previous Round	Current Round	Achievement
CCCM	Average open area per household	Min. 30m ²	200 m ²	383 m ²	●
Protection	% of IDPs registered on an individual basis (MODM/DDM)	100%	89%	89%	●
WASH	# of persons per latrine	Max. 20	20	28	●
	# of persons per shower	Max. 20	26	28	●
	Frequency of solid waste disposal	Min. weekly	Every month	Every week	●
Shelter	Average area covered per person	Min. 3.5m ²	3.7 m ²	3.7 m ²	●
	Average number of individuals per shelter	Max. 5	7	6	●
Food	% households accessed Family Food Parcel or equivalent in previous month	100%	n/a*	58%	●
Health	Health services available on-site or within walking distance	Yes	yes	yes	●
Education	% of children aged 6-11 attending formal school	100%	49%	64%	●
	% of children aged 12-17 attending formal school	100%	54%	63%	●

*Method of calculation for food distribution has changed from previous rounds

Targets based on minimum standards agreed with the CCCM Cluster, Iraq. Findings based on household-level data, enumerator field observations, and camp management documentation
● Minimum standard reached, ● 50-99% of minimum standard reached, ● Less than 50% of minimum standard reached or not at all





IDP Camp Profile - Amriyat Al Fallujah

Anbar, Iraq
January 2018



Protection

Vulnerable groups

Pregnant / lactating women	2%	
Chronically ill individual(s)	6%	■
Disabled individual(s)	1%	
Female headed households	17%	■

Intentions

48%	planned to move to a different location in next 3 months
6%	reported needing financial support to return and restart in order to return safely to their area of origin

Restrictions

100%	reported being able to leave the camp temporarily (e.g. to go to the market, for livelihood opportunities)
------	--

Documentation

2%	reported that one or more member is missing one or more documents
n/a**	reported that at least one of the members missing documents is an adult (18+)

Top three missing documents reported by those households*

n/a**
n/a**
n/a**

Top two reasons for not attending education*

(of households with school-aged children not attending school)

Unable to afford education	23%
Child is disinterested	8%



Access to information

Top three information sources regarding area of origin*

From others who visited	63%	■
Government	15%	■
Personally visited	5%	■

Top three information needs*

Basic services	84%	■
Livelihood sources	70%	■
Security situation	68%	■



Livelihoods

26% reported not having an income source

Top three income sources*

Unskilled labour	27%	■
Humanitarian aid	16%	■
Government aid	12%	■

Top three reported livelihood coping strategies*

None	66%	■
Spent savings	20%	■
Take on debt	15%	■



Priority Needs

Top 3 reported priority needs*

Food	92%	■
Employment	63%	■
Education	37%	■



WASH

Latrines

91%	reported access to public or communal latrines. Of those:
100%	reported latrines were lockable from the inside
90%	reported latrines had functioning lighting
99%	reported latrines were gender segregated

Top two most reported methods of waste removal

Collected	100%	■
n/a	n/a	

Primary drinking water sources

80%	outdoor water point
11%	bottled water from the shop

Access to drinking water

23%	reported at least 24 consecutive hours without access to water in the month prior to the assessment
-----	---



Shelter

35% reported flooding in their shelter in the previous year

Top observed shelter type

Tent	66%	<div></div>
	49%	of tents have secondary cover

Top reported needed basic items*

Heating fuel	36%	■
Fuel storage	33%	■
Blankets	17%	■

Top reported needed winter item*

Kerosene heater	89%	■
-----------------	-----	---

Electricity access

Average number of hours of electricity per day	21
--	----



Food Security

Reported access to food assistance

58%	reported having received Public Distribution System (PDS) assistance in the month prior to the assessment
98%	reported access to a market within walking distance

Top two food consumption coping strategies*

Buy less expensive food	12%	■
Reduce food intake for males	2%	

*Respondents could select multiple responses

**Insufficient sample size; fewer than five respondents





IDP Camp Profile - Bezabize Central

Anbar, Iraq
January 2018

Management agency: 7 Spikes Organization
Manager/Focal point: Radam Sabar Saleh
Registration actor: 7 spikes organization

Summary

This profile provides an overview of conditions in Bezabize Central camp. Primary data was collected through household surveys on 28/12/2017. Households were randomly sampled to a 95% confidence level and a 10% margin of error, based on population figures provided by CCCM. In some cases, additional information from camp managers has been used to support findings.

Camp Overview

of individuals: 7320
of households: 1220
Date opened: 9/7/2014
Occupied shelters: 1180
Planned shelters: 1180
Ongoing extension: no
Camp area: 183,896m²

Demographics

51% male / 49% female

1% | Over 60 | 1%
17% | 18-59 | 17%
11% | 12-17 | 8%
10% | 6-11 | 10%
13% | 0-5 | 13%



Location Map



IDP Camp Map - Bezabize Central

Lat. 33° 8' 18.9348" N Long. 44° 0' 42.5016" E

Satellite Imagery: WorldView-2 from 4/2/2017 Copyright: DigitalGlobe, Inc.
Source: US Department of State, Humanitarian Information Unit, NextView License



Sectoral Minimum Standards

		Target	Previous Round	Current Round	Achievement
CCCM	Average open area per household	Min. 30m ²	159 m ²	129 m ²	●
Protection	% of IDPs registered on an individual basis (MODM/DDM)	100%	91%	89%	●
WASH	# of persons per latrine	Max. 20	32	35	●
	# of persons per shower	Max. 20	49	81	●
	Frequency of solid waste disposal	Min. weekly	Every month	Every week	●
Shelter	Average area covered per person	Min. 3.5m ²	3.1 m ²	3.1 m ²	●
	Average number of individuals per shelter	Max. 5	7	6	●
Food	% households accessed Family Food Parcel or equivalent in previous month	100%	n/a*	67%	●
Health	Health services available on-site or within walking distance	Yes	yes	yes	●
Education	% of children aged 6-11 attending formal school	100%	51%	57%	●
	% of children aged 12-17 attending formal school	100%	47%	46%	●

*Method of calculation for food distribution has changed from previous rounds

Targets based on minimum standards agreed with the CCCM Cluster, Iraq. Findings based on household-level data, enumerator field observations, and camp management documentation
● Minimum standard reached, ● 50-99% of minimum standard reached, ● Less than 50% of minimum standard reached or not at all





IDP Camp Profile - Bezaize Central

Anbar, Iraq
January 2018



Protection

Vulnerable groups

Pregnant / lactating women	2%	<div></div>
Chronically ill individual(s)	7%	<div></div>
Disabled individual(s)	0%	<div></div>
Female headed households	21%	<div></div>

Intentions

46%	planned to move to a different location in next 3 months
7%	reported needing financial support to return and restart in order to return safely to their area of origin

Restrictions

100%	reported being able to leave the camp temporarily (e.g. to go to the market, for livelihood opportunities)
------	--

Documentation

3%	reported that one or more member is missing one or more documents
n/a**	reported that at least one of the members missing documents is an adult (18+)

Top three missing documents reported by those households*

n/a**
n/a**
n/a**

Top two reasons for not attending education*

(of households with school-aged children not attending school)

Unable to afford education	11%
Missed too much to make up	11%



Access to information

Top three information sources regarding area of origin*

From others who visited	62%	<div></div>
Government	15%	<div></div>
Others who have not visited	8%	<div></div>

Top three information needs*

Basic services	90%	<div></div>
Livelihood sources	76%	<div></div>
Security situation	58%	<div></div>



Livelihoods

22% reported not having an income source

Top three income sources*

Unskilled labour	28%	<div></div>
Humanitarian aid	19%	<div></div>
Government aid	15%	<div></div>

Top three reported livelihood coping strategies*

None	70%	<div></div>
Take on debt	19%	<div></div>
Spent savings	18%	<div></div>



Priority Needs

Top 3 reported priority needs*

Food	97%	<div></div>
Employment	58%	<div></div>
Education	43%	<div></div>



WASH

Latrines

100%	reported access to public or communal latrines. Of those:
97%	reported latrines were lockable from the inside
86%	reported latrines had functioning lighting
83%	reported latrines were gender segregated

Top two most reported methods of waste removal

Collected	100%	<div></div>
n/a	n/a	

Primary drinking water sources

73%	outdoor water point
27%	bottled water from the shop

Access to drinking water

9%	reported at least 24 consecutive hours without access to water in the month prior to the assessment
----	---



Shelter

41% reported flooding in their shelter in the previous year

Top observed shelter type

Tent	100%	<div></div>
54%	of tents have secondary cover	

Top reported needed basic items*

Heating fuel	33%	<div></div>
Fuel storage	33%	<div></div>
Blankets	14%	<div></div>

Top reported needed winter item*

Kerosene heater	95%	<div></div>
-----------------	-----	-------------

Electricity access

Average number of hours of electricity per day	21
--	----



Food Security

Reported access to food assistance

67%	reported having received Public Distribution System (PDS) assistance in the month prior to the assessment
99%	reported access to a market within walking distance

Top two food consumption coping strategies*

Buy less expensive food	13%	<div></div>
Reduce food intake for males	3%	<div></div>

*Respondents could select multiple responses
**Insufficient sample size; fewer than five respondents





IDP Camp Profile - Kilo 18

Anbar, Iraq
January 2018

Management agency: Government
Manager/Focal point: Jabbar Hamid Sayer
Registration actor: other

Summary

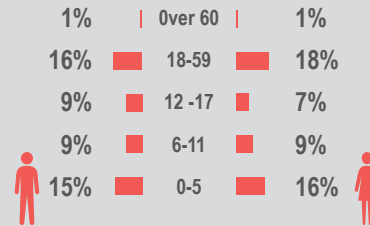
This profile provides an overview of conditions in Kilo 18 camp. Primary data was collected through household surveys on 7/1/2018. Households were randomly sampled to a 95% confidence level and a 10% margin of error, based on population figures provided by CCCM. In some cases, additional information from camp managers has been used to support findings.

Camp Overview

of individuals: 3773
of households: 822
Date opened: 2/11/2016
Occupied shelters: 850
Planned shelters: 1089
Ongoing extension: no
Camp area: 431,697m²

Demographics

50% male / 50% female



Location Map



IDP Camp Map - Kilo 18

Lat. 33° 23' 55.6" N Long. 43° 8' 13.65" E



Sectoral Minimum Standards

		Target	Previous Round	Current Round	Achievement
CCCM	Average open area per household	Min. 30m ²	n/a	487 m ²	●
Protection	% of IDPs registered on an individual basis (MODM/DDM)	100%	93%	94%	●
WASH	# of persons per latrine	Max. 20	29	26	●
	# of persons per shower	Max. 20	72	32	●
	Frequency of solid waste disposal	Min. weekly	Every week	Every week	●
Shelter	Average area covered per person	Min. 3.5m ²	3.7 m ²	3.7 m ²	●
	Average number of individuals per shelter	Max. 5	7	6	●
Food	% households accessed Family Food Parcel or equivalent in previous month	100%	n/a*	59%	●
Health	Health services available on-site or within walking distance	Yes	yes	yes	●
Education	% of children aged 6-11 attending formal school	100%	32%	82%	●
	% of children aged 12-17 attending formal school	100%	30%	49%	●

*Method of calculation for food distribution has changed from previous rounds

Targets based on minimum standards agreed with the CCCM Cluster, Iraq. Findings based on household-level data, enumerator field observations, and camp management documentation
● Minimum standard reached, ● 50-99% of minimum standard reached, ● Less than 50% of minimum standard reached or not at all





IDP Camp Profile - Kilo 18

Anbar, Iraq
January 2018



Protection

Vulnerable groups

Pregnant / lactating women	2%	
Chronically ill individual(s)	4%	
Disabled individual(s)	0%	
Female headed households	19%	

Intentions

65%	planned to move to a different location in next 3 months
12%	reported needing financial support to return and restart in order to return safely to their area of origin

Restrictions

100%	reported being able to leave the camp temporarily (e.g. to go to the market, for livelihood opportunities)
------	--

Documentation

0%	reported that one or more member is missing one or more documents
n/a	reported that at least one of the members missing documents is an adult (18+)

Top three missing documents reported by those households*

n/a**
n/a**
n/a**

Top two reasons for not attending education*

(of households with school-aged children not attending school)

Unable to afford education	17%
Missed too much to make up	17%



Access to information

Top three information sources regarding area of origin*

From others who visited	67%	
Media	16%	
Personally visited	7%	

Top three information needs*

Basic services	83%	
Livelihood sources	79%	
Security situation	70%	



Livelihoods

30% reported not having an income source

Top three income sources*

Unskilled labour	23%	
Humanitarian aid	16%	
Self employed	15%	

Top three reported livelihood coping strategies*

None	56%	
Spent savings	25%	
Take on debt	17%	



Priority Needs

Top 3 reported priority needs*

Food	95%	
Employment	57%	
Education	41%	



WASH

Latrines

100%	reported access to public or communal latrines. Of those:
99%	reported latrines were lockable from the inside
85%	reported latrines had functioning lighting
99%	reported latrines were gender segregated

Top two most reported methods of waste removal

Collected	100%	
n/a	n/a	

Primary drinking water sources

91%	outdoor water point
9%	indoor water point

Access to drinking water

10%	reported at least 24 consecutive hours without access to water in the month prior to the assessment
-----	---



Shelter

66% reported flooding in their shelter in the previous year

Top observed shelter type

Tent	100%	<div></div>
	56%	of tents have secondary cover

Top reported needed basic items*

Heating fuel	25%	
Fuel storage	25%	
Mattresses	10%	

Top reported needed winter item*

Kerosene heater	87%	
-----------------	-----	--

Electricity access

Average number of hours of electricity per day	18
--	----



Food Security

Reported access to food assistance

59%	reported having received Public Distribution System (PDS) assistance in the month prior to the assessment
99%	reported access to a market within walking distance

Top two food consumption coping strategies*

Buy less expensive food	9%	
Borrow food	2%	

*Respondents could select multiple responses
**Insufficient sample size; fewer than five respondents

