

Kabasa IDP Settlement Profile

Doolow District, Gedo Region, Somalia

Somalia Displacement Crisis
May 2017

Summary

This factsheet provides an overview of humanitarian needs in Kabasa IDP settlement, in Doolow district. The findings presented here are part of an assessment with the objective to support multi-sectoral and area-based approaches to intervention in IDP settlements in Somalia.

Primary data was collected through household surveys, key informant interviews and facility mapping from 8 to 20 May 2017. Households were randomly sampled to a 95% confidence and 10% margin of error. Population figures were provided through settlement key informant interviews.

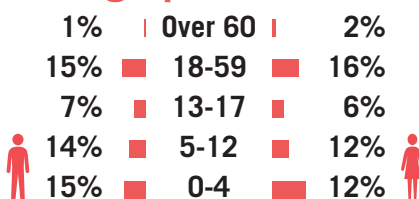
179 households and 8 key informants were interviewed in Kabasa.

Overview

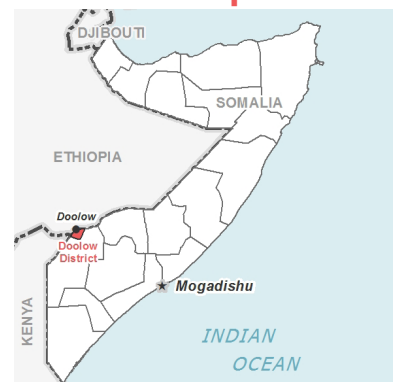
Estimated Population: 27,000

Estimated Number of HHs: 4,500

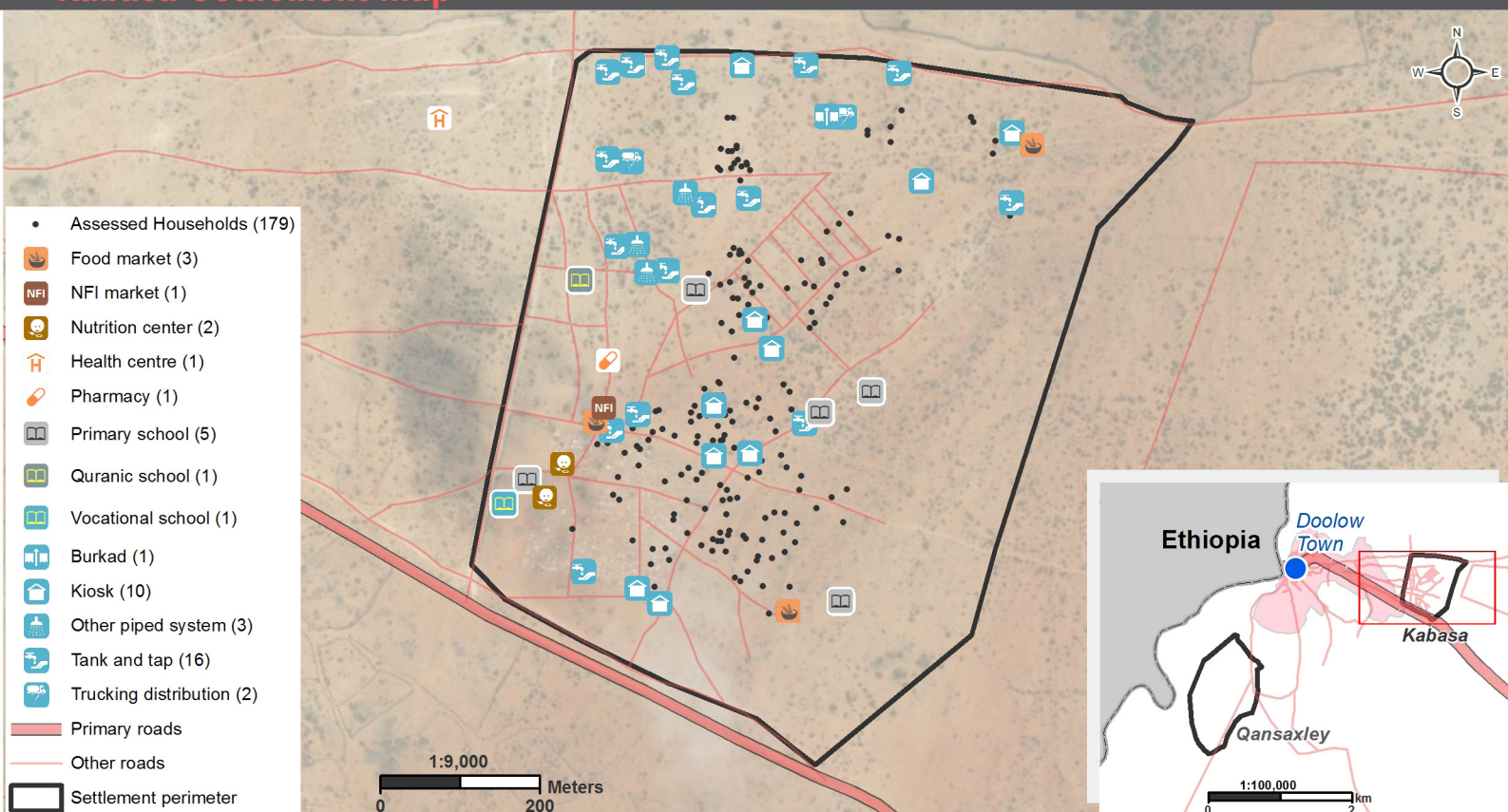
Demographics



Location Map



Kabasa Settlement Map



Sectoral Overview

		Target	Current Situation	
Education	% of children aged 5-12 that attend school	100%	42%	●
	% of children aged 13-17 that attend school	100%	31%	●
	% of schools that meet minimum teacher to student criteria of 1 teacher to every 45 students	100%	43%	●
Food	% of HHs reporting an acceptable food consumption score	100%	91%	●
Shelter/NFIs	% of HHs reporting any damage to shelter	0%	32%	●
Health	% of HHs that are able to access health facilities on site or within walking distance	100%	60%	●
CCCM	Average open area per HH	min 30m ²	0m ²	●
Water & Sanitation	% of HHs within 500m of a potable water point	100%	100%	●
	% of HHs within 50m of a functioning latrine	100%	88%	●
Protection	% of HHs that have reported to be registered by a legitimate agency	100%	78%	●
	% of HHs with land tenure rights / arrangements	100%	25%	●

1) Targets are based on minimum Sphere or UNHCR standards. ● Target reached, ● Target more than 50% reached, ● Target less than 50% or not at all reached.



Funded by
European Union
Humanitarian Aid

For more information on this profile please contact:
REACH Initiative: [somalia@reach-initiative.org]
<http://www.reachresourcecentre.info/countries/somalia>

REACH Informing
more effective
humanitarian action

Displacement

% of population profile	%	# of HHs
IDP	99%	177
Returnee	1%	2

Primary pull factors for arriving in location:¹

IDP's		
1	Aid availability	93%
2	No conflict	84%
3	Work and income	35%

Primary push factors for leaving area of origin:¹

IDP's		
1	Drought	96%
2	Conflict	46%
3	No livelihoods	41%

Data on push and pull factors for returnee populations is not presented due to the small representation in the settlement.

Relationship with the host communities:²

Very Good	28%
Good	70%
Fair	2%
Bad	0%

Note:
1) Households could choose multiple answers.
2) As reported by IDP households.

Shelter

% of reported shelter types:

CGI sheeting	51%
Buil	7%
Tent	1%

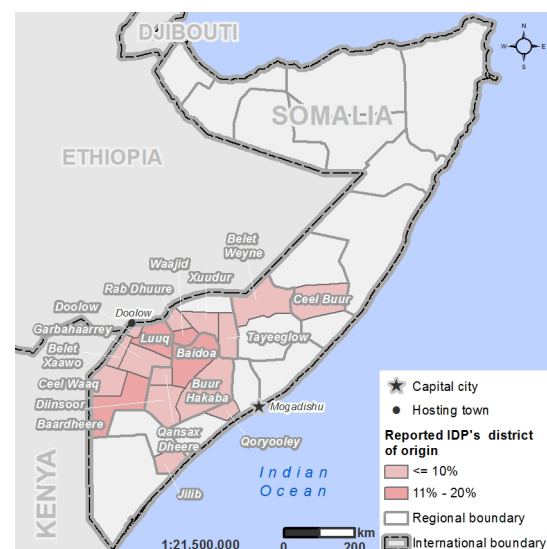
% of reported shelter categories:

Semi-permanent	46%
Temporary	37%
Permanent	14%
Emergency	3%

% of reported primary shelter materials:

Floor:	Earth	93%
Main structure:	Wood	82%
Walls & roof:	Iron sheet	51%

Areas of Origin

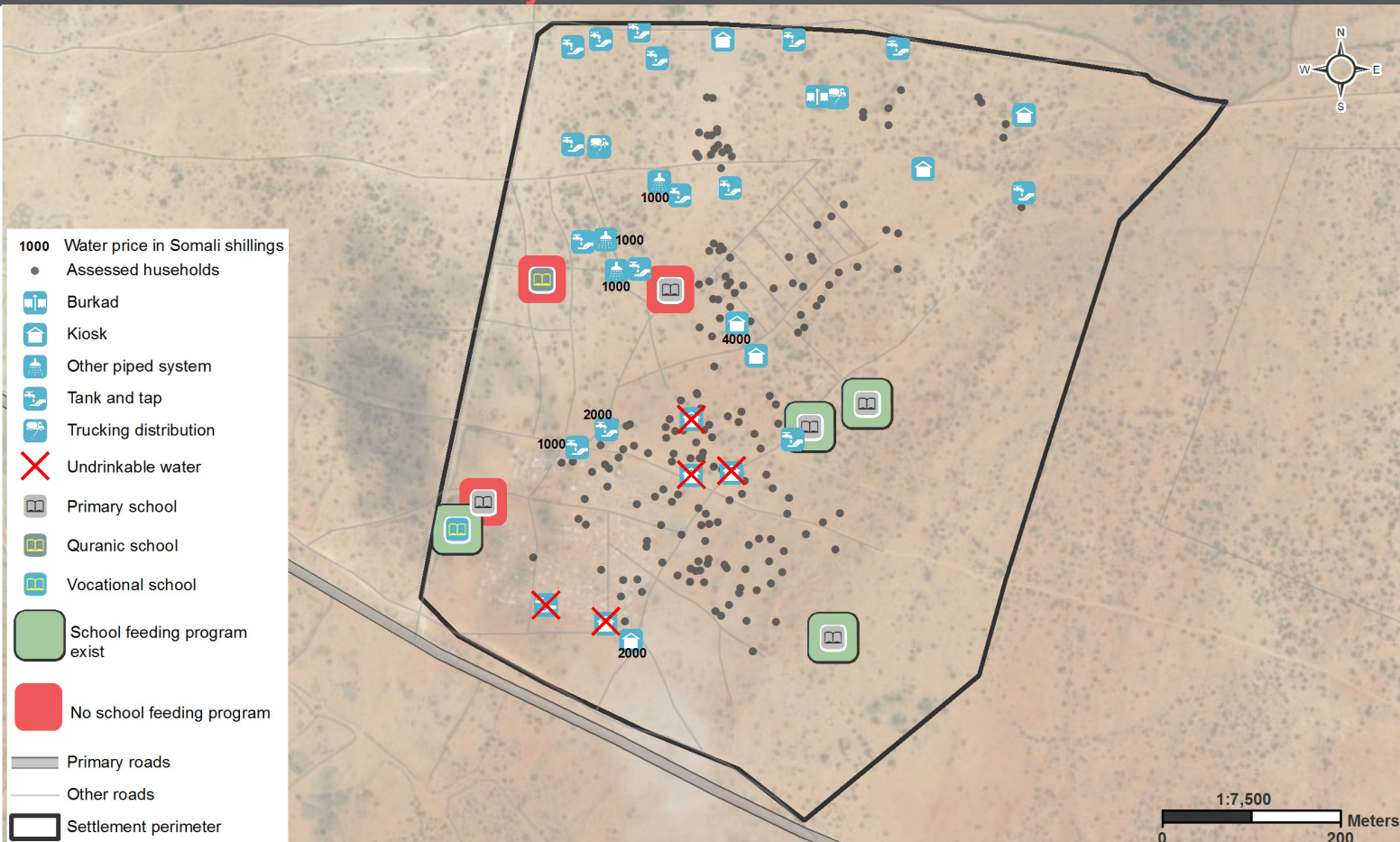


Priority Concerns

Top 3 priority needs reported by households were:¹

Food	81%
Water	66%
Shelter	50%

Water and School Accessibility



Water & Sanitation

The 3 most common water sources for drinking water as reported by households:¹

1	River	63%
2	Tank and tap	26%
3	Piped system	13%

% of reported latrine types used by households:

Communal	88%
Private	3%
Open defecation	9%

Communication

3 most trusted information sources reported by HHs:¹

1	Community leader	67%
2	Religious leader	51%
3	Friends and family	47%

Food Security

% of households reporting a change in food spending since previous month:

Increase	18%
Decrease	5%
No change	77%

Average food spending per household of six members for one week: **21 USD**.
Food Minimum Expenditure Basket (MEB) for Gedo in May was **100 USD**.

Health

Health facilities available within 5 km of the assessed settlement:

Primary healthcare unit	1
Health centre	1
Pharmacy	1

Livelihood

Top 3 primary livelihood sources in the past year:

1	Day labour	79%
2	Community support	7%
3	Subsistence farming	5%

Education

Schools available within 1km of the assessed settlement:

Primary	5
Vocational	1
Quranic	1

Average reported school dropout rate during the past school year as reported by school representative:

Boys	18%
Girls	18%

Vulnerabilities

% of households reporting the following members:

Pregnant/lactating women	40%
Disabled or chronically ill	3%
Sick children	11%
Separated children	7%

Note: 1) Households could choose multiple answers.

Latrine Accessibility



Note Maps: Latrines and water points were mapped during a REACH assessment in April 2017. The number of shelters within and outside a 50m buffer of the latrines was calculated using spatial analysis. The shelters were mapped by UNOSAT using satellite image analysis.