



IDP Camp Profile - Baharka

Erbil, Iraq
August 2016

Management agency: BCF
Manager/Focal point: Bzhar Lateef
Phone number: 7511720428
Email: n/a
Registration actor: Camp management

Summary

This profile provides an overview of conditions in Baharka camp. Primary data was collected through household surveys on 18-08-16. Households were randomly sampled to a 95% confidence and 10% margin of error, based on population figures provided by CCCM. In some cases, additional information from camp managers has been used to support findings. Round V of data collection was in April 2016.

Camp Overview

of individuals: 3923
of households: 840
Date opened: 18-08-14
Occupied number: 996
Ongoing extension: No
Planned capacity: 1001
Camp area: 305,707

Demographics

49% male / 51% female

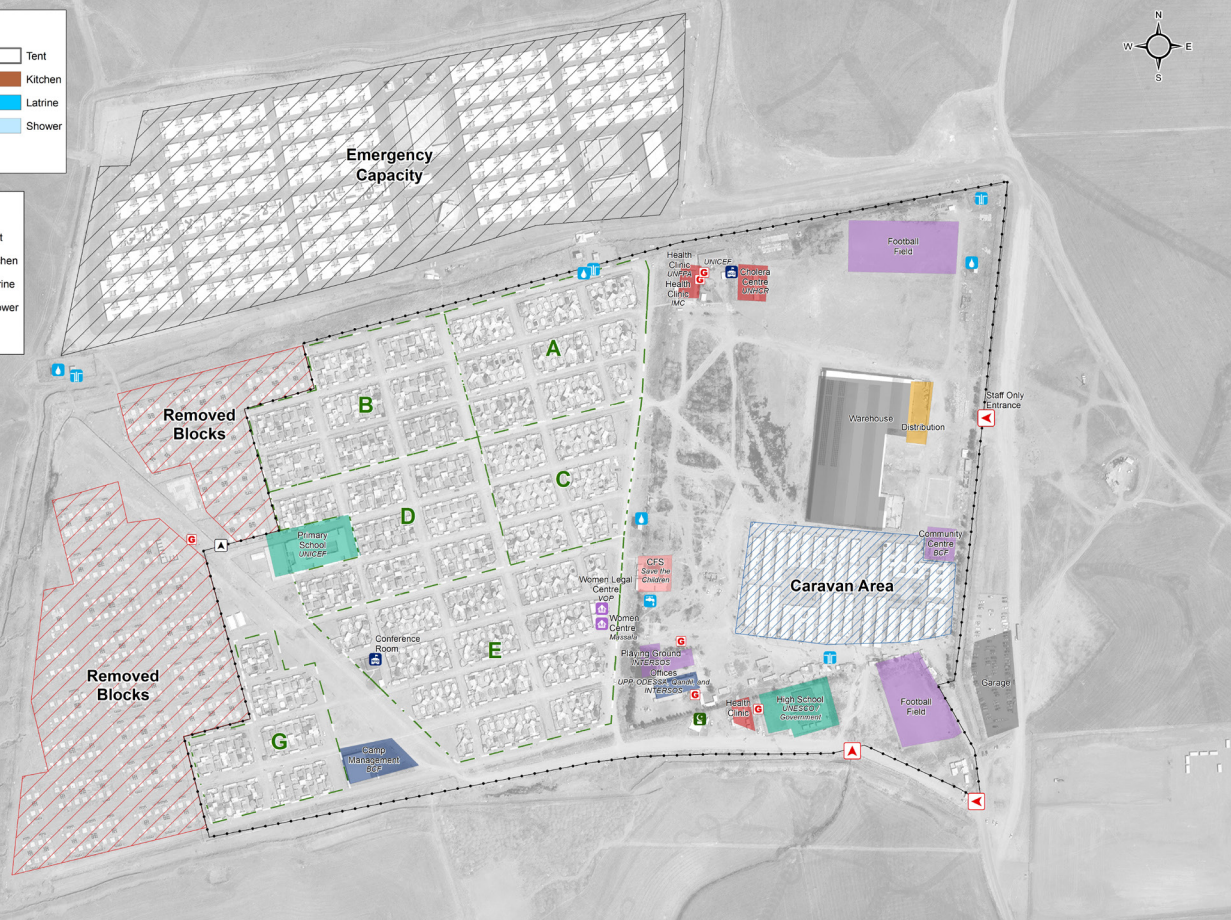
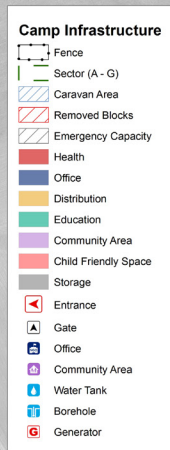
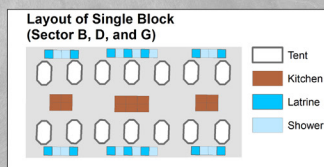
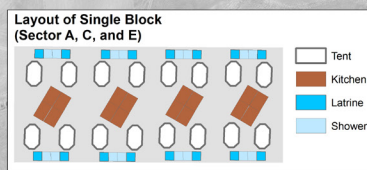
1%	Over 60	1%
19%	18-59	18%
8%	12-17	8%
12%	6-11	13%
9%	0-5	11%

Location Map



IDP Camp Map - Baharka

Lat. 36° 17' 40.022" N Long. 43° 59' 39.655" E



Sectoral Minimum Standards

		Target	Previous Round	Current Round	Achievement
Education	% of children aged 6-11 attending formal school	100%	65%	79%	●
	% of children aged 12-17 attending formal school	100%	45%	52%	●
Food	% of households accessed Family Food Parcel or equivalent in the past month	100%	97%	92%	●
Health	Health services are available on-site or within walking distance	Yes	Yes	Yes	●
CCCM	Average open area per household	min. 30m ²	272m ²	290m ²	●
Protection	% of IDPs registered on an individual basis (MODM/DDM)	100%	94%	100%	●
	% of households accessed shelter assistance since arrival at the camp	100%	75%	53%	●
	Average covered area per person	min. 3.5m ²	5.4m ²	5.4m ²	●
WASH	Average number of individuals per shelter	max.5	4	4	●
	# of persons per latrine	max. 20	2	4	●
	# of persons per shower	max. 20	2	4	●
	Frequency of solid waste disposal at least weekly	min. weekly	Yes	Yes	●

*GPS tracking of camp infrastructure was not possible this round due to restrictions from authorities. Area calculations subsequently could not be determined.
Targets based on minimum standards agreed with the CCCM Cluster, Iraq. Findings based on household-level data, enumerator field observations, and camp management documentation
● Minimum standard reached, ● More than 50% minimum standard reached, ● Less than 50% of minimum standard reached or not at all





IDP Camp Profile - Baharka

Erbil, Iraq
August 2016

Management agency: BCF
Manager/Focal point: Bzhar Lateef
Phone number: 7511720428
Email: n/a
Registration actor: Camp management

Shelter

Top three observed shelter types*

Tent with brick walls	71%	<div></div>
Caravan	14%	<div></div>
Semi-Permanent structure	11%	<div></div>

*Households were asked to select all shelter typologies within household.

Winterisation and NFI items

68%	reported a second fly sheet
70%	reported access to a heater
76%	reported at least one blanket per person
66%	reported at least one mattress per person
1.5	average number of carpets
20%	reported shelter provides warmth in winter

Hazards

1%	reported exposed electrical cables at site
----	--

Shelter Improvement

57%	reported making own improvements to their shelter
-----	---

Community Organisation

IDP committees

99%	reported awareness of IDP committee(s)
-----	--

Complaints mechanism

98%	reported awareness of complaints mechanism
-----	--

Protection

Family Separation

0%	reported hosting unaccompanied or separated minors
3%	reported that other family members intended to join them

Vulnerable groups

Pregnant / lactating women	18%	<div></div>
Chronically ill individual(s)	5%	<div></div>
Disabled individual(s)	3%	<div></div>
Female headed households	8%	<div></div>

Intentions

1%	planned to move to a different location in next 3 months
----	--

Restrictions

21%	reported entry or exit restrictions during daylight hours
-----	---

Food Security and Coping Strategies

Reported access to food assistance

92%	accessed food assistance in past month
40%	received Public Distribution System (PDS) in past month

Top three food consumption coping strategies

Cheaper	77%	<div></div>
Borrowed	35%	<div></div>
Less meals	25%	<div></div>

Top three reported livelihood coping strategies

Debt	41%	<div></div>
Spent savings	39%	<div></div>
Support from Family	27%	<div></div>

WASH

Latrines and showers

0%	reported public or communal latrines
n/a	public/communal latrines lockable from the inside
n/a	public/communal latrines with functioning lighting

Top three reported methods of waste removal

Communal bin	100%	<div></div>
n/a	n/a	
n/a	n/a	

Reported drinking water sources

0%	connection inside the home to collective water storage
100%	connection inside the home to private water storage
0%	communal water tap outside the shelter

Access to water

12%	reported 24 consecutive hours without access to water in the past month
-----	---

Household Income

4%	reported as being economically inactive
----	---

Top three income sources*:

Humanitarian Aid	30%	<div></div>
Self-employed	14%	<div></div>
Gifts	14%	<div></div>

*Households were asked to select all income sources within household.

