



IDP Camp Profile - Khazer M1

Ninewa, Iraq
January 2017

Management agency: BCF
Manager/Focal point: Badreddin Najmeddin Othman
Phone number: 7507373638
Email: badradin.harky@yahoo.com
Registration actor: BCF

Summary

This profile provides an overview of conditions in Khazer M1 camp. Primary data was collected through household surveys on 9-01-2017. This was the first round of data collection for this camp. Households were randomly sampled to a 95% confidence and 10% margin of error, based on population figures provided by CCCM. In some cases, additional information from camp managers has been used to support findings.

Camp Overview

of individuals: 30,000
of households: 6,250
Date opened: 24-10-2016
Occupied number: 5,960
Ongoing extension: no
Planned capacity: 6,310
Camp area: 1,306,278m²

Demographics

52% male / 48% female

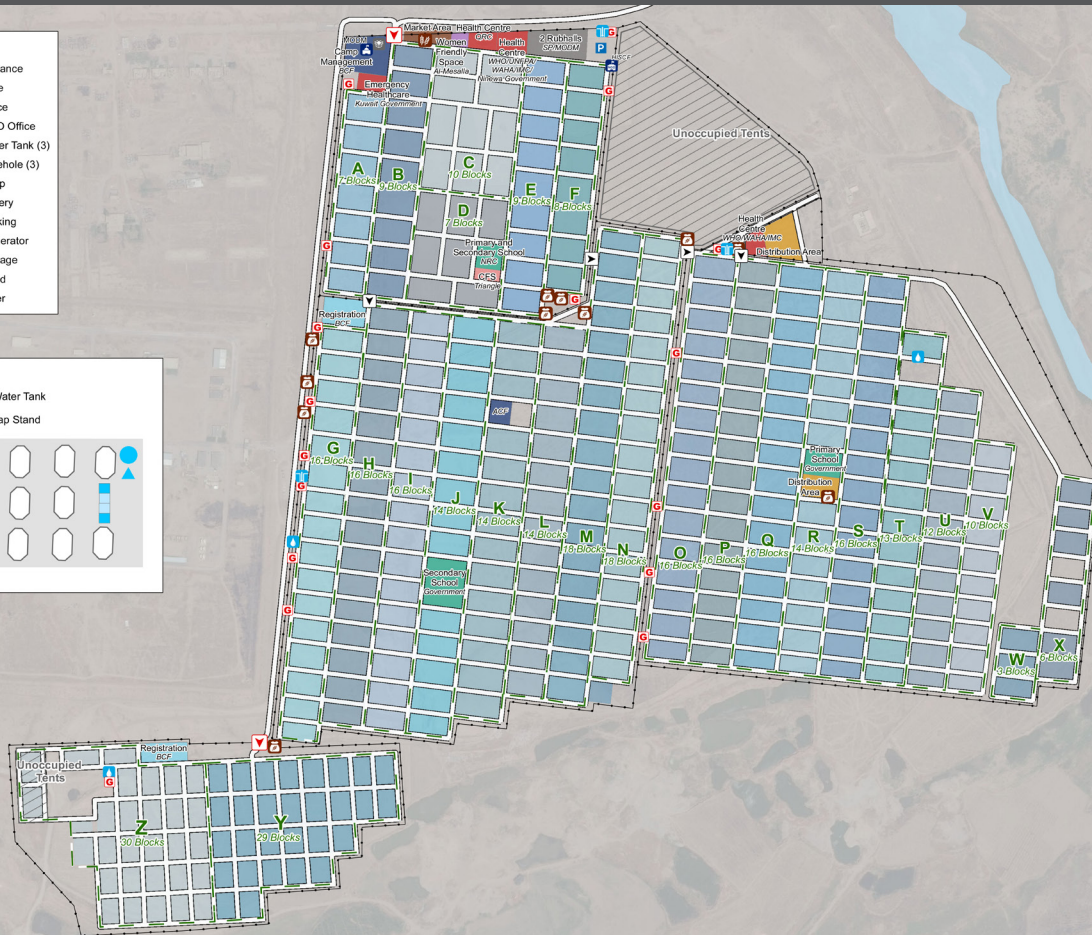
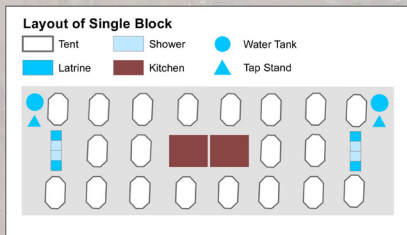
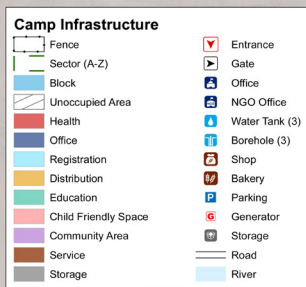
2% | Over 60 | 2%
18% | 18-59 | 20%
11% | 12-17 | 8%
10% | 6-11 | 9%
10% | 0-5 | 9%

Location Map



IDP Camp Map - Khazer M1

Lat. 36° 18' 32.324" N Long. 43° 32' 19.047" E



Sectoral Minimum Standards

		Target	Previous Round	Current Round	Achievement
Education	% of children aged 6-11 attending formal school	100%	85%	2%	●
	% of children aged 12-17 attending formal school	100%	n/a	1%	●
Food	% of households accessed Family Food Parcel or equivalent in the past month	100%	n/a	97%	●
Health	Health services are available on-site or within walking distance	Yes	n/a	Yes	●
CCCM	Average open area per household	min. 30m ²	n/a	420m ²	●
Protection	% of IDPs registered on an individual basis (MODM/DDM)	100%	n/a	89%	●
Shelter	Average covered area per person	min. 3.5m ²	n/a	4.6m ²	●
	Average number of individuals per shelter	max.5	n/a	5	●
WASH	# of persons per latrine	max. 20	n/a	4	●
	# of persons per shower	max. 20	7	4	●
	Frequency of solid waste disposal at least weekly	Min. weekly	n/a	Yes	●

Targets based on minimum standards agreed with the CCCM Cluster, Iraq. Findings based on household-level data, enumerator field observations, and camp management documentation
● Minimum standard reached, ● More than 50% minimum standard reached, ● Less than 50% of minimum standard reached or not at all





IDP Camp Profile - Khazer M1

Ninewa, Iraq
January 2017

Management agency: BCF
Manager/Focal point: Badreddin Najmeddin Othman
Phone number: 7507373638
Email: badradin.harky@yahoo.com
Registration actor: BCF

Shelter

Top observed shelter type

Tent 100%

Top reported needed shelter items

Tarpaulin 98%

Sun shading net 52%

Rope 50%

Top reported needed basic items

Blanket 82%

Cooker 77%

Mattresses 69%

Top reported needed winter item

Kerosene heater 46%

Top reported needed summer item

Rechargeable fan 82%

Food Security

Reported access to food assistance

97% accessed food assistance in past month

18% received Public Distribution System (PDS) in past month

Top three food consumption coping strategies

Cheaper 38%

Less meals 30%

Smaller meals 22%

WASH

Latrines and showers

99% reported public or communal latrines

76% public/communal latrines lockable from the inside

0% public/communal latrines with functioning lighting

Top three reported methods of waste removal

Communal bin 100%

n/a n/a

n/a n/a

Reported drinking water sources

0% connection inside the home to collective water storage

0% connection inside the home to private water storage

60% communal water tap outside the shelter

Access to water

73% reported 24 consecutive hours without access to water in the past month

Community Organisation

IDP committees

95% reported awareness of IDP committee(s)

Complaints mechanism

29% made a complaint about conditions or assistance

Protection

Family Separation

0% reported hosting unaccompanied or separated minors

5% reported that other family members intended to join them

Vulnerable groups

Pregnant / lactating women 9%

Chronically ill individual(s) 8%

Disabled individual(s) 6%

Female headed households 13%

Intentions

48% planned to move to a different location in next 3 months

Restrictions

2% reported being able to leave the camp temporarily (e.g. to go to the market, for livelihood opportunities)

Livelihoods

63% reported as being economically inactive

Top three income sources*:

No livelihood 63%

Gifts 12%

Pension 8%

*Households were asked to select all income sources within household.

Top three reported livelihood coping strategies

Sold assistance 44%

Support from family 24%

Selling assets 24%

