

# Somalia - Luuq

## Bardheere - Settlement Facilities (August 2014)

For Humanitarian Relief Purposes Only  
Production date : 19 September 2014


### Schools


 Primary school

 Adults

### Water points

 Other Piped System


 Protected Well-without Hand Pump


 Tank and Tap

 Water Kiosk


 Water Trucking Distribution Point


### Latrine


 Household latrine

 Communal latrine

### Facilities


 Community centre


 Garbage collection point

 Health Facility

 Kiosk

 Market

 Mosque

 Assessed IDP settlement

■ Shelter (UNOSAT analysis June 2014)

Data sources:

Facilities and IDP sections: REACH assessment

Shelter Points: UNOSAT

Admin level: OCHA COD

Imagery Date (1): 14 June 2014

WorldView-2/DigitalGlobe

Coordinate System: GCS WGS 1984

File: REACH\_SOM\_Map\_SomaliaDisplacementCrisis\_Luuq\_Bardheere\_Facilities\_06Nov2014\_A3

Contact : reach.mapping@impact-initiatives.org

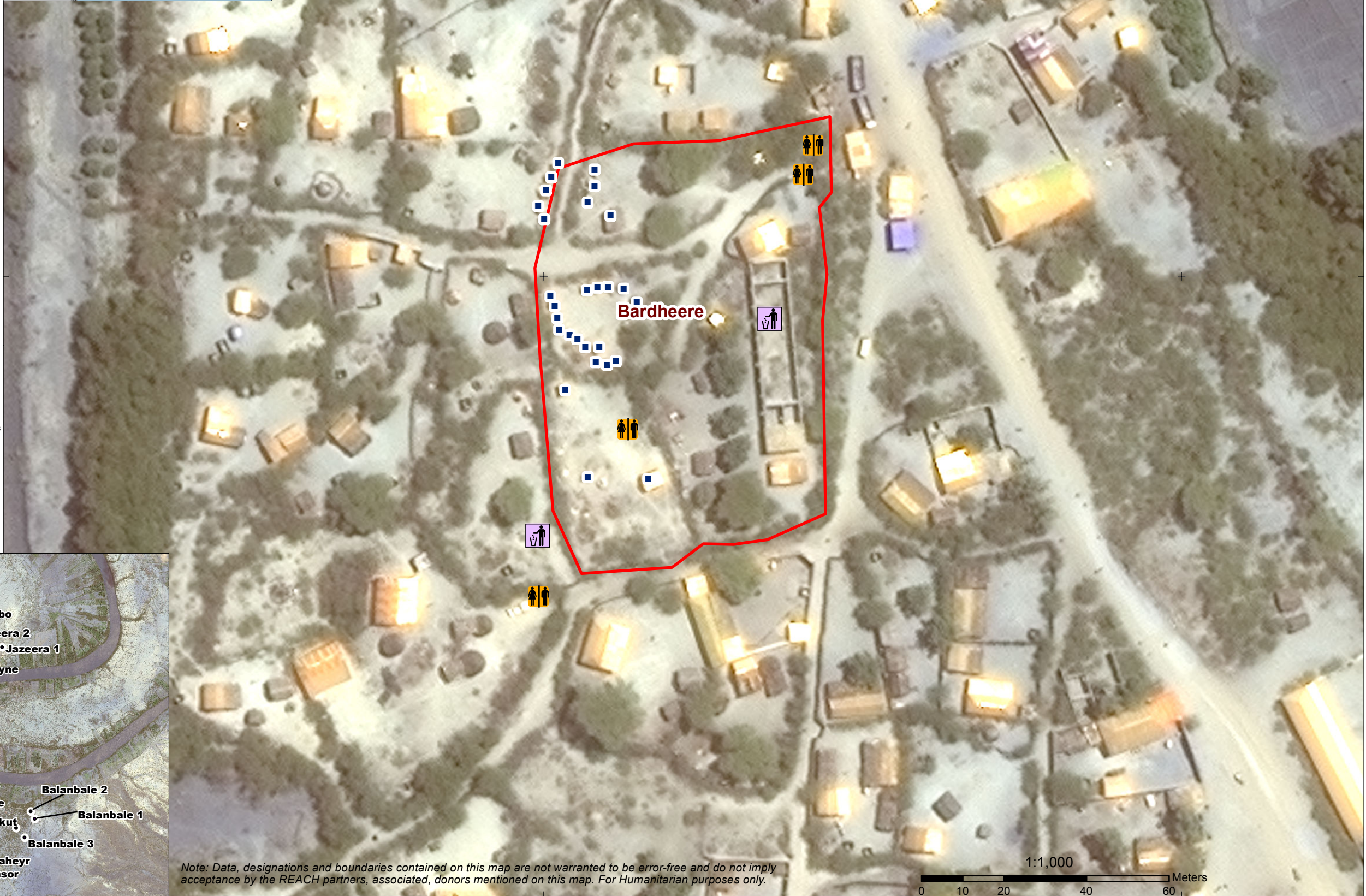
Funded by



Humanitarian Aid  
and Civil Protection



**USAID**  
FROM THE AMERICAN PEOPLE



Note: Data, designations and boundaries contained on this map are not warranted to be error-free and do not imply acceptance by the REACH partners, associated, donors mentioned on this map. For Humanitarian purposes only.

1:1,000  
0 10 20 40 60 Meters

3°47'25"N