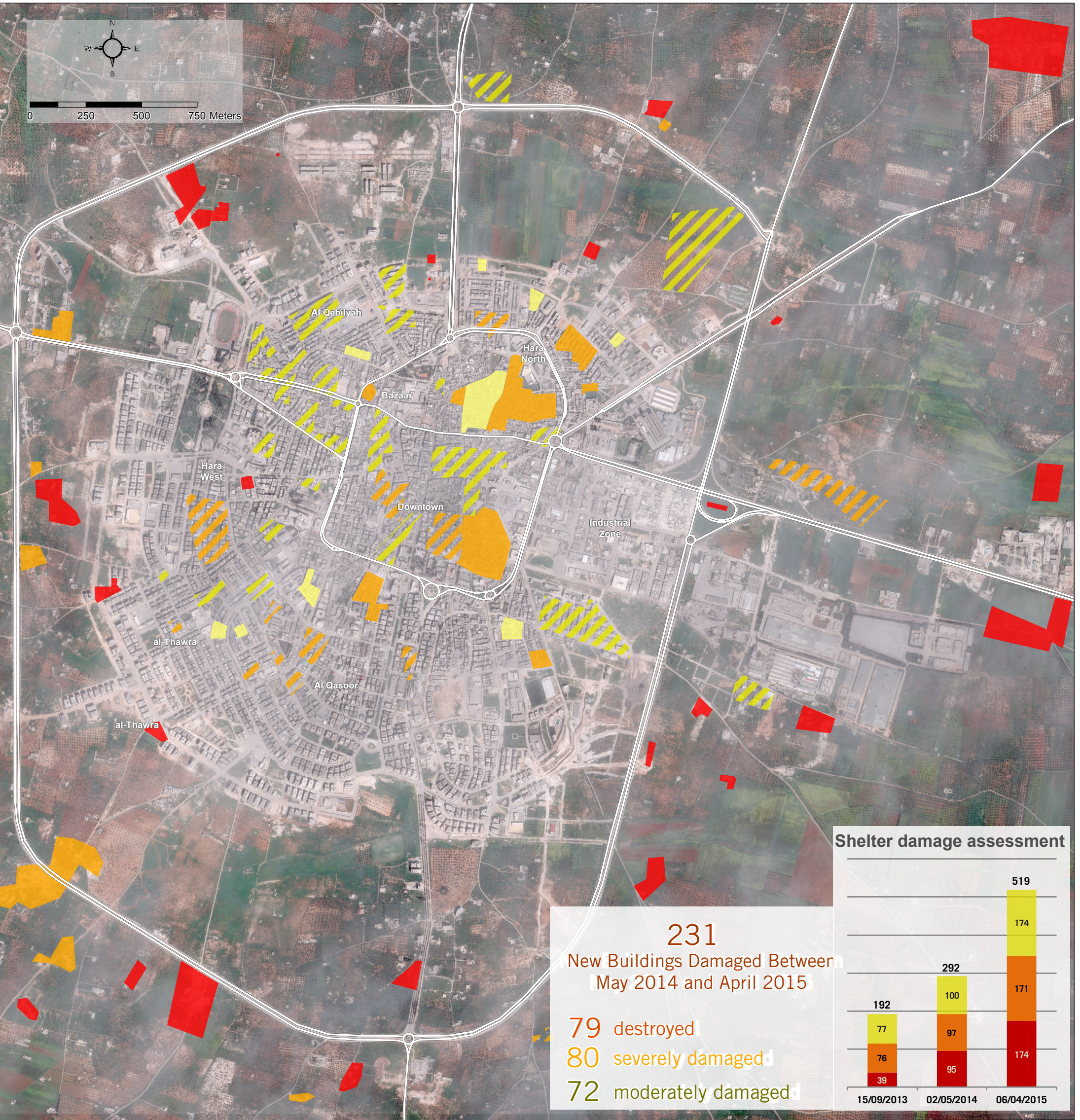


Syria - City of Idlib

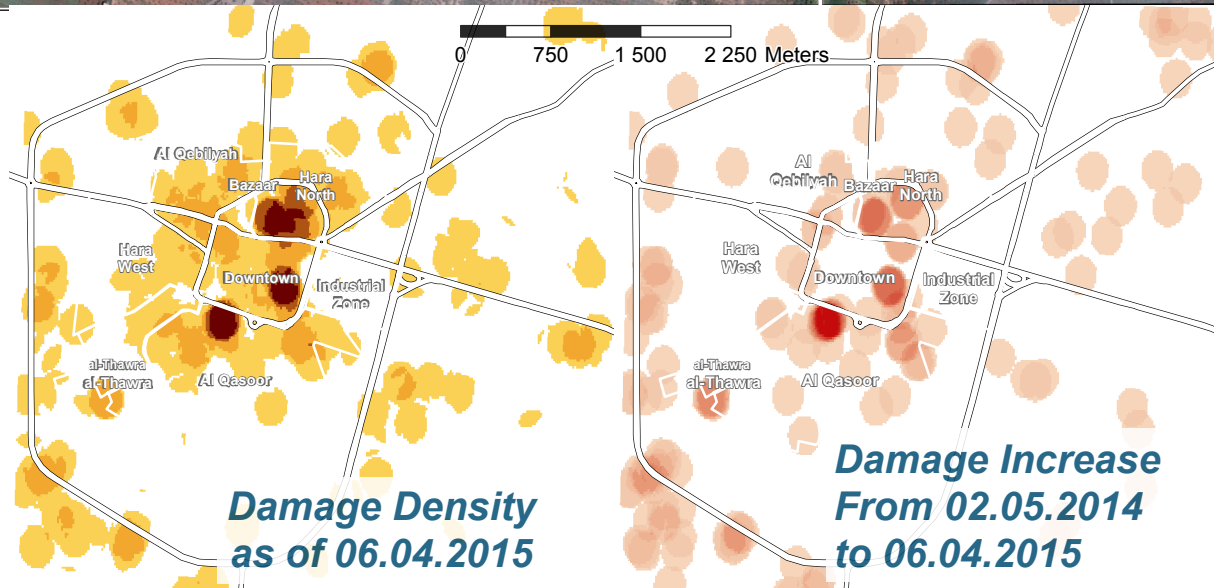
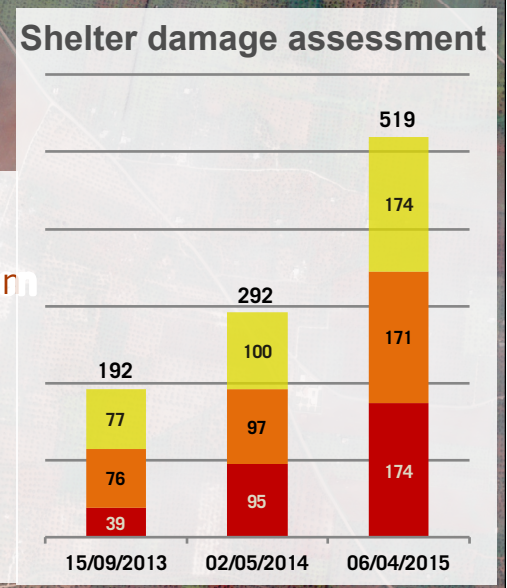
Shelter Damage Assessment as of 6th April 2015

For Authorized Distribution Only
For Humanitarian Purposes Only
Production Date: 22th June 2015

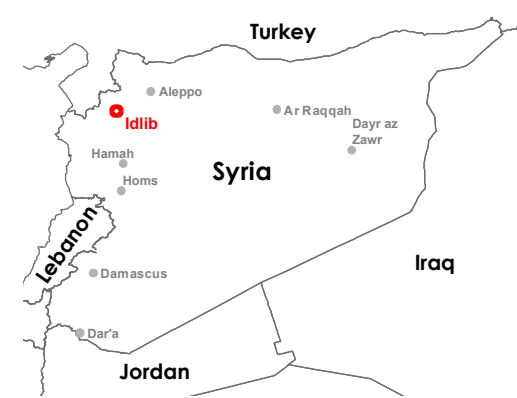


231
New Buildings Damaged Between
May 2014 and April 2015

79 destroyed
80 severely damaged
72 moderately damaged



- #### Damage Zones
- Destroyed
 - Severe Damage
 - Moderate Damage
 - ▨ Severe Damage, Low Density
 - ▨ Moderate Damage, Low Density



Satellite Data: WorldView-2 - Image Date: 06.04.2015
Resolution: 50 cm - Copyright: Airbus
Shelter Damage Assessment Data: UNOSAT/REACH
Projection: WGS 1984 UTM zone 37N
File: REACH_SYR_Map_Idlib_ASMT_SDAcity_22JUN15_A3
Contact: reach.mapping@impact-initiatives.org

Note: Data, designations and boundaries contained in this map are not warranted to be error-free and do not imply acceptance by the REACH partners, donors and associated persons mentioned in this map.