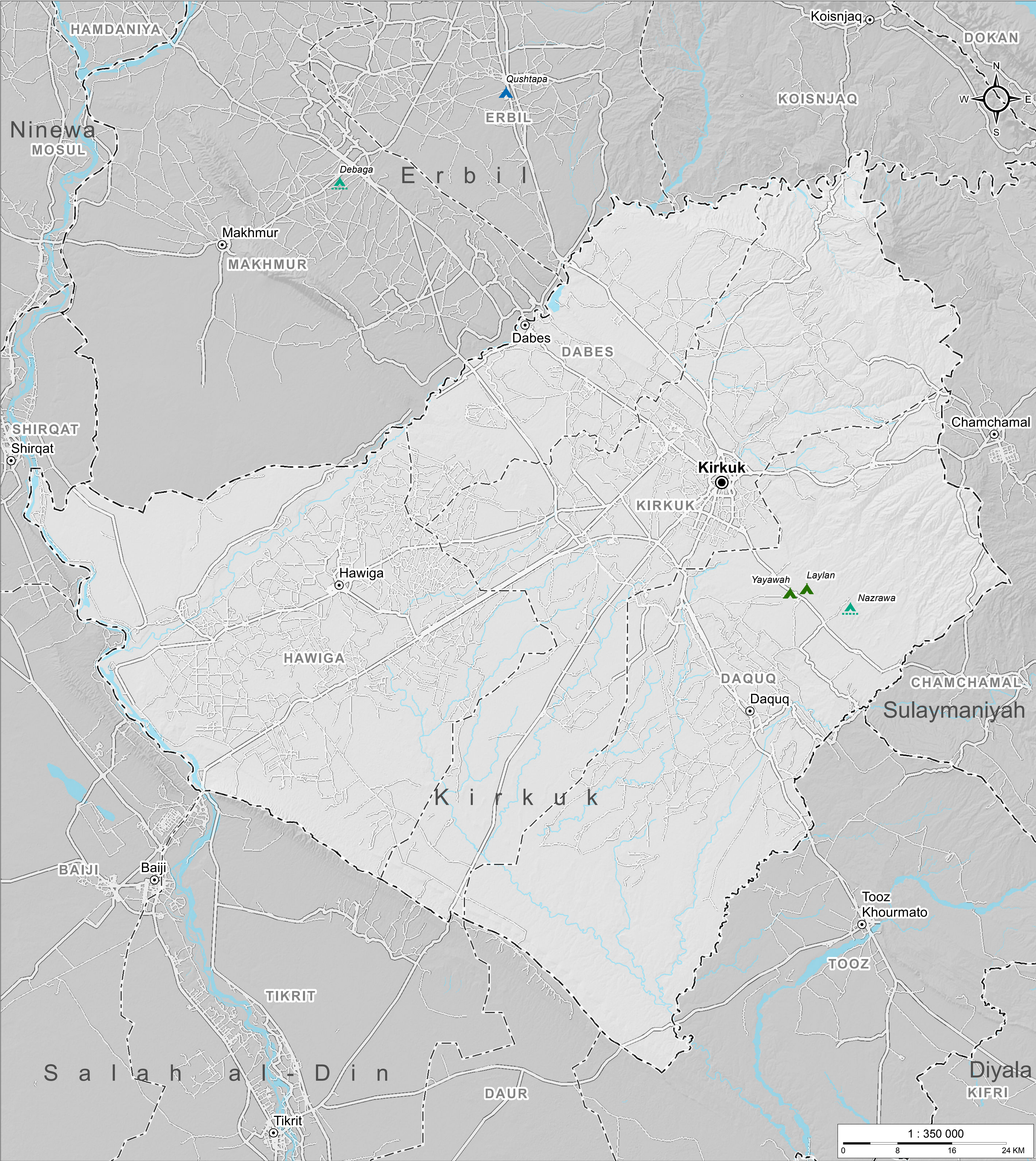


IRAQ - Kirkuk Governorate

Reference Map with Camp Locations

For Humanitarian Purposes Only
Production date : 17 May 2015



- | | | | | | |
|--|---------------------|--|-----------------------------|--|---------|
| | Governorate Borders | | Governorate Capital | | Road |
| | District Borders | | City | | Railway |
| | IDP Camp | | IDP Camp Under Construction | | River |
| | Refugee Camp | | | | |

Data sources:
IDP camp location: CCCM weekly camp status report 28.04.2015
Refugee camp locations: REACH
Administrative boundaries:
GADM/OCHA/HIC 2011/USDOS
Populated places: US NIMA
Roads: OSM

Coordinate System: WGS 1984 UTM Zone 38N
Projection: Transverse Mercator
File: IRQ_REF_Kirkuk_18May2015
Contact: reach.mapping@impact-initiatives.org

Note: Data, designations and boundaries contained on this map are not warranted to error-free and do not imply acceptance by the REACH partners, associated, donors mentioned on this map.