

Introduction

While an estimated 2.1 million people live in displacement sites in Somalia¹, existing information on exact locations and site level vulnerabilities is sparse, and existing assessments have been ad-hoc and unharmonised, resulting in low comparability and verification.

The Detailed Site Assessment (DSA) was triggered in coordination with the Camp Coordination and Camp Management (CCCM) Cluster in order to provide the humanitarian community with up-to-date information on location of internally displaced persons (IDP) sites, the conditions and capacity of the sites and the humanitarian needs of the residents.

Target locations for assessment were selected based on needs identified by the CCCM Cluster

and accessibility for data collection.

A grid pattern approach² was applied during data collection to ensure that all IDP sites in the target area were identified. In each site, two key informant (KI) interviews were conducted: one with the site manager or community leader and one with a women's representative to ensure the perspectives of different groups were captured³. KI responses were aggregated to give one response per question per site.

This factsheet presents a summary of Kalkaal One Site profile along with the needs and priorities of IDPs residing in the site. As the data is captured through KIs, findings should be considered indicative only.

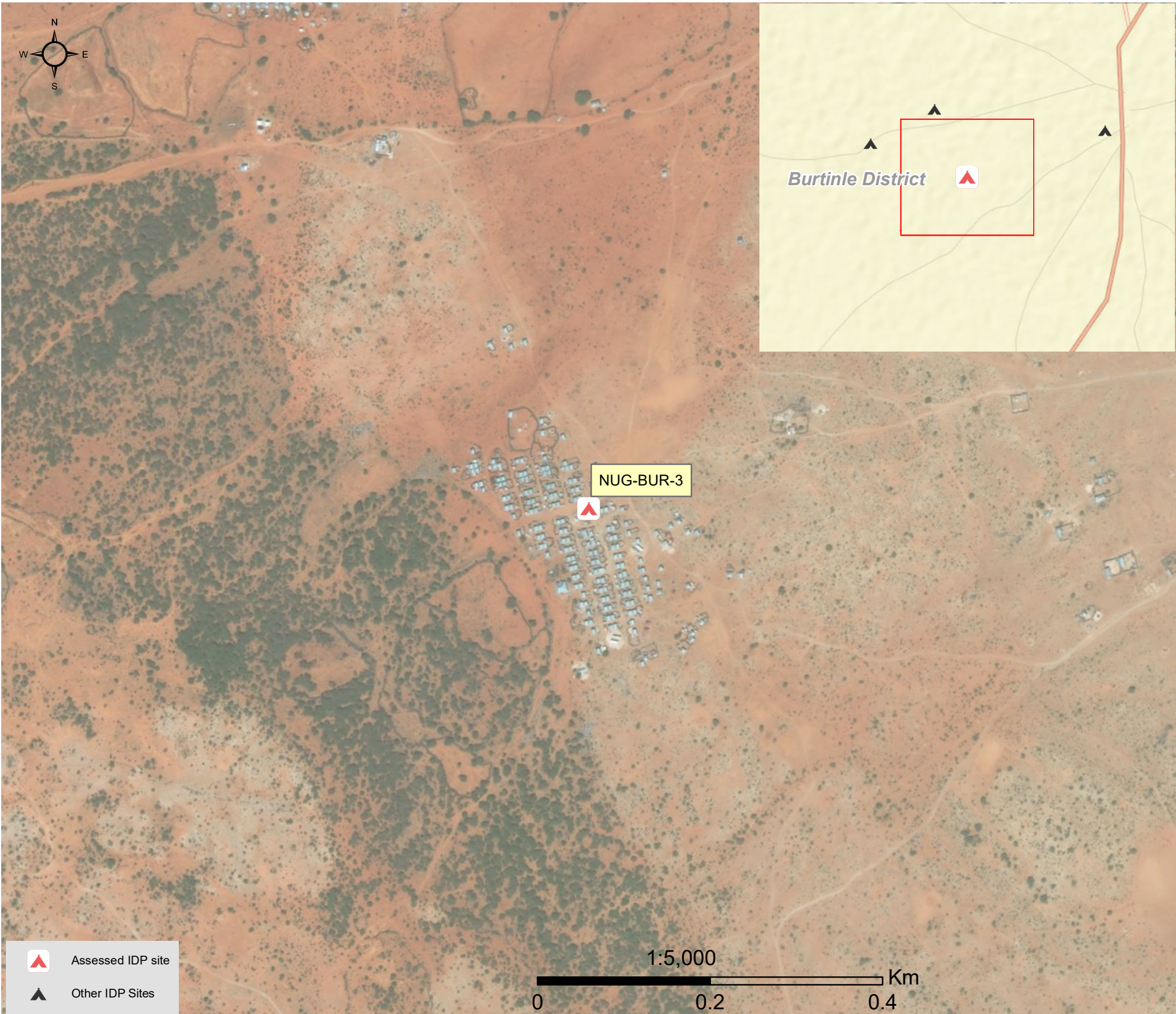
Date assessed: Jan - 2018

Location map



Assessed IDP sites in Burtinle

Coordinates: Lat. 7.6362, Long. 47.8169



1.United Nations High Commissioner for Refugees (UNHCR): Protection & Return Monitoring Network (PRMN), September 2017

2.For each target location, the area was divided into 1km² grids. Enumerator teams then visited each grid to verify whether an IDP site was present. By visiting all grids, teams were able to determine the total number of sites in each location.

3.Where KI responses were significantly divergent, these were verified with the respective KIs with a higher reliability accorded to the response provided by the site manager or community leader.



Site Information

Settlement type	Spontaneous site
Estimated number of individuals	460
Estimated number of households	280
Site capacity reached	Yes
Responsible management agency	Residents
Date when most site residents arrived	Feb-11
Site owner	Local authority



Protection

Number of vulnerable households:

Female-headed households	20
Child-headed households	0
Elderly individuals ⁴	70
Unaccompanied children	0
Individuals with a physical disability	6
Presence of shared community space	Yes
Presence of separate space for women/girls	No
Presence of child friendly space	No
Public lighting in the site	No
Type of landownership	Formal
Risk of eviction in next three months	no



WASH

Access to potable water	Yes
Number of latrines in the site:	
Latrines (mixed)	12
Latrines (male)	12
Latrines (female)	40
Access to handwashing facilities	No



Shelter and Non-Food Items (NFI)

Most common shelter types in the site⁵:

1. Buul	
2. Wattle and Daub	
3. N/A	
Electricity available in the site	No
Access to a NFI market	No
Average walking time to the nearest NFI market	N/A
Perceived safe access to NFI market	N/A



Displacement

Estimated number of households per displacement group:

IDPs	260
Host community/ non-displaced	20
IDP households arrived in the past 3 months	100

Most common areas of origin:

First area of origin	Hiraan
Second area of origin	Gedo
Third area of origin	Lower Juba



Food Security

Primary source of food	Market purchase
Food distributions	Less than monthly
Access to a food market	No



Health and Nutrition

Most common health issue(s) reported in the site:

1. Diphteria
2. Other
3. N/A

Access to healthcare services	No
Average walking time to the nearest health service	N/A
Women give birth in the site	Yes
Access to nutrition services	Yes
Average walking time to the nearest nutrition service	90 minutes

Access to nutrition services: Yes



Education

Education services available	No
Average walking time to the nearest school	N/A

Education facilities available to residents in the site⁵:

1. N/A
2. N/A
3. N/A



Communication

Three most trusted sources of information⁵:

1. Friends, neighbours and family
2. TV
3. Radio

Most commonly spoken language	Somali Standard
-------------------------------	-----------------

4.More than 60 years old.

5.Key informants could select multiple responses.

Introduction

While an estimated 2.1 million people live in displacement sites in Somalia¹, existing information on exact locations and site level vulnerabilities is sparse, and existing assessments have been ad-hoc and unharmonised, resulting in low comparability and verification.

The Detailed Site Assessment (DSA) was triggered in coordination with the Camp Coordination and Camp Management (CCCM) Cluster in order to provide the humanitarian community with up-to-date information on location of internally displaced persons (IDP) sites, the conditions and capacity of the sites and the humanitarian needs of the residents.

Target locations for assessment were selected based on needs identified by the CCCM Cluster

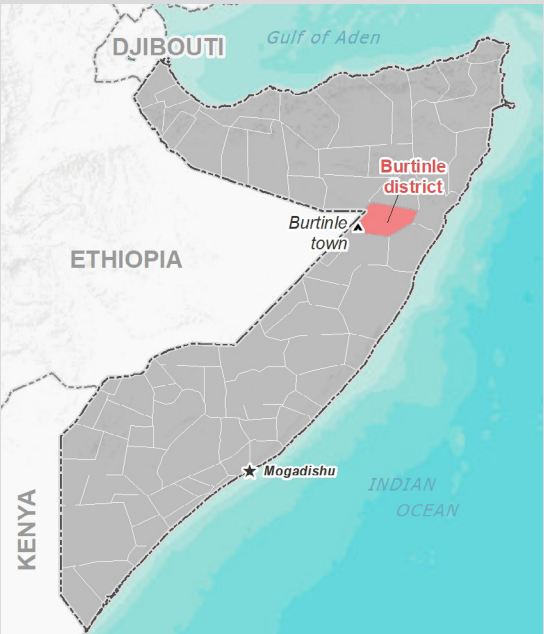
and accessibility for data collection.

A grid pattern approach² was applied during data collection to ensure that all IDP sites in the target area were identified. In each site, two key informant (KI) interviews were conducted: one with the site manager or community leader and one with a women's representative to ensure the perspectives of different groups were captured³. KI responses were aggregated to give one response per question per site.

This factsheet presents a summary of Kalkal two Site profile along with the needs and priorities of IDPs residing in the site. As the data is captured through KIs, findings should be considered indicative only.

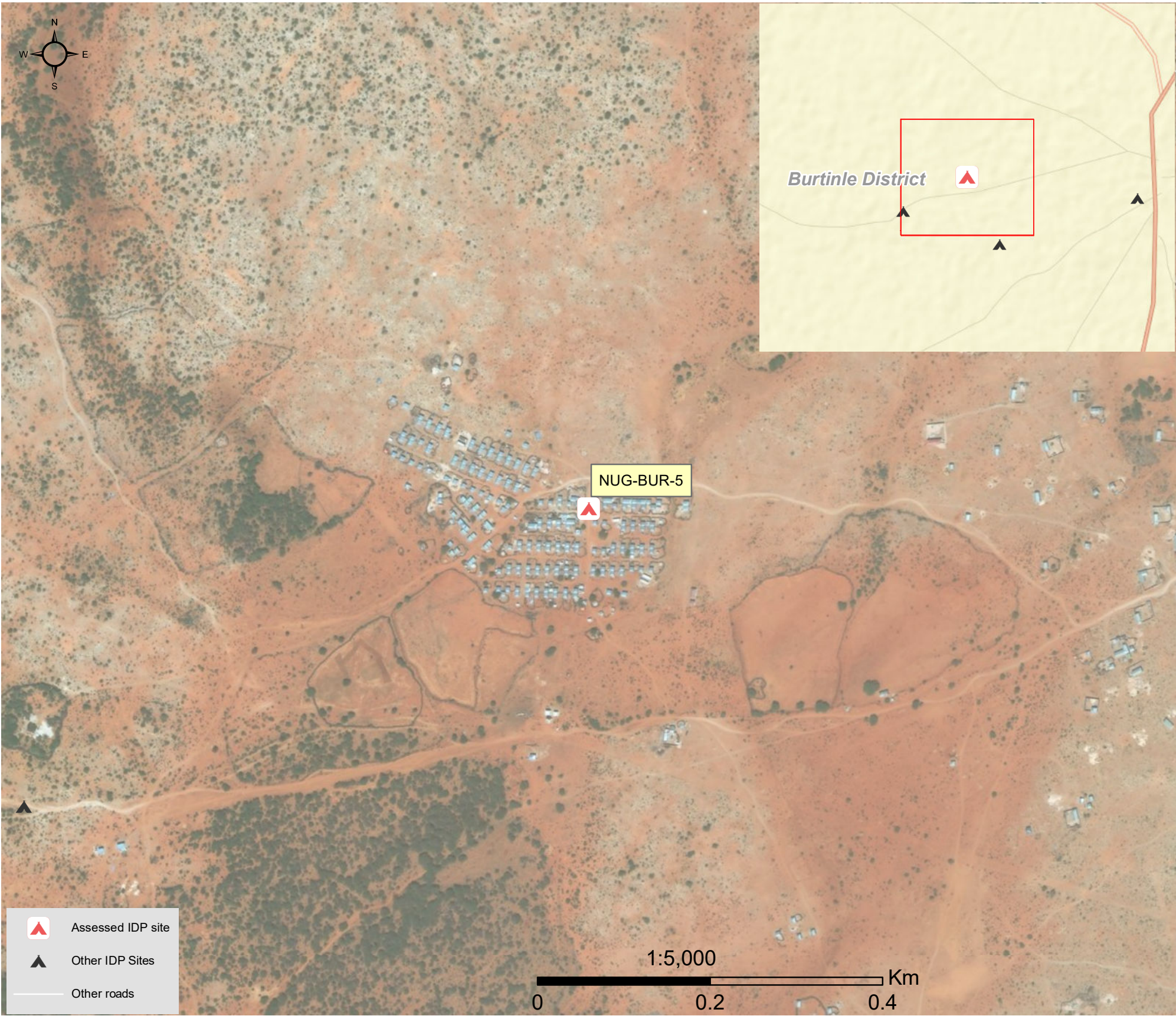
Date assessed: **Jan - 2018**

Location map



Assessed IDP sites in Burtinle

Coordinates: Lat. 7.64234, Long. 47.8139



1.United Nations High Commissioner for Refugees (UNHCR): Protection & Return Monitoring Network (PRMN), September 2017

2.For each target location, the area was divided into 1km² grids. Enumerator teams then visited each grid to verify whether an IDP site was present. By visiting all grids, teams were able to determine the total number of sites in each location.

3.Where KI responses were significantly divergent, these were verified with the respective KIs with a higher reliability accorded to the response provided by the site manager or community leader.



Site Information

Settlement type	Spontaneous site
Estimated number of individuals	1920
Estimated number of households	320
Site capacity reached	No
Responsible management agency	Local authority
Date when most site residents arrived	Jan-13
Site owner	Local authority



Protection

Number of vulnerable households:	
Female-headed households	150
Child-headed households	30
Elderly individuals ⁴	900
Unaccompanied children	0
Individuals with a physical disability	20
Presence of shared community space	Yes
Presence of separate space for women/girls	No
Presence of child friendly space	No
Public lighting in the site	No
Type of landownership	Unknown
Risk of eviction in next three months	no



WASH

Access to potable water	Yes
Number of latrines in the site:	
Latrines (mixed)	32
Latrines (male)	0
Latrines (female)	0
Access to handwashing facilities	No



Shelter and Non-Food Items (NFI)

Most common shelter types in the site⁵:	
1. Buul	
2. Tent	
3. Timber and plastic sheet	
Electricity available in the site	No
Access to a NFI market	No
Average walking time to the nearest NFI market	N/A
Perceived safe access to NFI market	N/A



Displacement

Estimated number of households per displacement group:	
IDPs	320
Host community/ non-displaced	0
IDP households arrived in the past 3 months	100
Most common areas of origin:	
First area of origin	Bay
Second area of origin	Middle Juba
Third area of origin	Mudug



Food Security

Primary source of food	Borrow food/money
Food distributions	Less than monthly
Access to a food market	No



Health and Nutrition

Most common health issue(s) reported in the site:	
1. AWD / Cholera	
2. Malaria	
3. Diphtheria	
Access to healthcare services	No
Average walking time to the nearest health service	N/A
Women give birth in the site	Yes
Access to nutrition services	No
Average walking time to the nearest nutrition service	N/A
Access to nutrition services:	No



Education

Education services available	Yes
Average walking time to the nearest school	6 minutes
Education facilities available to residents in the site⁵:	
1. Quranic	
2. N/A	
3. N/A	



Communication

Three most trusted sources of information⁵:	
1. Friends, neighbours and family	
2. Community leader	
3. Radio	
Most commonly spoken language	Somali Standard

4. More than 60 years old.
5. Key informants could select multiple responses.



Introduction

While an estimated 2.1 million people live in displacement sites in Somalia¹, existing information on exact locations and site level vulnerabilities is sparse, and existing assessments have been ad-hoc and unharmonised, resulting in low comparability and verification.

The Detailed Site Assessment (DSA) was triggered in coordination with the Camp Coordination and Camp Management (CCCM) Cluster in order to provide the humanitarian community with up-to-date information on location of internally displaced persons (IDP) sites, the conditions and capacity of the sites and the humanitarian needs of the residents.

Target locations for assessment were selected based on needs identified by the CCCM Cluster

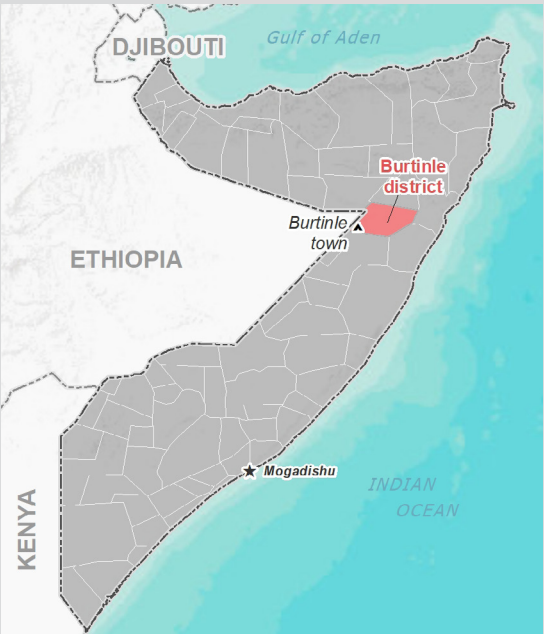
and accessibility for data collection.

A grid pattern approach² was applied during data collection to ensure that all IDP sites in the target area were identified. In each site, two key informant (KI) interviews were conducted: one with the site manager or community leader and one with a women's representative to ensure the perspectives of different groups were captured³. KI responses were aggregated to give one response per question per site.

This factsheet presents a summary of Caano-macays Site profile along with the needs and priorities of IDPs residing in the site. As the data is captured through KIs, findings should be considered indicative only.

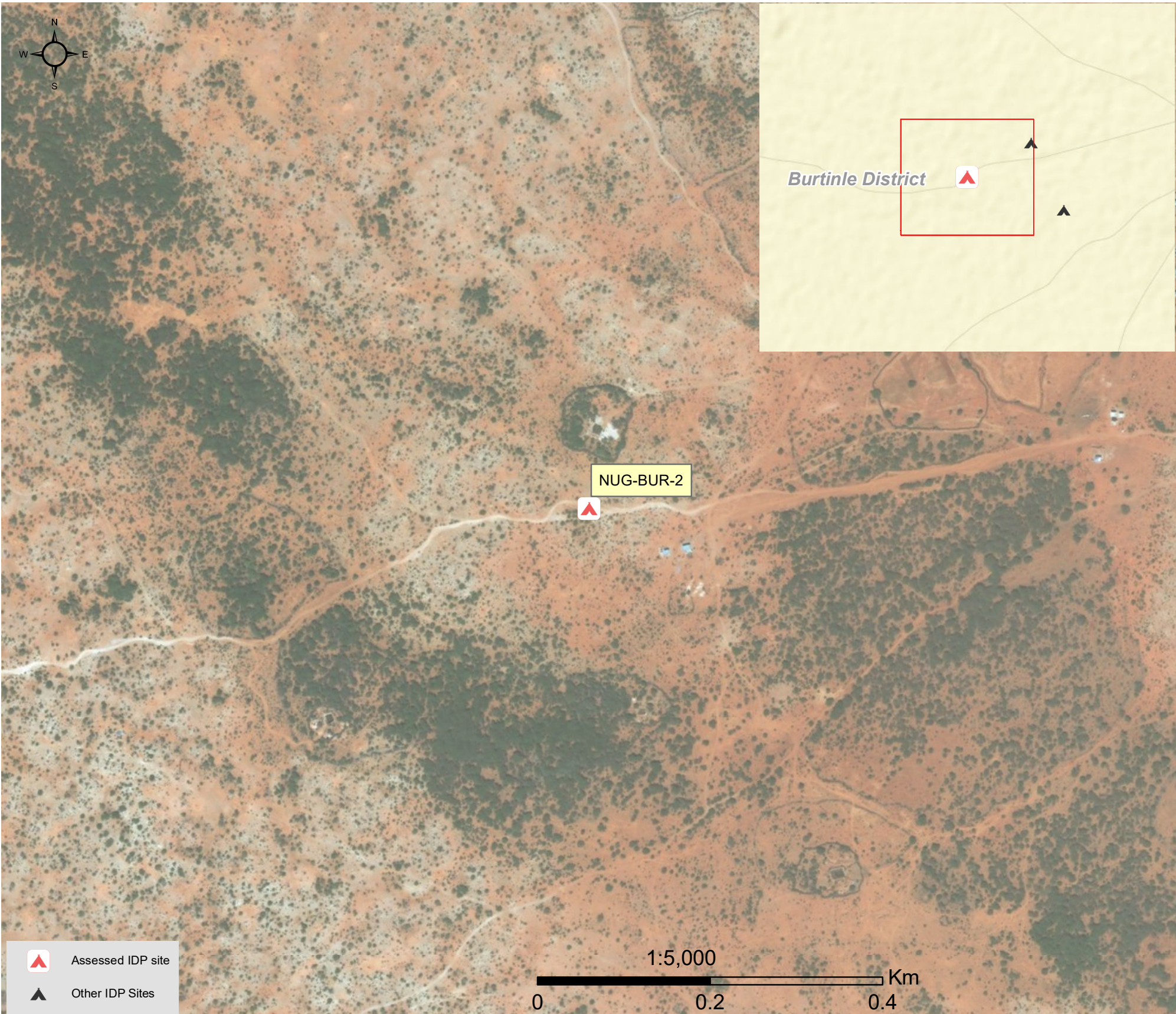
Date assessed: Jan - 2018

Location map



Assessed IDP sites in Burtinle

Coordinates: Lat. 7.63924, Long. 47.80801



1.United Nations High Commissioner for Refugees (UNHCR): Protection & Return Monitoring Network (PRMN), September 2017

2.For each target location, the area was divided into 1km² grids. Enumerator teams then visited each grid to verify whether an IDP site was present. By visiting all grids, teams were able to determine the total number of sites in each location.

3.Where KI responses were significantly divergent, these were verified with the respective KIs with a higher reliability accorded to the response provided by the site manager or community leader.



Site Information

Settlement type	Planned site
Estimated number of individuals	250
Estimated number of households	106
Site capacity reached	No
Responsible management agency	No management
Date when most site residents arrived	Dec-17
Site owner	Private



Protection

Number of vulnerable households:	
Female-headed households	20
Child-headed households	0
Elderly individuals ⁴	70
Unaccompanied children	0
Individuals with a physical disability	14
Presence of shared community space	No
Presence of separate space for women/girls	No
Presence of child friendly space	No
Public lighting in the site	No
Type of landownership	Informal
Risk of eviction in next three months	no



WASH

Access to potable water	Yes
Number of latrines in the site:	
Latrines (mixed)	0
Latrines (male)	0
Latrines (female)	0
Access to handwashing facilities	N/A



Shelter and Non-Food Items (NFI)

Most common shelter types in the site⁵:	
1. Buul	
2. N/A	
3. N/A	
Electricity available in the site	No
Access to a NFI market	No
Average walking time to the nearest NFI market	N/A
Perceived safe access to NFI market	N/A



Displacement

Estimated number of households per displacement group:	
IDPs	106
Host community/ non-displaced	0
IDP households arrived in the past 3 months	106
Most common areas of origin:	
First area of origin	Nugaal
Second area of origin	Mudug
Third area of origin	Bay



Food Security

Primary source of food	Household production
Food distributions	None
Access to a food market	No



Health and Nutrition

Most common health issue(s) reported in the site:	
1. Malaria	
2. N/A	
3. N/A	
Access to healthcare services	No
Average walking time to the nearest health service	N/A
Women give birth in the site	No
Access to nutrition services	No
Average walking time to the nearest nutrition service	N/A
Access to nutrition services:	No



Education

Education services available	No
Average walking time to the nearest school	N/A
Education facilities available to residents in the site⁵:	
1. N/A	
2. N/A	
3. N/A	



Communication

Three most trusted sources of information⁵:	
1. Friends, neighbours and family	
2. N/A	
3. N/A	
Most commonly spoken language	Somali Standard

4.More than 60 years old.

5.Key informants could select multiple responses.





Introduction

While an estimated 2.1 million people live in displacement sites in Somalia¹, existing information on exact locations and site level vulnerabilities is sparse, and existing assessments have been ad-hoc and unharmonised, resulting in low comparability and verification.

The Detailed Site Assessment (DSA) was triggered in coordination with the Camp Coordination and Camp Management (CCCM) Cluster in order to provide the humanitarian community with up-to-date information on location of internally displaced persons (IDP) sites, the conditions and capacity of the sites and the humanitarian needs of the residents.

Target locations for assessment were selected based on needs identified by the CCCM Cluster

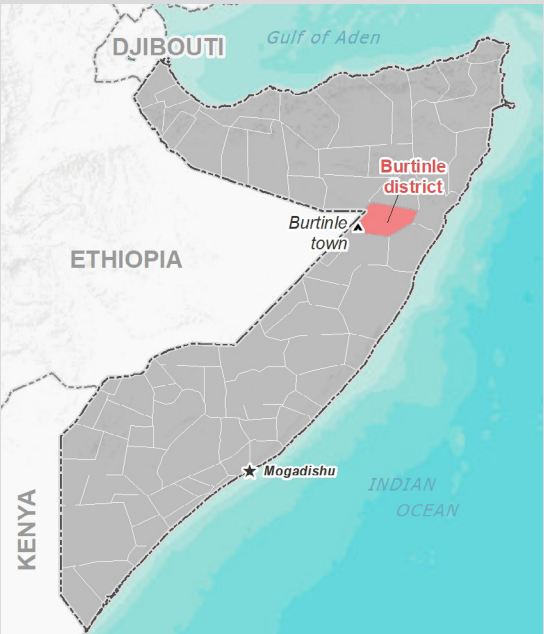
and accessibility for data collection.

A grid pattern approach² was applied during data collection to ensure that all IDP sites in the target area were identified. In each site, two key informant (KI) interviews were conducted: one with the site manager or community leader and one with a women's representative to ensure the perspectives of different groups were captured³. KI responses were aggregated to give one response per question per site.

This factsheet presents a summary of Camp daruraha Site profile along with the needs and priorities of IDPs residing in the site. As the data is captured through KIs, findings should be considered indicative only.

Date assessed: Jan - 2018

Location map



Assessed IDP sites in Burtinle

Coordinates: Lat. 7.6404, Long. 47.82956



1.United Nations High Commissioner for Refugees (UNHCR): Protection & Return Monitoring Network (PRMN), September 2017

2.For each target location, the area was divided into 1km² grids. Enumerator teams then visited each grid to verify whether an IDP site was present. By visiting all grids, teams were able to determine the total number of sites in each location.

3.Where KI responses were significantly divergent, these were verified with the respective KIs with a higher reliability accorded to the response provided by the site manager or community leader.





Site Information

Settlement type	Planned site
Estimated number of individuals	360
Estimated number of households	60
Site capacity reached	Yes
Responsible management agency	Residents
Date when most site residents arrived	Jan-06
Site owner	Private



Protection

Number of vulnerable households:

Female-headed households	60
Child-headed households	40
Elderly individuals ⁴	60
Unaccompanied children	15
Individuals with a physical disability	3

Presence of shared community space	Yes
Presence of separate space for women/girls	No
Presence of child friendly space	No
Public lighting in the site	No
Type of landownership	Informal
Risk of eviction in next three months	no



WASH

Access to potable water	Yes
Number of latrines in the site:	
Latrines (mixed)	6
Latrines (male)	0
Latrines (female)	0
Access to handwashing facilities	Yes



Shelter and Non-Food Items (NFI)

Most common shelter types in the site⁵:

1. Stone	
2. N/A	
3. N/A	
Electricity available in the site	No
Access to a NFI market	Yes
Average walking time to the nearest NFI market	5 minutes
Perceived safe access to NFI market	Yes



Displacement

Estimated number of households per displacement group:

IDPs	60
Host community/ non-displaced	0
IDP households arrived in the past 3 months	10

Most common areas of origin:

First area of origin	Bay
Second area of origin	Lower Shabelle
Third area of origin	Bakool



Food Security

Primary source of food	Market purchase
Food distributions	None
Access to a food market	Yes



Health and Nutrition

Most common health issue(s) reported in the site:

1. Malaria
2. N/A
3. N/A

Access to healthcare services	No
Average walking time to the nearest health service	N/A
Women give birth in the site	No
Access to nutrition services	No
Average walking time to the nearest nutrition service	N/A

Access to nutrition services: No



Education

Education services available	Yes
Average walking time to the nearest school	15 minutes

Education facilities available to residents in the site⁵:

1. Primary
2. Secondary
3. Quranic



Communication

Three most trusted sources of information⁵:

1. Friends, neighbours and family
2. N/A
3. N/A

Most commonly spoken language	Somali Maay
-------------------------------	-------------

4.More than 60 years old.

5.Key informants could select multiple responses.

Introduction

While an estimated 2.1 million people live in displacement sites in Somalia¹, existing information on exact locations and site level vulnerabilities is sparse, and existing assessments have been ad-hoc and unharmonised, resulting in low comparability and verification.

The Detailed Site Assessment (DSA) was triggered in coordination with the Camp Coordination and Camp Management (CCCM) Cluster in order to provide the humanitarian community with up-to-date information on location of internally displaced persons (IDP) sites, the conditions and capacity of the sites and the humanitarian needs of the residents.

Target locations for assessment were selected based on needs identified by the CCCM Cluster

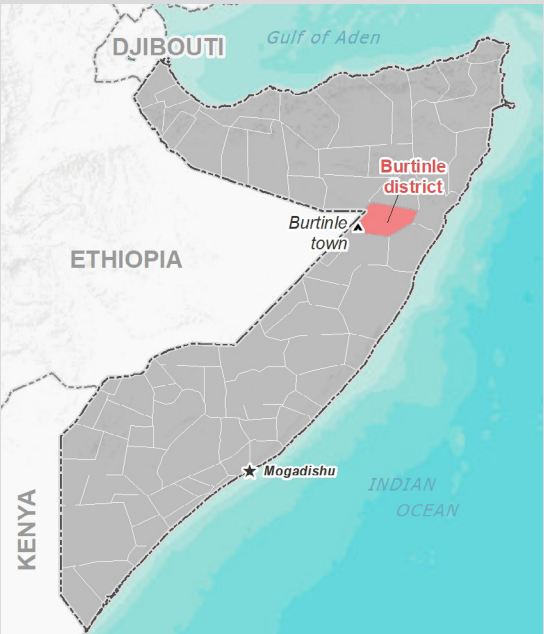
and accessibility for data collection.

A grid pattern approach² was applied during data collection to ensure that all IDP sites in the target area were identified. In each site, two key informant (KI) interviews were conducted: one with the site manager or community leader and one with a women's representative to ensure the perspectives of different groups were captured³. KI responses were aggregated to give one response per question per site.

This factsheet presents a summary of kaamladan Site profile along with the needs and priorities of IDPs residing in the site. As the data is captured through KIs, findings should be considered indicative only.

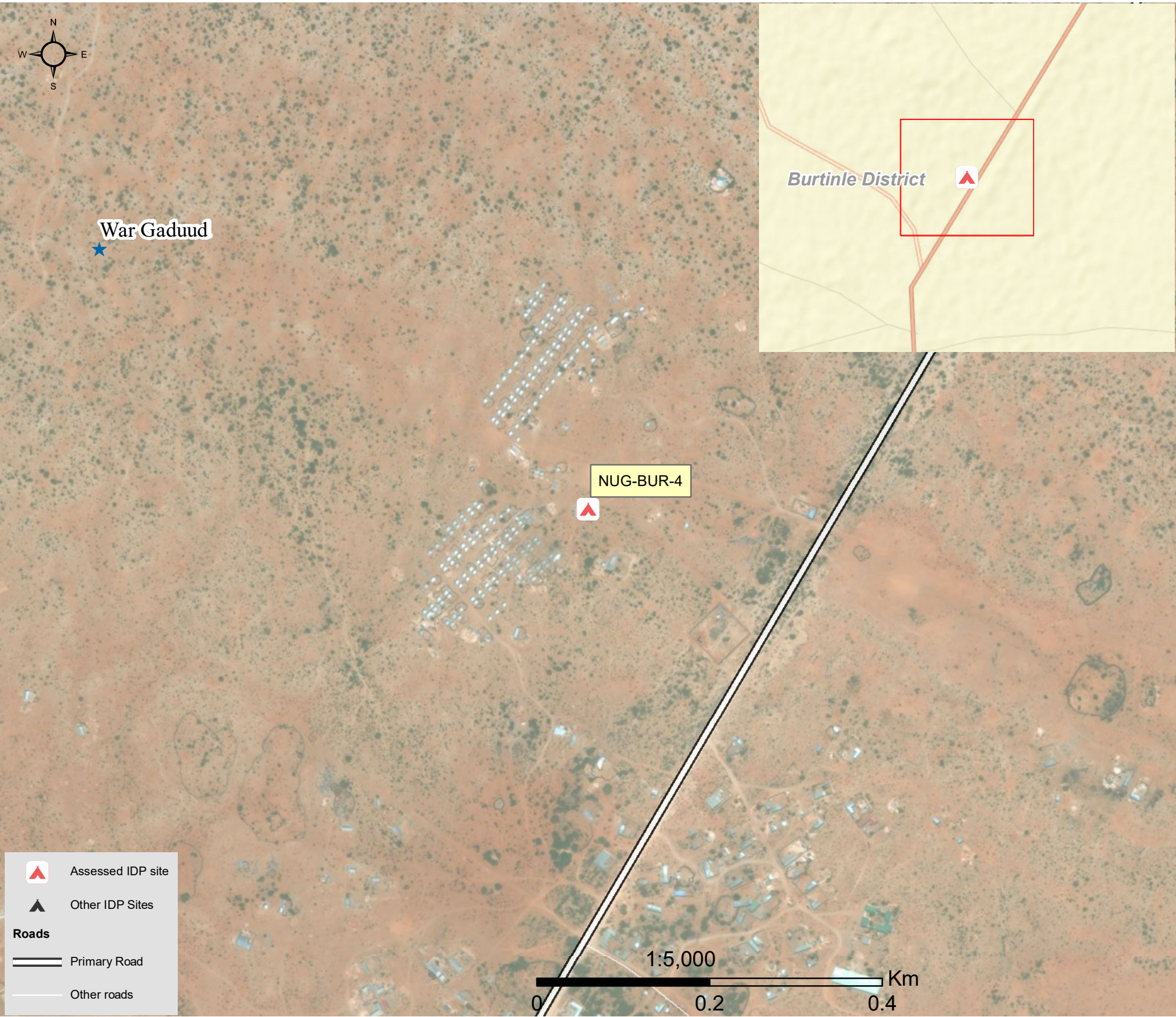
Date assessed: Jan - 2018

Location map



Assessed IDP sites in Burtinle

Coordinates: Lat. 7.65812, Long. 47.83592



1.United Nations High Commissioner for Refugees (UNHCR): Protection & Return Monitoring Network (PRMN), September 2017

2.For each target location, the area was divided into 1km² grids. Enumerator teams then visited each grid to verify whether an IDP site was present. By visiting all grids, teams were able to determine the total number of sites in each location.

3.Where KI responses were significantly divergent, these were verified with the respective KIs with a higher reliability accorded to the response provided by the site manager or community leader.



Site Information

Settlement type	Spontaneous site
Estimated number of individuals	1620
Estimated number of households	270
Site capacity reached	Yes
Responsible management agency	Residents
Date when most site residents arrived	Jun-11
Site owner	Local authority



Protection

Number of vulnerable households:	
Female-headed households	52
Child-headed households	0
Elderly individuals ⁴	220
Unaccompanied children	0
Individuals with a physical disability	3
Presence of shared community space	No
Presence of separate space for women/girls	No
Presence of child friendly space	No
Public lighting in the site	No
Type of landownership	Formal
Risk of eviction in next three months	no



WASH

Access to potable water	No
Number of latrines in the site:	
Latrines (mixed)	10
Latrines (male)	0
Latrines (female)	0
Access to handwashing facilities	No



Shelter and Non-Food Items (NFI)

Most common shelter types in the site⁵:	
1. Buul	
2. Mud Adobe Block	
3. N/A	
Electricity available in the site	No
Access to a NFI market	No
Average walking time to the nearest NFI market	N/A
Perceived safe access to NFI market	N/A



Displacement

Estimated number of households per displacement group:	
IDPs	220
Host community/ non-displaced	50
IDP households arrived in the past 3 months	71
Most common areas of origin:	
First area of origin	Nugaal
Second area of origin	Bay
Third area of origin	Hiraan



Food Security

Primary source of food	Market purchase
Food distributions	None
Access to a food market	No



Health and Nutrition

Most common health issue(s) reported in the site:	
1. Diphteria	
2. Other	
3. N/A	
Access to healthcare services	No
Average walking time to the nearest health service	N/A
Women give birth in the site	Yes
Access to nutrition services	Yes
Average walking time to the nearest nutrition service	10 minutes
Access to nutrition services:	Yes



Education

Education services available	No
Average walking time to the nearest school	N/A
Education facilities available to residents in the site⁵:	
1. N/A	
2. N/A	
3. N/A	



Communication

Three most trusted sources of information⁵:	
1. TV	
2. Government official	
3. Radio	
Most commonly spoken language	Somali Standard

4.More than 60 years old.

5.Key informants could select multiple responses.

