

Summary

This profile provides an overview of water, sanitation and hygiene (WASH) infrastructure within Camp 16 (Potibonia) in Ukhia, Cox's Bazar. Primary data for this round was collected from 17 September to 22 October 2018.¹ Findings should be considered indicative only. Full camp dataset is available on [HDX](#).

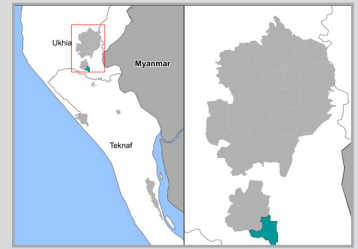
Site Overview

# of individuals:	21,639
# of households:	4,839
# of shelters:	5,017
# of individuals per shelter:	4

Key WASH Infrastructure

# of latrines: (% functional and safe ²):	1,015 (89%)
# of improved water sources: ³ (% functional):	540 (81%)
# of washrooms:	828

Location Map






Water Access

Three most commonly identified types of water points, by functionality:



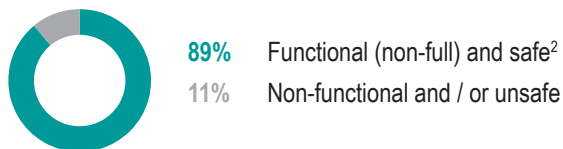
Key sectoral standards:

	Target	Current Round	Achievement
# of people per functional improved water source	max. 250	49	
% of shelters with at least 1 functional improved water source ³ within 200m	100%	100%	
% of functional improved water sources with no latrine within 10m	100%	45%	

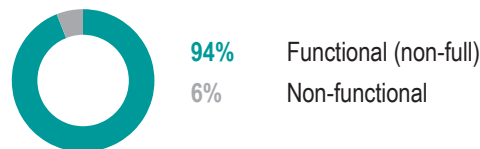
Sanitation

Latrine characteristics:

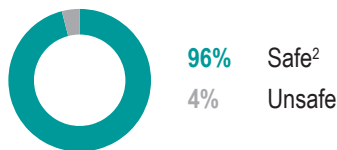
Functionality and safety



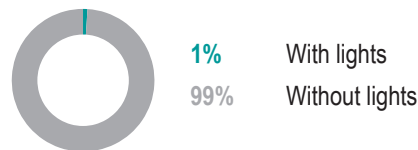
Functionality







Safety



Lighting



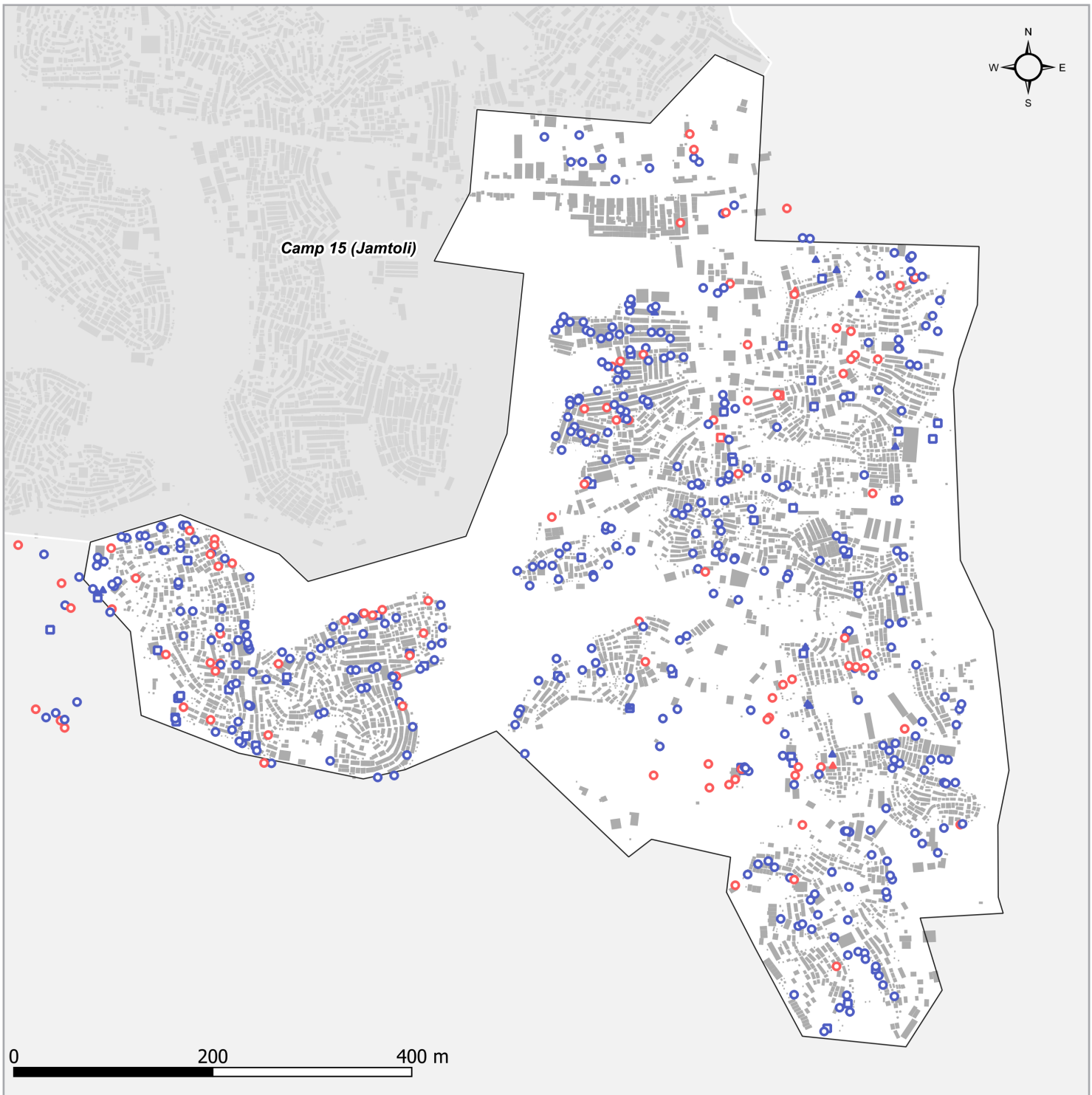
Key sectoral standards:

	Target	Current Round	Achievement
# of people per functional (non-full) and safe latrine ²	max. 20	24	
# of people per functional (non-full) latrine	max. 20	23	
# of people per safe latrine ²	max. 20	23	
% of shelters with at least one functional and safe latrine ² block within 50m	100%	99%	

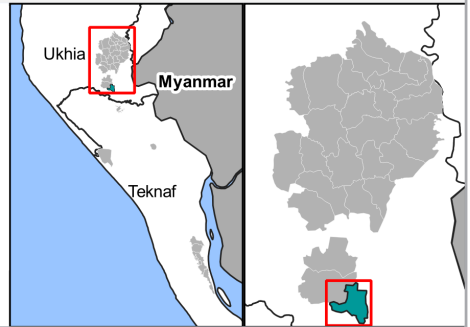
Targets based on long term WASH Sector Standards / Indicators for the Rohingya response, Sphere Minimum Standards as well as Department of Public Health and Environment (DPHE) Minimum Standards.  Minimum standard/indicator reached,  75%-99% minimum standard/indicator reached,  50-74% minimum standard/indicator reached,  Less than 50% of minimum standard/indicator reached.

1. REACH enumerators conducted a full sweep of all sites and camps (as per boundaries defined by ISCG) and used an Open Data Kit (ODK) form to log all key infrastructure observed during this sweep, with further details to be logged for WASH infrastructure.
 2. Safe refers to fully covered latrines (i.e. a latrine with four walls, a roof and a lockable door).
 3. This includes handpumps / tube wells, tapstands and water tanks.

Water Access

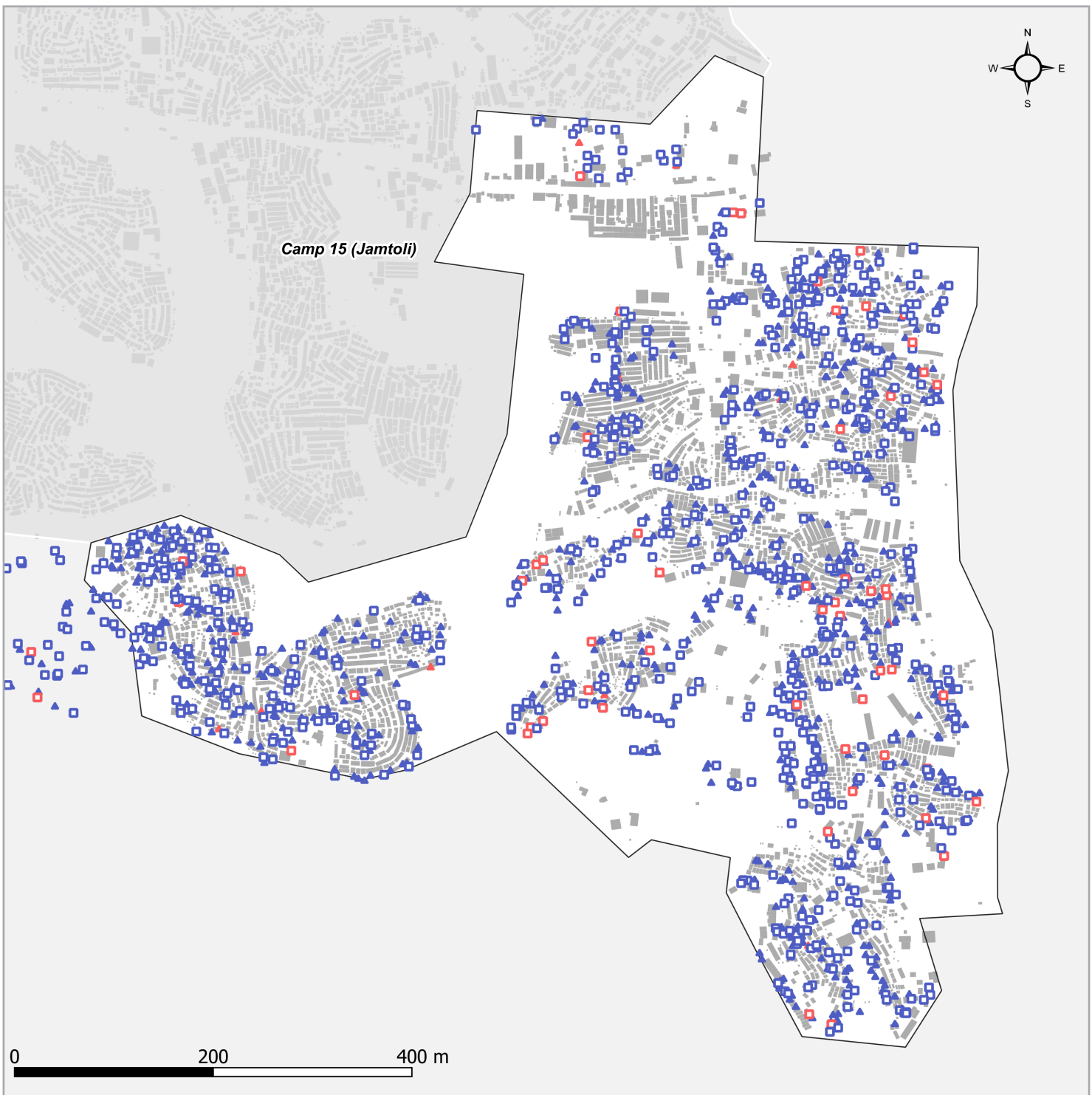


Functioning	Non- Functioning	Boundaries
○ Tubewells	○ Tubewell	□ Camps
▲ Tapstand	▲ Tapstand	■ Shelters
□ Water Tank	□ Water Tank	

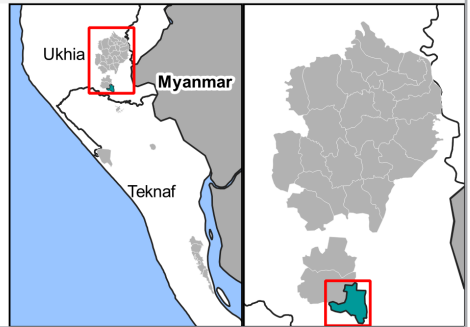


The boundaries and names used on this map do not imply official endorsement or acceptance by the United Nations

Sanitation



Functioning	Non-Functioning	Boundaries
■ Latrines	■ Latrines	 Camps
▲ WASH Room	▲ WASH Room	 Shelters



The boundaries and names used on this map do not imply official endorsement or acceptance by the United Nations