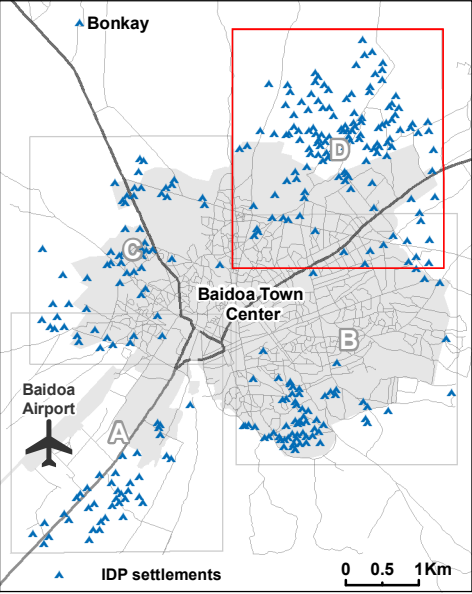
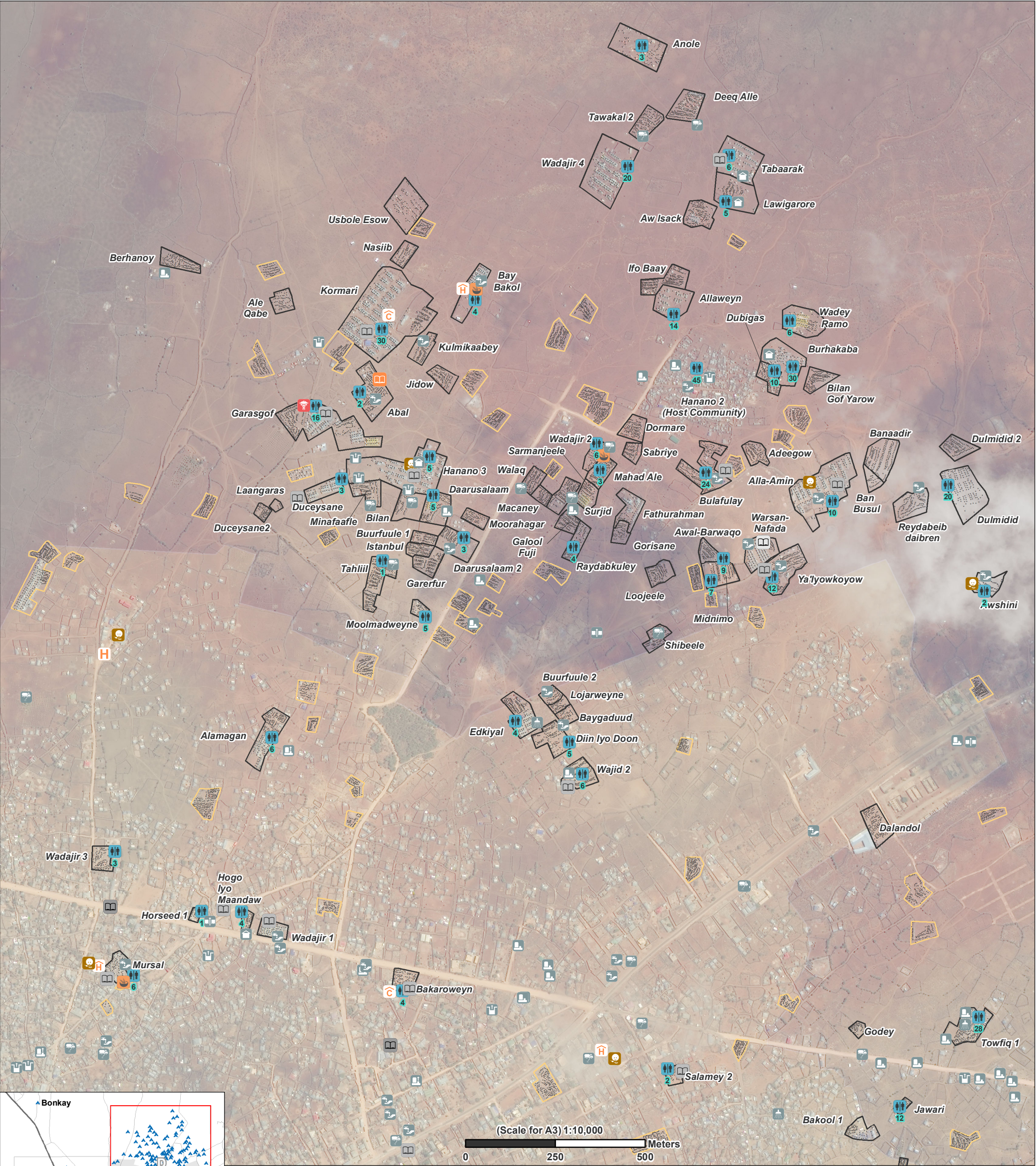


SOMALIA – Baidoa IDP Settlement Profiling

Baidoa D: Settlements and Facilities – April 2017

For Humanitarian Purposes Only
Production date: 20 June 2017



Structures

- Shelters (15,502)
- Latrine blocks (41)
- Informal school (1)
- ECD (1)
- Primary school (15)
- Secondary school (2)

- Burkad (3)
- Other piped system (3)
- Protected well with hand pump (4)
- Protected well without hand pump (22)

- Unprotected well (10)
- Water Tank and tap (26)
- Water kiosk (5)
- Water trucking distribution point (18)

- Nutrition center (6)
- Health centre (3)
- Hospital (1)
- Primary health care unit (2)
- Referral health centre (1)
- Food market (3)

Boundaries

- Assessed IDP settlements (84)
- Remotely identified IDP settlement (Not yet field validated) (49)



Funded by
EUROPEAN COMMISSION
USAID
FROM THE AMERICAN PEOPLE

Data sources:
Settlements and Facilities: REACH field team
Imagery and Shelter points: UNOSAT 21APR2017
Administrative boundaries, Roads, Towns: UNDP
Coordinate System: WGS 1984 UTM Zone 38N
Contact: reach.mapping@impact-initiatives.org
File: reach_som_map_baidoa_d_idp_profile_2017_a3
Note: Data, designations and boundaries contained on this map are not warranted to be error-free and do not imply acceptance by the REACH partners, associates, donors mentioned on this map.