



Nyal Port Monitoring

Panyijiar County, Unity State, South Sudan

CONTEXT AND METHODOLOGY

Nyal town is located in Northern Panyijiar County, Unity State, along the banks of the Sudd, the third largest swamp in the world. Since the beginning of the crisis, IDPs from Unity and Jonglei States have perceived Nyal as a safe location with ample resources. Recently, Nyal has also become a key location for people travelling to and from nearby islands.

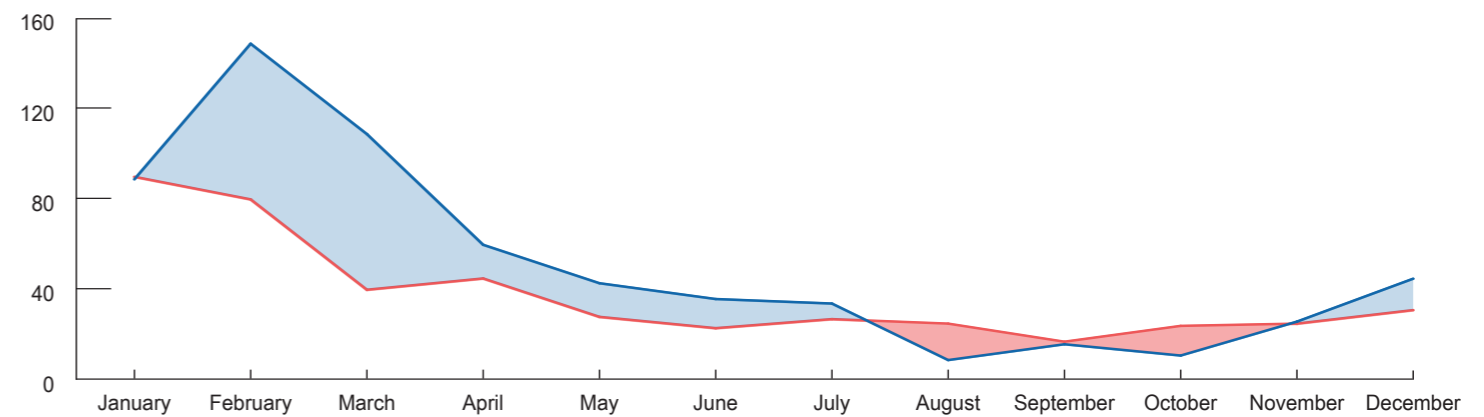
Since 1 November 2016, REACH has monitored three ports in Nyal - Gap Port, Nyal Port and Katieth Port - to record the arrivals and departures on a daily basis. The information gathered covers household demographics, key push and pull factors, health concerns, vulnerable populations, and general transportation routes.

REACH port monitors collected information from 7:30am - 6:30pm Monday through Friday to ensure complete coverage of Nyal's three ports. REACH teams attempt to interview all arrivals and departures at the household level using a contextualised survey. However, please note that the data presented here is not representative, rather indicative of movement trends for the assessed population. Daily data was synthesised to provide evidence for more effective humanitarian planning. The following is based on 502 departures and 754 arrivals recorded from 1 to 28 December 2017.



GENERAL MOVEMENT TRENDS¹

Average daily number of individuals departing (red) and arriving (blue); January 2017 to December 2017.



DEPARTURES FROM NYAL

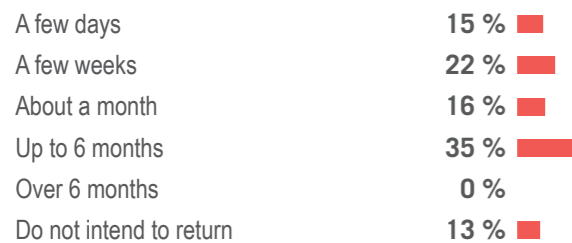
Demographic²

87% of the total departing respondents intended to leave Nyal for 6 months or less.



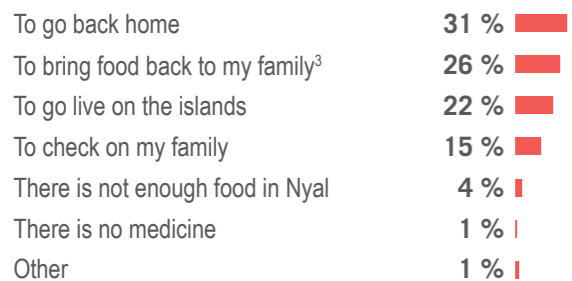
Intended duration of stay in destination

Reported length of time that IDPs intend to stay in the location that they are departing for:



Reason for leaving

Primary reported reason for leaving Nyal Town:



Changes in reason for leaving

Most prevalent primary reason for leaving Nyal:

	Sept 2017	Oct 2017	Nov 2017	Dec 2017
To bring food back to my family	13 %	55 %	21 %	26 %
To go back home	34 %	25 %	23 %	31 %
To go live on the islands	27 %	11 %	26 %	22 %
To go check on family living on the islands	23 %	8 %	18 %	15 %

Intended island destinations for departures

Island settlements most frequented from Nyal:



ARRIVALS TO NYAL

Demographic²

69% of the total arriving respondents expressed the intention to remain in Nyal for up to six months.



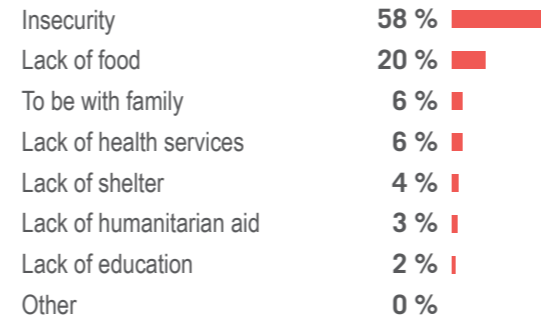
Reason for coming to Nyal

Primary reported reason for choosing to come to Nyal after being displaced:



Reason for leaving previous location

Primary reported reason for leaving previous location:



Changes in reason for coming to Nyal

Most prevalent primary reason for coming to Nyal:

	Sept 2017	Oct 2017	Nov 2017	Dec 2017
Personal security	61 %	48 %	44 %	61 %
Presence of food	9 %	20 %	14 %	7 %
Presence of health facilities	11 %	20 %	14 %	6 %
Presence of shelter	15 %	8 %	5 %	8 %

Intended duration of stay in Nyal

Reported length of time that respondents intended to stay in Nyal:



Note:

- These are indicative trends; REACH does not record all arrivals and departures.
- Men, women and children figures presented are percentiles of those departing / arriving.
- Includes three indicators: food received from WFP distributions, or from family and friends, or purchased.