

Rapid Response Mechanism (RRM): Central African Republic

#2

01 - 29 February 2024

Monthly factsheet

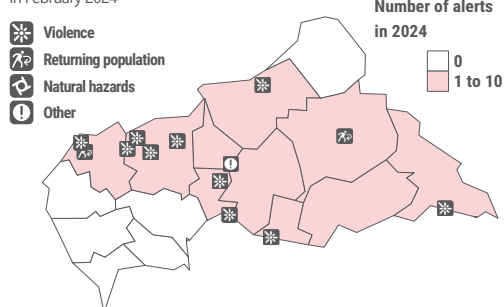


The Rapid Response Mechanism (RRM) is designed to monitor humanitarian situation in a context of sudden onset emergencies, conduct multisector assessments (MSAs) of needs and to provide various types of emergency assistance in order to save lives, including distribution of essential non-food items (NFIs) and high energy biscuits (HEBs), emergency water, sanitation and hygiene (WASH) interventions, as well as cash transfer programming (CTP). Currently, the RRM is made possible through the support of the United States Agency for International Development (USAID/BHA), the Directorate-General for European Civil Protection and Humanitarian Aid Operations (DG ECHO), the Swiss Agency for Development and Cooperation (SDC) and the Swedish International Development Cooperation Agency (SIDA). All RRM products are available on the [portal](#).

Alerts received or sent by the RRM in 2024

Alert distribution in February 2024 :

Location and types of alerts in February 2024



13 alerts

in February 2024

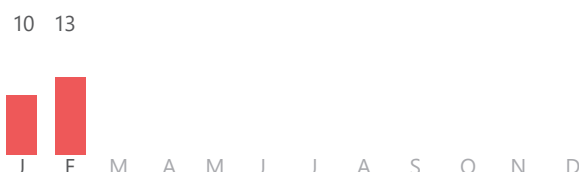
Median delay between alert and intervention¹: 14 days

Types of alerts in 2024:



Legend :
Violence
Returning
Natural hazards
Others

Number of alerts per month in 2024:

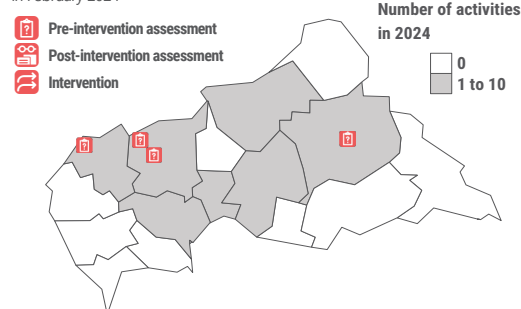


Overview of RRM activities in 2024¹

Activity distribution in February 2024 :

(MEX², MSAs, SMART³, NFI and HEB distributions, WASH interventions, CTP, PDM⁴)

Location and types of activities in February 2024



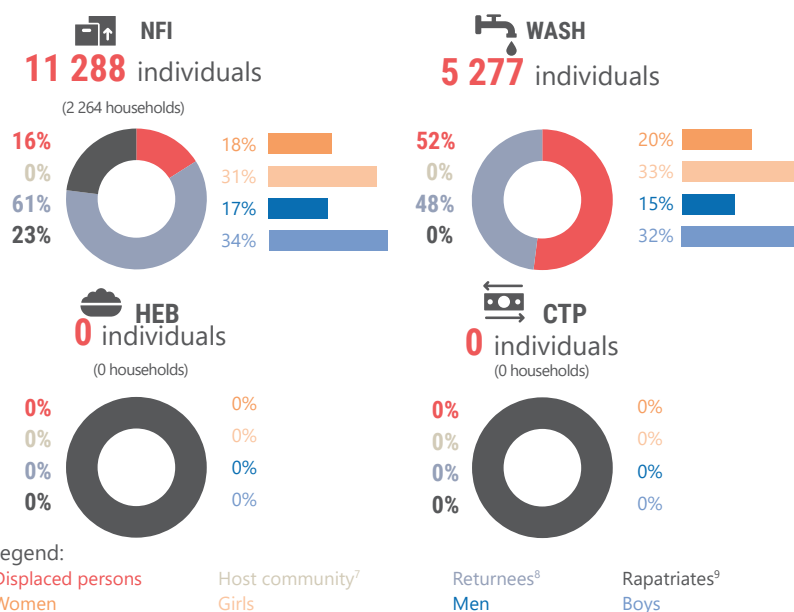
RRM activities in February 2024:



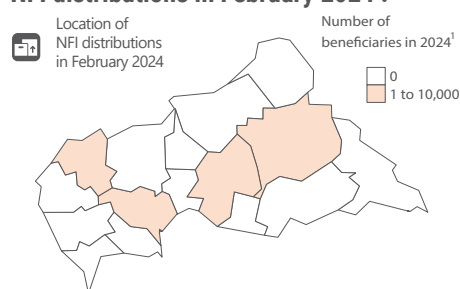
Activities in 2024 :

MEX ²	3	Cash distribution ⁵	0
MSAs ³	7	Sensitization sessions on hygiene	7
MSA-R ³	0	Emergency latrines	27
NFI distributions	6	Rehabilitations of water sources	7
WASH interventions	3	Distributed hygiene kits	1385
HEB distribution	0	PDM ⁴	0
Voucher distribution	0	Mixed distribution ³	0

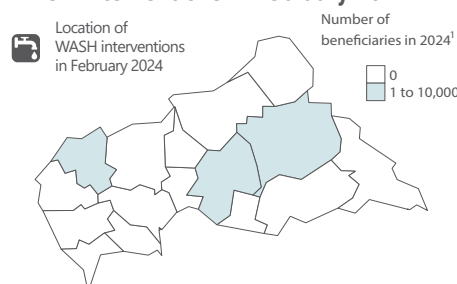
Cumulative beneficiaries in 2024¹



NFI distributions in February 2024 :



WASH interventions in February 2024 :



¹Assessments and interventions, which were not finished by the end of February 2024, are not included. ²Exploratory missions. ³Rapide multi-sector need assessment. ⁴In-kind and CTP. ⁵Post-distribution monitoring. ⁶MSA-R are not triggered following a RRM alert. MSA-R aim at gathering information on areas not recently affected and/or not recently accessed by humanitarian actors. ⁷The term 'host community' refers to individuals that have not been displaced as the result of a humanitarian-related event. ⁸The term 'returnees' refers to people who have come back to their pre-crisis location following a period of internal displacement. ⁹The term 'repatriates' refers to former refugees who have returned from neighbouring countries.

Pour plus d'information, veuillez contacter:
Chiefs Emergency & Field Ops:
Maria Agnese GIORDANO
mgiordano@unicef.org

Produced by:
REACH Informing more effective humanitarian action