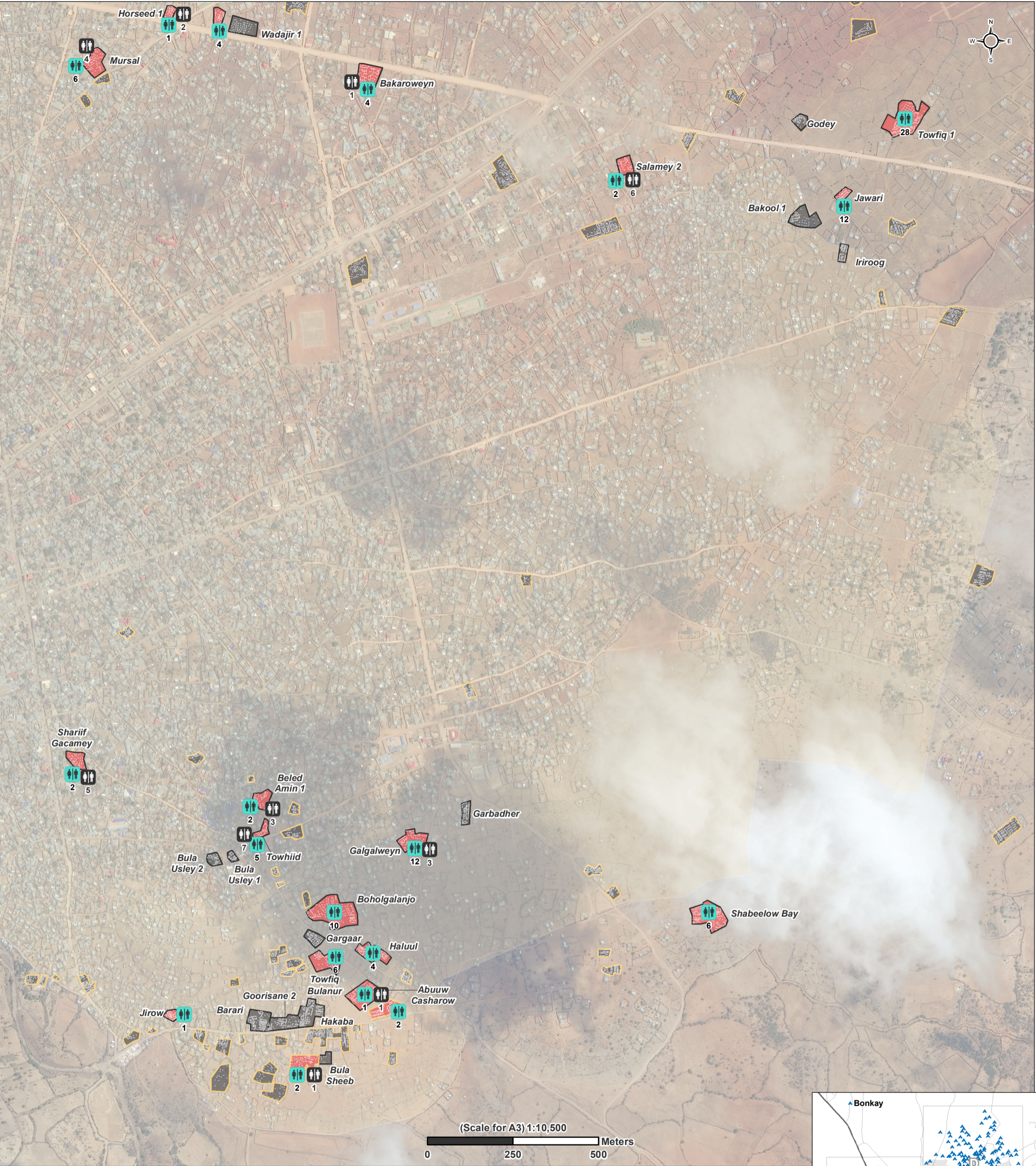


SOMALIA – Baidoa IDP Settlement Profiling

Baidoa B: Settlement population per latrine – April 2017

For Humanitarian Purposes Only
Production date: 19 June 2017



Structures

Shelters (6,053)

of latrines per settlements

Functioning latrines

Non functioning latrines

number of people per functioning latrine

> 20

No latrine

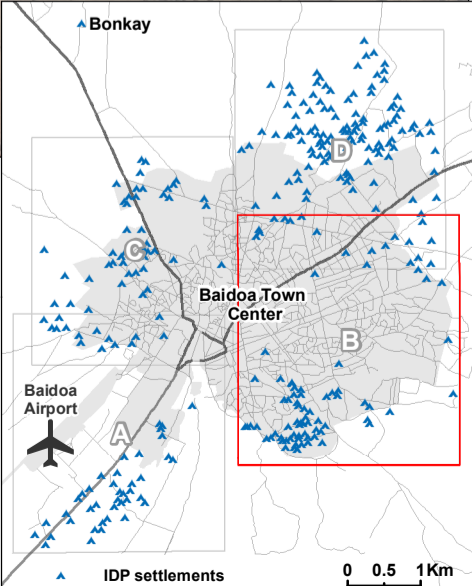
Boundaries

Assessed IDP settlements

Remotely identified IDP settlement (Not yet field validated)

Funded by
EUROPEAN COMMISSION
USAID
FROM THE AMERICAN PEOPLE

Data sources:
Settlements and Facilities: REACH field team
Imagery and Shelter points: UNOSAT 21APR2017
Administrative boundaries, Roads, Towns: UNDP
Coordinate System: WGS 1984 UTM Zone 38N
Contact: reach.mapping@impact-initiatives.org
File: reach_som_map_baidoa_b_idp_people_per_latrine_2017_a3
Note: Data, designations and boundaries contained on this map are not warranted to be error-free and do not imply acceptance by the REACH partners, associates, donors mentioned on this map.



Note: Data, designations and boundaries contained on this map are not warranted to be error-free and do not imply acceptance by the REACH partners, associated, donors mentioned on this map.