



IDP Camp Profile - Al Shahamah

Salah Al Din, Iraq
May 2017

Management agency: Government
Manager/Focal point: Hussein Ahmed Khalaf
Phone number: 7709595695
Email: n/a
Registration actor: Camp management

Summary

This profile provides an overview of conditions in Al Shahamah camp. Primary data was collected through household surveys on 23/5/17. Households were randomly sampled to a 95% confidence and 10% margin of error, based on population figures provided by CCCM. In some cases, additional information from camp managers has been used to support findings.

Camp Overview

of individuals: 2,576
of households: 495
Date opened: 4/1/2017
Occupied number: 700
Ongoing extension: No
Planned capacity: 1,750
Camp area: 160,899m²

Demographics

51% male / 49% female

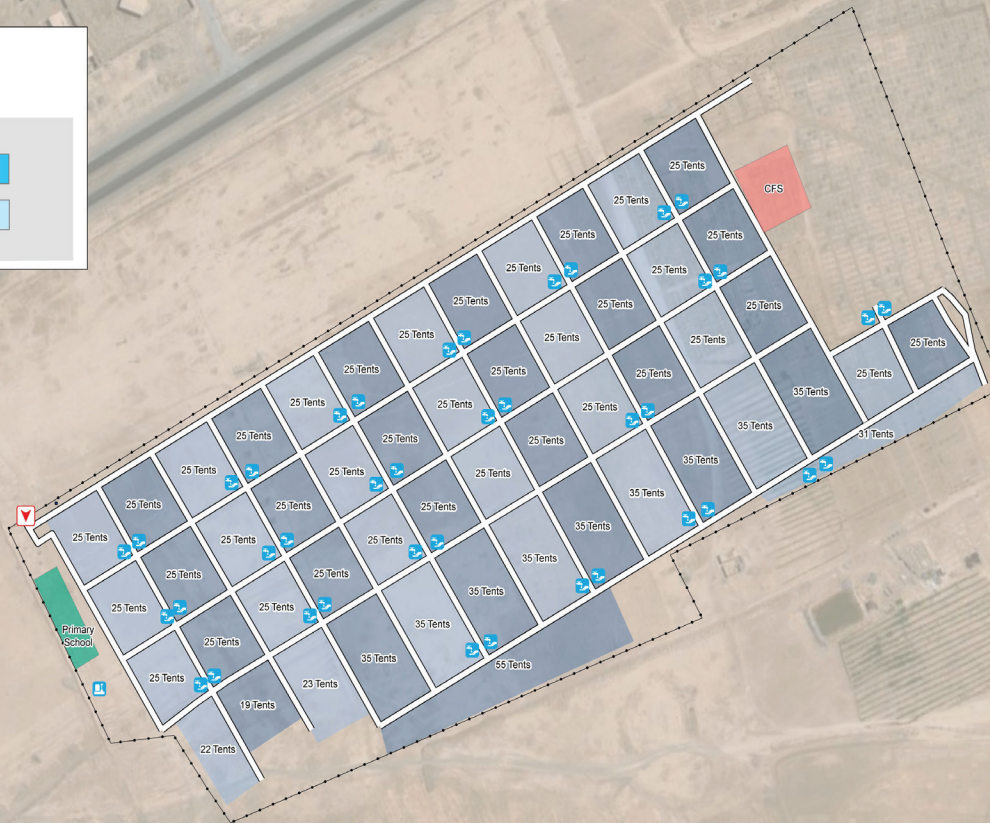
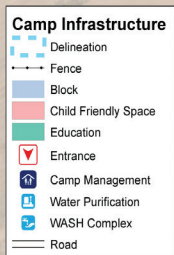
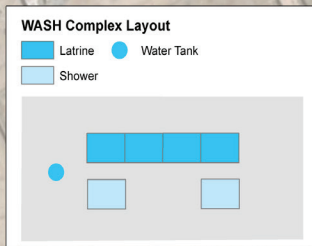
1% Over 60 1%
17% 18-59 19%
9% 12-17 7%
14% 6-11 14%
10% 0-5 8%

Location Map



IDP Camp Map - Al Shahamah

Lat.34° 41' 26.603" N Long. 43° 37' 8.739" E



Scale 1:200,000
0 20 40 80 120 Meters

Sectoral Minimum Standards

		Target	Previous Round	Current Round	Achievement
Education	% of children aged 6-11 attending formal school	100%	n/a	70%	●
	% of children aged 12-17 attending formal school	100%	n/a	86%	●
Food	% of households accessed Family Food Parcel or equivalent in the past month	100%	n/a	100%	●
Health	Health services are available on-site or within walking distance	Yes	n/a	Yes	●
CCCM	Average open area per household	min. 30m ²	n/a	254m ²	●
Protection	% of IDPs registered on an individual basis (MODM/DDM)	100%	n/a	66%	●
Shelter	Average covered area per person	min 3.5m ²	n/a	3.7m ²	●
	Average number of individuals per shelter	max 5	n/a	6	●
WASH	# of persons per latrine	max. 20	n/a	16	●
	# of persons per shower	max. 20	n/a	32	●
	Frequency of solid waste disposal at least weekly	Min. weekly	n/a	Yes	●

Targets based on minimum standards agreed with the CCCM Cluster, Iraq. Findings based on household-level data, enumerator field observations, and camp management documentation
● Minimum standard reached, ● More than 50% minimum standard reached, ● Less than 50% of minimum standard reached or not at all





IDP Camp Profile - Al Shahamah

Salah Al Din, Iraq
May 2017

Management agency: Government
Manager/Focal point: Hussein Ahmed Khalaf
Phone number: 7709595695
Email: n/a
Registration actor: Camp management

Shelter

Top observed shelter type

Tent 100%

Top reported needed shelter items

Tarpaulin 100%

Sun shading net 100%

Timber 97%

Top reported needed basic items

Kerosene gas stove 87%

Mattresses 85%

Cooking fuel 76%

Top reported needed winter item

Kerosene 42%

Top reported needed summer item

Rechargeable fan 99%

Food Security

Reported access to food assistance

63% accessed food assistance in past month

52% received Public Distribution System (PDS) in past month

Top three food consumption coping strategies

Cheaper food 63%

Borrowed food 48%

Eat fewer meals 48%

WASH

Latrines and showers

0% reported public or communal latrines

100% public/communal latrines lockable from the inside

1% public/communal latrines with functioning lighting

Top three reported methods of waste removal

Collected 100%

n/a n/a

n/a n/a

Reported drinking water sources

0% connection inside the home to collective water storage

0% connection inside the home to private water storage

100% communal water tap outside the shelter

Access to water

3% reported 24 consecutive hours without access to water in the past month

Community Organisation

IDP committees

100% reported awareness of IDP committee(s)

Complaints mechanism

35% made a complaint about conditions or assistance

Protection

Family Separation

1% reported hosting unaccompanied or separated minors

20% reported that other family members intended to join them

Vulnerable groups

Pregnant / lactating women 4%

Chronically ill individual(s) 6%

Disabled individual(s) 6%

Female headed households 20%

Intentions

20% planned to move to a different location in next 3 months

Restrictions

100% reported being able to leave the camp temporarily (e.g. to go to the market, for livelihood opportunities)

Livelihoods

27% reported as being economically inactive

Top three income sources*:

Government aid 58%

Humanitarian aid 58%

Unskilled labour 10%

*Households were asked to select all income sources within household.

Top three reported livelihood coping strategies

Sold assistance 73%

Selling assets 34%

Charitable donations 26%

