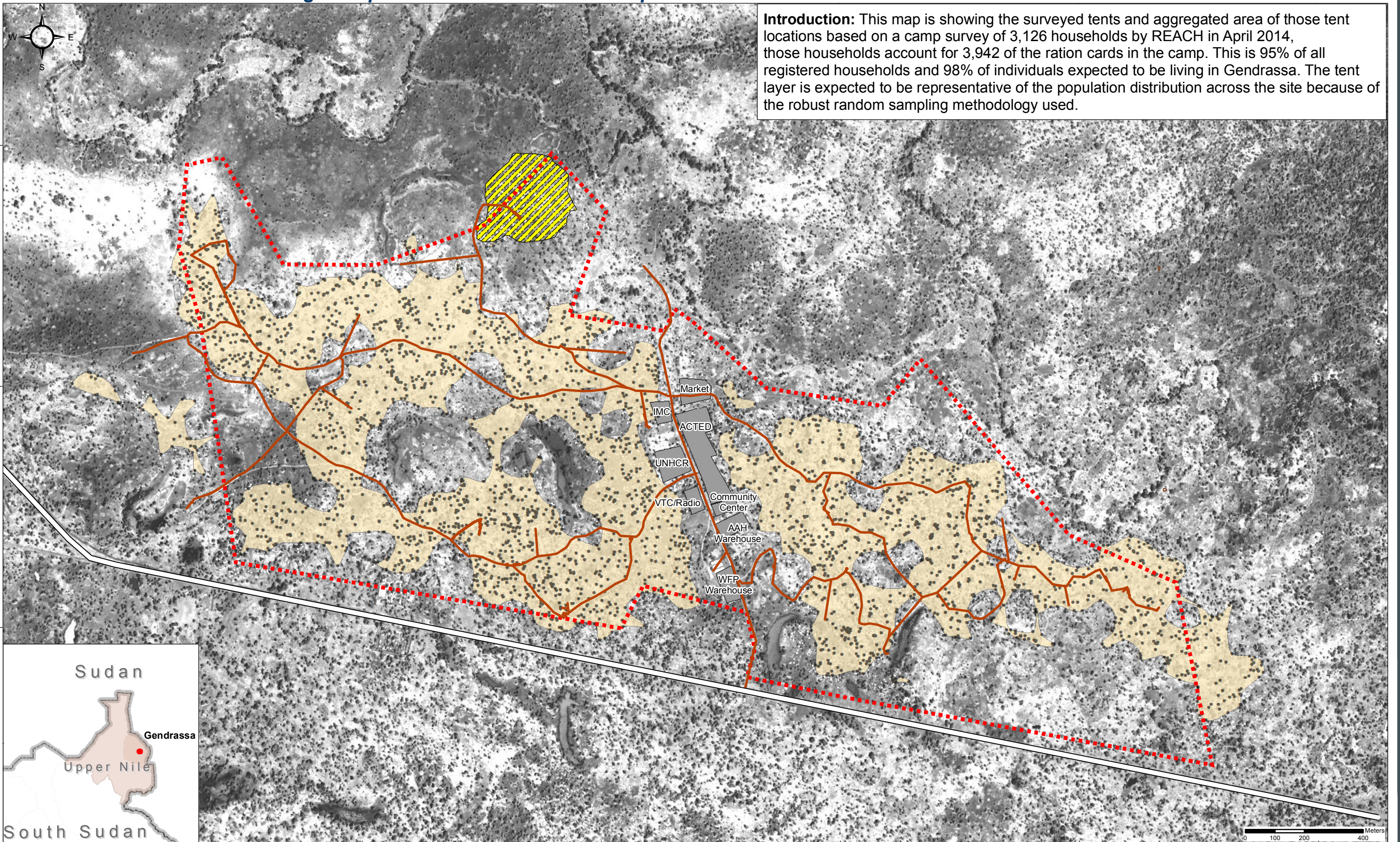


**Introduction:** This map is showing the surveyed tents and aggregated area of those tent locations based on a camp survey of 3,126 households by REACH in April 2014, those households account for 3,942 of the ration cards in the camp. This is 95% of all registered households and 98% of individuals expected to be living in Gendrassa. The tent layer is expected to be representative of the population distribution across the site because of the robust random sampling methodology used.



- Camp Boundary
- NGO Compounds and Market
- Refugee Populated Area
- Relocated Jumjum Population
- Surveyed Tents
- Internal Maram Road
- Main Road

Data Sources: Vector Data - REACH (Shelter Data, Water Data, Camp Boundary)  
Satellite Image: Digitalglobe Worldview-2 (December, 2013)  
Coordinate System: GCS WGS 1984  
Contact: reach.mapping@impact-initiatives.org  
File: SSD\_CCM\_Gendrassa\_14May2014\_A3

Note: Data, designations and boundaries contained on this map are not warranted to be error-free and do not imply acceptance by REACH or the partners mentioned on this map.

The view expressed in this document are solely the responsibility of REACH. The document should not be taken, in any way, to reflect the official position of the donors

Funded by:



Funding Provided  
by the  
United States  
Government



Humanitarian Aid  
and Civil Protection