

Daynile IDP Settlements Overview

Mogadishu, Banaadir, Somalia
January 2016

Somalia Displacement Crisis



Humanitarian Aid
and Civil Protection

Background and Methodology

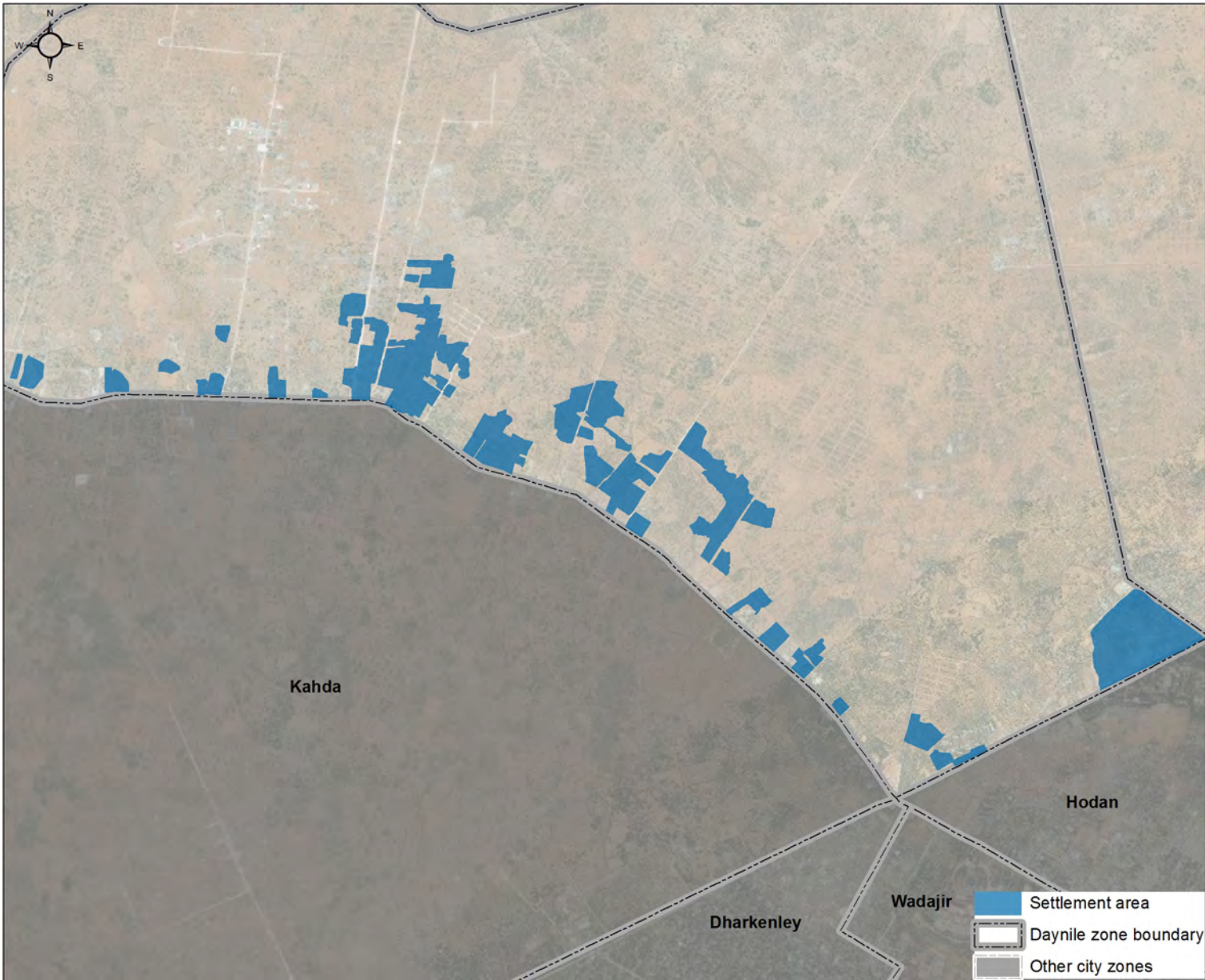
This factsheet presents preliminary findings from an assessment of informal settlements where Internally Displaced Persons (IDPs) reside in Mogadishu. As there are no formal IDP settlements within Somalia, settlements are interspersed with host community members, refugees, economic migrants, etc. This factsheet highlights findings from IDP, economic migrant and host community households within the settlement boundaries. 142 settlements were assessed between August and December 2015, as part of a joint IDP profiling exercise.

This factsheet presents findings from Daynile, one of 16 assessed zones of IDP settlements. Areas were selected based on geographic proximity and relevant umbrella structures. The zonal distributions should in no way be seen as formal designations of administrative boundaries. Information is based on a full household enumeration

and 2,696 facilities mapped. Facility mapping was conducted by REACH through direct observations, facility management interviews and collection of GPS coordinates. Household data was collected with support from IOM, DRC, NRC, UNHCR, Save the Children, HINNA, Elman, DBG, DMA, BRA, UNICEF, UNOCHA, REACH, SSWC, Mercy Corps, Concern and ORDO.

The information presented in the factsheet was collected on behalf of the humanitarian community in order to better understand the needs, vulnerabilities and intentions of IDPs in these communities. Indicators measured were chosen in coordination with relevant clusters, with targets according to minimum humanitarian standards. This factsheet should be read together with factsheets for the other assessed zones and is accompanied by a profiling report produced by JIPS and the Somalia Protection Cluster.

Settlement perimeters in Daynile



Data, designations and boundaries contained on this map are not warranted to be error-free and do not imply acceptance by the REACH partners, associates, donors or any other stakeholder mentioned on this map.

Overview

Number of settlements	142
Number of households in settlements	18,467
Total area of settlements	1,526,924 m²
Population of assessed settlements in zone	
IDP	92,618
Economic migrant	6,565
Host community	160

Location Map



Service Overview

Kiosks and markets	Target*	Achieved	
% of households within 5km of a kiosk	100%	100%	●
% of households within 5km of a market	100%	100%	●
% of settlements with a kiosk and/or market open at night	100%	46%	●
Community and Security			
% of settlements with at least one community centre within the settlement area	100%	8%	●
% settlements with at least one police post within the settlement area	100%	0%	●
Health			
% of households with access to health facilities within 5km	100%	100%	●
% of settlements with nutrition services available within the settlement area	100%	1%	●
% of children having received poliomyelitis vaccination	90%	55%	●
% of children having received measles vaccination	90%	53%	●
% of children having received Diphtheria, Typhoid and Pertussis (DTP) vaccination	90%	48%	●
% of children having received Bacille Calmette-Guerin (BCG)	90%	47%	●
Education			
% of schools meeting minimum teacher to student ratio (1:45)	100%	74%	●
% Children aged 5-12 enrolled in primary school (male/ female)	100%	36% / 31%	●
% Children aged 13-17 enrolled in secondary school (male/ female)	100%	47% / 39%	●
Shelter			
% Shelters with a lockable door	100%	86%	●
% Shelters with an electricity supply	100%	3%	●
WASH			
% of households within 500m of a waterpoint	100%	100%	●
# individuals per latrine	max. 20	60	●
% of households with access to a latrine lockable from the inside	100%	76%	●
% of households with access to a latrine 24 hours a day	100%	87%	●

*Targets are based on Sphere and UNHCR minimum standards ● Target reached , ● Target more than 50% reached, ● Target less than 50% or not at all reached, ● Not applicable

Daynile IDP Settlements Overview

Mogadishu, Banaadir, Somalia
January 2016

Somalia Displacement Crisis



Humanitarian Aid
and Civil Protection

Key concerns

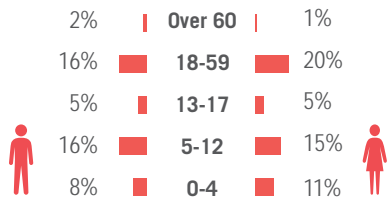
Daynile, on the north-west exit route from Mogadishu city centre, is a recently incorporated zone into the municipality. Like the neighbouring Kahda zone it has become a major centre for IDP settlements.

As with most zones hosting IDPs in Mogadishu, WASH is a key concern. Settlements often lack sufficient latrines to cover the whole population of settlements – only 10 of the 142 settlements in Daynile meet the Sphere standard of 20 people per latrine.

Of particular concern is the vaccination coverage reported by households interviewed. Under 80% of individuals were reported to have received vaccinations for polio or measles, and under 70% reported receiving the DTP or BCG vaccinations. This drops even more considerably among children under 15 years – under 60% for all vaccinations, as shown in the Service Overview. While Somalia is currently considered polio free the possibility of carriers travelling to the country is a risk given the insurgency in areas of south-central Somalia, including Mogadishu.

Demographics

48% male / 52% female | # children 0-17: 61,438



WASH

Main source of drinking water	Borehole (65%)
Households who treat drinking water	46%
Primary waste disposal	Burning (50%)

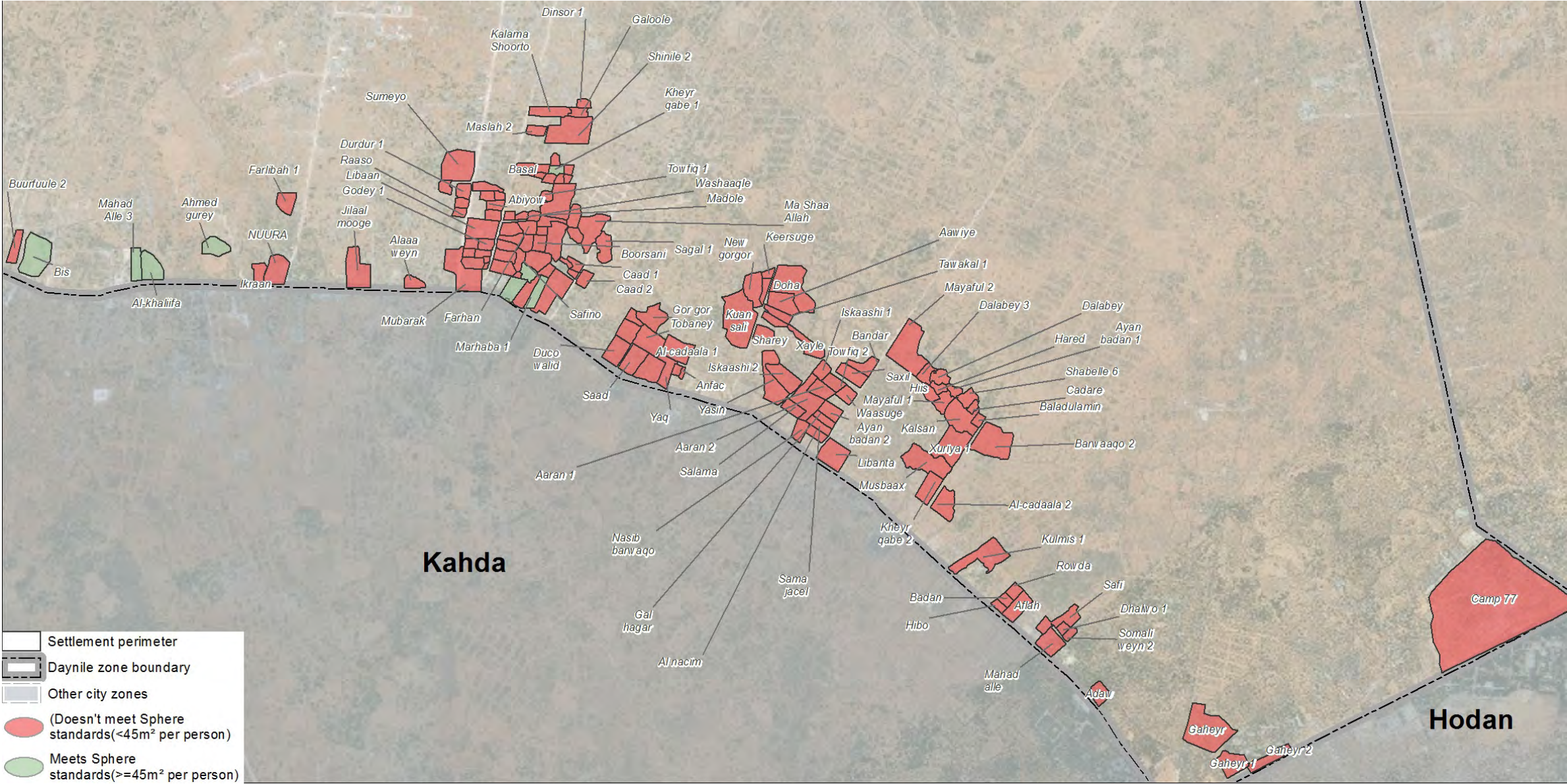
Displacement

Primary region of origin	Lower Shabelle (54%)
Secondary region of origin	Bay (22%)
Average date of departure from area of origin	2010
Average arrival date in Mogadishu	2013
Primary reason for leaving area of origin	Conflict (41%)
Secondary reason for leaving area of origin	Natural disaster (38%)
Primary reason for coming to Mogadishu	Livelihood opportunities (32%)
Secondary reason for coming to Mogadishu	Security (18%)

Shelter and settlement

Primary Shelter type	Hut (87%)
Primary wall materials	Clothes and wood (87%)
Households with no tenancy agreement	95%
Households previously evicted	32%
Households expecting eviction within 6 months	29%
Primary action if evicted	Move to another settlement (74%)

Surface area per person in Daynile zone



Livelihoods

Employment rate (Male/ Female 18-59 years)	77% / 82%
Primary work	Daily labour (45%)
Primary sector	Small service (28%)
Secondary sector	Construction (17%)

Vulnerability

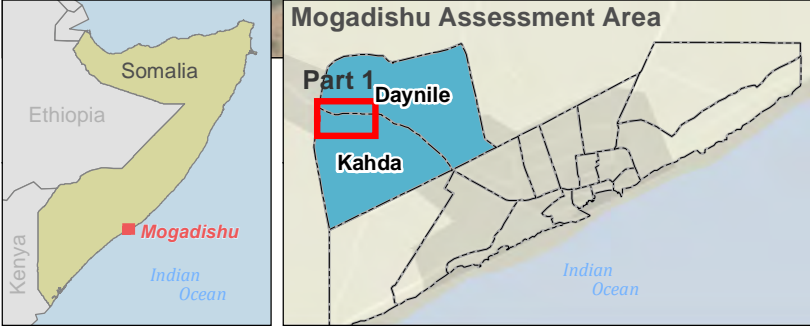
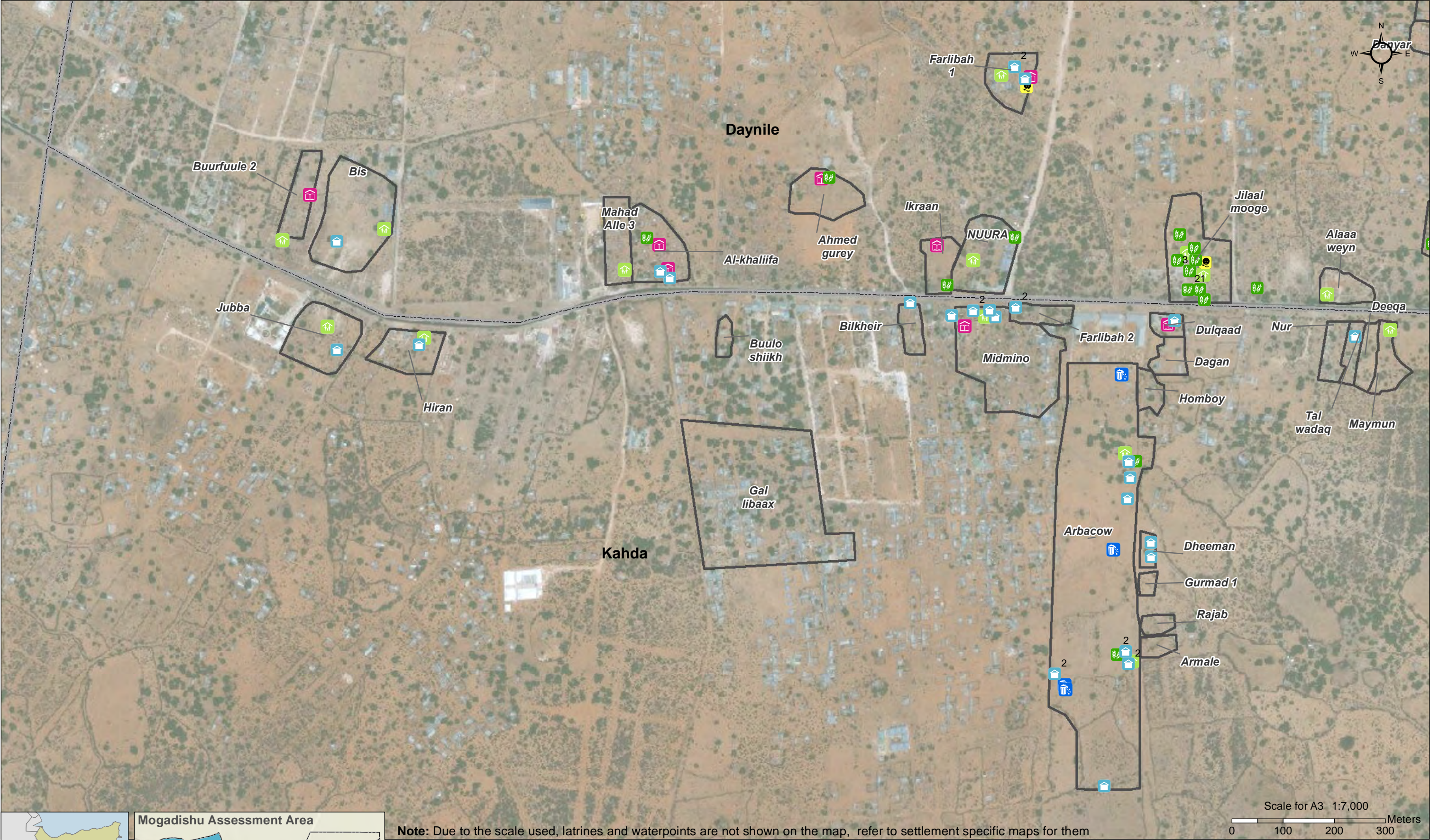
Proportion of Individuals with specific needs:	
Unaccompanied/ separated minors	2%
Members with physical disabilities	4%
Members with mental disabilities	2%
Pregnant and lactating women	5%
Suffer chronic illness	4%
Proportion of households with specific needs:	
Female headed households	16%
Child headed households	0%

SOMALIA - Mogadishu IDP Profile, October 2015

Daynile/Kahda District – Settlements and Facilities (Part 1)



For Humanitarian Purposes Only
Production date: 26 January 2016



Note: Due to the scale used, latrines and waterpoints are not shown on the map, refer to settlement specific maps for them

Facilities

- | | |
|-------------------------------|-------------|
| Community Centre (14) | Market (16) |
| Garbage collection point (4) | School (8) |
| Health Nutrition Facility (2) | Kiosk (24) |

(7) Number of facility count

Mogadishu city zones

- | |
|-----------------------|
| Daynile zone boundary |
| Other city zones |

IDP settlements

- | |
|---------------------------|
| Settlement perimeter (32) |
|---------------------------|

Data Sources:
Settlements and assessment data: REACH - October 2015
Administrative units: OCHA COD, 2015
Imagery: ESRI base layers
Coordinate System: GCS WGS 1984
Contact: reach.mapping@impact-initiatives.org
File: REACH_SOM_Map_Mogadishu_IDP_Profile_Daynile_Kahda_Part1_facilities_05NOV2015_A3

Contributing partners:
IOM DRC NRC UNHCR Save the Children HINNA Elman DBG DMA BRA UNICEF
UNOCHA REACH SSWC Mercy Corps Concern ORDO



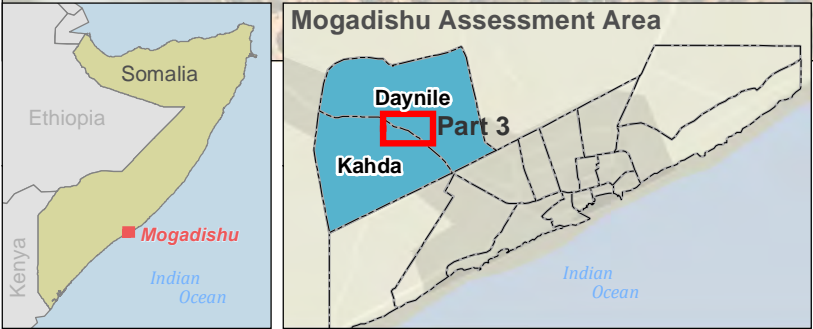
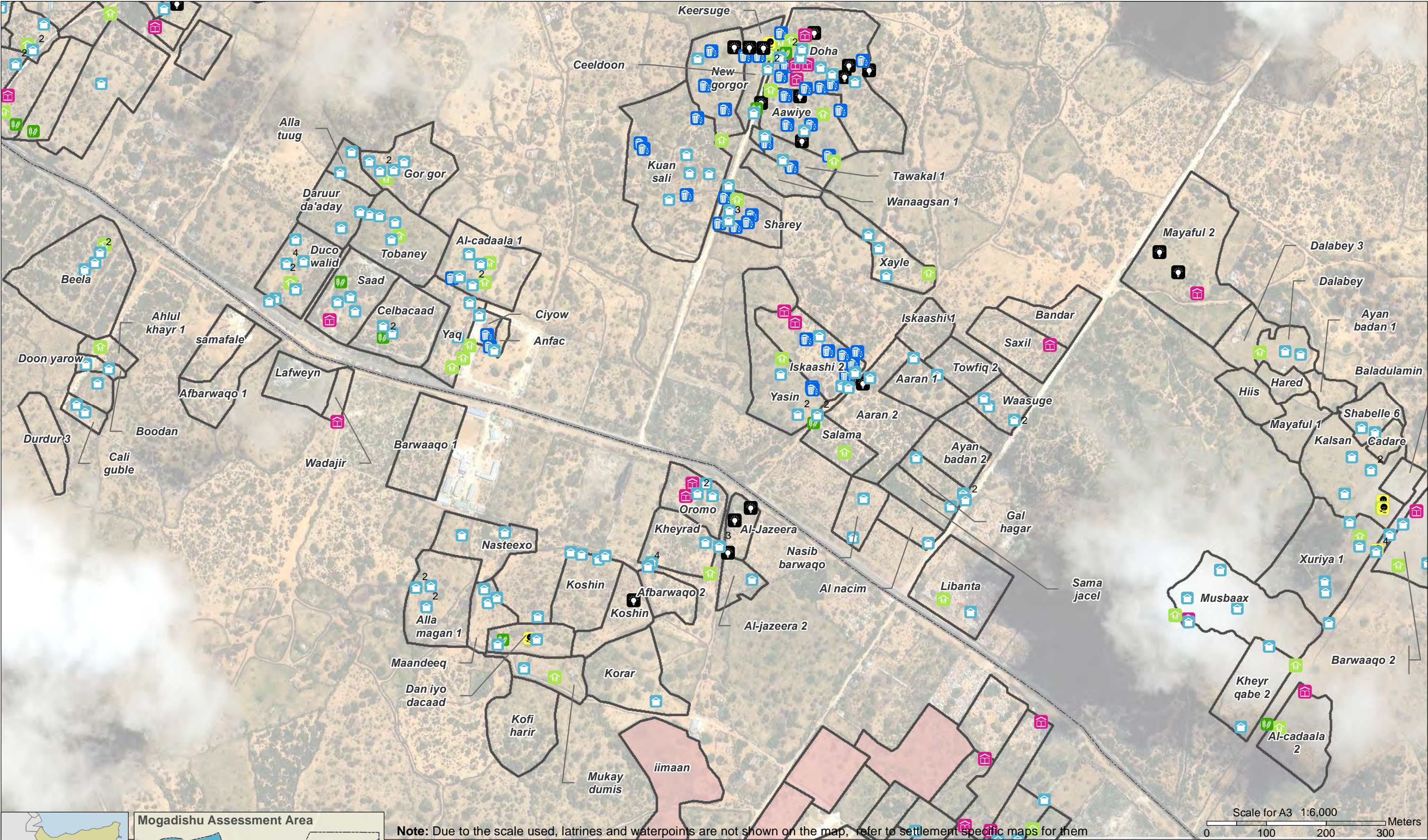
Note: Data, designations and boundaries contained on this map are not warranted to be error-free and do not imply acceptance by the REACH partners, associates, donors or any other stakeholder mentioned on this map.

SOMALIA - Mogadishu IDP Profile, October 2015

Daynile/Kahda District – Settlements and Facilities (Part 3)



For Humanitarian Purposes Only
Production date: 26 January 2016



Facilities

- Community Centre (36)
- Garbage collection point (39)
- Health Nutrition Facility (5)

(7) Number of facility count

- Market (9)
- School (21)
- Kiosk (139)
- Solar lighting post (19)

Mogadishu city zones

Daynile zone boundary

Other city zones

IDP settlements

Settlement perimeter (106)

No facility information (4)

Data Sources:
Settlements and assessment data: REACH - October 2015
Administrative units: OCHA COD, 2015
Imagery: ESRI base layers
Coordinate System: GCS WGS 1984
Contact: reach.mapping@impact-initiatives.org
File: REACH_SOM_Map_Mogadishu_IDP_Profile_Daynile_Kahda_Part3_facilities_05NOV2015_A3

Contributing partners:

IOM DRC NRC UNHCR Save the Children HINNA Elman DBG DMA BRA UNICEF UNOCHA REACH SSWC Mercy Corps Concern ORDO

Funded by



Humanitarian Aid
and Civil Protection

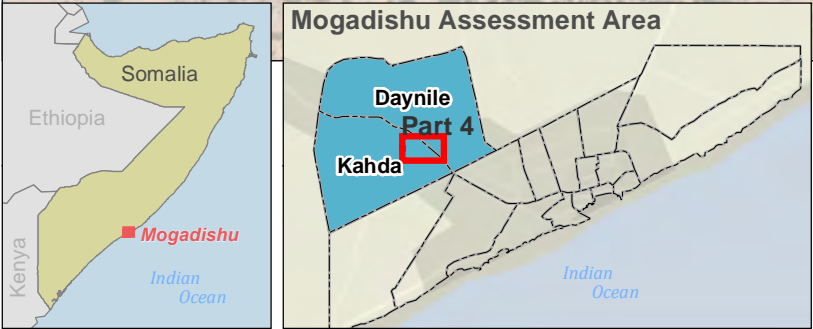
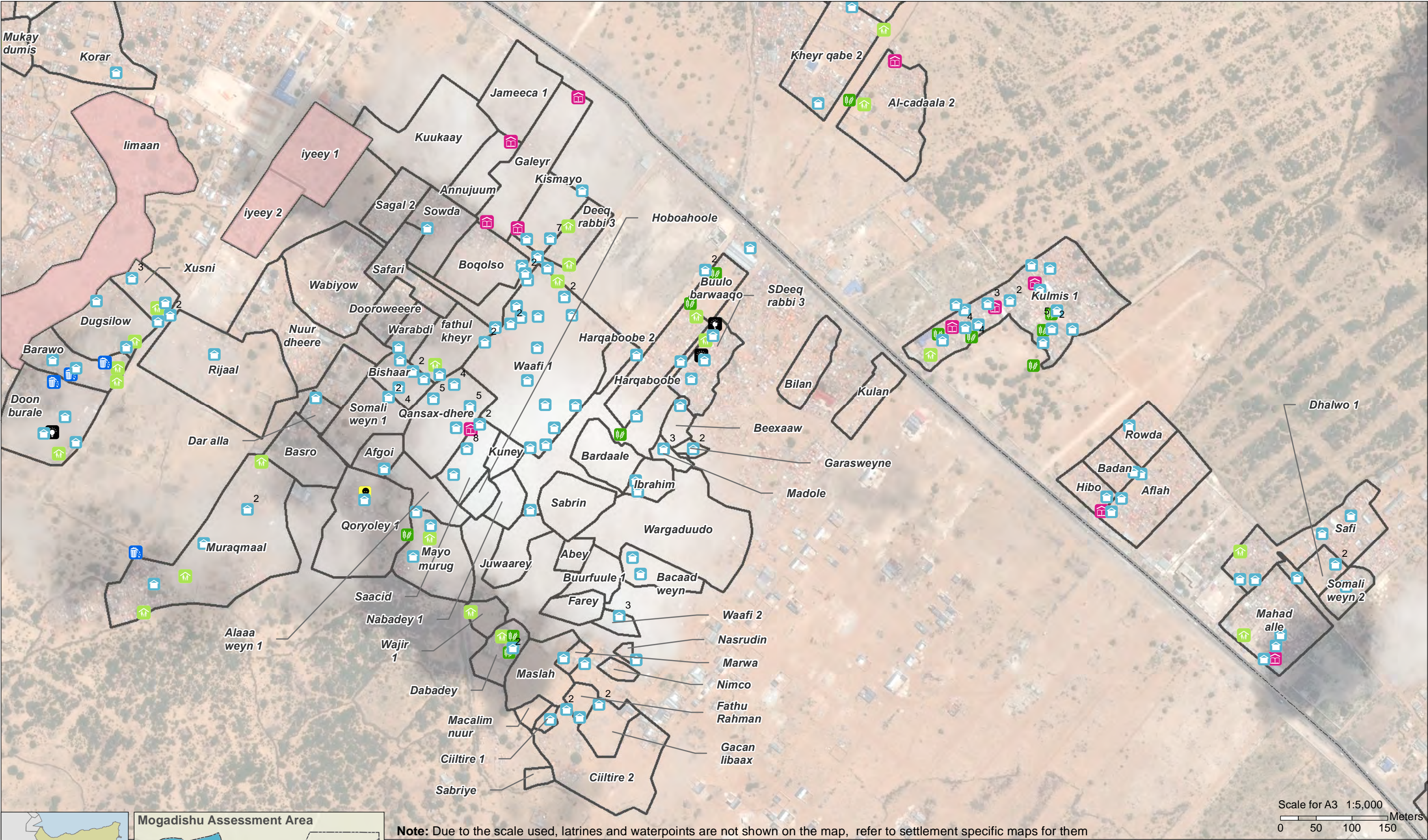
Note: Data, designations and boundaries contained on this map are not warranted to be error-free and do not imply acceptance by the REACH partners, associates, donors or any other stakeholder mentioned on this map.

SOMALIA - Mogadishu IDP Profile, October 2015

Daynile/Kahda District – Settlements and Facilities (Part 4)



For Humanitarian Purposes Only
Production date: 26 January 2016



Note: Due to the scale used, latrines and waterpoints are not shown on the map, refer to settlement specific maps for them

Facilities

- Community Centre (23)
- Garbage collection point (4)
- Health Nutrition Facility (2)
- Market (12)
- School (11)
- Kiosk (117)
- Solar lighting post (3)

(7) Number of facility count

Mogadishu city zones

- Daynile zone boundary
- Other city zones

IDP settlements

- Settlement perimeter (86)
- No facility information (3)

Data Sources:
Settlements and assessment data: REACH - October 2015
Administrative units: OCHA COD, 2015
Imagery: ESRI base layers
Coordinate System: GCS WGS 1984
Contact: reach.mapping@impact-initiatives.org
File: REACH_SOM_Map_Mogadishu_IDP_Profile_Daynile_Kahda_Part4_facilities_05NOV2015_A3

Contributing partners:
IOM DRC NRC UNHCR Save the Children HINNA Elman DBG DMA BRA UNICEF
UNOCHA REACH SSWC Mercy Corps Concern ORDO

Funded by



Humanitarian Aid
and Civil Protection

REACH
An initiative of
IMPACT INITIATIVES
ACTED and UNOSAT

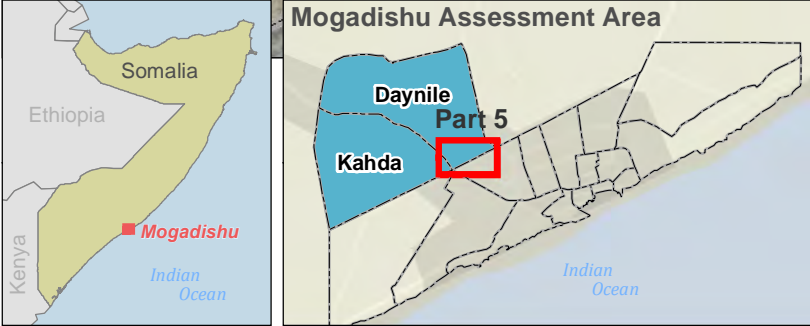
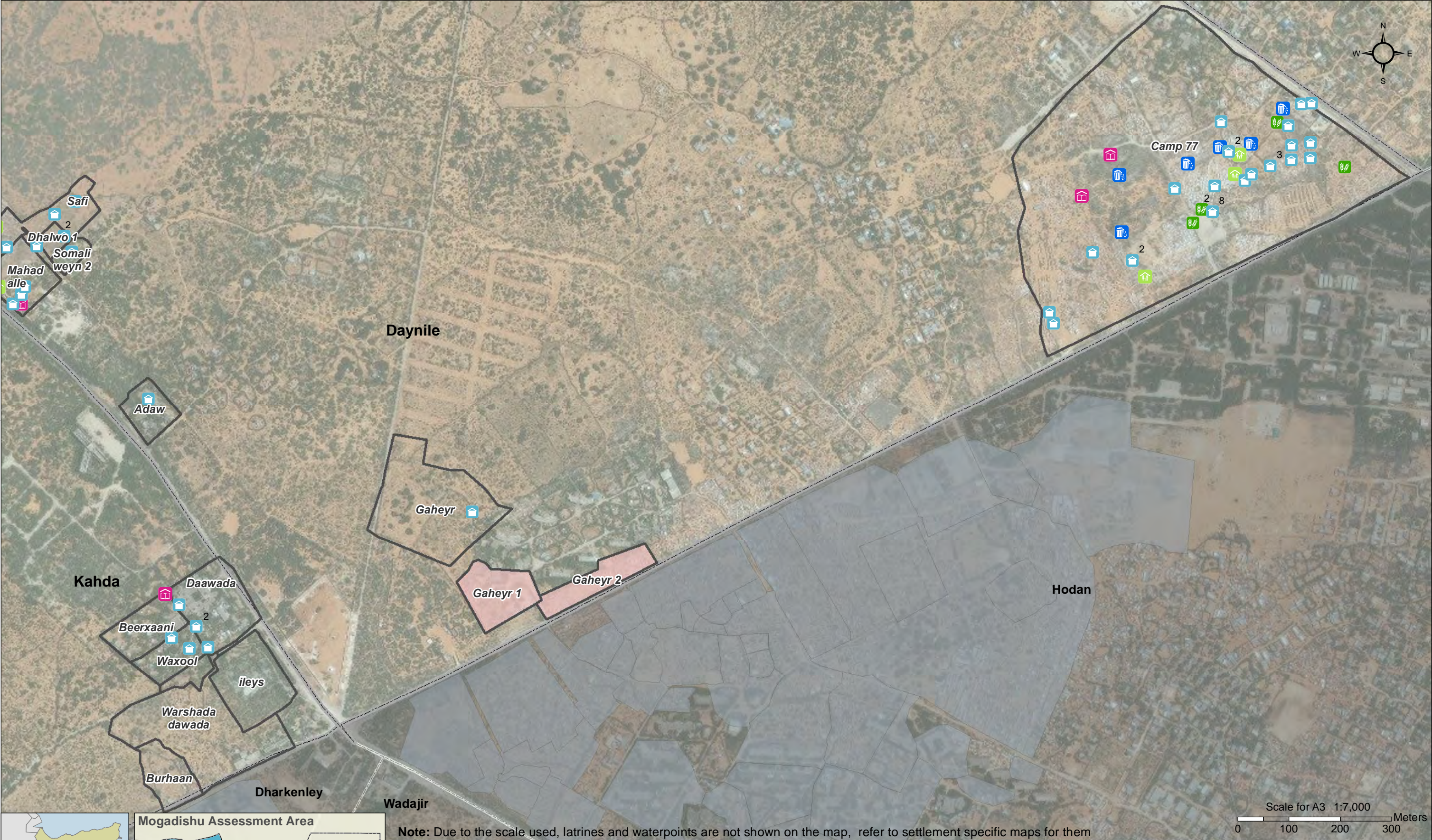
Note: Data, designations and boundaries contained on this map are not warranted to be error-free and do not imply acceptance by the REACH partners, associates, donors or any other stakeholder mentioned on this map.

SOMALIA - Mogadishu IDP Profile, October 2015

Daynile/Kahda District – Settlements and Facilities (Part 5)



For Humanitarian Purposes Only
Production date: 26 January 2016



Note: Due to the scale used, latrines and waterpoints are not shown on the map, refer to settlement specific maps for them

Facilities

- Community Centre (5)
- School (4)
- Garbage collection point (6)
- Kiosk (36)
- Market (4)

Mogadishu city zones

- Daynile zone boundary
- Other city zones

IDP settlements

- Settlement perimeter (15)
- No facility information (2)
- Other IDP settlements outside the district

(7) Number of facility count

Data Sources:
Settlements and assessment data: REACH - October 2015
Administrative units: OCHA COD, 2015
Imagery: ESRI base layers
Coordinate System: GCS WGS 1984
Contact: reach.mapping@impact-initiatives.org
File: REACH_SOM_Map_Mogadishu_IDP_Profile_Daynile_Kahda_Part5_facilities_05NOV2015_A3

Contributing partners:
IOM DRC NRC UNHCR Save the Children HINNA Elman DBG DMA BRA UNICEF UNOCHA REACH SSWC Mercy Corps Concern ORDO

Funded by

Humanitarian Aid and Civil Protection

Note: Data, designations and boundaries contained on this map are not warranted to be error-free and do not imply acceptance by the REACH partners, associates, donors or any other stakeholder mentioned on this map.