

# DAMAGE ASSESSMENT OF ALEPPO, ALEPPO GOVERNORATE, SYRIA

Analysis with Pleiades Data Acquired 01 May 2015, 26 April 2015 and WorldView-2 Data Acquired 23 May 2014, 23 September 2013, and 21 November 2010

This map illustrates satellite-detected damage in a portion of the city of Aleppo, Syrian Arab Republic. Using satellite imagery acquired 01 May 2015, 26 April 2015, 23 May 2014, 23 September 2013, and 21 November 2010, UNITAR - UNOSAT identified a total of 5,170 affected structures within the extent of this map. Approximately 904 of these were destroyed, 2,641 severely damaged, and 1,625 moderately damaged. The city-wide analysis of Aleppo revealed a total of 14,034 affected structures,

of which 2,878 were destroyed, 6,879 severely damaged, and 4,277 moderately damaged. While much of the city was damaged by 23 May 2014, 5,567 structures were newly damaged and 90 structures experienced an increase in damage between that date and 01 May 2015. This analysis was done of the REACH initiative for the U.S. Office of Foreign Disaster Assistance. This is a preliminary analysis and has not yet been validated in the field. Please send ground feedback to UNITAR - UNOSAT.

**Complex Emergency**



Production Date: 7/10/2015

Version 1.0

Activation Number: CE20130604SYR



**LEGEND**

- Destroyed
- Severely Damaged
- Moderately Damaged
- Highway / Primary Road
- Secondary Road
- Local / Urban Road

Map Scale for A3: 1:20,000  
0 125 250 500 Meters

Satellite Data (1): Pleiades  
Imagery Dates: 01 May 2015 & 26 April 2015  
Resolution: 50 cm  
Copyright: © CNES (2015), Distribution AIRBUS DS  
Source: Airbus Defense and Space  
Satellite Data (2): WorldView-2  
Imagery Date: 23 May 2014, 23 September 2013 & 21 November 2010  
Resolution: 50 cm  
Copyright: DigitalGlobe  
Source: European Space Imaging  
Road Data: Google Map Maker / OSM / ESRI  
Other Data: USGS, UNCS, NASA, NGA  
Analysis: UNITAR / UNOSAT  
Production: UNITAR / UNOSAT  
Analysis conducted with ArcGIS v10.3

Coordinate System: WGS 1984 UTM Zone 37N  
Projection: Transverse Mercator  
Datum: WGS 1984  
Units: Meter

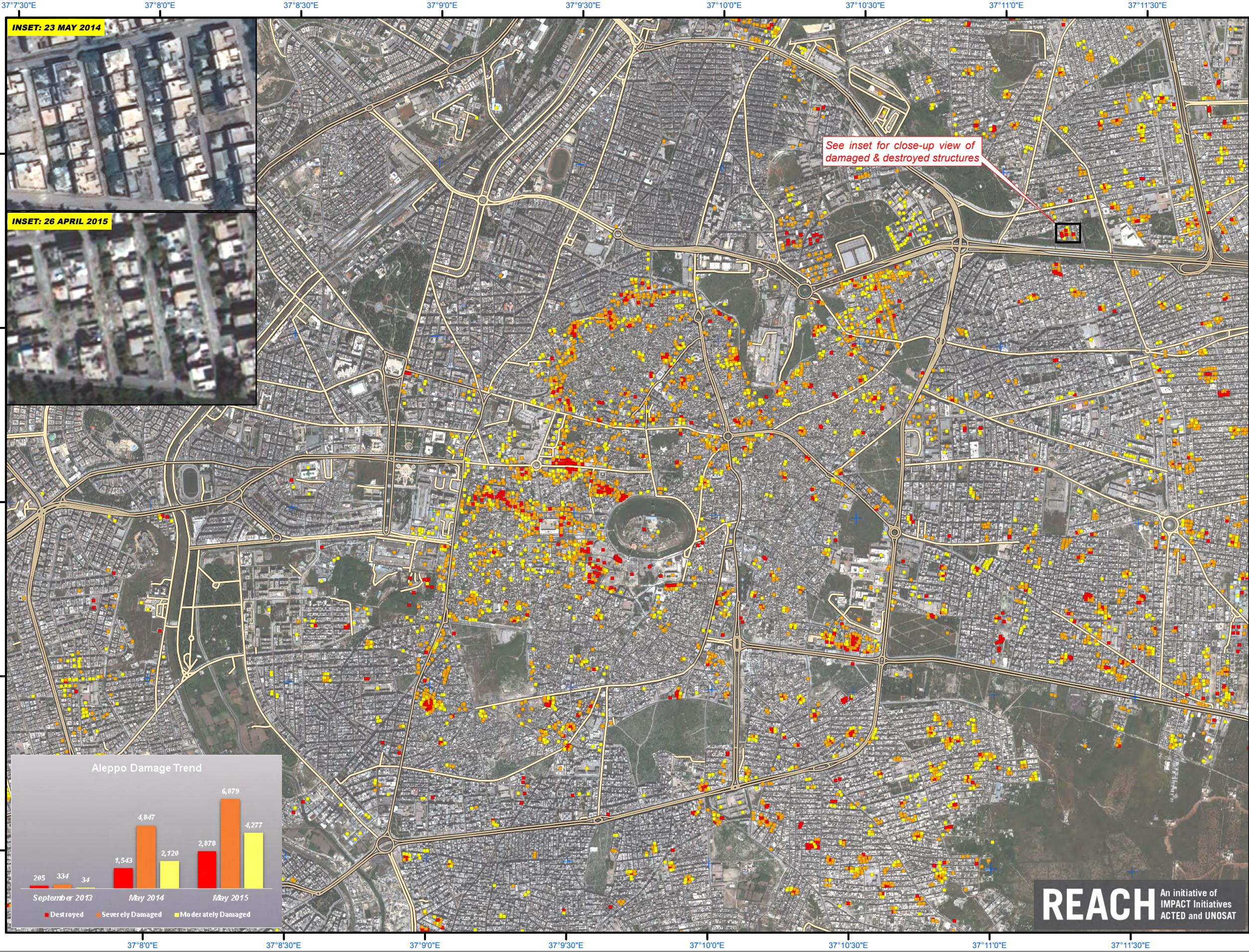
The depiction and use of boundaries, geographic names and related data shown here are not warranted to be error-free nor do they imply official endorsement or acceptance by the United Nations. UNOSAT is a program of the United Nations Institute for Training and Research (UNITAR), providing satellite imagery and related geographic information, research and analysis to UN humanitarian and development agencies and their implementing partners.

This work by UNITAR/UNOSAT is licensed under a Creative Commons Attribution-NonCommercial-ShareAlike 3.0 Unported License.

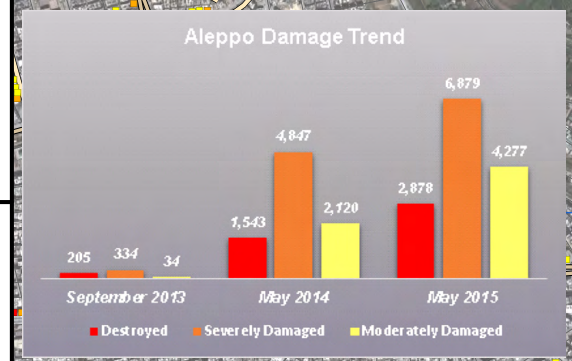


**UNOSAT**

Contact Information: [unosat@unitar.org](mailto:unosat@unitar.org)  
24/7 Hotline: +41 76 487 4998  
[www.unitar.org/unosat](http://www.unitar.org/unosat)



See inset for close-up view of damaged & destroyed structures



**REACH** An initiative of IMPACT Initiatives ACTED and UNOSAT