

DAMAGE ASSESSMENT OF DARAA, DARAA GOVERNORATE, SYRIA

Analysis with Pleiades, WorldView-2 and WorldView-1 Data Acquired 16 April 2016, 04 June 2015, 01 May 2014, 07 September 2013 and 14 December 2010

This map illustrates satellite-detected damage in the city of Daraa, Syrian Arab Republic. Using satellite imagery acquired 16 April 2016, 04 June 2015, 01 May 2014, 07 September 2013, and 14 December 2010, UNITAR - UNOSAT identified a total of 1206 affected structures within the extent of this map. The city-wide analysis of Daraa revealed a total of 1206 affected structures, of which 223 were destroyed, 411 severely damaged, and 572 moderately damaged.

Trend analysis shows an increase in the number of damaged structures since 04 June 2015 and approximately 200 structures are newly damaged. This analysis was done with the REACH initiative for the U.S. Office of Foreign Disaster Assistance. This is a preliminary analysis and has not yet been validated in the field. Please send ground feedback to UNITAR - UNOSAT.

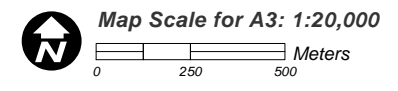
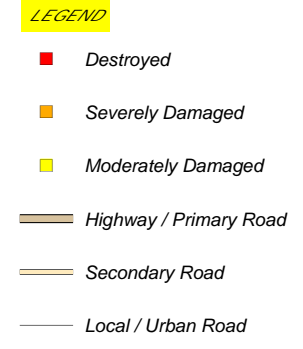
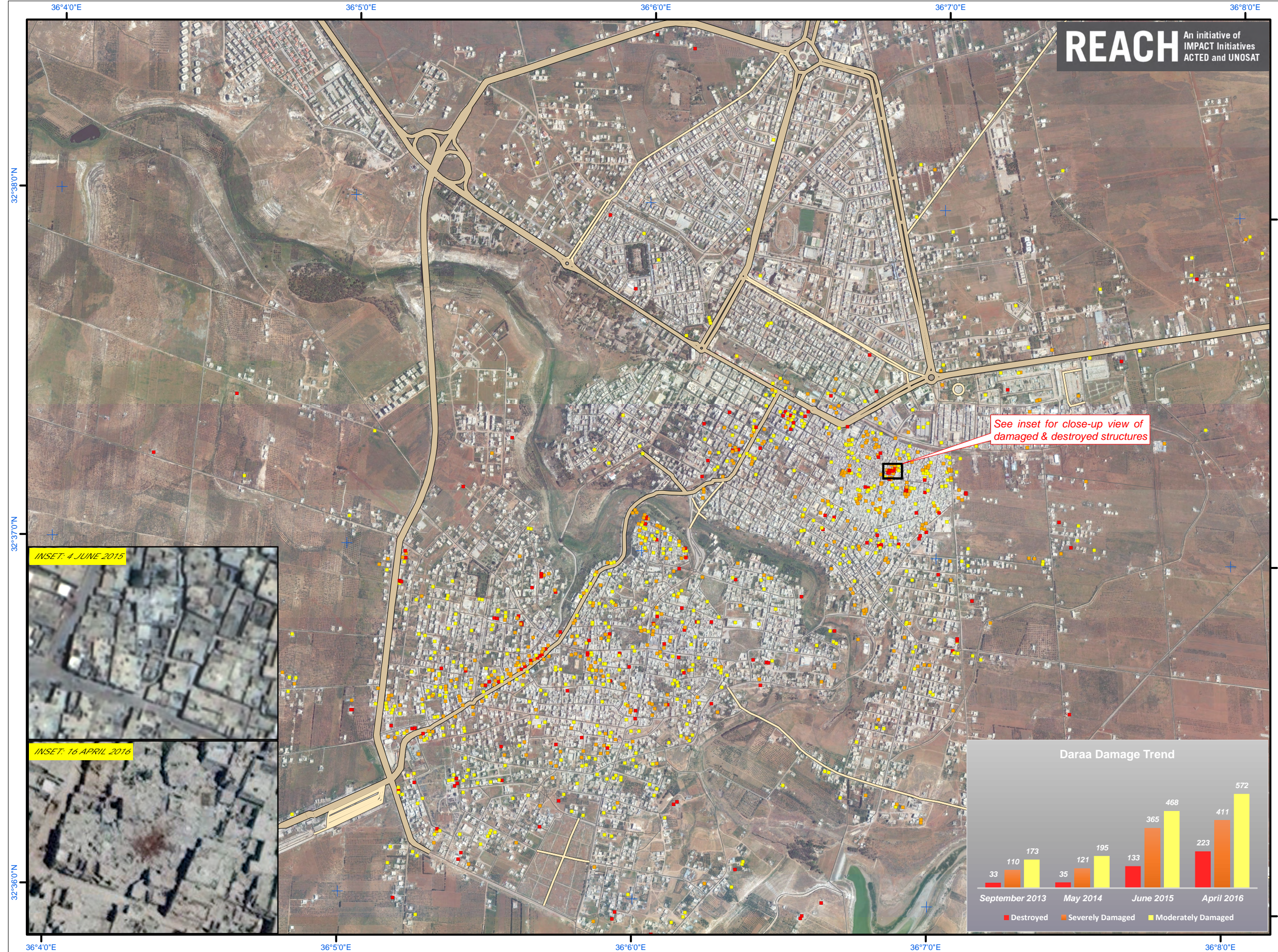
Complex Emergency



Production Date: 6/23/2016

Version 1.0

Activation Number: CE20130604SYR



Satellite Data (1): WorldView-2
 Imagery Dates: 16 April 2016
 Resolution: 50 cm
 Copyright: DigitalGlobe
 Sources: US Department of State, Humanitarian Information Unit, NextView License, European Space Imaging
 Satellite Data (2): Pleiades
 Imagery Dates: 4 June 2015
 Resolution: 50 cm
 Copyright: CNES (2015), Distribution AIRBUS DS
 Source: Airbus Defense and Space
 Satellite Data (3): WorldView-2
 Imagery Dates: 01 May 2014 & 07 September 2013
 Resolution: 50 cm
 Copyright: DigitalGlobe
 Sources: US Department of State, Humanitarian Information Unit, NextView License, European Space Imaging
 Satellite Data (4): WorldView-1
 Imagery Date: 14 December 2010
 Resolution: 50 cm
 Copyright: DigitalGlobe
 Source: European Space Imaging
 Road Data: OSM
 Other Data: USGS, UNCS, NASA, NGA
 Analysis: UNITAR / UNOSAT
 Production: UNITAR / UNOSAT
 Analysis conducted with ArcGIS v10.3

Coordinate System: WGS 1984 UTM Zone 37N
 Projection: Transverse Mercator
 Datum: WGS 1984
 Units: Meter

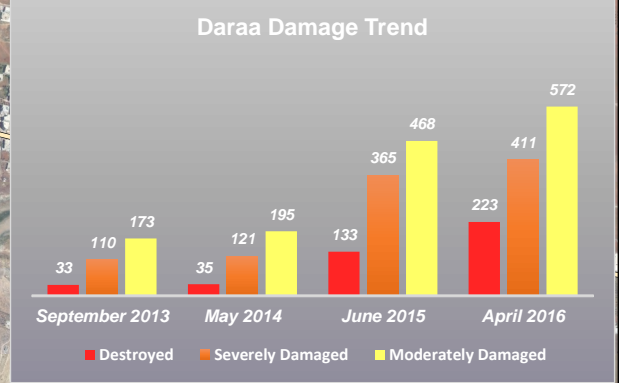
The depiction and use of boundaries, geographic names and related data shown here are not warranted to be error-free nor do they imply official endorsement

This work by UNITAR/UNOSAT is licensed under a Creative Commons Attribution-NonCommercial-ShareAlike 3.0 Unported License.



UNOSAT

Contact Information: unosat@unitar.org
 24/7 Hotline: +41 75 411 4998
www.unitar.org/unosat



INSET: 4 JUNE 2015

INSET: 16 APRIL 2016