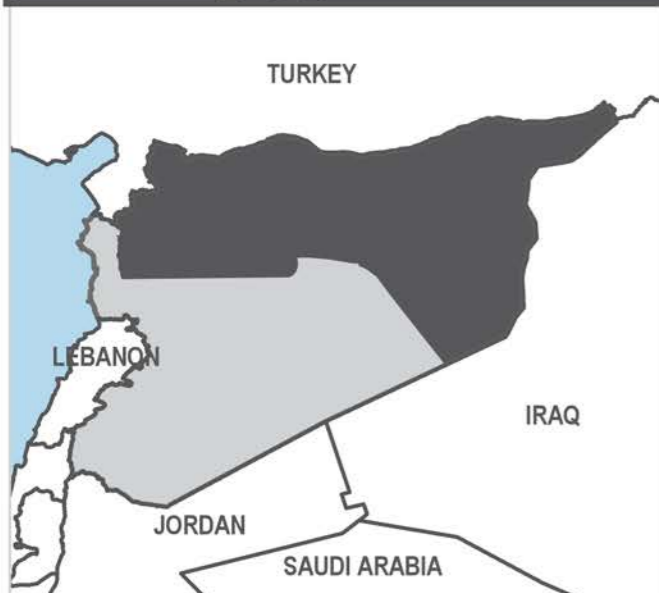
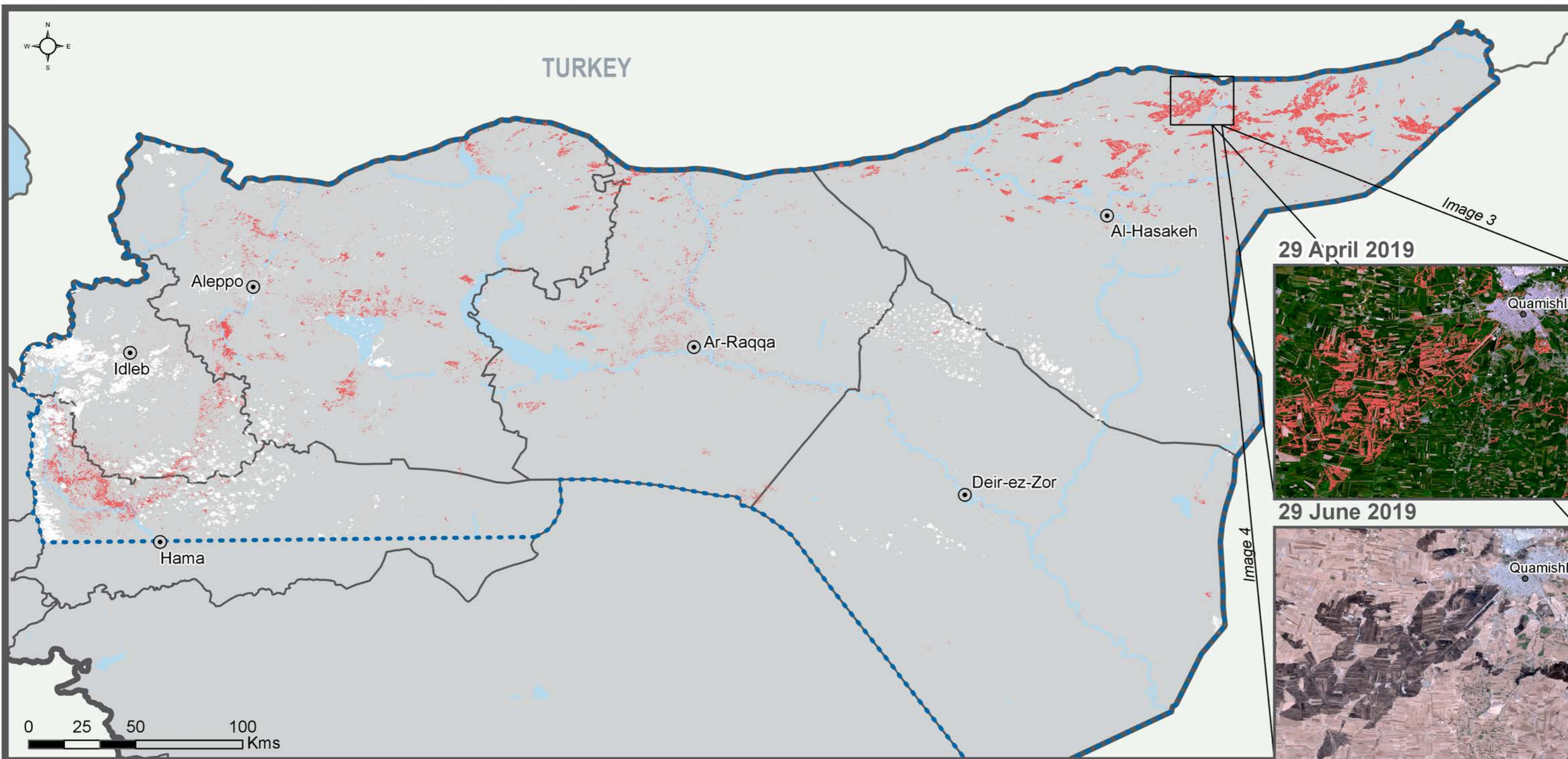




Syrian Arab Republic - Northern Syria

Relativized Burn Ratio Analysis - 4th May to 30th June 2019

Production date : 15 July 2019



Number of acres recently burned

🔥 Roughly 474,000 acres



Legend

- Satellite detected recently burned land
- Non-assessed area due to cloud cover
- Lake/River
- Analysis extent
- Governorate border
- Governorate capital

Methodology

Using 10m resolution multispectral imagery from the Sentinel-2A satellite, a relativized burn ratio (RBR) was calculated and used for burned land classification to assess and quantify areas which have been burned between 4 May and 30 June 2019 in the governorates of Al-Hasakeh, Deir-ez-Zor, Ar-Raqqa, Aleppo, Idleb and Northern Hama. The before and after images are composites ranging from 6 April to 3 May 2019 and 27 to 30 June 2019.

Data sources: OSM, Sentinel-2A 10m resolution, <https://scihub.copernicus.eu>
Image 1 (pre-fire, main map): Sentinel-2A composite 6, 23, 25, 26, 28 April & 3 May 2019

Image 2 (post-fire, main map): Sentinel-2A composite 27, 29, 30 June 2019

Image 3 (inset map): Sentinel-2A composite 25 April 2019

Image 4 (inset map): Sentinel-2A composite 29 June 2019

Note: Data, designations and boundaries contained on this map are not warranted to be error-free and do not imply acceptance by the REACH partners, associated, donors mentioned on this map.



Syrian Arab Republic - Northeast Syria

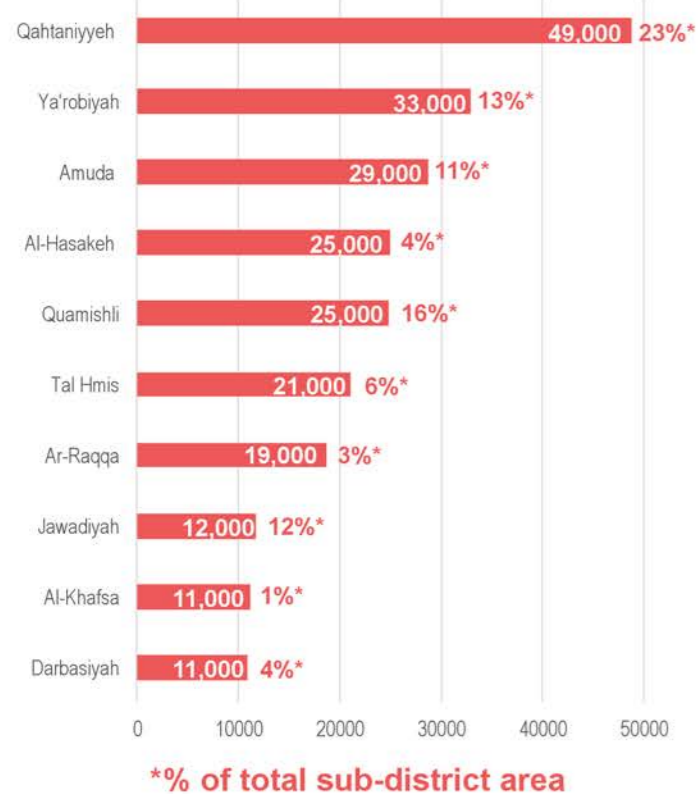
Relativized Burn Ratio Analysis - 4th May to 30th June 2019

Production date : 15 July 2019

Number of acres recently burned in northeast Syria

Roughly 322,500 acres

10 Sub-districts with largest burned area

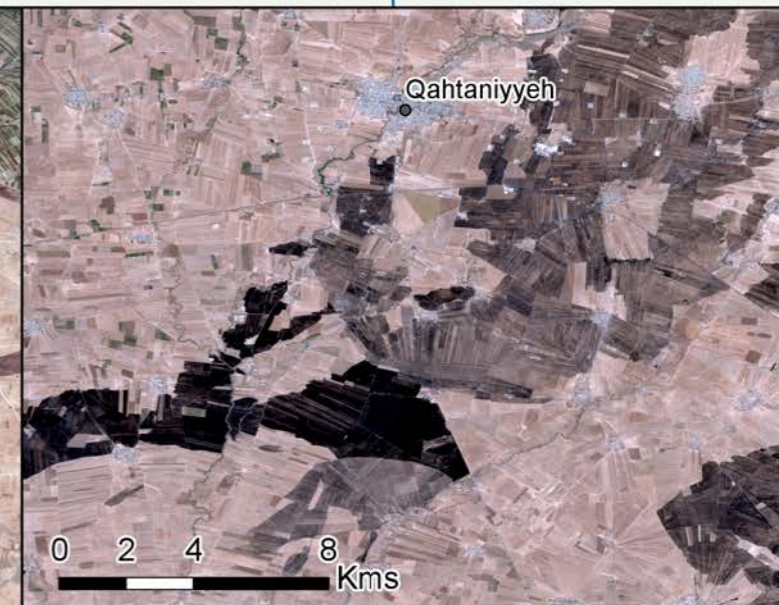
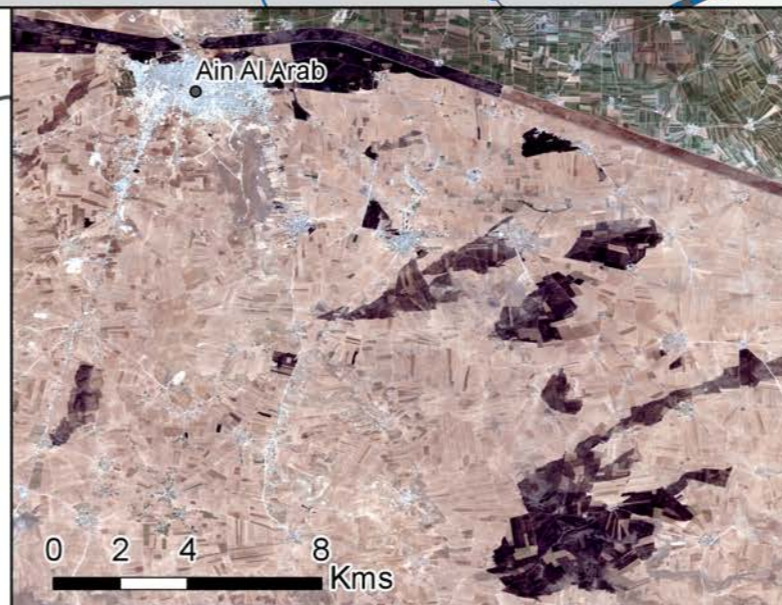
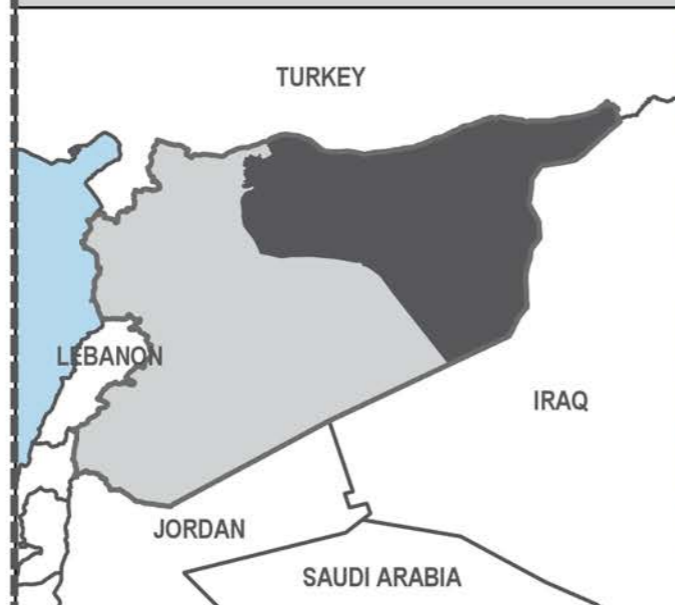
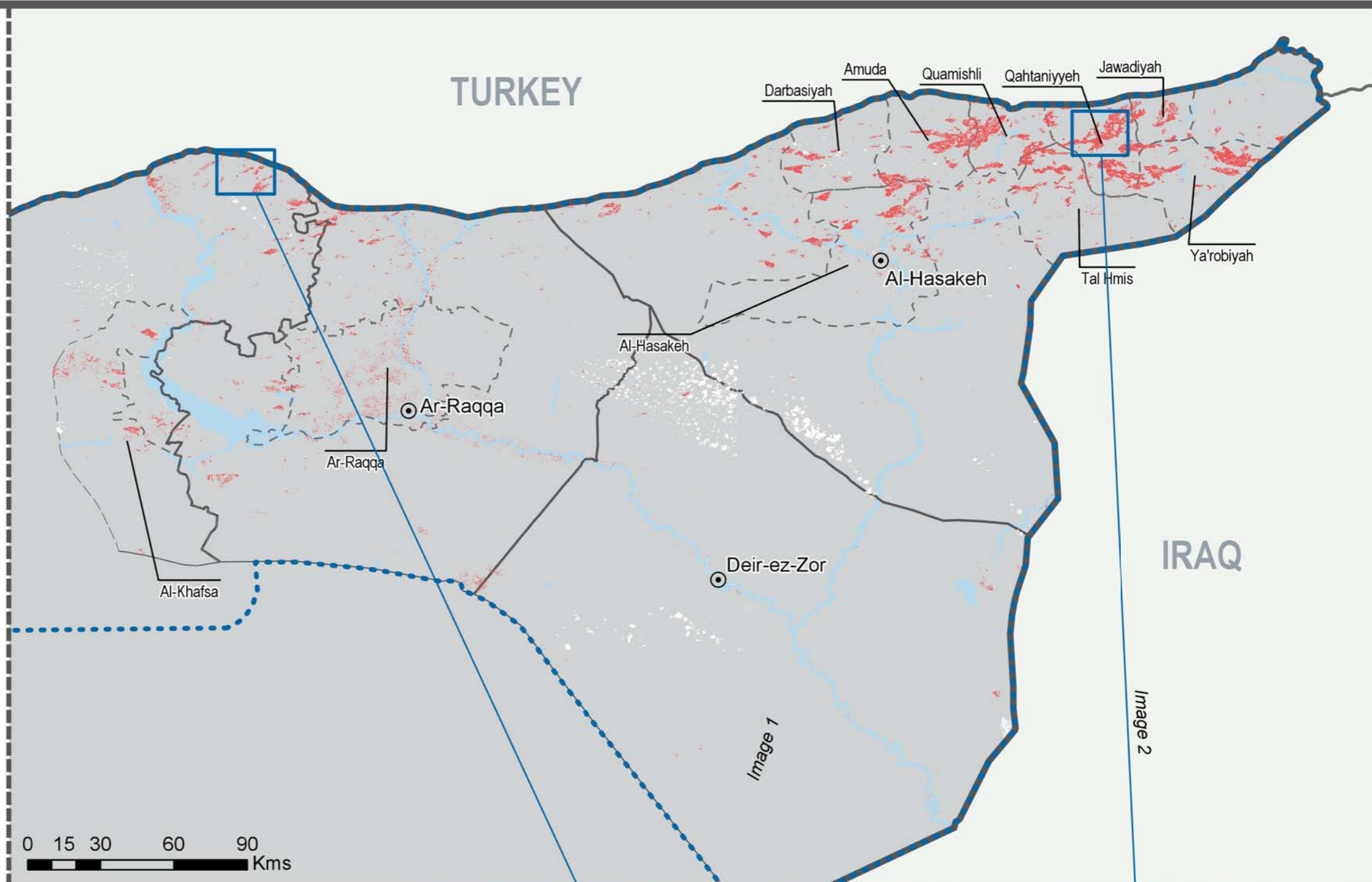


Legend

- Satellite detected recently burned land
- Non-assessed area due to cloud cover
- Lake/River
- 10 Sub-districts with largest burned area
- Analysis extent
- Governorate border
- Governorate capital

Data sources: OSM, Sentinel-2A 10m resolution,
<https://scihub.copernicus.eu>
Image 1: Sentinel-2A 29 June 2019
Image 2: Sentinel-2A 29 June 2019
Coordinate System: GCS WGS 1984
Contact: reach.mapping@impact-initiatives.org

Note: Data, designations and boundaries contained on this map are not warranted to be error-free and do not imply acceptance by the REACH partners, associated, donors mentioned on this map.





Syrian Arab Republic - Northwest Syria

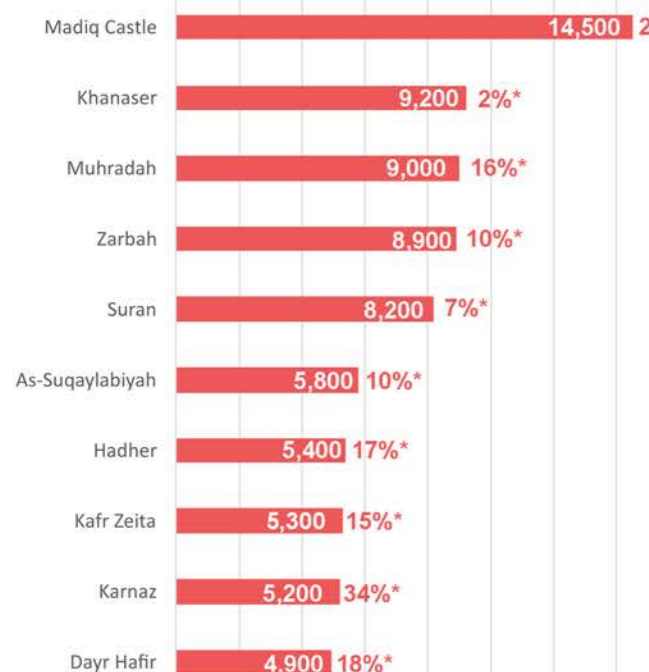
Relativized Burn Ratio Analysis - 4th May to 30th June 2019

Production date : 15 July 2019

Number of acres recently burned in northwest Syria

Roughly 151,500 acres

10 Sub-districts with largest burned area



0 2000 4000 6000 8000 10000 12000 14000

*% of total sub-district area

Legend

- Satellite detected recently burned land
- Non-assessed area due to cloud cover
- Lake/River
- 10 Sub-districts with largest burned area
- Analysis extent
- Governorate border
- Governorate capital

Data sources: OSM, Sentinel-2A 10m resolution,
<https://scihub.copernicus.eu>
Image 1: Sentinel-2A 30 June 2019
Image 2: Sentinel-2A 30 June 2019
Coordinate System: GCS WGS 1984
Contact: reach.mapping@impact-initiatives.org

Note: Data, designations and boundaries contained on this map are not warranted to be error-free and do not imply acceptance by the REACH partners, associated, donors mentioned on this map.

