



IDP Camp Profile - Bajed Kandala

Dahuk, Iraq
August 2016

Management agency: BRHA
Manager/Focal point: Salar Abdull-Majeed aziz
Phone number: 7507472757
Email: n/a
Registration actor: BRHA

Summary

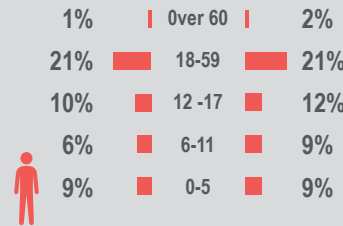
This profile provides an overview of conditions in Bajed Kandala camp. Primary data was collected through household surveys on 29-08-16. Households were randomly sampled to a 95% confidence and 10% margin of error, based on population figures provided by CCCM. In some cases, additional information from camp managers has been used to support findings. Round V of data collection was in April 2016.

Camp Overview

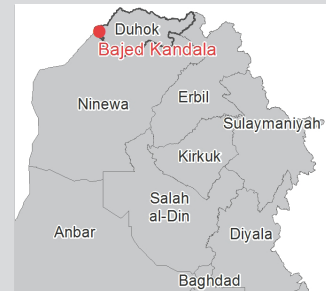
of individuals: 11532
of households: 2060
Date opened: 01-09-14
Occupied number: 1522
Ongoing extension: No
Planned capacity: 1522
Camp area: 416,293

Demographics

47% male / 53% female

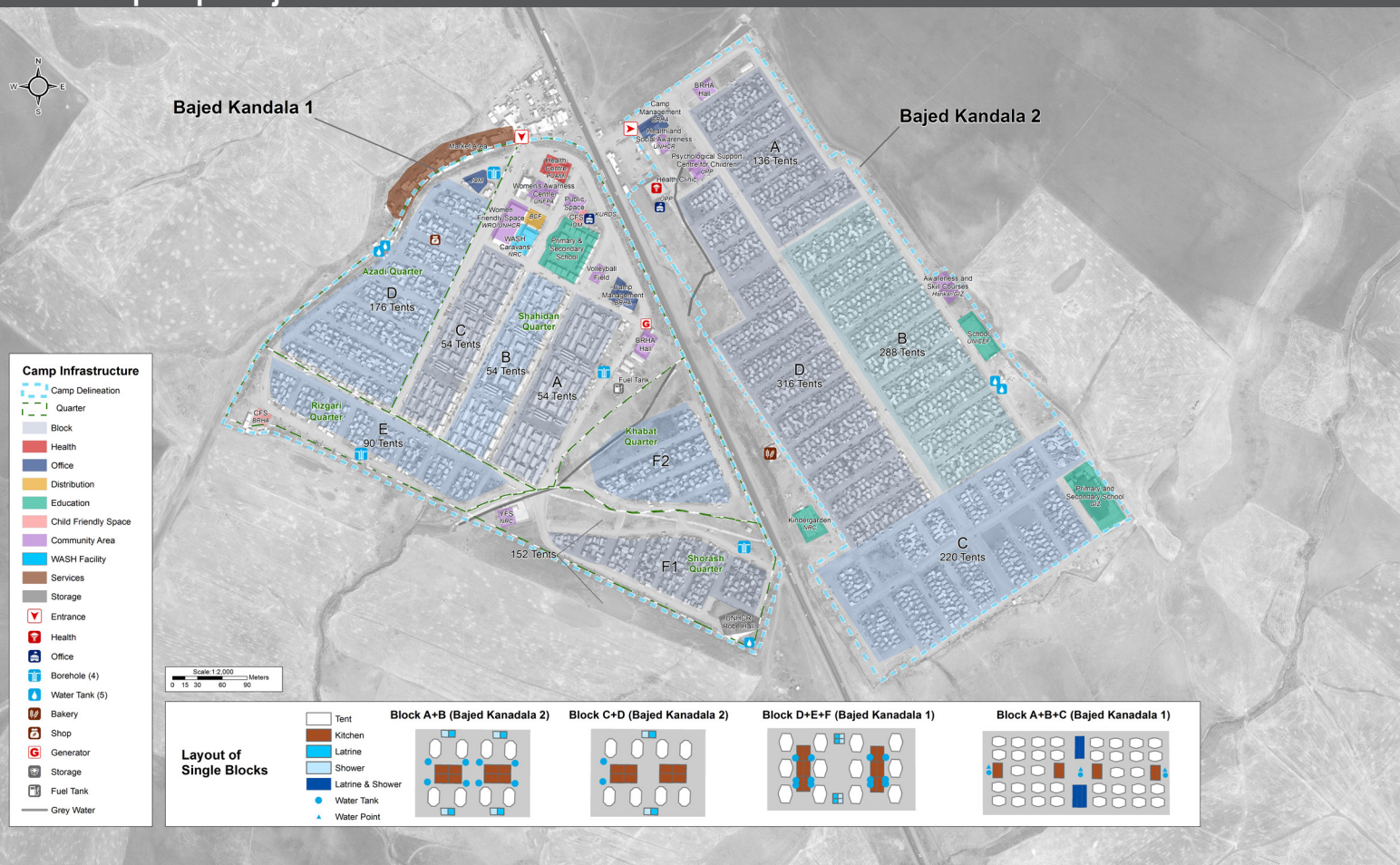


Location Map



IDP Camp Map - Bajed Kandala

Lat. 37° 3' 19.336" N Long. 42° 26' 48.293" E



Sectoral Minimum Standards

		Target	Previous Round	Current Round	Achievement
Education	% of children aged 6-11 attending formal school	100%	75%	90%	●
	% of children aged 12-17 attending formal school	100%	62%	77%	●
Food	% of households accessed Family Food Parcel or equivalent in the past month	100%	97%	96%	●
Health	Health services are available on-site or within walking distance	Yes	Yes	Yes	●
CCCM	Average open area per household	min. 30m ²	169m ²	175m ²	●
Protection	% of IDPs registered on an individual basis (MODM/DDM)	100%	98%	99%	●
	% of households accessed shelter assistance since arrival at the camp	100%	98%	85%	●
	Average covered area per person	min. 3.5m ²	3.8m ²	3.8m ²	●
WASH	Average number of individuals per shelter	max.5	8	8	●
	# of persons per latrine	max. 20	14	15	●
	# of persons per shower	max. 20	18	18	●
	Frequency of solid waste disposal at least weekly	min. weekly	Yes	Yes	●

*GPS tracking of camp infrastructure was not possible this round due to restrictions from authorities. Area calculations subsequently could not be determined.

Targets based on minimum standards agreed with the CCCM Cluster, Iraq. Findings based on household-level data, enumerator field observations, and camp management documentation

● Minimum standard reached, ● More than 50% minimum standard reached, ● Less than 50% of minimum standard reached or not at all





IDP Camp Profile - Bajed Kandala

Dahuk, Iraq
August 2016

Management agency: BRHA
Manager/Focal point: Salar Abdull-Majeed aziz
Phone number: 7507472757
Email: n/a
Registration actor: BRHA

Shelter

Top three observed shelter types*

Tent with brick walls	96%	<div></div>
Semi-Permanent structure	4%	<div></div>
n/a	n/a	

*Households were asked to select all shelter typologies within household.

Winterisation and NFI items

70%	reported a second fly sheet
87%	reported access to a heater
80%	reported at least one blanket per person
50%	reported at least one mattress per person
4.6	average number of carpets
53%	reported shelter provides warmth in winter

Hazards

10%	reported exposed electrical cables at site
-----	--

Shelter Improvement

72%	reported making own improvements to their shelter
-----	---

Community Organisation

IDP committees

98%	reported awareness of IDP committee(s)
-----	--

Complaints mechanism

100%	reported awareness of complaints mechanism
------	--

Protection

Family Separation

0%	reported hosting unaccompanied or separated minors
1%	reported that other family members intended to join them

Vulnerable groups

Pregnant / lactating women	28%	<div></div>
Chronically ill individual(s)	5%	<div></div>
Disabled individual(s)	2%	<div></div>
Female headed households	6%	<div></div>

Intentions

4%	planned to move to a different location in next 3 months
----	--

Restrictions

2%	reported entry or exit restrictions during daylight hours
----	---

Food Security and Coping Strategies

Reported access to food assistance

96%	accessed food assistance in past month
97%	received Public Distribution System (PDS) in past month

Top three food consumption coping strategies

Cheaper	56%	<div></div>
Borrowed	17%	<div></div>
Less meals	15%	<div></div>

Top three reported livelihood coping strategies

Debt	52%	<div></div>
Support from Family	28%	<div></div>
Sold Assistance	26%	<div></div>

WASH

Latrines and showers

80%	reported public or communal latrines
71%	public/communal latrines lockable from the inside
35%	public/communal latrines with functioning lighting

Top three reported methods of waste removal

Collected	66%	<div></div>
Communal bin	34%	<div></div>
n/a	n/a	

Reported drinking water sources

0%	connection inside the home to collective water storage
81%	connection inside the home to private water storage
19%	communal water tap outside the shelter

Access to water

3%	reported 24 consecutive hours without access to water in the past month
----	---

Household Income

14%	reported as being economically inactive
-----	---

Top three income sources*:

Public security official	24%	<div></div>
Agricultural labour	19%	<div></div>
No livelihood	14%	<div></div>

*Households were asked to select all income sources within household.

