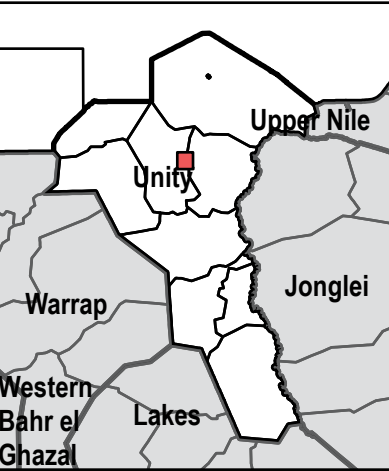
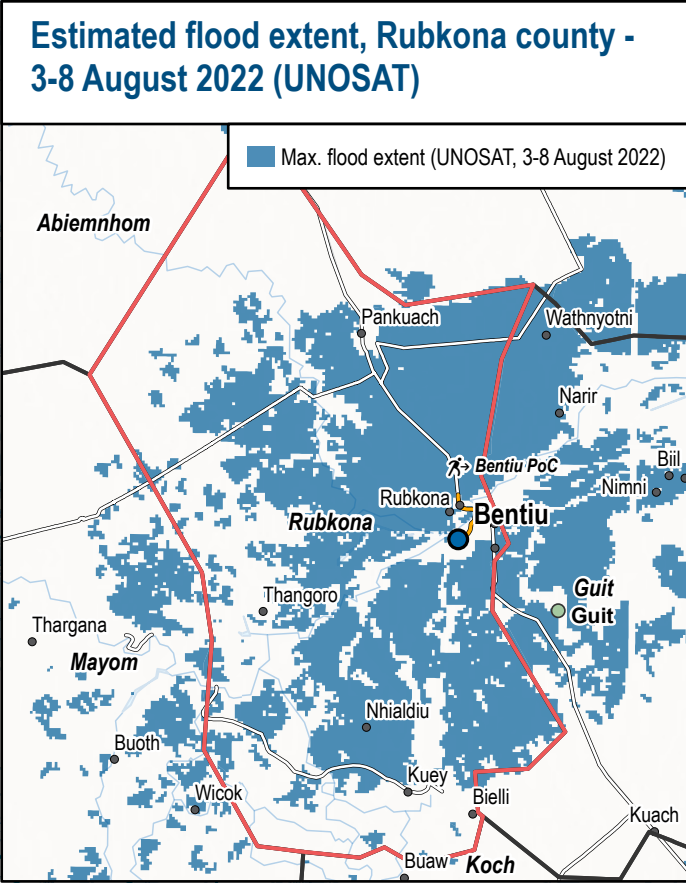
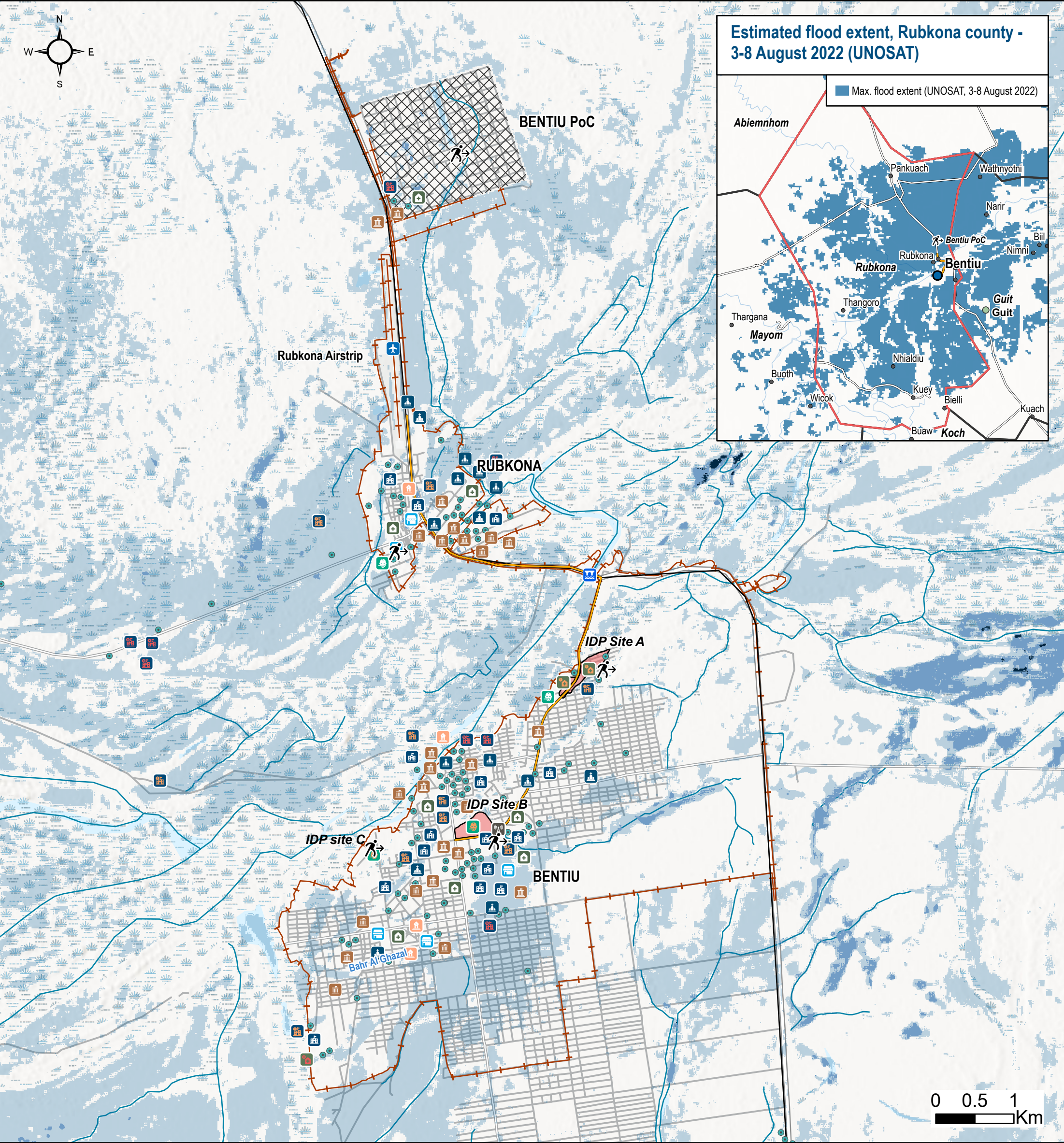


Key infrastructure and estimated maximum flood exposure (2019-2021)



- | | | |
|---------------------------------|------------------------------------|------------------|
| Estimated maximum flood extent | Education (operational) | PoC |
| Date | Education (temporary setup) | IDP Site |
| Oct 2021 | Education (not operational) | Dykes |
| Oct 2021 + Oct 2020 or Oct 2019 | Healthcare (operational) | Tarmac roads |
| Oct 2021 + Oct 2020 + Oct 2019 | Healthcare (temporary setup) | Unsurfaced roads |
| Infrastructure | Healthcare (not operational) | Rivers |
| Airstrip | Market | Settlements |
| Administrative | Mosque | State capital |
| Bridge | Nutrition centre | County capital |
| Church | Nutrition centre (temporary setup) | Major settlement |
| Communication tower | Water point | |

Map shows estimated maximum flood extent in October 2021, with areas flooded in October 2020 and 2019 also shown. Analysis conducted in Google Earth Engine using Sentinel 1 SAR data and calculation of normalised difference water index (NDWI) using Sentinel 2 imagery. Flood extent estimated, with some verification in field and using high resolution satellite imagery.

Infrastructure data from IOM (2021) and REACH survey (June 2022). Health and education functionality information provided by partners including WHO and Windle Trust. Dyke layout data from IOM (2022). Note that dyke layers are drafts developed for operational purposes, final validation ongoing hence not final approved IOM material. Road data from OSM (2020) and REACH (2020).

Note: Data, designations and boundaries contained on this map are not warranted to be error-free and do not imply acceptance by the REACH partners, associates, donors mentioned on this map.

OSM source: ©OpenStreetMap contributors

Coordinate System: WGS 1984 UTM Zone 36N

Contact: south.sudan@reach-initiative.org