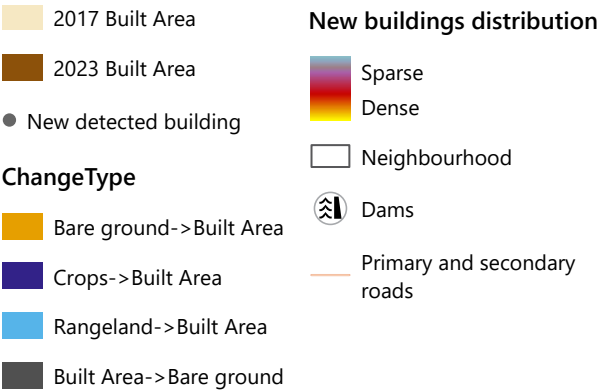
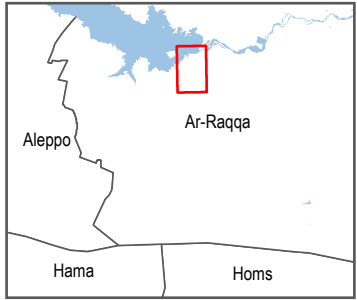
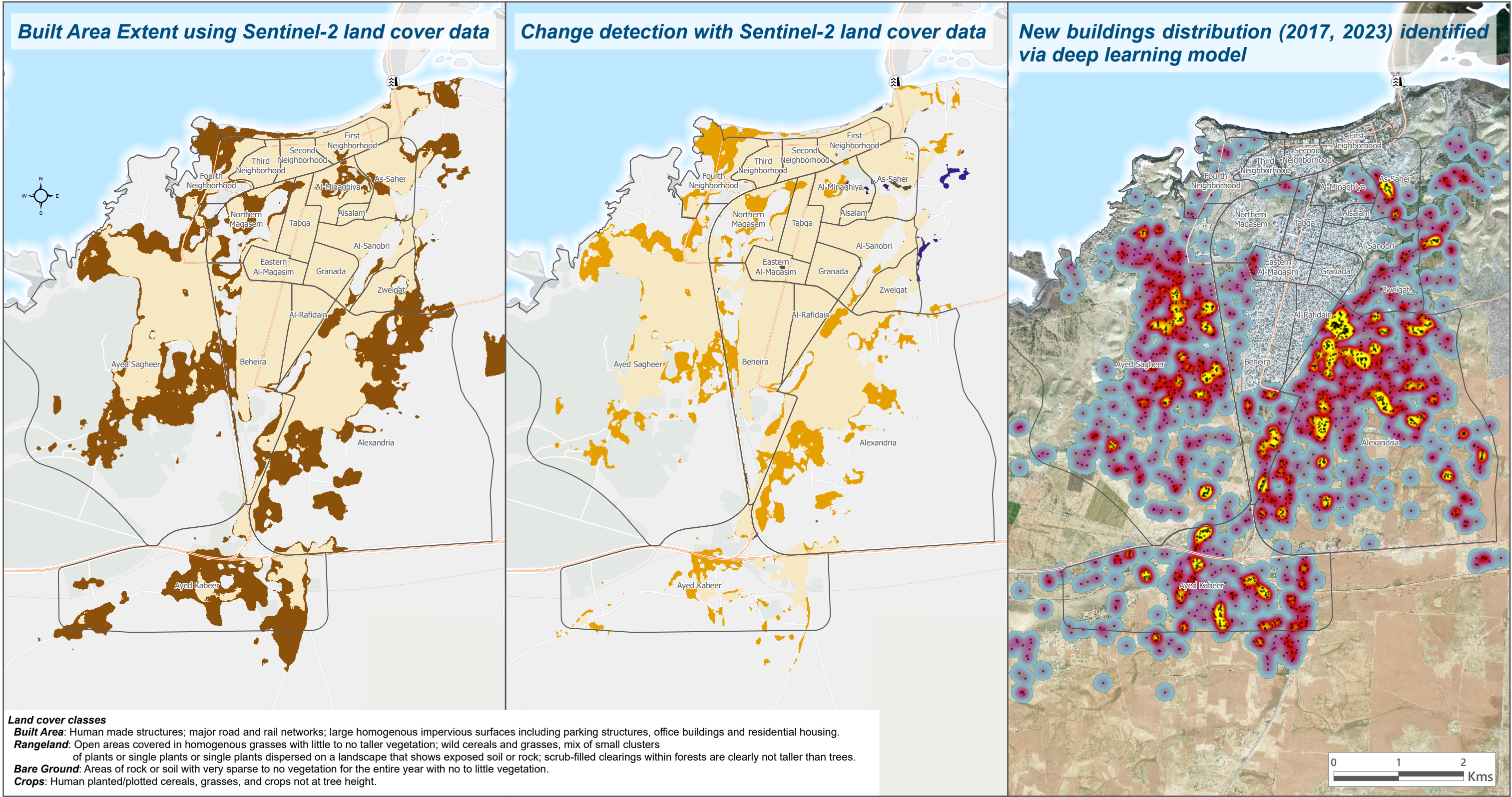


# Syrian Arab Republic - Tabqa City

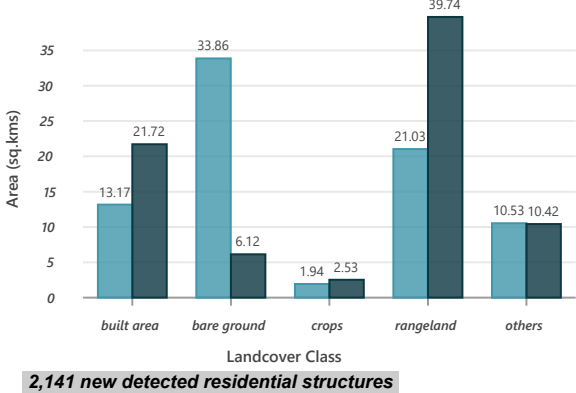
## Urban Expansion Analysis (2017, 2023)

For humanitarian use only  
Production Date: 24 April 2024



Tabqa city's urban expansion, analyzed with Sentinel-2 land cover data boasting 84% overall accuracy, offers valuable insights into mapping built area growth from 2017 to 2023 and identifying change types via change detection analysis. Utilizing deep learning on high-res imagery with manual refinement to detect new residential structures.

In 2017, the built area covered 13.17 sq.km, expanding to 21.72 sq.km by 2023. During this period, 4.39 sq.km of rangeland, 3.91 sq.km of bare ground, and 0.1 sq.km of crops transformed into built areas. Conversely, 0.05 sq.km shifted from built areas to bare ground.



Data sources:  
REACH re-work of © OpenStreetMap contributors and OCHA; administrative boundaries (admin0, admin1). Tabqa city local authority: neighborhoods administrative divisions.  
Satellite Imagery: WorldView-2 from 23 January 2017 and 22 December 2022  
Copyright: ©2017/2022 Maxar/ DigitalGlobe  
Source: US Department of State, Humanitarian Information Unit, NextView.  
Imagery: Sentinel-2 10m land use/land cover time series of the world  
Source Imagery: Sentinel-2 L2A  
Attribution: Esri, Impact Observatory, and Microsoft  
License: Esri Master License Agreement  
Coordinate System: WGS 1984 UTM zone 37N  
File: REACH\_SYR\_Map\_SYR2401\_TabqaCity\_UrbanExpansionAnalysis\_24April 2024\_A3  
Contact: reach.mapping@impact-initiatives.org

Note: Data, designations and boundaries contained on this map are not warranted to be error-free and do not imply acceptance by REACH partners, associates or donors mentioned on this map.