

Yemen Joint Market Monitoring Initiative

June 2021 Situation Overview

Governorates: 16
Districts: 58
Total key informants (KIs): 232



WASH Cluster
Water Sanitation Hygiene

CMWG

Intersector Cash
and Markets
Working Group

REACH

Informing
more effective
humanitarian action

Introduction

The Yemen Joint Market Monitoring Initiative (JMMI) was launched by REACH in collaboration with the Water, Sanitation, and Hygiene (WASH) Cluster and the Cash and Market Working Group (CMWG) to support humanitarian actors with the harmonization of price monitoring among all cash actors in Yemen. The JMMI incorporates information on market systems including price levels and supply chains. The basket of goods to be assessed includes ten non-food items (NFIs), such as fuel, water, and hygiene products, reflecting the programmatic areas of the WASH Cluster. The JMMI tracks all components of the WASH and Food Survival Minimum Expenditure Basket (SMEB) as well as other food and non-food items. In light of the current COVID-19 pandemic, REACH has adapted the JMMI to begin assessing the potential impact of the pandemic on markets and on respondents' businesses.

Methodology

Data was collected through interviews with vendor key informants (KIs), selected by partner organisations from markets of various sizes in both urban and rural areas. Following data collection, REACH compiles, cleans and analyzes all data, through detailed follow-ups with partners. Findings are **indicative** for the assessed locations and time frame in which the data was collected. From April to September 2020, data for the JMMI was collected on a bi-weekly basis to better track disruptions caused by COVID-19. COVID-specific JMMI factsheets were produced bi-weekly, and a more comprehensive situation overview using data from both factsheets was produced monthly. After discussion with the CMWG, REACH resumed data collection on a monthly basis in September, and resumed producing one monthly situation overview. Please refer to the [appendix](#) for additional methodological details.

JMMI monthly figures

Data collection **6 June - 12 June**

15 Participating partners
16 Governorates assessed
58 Districts assessed
232 Vendor KIs surveyed

Assessed items	May 2021 prices in YER	June 2021 prices in YER	Change (from May 2021)
Full SMEB* (dry beans)	70065	71915	2.6%
WASH SMEB**	15695	16225	3.4%
Soap (100g)	200	200	0.0%
Laundry powder (100g)	136	150	10.3%
Sanitary napkins (10 Pack)	600	650	8.3%
Water trucking (1m³)	2500	2500	0.0%
Petrol (1L)	600	600	0.0%
Diesel (1L)	630	625	-0.8%
Bottled water (0.75L)	150	150	0.0%
Treated water (10L)	100	100	0.0%
Bleach (1L)	900	850	-5.6%
Cooking gas (1cylinder)	5500	5500	0.0%
Food SMEB (dry beans)^	54370	55690	2.4%
Food SMEB (canned beans)§	58770	59590	1.4%
Wheat flour (1 kg)	440	450	2.3%
Rice (1 kg)	900	920	5.6%
Dry kidney beans (1 kg)	1000	1050	5.0%
Canned kidney beans (15 oz can)	400	400	0.0%
Lentils (1 kg)	800	800	0.0%
Vegetable oil (1L)	1250	1250	0.0%
Sugar (1 kg)	495	516	4.2%
Salt (1 kg)	125	150	20.0%
Potatoes (1 kg)	500	450	-10.0%
Onions (1 kg)	400	400	0.0%

* Includes WASH and food SMEB; excludes cooking gas, NFI/Shelter and Services.

** Contains soap (1.05 kg), laundry powder (2 kg), sanitary napkins (50 units), and water (3.15 m³).

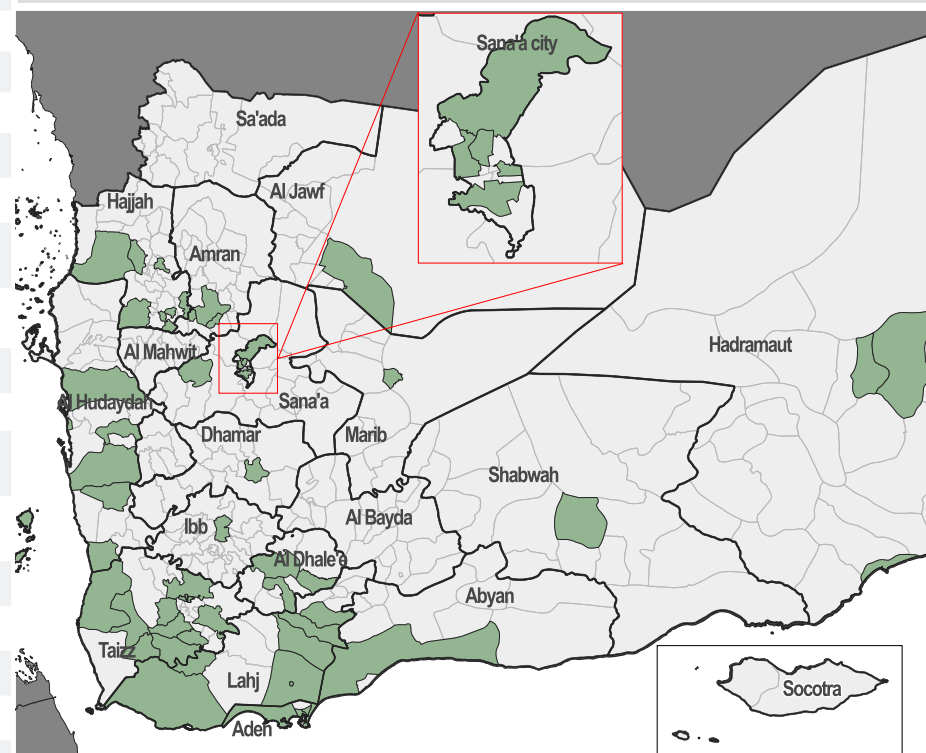
Sanitary napkins' units were changed from 20 to 50 based on CMWG's September SMEB revision.

^ Contains wheat flour (75 kg), dry beans (10 kg), vegetable oil (8 L), sugar (2.5 kg), salt (1 kg)

§ Contains wheat flour (75 kg), canned beans (36 cans), vegetable oil (8 L), sugar (2.5 kg), salt (1 kg)

Key findings

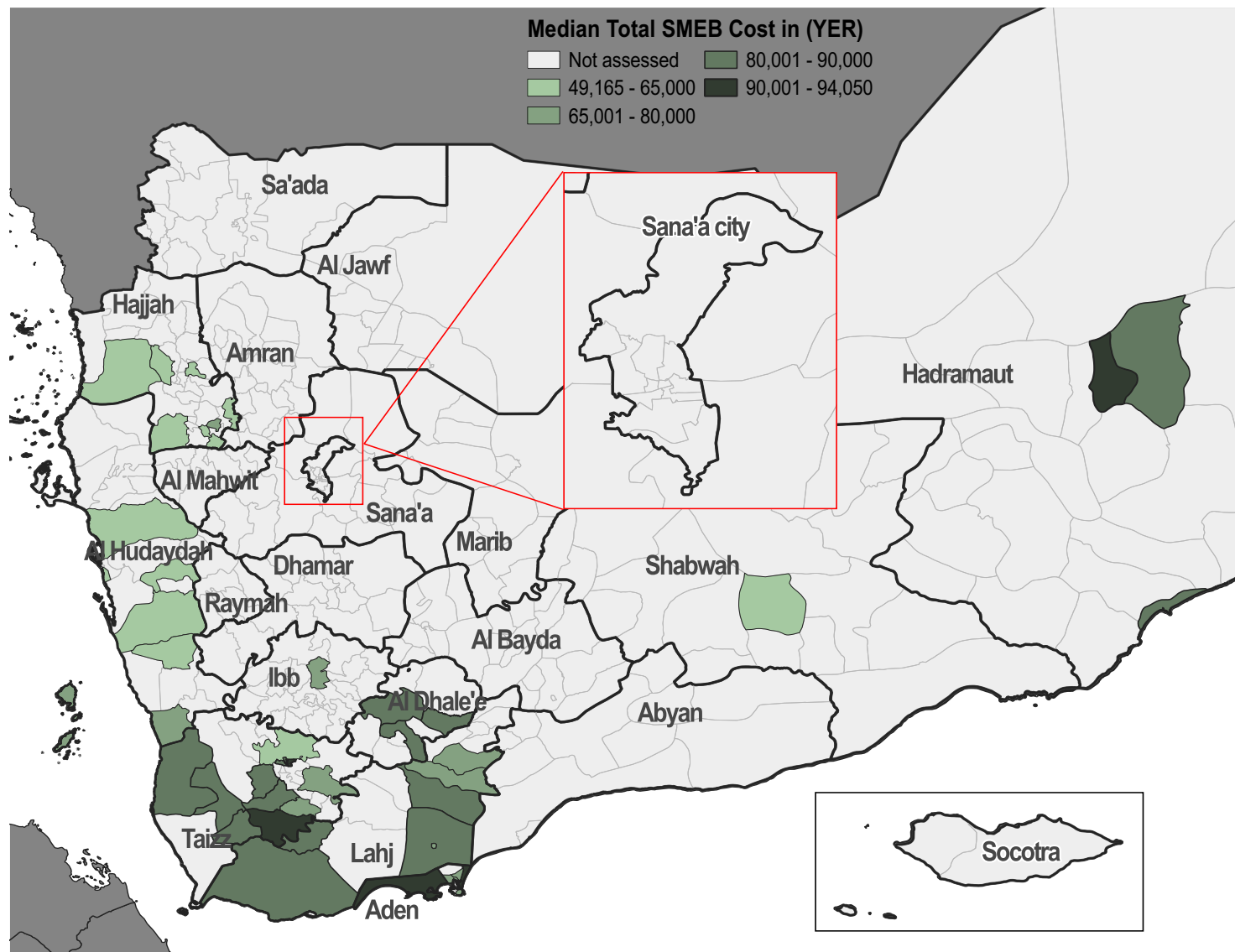
- Overall, exchange rates have increased between May 2021 and June 2021. However, the median national exchange rate remained stable with 598 Yemeni Riyal (YER) to one US dollar (USD). The lowest exchange rate was recorded in Ibb (592 YER to 1 USD). The highest exchange rate was recorded in Hadramaut (935 YER to 1 USD), followed by Lahj and Aden governorate (934 YER to 1 USD).
- The average reported restocking time slightly decreased for food and fuel assessed items, and an increase in the WASH assessed items, after an increase was observed in all items in the last round of data collection in May.
- The reported total number of business closed in the last 2 weeks within a 2 minute walk from KIs' stalls decreased significantly to reach 72 businesses compared to last round in May with a total of 135 businesses reported to be closed around the assessed markets.
- Price inflation remains the most commonly reported constraint faced by the vendor KIs when obtaining fuel, WASH items, food items, and water trucking services.
- The food SMEB cost (with dry beans) was found to have increased by 2.4% since the last round of data collection in May, and the WASH SMEB cost increased by 3.4% since last round, contributing to a 2.4% increase in the overall SMEB cost.
- The proportion of vendors perceiving to be able to absorb a sudden increase in all items demand decreased considerably, after an increase was recorded in the last round of data collection in May.



Exchange Rate

250 0.0% USD/YER Official	595 0.0% USD/YER Parallel market (in DFA) rate June 2021	595 USD/YER Parallel Market rate (in DFA) May 2021	930 4.5% USD/YER Parallel market (in IRG) rate June 2021	890 USD/YER Parallel Market rate (in IRG) May 2021
--	--	--	--	--

Total SMEB prices (6-12 June 2021)*,^



*Total SMEB cost in the legend represents the calculated food basket cost with dry beans.

^ Red outlines over districts indicate the districts for which outliers were recorded.

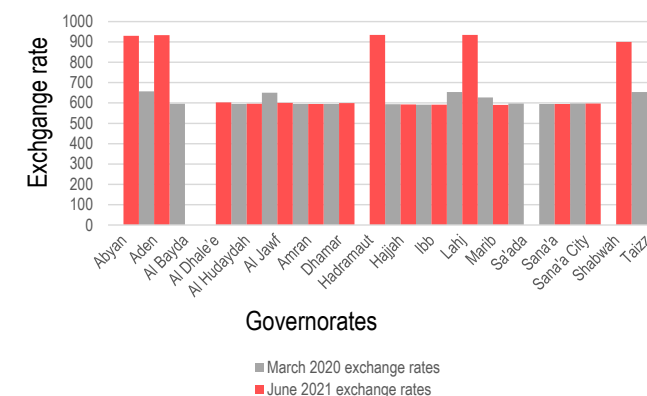
Exchange rate (YER/USD)*

Governorate	March 2020 [^]	May 2021	June 2021
Abyan	NA	(890)	930
Aden	658	891	934
Al Bayda	596	NA	NA
Al Dhale'e	NA	600 (895)	603 (931)
Al Hudaydah	595	593	596
Al Jawf	650	600	600
Amran	595	595	595
Dhamar	595	599	599
Hadramaut	NA	896	935
Hajjah	594	596	593
Ibb	592	591	592
Lahj	654	889	934
Marib	628	600	590
Sa'ada	598	NA	NA
Sana'a	595	595	595
Sana'a City	598 (628)	595	597
Shabwah	NA	900	900
Taizz	654	890	925

*New banknote exchange rates / Exchange rate for the new currency released last year is in parenthesis.

[^]March was chosen as a baseline to assess the effect of COVID-19 on exchange rates.

Exchange rate in March 2020 and June 2021 (YER/USD)*



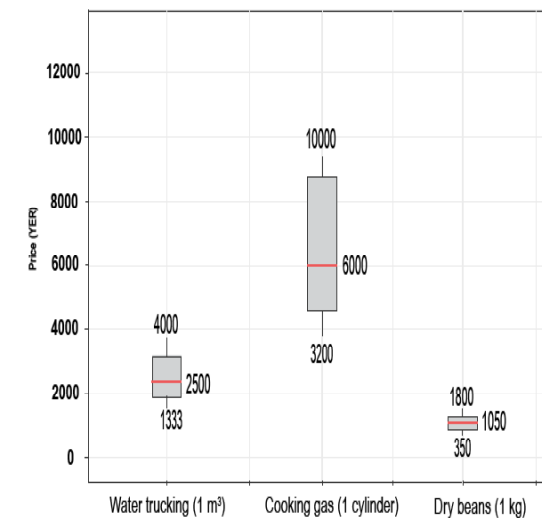
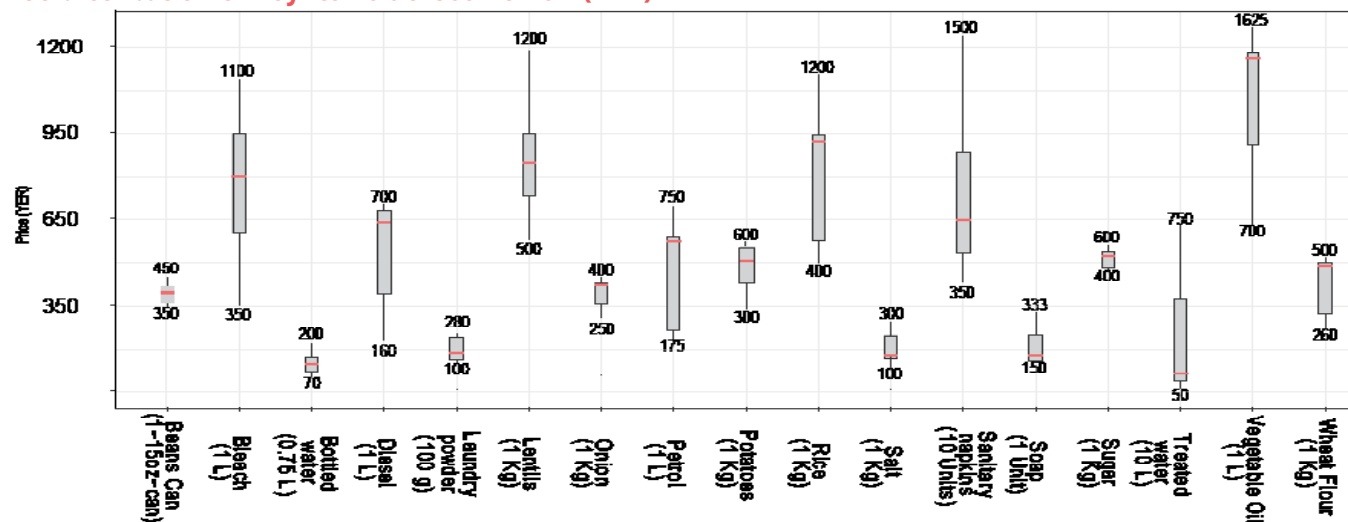
*Governorate labels point to two bars indicating March 2020 base values and June 2021 values. Gaps between bars indicates that no exchange rate value was recorded in this governorate.

Price per key item, per governorate (YER)*

Governorate	Petrol (1L)	Diesel (1L)	Cooking gas (1 cylinder)	Bottled water (0.75L)	Treated water (10L)	Soap (100g)	Laundry powder (100g)	Sanitary napkins (10 units)	Bleach (1L)	Water trucking (1m³)	WASH SMEB	Wheat flour (1Kg)	Rice (1Kg)	Beans dry (1Kg)	Beans cans (15oz)	Lentils (1 Kg)	Vegetable oil (1L)	Sugar (1Kg)	Salt (1Kg)	Potatoes (1Kg)	Onions (1 Kg)	Food SMEB (Dry Beans)	Food SMEB (Canned beans)
Abyan	565	580	4500	100	100	263	100	750	1100	2000	14812	500	1200	NA	450	NA	1400	600	100	400	400	NA	66500
Aden	560	580	9000	200	100	200	156	700	1000	3000	18170	500	1100	900	450	1200	1550	550	200	500	400	60475	67675
Al Dhale'e	580	650	6500	175	175	250	180	750	1100	4000	22575	460	935	950	418	600	1625	530	170	500	400	58495	64043
Al Hudaydah	600	625	10000	150	50	150	130	500	550	4000	19275	300	800	500	300	550	1050	400	200	350	250	37100	42900
Al Jawf	750	650	5000	200	NA	250	280	1500	800	2000	22025	280	550	NA	350	NA	1550	500	100	500	400	NA	47350
Amran	550	NA	NA	130	120	150	136	500	800	1600	11835	350	600	NA	300	700	1000	400	150	400	325	NA	46200
Dhamar	650	625	6500	120	550	163	120	500	750	NA	NA	260	900	1150	300	700	1100	400	100	400	350	40900	40200
Hadramaut	500	500	4000	150	750	333	128	800	1000	4000	22657	480	780	1550	420	1000	1380	560	250	500	475	64190	63810
Hajjah	650	650	8750	150	100	150	130	500	925	2500	14550	330	900	1150	300	800	1050	400	100	400	400	45750	45050
Ibb	600	700	8250	150	100	200	150	556	850	3000	17330	450	650	1100	265	800	700	500	150	300	400	51750	50290
Lahj	590	600	5000	200	100	200	150	825	1200	2000	15525	450	1025	1700	450	1200	1450	550	140	500	400	63865	63065
Marib	175	160	3200	70	100	160	160	NA	800	1000	NA	360	600	NA	300	800	1100	550	170	600	600	NA	48145
Sana'a	NA	NA	5000	120	200	200	109	500	800	1375	11111	350	450	NA	300	500	1013	400	150	400	250	NA	46304
Sana'a City	700	750	5000	120	150	162	115	600	725	1333	11195	310	900	NA	375	750	904	400	135	400	300	NA	45117
Shabwah	500	500	4500	100	150	200	200	350	350	2600	16040	350	400	350	350	550	1400	425	300	350	375	42313	51413
Taizz	640	625	5500	200	120	200	200	700	900	3000	19050	480	1100	1800	450	1000	1500	550	150	500	400	67525	65725
National median price	600	625	6000	150	100	200	150	650	850	2500	16225	450	920	1050	400	800	1250	516	150	450	400	55690	59590

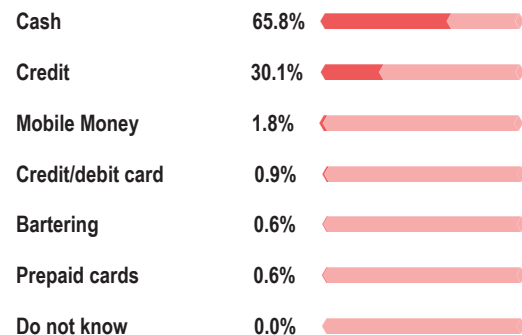
*Darker color strokes indicate high outliers for each commodity, lighter color strokes indicate the low outliers of each commodity.

Price distribution of key items across Yemen (YER)



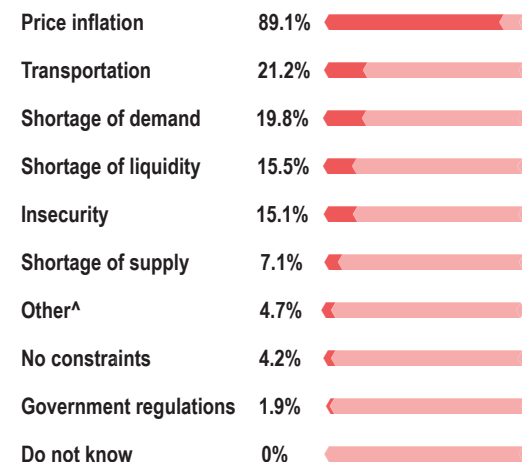
WASH SMEB*

WASH vendor KIs reported accepting the following payment modalities*



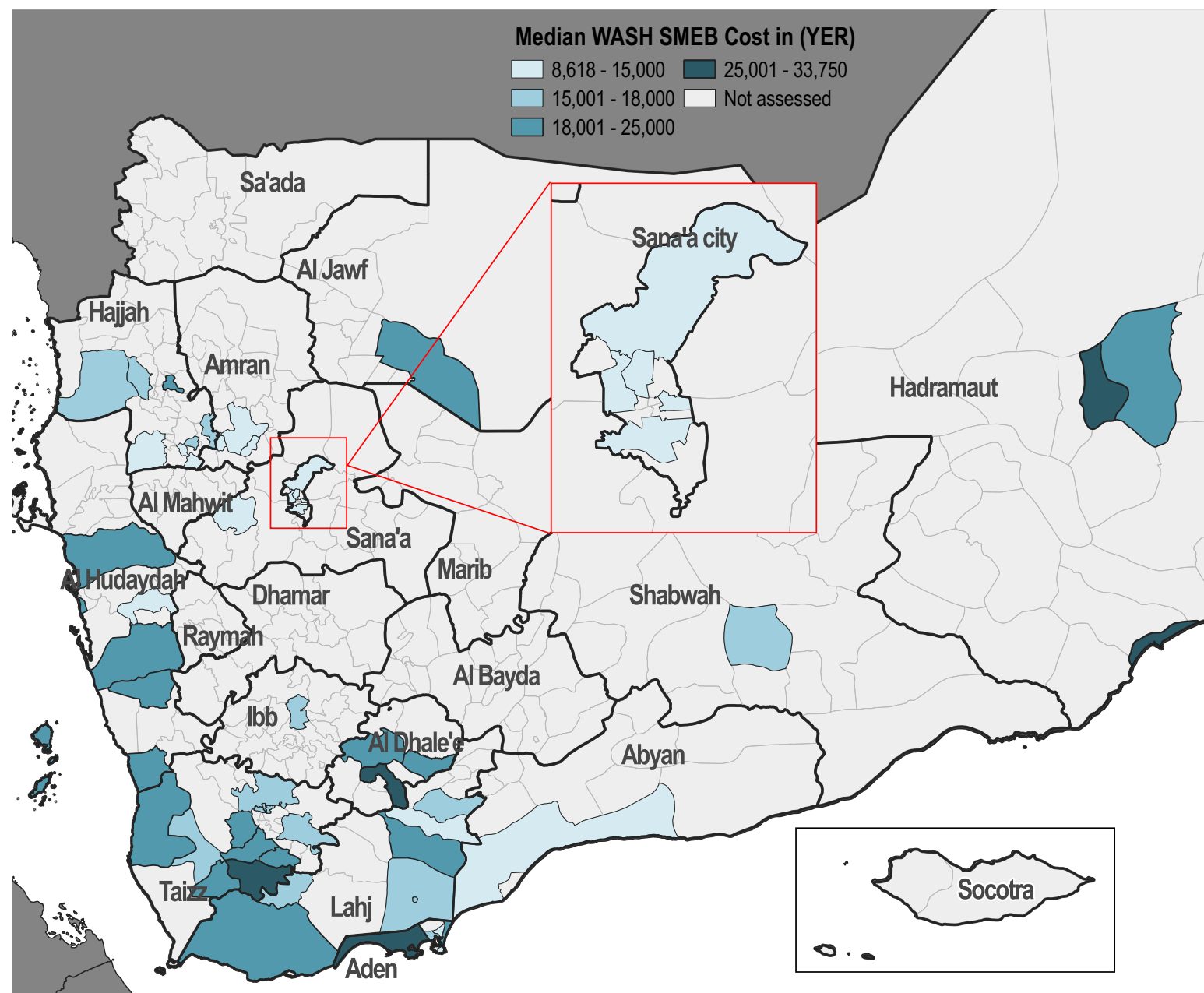
*Values do not add up to 100% as vendor KIs were allowed to select multiple options.

Most commonly reported constraints, by % of WASH vendor KIs*



*Values do not add up to 100% as vendor KIs were allowed to select multiple options.

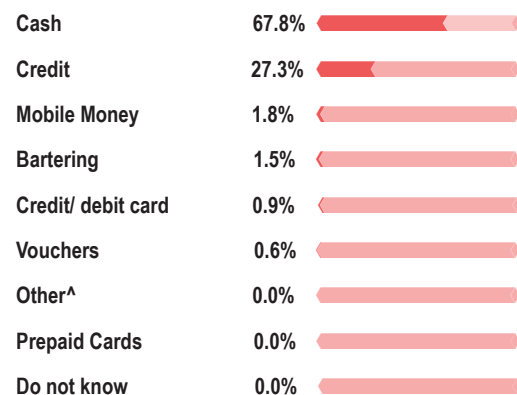
^Includes increased currency fluctuations, lack of oil derivatives, and additional fees.



*Red outlines over districts indicate the districts for which outliers were recorded.

Food SMEB*

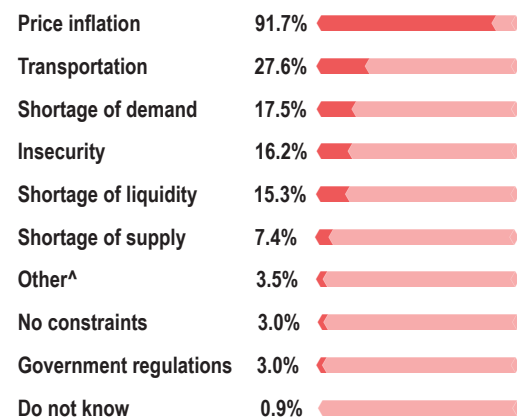
Food vendor KIs reported accepting the following payment modalities*



*Values do not add up to 100% as vendor KIs were allowed to select multiple options.

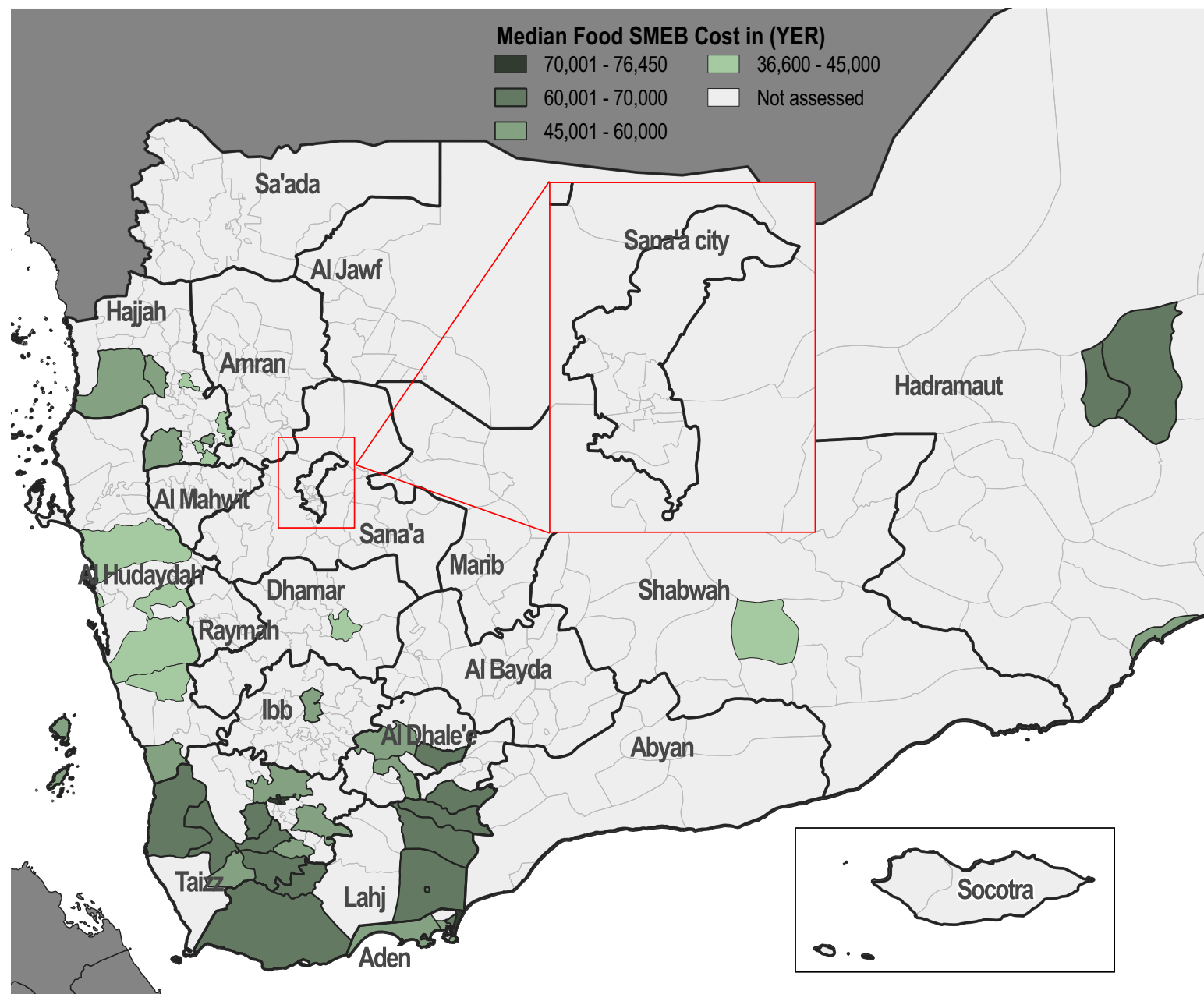
^Includes bank transfers.

Most commonly reported constraints, by % of food vendor KIs*



*Values do not add up to 100% as vendor KIs were allowed to select multiple options.

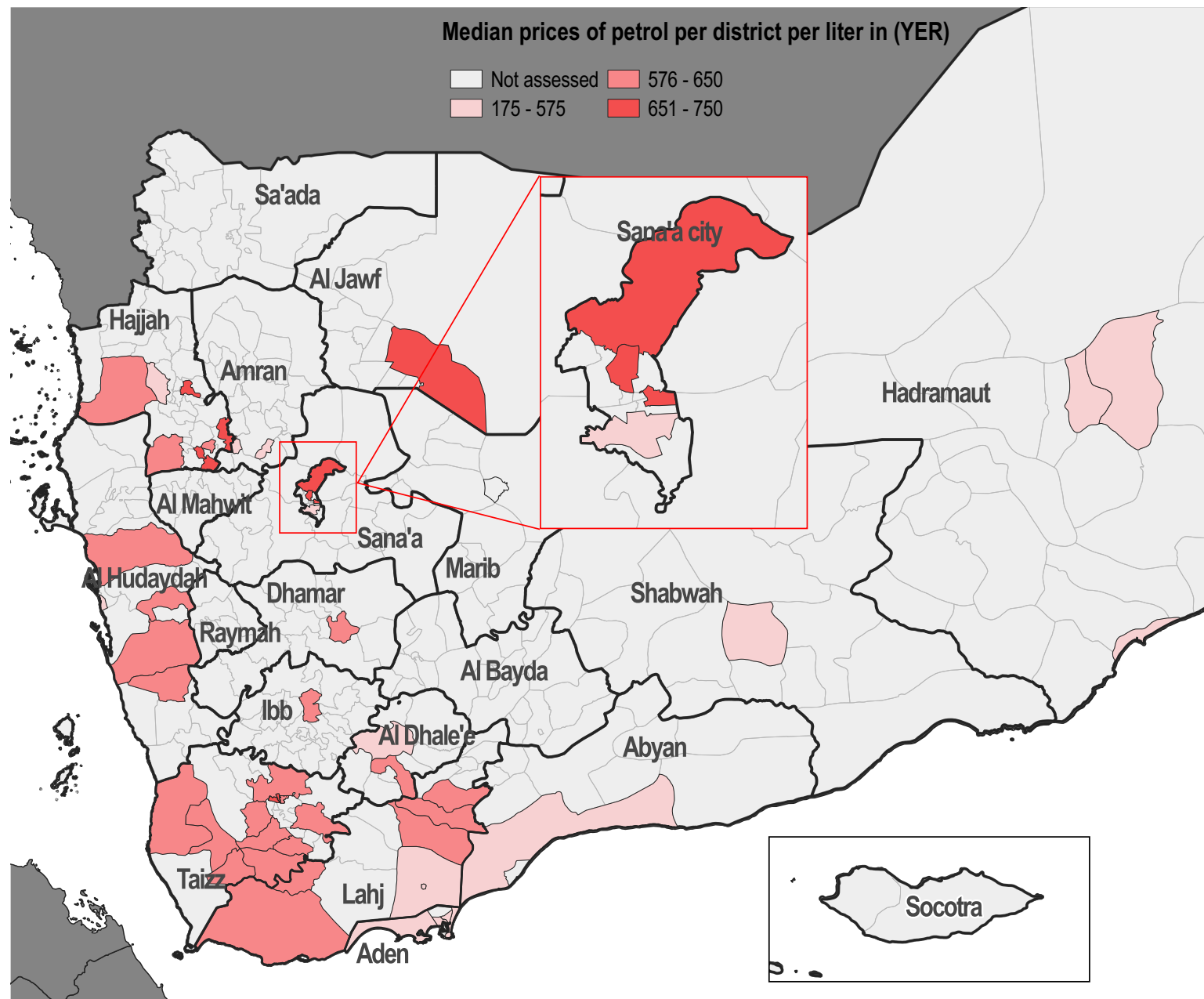
^Includes increased currency fluctuations, lack of oil derivatives, and additional fees.



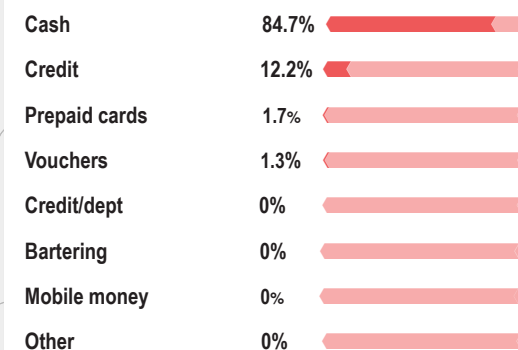
*Total SMEB cost in the legend represents the calculated food basket cost with dry beans.

Median prices of petrol per district per liter in (YER)

Not assessed 576 - 650
175 - 575 651 - 750

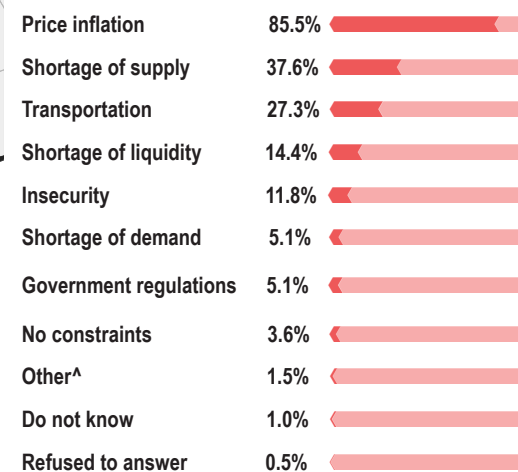


Fuel vendor KIs reported accepting the following payment modalities*



*Values do not add up to 100% as vendor KIs were allowed to select multiple options.

Most commonly reported constraints, by % of fuel vendor KIs*



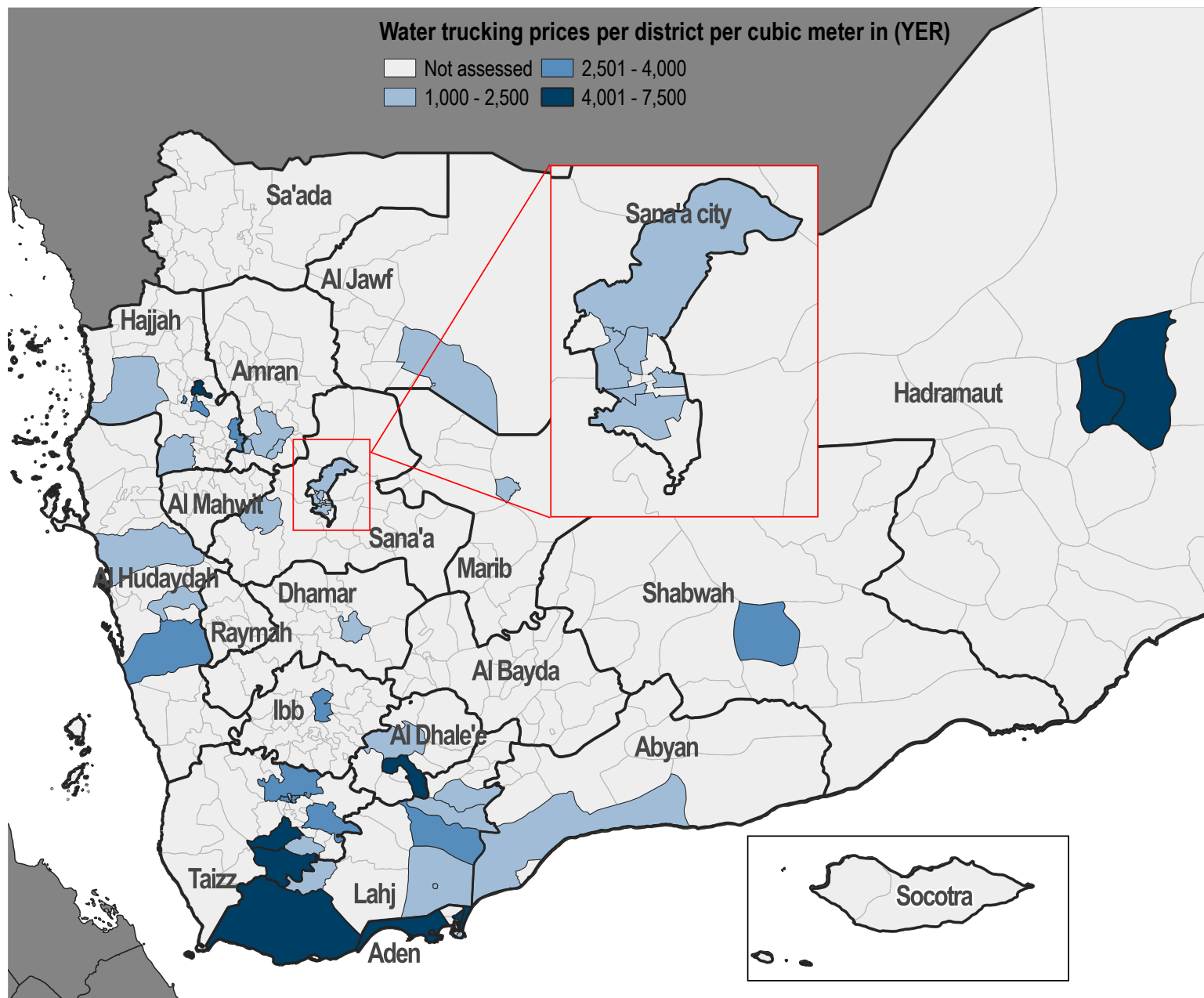
*Values do not add up to 100% as vendor KIs were allowed to select multiple options.

[^]Includes increased currency fluctuations, loss of vendors in the area, and additional fees.

Water Trucking

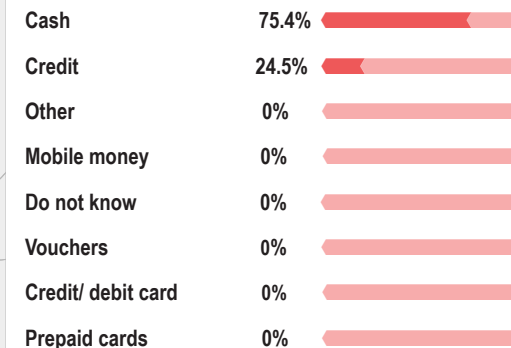
Water trucking prices per district per cubic meter in (YER)

Not assessed 2,501 - 4,000
1,000 - 2,500 4,001 - 7,500



Red outlines over districts indicate the districts for which outliers were recorded.

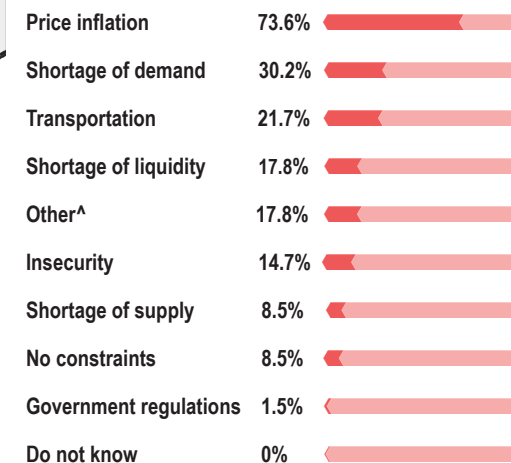
Water trucking vendor KIs reported accepting the following payment modalities*



*Values do not add up to 100% as vendor KIs were allowed to select multiple options.

^Includes bank transfers.

Most commonly reported constraints, by % of water trucking vendor KIs*



*Values do not add up to 100% as vendor KIs were allowed to select multiple options.

^Includes increased currency fluctuations, loss of vendors in the area, and additional fees.

SUPPLY CHAIN OVERVIEW FOR YEMEN

Median price of goods originating from Aden and al Hudaydah

Vendor KIs were asked about the origin of various products sold in their stores. The two main ports of origin for these products were Aden and al Hudaydah. The table below shows the median price of goods originating from these two ports.

Item	Al Hudaydah (price in YER)	Aden (price in YER)
Petrol (1L)	625	600
Diesel (1L)	650	600
Cooking Gas (1 cylinder)	10000	5500
Bottled water (0.75L)	150	200
Treated water (10L)	100	100
Bleach (1L)	550	1000
Soap (100g)	150	200
Laundry Powder (100g)	130	200
Sanitary Napkins (10 units)	500	700
Water trucking (1m ³)	3250	2500
Wheat Flour (1kg)	300	500
Rice (1kg)	800	1200
Beans Dry (1kg)	500	1900
Beans Can (15oz can)	300	450
Lentils (1kg)	550	1100
Vegetable Oil (1L)	1000	1700
Sugar (1kg)	400	600
Salt (1kg)	200	150
Potatoes (1kg)	350	450
Onions (1kg)	200	300

Average reported restocking time (days)*^

Governorate	Fuel Items	WASH Items	Food Items
Abyan	3 (3)	4 (3)	4 (3)
Aden	2 (4)	3 (3)	2 (2)
Al Dhale'e	3 (5)	4 (3)	2 (6)
Al Hudaydah	8 (7)	8 (15)	10 (10)
Al Jawf	6 (6)	6 (5)	4 (4)
Amran	5 (30)	3 (3)	3 (5)
Dhamar	2	0 (1)	1 (1)
Hadramaut	6 (6)	5 (10)	9 (6)
Hajjah	6 (8)	9 (6)	7 (6)
Ibb	3	0 (3)	3 (5)
Lahj	6 (7)	6 (7)	8 (5)
Marib	3 (2)	3 (4)	5 (5)
Sana'a	2 (5)	14 (2)	2 (2)
Sana'a City	2 (3)	2 (2)	3 (2)
Shabwah	2 (2)	1 (2)	1 (2)
Taizz	5 (4)	4 (5)	5 (4)

*Previous average restocking time (May 2021) in days between brackets.
^N/A indicates that the specific question was not answered by the KIs.

Vendor capacity to respond to a sudden increase in demand: Proportion of vendors able to absorb a 50% and 100% increase in demand for key items*

To understand vendor capacity to cope with sudden increases in the demand for water trucking, fuel, and WASH items, vendor KIs were asked if they would be able to increase their stock by 50% and 100% respectively.

Effect of supply route changes on businesses

Overall, 15.5% of vendor KIs (36/232) reported having faced supply chain disruptions in the 30 days prior to data collection. Those vendors were asked which supply chain issues they had faced (see graph on the right).

Most commonly reported supply chain issues*

Damage to market facility	68.5%
Movement restriction	34.3%
Damage to market area	28.5%
Other	20.0%

*Values do not add up to 100% as vendor KIs were allowed to select multiple options.

^Other includes: "Lack of oil derivatives" and "high exchange USD/YER rate".

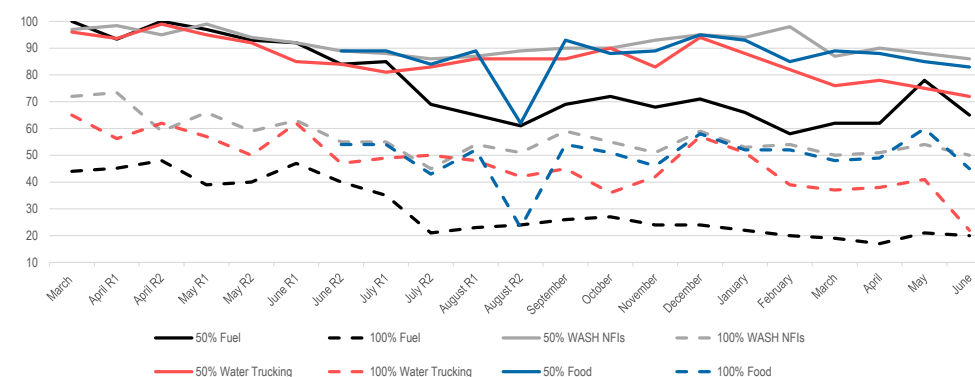
Damaged infrastructure affecting vendor capacity to conduct business

The 28 vendor KIs who reported "damage to the market area" and/or "damage to the market facility" as concerns affecting their capacity to run their businesses were then asked which type of infrastructure was most damaged.

Most commonly reported infrastructure damage*

Road	93.3%
Electrical	86.6%
Water	86.6%
Communication	0%

*Values do not add up to 100% as vendor KIs were allowed to select multiple options.



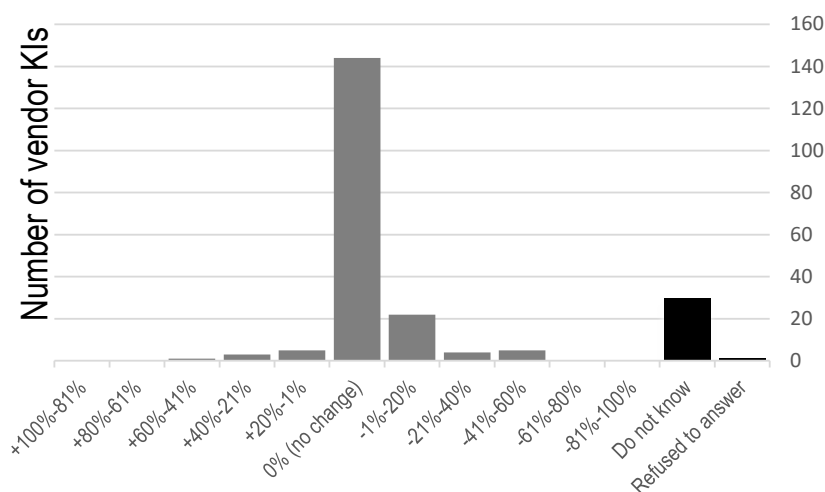
*Between April and August 2020, two rounds of data collection were held each month to monitor the foreseen more rapid changes as a result of the COVID-19 pandemic and restrictions

Impact of COVID-19 on respondents' businesses

Reported estimated change in number of customers in the two weeks prior to data collection

Overall, over half of vendor KIs (66.8%) reported having perceived no change in the number of customers in the two weeks prior to data collection. Less vendors reported having experienced a change in the number of customers, be it either a decrease (14.6% or 34/232 vendors) or increase (3.5%, or 8/232 vendors) of customers.

Of the 232 vendor KIs surveyed, 4.3% (10/232) reported having faced difficulties obtaining key commodities due to disruptions caused by COVID-19 measures in the two weeks prior to data collection (compared to 4.7% reporting this during previous round of data collection in May).



Average number of businesses closures by governorate^

The reported number of businesses within a 2 minute walk from vendor KIs' stalls being closed in the two weeks prior to data collection (72 businesses) decreased by 53% compared to the last round of data collection in May (135 businesses).



Average reported number of nearby businesses that were open in March 2020*

8.8

*Average number of businesses within a two minute walk from KIs' businesses that were open in early March 2020, as reported by vendors in June 2021.

Average reported number of nearby businesses that were closed in June 2021^

0.32

^Average number of businesses within a two minute walk from KIs' businesses that were reportedly closed due to COVID-19 in the two weeks prior to data collection.

Average reported number of nearby businesses that were closed in May 2021^

0.5

^Average number of businesses within a two minute walk from KIs' businesses that were reportedly closed due to COVID-19 in the two weeks prior to data collection.

Top 3 COVID-19 related constraints*

Shortage of supply	90.0%
Availability of goods	60.0%
Transportations	40.0%

Results from the previous JMIMI round (2 - 6 May)

Shortage of supply	71.4%
Transportations	47.6%
Availability of goods	28.5%

*Based on the responses from the 4.3% (10 out of 232) of vendor KIs who had difficulties obtaining goods due to COVID-19.

Top 3 most difficult goods to obtain^

Petrol	40.0%
Diesel	40.0%
Sanitary napkins	40.0%

Results from the previous JMIMI round (2 - 6 May)

Vegetable oil	42.7%
Suger	33.3%
Wheat flour	28.5%
Cooking gas	28.5%

^Based on the responses from the 4.3% (10 out of 232) of vendor KIs who had difficulties obtaining goods due to COVID-19.

ABOUT REACH'S COVID-19 RESPONSE

As an initiative deployed in many vulnerable and crisis-affected countries, REACH is deeply concerned by the devastating impact the COVID-19 pandemic may have on the millions of affected people we seek to serve. REACH works with Cash Working Groups and Partners to provide up-to-date evidence to inform the humanitarian responses in the countries where we operate. COVID-19-relevant market monitoring and market assessments are a key area where REACH aims to leverage its existing expertise to help humanitarian actors understand the impact of changing restrictions on markets and trade. Updates regarding REACH's response to COVID-19 can be found in [a devoted thread](#) on the REACH website. Contact geneva@impact-initiatives.org for further information.

DISTRICTS COVERED

Governorate	District	Petrol price	Water Trucking	SMEB WASH	SMEB Food	SMEB Total	Fuel: Supplier Governorate	Fuel: Total number of respondents^	WASH: Supplier Governorate	WASH: Total number of respondents^	Food: Supplier governorate	Food: Total number of respondents^
Hajjah	Abs	613	2500	15013	47173	62185	5/6	Al Hudaydah	4/6	Al Hudaydah	3/6	Al Hudaydah
Al Dhale'e	Ad Dhale'e	590	5000	26900	57513	84413	6/8	Aden	5/5	Al Dhalee	9/5	Al Dhalee
Lahj	Al Hawtah	560	1600	15260	61625	76885	3/3	Aden	3/3	Aden	3/3	Aden
Taizz	Al Mukha	620	NA	18601	63825	82426	3/3	Aden	3/3	Aden	3/3	Aden
Aden	Al Buraiqeh	560	7500	33750	57675	91425	5/5	Aden	5/5	Aden	5/5	Aden
Al Hudaydah	Al Hawak	575	NA	18865	39850	58715	NA	NA	NA	NA	NA	NA
Sana'a	Al Haymah Ad	NA	1375	11111	NA	NA	1/1	Al Hudaydah	3/3	Sanaa	3/3	Sanaa
Al Jawf	Al Hazm	750	2000	22025	NA	NA	3/3	Marib	3/3	Sanaa	3/3	Sanaa
Al Hudaydah	Al Khawkhah	NA	NA	20650	55285	75935	NA	NA	1/1	Aden	3/1	Aden
Taizz	Al Ma'afer	650	4000	22200	66075	88275	6/9	Aden	6/9	Aden	3/9	Aden
Lahj	Al Madaribah Wa	600	5000	24775	63700	88475	3/3	Aden	3/3	Aden	3/3	Aden
Ibb	Al Makhadir	600	3000	17330	51750	69080	NA	NA	3/3	Ibb	3/3	Ibb
Aden	Al Mansura	560	NA	17036	55313	72349	3/3	Aden	3/3	Aden	2/3	Aden
Lahj	Al Maqatirah	600	2000	16520	64325	80845	3/3	Aden	3/3	Aden	3/3	Aden
Taizz	Al Mawasit	650	4000	22700	55200	77900	6/9	Taizz	6/9	Aden	5/9	Aden
Lahj	Al Milah	600	3000	18050	65200	83250	3/3	Lahj	3/3	Lahj	3/3	Lahj
Taizz	Al Mudhaffar	700	2666	17998	71750	89748	3/3	Aden	3/3	Aden	3/3	Aden
Hadramaut	Al Mukalla City	500	NA	31925	52400	84325	3/3	Hadramaut	3/3	Hadramaut	3/3	Hadramaut
Taizz	Al Qahirah	700	2666	17998	71750	89748	3/3	Aden	3/3	Aden	3/3	Aden
Taizz	Al Wazi'iyah	640	4000	22200	58992	81192	6/6	Aden	6/6	Aden	6/6	Aden
Amran	Amran	550	1900	12938	NA	NA	1/1	Al Hudaydah	6/6	Sanaa	3/6	Sanaa
Sana'a City	As Sabain	575	1600	11600	NA	NA	3/3	Amanat Al Asimah	3/6	Sanaa	3/6	Sanaa
Al Hudaydah	As Sukhnah	600	2500	14600	38400	53000	3/3	Al Hudaydah	3/3	Al Hudaydah	3/3	Al Hudaydah
Aden	Ash Shaikh	560	1000	11750	63975	75725	3/3	Aden	3/3	Aden	3/3	Aden
Taizz	Ash Shamayatayn	640	7000	31900	62150	94050	5/10	Taizz	6/9	Taizz	6/9	Taizz
Al Dhale'e	Ash Shu'ayb	NA	NA	22583	60685	83268	NA	NA	3/3	Aden	4/3	Aden
Hajjah	Aslem	575	NA	15075	46990	62065	NA	NA	NA	NA	NA	NA
Taizz	At Ta'iziyah	600	3000	17150	47600	64750	NA	NA	3/3	Taizz	3/3	Taizz
Shabwah	Ataq	500	2600	16040	42313	58353	3/3	Marib	2/3	Sanaa	2/3	Hadramaut
Sana'a City	Ath'thaorah	700	1333	10774	NA	NA	2/3	Sanaa	3/3	Sanaa	3/3	Sanaa
Sana'a City	Az'zal	700	1333	11174	NA	NA	3/3	Sanaa	3/3	Sanaa	3/3	Sanaa
Al Hudaydah	Bajil	600	4000	19075	36600	55675	3/3	Al Hudaydah	3/3	Al Hudaydah	3/3	Al Hudaydah
Hajjah	Bani Al Awam	700	NA	14700	39925	54625	3/3	Sanaa	2/3	Hajjah	2/3	Amanat Al Asimah
Sana'a City	Bani Al Harith	700	1333	11774	NA	NA	3/3	Sanaa	3/3	Sanaa	3/3	Sanaa
Hajjah	Bani Qa'is	650	2500	14950	47375	62325	3/3	Al Hudaydah	3/3	Al Hudaydah	3/3	Al Hudaydah
Al Hudaydah	Bayt Al Faqiah	625	4000	19275	38175	57450	6/6	Al Hudaydah	6/6	Al Hudaydah	6/6	Al Hudaydah
Aden	Craiter	560	1400	14470	55429	69899	3/3	Aden	3/3	Aden	3/3	Aden
Dhamar	Dhamar City	650	NA	NA	40900	NA	NA	NA	3/3	Dhamar	2/3	Dhamar
Taizz	Dimnat Khadir	588	3000	17550	51450	69000	NA	NA	3/3	Taizz	3/3	Taizz
Lahj	Habil Jabr	590	2000	15450	64100	79550	3/3	Aden	3/3	Aden	3/3	Aden

CONT.

Governorate	District	Petrol price	Water Trucking	SMEB WASH	SMEB Food	SMEB Total	Fuel: Supplier Governorate	Fuel: Total number of respondents^	WASH: Supplier Governorate	WASH: Total number of respondents^	Food: Supplier governorate	Food: Total number of respondents^
Hajjah	Hajjah City	600	NA	17100	48500	65600	3/3	Al Jawf	3/3	Amanat Al Asimah	2/3	Amran
Taizz	Jabal Habashy	625	NA	19161	66950	86111	3/3	Lahj	2/2	Taizz	1/1	Taizz
Amran	Jabal Iyal Yazid	NA	1300	10350	NA	NA	0/	NA	3/3	Amran	3/3	Amran
Abyan	Khanfir	565	2000	14812	NA	NA	3/3	Aden	4/5	Abyan	4/5	Abyan
Aden	Khur Maksar	560	4000	21200	70575	91775	3/3	Aden	3/3	Aden	3/3	Aden
Hajjah	Kuhlan Affar	700	3000	15925	40100	56025	NA	NA	3/3	Amran	3/3	Amran
Hajjah	Kuhlan Ash Sharaf	700	5000	22975	40850	63825	3/3	Sanaa	3/3	Hajjah	3/3	Hajjah
Sana'a City	Ma'ain	NA	1100	10245	NA	NA	NA	NA	3/3	Sanaa	3/3	Sanaa
Marib	Marib City	175	1000	NA	NA	NA	2/3	Marib	2/3	Marib	3/3	Marib
Taizz	Mawza	620	NA	17599	63825	81424	3/3	Aden	3/3	Aden	3/3	Aden
Hajjah	Najrah	725	2000	13175	42700	55875	2/3	Al Hudaydah	3/3	Al Hudaydah	3/3	Al Hudaydah
Al Dhale'e	Qa'atabah	575	4000	21906	58290	80196	6/6	Aden	5/5	Aden	8/8	Aden
Lahj	Radfan	590	1500	12350	62135	74485	3/3	Aden	3/3	Aden	3/3	Aden
Taizz	Salh	650	2500	17475	76450	93925	3/3	Aden	3/3	Aden	3/3	Aden
Hadramaut	Sayun	500	5000	25437	65825	91262	3/3	Hadramaut	3/3	Hadramaut	3/3	Hadramaut
Hadramaut	Tarim	500	4000	21750	62690	84440	3/3	Hadramaut	3/3	Hadramaut	3/3	Hadramaut
Lahj	Tuban	560	2000	15925	68950	84875	2/3	Lahj	2/3	Lahj	2/3	Lahj
Al Hudaydah	Zabid	600	NA	19925	42925	62850	3/3	Al Hudaydah	3/3	Al Hudaydah	3/3	Al Hudaydah

^If the number is 4/10 (e.g), this indicates that 10 vendor KIs were interviewed, and of this, 4 answered the supply question.

The supplier governorate indicates the most prevalent answer. In the case of a tie, both governorates are shown.

*The table shows SMEB values and supply chains inside the same governorate and towards other governorates. Districts without a main supplier are those districts where vendor KIs could not identify the origin of the items they sold.

APPENDIX

What is the cash and markets working group (CMWG)?

With the emergence of the conflict in 2014, humanitarian actors in Yemen began using cash and vouchers as a response tool to meet the immediate needs of the Yemeni population. The CMWG was established to provide a platform for discussion and setting standards/recommendations on cash and market-based responses (inclusive of cash and vouchers) for the cash actors in Yemen. The JMIMI was developed by the CMWG, the WASH Cluster, and REACH in order to harmonize price monitoring amongst WASH actors in Yemen.

Additional information on methodology

To be assessed by the JMIMI, markets must be either a single permanent market, or a local community where multiple commercial areas are located in close proximity to one another. When possible, markets/shops are selected within a single geographical location, where there is at least one wholesaler operating in the market.

Participating organisations train their enumerators on the JMIMI methodology and data collection tools using standard training materials developed by REACH. Each month, enumerators conduct KI interviews with market vendors to collect three price quotations for each item from the same market in each district. In addition to price levels, vendors are asked about the location of their supplier, the number of days it takes to restock the items, and the constraints they are facing in purchasing and selling the items in question. Additional questions are included for water trucking, to gauge the impact of delivery distance upon price level.

Following data collection, REACH compiles and cleans all partner data, normalising prices and cross-checking outliers. The cleaned data is then analysed by commodity and by governorate. To illustrate local variations in prices and availability, REACH uses the collected data to map the price of each type of item in each district. REACH also calculates the WASH SMEB (Survival Minimum Expenditure Basket), which is composed of four items: soap (1.05 kg), laundry powder (2 kg), sanitary napkins (50 units) and water trucking (3.15 m3). Food SMEB contains 75 kg of wheat flour, 10 kg of beans (kidney), 8L of vegetable oil, 2.5 kg of sugar, and 1 kg iodized salt.

The cleaned data sets are available on the [REACH Resource Centre](#) and are distributed to all participating partners, as well as to relevant clusters and the broader humanitarian community.

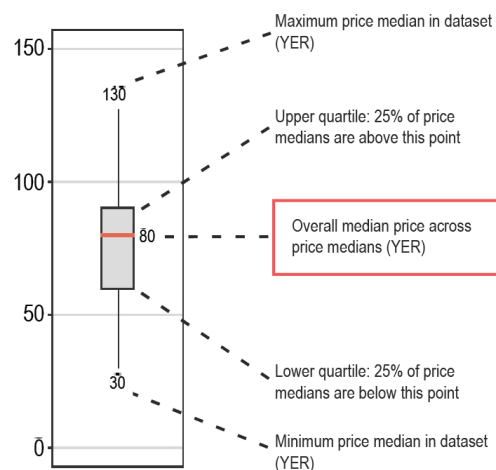
Limitations

Due to issues of access and security across Yemen, the districts included in the JMIMI vary on a monthly basis, and as such there are sometimes a limited number of districts for which trends can be assessed over time. Governorate level data is aggregated from the respective districts assessed in a given month, and so the findings are not representative of individual markets. Finally, the market monitoring process has been coordinated remotely by REACH, which inherently presents some challenges in terms of coordination and follow-up with partners. Participating organisations are therefore requested to adopt harmonised data collection methodologies and tools to ensure that the data uploaded is as accurate as possible.

Calculation of district and governorate median price

District, governorate and national median prices are calculated using data from all assessed markets. Percentage changes from one month to another are calculated only on data from markets that were assessed in both consecutive months. Therefore, part of the percentage variation could be attributed to changes in monthly coverage.

How to read a box plot



ABOUT REACH

REACH is a joint initiative that facilitates the development of information tools and products that enhance the capacity of aid actors to make evidence-based decisions in emergency, recovery and development contexts. By doing so, REACH contributes to ensuring that communities affected by emergencies receive the support they need. All REACH activities are conducted in support to and within the framework of inter-agency aid coordination mechanisms. For more information, please visit our website at www.reach-initiative.org, contact us directly at ahmet.damar@reach-initiative.org or follow us on Twitter at [@REACH_info](https://twitter.com/REACH_info).

Participating partners include



Number of districts assessed per governorate

Governorate	Assessed districts
Abyan	1
Aden	5
Al Dhale'e	3
Al Hudaydah	6
Al Jawf	1
Amran	2
Dhamar	1
Hadramaut	3
Hajjah	8
Ibb	1
Lahj	7
Marib	1
Sana'a	1
Sana'a City	5
Shabwah	1
Taizz	12