



INTRODUCTION

The Yemen Joint Market Monitoring Initiative (JMMI) was launched by REACH in collaboration with the Water, Sanitation, and Hygiene (WASH) Cluster and the Cash and Market Working Group (CMWG) to support humanitarian actors with the harmonization of price monitoring among all cash actors in Yemen. The JMMI incorporates information on market systems including price levels and supply chains. The basket of goods to be assessed comprises eight non-food items (NFIs), including fuel, water and hygiene products, reflecting the programmatic areas of the WASH Cluster. Since September 2018, the JMMI tracks all components of the WASH Survival Minimum Expenditure Basket (SMEB).

METHODOLOGY

Data was collected through interviews with vendor Key Informants (KIs), selected by partner organisations from markets of various sizes in both urban and rural areas.

The data collected has been analysed in comparison with the price quotations recorded during the Multi-Agency Joint Cash Study conducted in September 2017, and the Weekly Price Monitoring Initiative (WPMI) which was conducted during the economic blockade of Yemen in November 2017.

More details are available in the Methodology section of the appendix. Findings are indicative for the assessed locations and time frame in which the data was collected.

JMMI MONTHLY FIGURES

Data collection **21-30 November 2018**

- 15 Participating partners
- 64 Districts assessed
- 353 Vendor KIs surveyed

KEY FINDINGS

The value of the US dollar exchange rate registered on the parallel market was 540 YER, showing a depreciation of 27.5% compared to the value registered in October.

250 USD/YER Official ► 0.0%	540 USD/YER Parallel market ▼ 27.5%	745 USD/YER Parallel market October 2018
---	---	---

KEY PRICE FIGURES

The depreciation was accompanied by an overall decrease in the median price of assessed items. Treated water and water trucking experienced the greatest decrease: 22.6% and 24.1% respectively.

Petrol Price	550 YER	▼ 6.0%
Diesel Price	550 YER	▼ 5.2%
Bottled Water Price	150 YER	► 0.0%
Treated Water Price	135 YER	▼ 22.6%

WASH SMEB FIGURES

The median cost for the WASH SMEB was 10,060 YER, with a reduction of 14% compared to the cost observed in October.

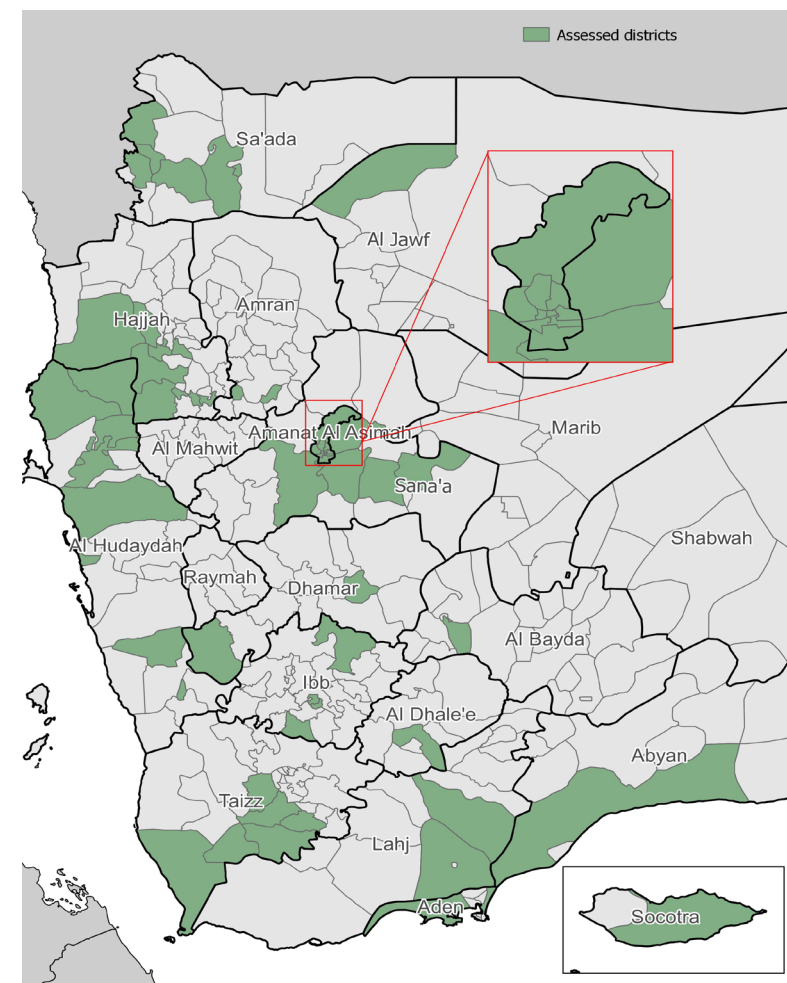
November	10,060 YER	▼ 1,636 - 14%
-----------------	-------------------	----------------------

SUPPLY OVERVIEW

Despite the overall reduction in prices, the districts supplied by the governorate of al Hudaydah showed higher prices compared to those supplied by the governorate of Aden.

The median restocking time reported by fuel vendor KIs was 5 days compared to 7 days reported in October, and WASH items median restocking time was 3 days compared to 4 days as reported in October.

ASSESSED DISTRICTS



WASH SMEB

OTHER ASSESSED ITEMS

Soap	1.05 kg	Petrol	1 liter
Laundry powder	2 kg	Diesel	1 liter
Sanitary napkins	20 units	Treated water	10 liter
Water trucking	3.15 m ³	Bottled water	0.75 liter

WASH SMEB COST OVERVIEW

The **WASH Survival Minimum Expenditure Basket (SMEB)** represents the minimum culturally adjusted group of WASH items required to support a Yemeni family of eight for a month.

The cost of the WASH SMEB can be used as a proxy for the financial burdens, relative to WASH items, a household is facing in different locations. The WASH SMEB components were defined by the CMWG in consultation with relevant sector leads.

MEDIAN COST OF WASH SMEB

10,060 YER

Change since
October 2018

▼ 1,636 -14%

Change since
September 2017

▲ 5,037 +100.3%

PAYMENT MODALITIES ACCEPTED*

Cash	100%	████████████████████
Credit	3%	████████████████
Bartering	3%	████████████████
Mobile money	2%	██████████████
Credit/Debit cards	1%	██████████

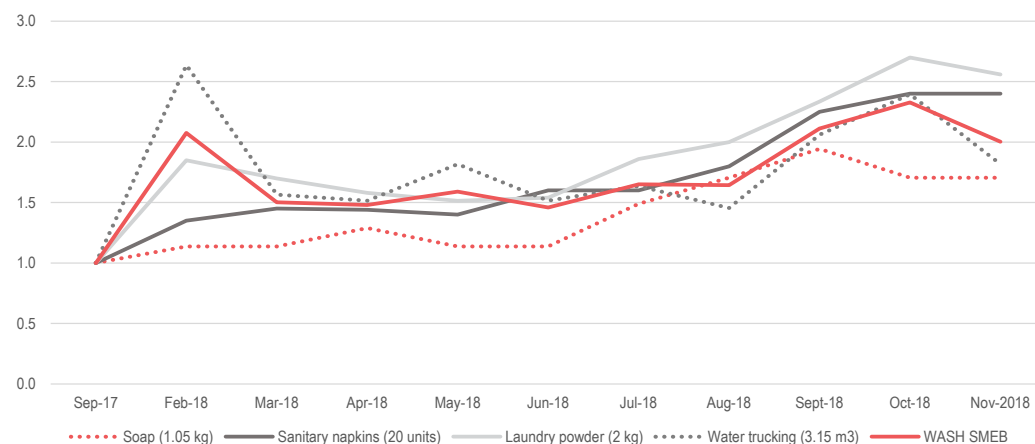
* Payment modalities can add up to more than 100%

MEDIAN WASH SMEB PRICES, BY GOVERNORATE (IN YER)

Governorate	Soap (10.5 kg)	Laundry powder (2 kg)	Sanitary napkins (20 units)	Water trucking (3.15 m³)	WASH SMEB Nov-18	Change since Oct-18
Abyan	1,575	2,000	1,100	6,300	10,975	+2%
Aden	1,800	3,318	1,225	9,450	15,793	-33%
al Bayda	1,260	3,300	1,090	6,615	12,265	-17%
al Dhale'e	1,050	2,000	1,100	7,875	12,025	-29%
al Hudaydah	1,800	2,600	1,000	6,300	11,700	+24%
al Jawf	1,654	2,000	1,100	4,725	9,505	-21%
Amanat al Asimah	958	2,600	1,200	4,199	8,957	-5%
Amran	1,440	2,182	1,300	5,670	10,592	8%
Dhamr	1,654	2,550	1,305	4,843	10,352	-47%
Hajjah	1,800	2,600	1,100	4,725	10,225	-22%
Ibb	1,680	2,400	900	7,560	12,540	+4%
Laj	1,800	1,818	900	5,513	10,031	+36%
Raymah	1,218	2,139	1000	9,450	13,807	NA
Sa'ada	1,484	2,600	1,250	2,363	7,697	-28%
Sana'a	1,680	2,500	1,200	4,331	9,711	-1%
Socotra	1,260	2,800	1,400	3,780	9,240	-3%
Taizz	1,260	2,100	1,200	6,300	10,860	-23%

WASH SMEB PRICE INDEX

Since September 2017 (normalized, September 2017 = 1.00)



MAIN DISTRICTS MONTH-TO-MONTH CHANGES IN MEDIAN WASH SMEB COST

Aden

October: 23,655 YER
November: 15,793 YER
▼ 33%

al Hudaydah

October: 9,413 YER
November: 11,700 YER
▲ 24%

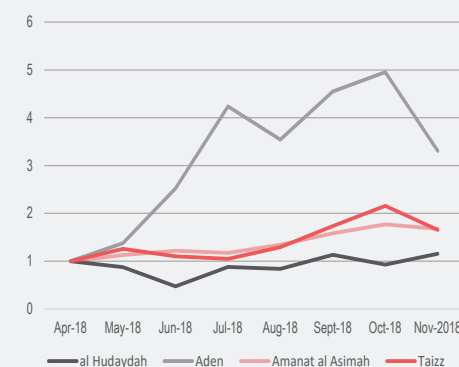
Taizz

October: 14,161 YER
November: 10,860 YER
▼ 23%

Amanath al Asimah

October: 9,449 YER
November: 8,957 YER
▼ 5%

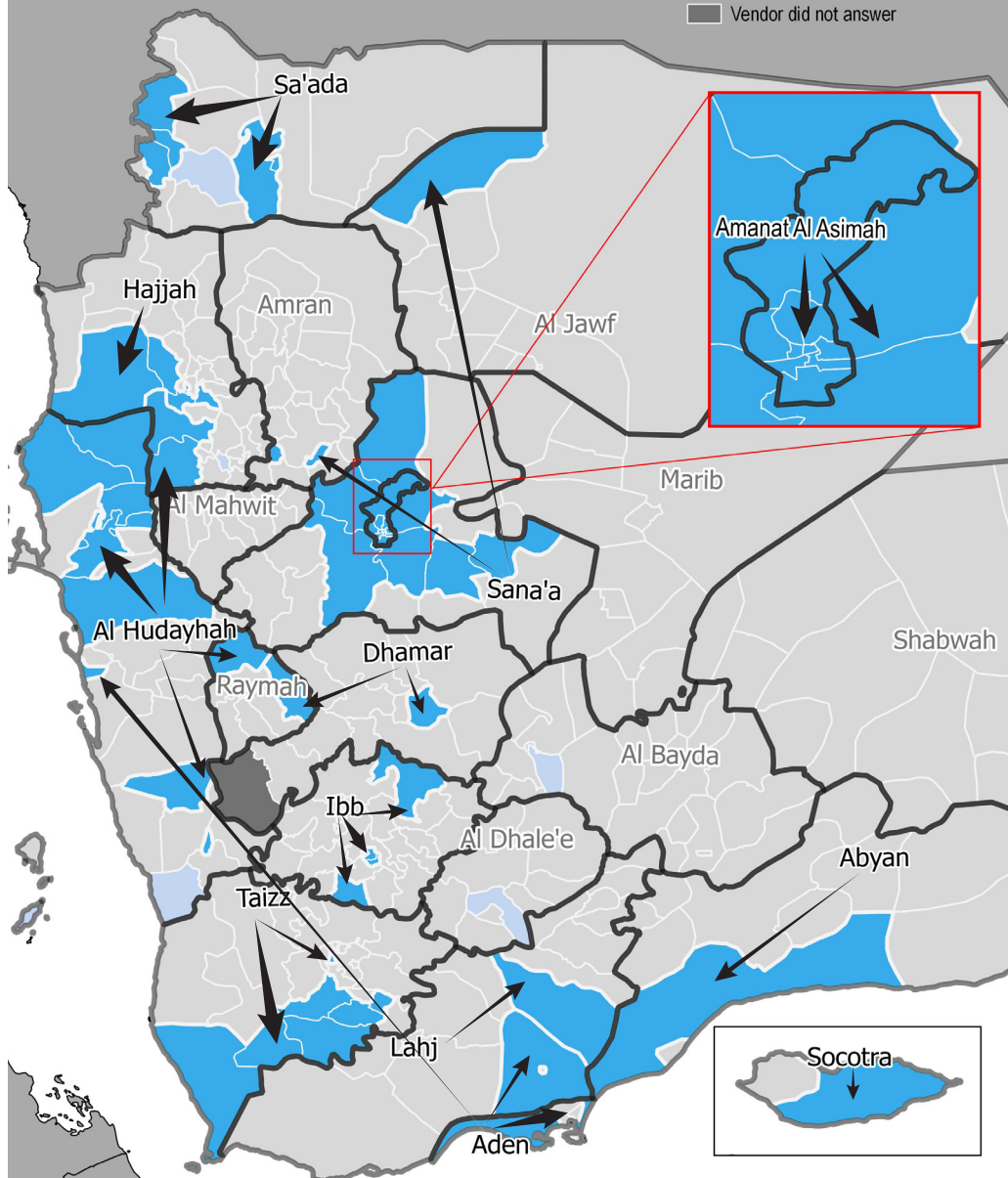
WASH SMEB PRICE TREND (normalized, April 2018 = 1)



WASH SMEB Supply Chain Overview

Supply Destination

- One district supplied
- ➔ Two or more districts supplied
- Light blue square: Districts without a main supplier
- Dark blue square: Districts with a main supplier
- Grey square: Vendor did not answer

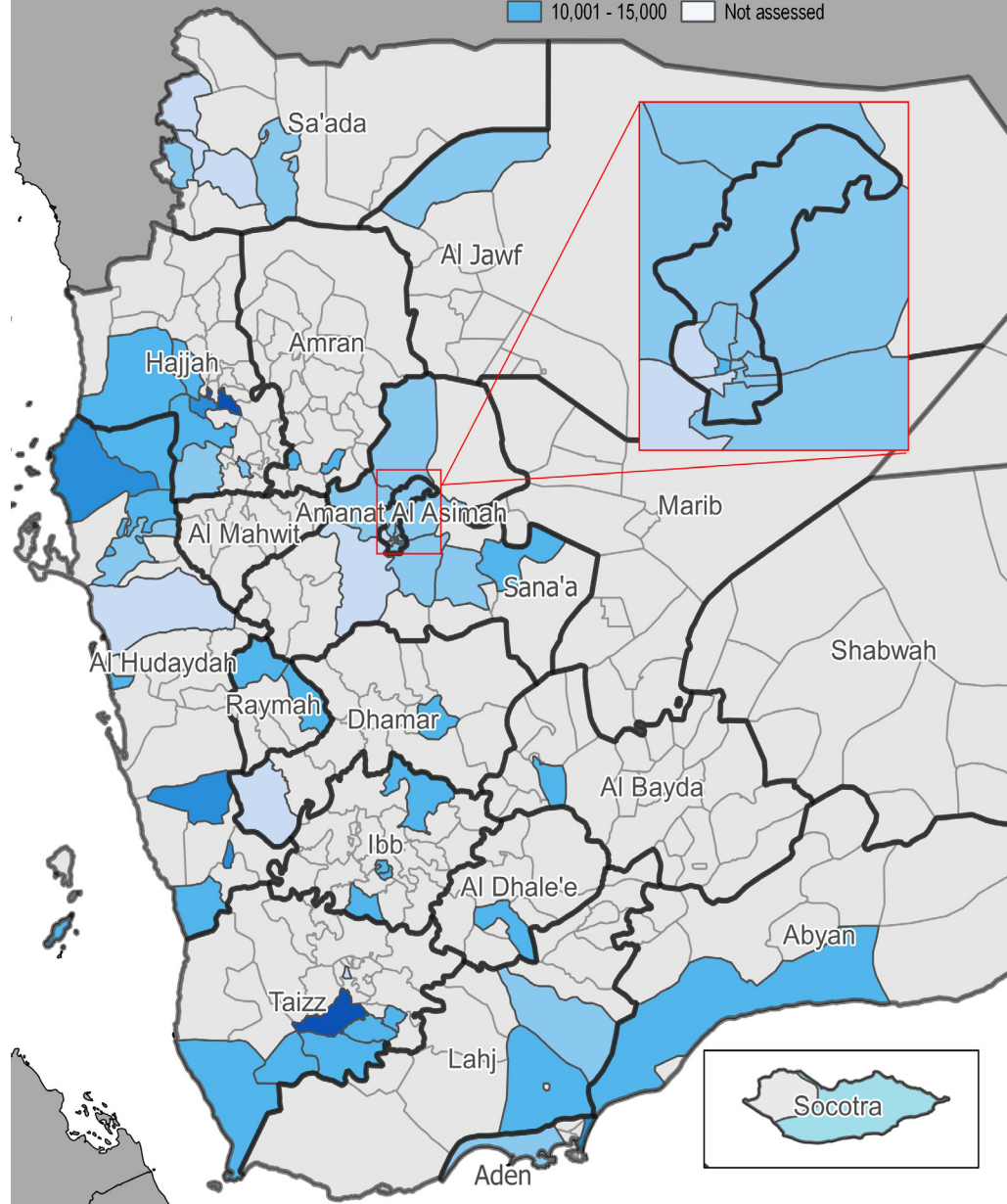


Note: only complete SMEB are taken into account.

Median cost of WASH SMEB Cost

Median WASH SMEB Cost (YER)

- Dark blue square: 25,001 - 31,840
- Medium blue square: 15,001 - 25,000
- Light blue square: 8,001 - 10,000
- Very light blue square: 4,474 - 8,000
- White square: Not assessed



PRICE MONITORING OVERVIEW FOR YEMEN

MEDIAN PRICE LEVELS, PER ITEM, PER MONTH (IN YER)*

Item	September 2017 (baseline)^	November 2017^	August 2018	September 2018	October 2018	November 2018	% Change (Oct-Nov)
Diesel	235	394	400	578	580	550	-5.2%
Petrol	275	349	415	656	585	550	-6.0%
Treated water	NA	175 ↯	123	140	155	120	-22.6%
Bottled water	70	100	115	140	150	150	0.0%
Soap	88	NA	150	171	150	150	0.0%
Sanitary napkins	250	NA	450	563	600	600	0.0%
Laundry powder	50	NA	100	117	135	128	-5.2%
Water trucking	825	1,700	1,200	1,700	1,975	1,500	-24.1%

* Price variations and the percentage change are calculated using data from markets that were assessed in both consecutive months.

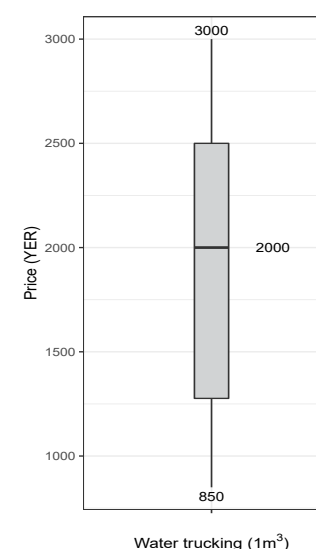
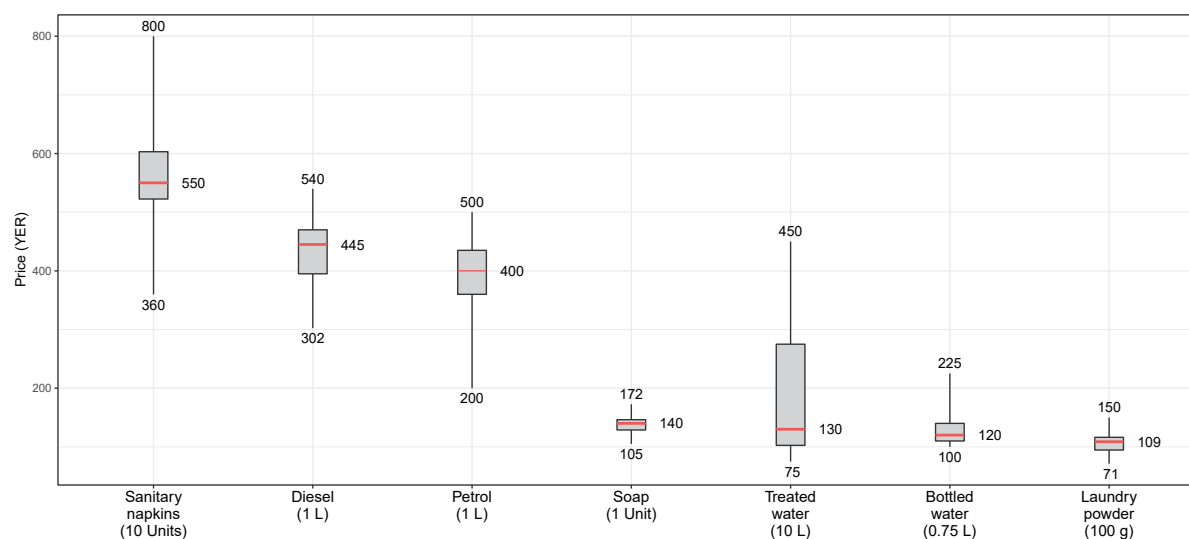
^ Price levels for September 2017 are the price quotations recorded during the Multi-Agency Joint Cash Study, while prices for November 2017 were recorded during the Weekly Price Monitoring Initiative conducted by the WASH Cluster.

↯ Treated water prices for September and November 2017 were for 20L, while the JMMI collects prices for 10L.

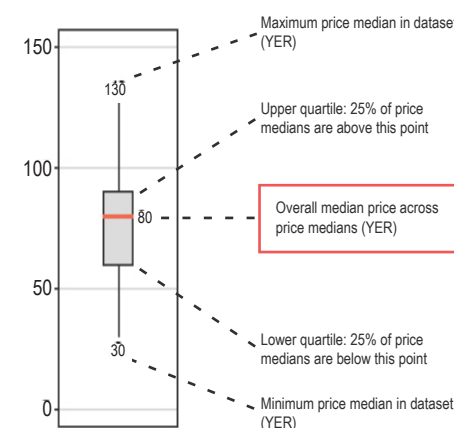
MEDIAN PRICE PER GOVERNORATE (IN YER)

Governorate	Petrol (1L)	Diesel (1L)	Bottled water (0.75L)	Treated water (10L)	Soap (1 Unit)	Laundry powder (100g)	Sanitary napkins (10)	Water trucking (1m³)
Abyan	780	750	150	100	150	100	550	NA
Aden	390	460	150	98	172	166	613	3,000
al Bayda	575	578	225	300	120	165	545	2,100
al Dhale'e	383	368	150	100	100	100	550	2,500
al Hudaydah	575	580	150	100	171	130	500	2,000
al Jawf	500	530	150	300	160	100	550	1,500
Amanat al Asimah	500	530	143	120	91	130	600	1,333
Amran	500	530	130	300	137	109	650	1,800
Dhmar	556	572	123	465	158	128	653	1,538
Hajjah	575	570	150	100	171	130	550	1,500
Ibb	538	555	150	200	160	120	450	2,400
Lahj	445	415	150	50	171	91	450	1,750
Raymah	595	565	150	150	116	107	500	3,000
Sa'ada	578	590	150	150	141	130	625	750
Sana'a	575	580	130	100	160	125	600	1,375
Socotra	300	440	140	NA	120	140	700	1,200
Taizz	425	425	140	118	120	105	600	2,000

DISTRIBUTION OF PRICES ACROSS YEMEN

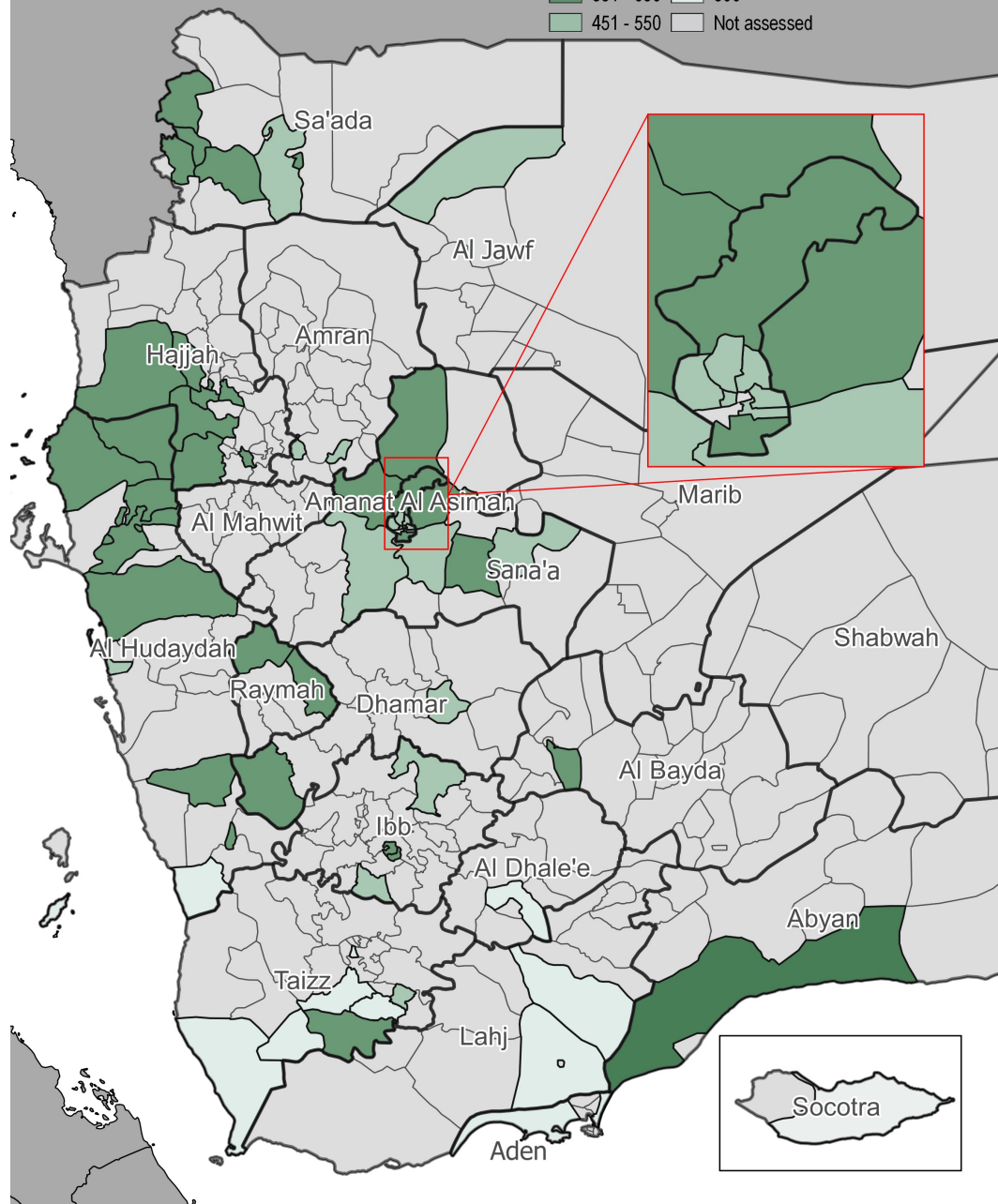


How to read a box plot



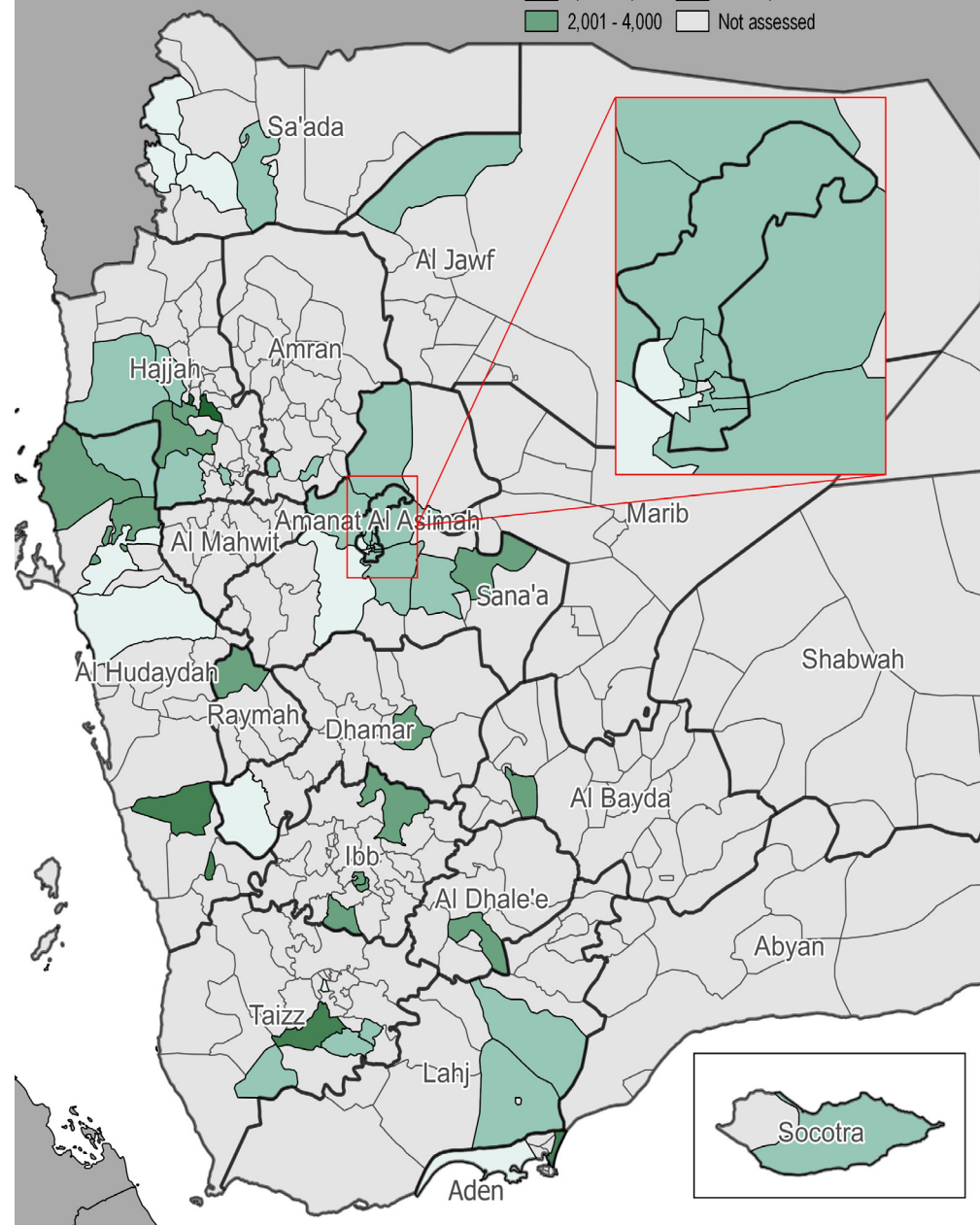
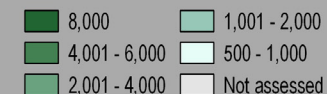
Petrol Prices

Median price of petrol per district per liter (in YER)



Water Trucking Prices

Water Trucking prices per district per cubic meter (YER)



Note: the differences in the number of districts shown between the two maps for fuel and water prices is because the methodology-stipulated requirement for a minimum of three price quotations per market per district was not met.

SUPPLY CHAIN OVERVIEW FOR YEMEN

AVERAGE RESTOCKING TIME (DAYS)

Governorate	Fuel Items	WASH Items
Abyan	7	13
Aden	8	1
al Bayda	8	3
al Dhale'e	9	6
al Hudaydah	8	6
al Jawf	3	3
Amanat al Asimah	4	2
Amran	5	2
Dhamar	3	2
Hajjah	6	4
Ibb	4	9
Lahj	5	2
Raymah	1	2
Sa'ada	10	11
Sana'a	5	2
Socotra	4	2
Taizz	4	4

MOST REPORTED CONSTRAINTS*

Price inflation	92%
Transportation	37%
Liquidity shortage	34%
Insecurity	32%
Shortage of demand	30%
Supply shortage	24%
Government regulations	10%
Other	5%

*Values do not add up to 100% as vendor KIs were allowed to select multiple options.

OVERVIEW FOR WATER TRUCKING

75% of water trucking vendor KIs stated that they charged delivery costs based upon the distance between the water source and delivery point. The additional price for 5km is **7,500 YER**, for 10 km **8,500 YER**.

63% of water trucking vendor KIs stated that they sell non-chlorinated water.

26% of water trucking vendor KIs stated that they sell chlorinated water. An additional **11% reported being unaware if the water they sold was chlorinated.**

89% of water vendor KIs reported sourcing water from a pumping station or a borehole.

3% of water vendor KIs reported sourcing water from treatment station.

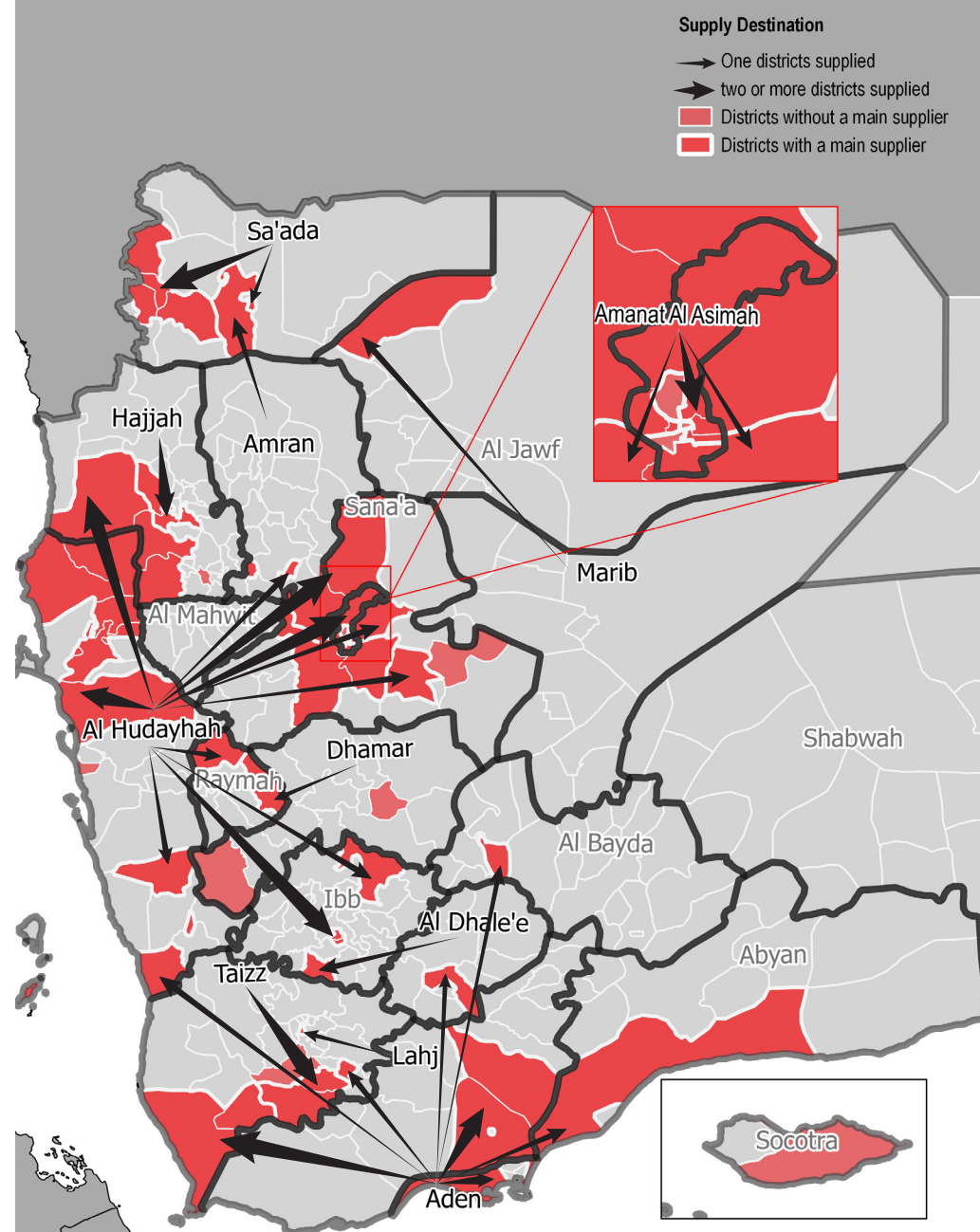
6% of water vendor KIs reported sourcing water from a spring.

CONSTRAINTS AND CHALLENGES

When asked about the top constraints vendors faced in conducting their business, KIs reported price inflation, liquidity shortage, and transportation issues as their three main constraints.

Moreover, vendor KIs reported insecurity and instability, and shortages in demand (with a reduction in customers able to pay) as barriers. The 5% of vendor KIs who selected "others", mentioned fuel availability and fuel cost as their main challenges.

Petrol and Diesel main supply chain overview*



*The map shows fuel supply chain inside the same governorate and towards other governorates. District without a main supplier are those district where vendor KIs could not identify the origin of the fuel they sold.

APPENDIX

WHAT IS THE INTERSECTOR CASH AND MARKET WORKING GROUP?

With the emergence of the conflict in 2014, humanitarian actors in Yemen began using cash and vouchers as a response tool to meet the immediate needs of the Yemeni population. The CMWG was established to provide a platform for discussion and setting standards/recommendations on cash and market-based responses (inclusive of cash and vouchers) for the cash actors in Yemen. The JMMI was developed by the CMWG, the WASH Cluster, and REACH in order to harmonize price monitoring amongst WASH actors in Yemen.

ADDITIONAL INFORMATION ON METHODOLOGY

To be assessed by the JMMI, markets must be either a single permanent market, or a local community where multiple commercial areas are located in close proximity to one another. When possible, markets/shops are selected within a single geographical location, where there is at least one wholesaler operating in the market, or multiple areas of commerce within the same geographical location when it is too small, to provide a minimum of three price quotations per assessed item.

Participating organisations train their enumerators on the JMMI methodology and data collection tools using standard training materials developed by REACH. Each month, enumerators conduct KI interviews with market vendors to collect three price quotations for each item from the same market in each district. In addition to price levels, vendors are asked about the location of their supplier, the number of days it takes to restock the items, and the constraints they are

facing in purchasing and selling the items in question. Additional questions are included for water trucking, to gauge the impact of delivery distance upon price level.

Following data collection, REACH compiles and cleans all partner data, normalising prices and cross-checking outliers. The cleaned data is then analysed by commodity and by governorate. To illustrate local variations in prices and availability, REACH uses the collected data to map the price of each type of item in each district. REACH also calculates the WASH SMEB (Survival Minimum Expenditure Basket), which is composed of four items: soap (1.05 kg), laundry powder (2 kg), sanitary napkins (20 units) and water trucking (3.15 m3). The cleaned data sets are available on the [REACH Resource Centre](#) and are distributed to all participating partners, as well as to relevant clusters and the broader humanitarian community.

LIMITATIONS

Due to issues of access and security across Yemen, the districts included in the JMMI vary on a monthly basis, and as such there are sometimes a limited number of districts for which trends can be assessed over time. Governorate level data is aggregated from the respective districts assessed in a given month, and so the findings are not representative of individual markets. Finally, the market monitoring process has been coordinated remotely by REACH, which inherently presents some challenges in terms of coordination and follow-up with partners. Participating organisations are therefore requested to adopt harmonised data collection methodologies and tools to ensure that the data uploaded is as accurate as possible.

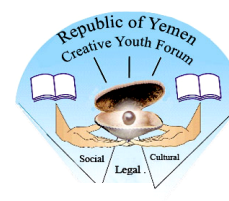
CALCULATION OF DISTRICT AND GOVERNORATE MEDIAN PRICE

The calculation of the aggregated median price for districts and governorates is done following a stepped approach. Firstly, the median of all the price quotation related to the same market is taken. Secondly, the median quotation from each market is aggregated to calculate the district median. Finally, the median quotation from each district is aggregated to calculate the governorate median. Additionally, district and governorate median prices and percentage change from one month to another are calculated only on data from markets that were assessed in both consecutive months.

PARTICIPATING PARTNERS INCLUDE



Tamdeen
Youth Foundation
مؤسسة تمدين شباب



REACH Informing more effective humanitarian action

CMWG | Intersector Cash and Market Working Group



مؤسسة المدينة القديمة للتنمية
Old City Foundation for Development