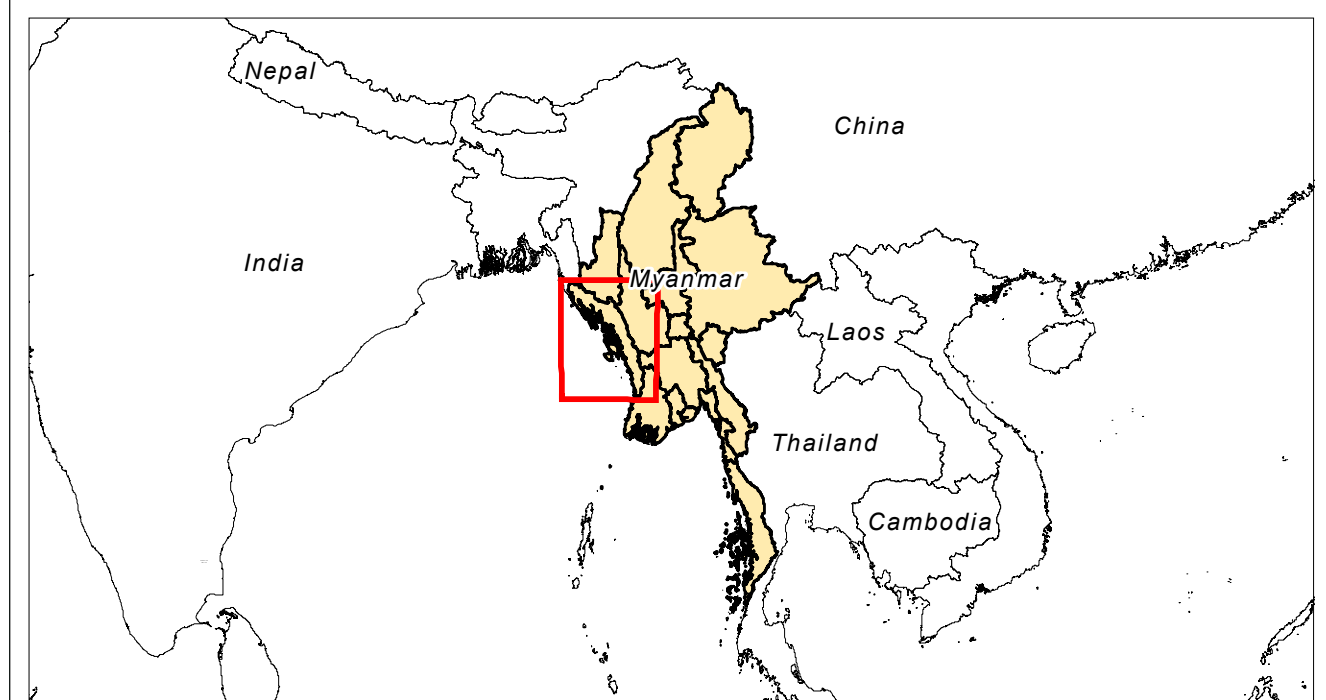
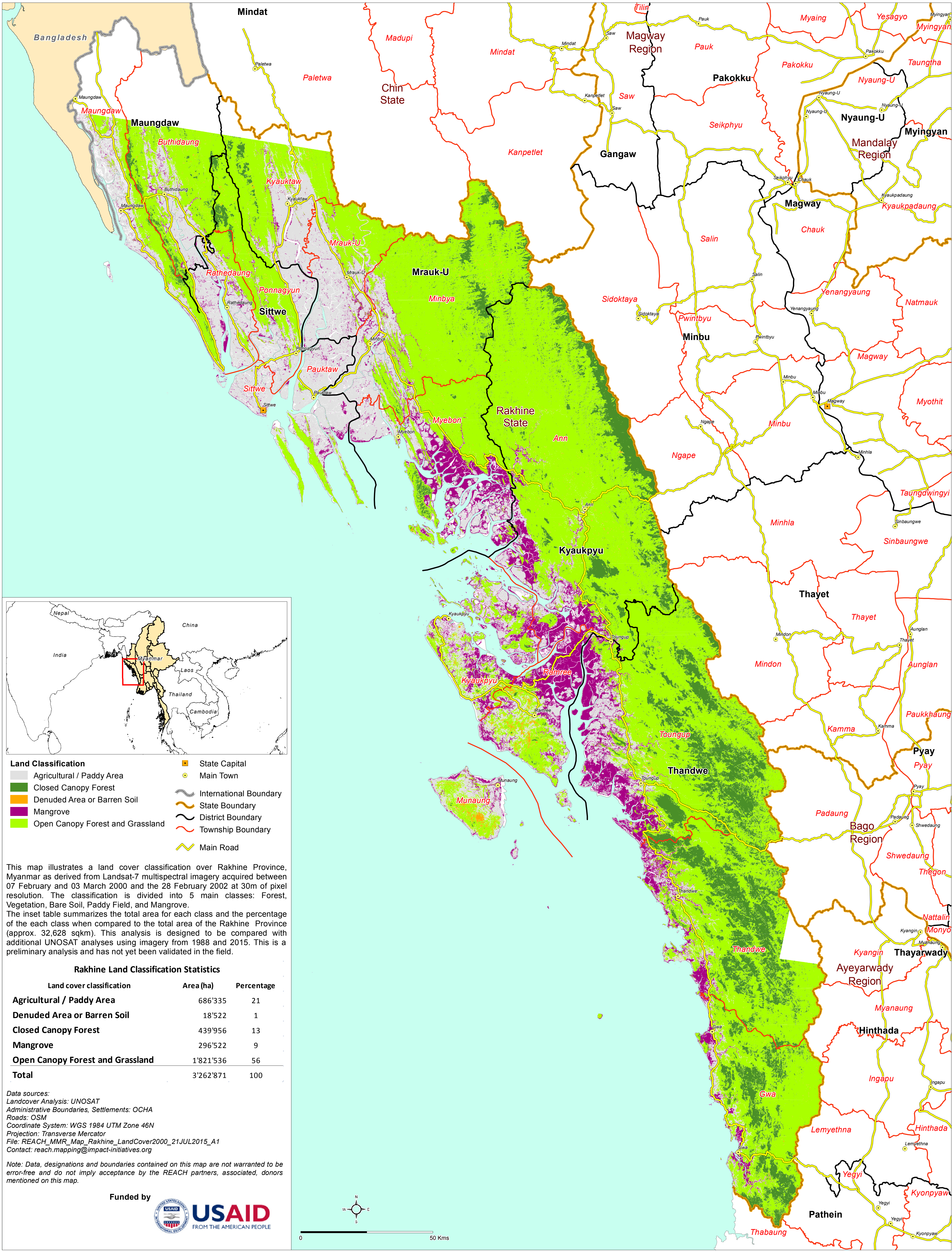




Rakhine State, Myanmar - Land Cover Analysis, 2000

For Humanitarian Purposes Only
Production date : 21st July 2015



- Land Classification**
- Agricultural / Paddy Area
 - Closed Canopy Forest
 - Denuded Area or Barren Soil
 - Mangrove
 - Open Canopy Forest and Grassland
 - State Capital
 - Main Town
 - International Boundary
 - State Boundary
 - District Boundary
 - Township Boundary
 - Main Road

This map illustrates a land covering classification over Rakhine Province, Myanmar as derived from Landsat-7 multispectral imagery acquired between 07 February and 03 March 2000 and the 28 February 2002 at 30m of pixel resolution. The classification is divided into 5 main classes: Forest, Vegetation, Bare Soil, Paddy Field, and Mangrove. The inset table summarizes the total area for each class and the percentage of the each class when compared to the total area of the Rakhine Province (approx. 32,628 sqkm). This analysis is designed to be compared with additional UNOSAT analyses using imagery from 1988 and 2015. This is a preliminary analysis and has not yet been validated in the field.

Rakhine Land Classification Statistics

Land cover classification	Area (ha)	Percentage
Agricultural / Paddy Area	686'335	21
Denuded Area or Barren Soil	18'522	1
Closed Canopy Forest	439'956	13
Mangrove	296'522	9
Open Canopy Forest and Grassland	1'821'536	56
Total	3'262'871	100

Data sources:
 Landcover Analysis: UNOSAT
 Administrative Boundaries, Settlements: OCHA
 Roads: OSM
 Coordinate System: WGS 1984 UTM Zone 46N
 Projection: Transverse Mercator
 File: REACH_MMR_Map_Rakhine_LandCover2000_21JUL2015_A1
 Contact: reach.mapping@impact-initiatives.org

Note: Data, designations and boundaries contained on this map are not warranted to be error-free and do not imply acceptance by the REACH partners, associated, donors mentioned on this map.

