



Khanke Formal Camp Profile

Duhok Governorate, Iraq

Iraq Internal Displacement Crisis

18 November 2014

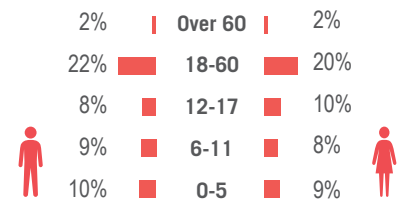
Summary

Khanke IDP camp was established in August 2014 as a formal camp for internally displaced persons (IDPs) who had settled in the area. The main area of origin of the resident IDPs is Sinjar, Ninewa Governorate.

Primary data was collected through household surveys from 13 - 18/11/2014. Additional information from camp managers, marked (*), is correct as of 18/11/2014.

Demographics

51% male / 49% female
nr. children age 0-17: 10,195



Reported Priority Needs

Priority needs reported by the camp population were : †

- 1 Food 90%
- 2 Water 78%
- 3 Sanitation 71%

† % of respondents who chose this need from a choice of five as one of their top three priority needs.

Sectoral Overview

		Target**	Achieved	
Education	% of children aged 6-11 enrolled in primary school	100%	3%	●
	% of children aged 12-17 enrolled in secondary school	100%	0%	●
Food	% of households received Family Food Parcel or equivalent in the past month	100%	38%	●
NFIs	% of households accessed NFI assistance since the onset of the crisis	100%	96%	●
Health*	Health services are available on-site or within walking distance	Yes	No	●
CCCM	Average open area per household	min. 30m ²	84.9m ²	●
Protection	% of IDPs registered on an individual basis	100%	100%	●
Shelter*	% of households accessed shelter assistance since the onset of the crisis	100%	93%	●
	Average covered area per person	min. 3.5m ²	3.9m ²	●
	Average number of individuals per tent	max.5	5.9	●
Water & Sanitation*	Litres of water available per person per day	min. 20L	Unknown	●
	# of persons per latrine	max. 20	32.5	●
	# of persons per shower (latrines and showers in Khanke camp are not gender specific)	max. 20	39.9	●

**Targets are based on minimum standards agreed with the CCCM Cluster, Iraq. ● Target reached , ● Target more than 50% reached, ● Target less than 50% or not at all reached.

Camp Overview

Camp management:* DMC / UNHCR

Camp population:* 18,426 Individuals

Accommodation:* 3120 Tents

Planned capacity:* 3120 Tents

Camp area: 0.679 km²

Implementing Agencies

EDUCATION: UNICEF / DoE

FOOD: BCF / WFP

HEALTH: AMMAR / DoH / WHO

NFI: UNHCR / KURDS

PROTECTION: UNHCR / Harikar

SHELTER: UNHCR / KURDS

WASH: UNICEF / FRC

CCCM Mechanisms

☒ Camp community leadership in place including IDP representative(s) *

☒ Other camp committees in place *

Location Map



Key Developments

96% of assessed households had received NFI assistance since the onset of the crisis, including clothing (received by 63%), footwear (26%) and hygiene kits (14%).

43% of assessed households had received a food package in the past month composed of less than a standard Family Food Parcel (staple carbohydrates, pulses, oil, sugar and salt).

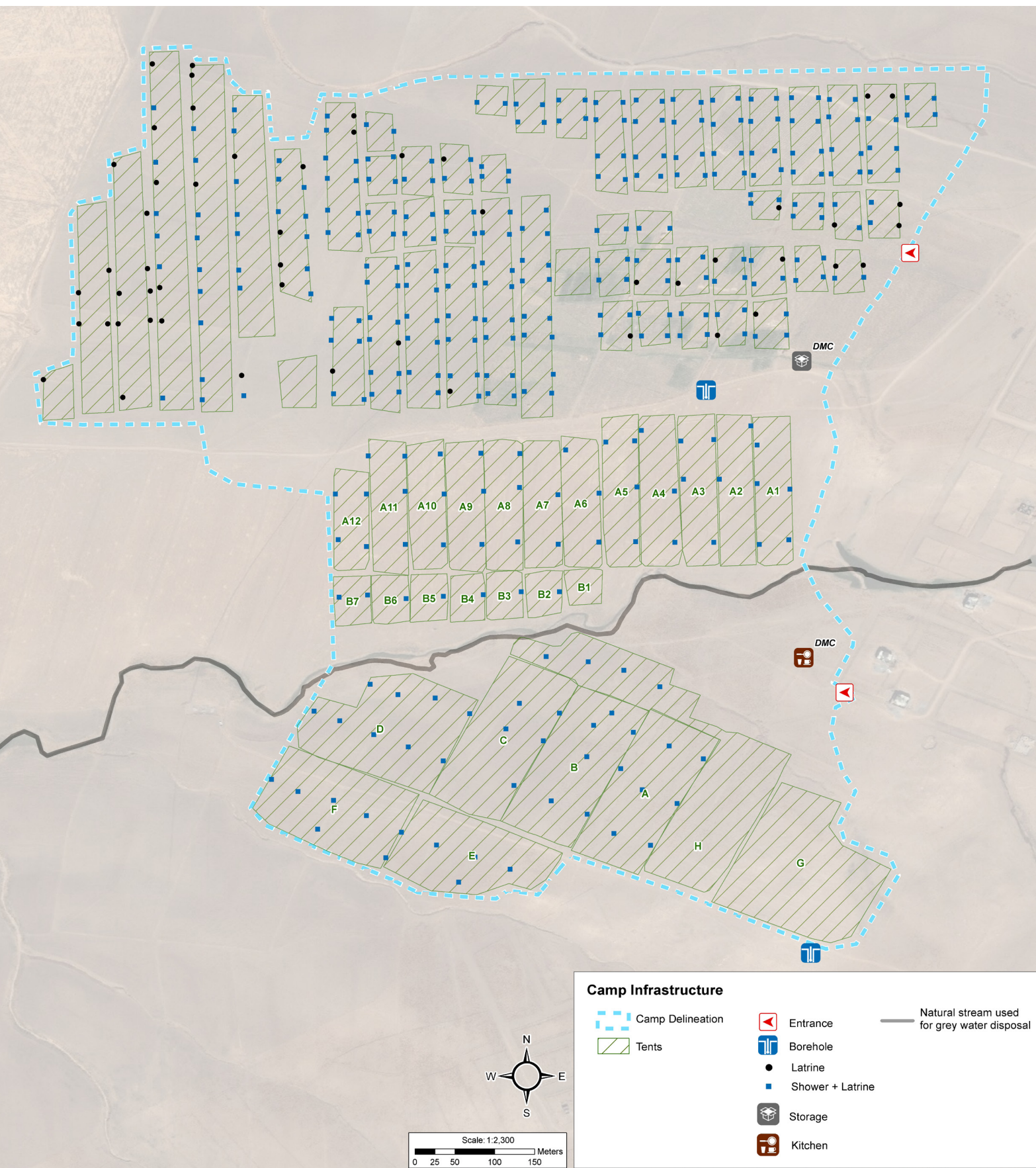
35 households (10% of all respondents) reported concerns / problems with their accommodation. 28 reported a lack of heating, 25 said they had unhygienic washing facilities, damp was reported by 23 and 22 said there was a lack of running water.

96% said there was not a safe space for children. 17% of households included a pregnant or lactating woman.

13% of households had a member who was missing their citizenship certificate and 9% had a member missing an ID card.

Khanke Formal Camp Map

Lat: 36° 46' 46.403" N Long: 42° 46' 25.41" E



For more information on this profile please contact:
CCCM Cluster: iraqimo@cccmcluster.org
REACH Initiative, Joseph Slowey: iraq@reach-initiative.org

REACH An initiative of
IMPACT Initiatives
ACTED and UNOSAT