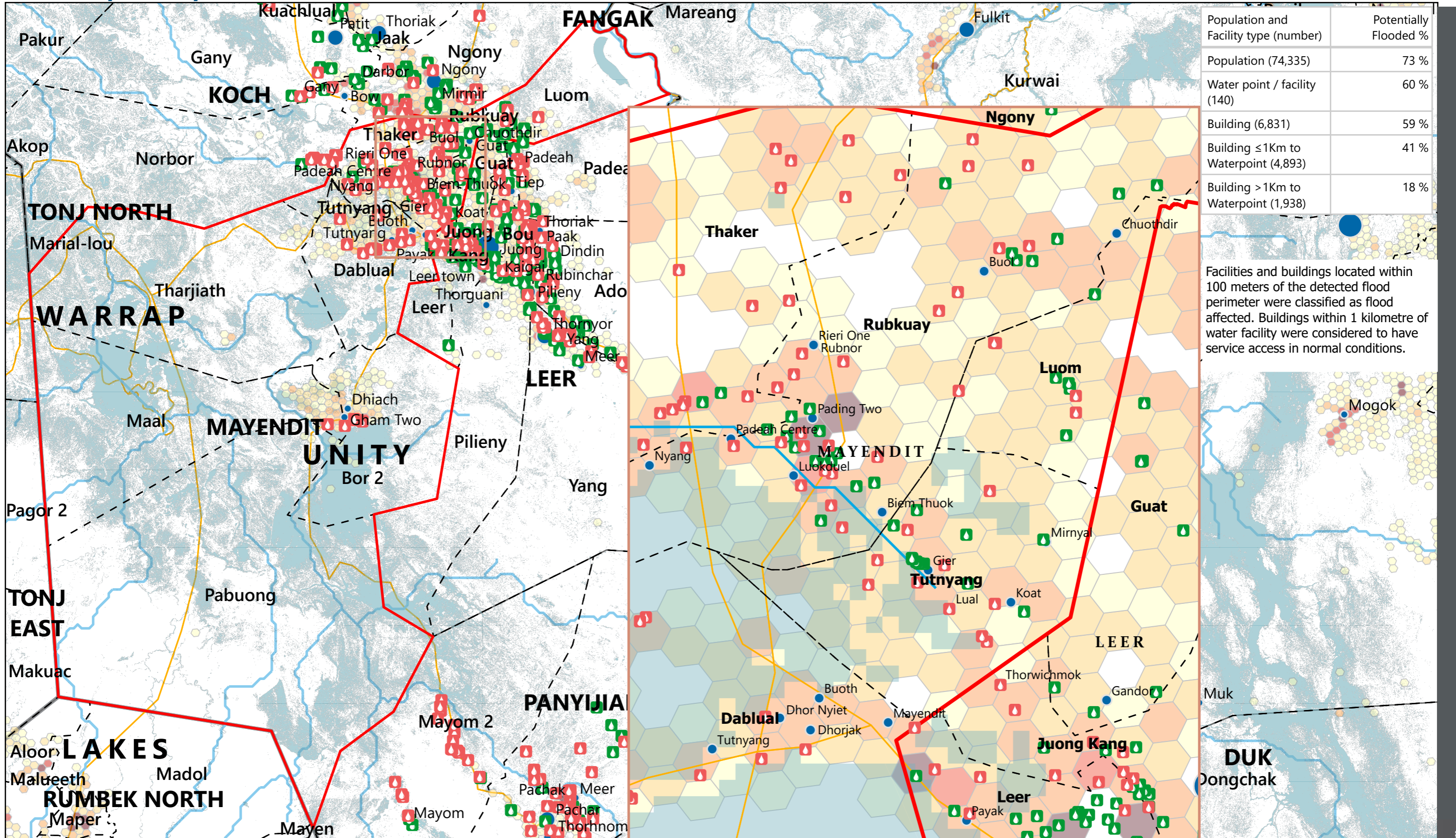


SOUTH SUDAN - Mayendit County

Flood Impact Map: Water Facilities (October 2025)

For Humanitarian Purposes Only
Production Date: 22 October 2025



Population and Facility type (number)	Potentially Flooded %
Population (74,335)	73 %
Water point / facility (140)	60 %
Building (6,831)	59 %
Building ≤1Km to Waterpoint (4,893)	41 %
Building >1Km to Waterpoint (1,938)	18 %

Facilities and buildings located within 100 meters of the detected flood perimeter were classified as flood affected. Buildings within 1 kilometre of water facility were considered to have service access in normal conditions.



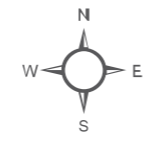
Population (Kontur, 2023)

1 - 100
101 - 250
251 - 500
501 - 750
> 750

- Satellite-detected flood extent (FEWSNET, as of 30th September 2025)
- Unaffected Waterpoint
- Potentially Affected Waterpoint

- Settlements (Population)
- < 5,000
 - 5,001 - 10,000
 - > 10,000

- Roads
- River
- Payam
- Focus County
- County
- State



Data sources: Source: REACH, OCHA, UNMISS, IOM, DTM, UNOSAT, FEWSNET, WHO, IOM, DTM, Global Google-Microsoft Open Buildings Dataset (2023)
Coordinate System: Name: GCS WGS 1984
File: REACH_SSD_Map_Unity_Mayendit_Flood_Impact_Water_22_Oct_2025
Contact: reach.mapping@impact-initiatives.org

Note: Data, designations and boundaries contained on this map are not warranted to be error-free and do not imply acceptance by REACH partners, associates or donors mentioned on this map.

