

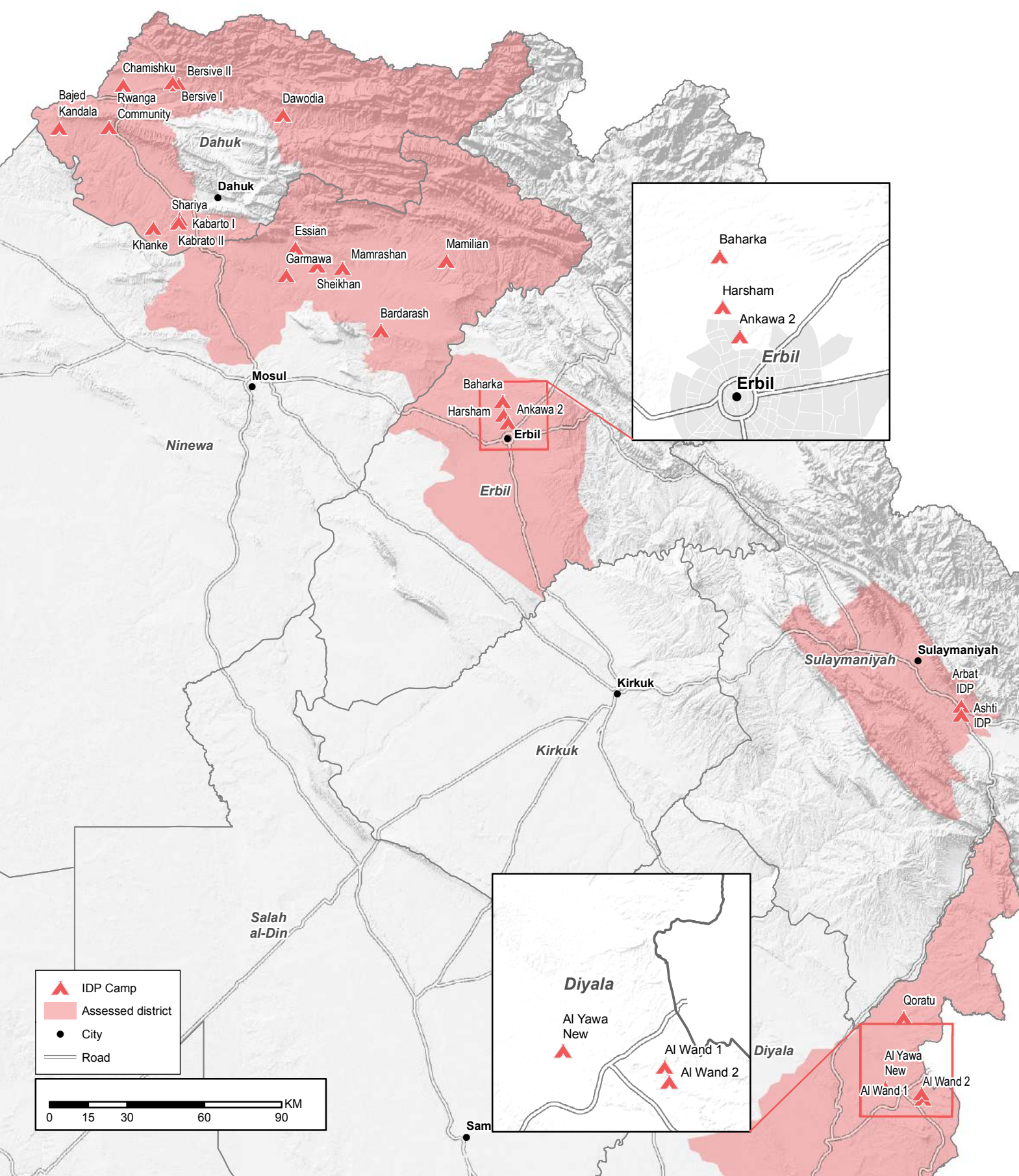


IDP Camp Road Typology

Map Catalogue

Iraq
December 2015 - January 2016

Available Camp Road Typology Maps



Methodology and Background

Being heavily used by trucks delivering water and other goods, the network of roads leading to and within camps is vital to the delivery of services. With the winter period delivering wet and cold conditions, road conditions can rapidly deteriorate, especially when constructed from compacted mud. Flooding due to poor run-off and over-absorbent mud road surfaces can produce long periods of flooding and produce long-term damage to the roads, as well as hinder access to camps.

In order to better understand the REACH Initiative collected road types during December 2015 and January 2016 to better understand the type of roads within camps across the Kurdistan Region of Iraq (KRI) and neighbouring governorates. These maps are presented here in a single collection. Links to individual maps can be selected from the map on the previous page or from the Contents table below. Accompanying infrastructure maps are also available here.

Contents

Dahuk	Bersive I	...1	Kabarto 1	...6
	Bersive II	...2	Kabarto 2	...7
	Bajid Kandala	...3	Khanke	...8
	Chamisku	...4	Rwanga Community	...9
	Dawodia	...5	Shariya	...10
Diyala	Alwand 1	...11		
	Alwand 2	...12		
	Alyawa New	...13		
	Qoratu	...14		
Erbil	Ankawa 2	...15		
	Baharka	...16		
	Harshm	...17		
Ninewa	Bardarash	...18	Mamarash	...21
	Essian	...19	Mamilian	...22
	Garmawa	...20	Sheikhan	...23
Sulaymaniyah	Arbat IDP	...24		
	Ashti	...25		

About REACH Initiative

REACH facilitates the development of information tools and products that enhance the capacity of aid actors to make evidence-based decisions in emergency, recovery and development contexts. All REACH activities are conducted through inter-agency aid coordination mechanisms. For more information, you can write to our in-country office: iraq@reach-initiative.org. You can view all our reports, maps and factsheets on our resource centre: reachresourcecentre.info, visit our website at reach-initiative.org, and follow us [@REACH_info](https://twitter.com/REACH_info).



Road Type

Camp Infrastructure



Road Type

- Black Top Road
- Gravel Road

Camp Infrastructure

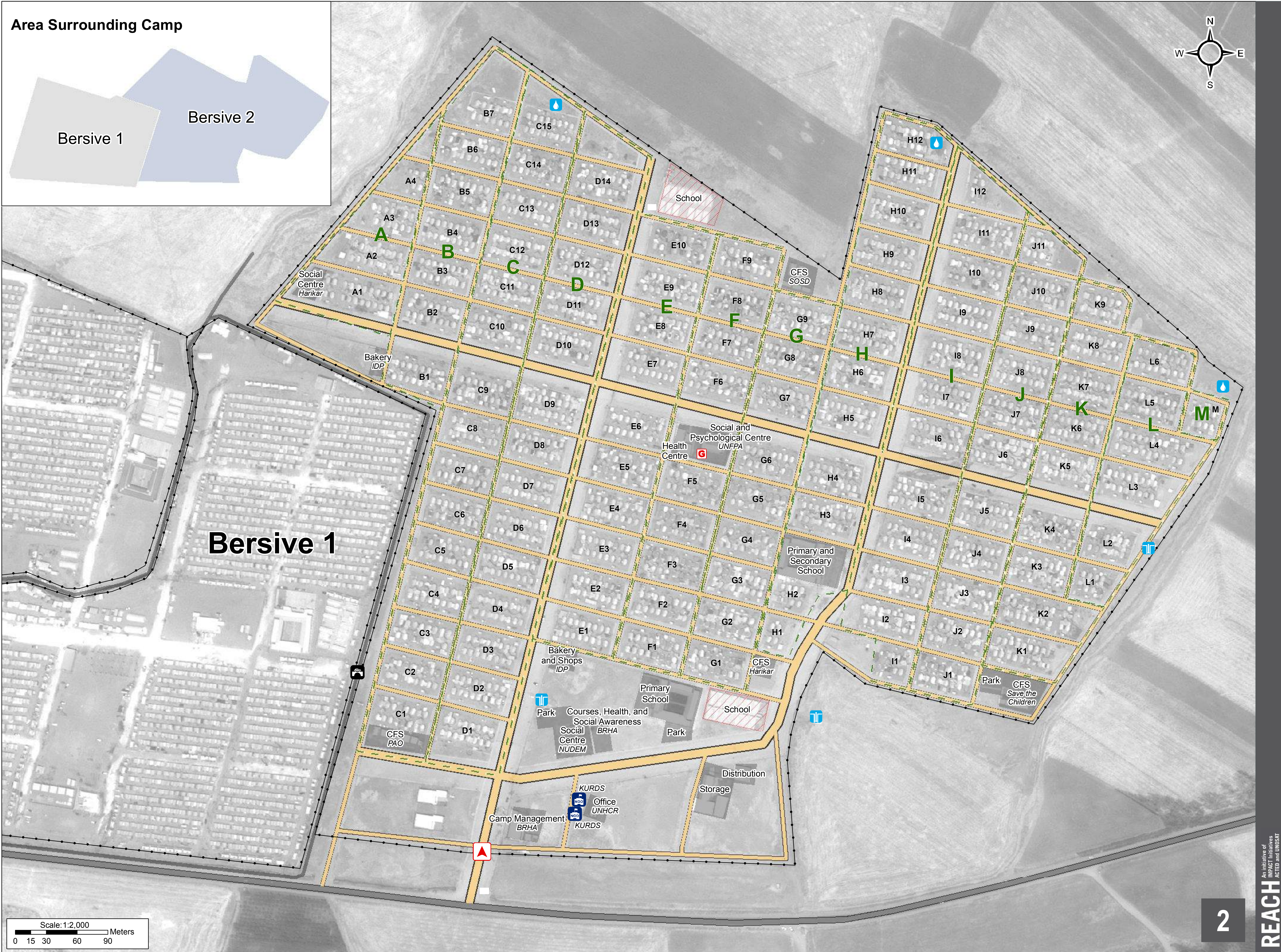
- Fence
- Sector (A - M)
- Office / Facility
- Under Construction
- Entrance
- NGO Office
- Borehole (3)
- Water Tank (3)
- Bridge
- Generator
- Rainwater Channel

GPS Coordinates of Camp Location:
Longitude: 42° 51' 51.759" E
(42.864378)
Latitude: 37° 10' 57.645" N
(37.182679)

Thematic Data: 17/01/2016 - REACH
Administrative boundaries: GADM
Background imagery: 21/07/2015
Projection: WGS 1984 UTM Zone 38N

Contact : iraq@reach-initiative.org
File:IRQ_Map_IDP_BersiveII_Road_21Jan2016

Note: Data, designations and boundaries contained on this map are not warranted to be error-free and do not imply acceptance by the REACH partners, associates or donors mentioned on this map.



Road Type

- Black Top Road
- Gravel Road

Camp Infrastructure

- Camp Delineation
- Quarter
- Block
- Office / Facility
- Entrance
- Health
- Office
- Borehole (4)
- Water Tank (5)
- Bakery
- Generator
- Storage
- Fuel Tank
- Grey Water

GPS Coordinates of Camp Location:
Longitude: 42° 26' 48.293" E (42.446748)
Latitude: 37° 3' 19.336" N (37.055371)

Thematic Data: 10/09/2015 - REACH
Administrative boundaries: GADM
Background imagery: 14/11/2014
Projection: WGS 1984 UTM Zone 38N

Contact : iraq@reach-initiative.org
File:IRQ_Map_IDP_BajedKandala_Road_10Jan2016

Note: Data, designations and boundaries contained on this map are not warranted to be error-free and do not imply acceptance by the REACH partners, associates or donors mentioned on this map.





Road Type

- Muddy Road
- Gravel Road

Camp Infrastructure

- Fence
- Office / Facility

- Entrance
- Camp Management
- Office
- Distribution
- Borehole (6)
- Water Tank (12)
- Storage
- Bakery
- Generator
- Grey Water

GPS Coordinates of Camp Location:
Longitude: 42° 40' 1.47" E
(42.667075)
Latitude: 37° 10' 38.84" N
(37.177456)

Data sources:
Camp Infrastructure: 20 January 2016, REACH Initiative
Satellite Imagery: 05/08/2015
Coordinate System: WGS 1984 UTM Zone 38N
Projection: Transverse Mercator
File: IRQ_MAP_IDP_Chamisku_Overview_20Jan2016
Contact: iraq@reach-initiative.org

Note: Data, designations and boundaries contained on this map are not warranted to error-free and do not imply acceptance by the REACH partners, associated, donors mentioned on this map.

Road Type

- Black Top Road
- Muddy Road

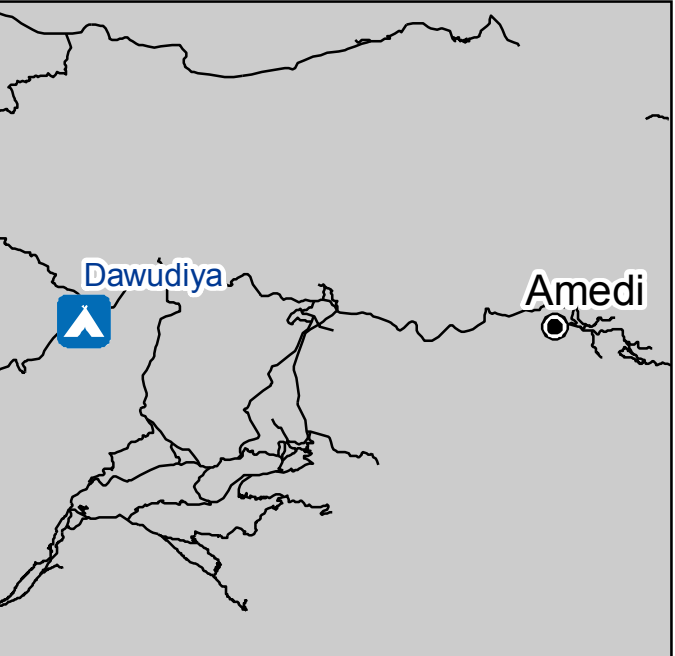
Camp Infrastructure

- Fence
- Sector
- Office / Facility
- Entrance
- Office
- Community Centre
- Borehole (3)
- Bakery

GPS Coordinates of Camp Location:
Longitude: 43° 13' 34.695" E (43.226304)
Latitude: 37° 5' 38.324" N (37.093979)

Thematic Data: 18/01/2016 - REACH
Administrative boundaries: GADM
Background imagery: 03/08/2015

Projection: WGS 1984 UTM Zone 38N
Contact : iraq@reach-initiative.org
File:
IRQ_Map_IDP_Dawudiya_Road_20Jan2016
Note: Data, designations and boundaries contained on this map are not warranted to be error-free and do not imply acceptance by the REACH partners, associates or donors mentioned on this map.



IRAQ - Duhok Governorate - Kabarto 1

Road Type - December 2015

Road Type

- Gravel Road

Camp Infrastructure

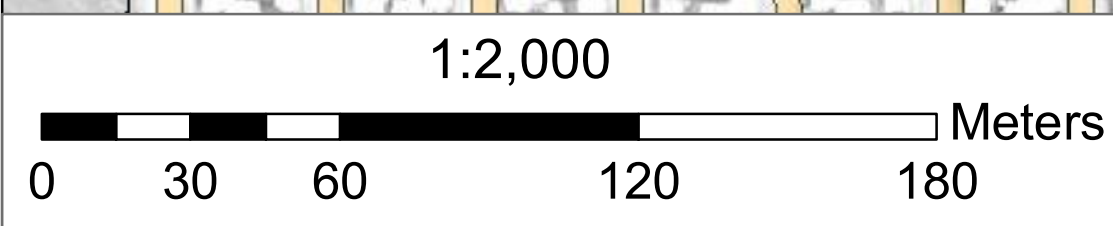
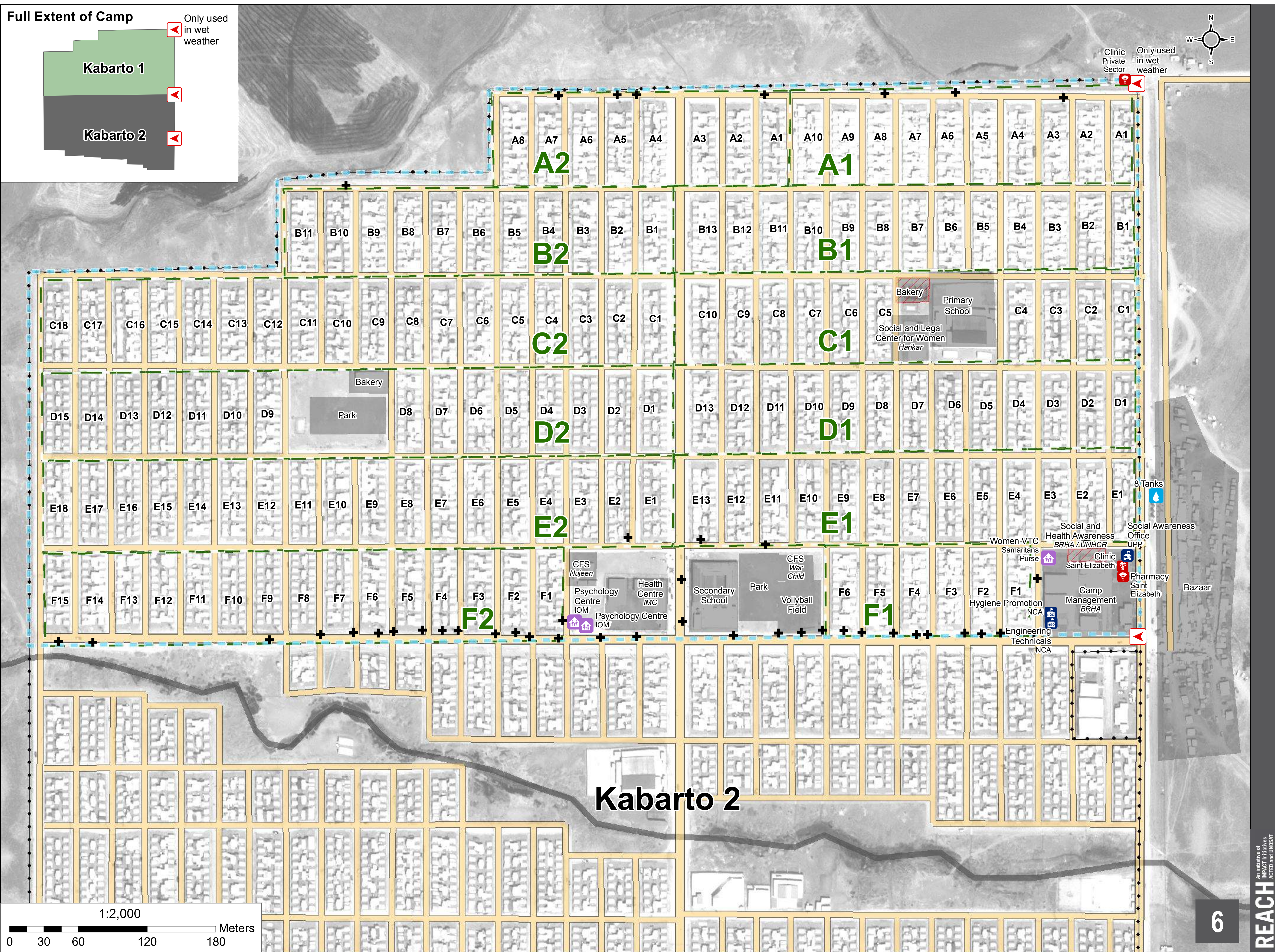
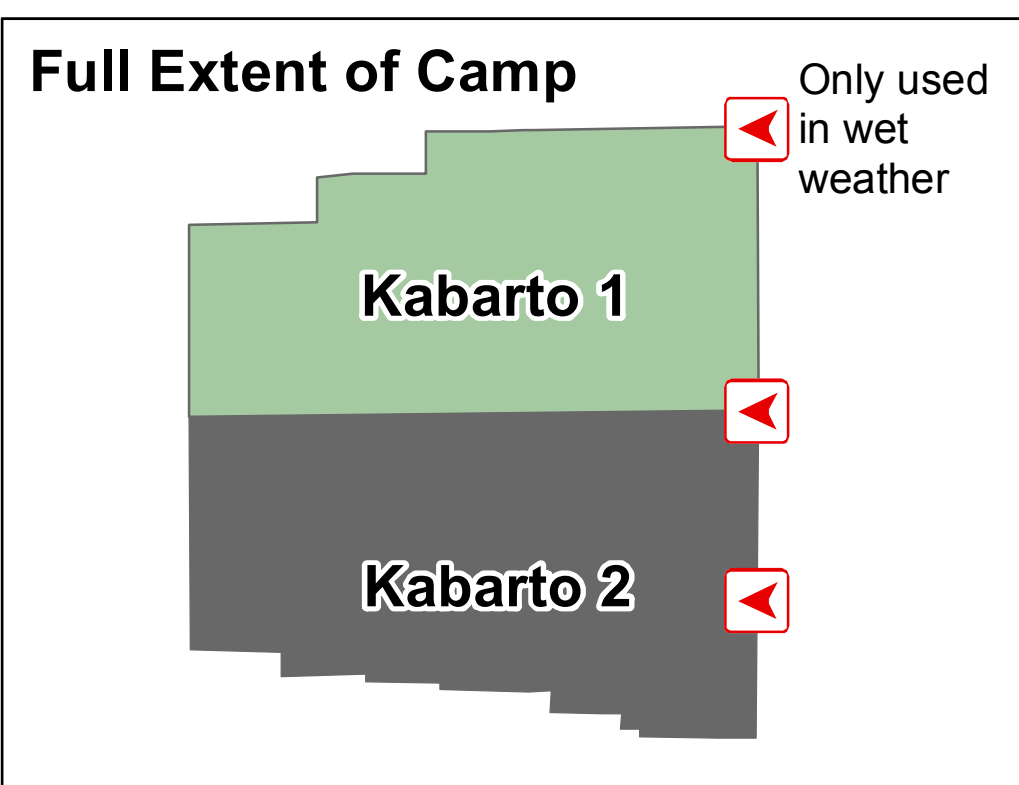
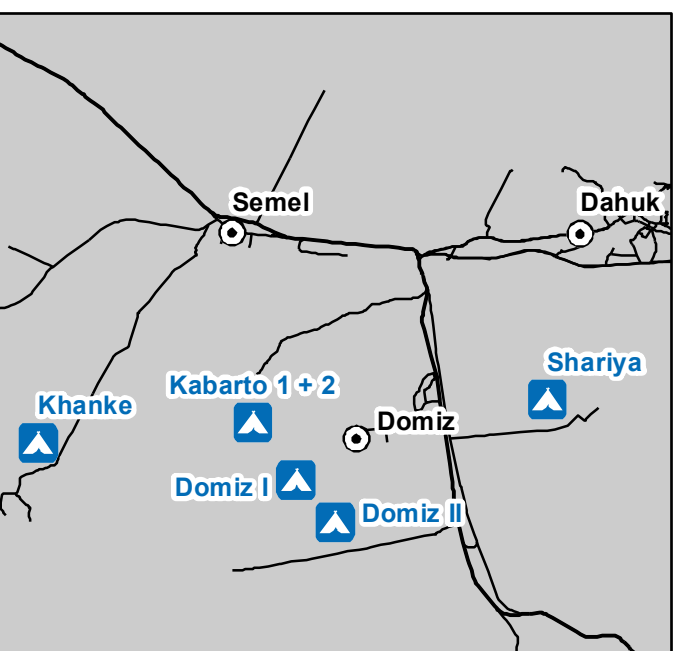
- Camp Delineation
- Fence
- Sector (A1 - F2)
- Office / Facility
- Under Construction
- Entrance
- Health
- Office
- Community Centre
- Water Tank (8)
- Electrical Pole (45)
- Grey Water

**GPS Coordinates
of Camp Location:**
Longitude: 42° 51' 29.428" E
(42.858174)
Latitude: 36° 47' 34.892" N
(36.793026)

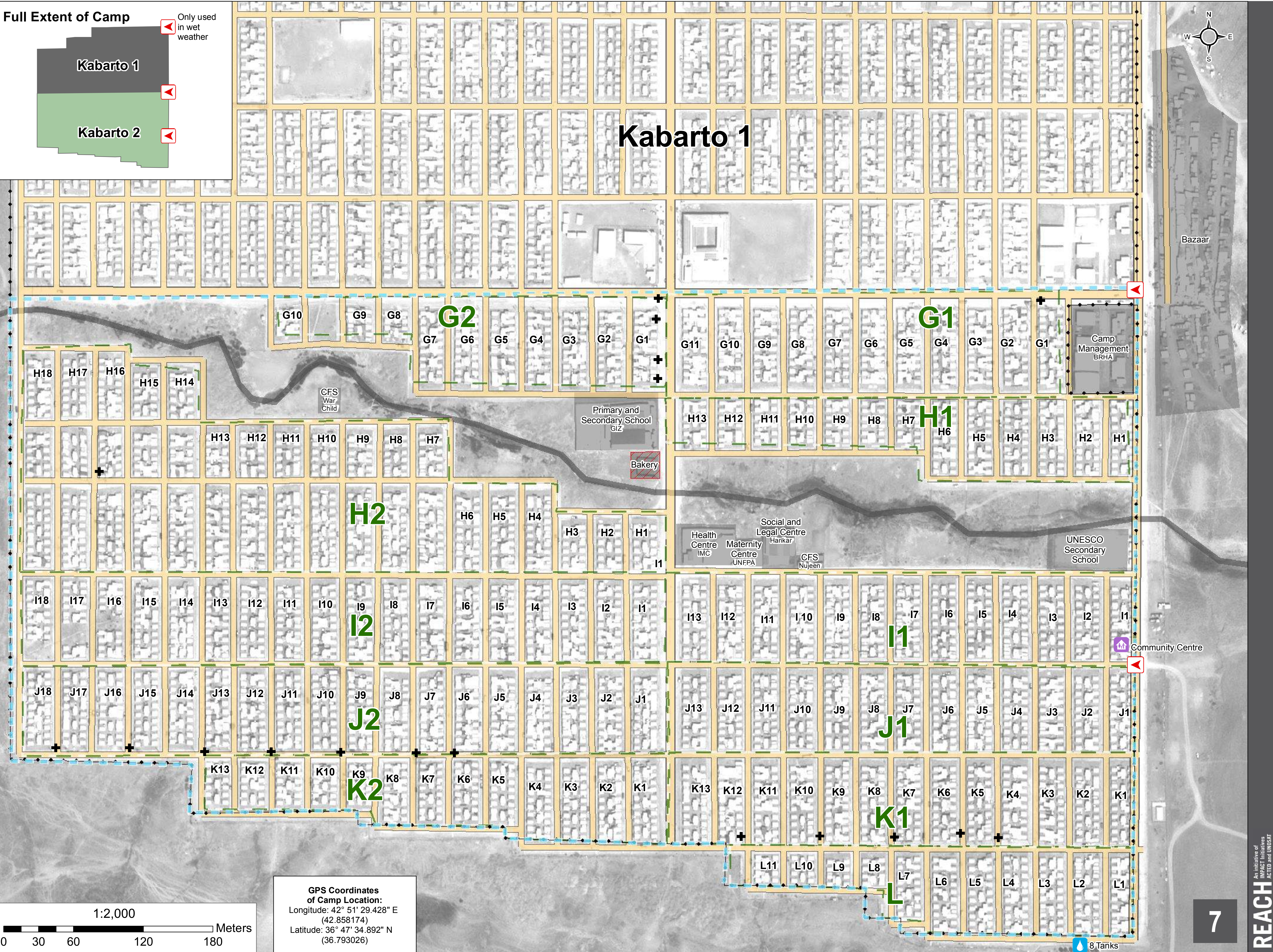
Thematic Data: 9 December 2015 - REACH
Administrative boundaries: GADM
Background imagery: 06/06/2015
Projection: WGS 1984 UTM Zone 38N

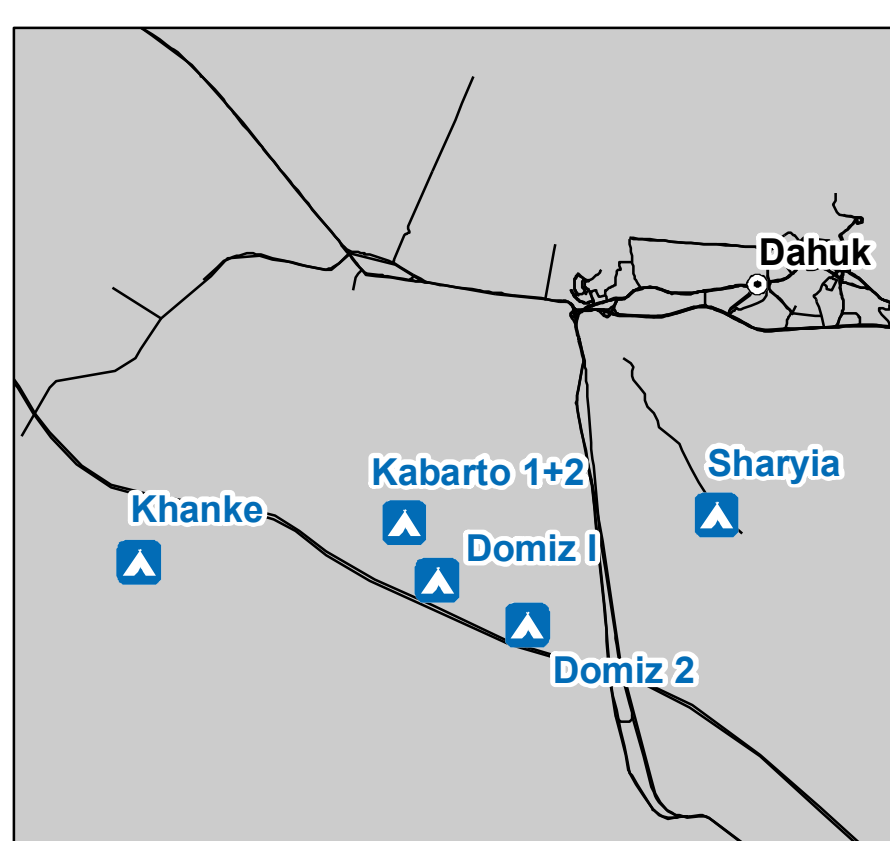
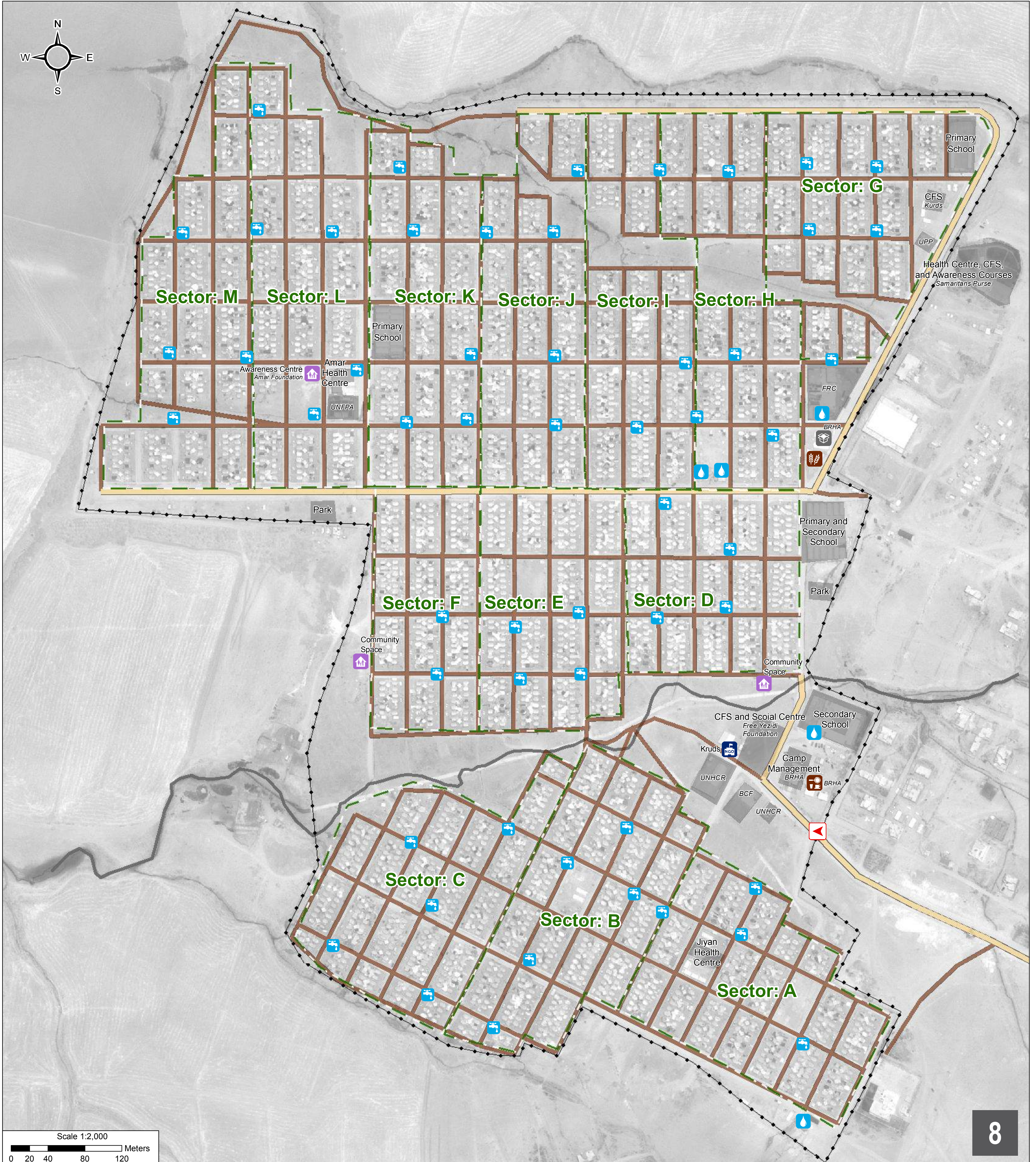
Contact : iraq@reach-initiative.org
IRQ_Map_IDP_Kabarto1_Road
_7Jan2016.mxd

Note: Data, designations and boundaries
contained on this map are not warranted to be
error-free and do not imply acceptance by the
REACH partners, associates or donors
mentioned on this map.



- Road Type**
- Gravel Road
- Camp Infrastructure**
- Camp Delineation
 - Fence
 - Sector (G1 - L)
 - Office / Facility
 - Under Construction
 - Entrance
 - Community Centre
 - Water Tank (8)
 - Electrical Pole (17)
 - Grey Water





Road Type

- Gravel Road
- Muddy Road

Camp Infrastructure

- Fence
- Sector (A - M)
- Office / Facility

- Entrance
- Office
- Community Centre
- Tapstand (55)
- Water Tank (5)
- Kitchen
- Bakery
- Storage
- Natural stream used for grey water disposal

Data sources:

Camp data - REACH assessment - 15/12/2015

Imagery: 04/07/2015

Coordinate System: WGS 1984 UTM Zone 38N
File: IRQ_Map_IDP_Khanke_Road_12Jan2016
Contact: reach.mapping@impact-initiatives.org

Note: Data, designations and boundaries contained on this map are not warranted to error-free and do not imply acceptance by the REACH partners, associated, donors mentioned on this map.

GPS Coordinates of Camp Location:
Longitude: 42° 46' 25.41" E (42.773725)
Latitude: 36° 46' 46.403" N (36.779556)



Road Type

Gravel Road

Camp Infrastructure

Fence

Sector

Office / Facility

Entrance

Community Centre

Water Tank

GPS Coordinates
of Camp Location:
Longitude: 42° 36' 59.561" E
(42.61654)
Latitude: 37° 3' 20.994" N
(37.05583)

Thematic Data: 22/12/2015 - REACH
Administrative boundaries: GADM
Background imagery: 24/09/2015

Projection: WGS 1984 UTM Zone 38N

Contact : iraq@reach-initiative.org
File: IRQ_Map_IDP_Rwanga_Road_21Jan2016

Note: Data, designations and boundaries contained on this map are not warranted to error-free and do not imply acceptance by the REACH partners, associated, donors mentioned on this map.



10



Road Type

- Black Top Road
- Gravel Road

Camp Infrastructure

- Fence
- Block (A1 - E8)
- Office / Facility

- Camp Entrance
- Sector Gate
- Health Clinic
- NGO Office
- Child Friendly Space
- Empty Tent
- Generator
- Latrine (167)
- Latrine for Disabled People (19)
- Shower (140)
- Laundry (17)
- Scullery (39)
- Water Point (36)
- Lamp (101)
- Grey Water Disposal (2)
- Bakery
- Road

Thematic Data: 14/12/2015 - REACH
Administrative boundaries: GADM
Background imagery: 06/06/2015 DigitalGlobe
Projection: WGS 1984 UTM Zone 38N
Contact : iraq@reach-initiative.org
File: IRQ_IDP_Shariya_Road_10Jan2016

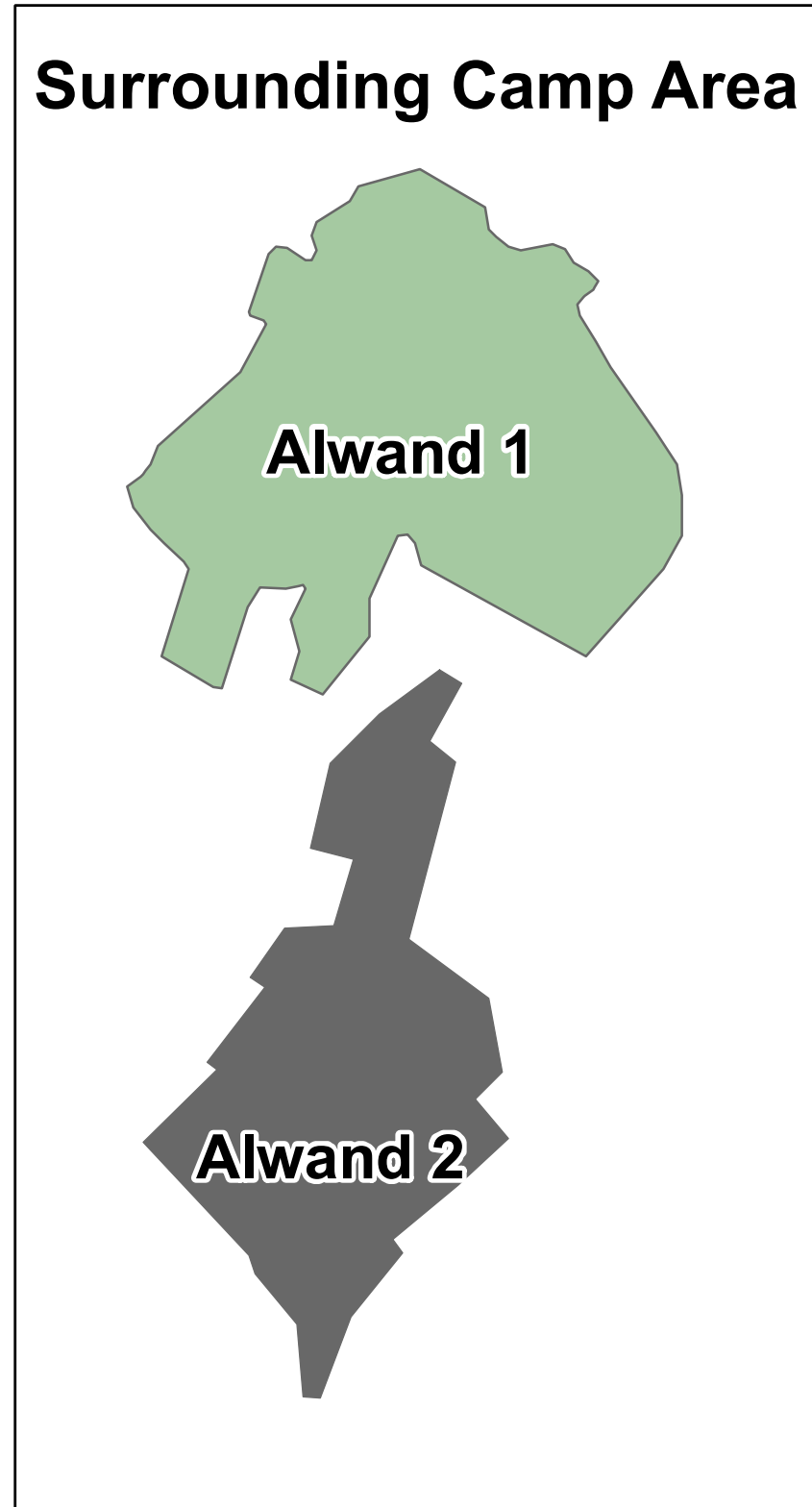
Note: Data, designations and boundaries contained on this map are not warranted to error-free and do not imply acceptance by the REACH partners, associated, donors mentioned on this map.

Road Type

- Gravel Road

Camp Infrastructure

- Fence
- Block (1 - 20)
- Unoccupied Area
- Under Construction
- Office/ Facility
- Entrance
- Camp Management
- Latrine (6)
- Water Tank (7)
- Generator
- Electrical Pole



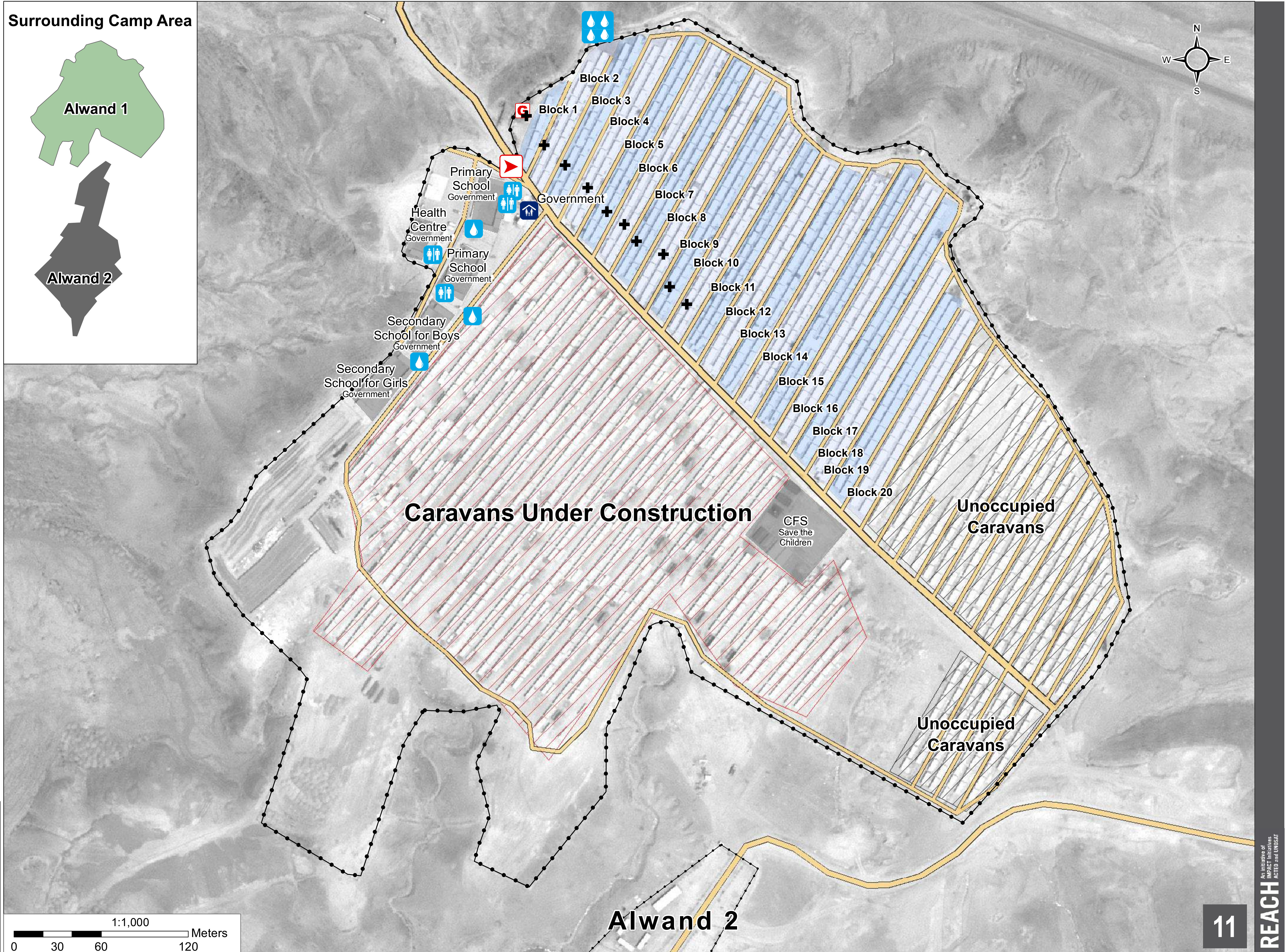
GPS Coordinates of Camp Location
Longitude :45° 27' 8.526" E
(45.452368)
Latitude: 34° 19' 36.247" N
(34.326735)

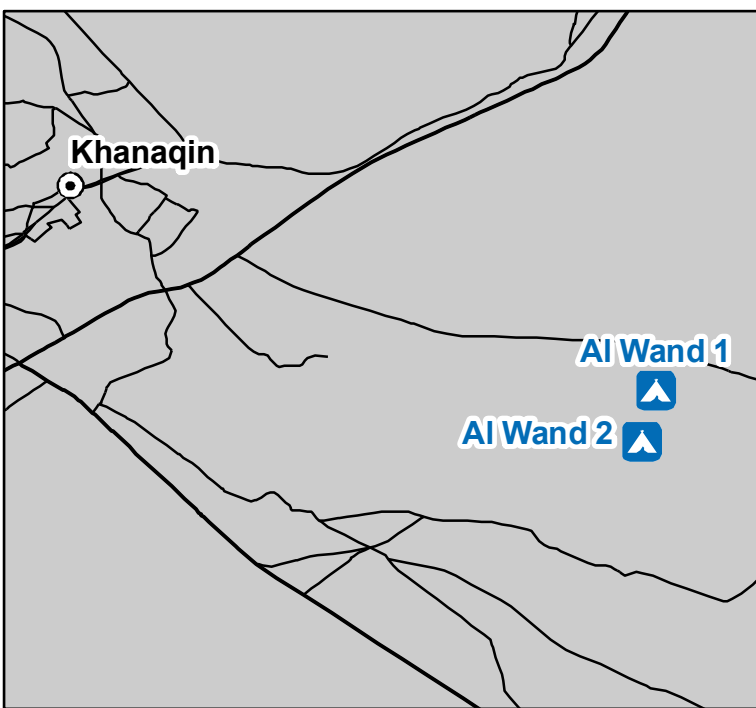
Thematic Data: 27 December 2015 - REACH
Administrative boundaries: GADM
Background imagery: 18/07/2015

Projection: WGS 1984 UTM Zone 38N

Contact : iraq@reach-initiative.org
File:
IRQ_Map_IDP_AlwandCamp_Road
_10Jan2016

Note: Data, designations and boundaries contained on this map are not warranted to be error-free and do not imply acceptance by the REACH partners, associates or donors mentioned on this map.





Road Type

Gravel Road

Camp Infrastructure

Fence

Sector

Unoccupied Area

Office / Facility

Entrance



Health



Camp Management



Water Tank (2)



Generator

GPS Coordinates of Camp Location:
Longitude: 45° 27' 11.29" E
(45.45314)
Latitude: 34° 19' 26.35" N
(34.32399)

Thematic Data: 20/12/2015 - REACH
Administrative boundaries: GADM
Background imagery: 18/07/2015

Projection: WGS 1984 UTM Zone 38N

Contact : iraq@reach-initiative.org
File: IRQ_Map_IDP_Alwand2_Road_10Jan2016

Note: Data, designations and boundaries contained on this map are not warranted to error-free and do not imply acceptance by the REACH partners, associated, donors mentioned on this map.

Road Type

- Black Top Road
- Gravel Road

Camp Infrastructure

- Fence
- Tented Area
- Office / Facility
- Entrance
- Health
- Camp Management
- NGO Office
- Registration
- Education
- Community Centre
- Shower (Men) (1)
- Shower (Women) (1)
- Latrine+Shower (Men) (29)
- Latrine+Shower (Women) (28)
- Latrine (Communal) (20)
- Tapstand (27)
- Water Tank (2)
- Water Filter (2)
- Borehole (1)
- Boiler (25)
- Bakery
- Kitchen
- Generator

Thematic Data: 20/12/2015 - REACH
Administrative boundaries: GADM
Background imagery: 18/07/2015
Projection: WGS 1984 UTM Zone 38N
File: IRQ_Map_IDP_AIYawaNew_Road_10Jan2016
Contact : iraq@reach-initiative.org

Note: Data, designations and boundaries contained on this map are not warranted to be error-free and do not imply acceptance by the REACH partners, associates or donors mentioned on this map.



GPS Coordinates of Camp Location:
Longitude: 45° 19' 51.524" E (45.330848)
Latitude: 34° 20' 40.927" N (34.344702)

Scale: 1:2,000
0 25 50 100 150 Meters

Road Type

Black Top Road

Gravel Road

Camp Infrastructure

Fence

Sector

Office / Facility

Under Construction

Entrance

Office

Education

Mosque

Latrine (6)

Water Tank (16)

Tap Stand (19)

Borehole (2)

Generator

Storage

GPS Coordinates of Camp Location

Longitude :45° 23' 26.923" E
(45.390812)
Latitude: 34° 32' 39.908" N
(34.544419)

Thematic Data: 27 December 2015
Administrative boundaries: GADM
Background imagery: 18/07/2015

Projection: WGS 1984 UTM Zone 38N

Contact : iraq@reach-initiative.org
File:
IRQ_IDP_Qoratu_Road_10Jan2016

Note: Data, designations and boundaries contained on this map are not warranted to be error-free and do not imply acceptance by the REACH partners, associates or donors mentioned on this map.



Road Type

Gravel Road

Camp Infrastructure

Fence

Caravan Area

Office / Facility

Entrance

Health

Camp Management

Office

Generator

Latrine (Men) (1)

Latrine (Women) (1)

Borehole (2)

Water Tank (2)

GPS Coordinates

of Camp Location:

Longitude: 44° 0' 39.412" E

(44.01095)

Latitude: 36° 14' 4.035" N

(36.23445)

Thematic Data: 10/01/2016 - REACH

Administrative boundaries: GADM

Background imagery: 13/08/2015

Projection: WGS 1984 UTM Zone 38N

Contact : iraq@reach-initiative.org

File: IRQ_Map_IDP_ankawa2_Road

_20Jan2016

Note: Data, designations and boundaries contained on this map are not warranted to be error-free and do not imply acceptance by the REACH partners, associates or donors mentioned on this map.



Road Type

- Black Top Road
- Gravel Road

Camp Infrastructure

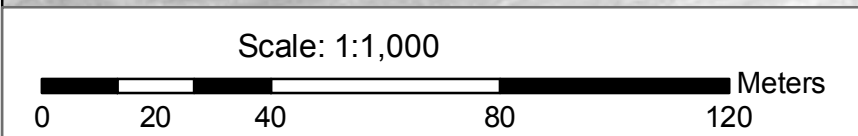
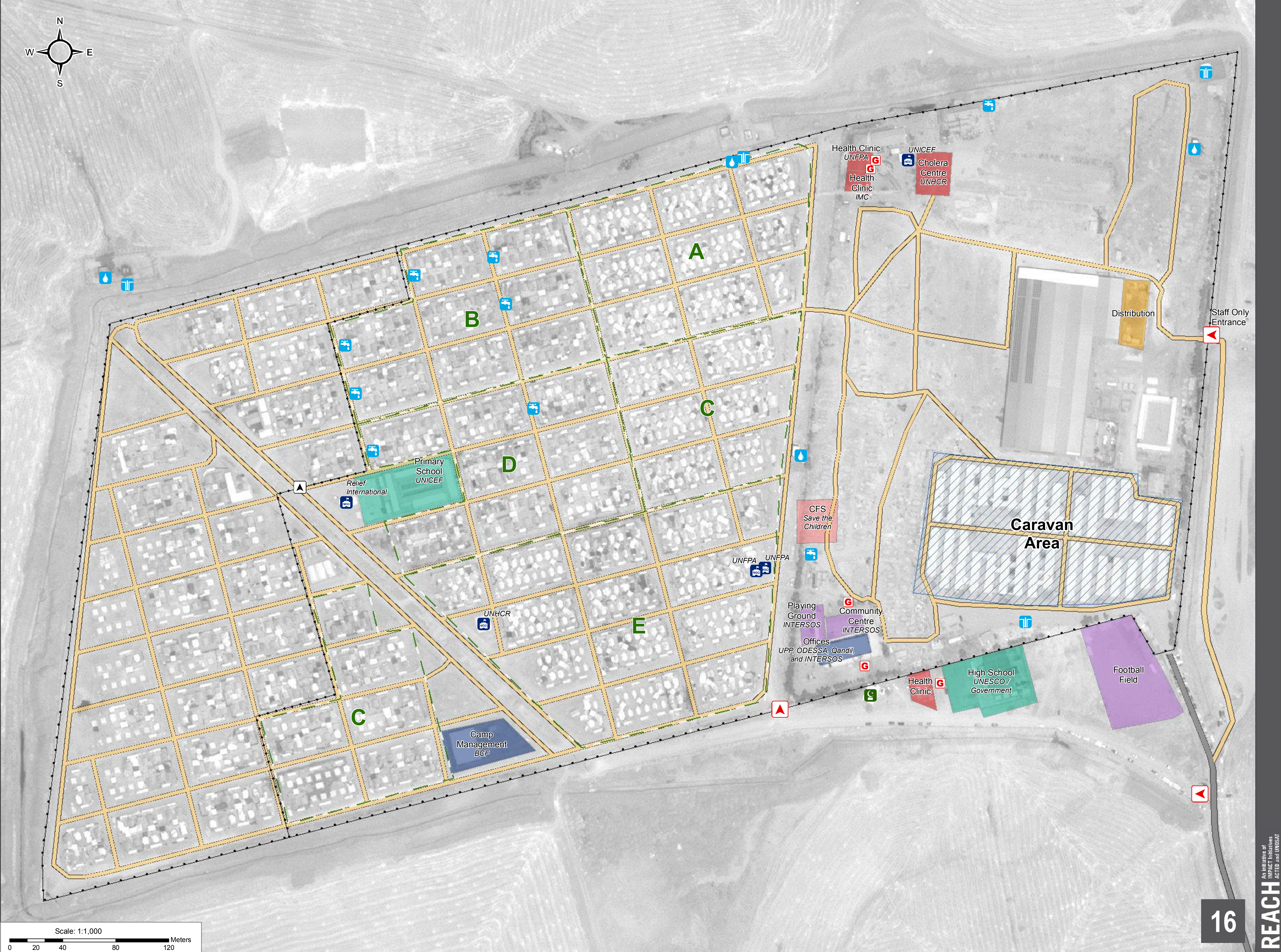
- Fence
- Sector (A - E)
- Caravan Area
- Office / Facility
- Entrance
- Office
- Water Tank (4)
- Tapstand (9)
- Borehole (4)
- Generator

GPS Coordinates of Camp Location:
Longitude: 43° 59' 39.655" E (43.99352)
Latitude: 36° 17' 40.022" N (36.29445)

Thematic Data: 11/01/2016 - REACH
Administrative boundaries: GADM
Background imagery: 13/08/2015
Projection: WGS 1984 UTM Zone 38N

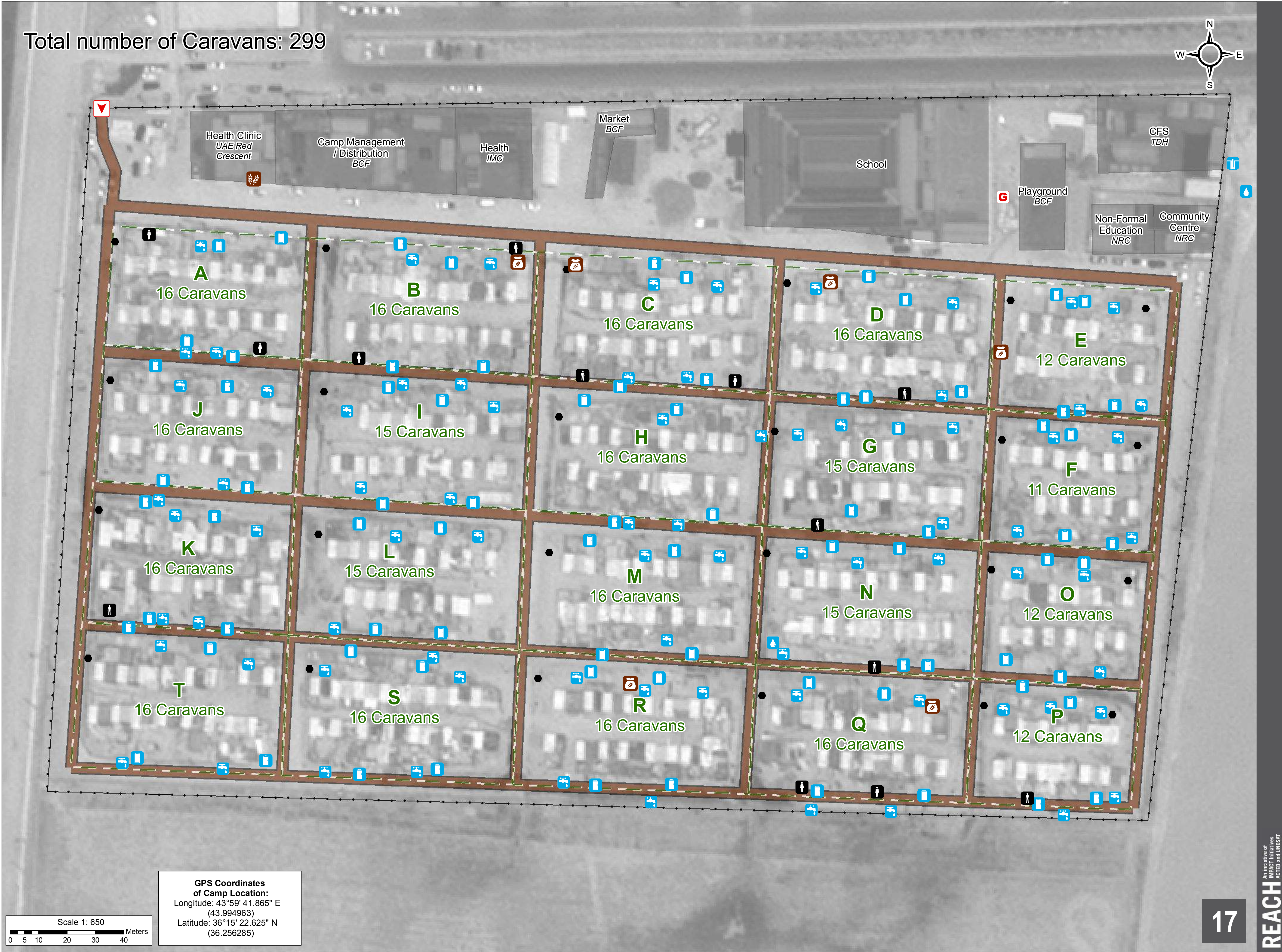
Contact : iraq@reach-initiative.org
File: IRQ_Map_IDP_Baharka_Road_20Jan2016

Note: Data, designations and boundaries contained on this map are not warranted to be error-free and do not imply acceptance by the REACH partners, associates or donors mentioned on this map.



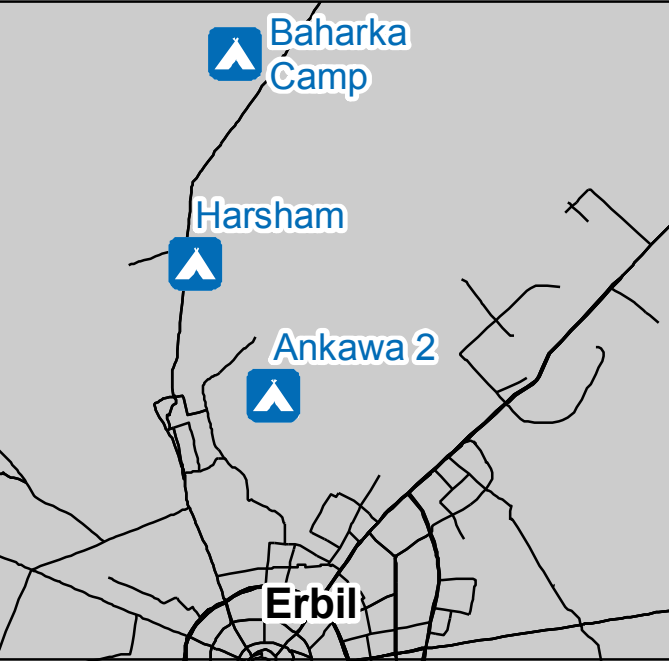
- Road Type**
- Muddy Road
- Camp Infrastructure**
- Fence
 - Sector
 - Office / Facility
 - Entrance
 - Latrine + Shower (80)
 - Disabled Latrine (13)
 - Tapstand (79)
 - Water Tank (1)
 - Borehole (1)
 - Shop (IDP)
 - Bakery (1)
 - Lamp (24)

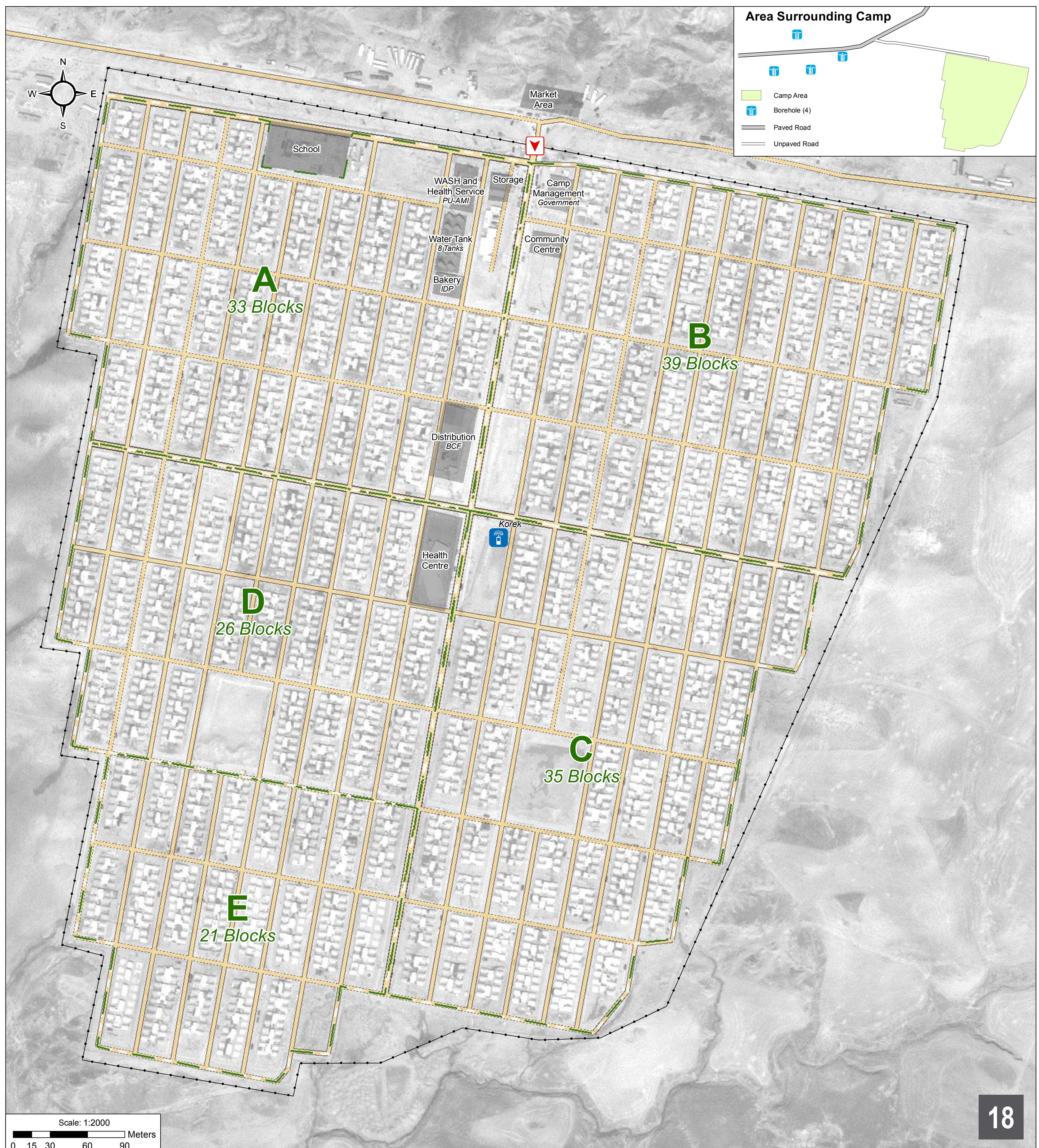
Total number of Caravans: 299



Thematic Data: 21/12/2015 - REACH
Administrative boundaries: GADM
Background imagery: 13/08/2015
Projection: WGS 1984 UTM Zone 38N
Contact : iraq@reach-initiative.org
File: IRQ_Map_IDP_Harshm_Road_14Jan2016

Note: Data, designations and boundaries contained on this map are not warranted to be error-free and do not imply acceptance by the REACH partners, associates or donors mentioned on this map.





- Road Type**
- Gravel Road
- Camp Infrastructure**
- Fence
 - Sector (A - E)
 - Office / Facility
 - Entrance
 - Network Tower

GPS Coordinates of Camp Location:
Longitude: 43° 33' 57.89" E
(43.566081)
Latitude: 36° 29' 40.524" N
(36.49459)

Data sources:
Camp Infrastructure: 20 December 2015, REACH Initiative
Background imagery : 08/09/2015
Coordinate System: WGS 1984 UTM Zone 38N

Contact: iraq@reach-initiative.org

File: IRQ_IDP_Bardarash_Road_15Jan2016

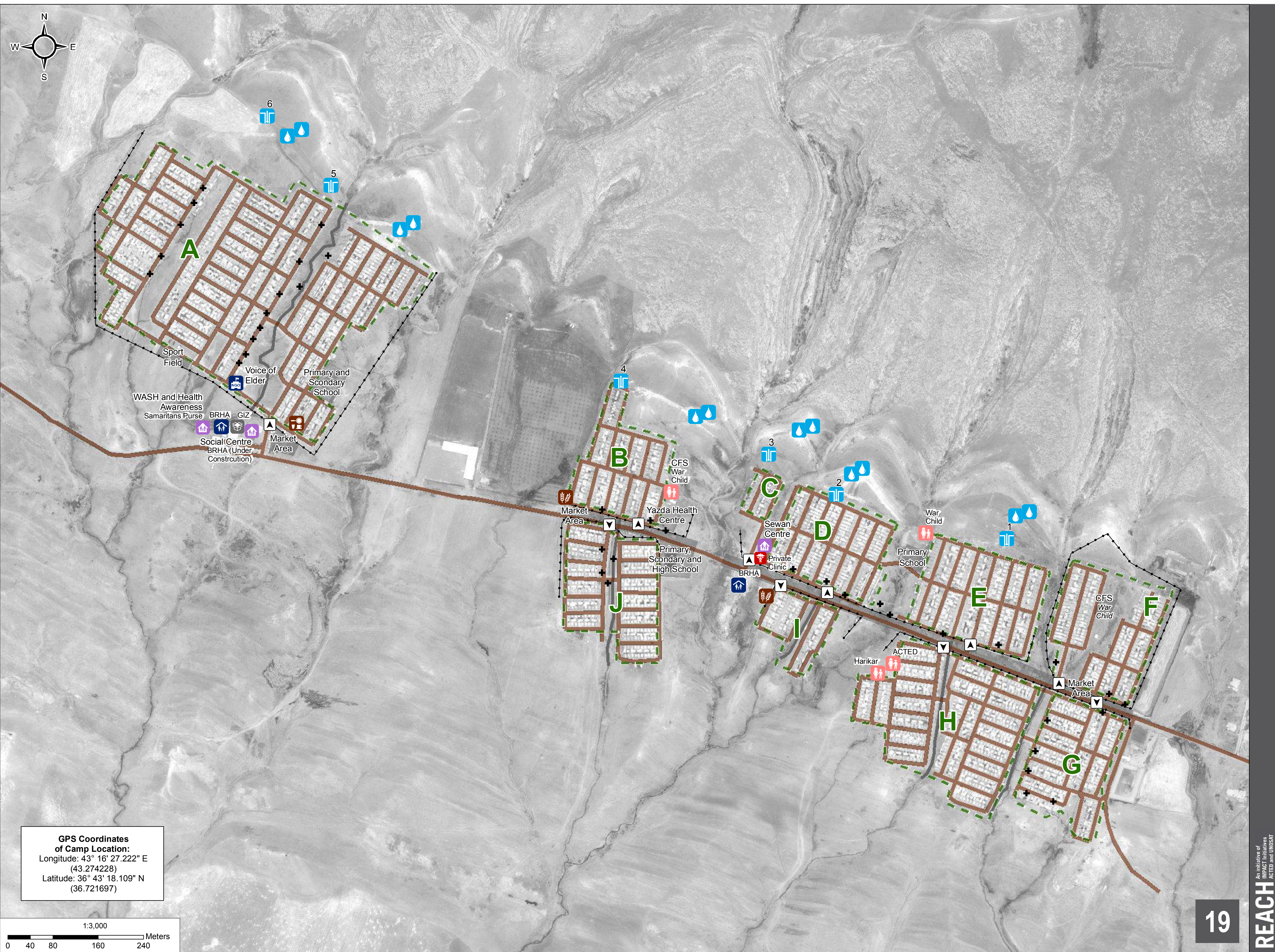
Note: Data, designations and boundaries contained on this map are not warranted to error-free and do not imply acceptance by the REACH partners, associated, donors mentioned on this map.

Road Type

- Muddy Road

Camp Infrastructure

- Fence
- Sector (A - J)
- Office/Facility
- Sector Entrance
- Health
- Camp Management
- Office
- Child Friendly Space
- Community Centre
- Water Tank (12)
- Borehole (6)
- Kitchen
- Bakery
- Electrical Pole (38)
- Grey Water

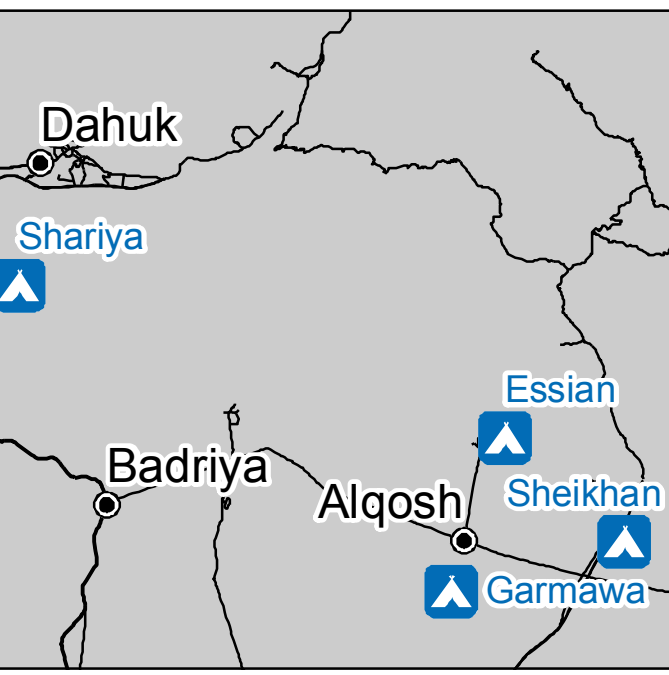


Thematic Data: 30/12/2015 - REACH
Administrative boundaries: GADM
Background imagery: 05/07/2015

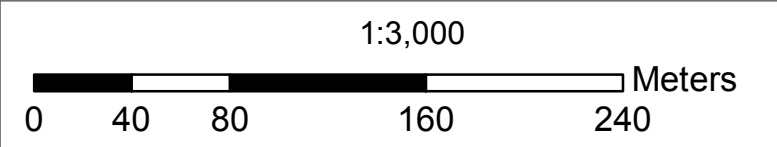
Projection: WGS 1984 UTM Zone 38N

Contact : iraq@reach-initiative.org
File: IRQ_Map_IDP_Essian_Road_5Jan2016

Note: Data, designations and boundaries contained on this map are not warranted to be error-free and do not imply acceptance by the REACH partners, associates or donors mentioned on this map.



GPS Coordinates of Camp Location:
Longitude: 43° 16' 27.222" E
(43.274228)
Latitude: 36° 43' 18.109" N
(36.721697)



Road Type

- Black Top Road
- Gravel Road

Camp Infrastructure

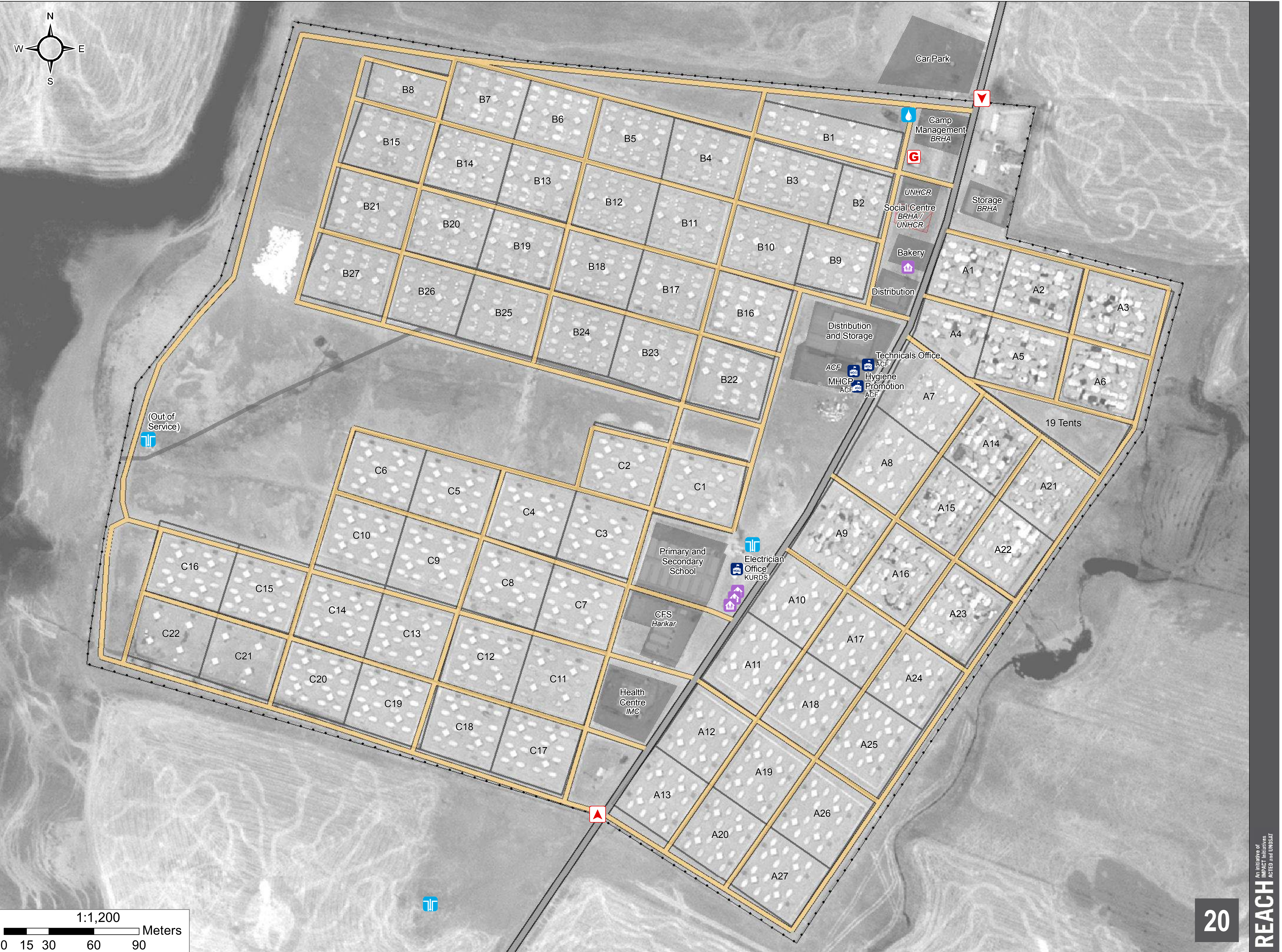
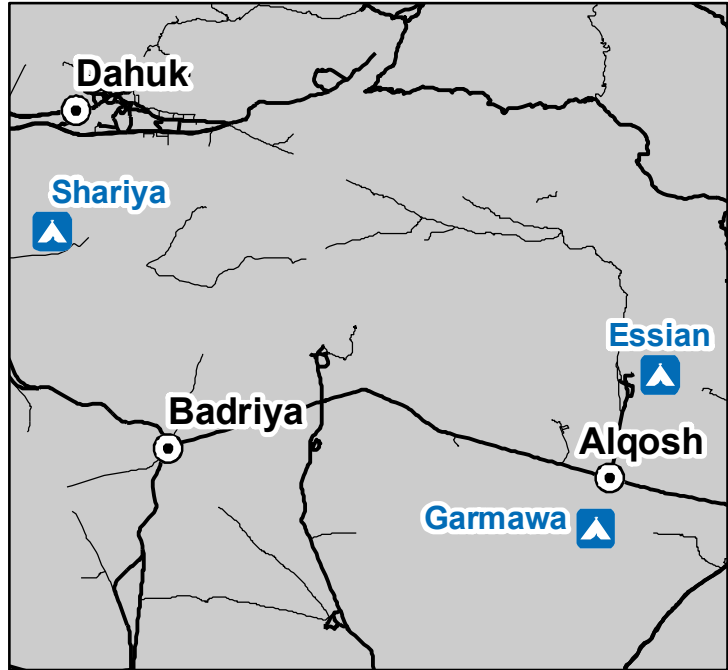
- Fence
- Block
- Under Construction
- Office / Facility
- Entrance
- Office
- Community Centre
- Borehole (3)
- Water Tank (1)
- Generator
- Grey Water

GPS Coordinates
of Camp Location
Longitude :43° 14' 12.803" E
(43.23689)
Latitude: 36° 38' 51.682" N
(36.647689)

Thematic Data: 16 December 2015 - REACH
Administrative boundaries: GADM
Background imagery:
05/07/2015
Projection: WGS 1984 UTM Zone 38N

Contact : iraq@reach-initiative.org
File:
IRQ_IDP_GarmawaCamp_Road_10Jan2016

Note: Data, designations and boundaries
contained on this map are not warranted to be
error-free and do not imply acceptance by the
REACH partners, associates or donors
mentioned on this map.



Road Type

Gravel Road

Camp Infrastructure

Fence

Sector

Under Construction

Office / Facility

Entrance

Health

Distribution

Community Centre

Water Tank (12)

Borehole (2)

Bakery

**GPS Coordinates
of Camp Location**
Longitude :43° 25' 59.683" E
(43.43325)
Latitude: 36° 40' 9.888" N
(36.66941)

Thematic Data: 20 December 2015
Administrative boundaries: GADM
Background imagery: 11/08/2015

Projection: WGS 1984 UTM Zone 38N

Contact : iraq@reach-initiative.org
File:
IRQ_IDP_Mamrashan_Road_10Jan2016

Note: Data, designations and boundaries
contained on this map are not warranted to be
error-free and do not imply acceptance by the
REACH partners, associates or donors
mentioned on this map.



Road Type

Gravel Road

Camp Infrastructure

Fence

Sector (A - E)

Office / Facility

Entrance

Health

Camp Management

Office

Community Centre

Water Tank (9)

Borehole (5)

Storage

GPS Coordinates

of Camp Location:

Longitude: 43° 47' 59" E

(43.799722)

Latitude: 36° 41' 22.434" N

(36.689565)

Thematic Data: 22/12/2015 - REACH

Administrative boundaries: GADM

Background imagery: 05/07/2015

Projection: WGS 1984 UTM Zone 38N

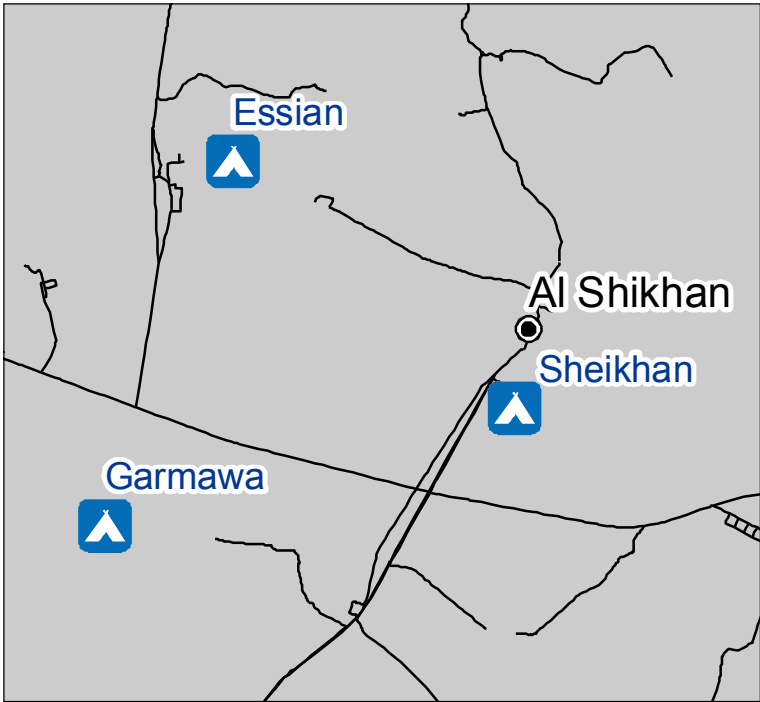
Contact : iraq@reach-initiative.org

File: IRQ_Map_IDP_Mamilian_Road

_10Jan2016

Note: Data, designations and boundaries contained on this map are not warranted to be error-free and do not imply acceptance by the REACH partners, associates or donors mentioned on this map.





Road Type

- Gravel Road
- Muddy Road

Camp Infrastructure

- Fence
- Block
- Office / Facility

- Entrance
- Office
- Distribution
- Community Centre
- Borehole (3)
- Water Tank (2)

GPS Coordinates of Camp Location:
Longitude: 43° 20' 36.643" E
(43.34351)
Latitude: 36° 40' 26.758" N
(36.6741)

Thematic Data: 17/12/2015 - REACH
Administrative boundaries: GADM
Background imagery: ESRI
Projection: WGS 1984 UTM Zone 38N
Contact : iraq@reach-initiative.org
File: IRQ_Map_IDP_Sheikhan_Road_10Jan2016

Note: Data, designations and boundaries contained on this map are not warranted to error-free and do not imply acceptance by the REACH partners, associated, donors mentioned on this map.

Road Type

- Black Top Road
- Muddy Road

Camp Infrastructure

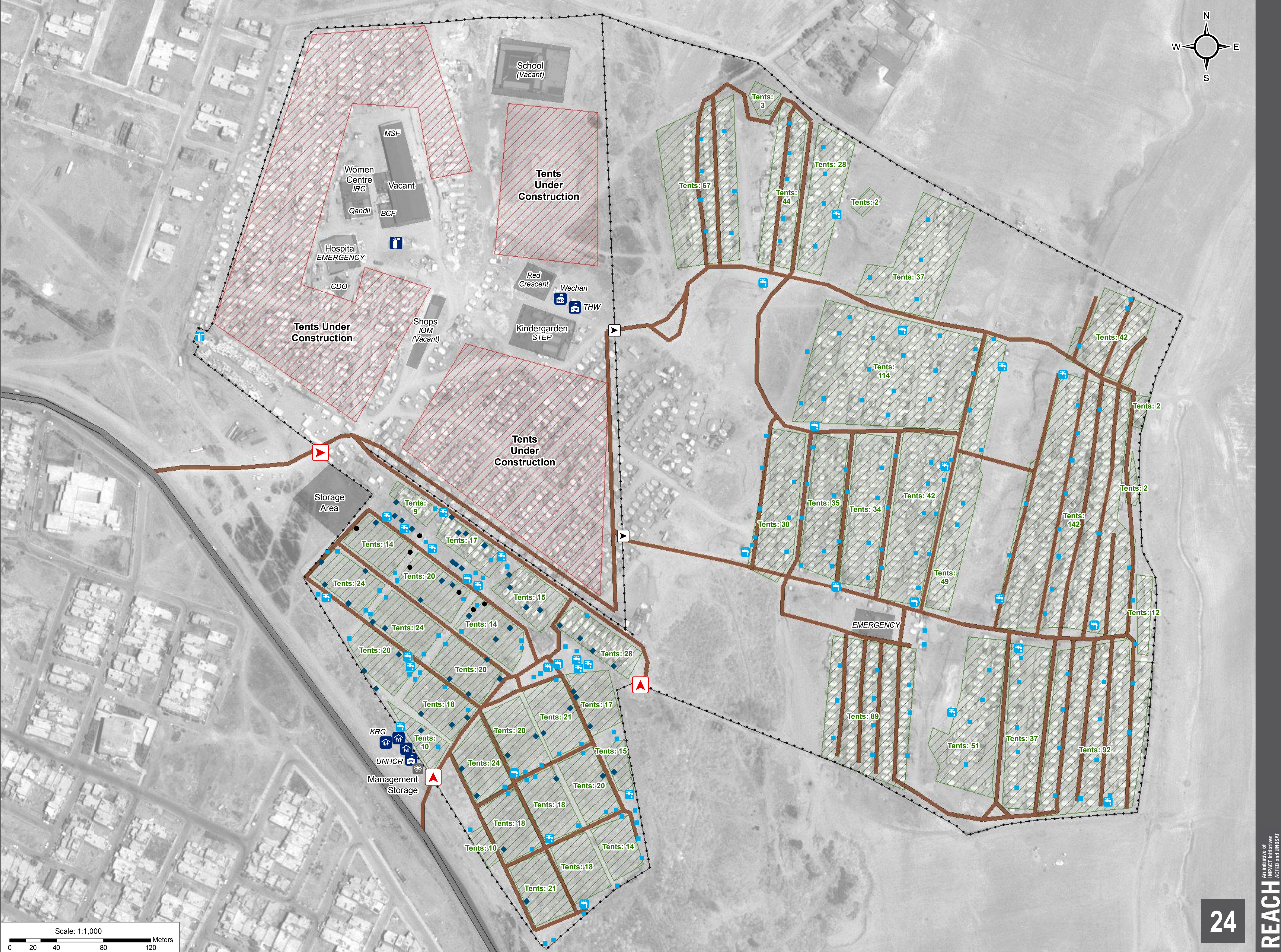
- Fence
- Tented Area
- Under Construction
- Office / Facility
- Entrance
- Inside Camp Gate
- Camp Management
- Office
- Storage
- Latrine and Shower (190)
- Latrine (7)
- Shower (57)
- Borehole (1)
- Tapstand (35)
- Fire Station

GPS Coordinates of Camp Location:
Longitude: 45° 35' 24.967" E (45.590269)
Latitude: 35° 25' 55.395" N (35.432054)

Thematic Data: 07/01/2016 - REACH
Administrative boundaries: GADM
Background imagery: 19/08/2015
Projection: WGS 1984 UTM Zone 38N

Contact : iraq@reach-initiative.org
File: IRQ_Map_IDP_ArbatIDP_Road_21Jan2016

Note: Data, designations and boundaries contained on this map are not warranted to be error-free and do not imply acceptance by the REACH partners, associates or donors mentioned on this map.



Road Type

- Black Top Road
- Gravel Road

Camp Infrastructure

- Camp Delineation
- Fence
- Sector
- Under Construction
- Office / Facility
- Entrance
- Office
- Tapstand (23)

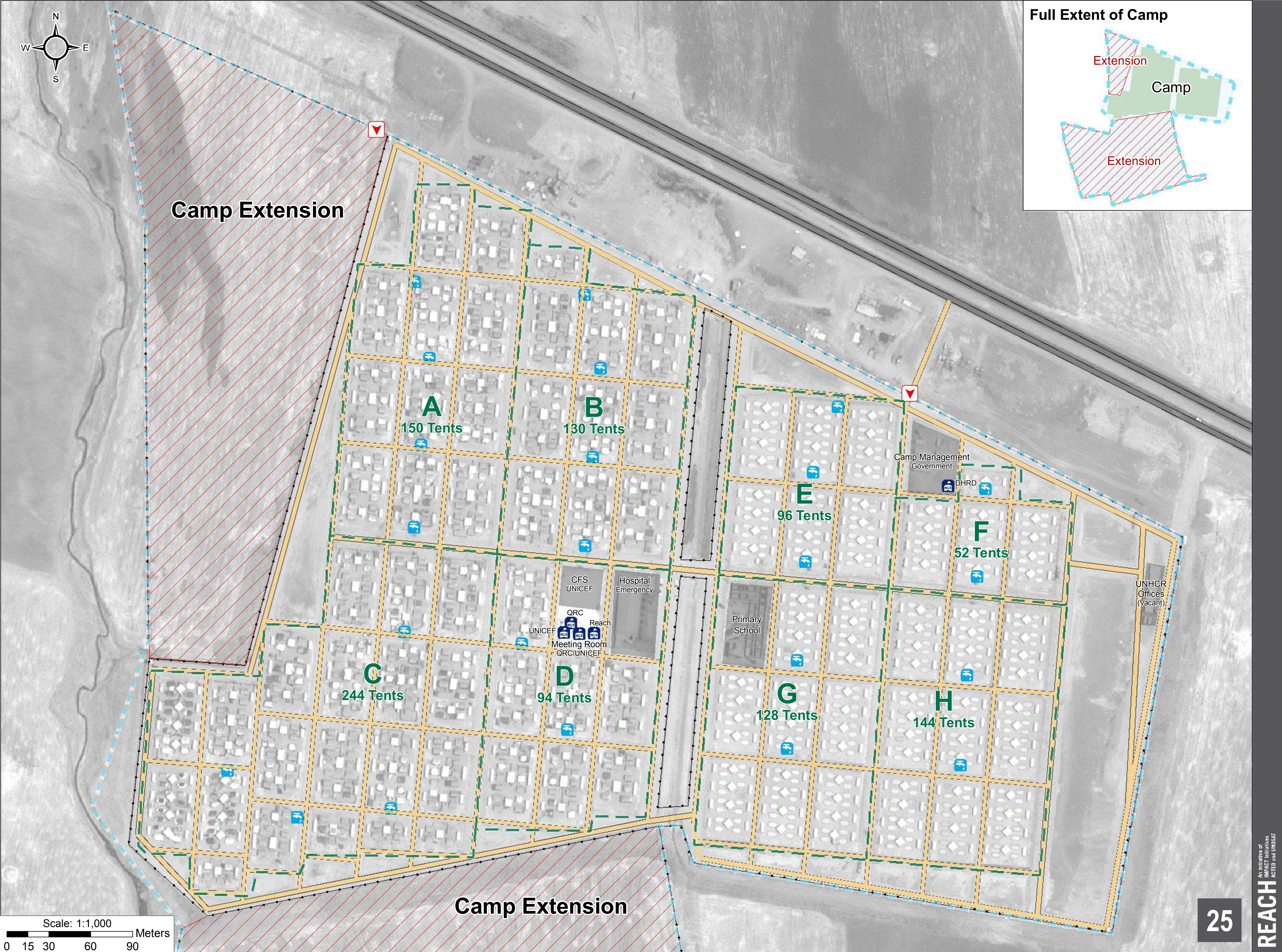
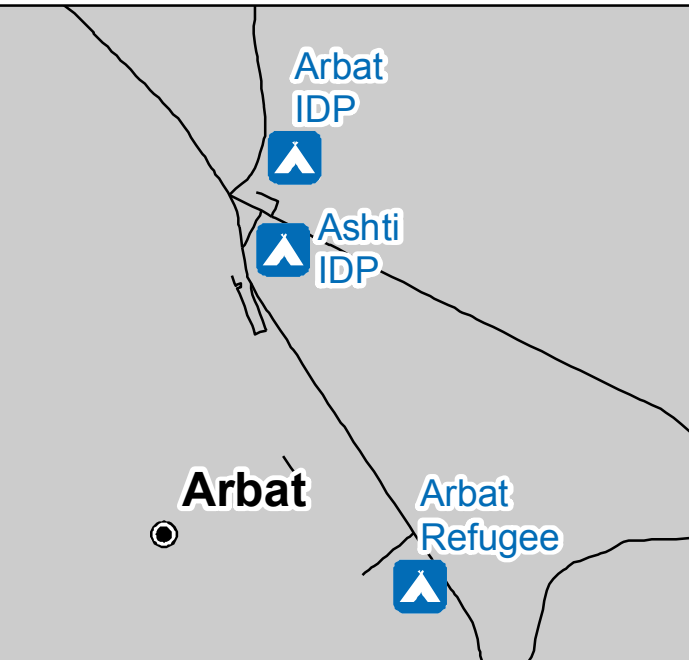
**GPS Coordinates
of Camp Location**
Longitude :45° 36' 21.359" E
(45.60593)
Latitude: 35° 25' 3.431" N
(35.41762)

Thematic Data: 28 December 2015 - REACH
Administrative boundaries: GADM
Background imagery: 13/08/2015

Projection: WGS 1984 UTM Zone 38N

Contact : iraq@reach-initiative.org
File:
IRQ_IDP_Ashti_Road_10Jan2016

Note: Data, designations and boundaries
contained on this map are not warranted to be
error-free and do not imply acceptance by the
REACH partners, associates or donors
mentioned on this map.



Full Extent of Camp

