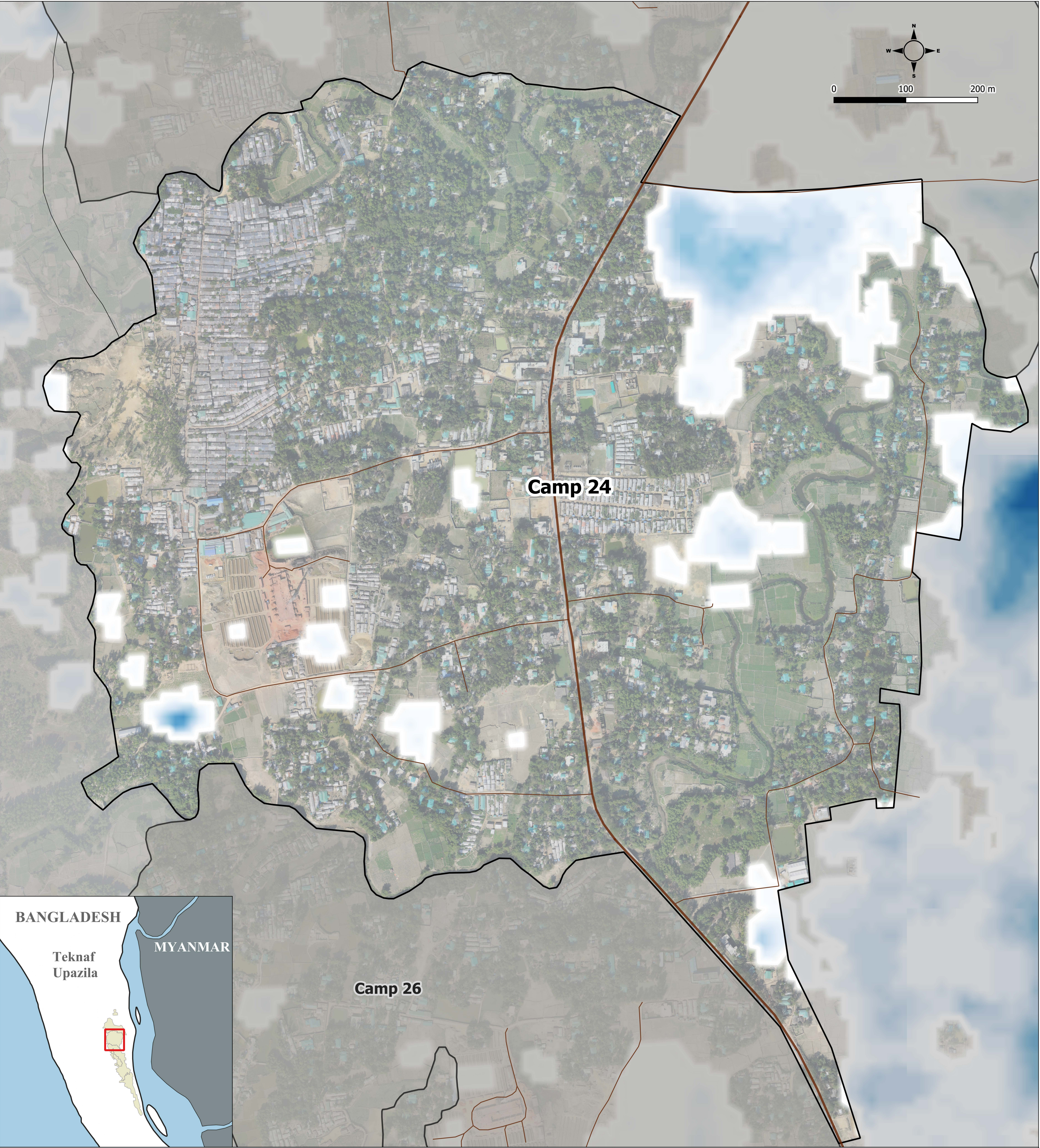


BANGLADESH - Teknaf Upazila - Camp 24  
 Hazard Mapping- Standing Water Analysis

For Humanitarian Purposes Only  
 Production Date: 2019-03-12



Roads

Camp 24 Boundary

Other Camp Boundary

# of Images with Standing Water Detected

1

20

**Data Source:**

- Camp Boundaries: ISCG
- Union Boundaries, Upazila Boundaries: Bangladeshi Bureau of Statistics
- Standing Water: REACH, 2019. Derived from Sentinel-1 (10 m), 20 dates (Table 1)
- Background: IOM-NPM UAV Imagery. Date: 23 January 2019
- Roads: ©OpenStreetMap contributors

Coordinate System: WGS 1984  
Contact: reach.mapping@impact-initiatives.org

Table 1. Sentinel Imagery Dates	
01 June, 2018	31 July, 2018
03 June, 2018	02 August, 2018
13 June, 2018	12 August, 2018
15 June, 2018	24 August, 2018
25 June, 2018	26 August, 2018
27 June, 2018	05 September, 2018
07 July, 2018	07 September, 2018
09 July, 2018	17 September, 2018
19 July, 2018	19 September, 2018
21 July, 2018	29 September, 2018

**Summary:**  
 This map displays standing water detected from remote sensing analyses of twenty Sentinel-1 images with 10 m resolution (table 1). This is not a quantitative analysis of flood risk, but rather an analysis to detect the presence or absence of standing water on each investigated date. Therefore, Shading indicates the number of images/dates in which standing water was detected and darker shades represent locations where standing water appeared more often in the selection of images analyzed. These results represent a preliminary investigation and have not been validated in the field. The results are only representative of the dates analyzed and the classification scheme utilized. Remote sensing techniques such as this are inherently limited by a variety of factors, in particular the spatial resolution of the data analyzed.

For more details on the remote sensing methodology please refer to :  
<http://www.un-spider.org/advisory-support/recommended-practices/recommended-practice-flood-mapping/>

*Note: Maps are for navigation and orientation purposes only. Data, designations and boundaries contained on this map are not warranted to be error-free and do not imply acceptance by REACH or ECHO.*

Funded By:  
 European Union  
 Civil Protection and  
 Humanitarian Aid

REACH
 An initiative of  
 IMPACT Initiatives,  
 ACTED and UNOSAT