

SYRIA MARKET MONITORING EXERCISE

Snapshot: 18-26 June 2018

Cash-Based Responses
Technical Working Group

REACH Informing
more effective
humanitarian action

INTRODUCTION

To inform humanitarian cash programming, REACH and the Cash-Based Responses Technical Working Group (CBR-TWG) conduct monthly market monitoring throughout Syria to assess the availability and prices of 36 basic commodities that are typically sold in markets and consumed by average Syrian households, including food and non-food items, water, fuel, and cellphone data.

Of these, 18 items comprise the Survival Minimum Expenditure Basket (SMEB), see below, which represents the minimum culturally adjusted items required to support a 6-person household for a month.

Data was collected this month by ACTED, CARE, Shafak, Concern, GOAL, Ihsan, IRC, Mercy Corps, People in Need, REACH, Solidarités International, Violet, and Watan.

Datasets are available on the [REACH Resource Centre](#), [the Humanitarian Data Exchange](#), and are also distributed through partners across the humanitarian community.

SURVIVAL MINIMUM EXPENDITURE BASKET (SMEB) CONTENTS

	Item	Quantity	
Food Items	Bread	37 kg	
	Bulgur	15 kg	
	Chicken	6 kg	
	Eggs	6 kg	
	Fresh vegetables	12 kg	
	Ghee/vegetable oil	7 kg/L	
	Red lentils	15 kg	
	Rice	19 kg	
	Salt	1 kg	
	Sugar	5 kg	
	Tomato paste	6 kg	
	Hygiene items	Bathing soap	12 bars
		Laundry/dish soap	3 kg
Sanitary pads		4 packs of 10	
Toothpaste		200 g	
Fuel	Cooking fuel*	25 L	
Water	Water trucking	4500 L	
Telecom	Smartphone data	1 GB	
Other	Float (other costs)**	7.5% total value	

* Kerosene in northern Syria; LP Gas in southern Syria

** Float only applied to observations where prices of all SMEB contents could be collected

KEY DEVELOPMENTS

WoS: Dollar exchange rate fluctuations

The US Dollar to Syrian Pound exchange rate fell for the third consecutive month in the northwest and south of Syria. However, the exchange rate has increased by 4% in northeast Syria. While the Pound has not strengthened to the degree seen in December 2017, the median SMEB cost for the northwest and south has continued to decrease; for the northeast, where the exchange rate increased, the median complete SMEB cost has increased by 4.2%.

WoS: Eid al-Fitr prices

Eid al-Fitr occurred during the middle of May and is the most likely reason for fluctuation in some prices. Food items in particular varied between sub-districts, as some items were in higher demand for the holiday.

Northwest: Harvest leads to price decreases

During harvest season, vegetable prices are expected to decrease; following this trend the median vegetable SMEB cost has decreased by 14.3%. However, the decrease in price was not as high as expected due to limited rainfall and poor growing conditions, which led to higher production costs.

Northeast: New industrial bakery opens

Local authorities opened a bakery facility capable of producing 10 tons of bread per day in the town of Tal Hmis located in northeast Al-Hasakeh Governorate. This facility will increase the availability of bread for surrounding under-served communities, which have previously relied on home production or have had to travel long distances to purchase bread.

South: SMEB prices decrease

The median regional SMEB cost saw a slight decrease between May and June, decreasing by approximately 1,177 SYP (-1.8%). However, this is expected to change in the coming months.

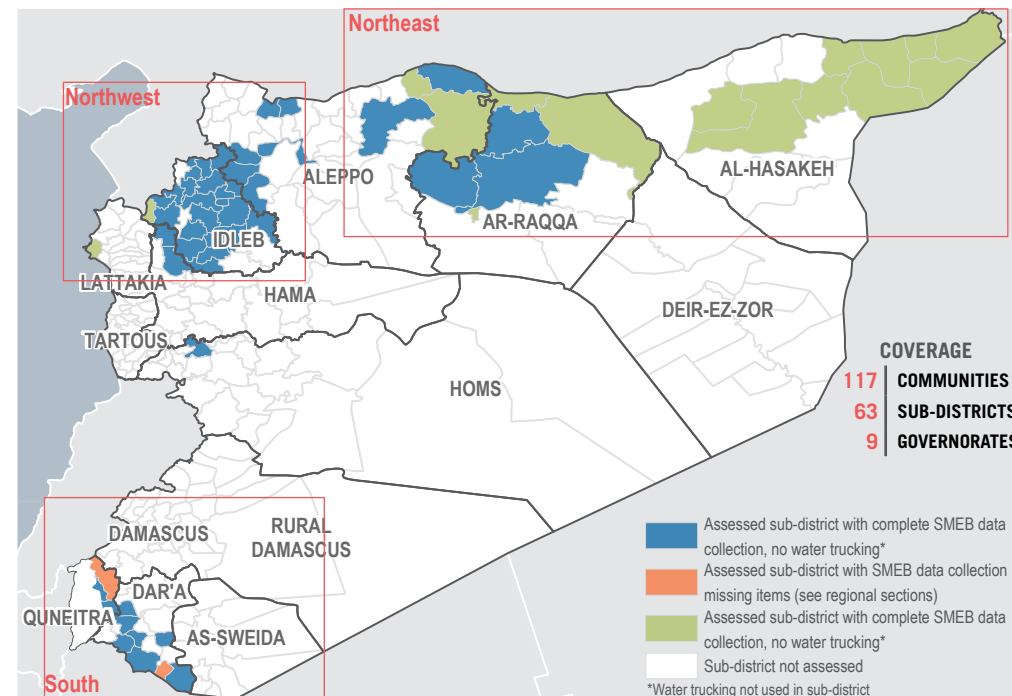
South: Fuel prices increase

Transport fuel has increased by an average of 27% since May 2018. Prices are expected to continue to increase during the southern offensive, as road closures and security incidents lead to communities having limited access to transport fuel supplies.

South: Coverage changes

While coverage remained consistent in June, in the future there may be coverage changes due to the offensive in the south. For a regular update on markets in the south REACH is conducting [rapid market assessments](#).

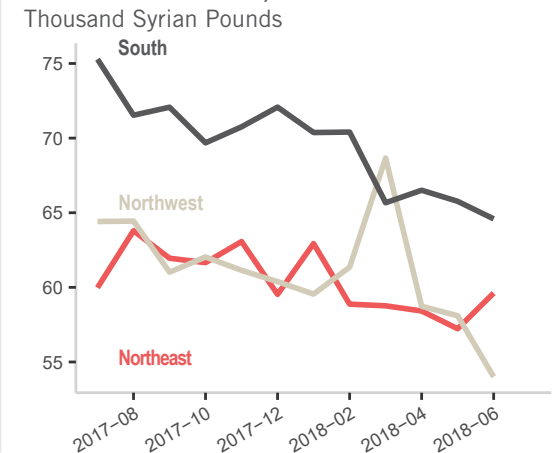
ASSESSED AREAS AND COVERAGE



MEDIAN SMEB COST IN SYP (USD), BY REGION

54,006 SYP (120.97 USD)	NORTHWEST SYRIA - IDLEB, LATTAKIA, & WESTERN ALEPPO GOVERNORATES
59,618 SYP (141.87 USD)	NORTHEAST SYRIA - AL-HASAKEH, AL-RAQQA, & EASTERN ALEPPO GOVERNORATES
64,588 SYP (145.95 USD)	SOUTH SYRIA - DAR'A & QUNEITRA GOVERNORATES

MEDIAN SMEB COSTS, BY MONTH & REGION



KEY DEVELOPMENTS

Fresh vegetable median SMEB cost decreases

The median regional SMEB cost of fresh vegetables has declined by 14.3% with cucumbers decreasing by an average of 20%. However, the decrease in price was not as large as expected. Although, harvesting season for vegetables usually results in a large decline in prices, this year there was less rain during the planting season, resulting in higher costs to grow vegetables and higher prices.

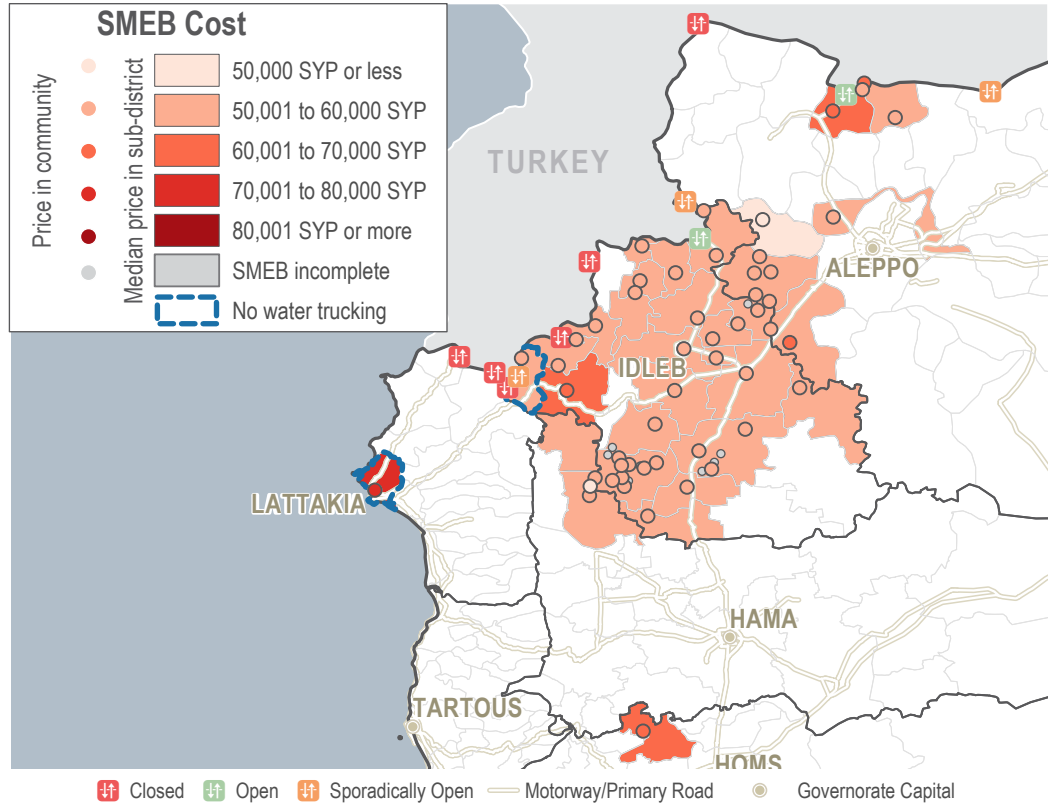
Hygiene items decrease in prices

The median regional SMEB cost of hygiene items has decreased by 7.2% to 4,173 SYP since May 2018. Sub-districts such as Amanaz experienced price decreases of 21.9%, whereas prices have increased by 23.6% in Kafr Takharim and 30.3% Ma'arrat An Nu'man.

Dramatic increase in Idleb water price

While the median SMEB cost of water trucking has decreased by 8.6%, in Idleb water trucking prices have increased by 330% to 3,870 SYP since May 2018, possibly due to the increase in road taxes when transporting goods.

SMEB COST RANGES (SYP), BY SUB-DISTRICTS & COMMUNITIES



MEDIAN SMEB COSTS & CHANGES

Syrian Pounds

Sub-district	SMEB	One month change	Six month change
Northwest Syria	54,006	-7.0%	-9.6%
Abul Thohur	51,557	NA	NA
Ariha	54,040	-2.7%	-2.6%
Armanaz	52,936	-10.7%	-11.1%
Atareb	55,492	-7.4%	+2.6%
A'zaz	60,305	-5.0%	-0.3%
Badama	NA	NA	NA
Bennsh	59,629	-4.6%	-5.5%
Dana	53,557	-13.6%	-13.6%
Daret Azza	47,461	-4.0%	-10.2%
Darkosh	54,871	0.0%	-4.9%
Ehsem	52,194	-16.5%	-18.0%
Harim	54,281	-4.4%	-9.1%
Haritan	51,885	NA	NA
Heish	52,643	+9.7%	NA
Idleb	59,975	+2.7%	-1.4%
Janudiyeh	54,117	+1.9%	-3.3%
Jisr-Ash-Shugur	58,113	-5.2%	NA
Kafr Nobol	52,175	-1.6%	NA
Kafr Takharim	52,689	-3.7%	-14.7%
Khan Shaykun	58,149	-0.7%	NA
Lattakia	NA	NA	NA
Maaret Tamsrin	53,060	-8.2%	-8.3%
Ma'arrat An Nu'man	52,407	+4.5%	NA
Madiq Castle	50,501	-5.5%	-13.5%
Qourqeena	51,013	-3.7%	-5.0%
Saraqab	53,972	-14.1%	-18.4%
Sarmin	58,720	-3.7%	NA
Suran	56,998	-7.2%	-7.3%
Taldu	64,624	NA	NA
Teftnaz	54,942	-2.1%	-7.7%
Zarbah	59,696	-2.8%	+2.1%
Ziyara	52,793	-0.5%	-9.4%

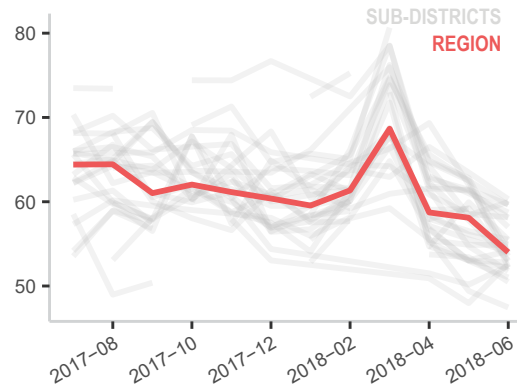
SUB-DISTRICTS WITH INCOMPLETE SMEBS IN JUNE

SUB-DISTRICT	MISSING ITEMS
Badama	Water
Lattakia	Water, Kerosene

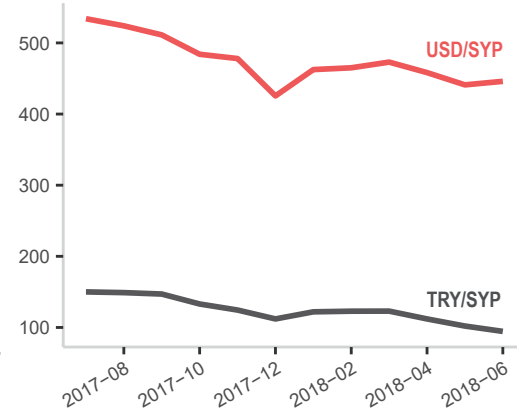
Note: A lack of data for a SMEB item does not imply a shortage

MEDIAN SMEB COSTS, BY MONTH

Thousand Syrian Pounds



EXCHANGE RATES, BY MONTH & CURRENCY



* Denotes sub-districts where water trucking is not common, and therefore does not have water trucking prices in the SMEB cost

MEDIAN SMEB FOOD ITEMS

See Page 1, Syrian Pounds

Sub-district	SMEB Food Items	One month change	Six month change
Northwest Syria	37,458	-5.3%	-7.7%
Abul Thohur	35,255	NA	NA
Ariha	39,155	+0.1%	+3.5%
Armanaz	35,625	-12.3%	-9.7%
Atareb	38,135	-7.4%	+3.8%
A'zaz	40,070	-8.1%	-5.6%
Badama	40,675	+5.9%	-0.2%
Bennsh	41,703	-4.8%	-4.2%
Dana	36,088	-11.9%	-17.2%
Daret Azza	33,815	-4.7%	-7.9%
Darkosh	37,328	+1.1%	-1.8%
Ehsem	35,169	-17.9%	-20.4%
Harim	38,408	-1.8%	-5.1%
Haritan	35,695	NA	NA
Heish	38,598	+15.4%	NA
Idleb	40,232	-1.4%	-6.2%
Janudiyeh	36,998	+2.6%	+0.8%
Jisr-Ash-Shugur	39,240	-7.9%	NA
Kafr Nobol	36,388	-2.9%	NA
Kafr Takharim	37,588	-1.2%	-11.2%
Khan Shaykun	40,480	-0.9%	NA
Lattakia	51,073	+3.4%	+2.0%
Maaret Tamsrin	36,068	-7.2%	-9.4%
Ma'arrat An Nu'man	36,711	+4.4%	NA
Madiq Castle	33,790	-5.4%	-15.9%
Qourqeena	36,750	+5.2%	+2.6%
Saraqab	35,825	-17.3%	-21.1%
Sarmin	41,480	-3.3%	NA
Suran	38,915	-8.3%	-8.0%
Taldu	47,015	NA	NA
Teftnaz	37,175	-3.3%	-7.0%
Zarbah	41,588	+0.5%	+9.0%
Ziyara	34,695	-2.0%	-13.3%

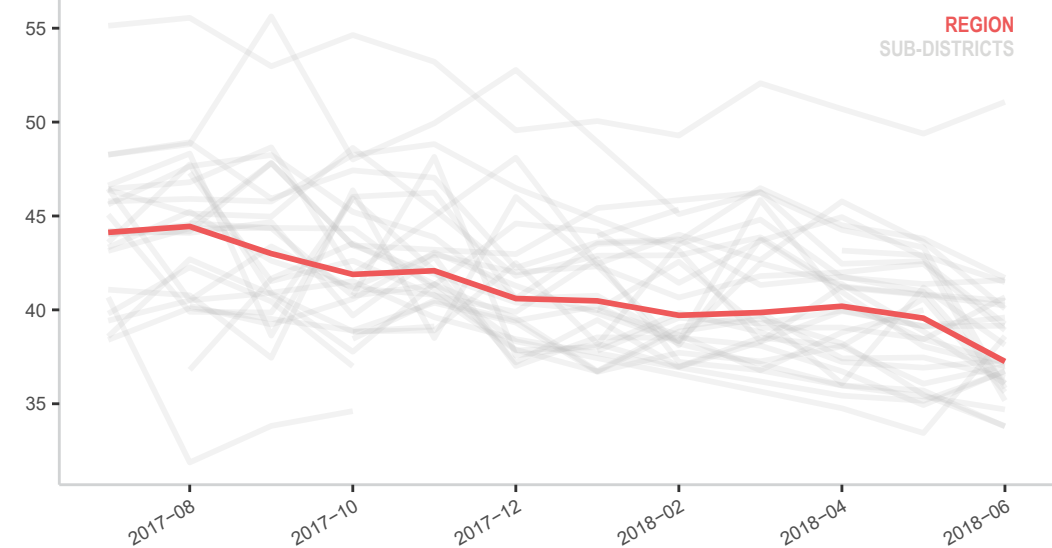
MEDIAN SMEB COOKING FUEL

Kerosene 25L, Syrian Pounds

Sub-district	SMEB Cooking Fuel	One month change	Six month change
Northwest Syria	6,250	-5.2%	-16.7%
Abul Thohur	5,000	NA	NA
Ariha	5,000	-20.0%	-33.3%
Armanaz	6,250	0.0%	-9.1%
Atareb	6,250	-9.1%	-13.0%
A'zaz	6,250	0.0%	+8.7%
Badama	6,250	0.0%	-16.7%
Bennsh	6,250	-16.7%	-21.9%
Dana	7,031	-18.2%	-3.0%
Daret Azza	5,625	-10.0%	-25.0%
Darkosh	6,250	-4.8%	-16.7%
Ehsem	6,406	-14.6%	-14.6%
Harim	6,250	-9.1%	-16.7%
Haritan	6,250	NA	NA
Heish	5,625	-10.0%	NA
Idleb	7,500	0.0%	0.0%
Janudiyeh	6,250	0.0%	-16.7%
Jisr-Ash-Shugur	6,875	+10.0%	NA
Kafr Nobol	6,250	-5.7%	NA
Kafr Takharim	5,000	-27.3%	-20.0%
Khan Shaykun	5,625	-10.0%	NA
Lattakia	3,750	0.0%	0.0%
Maaret Tamsrin	6,250	-16.7%	-9.1%
Ma'arrat An Nu'man	6,000	-11.1%	NA
Madiq Castle	6,875	-8.3%	+1.9%
Qourqeena	6,250	0.0%	-10.7%
Saraqab	6,250	-10.7%	-19.4%
Sarmin	7,500	0.0%	NA
Suran	5,875	-6.0%	+4.4%
Taldu	3,500	NA	NA
Teftnaz	5,938	-5.0%	-20.8%
Zarbah	5,594	-25.4%	-23.8%
Ziyara	7,500	+9.1%	0.0%

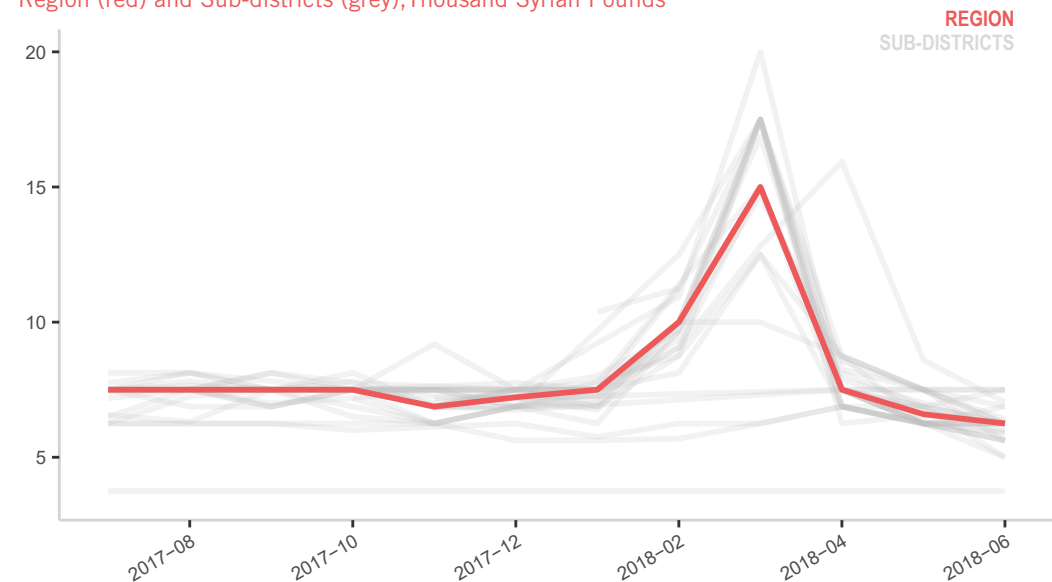
MEDIAN SMEB FOOD COSTS, BY MONTH

Region (red) and Sub-districts (grey), Thousand Syrian Pounds



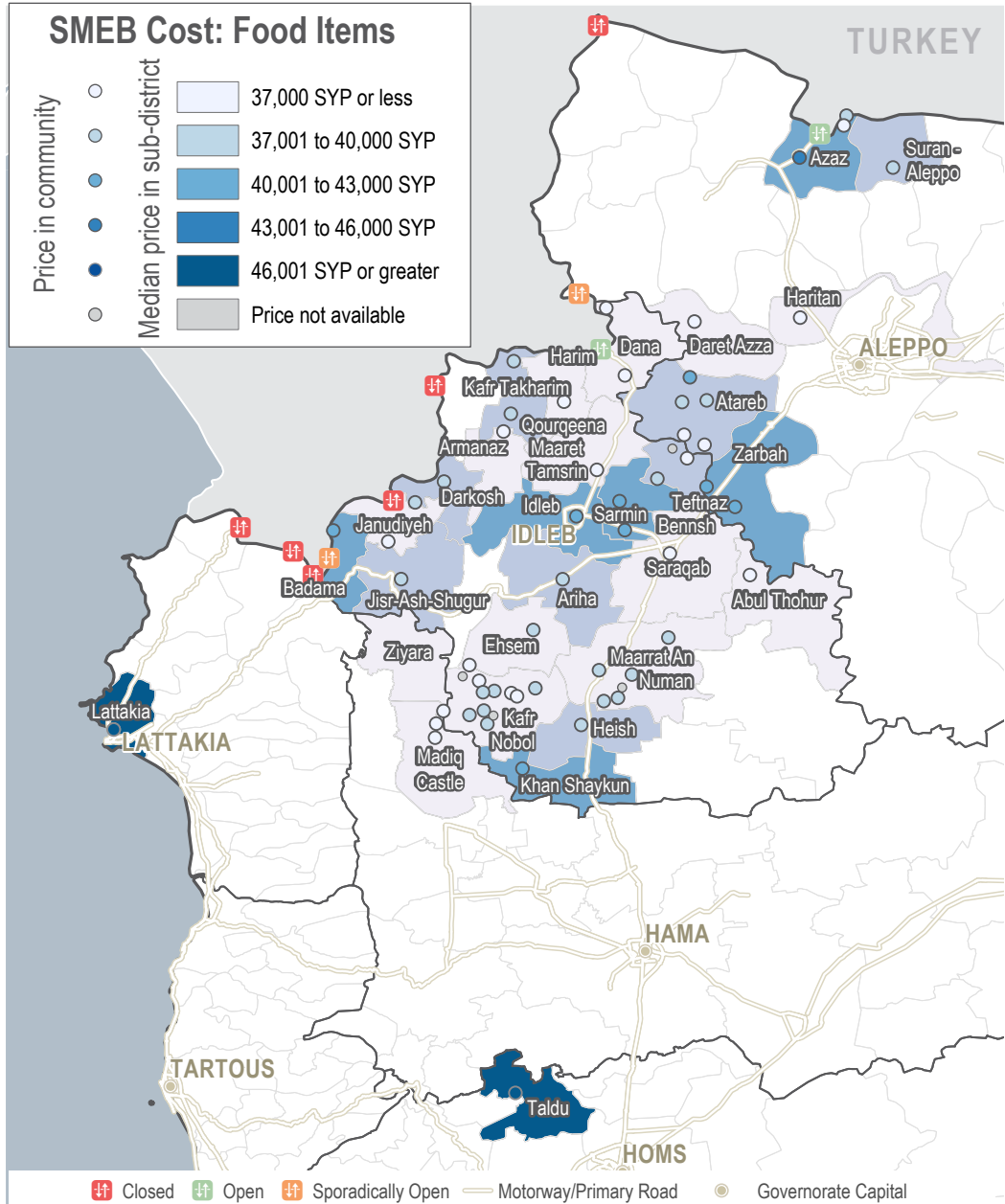
MEDIAN SMEB COOKING FUEL COSTS, BY MONTH

Region (red) and Sub-districts (grey), Thousand Syrian Pounds



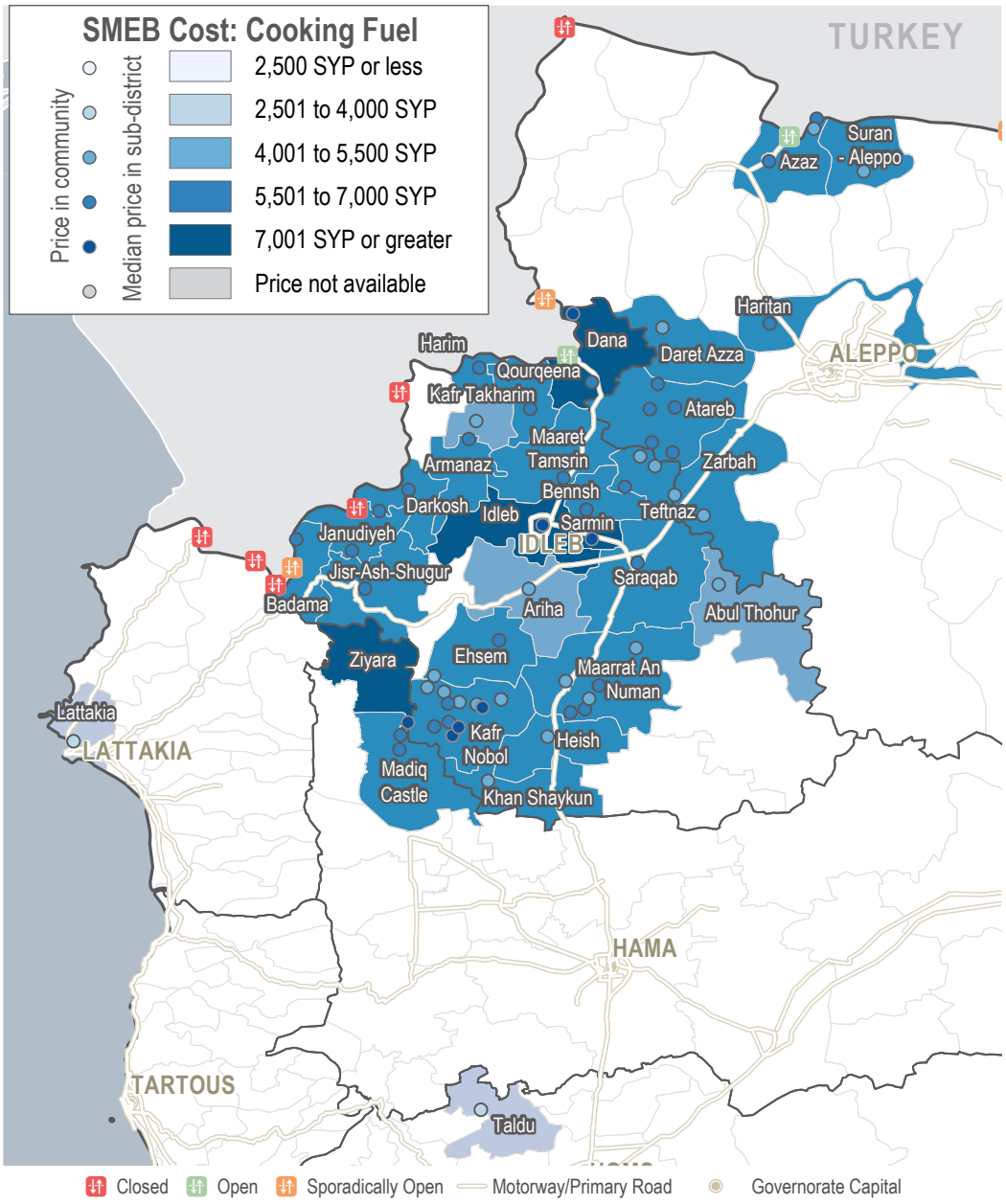
SMEB FOOD ITEMS

Sub-districts & communities, Syrian Pounds



SMEB COOKING FUEL

Sub-districts & Communities, Syrian Pounds



MEDIAN SMEB WATER TRUCKING

4,500L, Syrian Pounds

Sub-district	SMEB Water Truck	One month change	Six month change
Northwest Syria	2,261	-8.6%	-16.2%
Abul Thohur	1,890	NA	NA
Ariha	3,015	-1.5%	-1.5%
Armanaz	3,068	+15.4%	-16.1%
Atareb	1,620	-5.3%	+20.0%
A'zaz	3,578	+6.0%	+18.7%
Badama	NA	NA	NA
Bennsh	1,598	0.0%	-13.4%
Dana	1,755	-46.2%	-7.1%
Daret Azza	1,710	+18.8%	0.0%
Darkosh	2,790	0.0%	-13.3%
Ehsem	1,823	-19.0%	-19.0%
Harim	1,136	+1.0%	-58.3%
Haritan	1,620	NA	NA
Heish	1,890	0.0%	NA
Idleb	3,870	+330.0%	+258.3%
Janudiyeh	2,138	0.0%	0.0%
Jisr-Ash-Shugur	3,060	0.0%	NA
Kafr Nobol	2,835	+43.2%	NA
Kafr Takharim	2,273	-12.7%	-52.5%
Khan Shaykun	2,970	15.8%	NA
Lattakia	NA	NA	NA
Maaret Tamsrin	2,070	-7.1%	+8.2%
Ma'arrat An Nu'man	2,070	+27.8%	NA
Madiq Castle	2,250	+5.3%	+16.3%
Qourqeena	164	-95.5%	-91.9%
Saraqab	2,295	-16.4%	-15.0%
Sarmin	1,530	+47.8%	NA
Suran	3,015	-8.2%	-10.7%
Taldu	4,500	NA	NA
Teftnaz	2,385	0.0%	-5.4%
Zarbah	2,610	-11.5%	-11.5%
Ziyara	2,835	0.0%	+40.0%

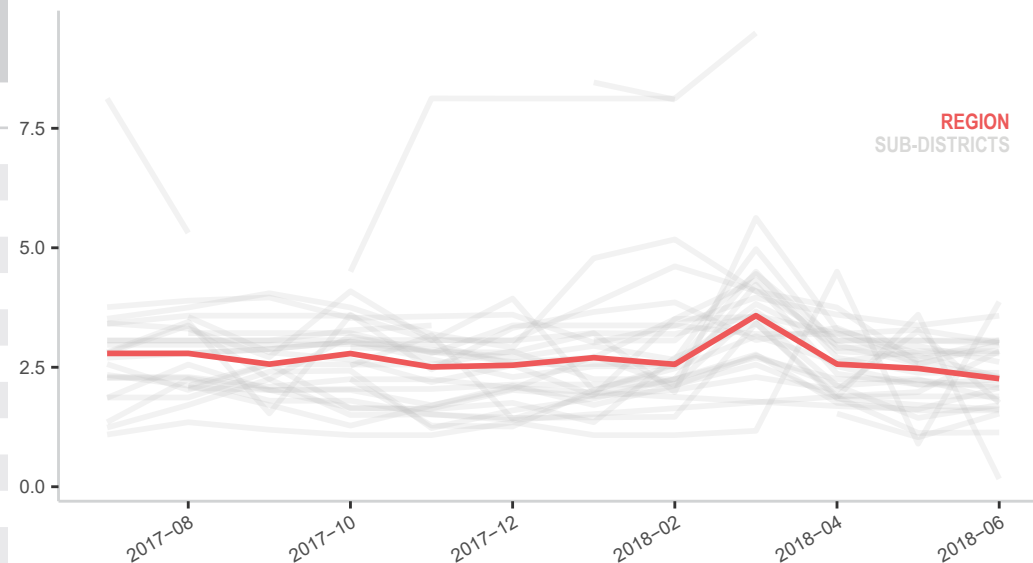
MEDIAN TRANSPORT FUEL PRICE

Diesel and Petrol 1L (Government of Syria and Manually Refined), Syrian Pounds

Sub-district	Diesel and Petrol	One month change	Six month change
Northwest Syria	301	-2.6%	-4.8%
Abul Thohur	297	NA	NA
Ariha	325	-4.4%	+2.4%
Armanaz	263	-4.2%	-8.4%
Atareb	303	-2.4%	-2.4%
A'zaz	288	+0.9%	-5.3%
Badama	323	+2.1%	-4.6%
Bennsh	294	-6.9%	-8.2%
Dana	266	-14.1%	-12.7%
Daret Azza	323	+6.9%	+6.9%
Darkosh	300	-5.2%	-6.4%
Ehsem	292	-14.1%	-9.7%
Harim	338	+3.8%	+2.7%
Haritan	301	NA	NA
Heish	291	-5.7%	NA
Idleb	322	+1.0%	-8.0%
Janudiyeh	299	+3.9%	-5.5%
Jisr-Ash-Shugur	281	-2.2%	NA
Kafr Nobol	309	-1.2%	NA
Kafr Takharim	289	+0.4%	-6.5%
Khan Shaykun	306	-8.1%	NA
Lattakia	205	+1.2%	+1.2%
Maaret Tamsrin	313	+3.3%	-0.8%
Ma'arrat An Nu'man	308	-0.2%	NA
Madiq Castle	306	-1.2%	-2.8%
Qourqeena	280	-1.2%	-1.2%
Saraqab	296	-3.3%	-6.7%
Sarmin	316	-2.9%	NA
Suran	292	-1.7%	+12.3%
Taldu	333	NA	NA
Teftnaz	276	+1.6%	-13.0%
Zarbah	311	-1.4%	-3.0%
Ziyara	316	+3.3%	+1.6%

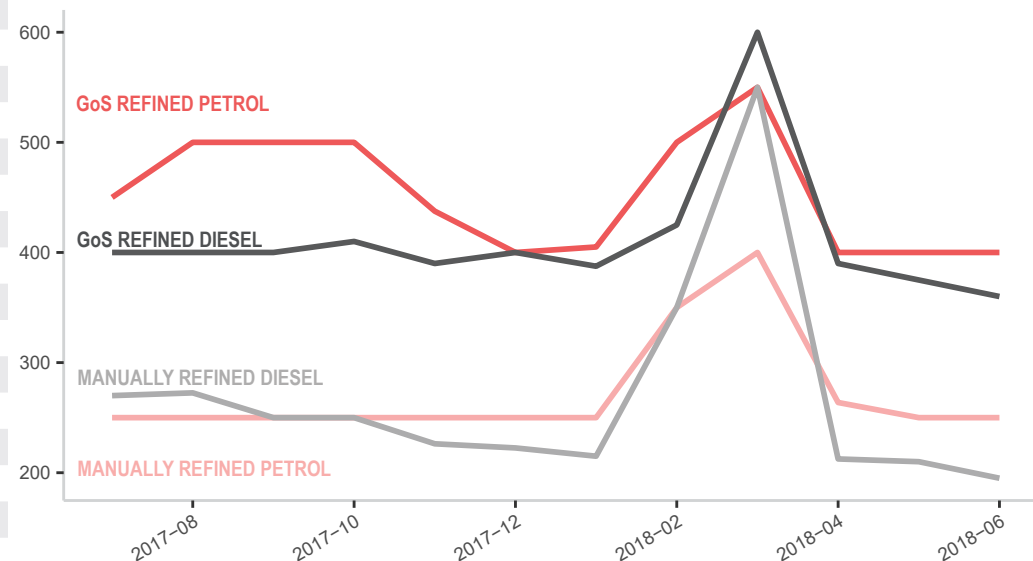
MEDIAN SMEB WATER TRUCKING COSTS, BY MONTH

Thousand Syrian Pounds



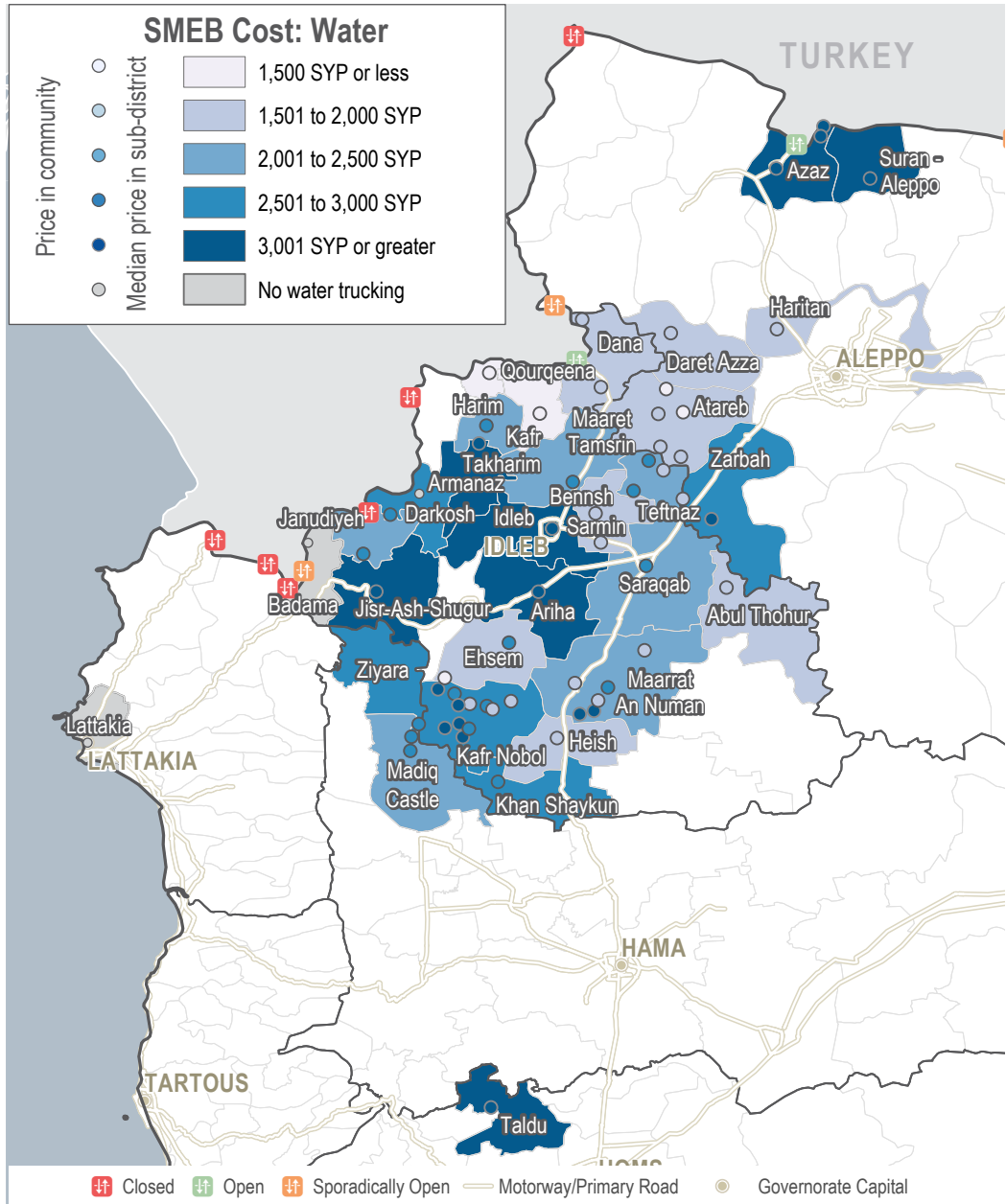
MEDIAN TRANSPORT FUEL COSTS, BY MONTH & TYPE

Thousand Syrian Pounds



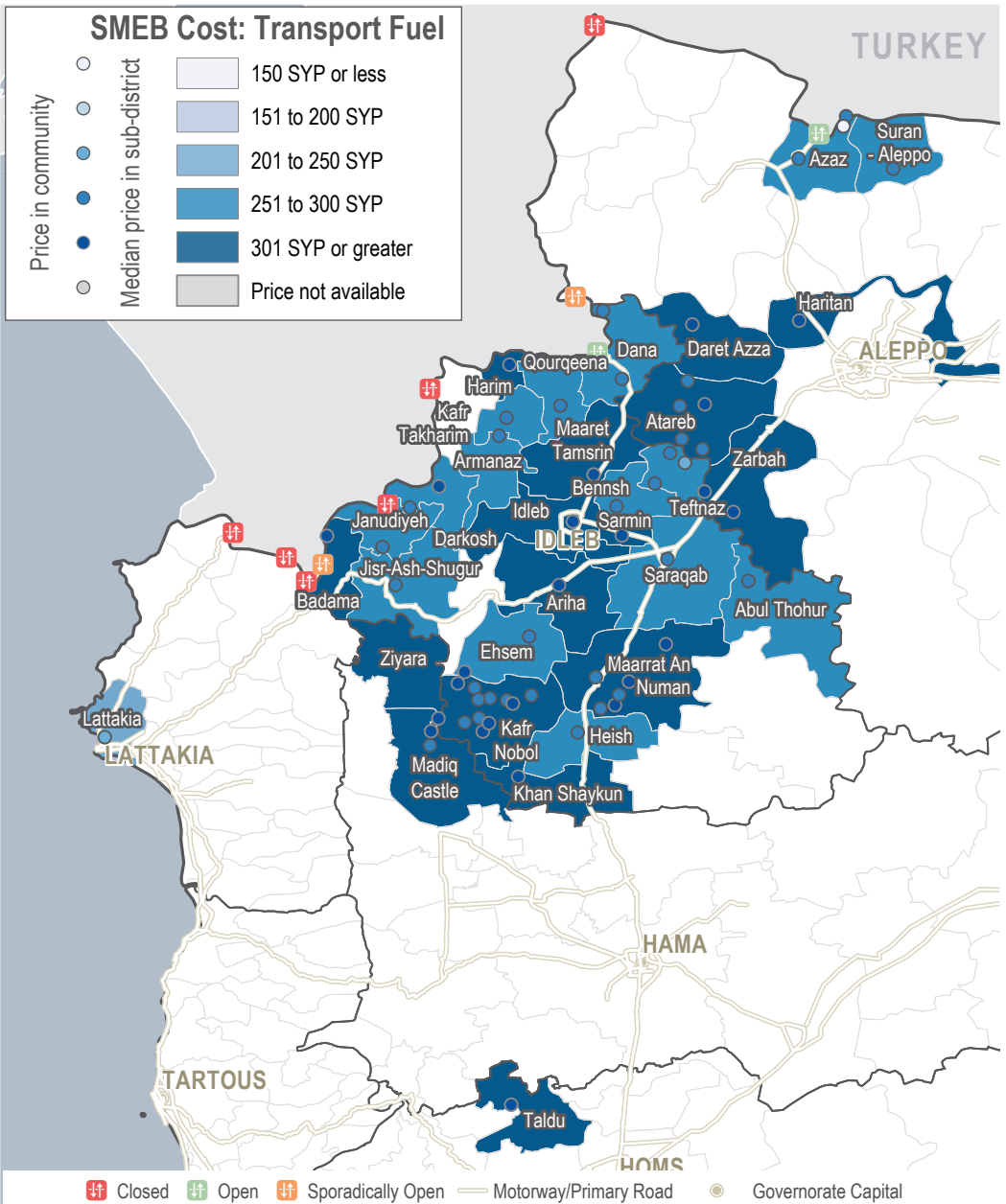
SMEB WATER TRUCKING

Sub-districts & communities, Syrian Pounds



TRANSPORT FUEL

Sub-districts & communities, Syrian Pounds



MEDIAN SMEB HYGIENE ITEMS

12 bars soap, 4 packs of 10 sanitary pads, 200g toothpaste, Syrian Pounds

Sub-district	SMEB Hygiene Items	One month change	Six month change
Northwest Syria	4,173	-7.2%	-7.6%
Abul Thohur	5,515	NA	NA
Ariha	2,700	-3.3%	NA
Armanaz	3,800	-20.7%	-15.8%
Atareb	5,115	-0.4%	-14.5%
A'zaz	5,250	-4.4%	NA
Badama	3,709	-8.1%	NA
Bennsh	5,394	+23.6%	-2.0%
Dana	4,147	+4.9%	NA
Daret Azza	2,600	+13.0%	+17.6%
Darkosh	4,100	-4.6%	-5.9%
Ehsem	4,706	+30.3%	NA
Harim	4,200	-5.5%	-25.1%
Haritan	4,200	-5.5%	-15.5%
Heish	2,458	+10.1%	+3.8%
Idleb	3,788	-22.8%	NA
Janudiyeh	4,456	+1.7%	-12.5%
Jisr-Ash-Shugur	4,334	NA	NA
Kafr Nobol	2,563	+11.4%	+5.6%
Kafr Takharim	3,553	+8.4%	-4.0%
Khan Shaykun	4,268	-2.8%	-11.9%
Lattakia	6,500	-3.3%	NA
Maaret Tamsrin	4,471	-10.6%	+0.1%
Ma'arrat An Nu'man	3,494	+1.1%	-7.5%
Madiq Castle	3,663	+23.6%	-2.0%
Qourqeena	3,790	-5.5%	-15.5%
Saraqab	5,236	-21.9%	-22.6%
Sarmin	3,713	-4.4%	NA
Suran	4,441	NA	-12.5%
Taldu	4,100	-2.7%	-4.4%
Teftnaz	5,012	-0.4%	-14.5%
Zarbah	5,265	-5.3%	-5.7%
Ziyara	3,680	-8.1%	-3.8%

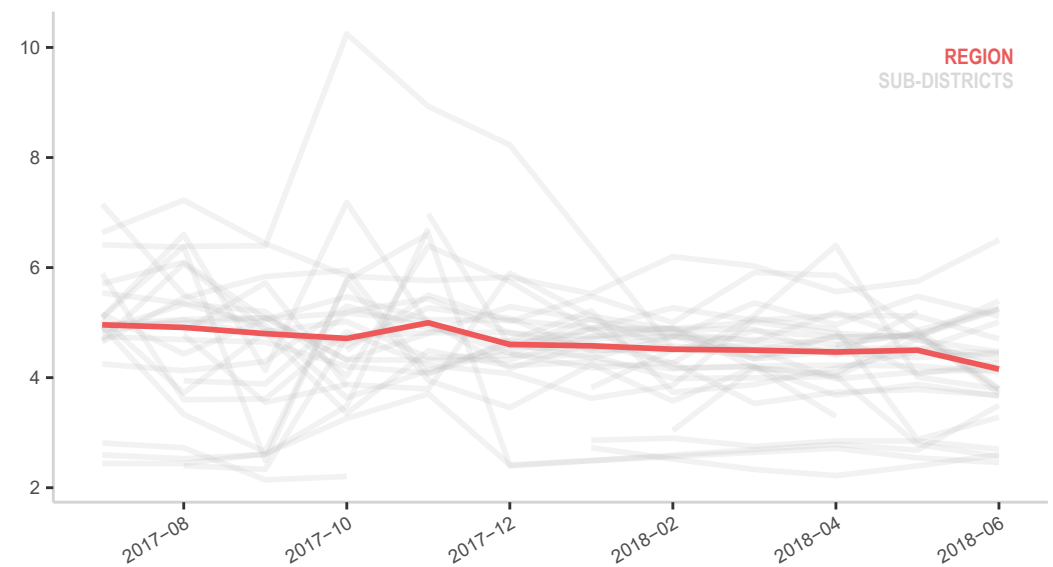
MEDIAN SMEB CELLPHONE DATA

1GB data, Syrian Pounds

Sub-district	SMEB Phone Data	One month change	Six month change
Northwest Syria	500	0.0%	0.0%
Abul Thohur	300	NA	NA
Ariha	400	0.0%	+6.7%
Armanaz	500	-33.3%	0.0%
Atareb	500	0.0%	0.0%
A'zaz	950	-5.0%	+35.7%
Badama	500	+25.0%	0.0%
Bennsh	525	0.0%	+10.5%
Dana	800	+6.1%	+77.8%
Daret Azza	400	0.0%	-20.0%
Darkosh	575	0.0%	-8.0%
Ehsem	450	0.0%	+12.5%
Harim	500	-50.0%	-28.6%
Haritan	500	NA	NA
Heish	400	-20.0%	NA
Idleb	400	+14.3%	-33.3%
Janudiyeh	500	+11.1%	0.0%
Jisr-Ash-Shugur	550	-4.3%	NA
Kafr Nobol	500	+11.1%	NA
Kafr Takharim	600	+20.0%	+20.0%
Khan Shaykun	750	0.0%	NA
Lattakia	4000	0.0%	0.0%
Maaret Tamsrin	500	0.0%	0.0%
Ma'arrat An Nu'man	475	+5.6%	NA
Madiq Castle	400	-15.8%	-27.3%
Qourqeena	500	0.0%	-16.7%
Saraqab	600	0.0%	0.0%
Sarmin	400	-20.0%	NA
Suran	775	0.0%	-3.1%
Taldu	1000	NA	NA
Teftnaz	600	0.0%	0.0%
Zarbah	475	+2.7%	+5.6%
Ziyara	400	-11.1%	-20.0%

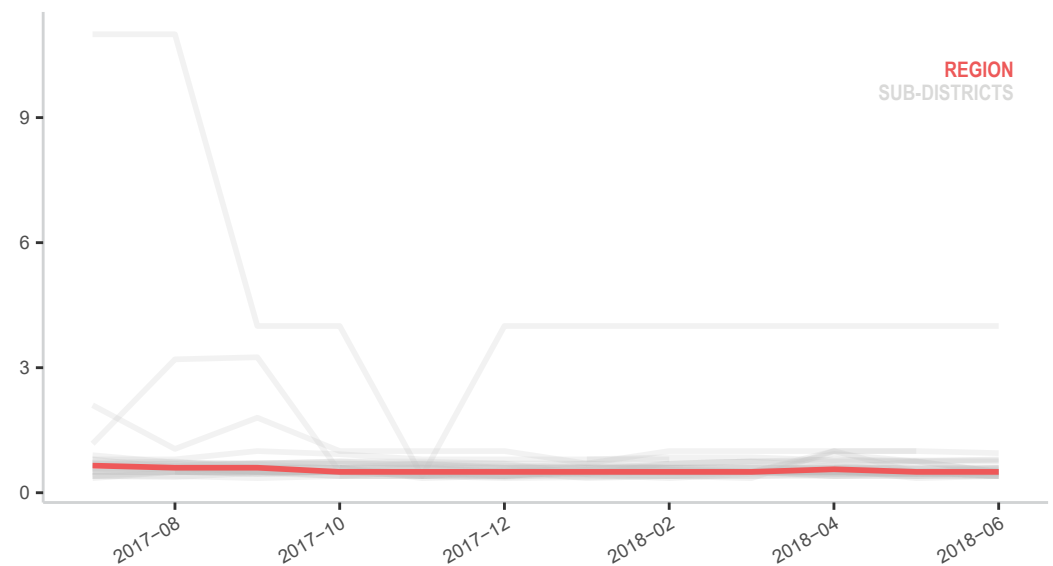
MEDIAN SMEB HYGIENE ITEMS COSTS, BY MONTH

Thousand Syrian Pounds



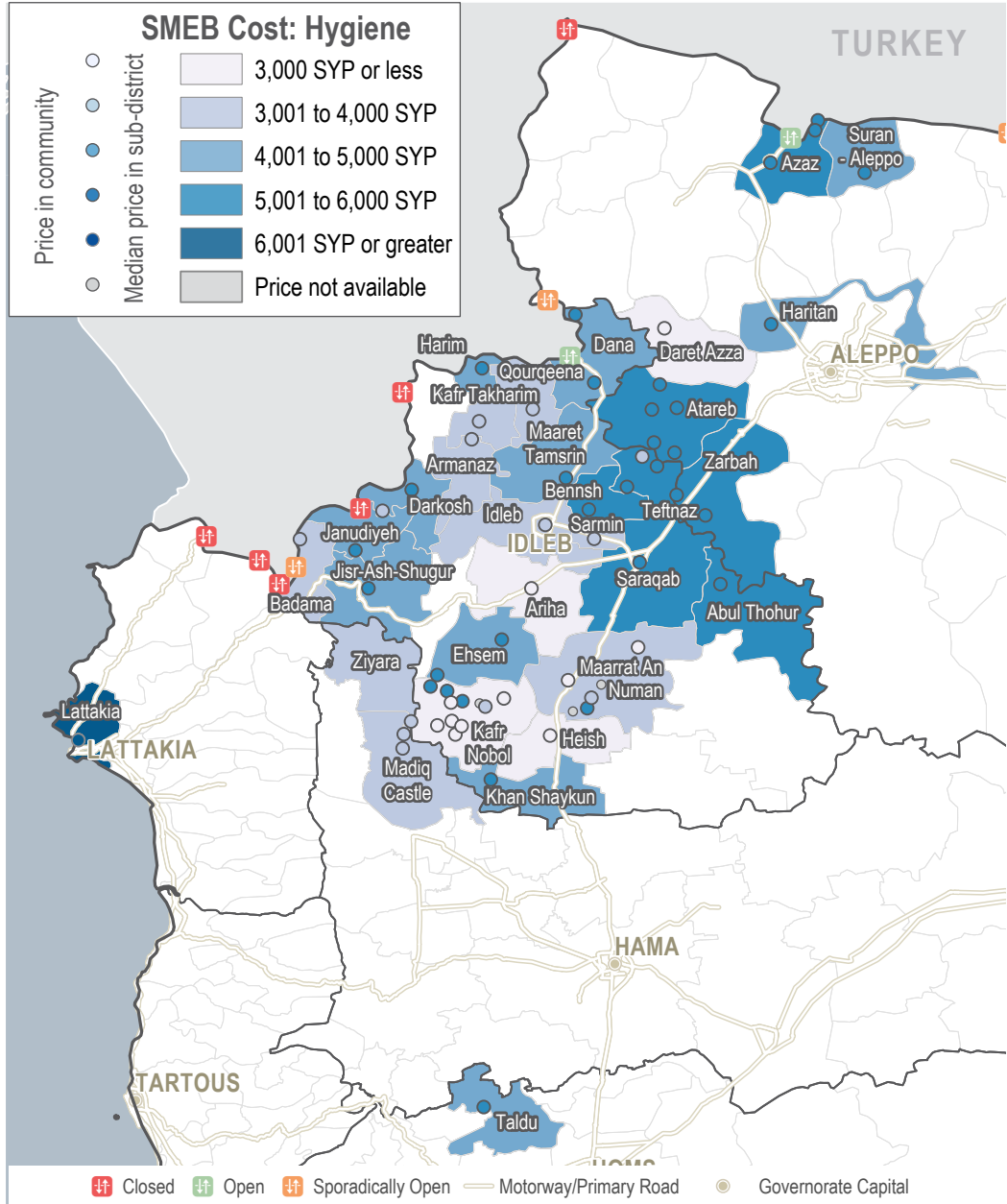
MEDIAN SMEB CELLPHONE DATA COSTS, BY MONTH

Thousand Syrian Pounds



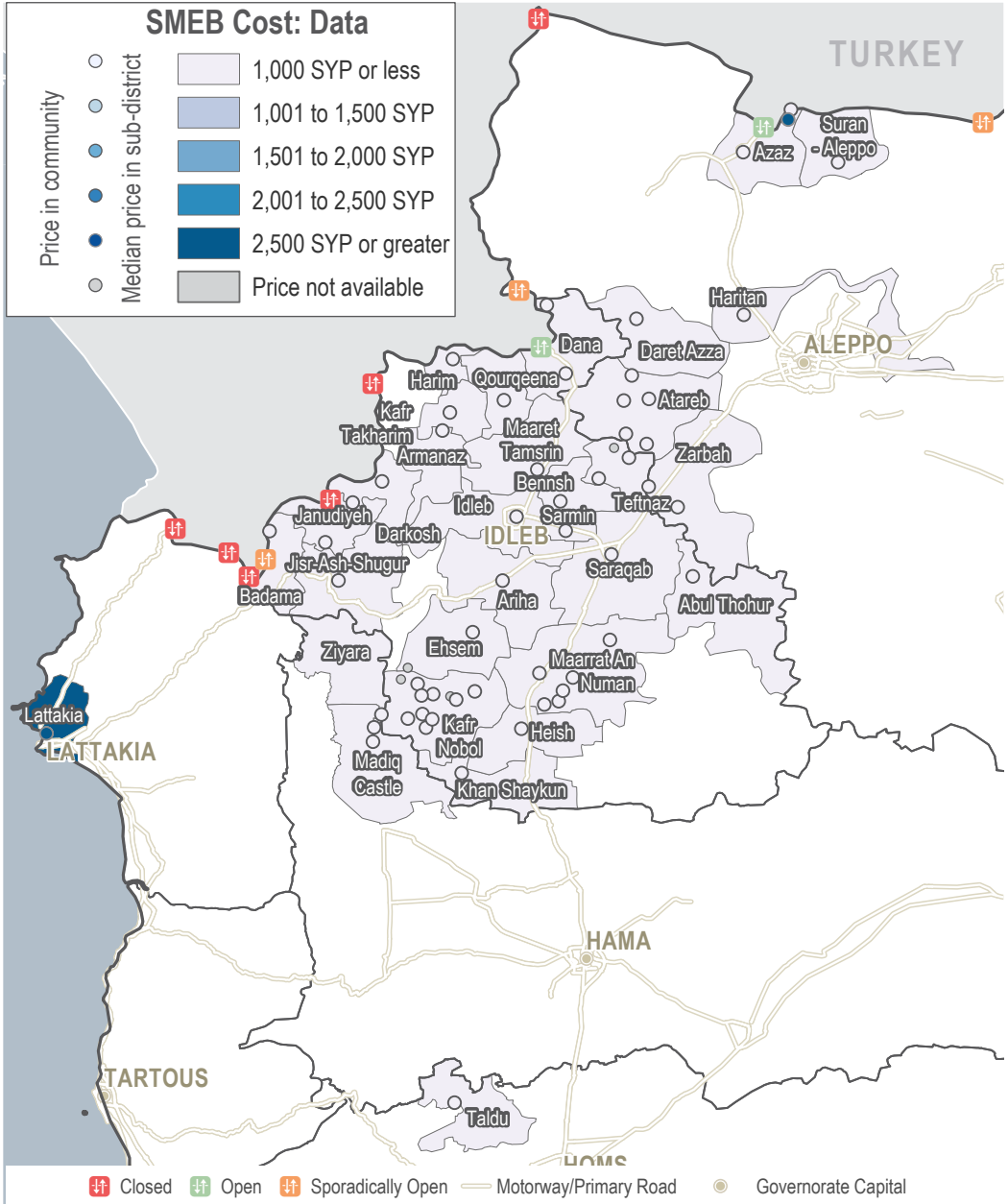
SMEB HYGIENE ITEMS

Sub-districts & Communities, Syrian Pounds



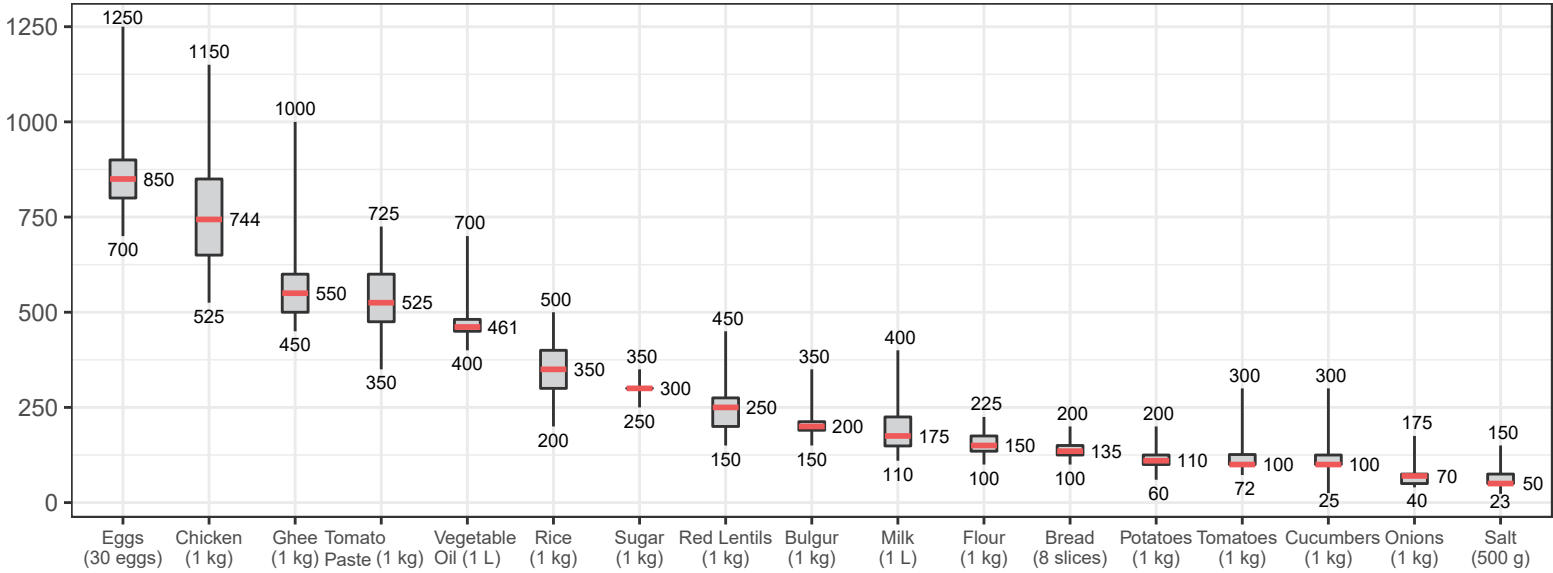
SMEB CELLPHONE DATA

Sub-districts & Communities, Syrian Pounds



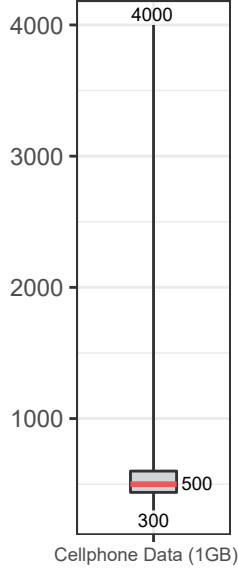
ASSESSED FOOD ITEMS

Syrian Pounds



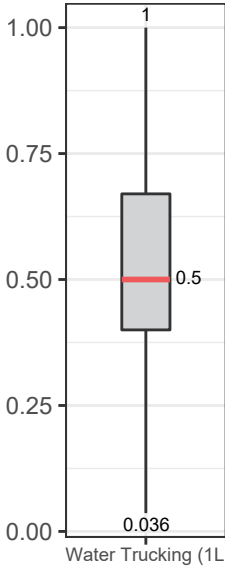
CELLPHONE DATA

1GB



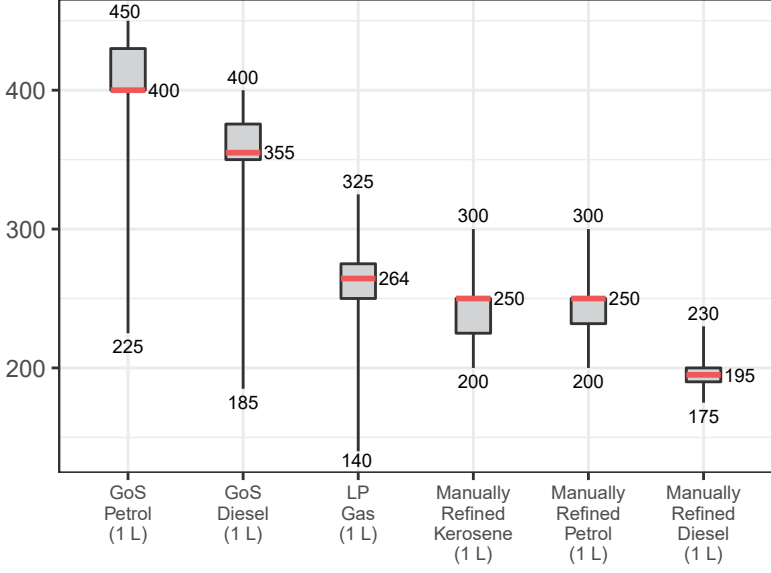
WATER TRUCKING

Syrian Pounds



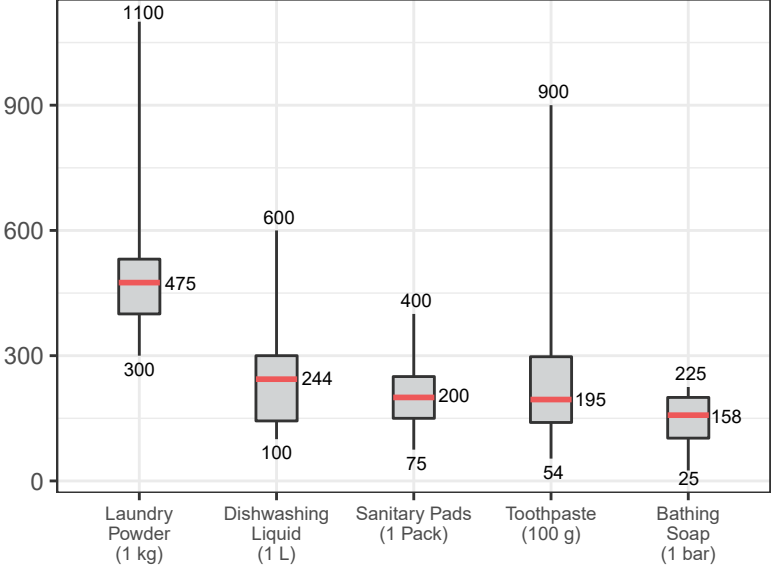
ASSESSED FUEL ITEMS

Syrian Pounds

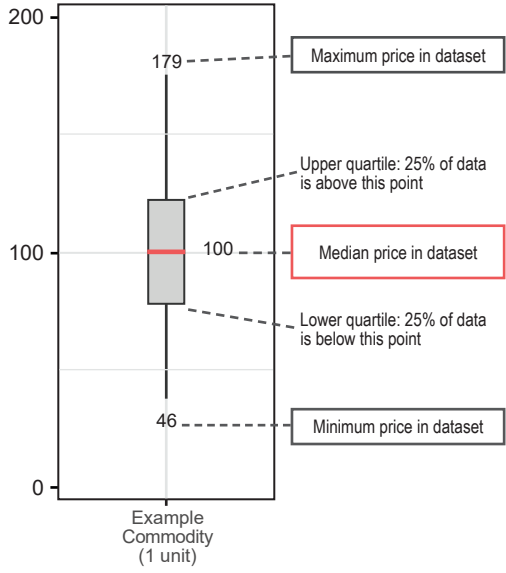


ASSESSED HYGIENE ITEMS

Syrian Pounds



READING BOXPLOTS



KEY DEVELOPMENTS

Median SMEB cost continues decline

The median regional SMEB cost continued to decline for the sixth consecutive month since December 2017. While most assessed sub-districts reported decreases or no change, assessed communities in Al-Hasakeh and Be'r Al-Hulo Al-Wardeyyeh reported that the median SMEB cost increased by greater than 5%.

Trucking load to prioritise agricultural goods

In previous years, there had been agreements where trucks coming to Al-Hasakeh governorate to transport

agricultural products elsewhere in Syria will come loaded with non-food items that will be sold in Al-Hasakeh. However, these agreements are not in place this year and as such it is likely that the region will see relatively higher prices for non-food items during the harvest season while trucks prioritise transporting agricultural goods.

Bread price remains stable as bakery opens

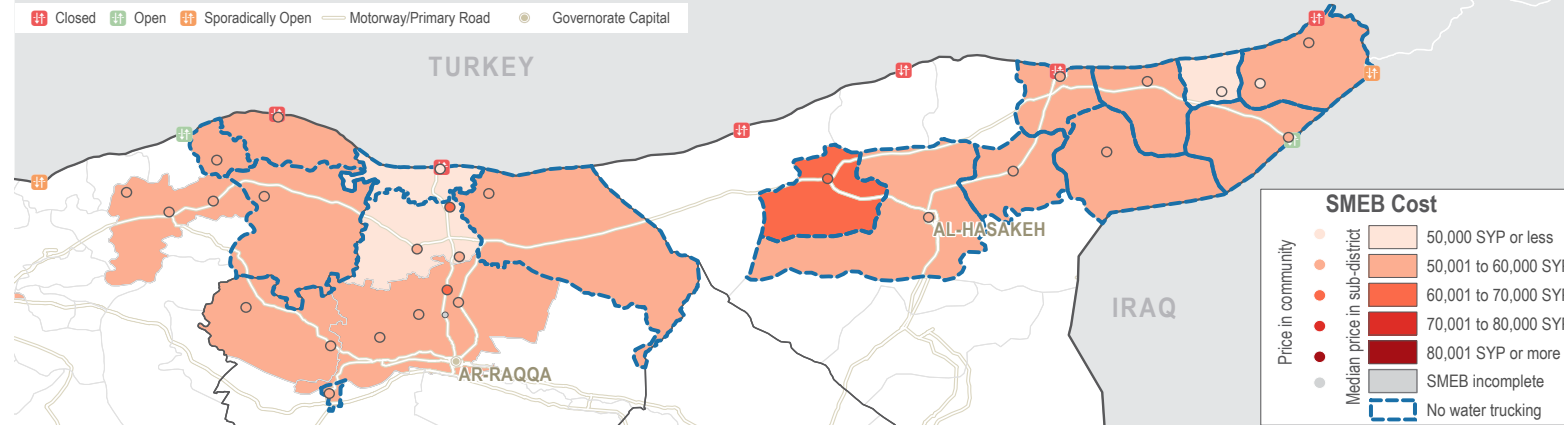
In Al-Hasakeh governorate, local authorities have opened a bakery capable of producing 10 tons of bread per day. Median bread prices for Al-Hasakeh have remained stable, possibly due to this, with other sub-districts varying in

median price change, up to 60%. In contrast, in Ya'robiyah the price of bread has increased by 233%.

SMEB food costs diverging

While the median sub-district cost of SMEB food items converged between December 2017 and March 2018, prices have been diverging again since April 2018.

MEDIAN SMEB COST RANGES (SYP), BY SUB-DISTRICT



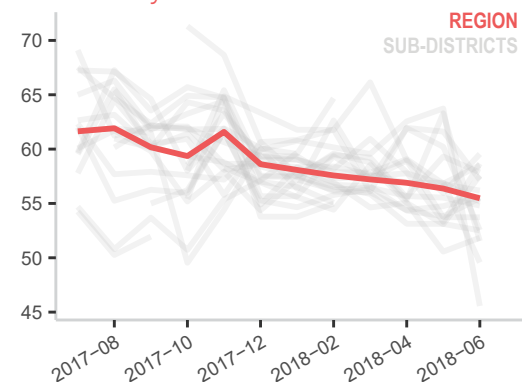
SUB-DISTRICTS WITH INCOMPLETE SMEBS IN JUNE

SUB-DISTRICT	MISSING ITEMS
Tell Tamer	Water
Sairn	Water, Kerosene
Lower Shyookh	Water, Kerosene

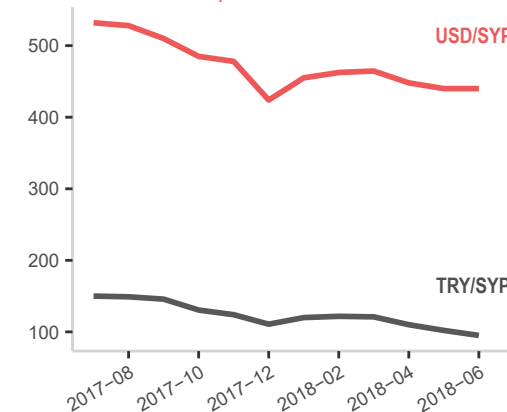
Note: A lack of data for a SMEB item does not imply a shortage

MEDIAN SMEB COSTS SANS WATER, BY MONTH

Thousand Syrian Pounds



EXCHANGE RATES, BY MONTH & CURRENCY



MEDIAN SMEB COSTS & CHANGES

Syrian Pounds

Sub-district	SMEB	One month change	Six month change
Northeast Syria Complete	59,618	+4.2%	-5.3%
Northeast Syria Non-Water Trucking	55,474	-1.6%	-4.5%
Ain al Arab	57,752	-0.4%	-2.2%
Al-Hasakeh*	57,851	-2.5%	+0.5%
Al-Malikeyyeh*	52,542	-12.7%	-6.8%
Al-Thawrah*	55,604	+1.6%	NA
Ar-Raqqa	61,483	+5.3%	-4.2%
Be'r Al-Hulo Al-Wardeyyeh*	51,538	-18.6%	-10.3%
Ein Issa	62,914	+2.8%	-4.4%
Jawadiyah*	45,564	-28.5%	-25.0%
Jurneyyeh*	52,515	-1.1%	NA
Lower Shyookh	NA	NA	NA
Menbij	55,084	+2.6%	-10.7%
Qahtaniyyeh*	57,165	-7.2%	-6.0%
Quamishli*	53,729	0.0%	-3.5%
Sarin	NA	NA	NA
Suluk*	55,158	-3.1%	-5.5%
Tal Hmis*	56,185	-1.0%	-5.3%
Tal Tamer*	60,896	NA	NA
Tell Abiad*	49,564	-12.9%	-16.8%
Ya'robiyah*	58,668	+10.1%	-0.6%

* Denotes sub-districts where water trucking is not common, and therefore does not have water trucking prices in the SMEB cost

SMEB FOOD ITEMS

See Page 1, Syrian Pounds

Sub-district	SMEB Food Items	One month change	Six month change
Northeast Syria	41,055	-3.7%	-4.0%
Ain al Arab	40,095	-1.5%	-5.9%
Al-Hasakeh	44,153	-1.3%	+4.4%
Al-Malikeyyeh	37,827	-12.4%	-11.2%
Al-Thawrah	41,055	+0.2%	NA
Ar-Raqqa	43,764	+11.4%	-0.6%
Be'r Al-Hulo Al-Wardeyyeh	39,450	-19.4%	-7.7%
Ein Issa	44,443	+6.9%	+6.8%
Jawadiyah	34,495	-20.5%	-21.9%
Jurneyyeh	39,902	+1.7%	NA
Lower Shyookh	41,380	6.7%	+1.1%
Menbij	39,566	+2.5%	-10.5%
Qahtaniyyeh	38,727	-14.6%	-14.3%
Quamishli	39,683	-7.0%	-5.5%
Sarin	41,635	+3.0%	-0.7%
Suluk	42,024	-3.2%	-2.2%
Tal Hmis	42,710	-1.3%	-2.3%
Tal Tamer	48,163	-0.9%	NA
Tell Abiad	37,494	-15.2%	-13.0%
Ya'robiyah	45,625	+10.7%	+0.9%

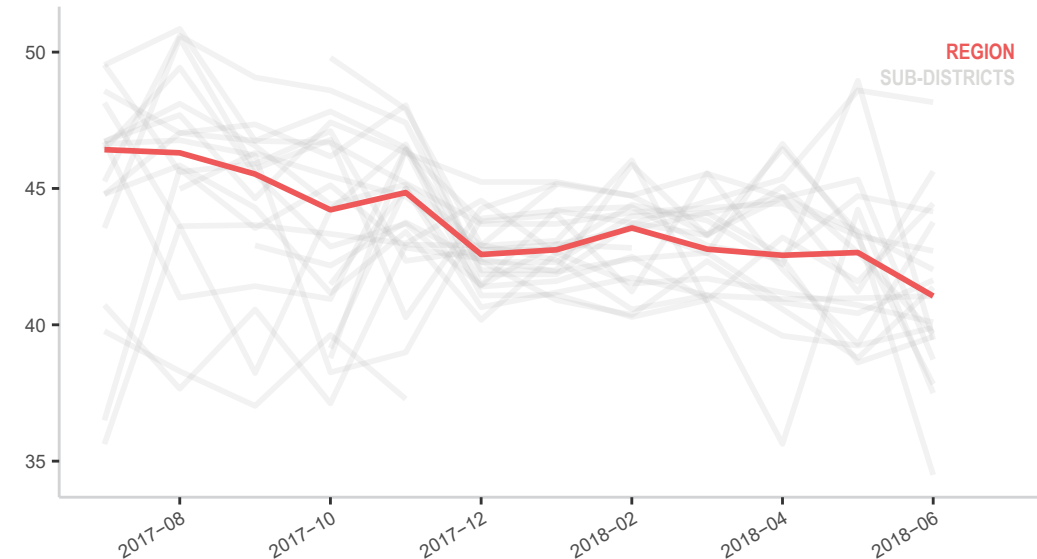
SMEB COOKING FUEL

Kerosene 25L, Syrian Pounds

Sub-district	SMEB Cooking Fuel	One month change	Six month change
Northeast Syria	2,500	-2.4%	-27.3%
Ain al Arab	2,500	-4.8%	-9.1%
Al-Hasakeh	2,500	-20.0%	-33.3%
Al-Malikeyyeh	3,750	-14.3%	-14.3%
Al-Thawrah	2,000	-27.3%	NA
Ar-Raqqa	2,500	0.0%	-27.3%
Be'r Al-Hulo Al-Wardeyyeh	2,750	+10.0%	-26.7%
Ein Issa	2,500	-20.0%	-50.0%
Jawadiyah	2,500	-50.0%	0.0%
Jurneyyeh	2,500	-20.0%	NA
Lower Shyookh	2,625	-4.5%	-4.5%
Menbij	2,750	+10.0%	+10.0%
Qahtaniyyeh	5,000	+233.3%	0.0%
Quamishli	3,438	+243.8%	+31.0%
Sarin	2,625	-4.5%	-4.5%
Suluk	2,500	0.0%	-30.4%
Tal Hmis	2,500	0.0%	-33.3%
Tal Tamer	2,500	NA	NA
Tell Abiad	2,500	0.0%	-50.0%
Ya'robiyah	2,000	+23.1%	-20.0%

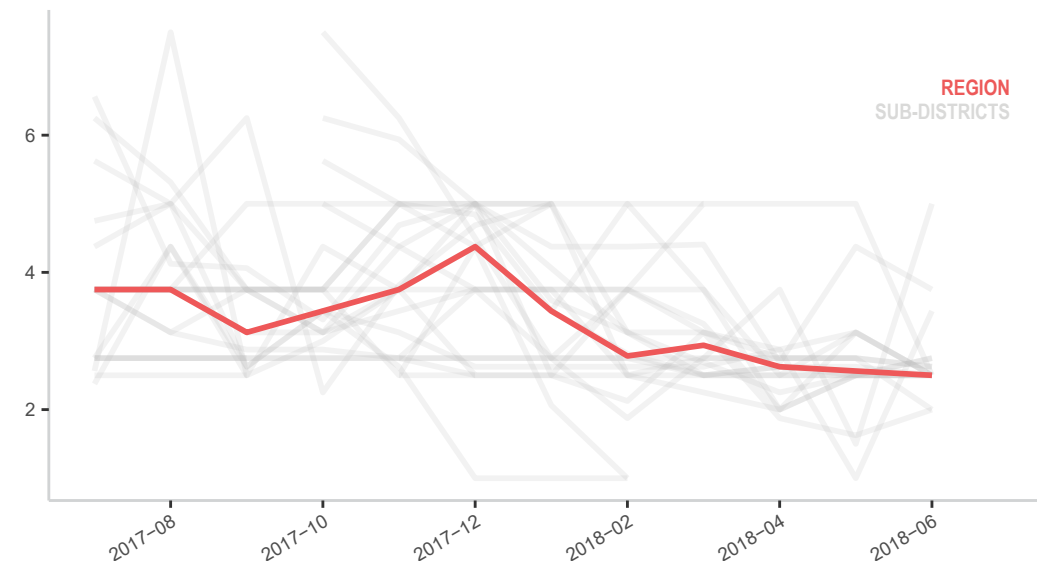
MEDIAN SMEB FOOD COSTS, BY MONTH

Thousand Syrian Pounds



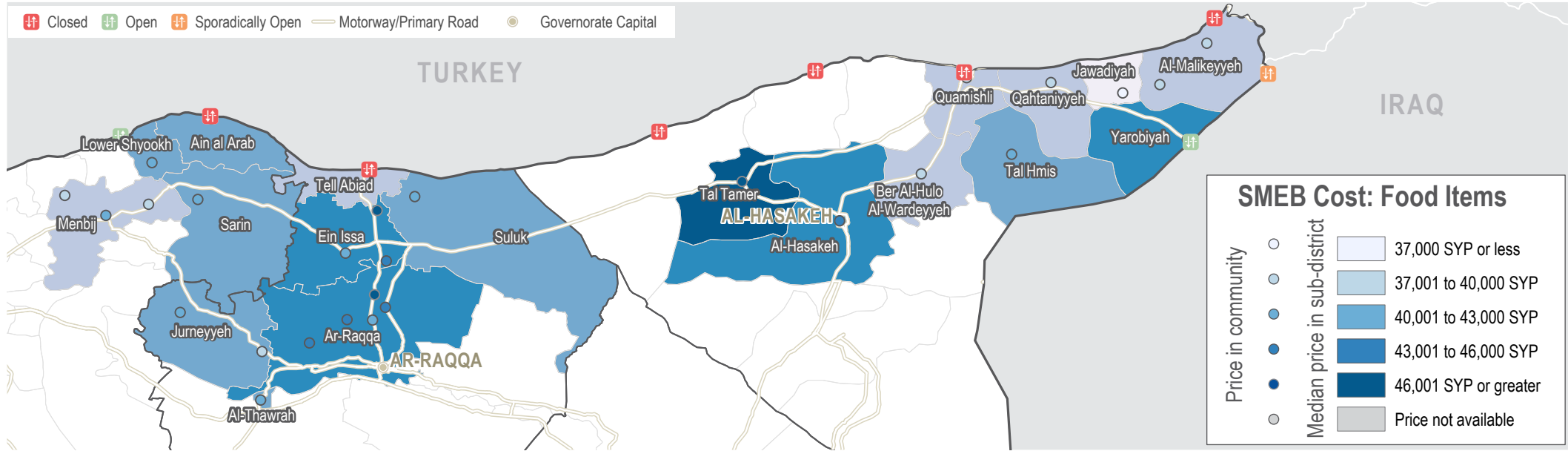
MEDIAN SMEB COOKING FUEL COSTS, BY MONTH

Thousand Syrian Pounds



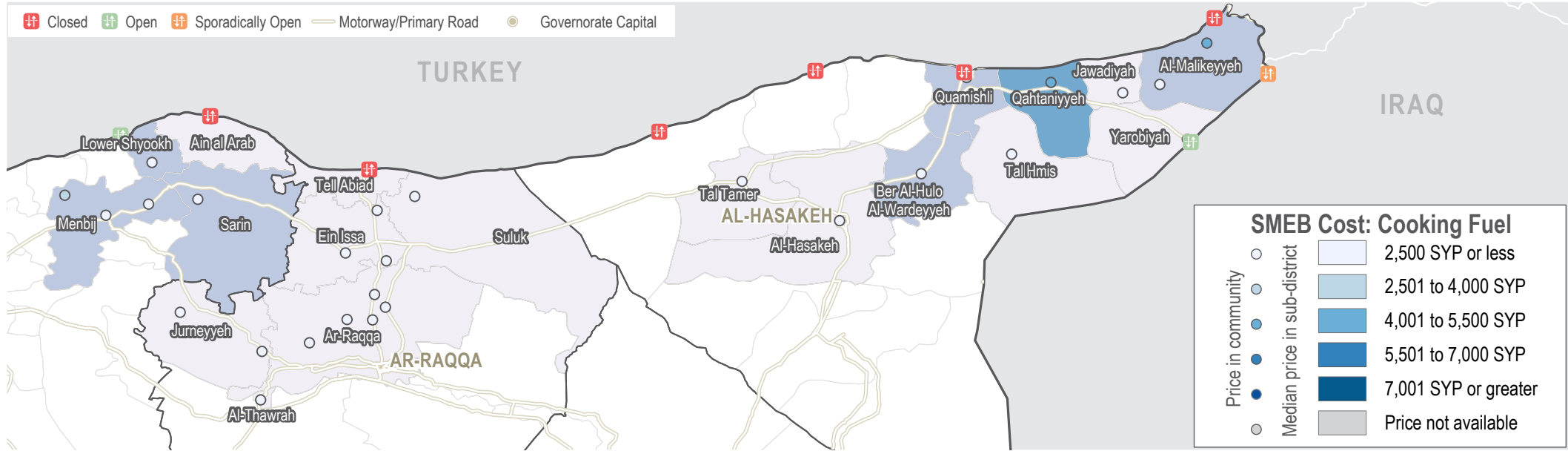
SMEB FOOD ITEMS

Sub-districts & communities, Syrian Pounds



SMEB COOKING FUEL

Sub-districts & Communities, Syrian Pounds



MEDIAN SMEB WATER TRUCKING

4,500L, Syrian Pounds

Sub-district	SMEB Water Truck	One month change	Six month change
Northeast Syria	2,880	+8.9%	+6.7%
Ain al Arab	2,745	+19.6%	+60.5%
Al-Hasakeh	NA	NA	NA
Al-Malikeyyeh	NA	NA	NA
Al-Thawrah	NA	NA	NA
Ar-Raqqa	1,800	-20.0%	-20.0%
Be'r Al-Hulo Al-Wardeyyeh	NA	NA	NA
Ein Issa	4,095	+1.1%	-35.0%
Jawadiyah	NA	NA	NA
Jumeyyeh	NA	NA	NA
Lower Shyookh	NA	NA	NA
Menbij	3,015	+4.7%	-4.3%
Qahtaniyyeh	NA	NA	NA
Quamishli	NA	NA	NA
Sarin	NA	NA	NA
Suluk	NA	NA	NA
Tal Hmis	NA	NA	NA
Tal Tamer	NA	NA </td <td>NA</td>	NA
Tell Abiad	NA	NA	NA
Ya'robiyah	NA	NA	NA

MEDIAN TRANSPORT FUEL PRICE

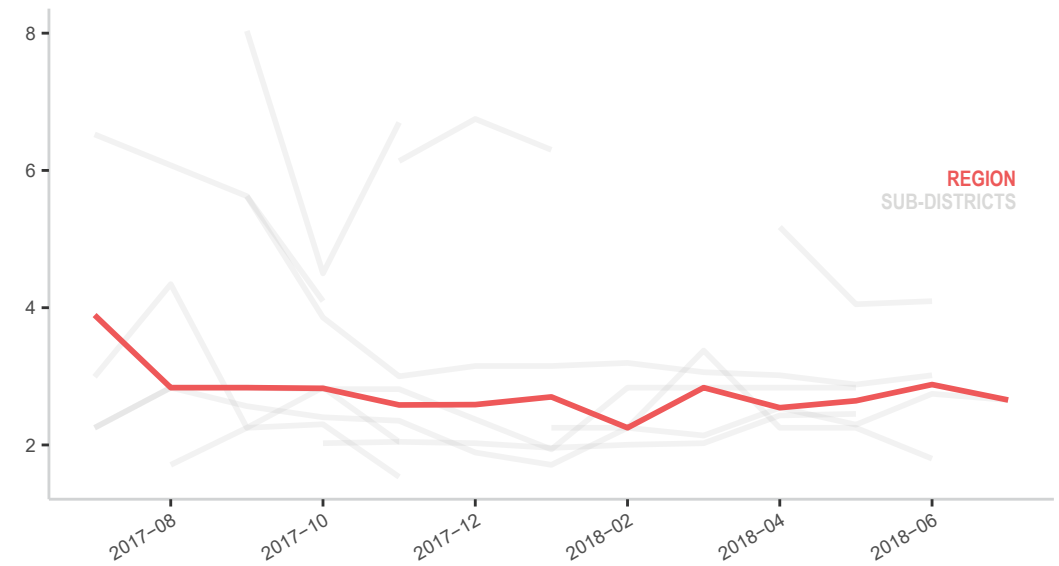
Diesel and Petrol 1L (Government of Syria and Manually Refined), Syrian Pounds

Sub-district	Diesel and Petrol	One month change	Six month change
Northeast Syria	145	NA	+45.0%
Ain al Arab	173	+1.6%	+1.6%
Al-Hasakeh	88	0.0%	-15.9%
Al-Malikeyyeh	146	+9.3%	+49.5%
Al-Thawrah	153	+8.9%	NA
Ar-Raqqa	164	+45.6%	-4.7%
Be'r Al-Hulo Al-Wardeyyeh	103	+17.0%	-1.6%
Ein Issa	126	+4.1%	-14.4%
Jawadiyah	140	-14.5%	+67.2%
Jumeyyeh	145	-14.7%	NA
Lower Shyookh	65	6.6%	+6.6%
Menbij	197	-10.8%	+220.3%
Qahtaniyyeh	134	-17.7%	+158.9%
Quamishli	187	+93.1%	+224.6%
Sarin	65	+6.6%	+6.6%
Suluk	268	130.6%	+82.6%
Tal Hmis	125	+41.0%	+28.9%
Tal Tamer	150	NA	NA
Tell Abiad	256	+83.0%	+57.7%
Ya'robiyah	125	+18.7%	+29.3%

* Denotes sub-districts where water trucking is not common, and therefore does not have water trucking prices

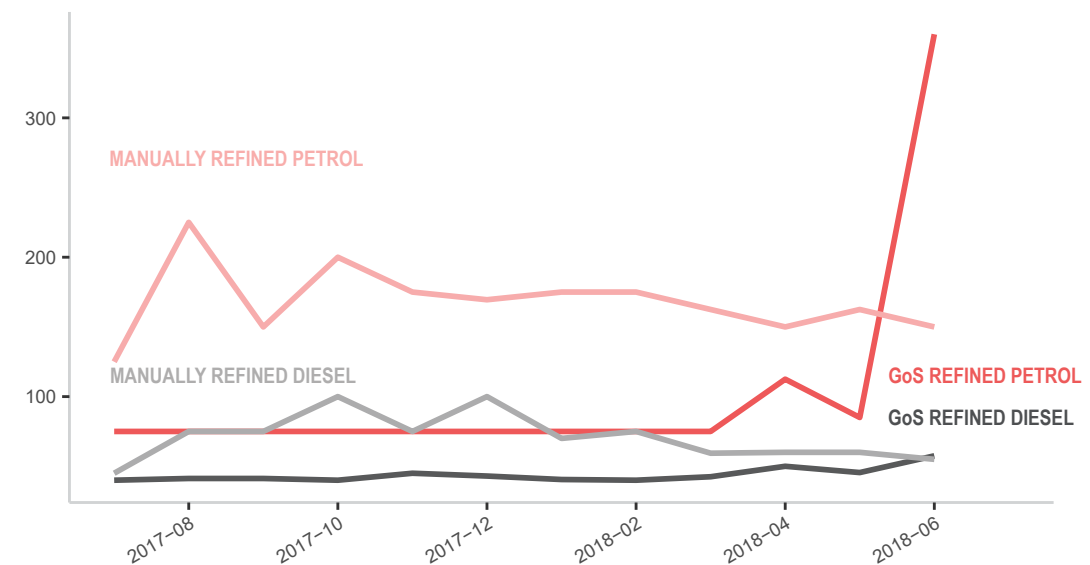
MEDIAN SMEB WATER TRUCKING COSTS, BY MONTH

Thousand Syrian Pounds



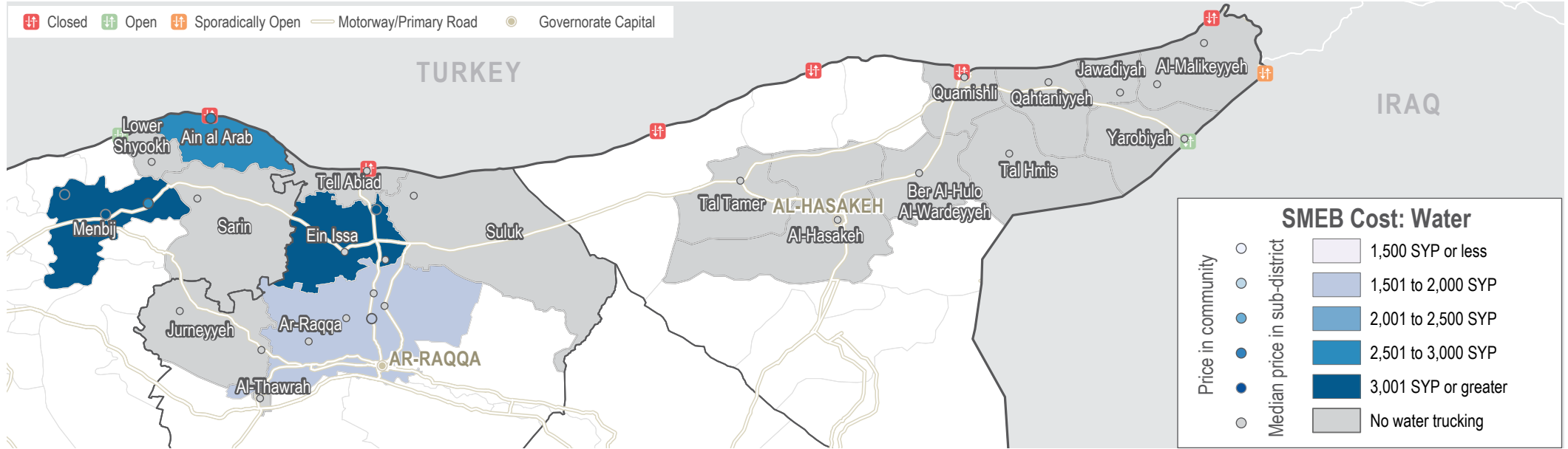
TRANSPORT FUEL COSTS, BY MONTH & TYPE

Thousand Syrian Pounds



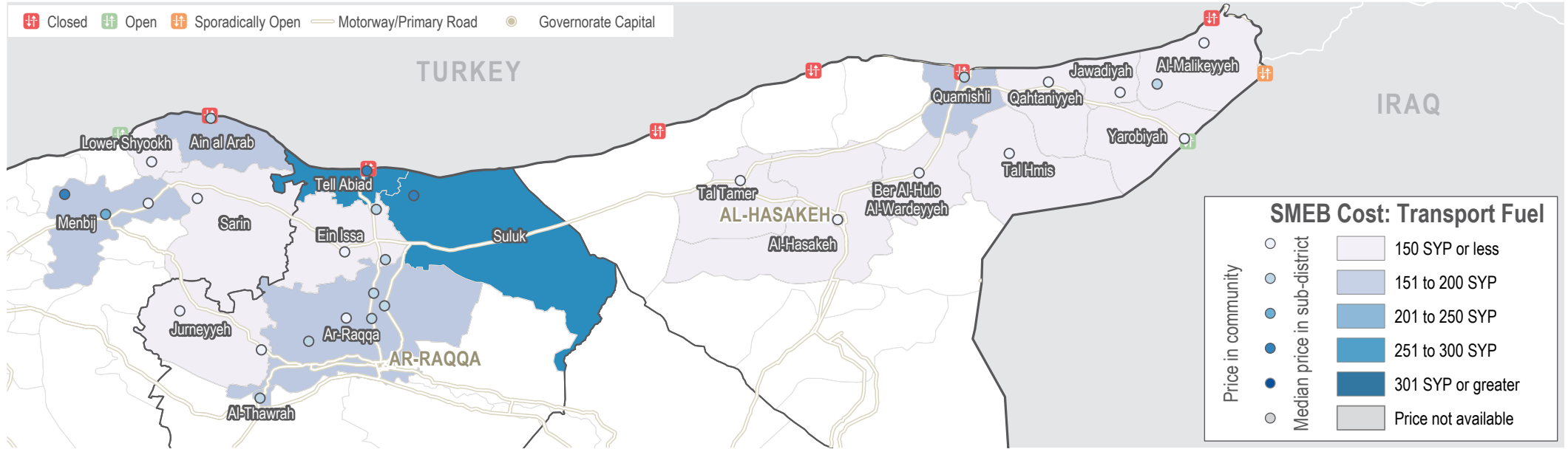
SMEB WATER TRUCKING

Sub-districts & communities, Syrian Pounds



TRANSPORT FUEL

Sub-districts & communities, Syrian Pounds



MEDIAN SMEB HYGIENE ITEMS

12 bars soap, 4 packs of 10 sanitary pads, 200g toothpaste, Syrian Pounds

Sub-district	SMEB Hygiene items	One month change	Six month change
Northeast Median	5,213	+1.2%	+3.0%
Ain al Arab	5,608	+5.6%	+12.3%
Al-Hasakeh	5,213	-2.1%	-4.9%
Al-Malikeyyeh	4,300	-21.2%	+1.3%
Al-Thawrah	4,670	+26.0%	NA
Ar-Raqqa	5,741	-11.4%	+4.4%
Be'r Al-Hulo Al-Wardeyyeh	4,543	-16.3%	-11.8%
Ein Issa	5,488	+6.6%	+8.4%
Jawadiyah	4,390	-10.7%	-25.0%
Jurneyyeh	3,050	1.6%	NA
Lower Shyookh	6,344	27.9%	+20.8%
Menbij	3,427	+3.5%	-37.6%
Qahtaniyyeh	4,450	-19.0%	-9.6%
Quamishli	5,310	+1.4%	+9.4%
Sarin	5,344	+6.6%	+8.3%
Suluk	5,286	+0.7%	-2.5%
Tal Hmis	5,855	+1.7%	+7.3%
Tal Tamer	4,485	+1.2%	NA
Tell Abiad	4,611	-2.6%	-7.3%
Ya'robiyah	5,700	+10.7%	+6.0%

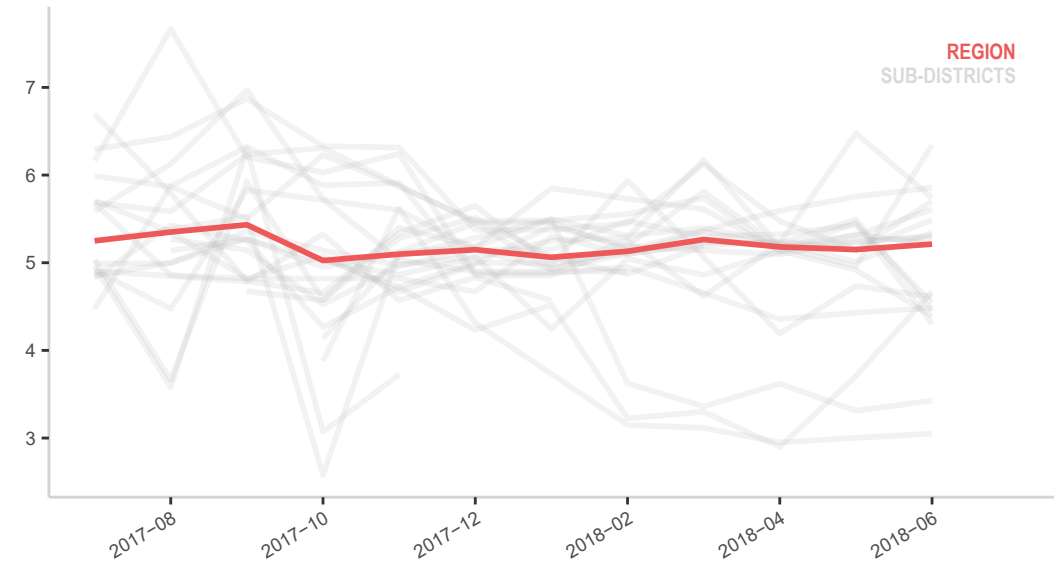
MEDIAN SMEB CELLPHONE DATA

1GB data, Syrian Pound

Sub-district	SMEB Phone Data	One month change	Six month change
Northeast Median	2,000	-27.4%	-13.0%
Ain al Arab	2,775	-7.5%	-2.6%
Al-Hasakeh	1,950	-2.5%	-2.5%
Al-Malikeyyeh	3,000	0.0%	+150.0%
Al-Thawrah	4,000	+14.3%	NA
Ar-Raqqa	3,389	-10.8%	-24.7%
Be'r Al-Hulo Al-Wardeyyeh	1,200	-40.0%	-33.3%
Ein Issa	2,000	-33.3%	-38.5%
Jawadiyah	1,000	-83.3%	-75.0%
Jurneyyeh	3,400	-16.0%	NA
Lower Shyookh	3,200	+10.3%	+14.3%
Menbij	2,483	-4.9%	+21.2%
Qahtaniyyeh	5,000	0.0%	+233.3%
Quamishli	1,550	+40.9%	-32.6%
Sarin	2,000	+6.7%	-54.5%
Suluk	1,500	-14.3%	-35.2%
Tal Hmis	1,200	-7.7%	-47.8%
Tal Tamer	1,500	NA	NA
Tell Abiad	1,500	0.0%	-36.0%
Ya'robiyah	1,250	-21.9%	-30.6%

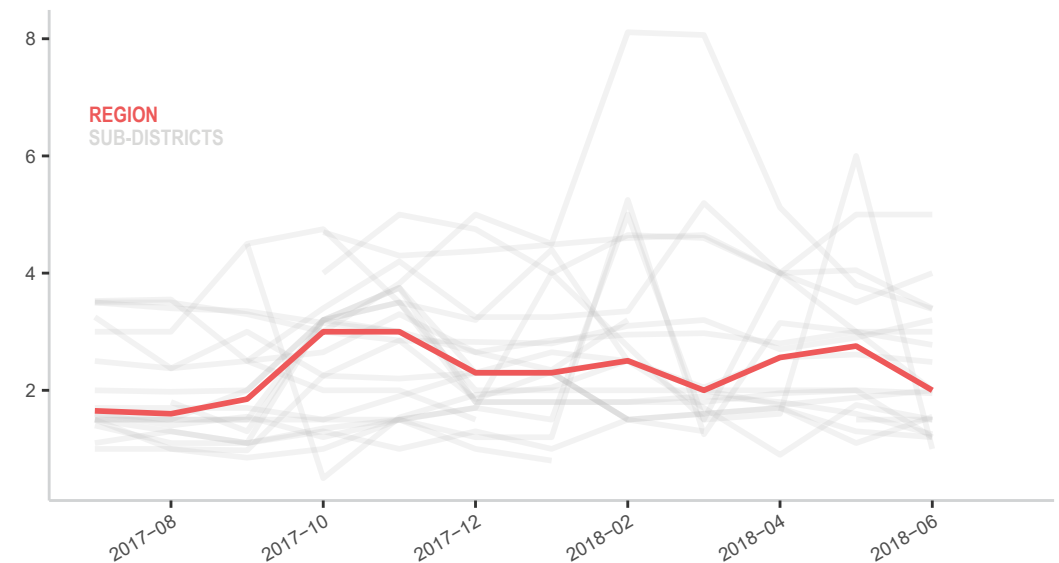
MEDIAN SMEB HYGIENE ITEMS COSTS, BY MONTH

Thousand Syrian Pounds



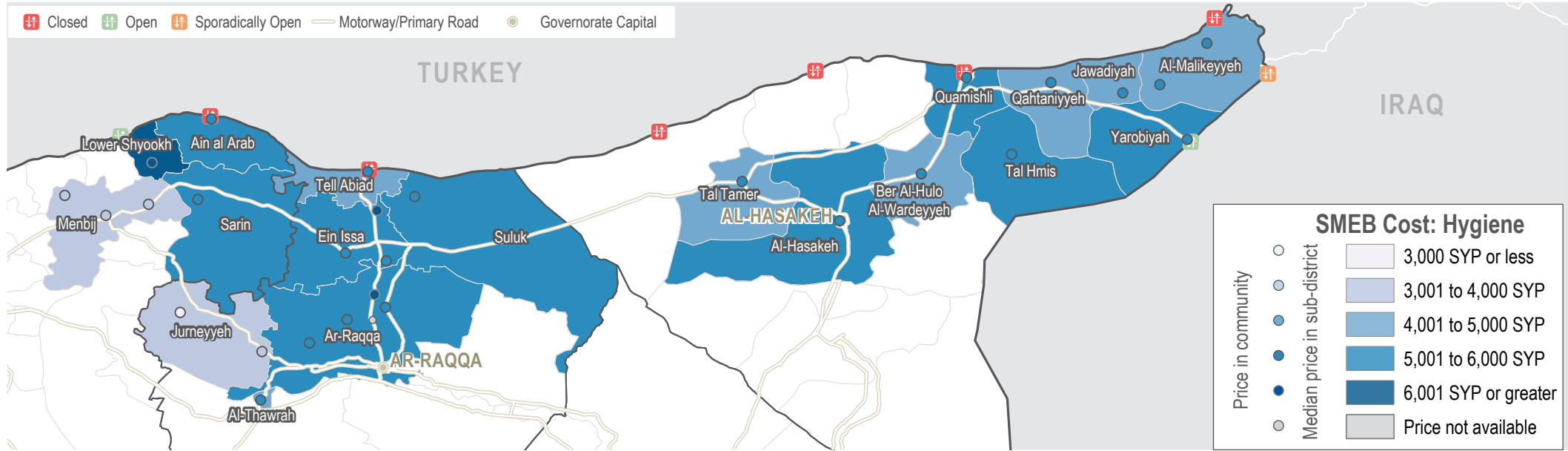
MEDIAN SMEB CELLPHONE DATA COSTS, BY MONTH

Thousand Syrian Pounds



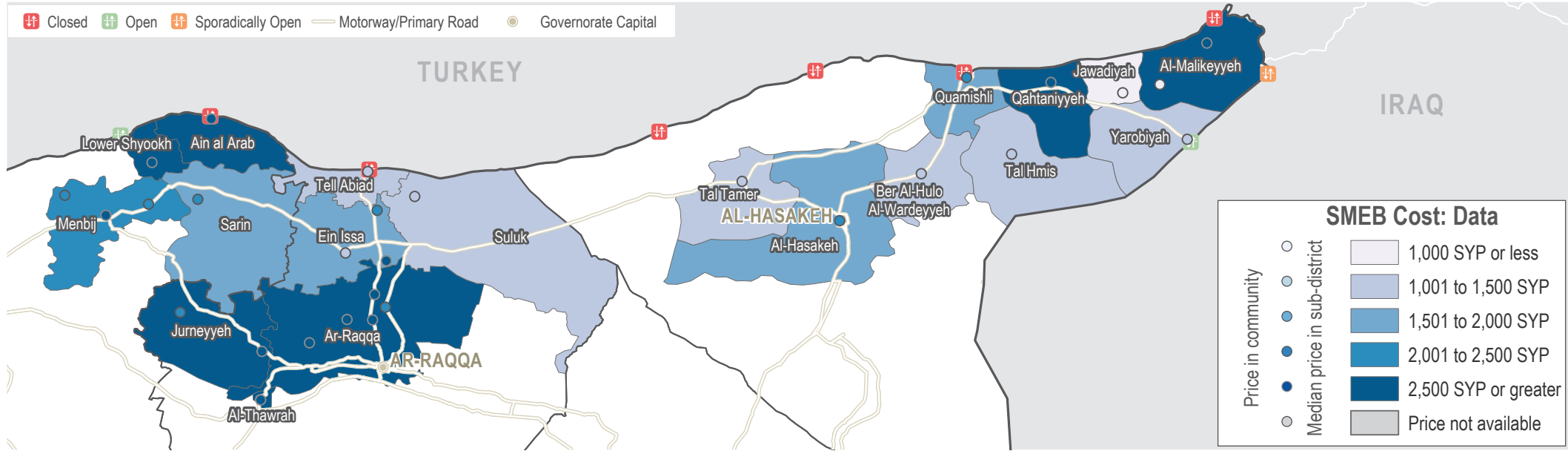
SMEB HYGIENE ITEMS

Sub-districts & Communities, Syrian Pounds



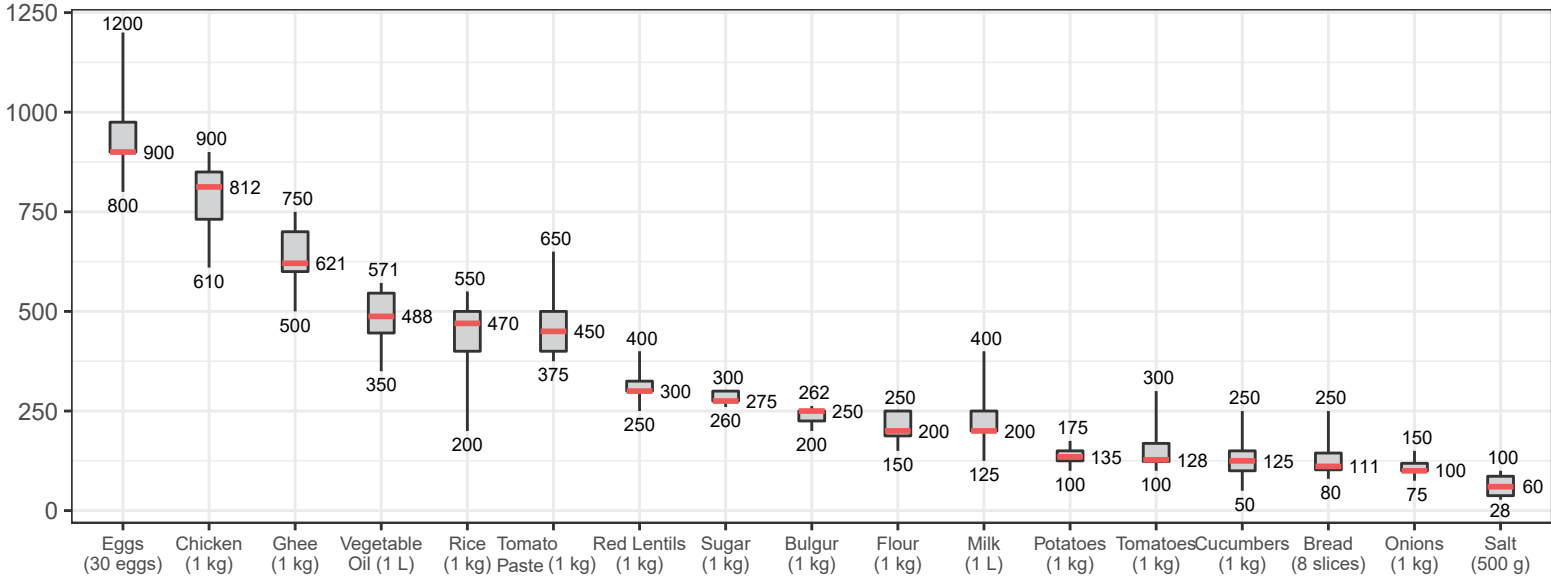
SMEB CELLPHONE DATA

Sub-districts & Communities, Syrian Pounds



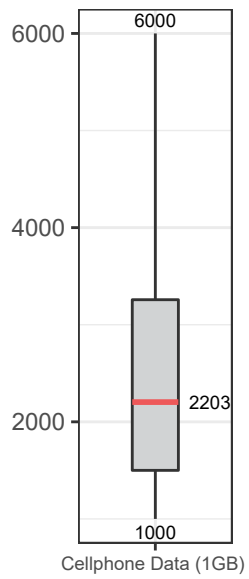
ASSESSED FOOD ITEMS

Syrian Pounds



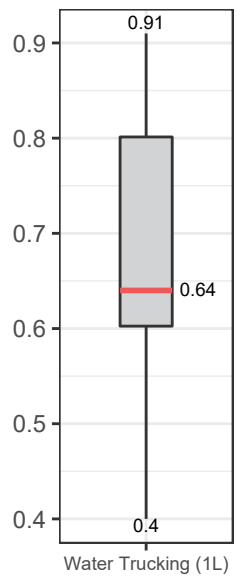
CELLPHONE DATA

1GB



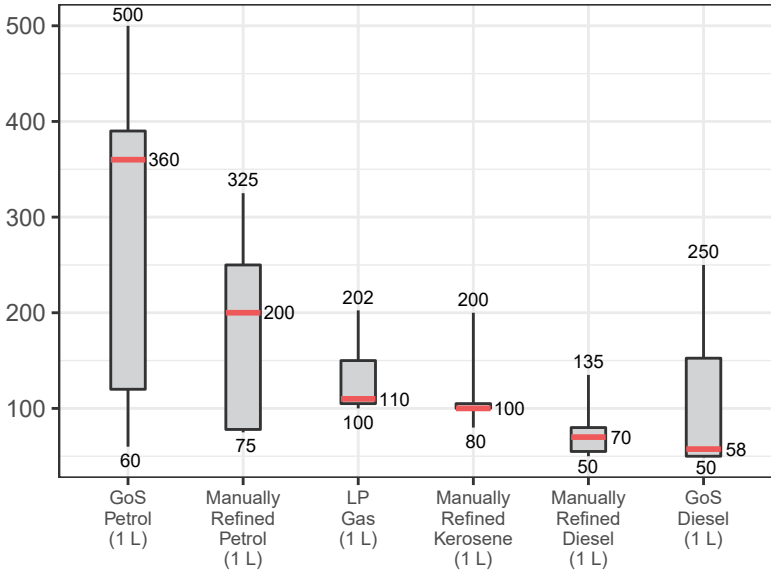
WATER TRUCKING

Syrian Pounds



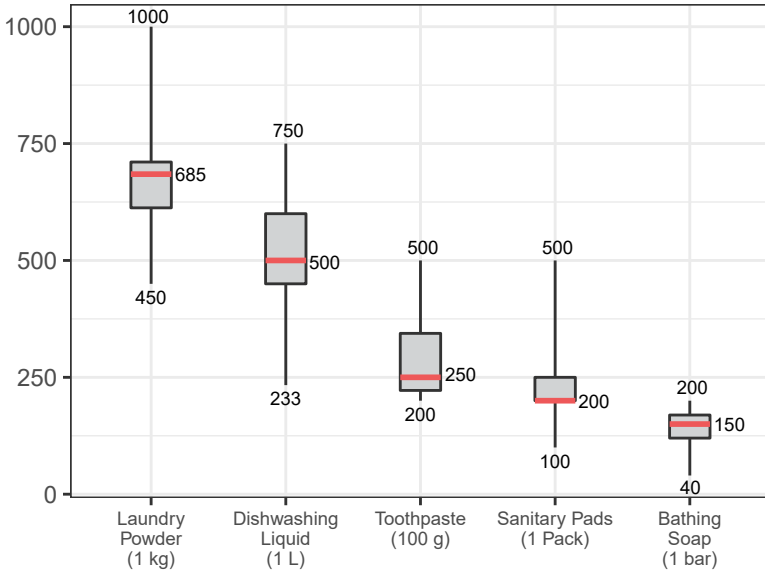
ASSESSED FUEL ITEMS

Syrian Pounds

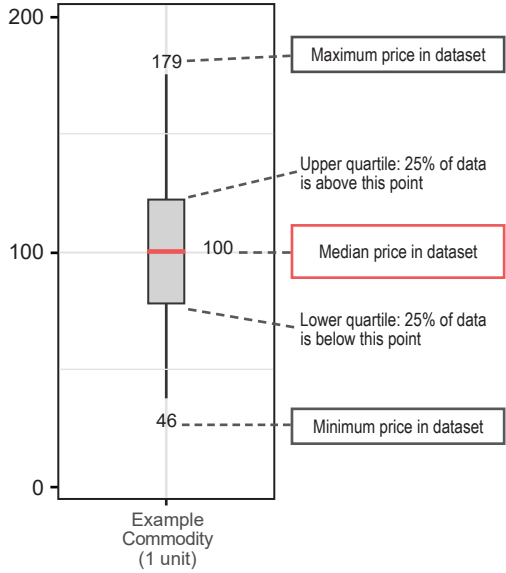


ASSESSED HYGIENE ITEMS

Syrian Pounds



READING BOXPLOTS



KEY DEVELOPMENTS

Median SMEB cost decreases

The median regional SMEB cost saw a slight decrease between May and June, decreasing by approximately 1,177 SYP (-1.8%). With the exception of Da'el and Mzeireb, all other sub-districts SMEB costs decreased or increased in value between -5% and 5%. However, over the coming months that is expected to change due to the south offensive currently taking place.

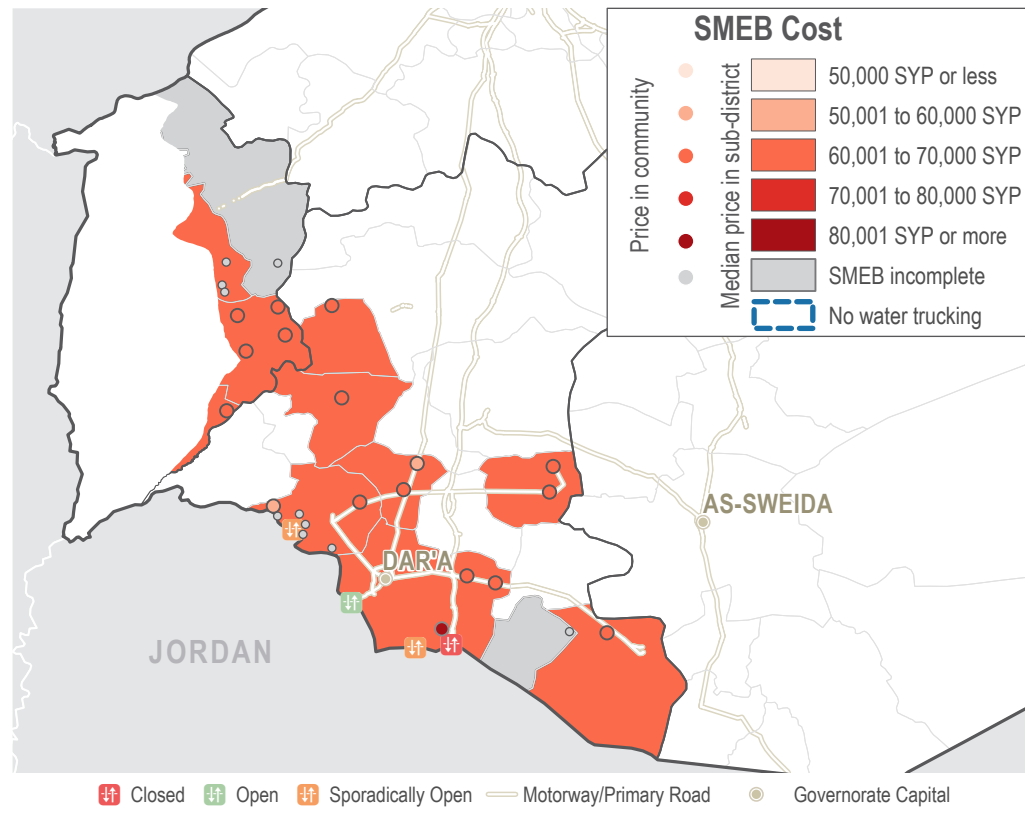
South cut from primary fuel routes

While the total SMEB has not shown a dramatic change (-1.8% decrease), fuel is often the first item to be affected by change and it is not included in the SMEB. Transport fuels have increased by an average of 27% since May 2018, fuel has been reported as being unavailable or having high prices in sub-districts including Quneitra, Izra' and Dar'a. In Izra', transport fuels have increased by 93% since May, 2018, with manually refined petrol increasing by 133%.

Coverage limitations

While information was able to be collected for June 2018 until 27th June, coverage is expected to be reduced due to access limitations and increasing safety and security concerns when collecting data. Data was unable to be collected from certain sub-districts, including Kherbet Ghazala and Fiq, where there were access limitations due to the south offensive.

COMPLETE SMEB COST RANGES (SYP), BY SUB-DISTRICT



SMEB COST & CHANGES

Sub-district	SMEB	One month change	Six month change
South Syria	64,588	-1.8%	-8.2%
Al-Khashniyyeh	66,342	-2.8%	-6.0%
Busra Esh-Sham	66,151	-2.3%	-7.7%
Da'el	60,004	-8.5%	-3.7%
Dar'a	65,847	-2.3%	-18.0%
Fiq	67,949	+3.3%	-6.2%
Hrak	67,413	-1.3%	-6.6%
Jasim	60,270	+4.4%	-7.1%
Jizeh	NA	NA	NA
Khan Arnaba	NA	NA	NA
Mzeireb	63,226	-8.0%	-9.1%
Nawa	63,329	+4.0%	-5.7%
Quneitra	62,933	-0.8%	-8.8%

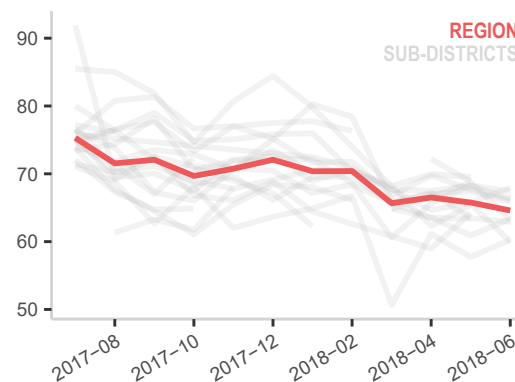
SUB-DISTRICTS WITH INCOMPLETE SMEBS IN JUNE

SUB-DISTRICT	MISSING ITEMS
Jizeh	Tomato paste, dishsoap
Khan Arnaba	Dishsoap

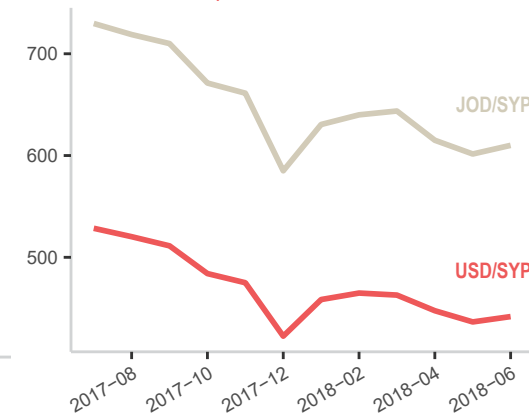
Note: A lack of data for a SMEB item does not imply a shortage

MEDIAN SMEB COSTS, BY MONTH

Thousand Syrian Pounds



EXCHANGE RATES, BY MONTH & CURRENCY



SMEB FOOD ITEMS

See Page 1, Syrian Pounds

Sub-district	SMEB Food Items	One month change	Six month change
South Syria	44,315	-2.6%	-5.8%
Al-Khashniyyeh	44,945	-3.9%	-2.2%
Busra Esh-Sham	44,000	-3.3%	-4.6%
Da'el	40,748	-7.4%	-1.0%
Dar'a	44,753	-5.6%	-19.4%
Fiq	47,640	+1.5%	-3.9%
Hrak	48,617	+2.0%	+1.7%
Jasim	37,825	-3.4%	-11.0%
Jizeh	NA	NA	NA
Khan Arnaba	43,500	+0.2%	-6.9%
Mzeireb	44,315	-12.0%	-6.4%
Nawa	44,852	+7.7%	-0.8%
Quneitra	42,388	-4.4%	-5.5%

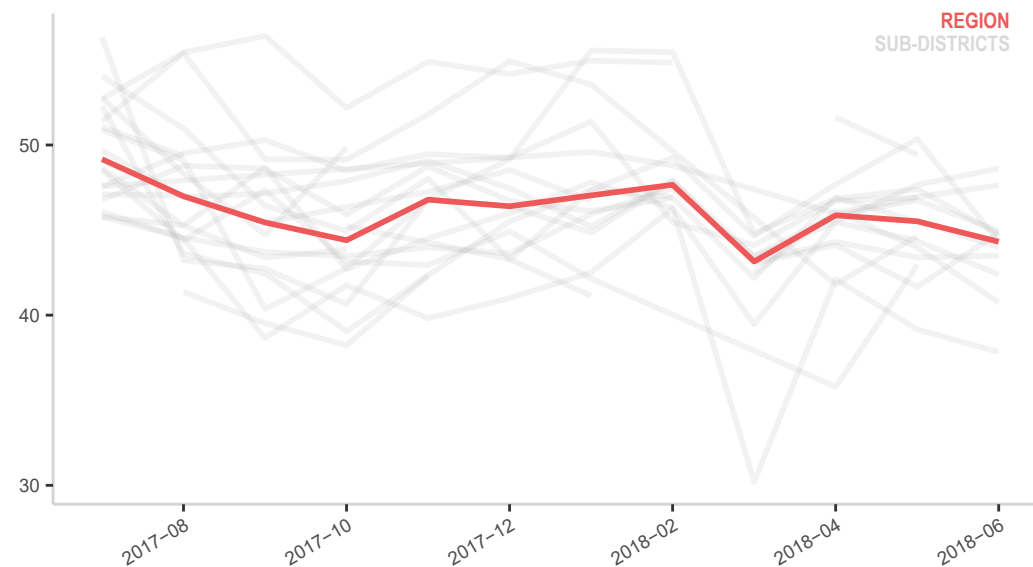
SMEB COOKING FUEL

LP Gas 25L, Syrian Pounds

Sub-district	SMEB Cooking Fuel	One month change	Six month change
South Syria	7,500	+15.4%	-19.5%
Al-Khashniyyeh	7,281	+7.1%	-22.3%
Busra Esh-Sham	7,500	+18.2%	-18.2%
Da'el	6,563	-1.9%	-23.6%
Dar'a	7,500	18.8%	-20.0%
Fiq	7,500	+9.1%	-20.0%
Hrak	5,516	-14.3%	-37.6%
Jasim	9,000	+44.0%	-2.7%
Jizeh	8,125	+25.0%	-15.6%
Khan Arnaba	NA	NA	NA
Mzeireb	7,000	+7.7%	-25.3%
Nawa	5,625	-10.9%	-38.4%
Quneitra	7,500	+13.2%	-20.5%

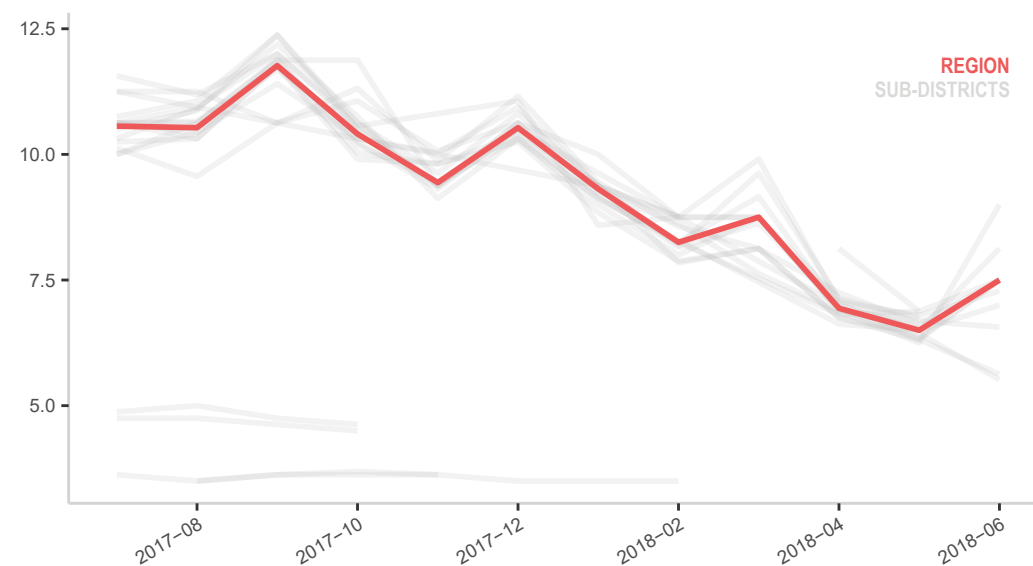
MEDIAN SMEB FOOD COSTS, BY MONTH

Thousand Syrian Pounds



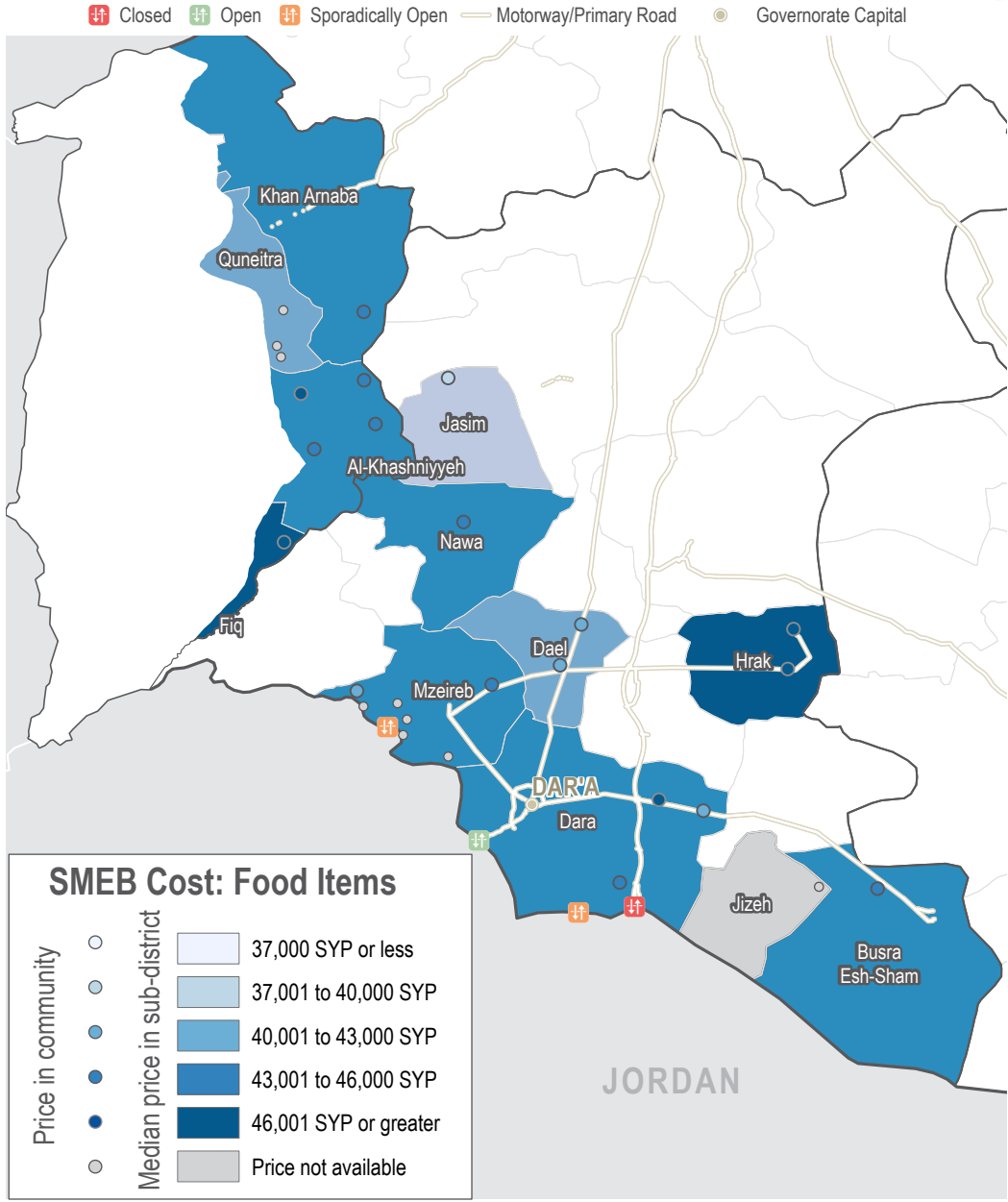
MEDIAN SMEB COOKING FUEL COSTS, BY MONTH

Thousand Syrian Pounds



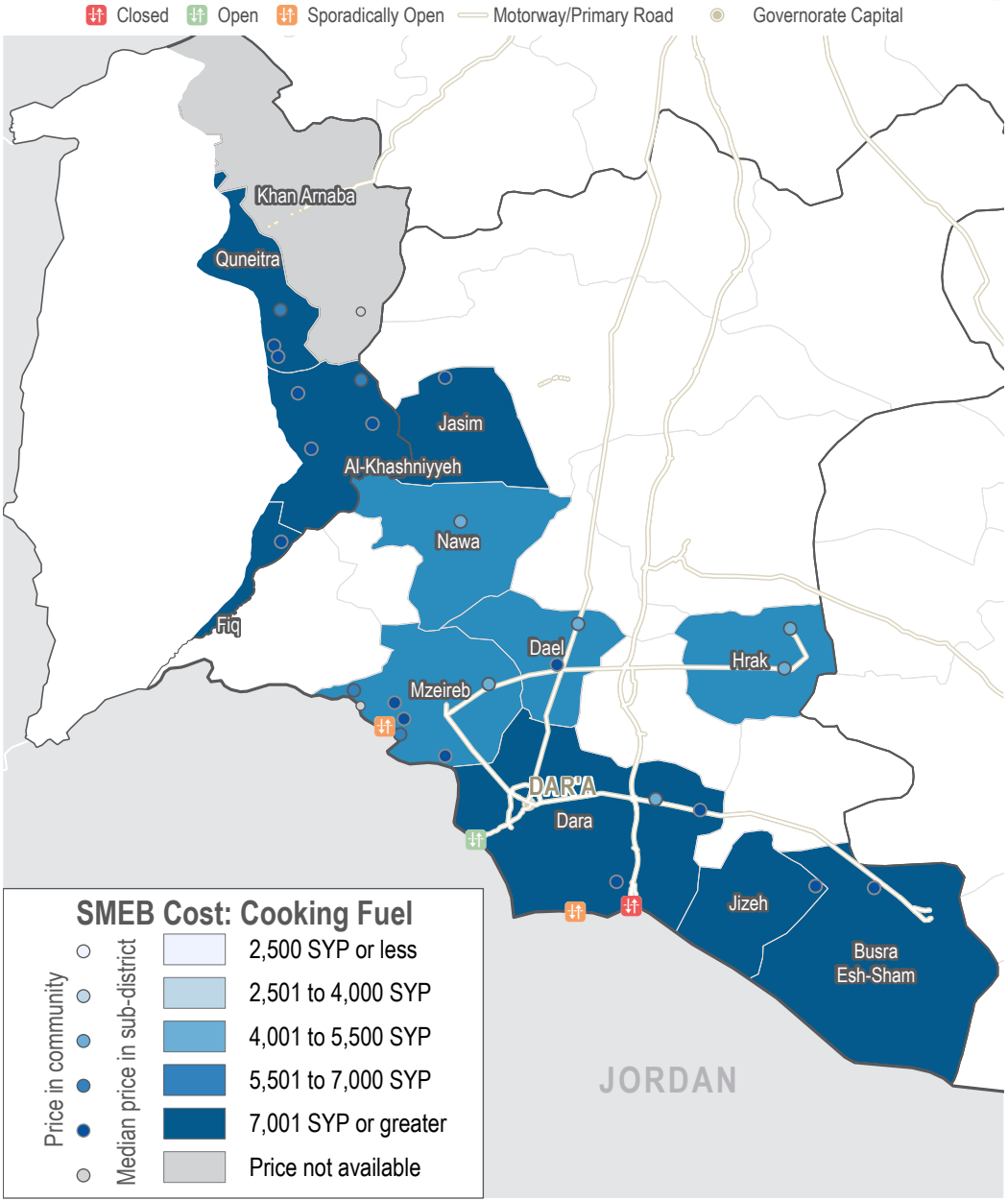
SMEB FOOD ITEMS

Sub-districts & communities, Syrian Pounds



SMEB COOKING FUEL

Sub-districts & Communities, Syrian Pounds



MEDIAN SMEB WATER TRUCKING

4,500L, Syrian Pounds

Sub-district	SMEB Water Truck	One month change	Six month change
South Syria	2,419	+8.6%	+3.7%
Al-Khashniyyeh	2,588	-1.3%	+1.3%
Busra Esh-Sham	2,813	+25.3%	+8.2%
Da'el	2,025	0.0%	+34.3%
Dar'a	2,813	+19.0%	+17.9%
Fiq	1,620	0.0%	-5.3%
Hrak	2,250	+1.0%	-23.1%
Jasim	2,070	+31.4%	-9.2%
Jizeh	3,281	+31.5%	-2.3%
Khan Arnaba	3,150	+55.6%	+50.5%
Mzeireb	1,890	+5.0%	+5.0%
Nawa	2,025	-8.5%	+0.6%
Quneitra	2,700	+17.6%	-11.8%

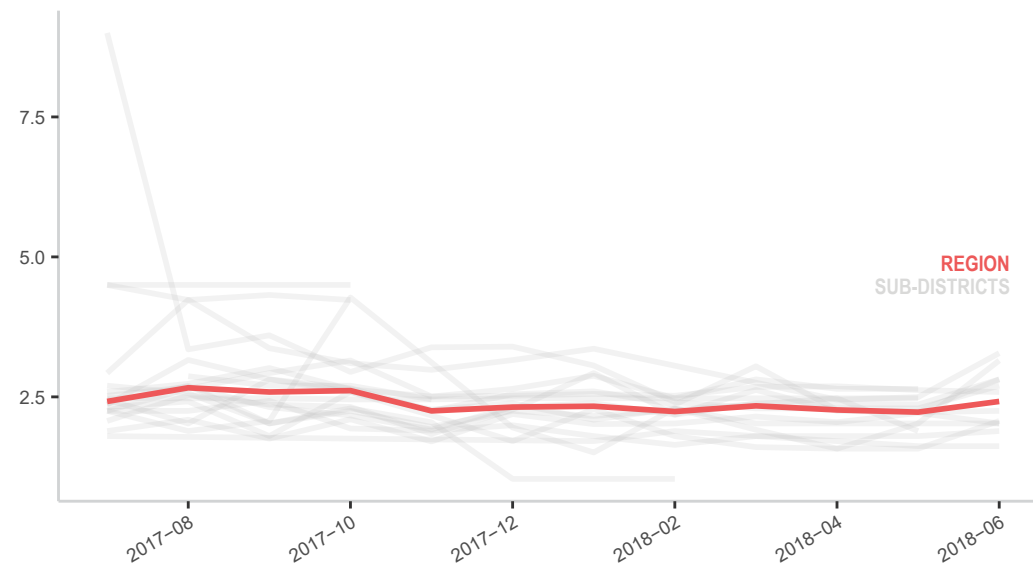
MEDIAN TRANSPORT FUEL PRICE

Diesel and Petrol 1L (Government of Syria and Manually Refined), Syrian Pounds

Sub-district	Diesel and Petrol	One month change	Six month change
South Syria	405	+28.4%	+11.7%
Al-Khashniyyeh	410	+30.2%	+14.2%
Busra Esh-Sham	375	+15.4%	+3.4%
Da'el	436	+42.2%	+17.1%
Dar'a	346	+14.5%	-3.5%
Fiq	388	+14.8%	+3.3%
Hrak	316	+1.6%	-10.6%
Jasim	600	+92.8%	+63.8%
Jizeh	475	+50.8%	+23.8%
Khan Arnaba	475	+38.9%	+28.4%
Mzeireb	431	+39.1%	+20.5%
Nawa	319	+4.7%	-8.9%
Quneitra	399	+22.9%	+5.3%

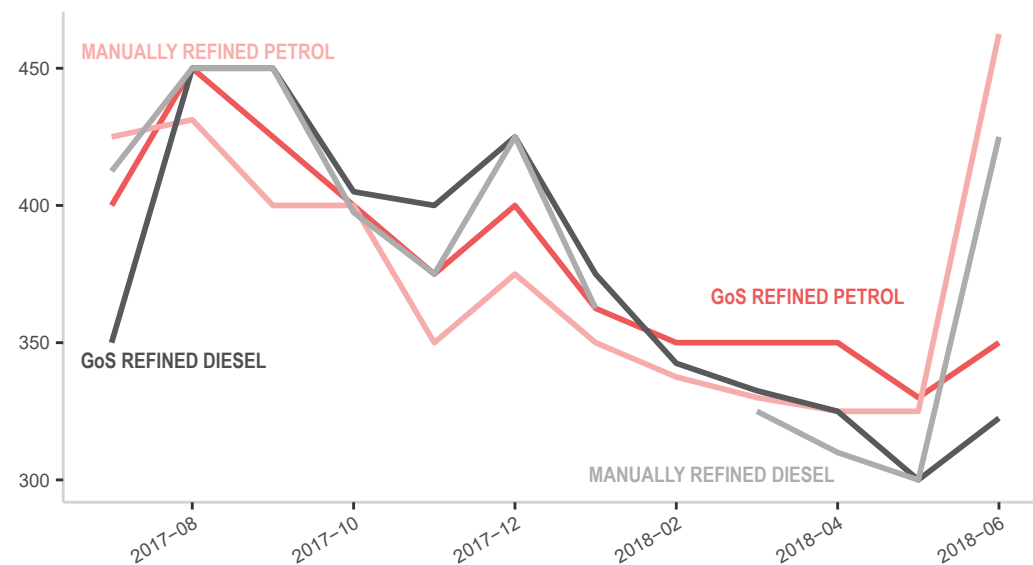
MEDIAN SMEB WATER TRUCKING COSTS, BY MONTH

Thousand Syrian Pounds



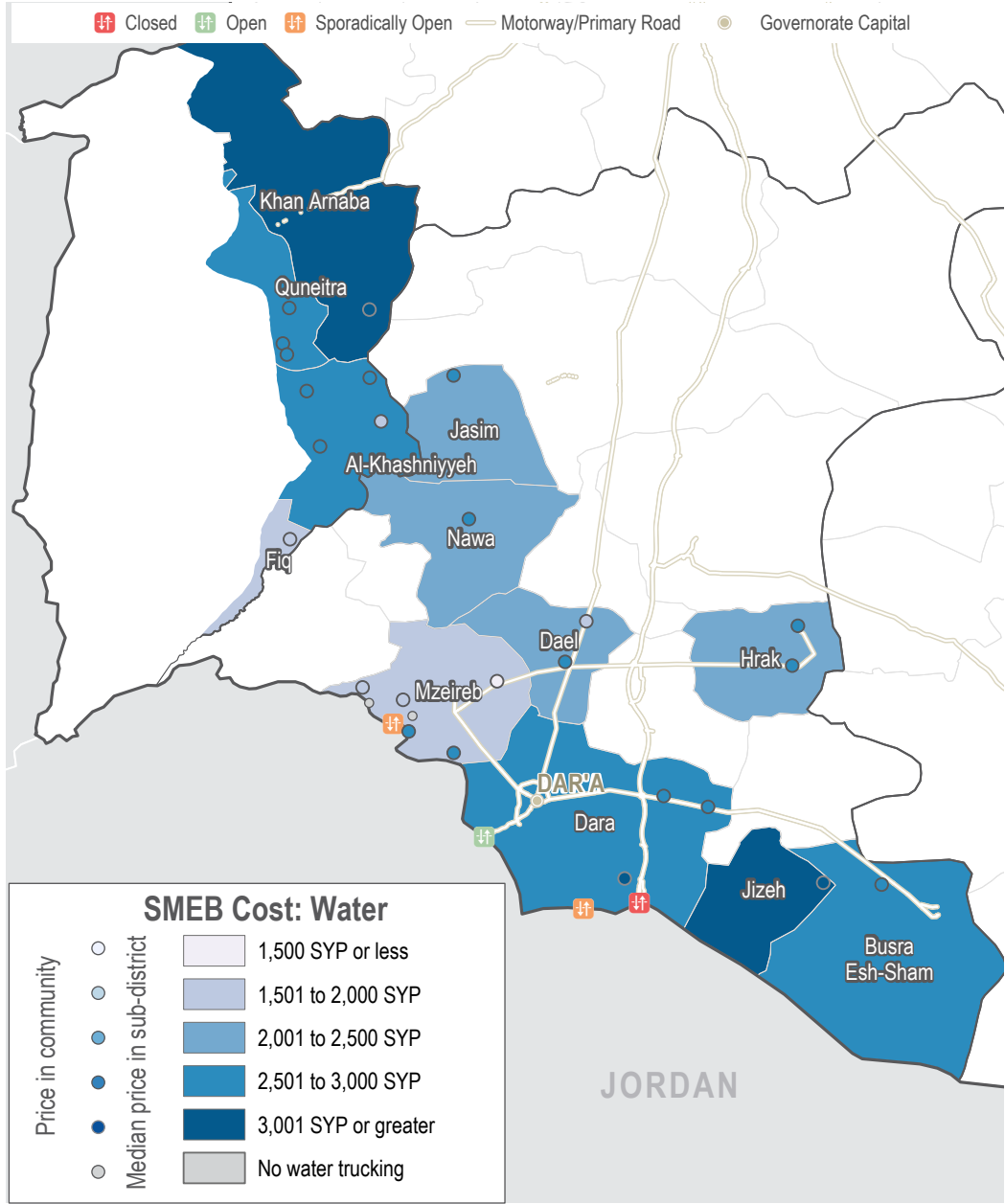
TRANSPORT FUEL COSTS, BY MONTH & TYPE

Thousand Syrian Pounds



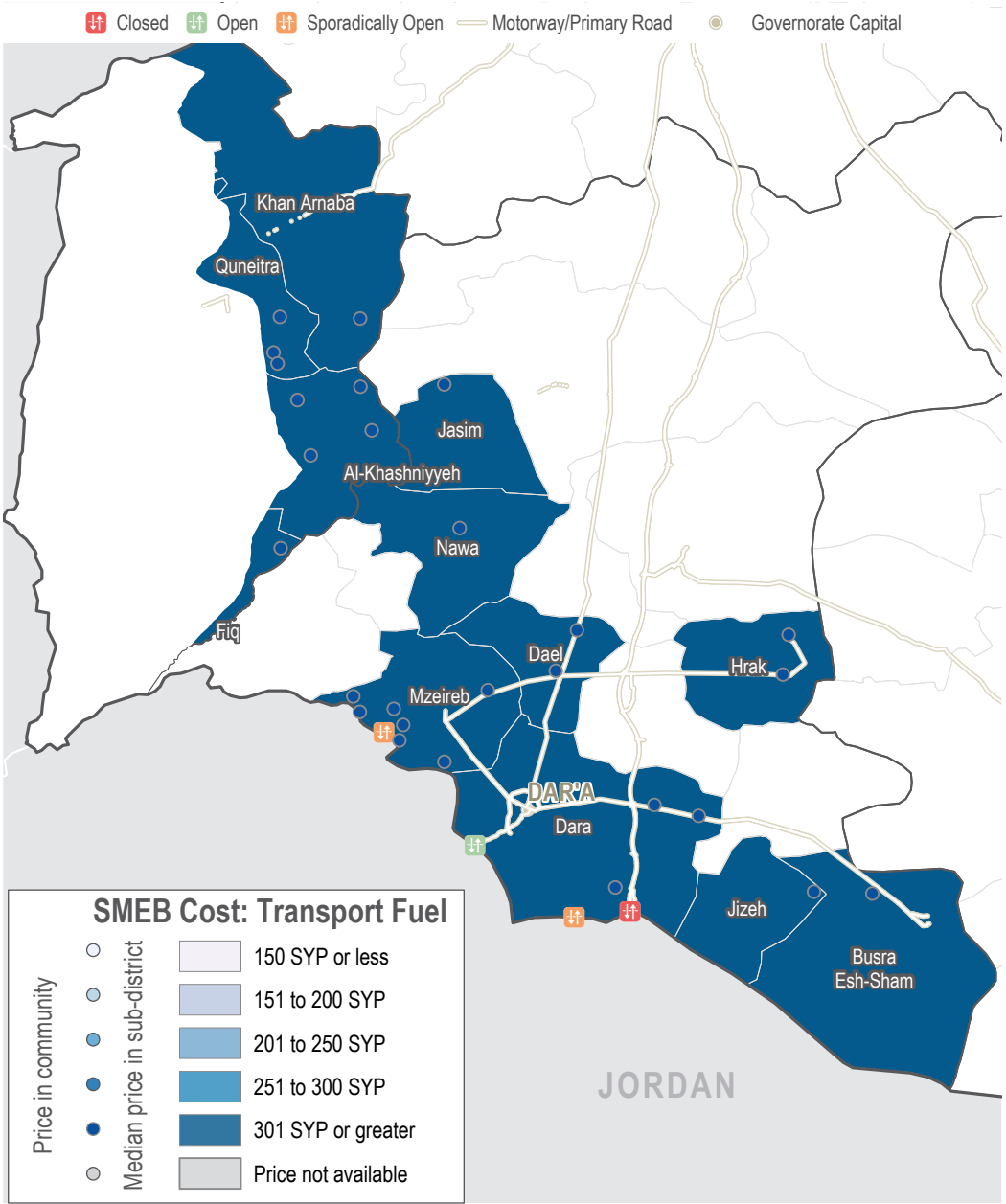
SMEB WATER TRUCKING

Sub-districts & communities, Syrian Pounds



TRANSPORT FUEL

Sub-districts & communities, Syrian Pounds



MEDIAN SMEB HYGIENE ITEMS

12 bars soap, 4 packs of 10 sanitary pads, 200g toothpaste, Syrian Pounds

Sub-district	S,MEB Hygiene items	One month change	Six month change
South Syria	4,710	-3.7%	-5.9%
Dar'a	5,200	-1.9%	-3.0%
Busra Esh-Sham	5,223	-8.7%	-5.2%
Da'el	4,733	-12.4%	-9.0%
Mzeireb	4,688	-3.1%	-17.0%
Jizeh	4,948	+16.7%	-5.2%
Jasim	4,279	-15.9%	-14.8%
Hrak	3,670	-7.4%	+6.8%
Nawa	6,293	+15.4%	+21.3%
Quneitra	4,583	+1.3%	+5.1%
Khan Arnaba	4,360	+1.5%	-9.9%
Al-Khashniyyeh	4,909	-0.9%	+6.1%
Fiq	4,455	+4.6%	+2.9%

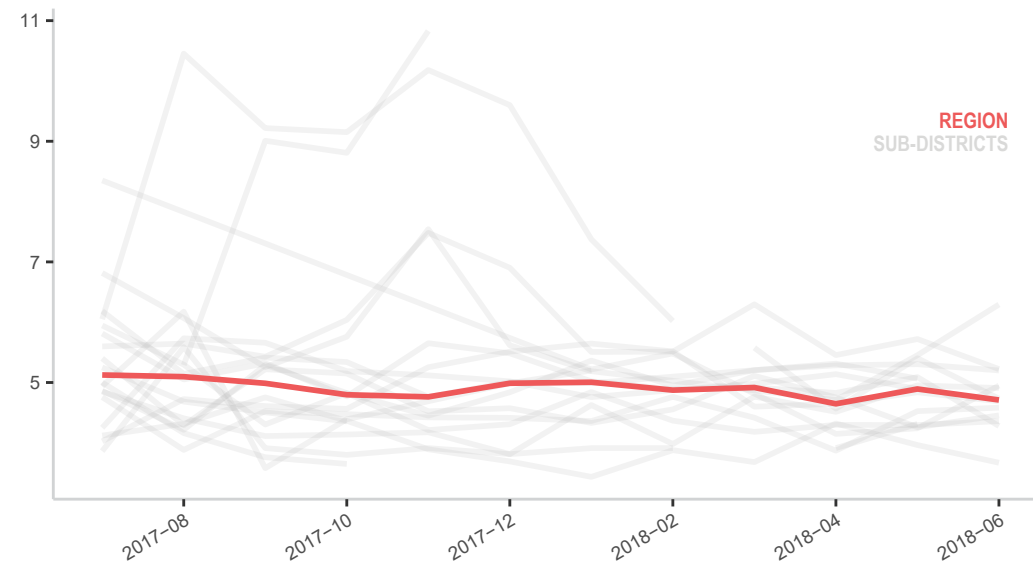
MEDIAN SMEB CELLPHONE DATA

1GB data, Syrian Pound

Sub-district	SMEB Phone Data	One month change	Six month change
South Syria	1,725	-13.8%	-29.4%
Dar'a	1,700	-15.0%	-28.8%
Busra Esh-Sham	2,000	-36.8%	-38.5%
Da'el	1,750	-39.7%	+16.7%
Mzeireb	1,500	-17.0%	-11.8%
Jizeh	1,500	0.0%	0.0%
Jasim	2,048	-3.1%	-20.0%
Hrak	3,500	+27.3%	+20.7%
Nawa	2,000	+14.3%	-20.0%
Quneitra	2,500	+11.1%	-9.1%
Khan Arnaba	1,250	+25.0%	-3.8%
Al-Khashniyyeh	1,500	-1.6%	-0.6%
Fiq	1,500	0.0%	-40.0%

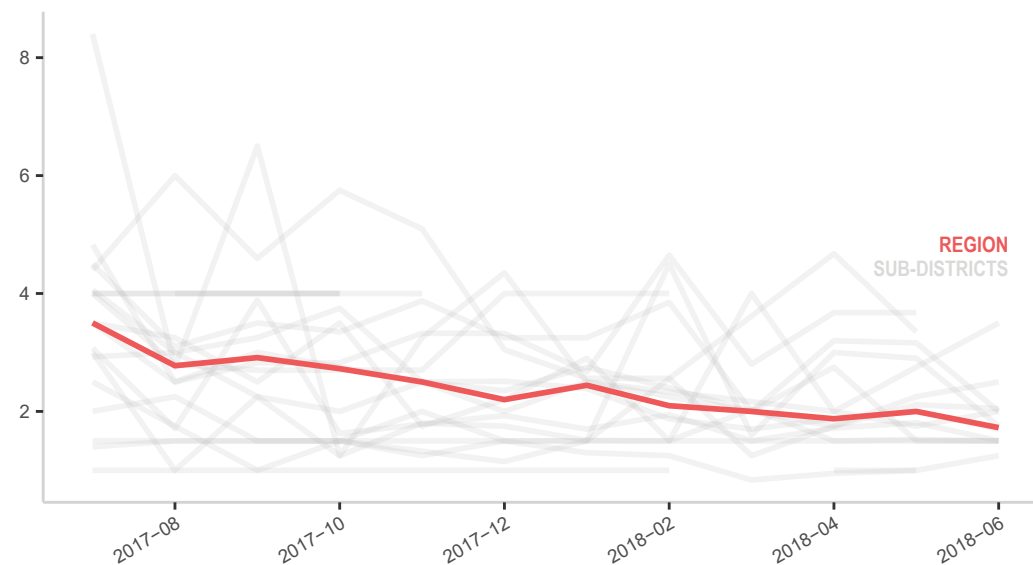
MEDIAN SMEB HYGIENE ITEMS COSTS, BY MONTH

Thousand Syrian Pounds



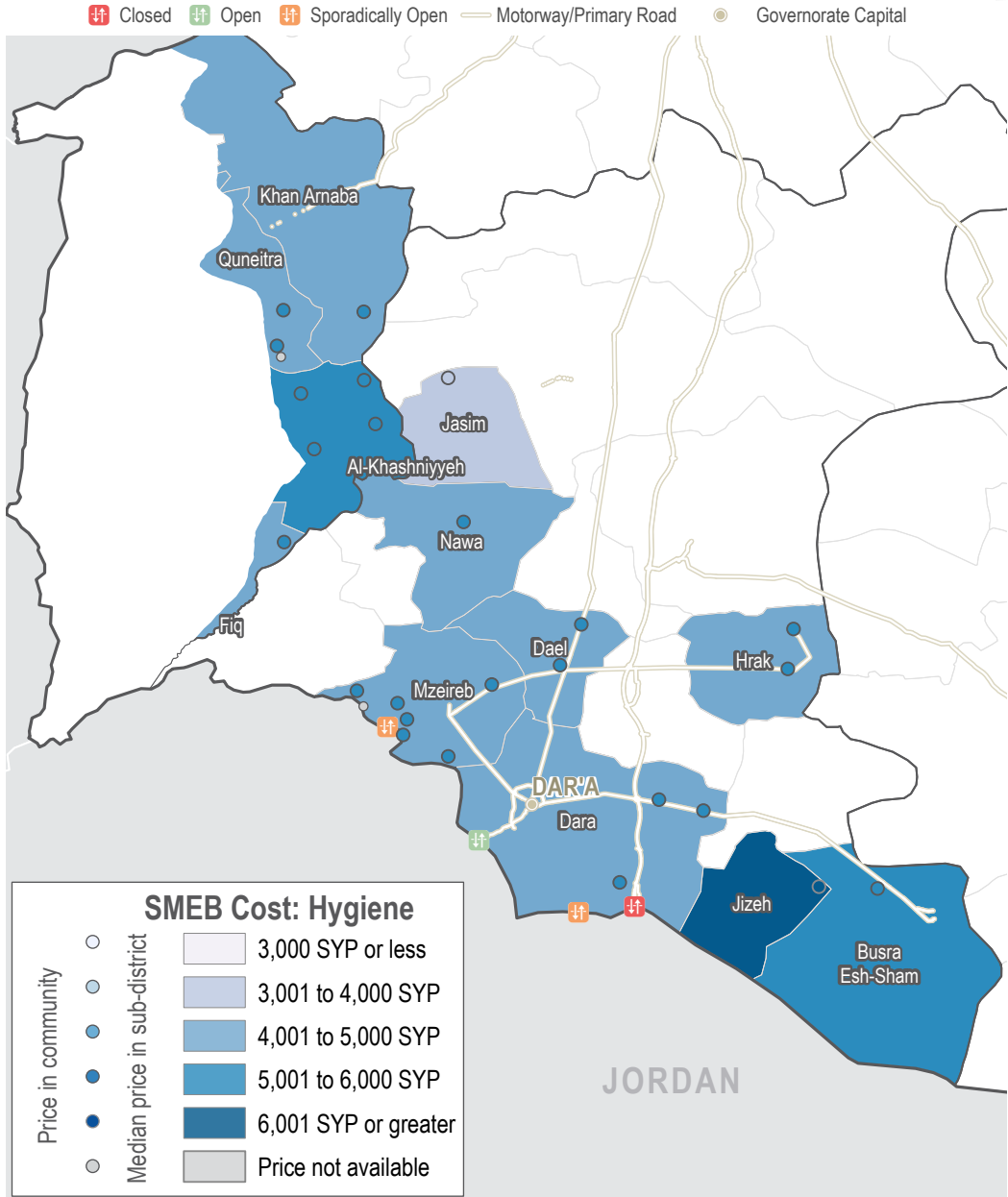
MEDIAN SMEB CELLPHONE DATA COSTS, BY MONTH

Thousand Syrian Pounds



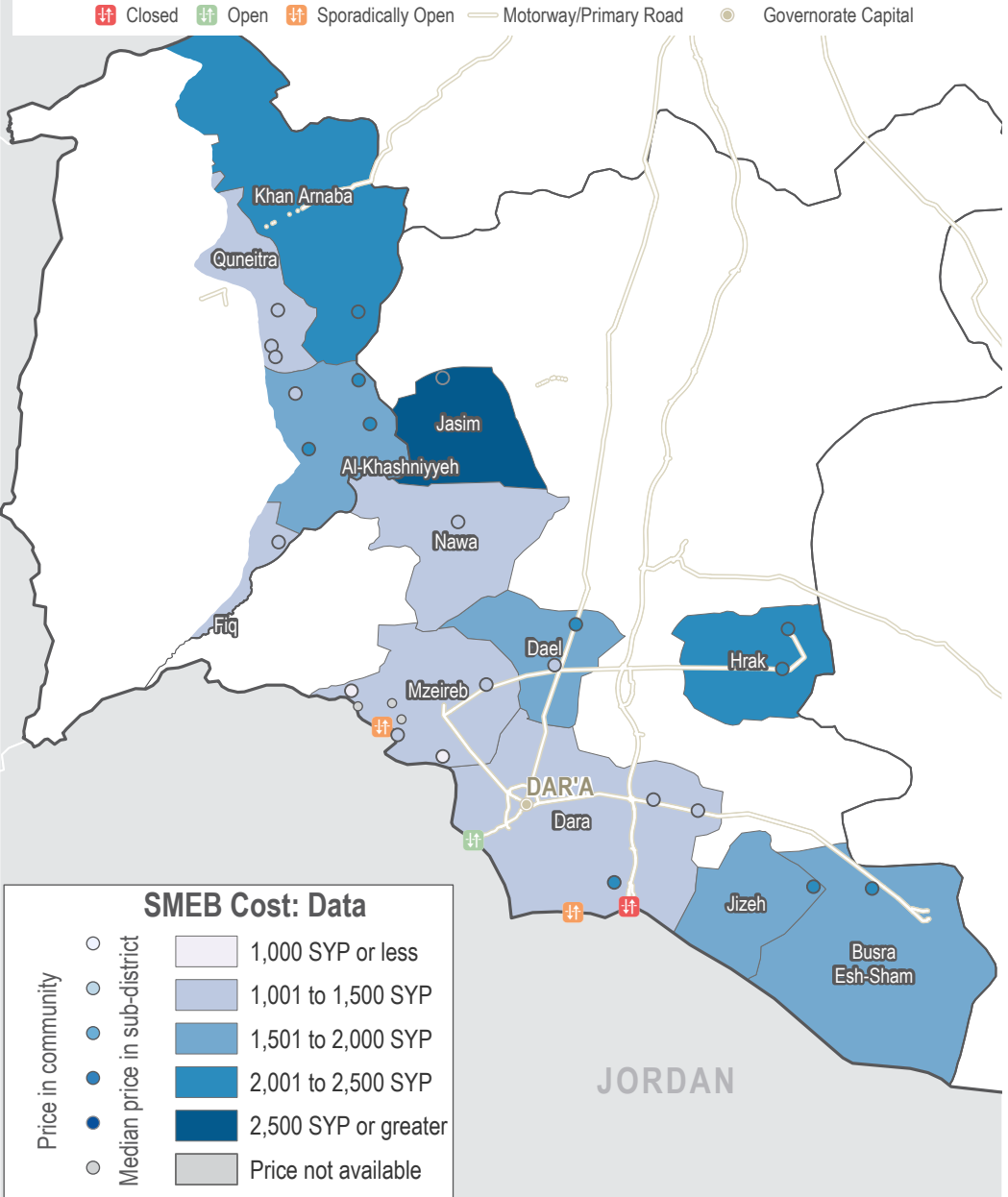
SMEB HYGIENE ITEMS

Sub-districts & Communities, Syrian Pounds



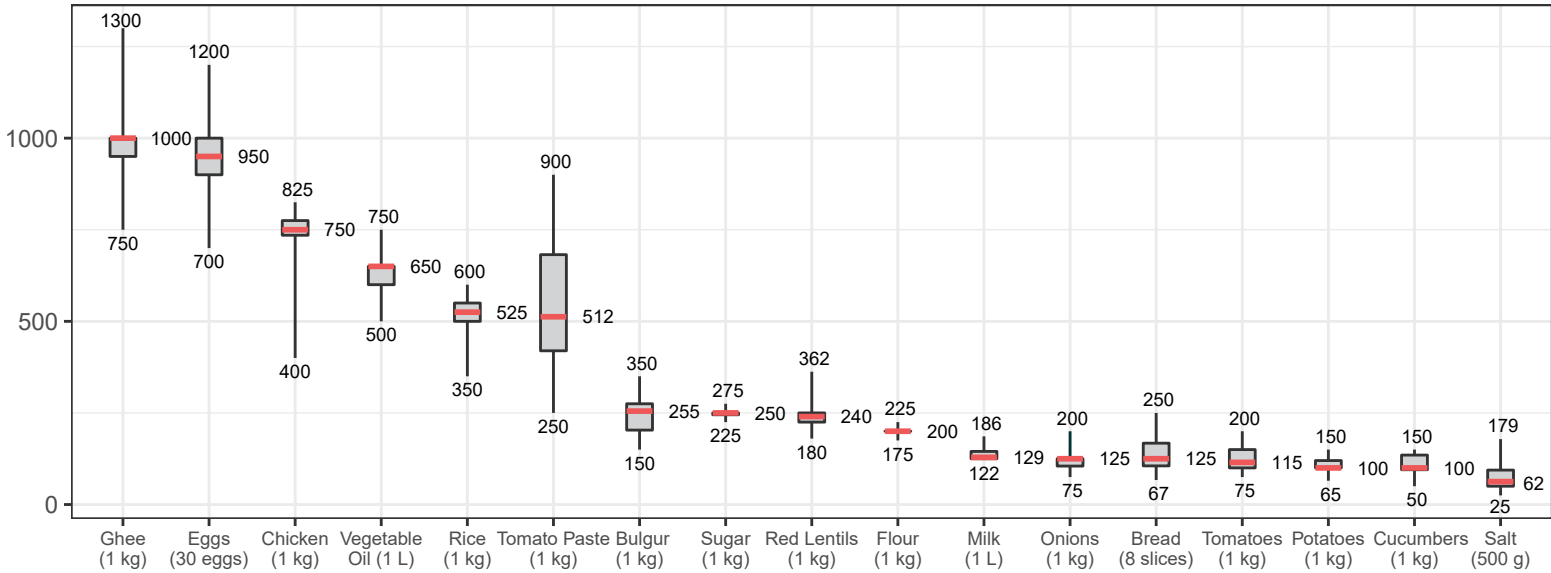
SMEB CELLPHONE DATA

Sub-districts & Communities, Syrian Pounds



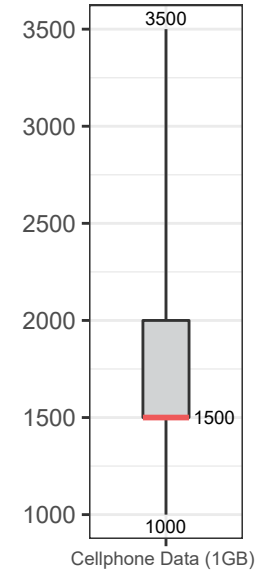
ASSESSED FOOD ITEMS

Syrian Pounds



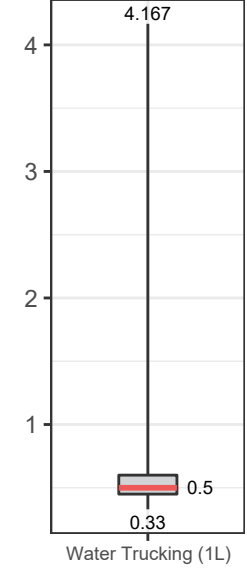
CELLPHONE DATA

1GB



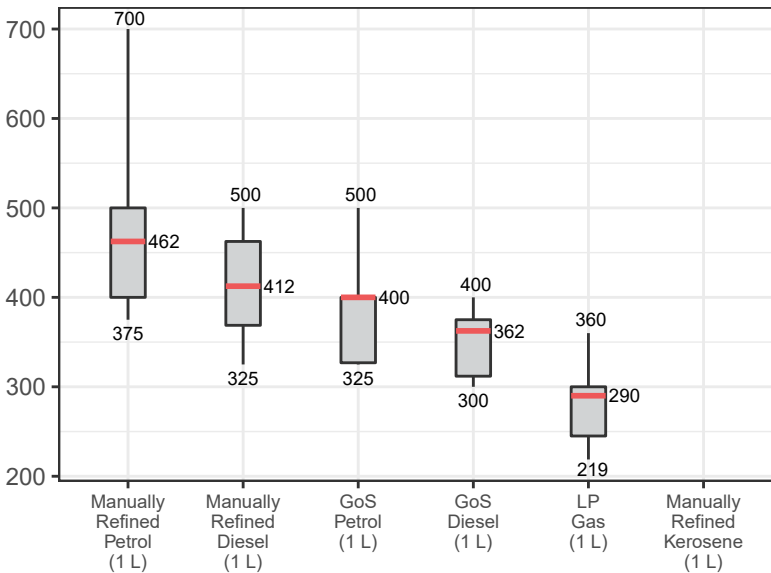
WATER TRUCKING

Syrian Pounds



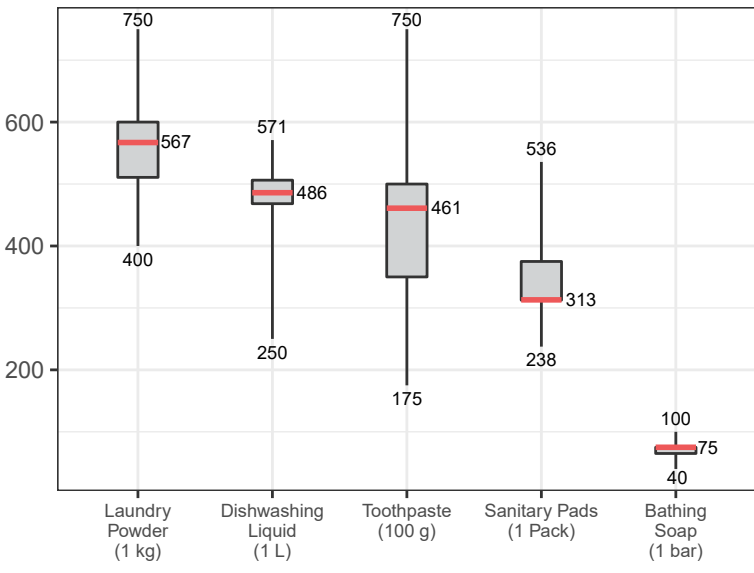
ASSESSED FUEL ITEMS

Syrian Pounds

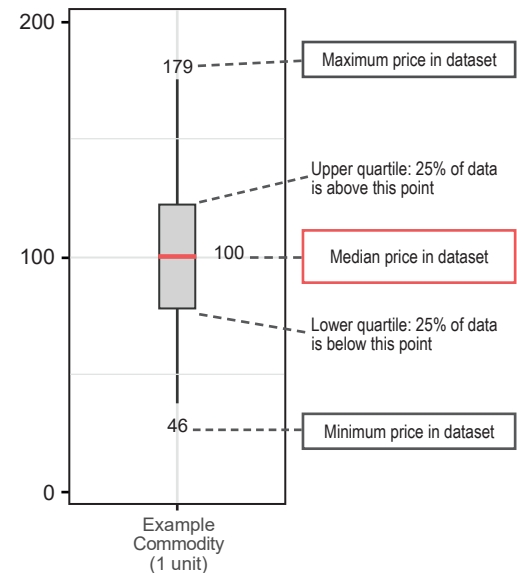


ASSESSED HYGIENE ITEMS

Syrian Pounds



READING BOXPLOTS



METHODOLOGY

To be included in the Syria Market Monitoring Exercise, markets must be permanent in nature, large enough to support at least two wholesalers, and diverse enough to provide a sufficient variety of goods and commodities. The shops surveyed within each market must be housed in permanent structures and must sell certain items to be eligible for inclusion.

Participating organisations train their enumerators on the Market Monitoring methodology and data collection tools using standard training materials developed by REACH. Each enumerator aims to assess three to five shops of each type in the main market in their assigned sub-district, using surveys to collect information about prices, current product inventory and the time needed

to replace current stocks. In sub-districts where direct surveying by enumerators is not possible, such as Lattakia and Deir-ez-Zor, data collection is conducted remotely through key informants such as shop owners, suppliers and consumers.

A survey form is deployed on KoBo each month to capture price and stock information from different types of establishments, including grocery stores, fuel traders, currency exchange shops, water trucking services and mobile phone shops, among others. Nearly all participating partners submit their data to these KoBo forms, using the KoBoCollect Android app to upload data. A small number of partners, by prior permission, collect data using fully harmonised data

collection tools deployed on other platforms, then submit their raw data to REACH for standardisation, compilation and cleaning.

Following data collection, REACH compiles and cleans all partners' data, normalising prices and cross-checking outliers. The cleaned data is then analysed by SMEB costs, components of the SMEB, and by commodities. These trends are observed at the sub-district-level and, when possible, at the community-level. Prices are divided into quartiles and boxplots are created to help CBR-TWG members understand the distribution of prices. To illustrate local variations in prices and availability, REACH uses the collected data to map the price of an SMEB in each sub-district and

adds illustrations of surrounding border crossings, with data sourced from OCHA. In addition, each SMEB component costs and transport fuel prices are graphed to visualize trends over time. The cleaned data sets are available on the REACH Resource Centre and are distributed to all participating partners, as well as to interested clusters and the broader humanitarian community.

CHALLENGES AND LIMITATIONS

As the Syria Market Monitoring Exercise currently includes 14 partners based in 3 hubs, achieving a consistent approach is inherently challenging. Participating organisations are therefore requested to adopt harmonised data collection methodologies and tools to ensure that the data uploaded is as accurate as possible.

Confirming commodity shortages in certain communities was difficult due to a lack of information about general market availability. When follow-ups were unable to confirm these shortages, this is stated in the text.

Because this exercise collects data directly from vendors and because it relies on partner organizations for its wide coverage, the exercise may lose coverage sporadically or for longer periods of time owing to challenges in accessing locations or due to loss in the shared data collection capacity of the project. This impacts the ability to report on trends, as can be seen in the line graphs and 'NA' values in the tables.

CHANGES TO COVERAGE

Given security and access constraints in the divided cities of Al-Hasakeh and Quamishli, markets on only one side of the city could be surveyed. Due to access issues and an escalation of conflict, coverage was lost in Eastern Ghouta in March 2018, while most recently some coverage in southern Syria has been lost due to an escalation of conflict beginning in June 2018.

CALCULATING 'MEDIAN CHEAPEST PRICE'

This figure is calculated by taking the median of the minimum-reported prices of a region's sub-districts. In turn, the minimum-reported prices for each sub-district were taken from the median of the minimum-reported prices of the constituent towns assessed.

CALCULATING SURVIVAL MINIMUM EXPENDITURE BASKET (SMEB) COSTS

The cost of a SMEB is calculated for each assessed sub-districts by calculating the median cheapest price of each SMEB commodity in that sub-district, then multiplying these medians by the number of units that an average Syrian household requires to purchase in a month. The composition of the SMEB can be found

on page 1 and SMEB vegetables includes potatoes, tomatoes, onions and cucumbers.

WHAT IS THE CASH-BASED RESPONSES TECHNICAL WORKING GROUP?

The Cash-Based Responses Technical Working Group (CBR-TWG) was established in May 2014 to analyse the impact of the ongoing conflict on markets in Syria and guide the implementation of humanitarian cash and voucher programmes within those markets. REACH and the CBR-TWG have been partners on the Syria Market Monitoring Exercise since early 2015. Since February 2017, the exercise expanded coverage into the south, bringing monthly market assessments to communities in Damascus, Rural Damascus, Dar'a and Quneitra governorates.

ABOUT REACH

REACH is a joint initiative of two international non-governmental organizations — ACTED and IMPACT Initiatives — and the UN Operational Satellite Applications Programme (UNOSAT). REACH facilitates the development of information tools and products that enhance the capacity of aid actors to make evidence-based decisions in emergency, recovery and development contexts. By doing so, REACH contributes to ensuring that communities affected by emergencies receive the support they need. All REACH activities are conducted in support to and within the framework of inter-agency aid coordination mechanisms. For more information, please visit our website at www.reach-initiative.org, contact us directly at geneva@reach-initiative.org or follow us on Twitter at [@REACH_info](https://twitter.com/REACH_info).