

Idleb Governorate, April 2018

Humanitarian Situation Overview in Syria (HSOS)

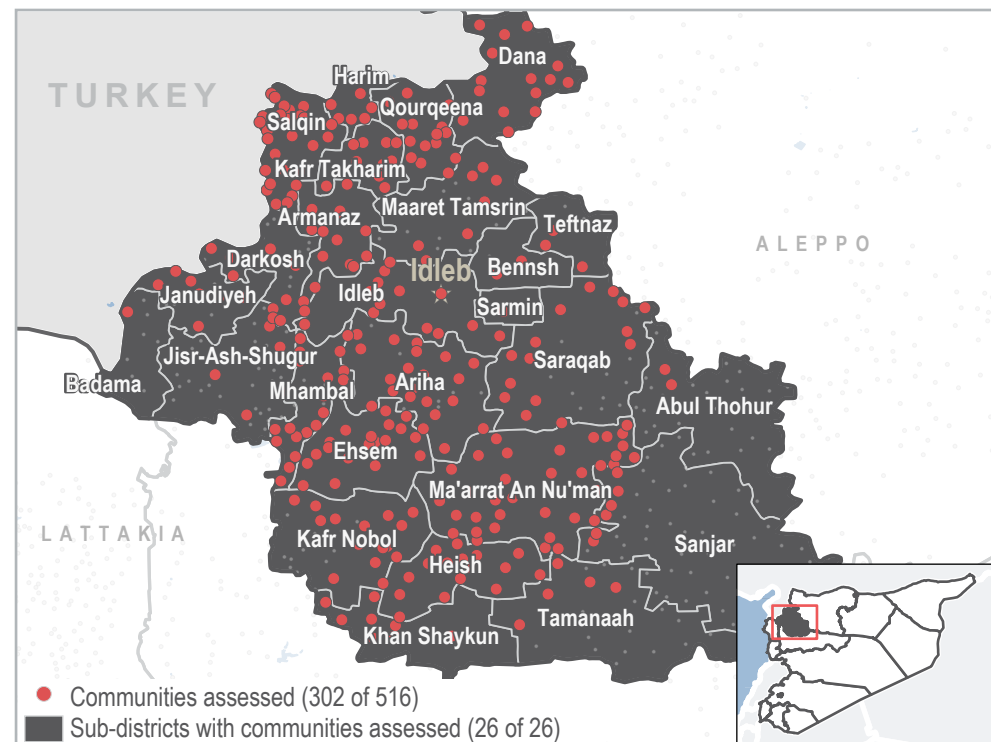
OVERALL FINDINGS¹

Situated in northwest Syria, Idleb governorate hosts one of the largest IDP populations in Syria. Key Informants (KIs) reported that **287** of the assessed communities hosted IDPs in April, approximately **701,049** in total. Additionally, new IDP and refugee arrivals were reported in **28** of the assessed communities. Approximately **12,145** spontaneous IDP returns were seen in **20** communities throughout Ariha, Al Ma'ra districts, and Idleb districts, the majority of whom reportedly returned to Um Elkhalayel, Jarada, Babilla, Halbeh, and Tal Tufan communities. KIs in these communities cited family reunification and a perceived cessation of hostilities as reasons for return. Spontaneous refugee returns from Lebanon and Turkey were reported in **7** communities (approximately **303** in total), and the most commonly reported reasons for return were a perceived cessation of hostilities and family reunification². Additionally, **30** of the assessed communities, located primarily in Al Ma'ra and Harim districts, reported that pre-conflict populations left their communities in April due to an escalation in conflict.

While the majority of communities (**93%**) reported that members of their pre-conflict population most commonly lived in independent apartments or houses, IDPs most commonly lived in independent or shared apartments or houses. Additionally, **8%** of the communities reported that IDPs most commonly lived in tents. The majority of the assessed communities reported that generators and batteries were their main source of electricity in April, while **64** communities, mainly in Al Ma'ra district, reported solar power as their main source. In terms of fuel, **251** of the assessed communities stated that they experienced no lack of fuel. Additionally, in the [April Market Monitoring Situation Overview](#), there was a reported drop in fuel and water prices, attributed to a decrease in conflict in Afrin, allowing for the transport of fuel to resume.

KIs reported that Healthcare was one of the top priority needs throughout the assessed communities. Furthermore, **185** of the assessed communities reported facing barriers to accessing healthcare services, with **115** reporting that there were no healthcare facilities available in the area. The most commonly reported health problems were severe diseases affecting children under five, skin diseases, and acute respiratory infections in April. In terms of water, **144** of the assessed communities reported having an insufficient amount of water to cover household needs. Furthermore, Kabta community reported that the water from their primary source tasted or smelled bad. Additionally, **184** of the assessed communities reported facing challenges in accessing sufficient amounts of food in April. The main challenges reported in these communities were a lack of resources to buy available food as well as some food items being too expensive. Additionally, **251** of the assessed communities reported using coping strategies to deal with a lack of income, with the majority of KIs reporting that the average monthly household income was **less than 50,000 SYP**. Furthermore, KIs reported that some children were being sent to work or beg as a coping strategy to deal with the lack of income³. Children faced additional barriers to education in **50** of the assessed communities, most commonly due to a lack of teaching staff and a lack of school supplies.

Coverage



Top 3 reported priority needs

1. Food security
2. Water security
3. Healthcare

Demographics*

2,086,051 people in need

1,024,251 (Male icon) 1,061,800 (Female icon)

* Figures based on HNO 2018 population data for the entire governorate.

KEY EVENTS

Forces advance into southern Idleb, escalating conflict in the governorate ⁴ .	An estimated 100,000 displaced by offensive in southern Idleb ⁵ .	Areas in southern Idleb become inaccessible to humanitarian actors due to ongoing hostilities ⁶ .	The group known as the Islamic State of Syria and the Levant (ISIL) is ousted from Idleb ⁷ .	Hundreds of families return to government-held eastern Idleb after a crossing opened on March 3rd ⁸ .	Limited response capacity to provide assistance in Idleb is stretched further as thousands more arrive from Eastern Ghouta ⁹ .
Mid December 2017	Early-mid January 2018	Early-mid January 2018	13 February 2018	Early March 2018	March 2018

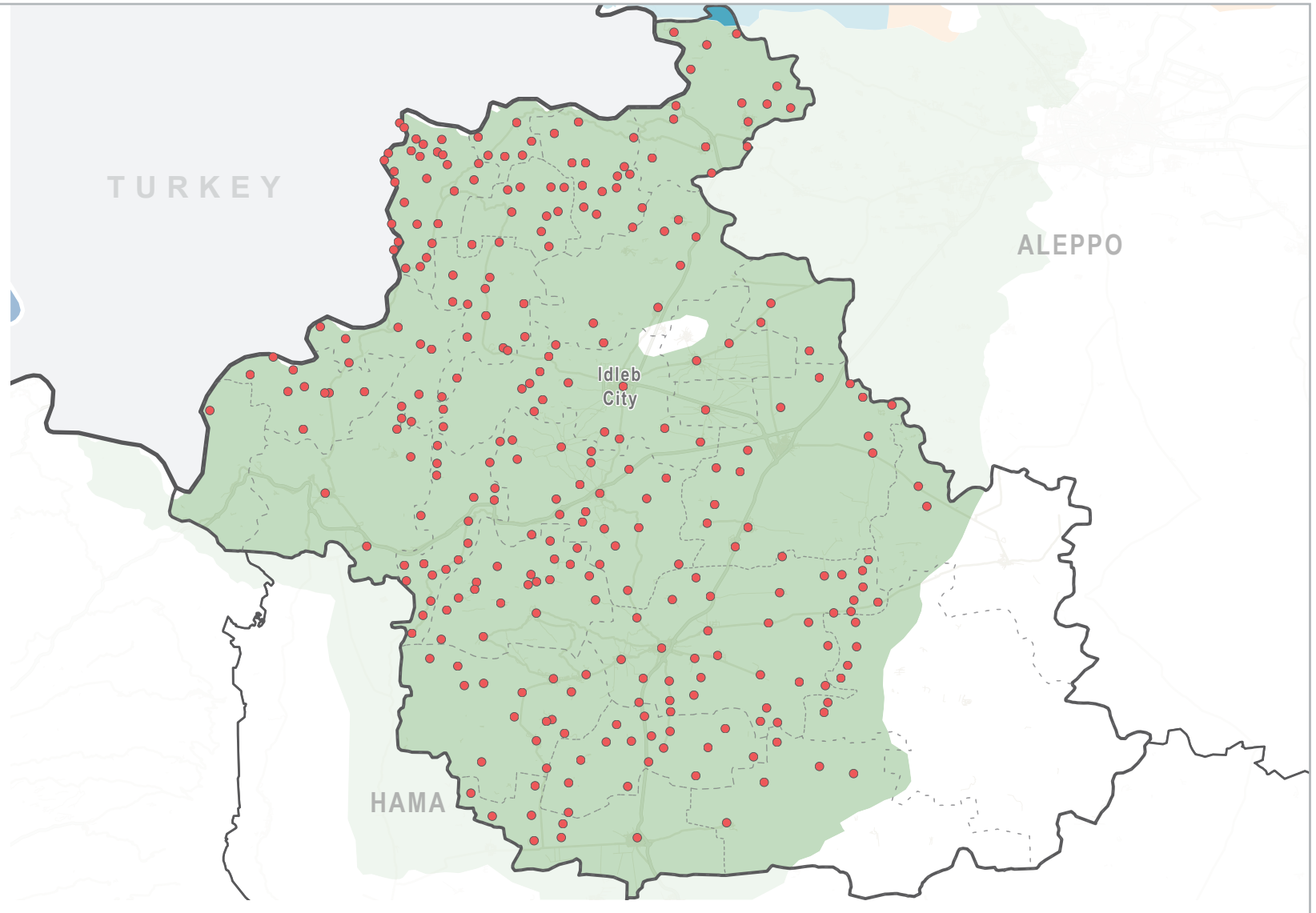
Idleb Governorate, April 2018

Governorate areas of influence:

Area of influence

Sourced from Live UA Map, 30 April 2018

-  Opposition Groups
-  Opposition - Free Syrian Army (Olive Branch/Euphrates Shield)
-  Democratic Federation of Northern Syria - Syrian Democratic Forces (SDF-coalition)
-  Democratic Federation of Northern Syria - Syrian Democratic Forces (SDF)
-  ISIL-affiliated groups
-  Assessed Community



Idleb Governorate, April 2018

DISPLACEMENT

21,805 - 26,881 Estimated number of IDP arrivals in assessed communities in April.

11,475 - 13,419 Estimated number of spontaneous returns in assessed communities in April².

Communities with the largest estimated number of IDP arrivals:

Ariha	4,000 - 5,000
Orm Eljoz	1,900 - 2,100
Kafr Takharim	1,000 - 1,500

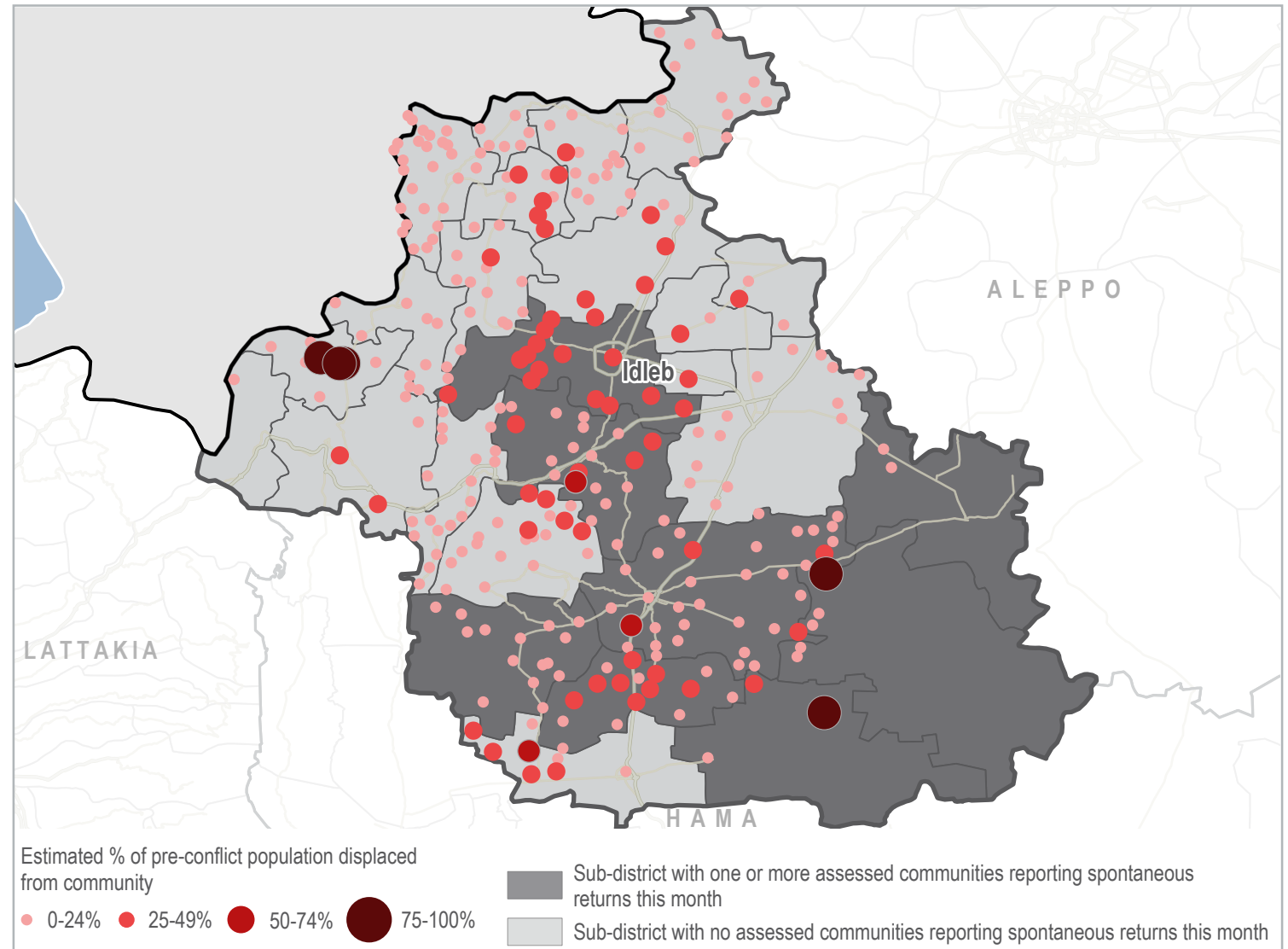
Top 3 sub-districts of origin of most IDPs arrivals^{3,4}:

Kafr Batna (Rural Damascus)	12%
Arbin (Rural Damascus)	11%
Harasta (Rural Damascus)	10%

272 communities reported no PCP departures. Top 3 reasons for PCP displacement in the remaining **30** assessed communities^{3,4}:

Escalation of conflict	67%
Loss of income	47%
Access to money to pay for movement	30%

Estimated percent of pre-conflict population (PCP) displaced from community:



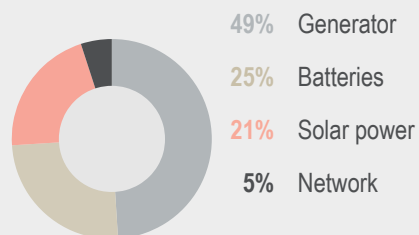
³ Multiple choices allowed.

⁴ By percent of communities reporting.

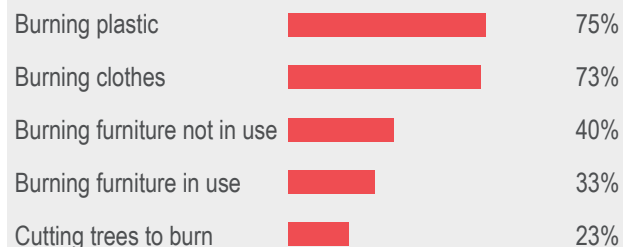
Idleb Governorate, April 2018

SHELTER AND NFI

Primary source of electricity reported:⁴



251 communities reported no lack of fuel. Most common strategies to cope with a lack of fuel in the remaining 48 assessed communities^{3,4}:



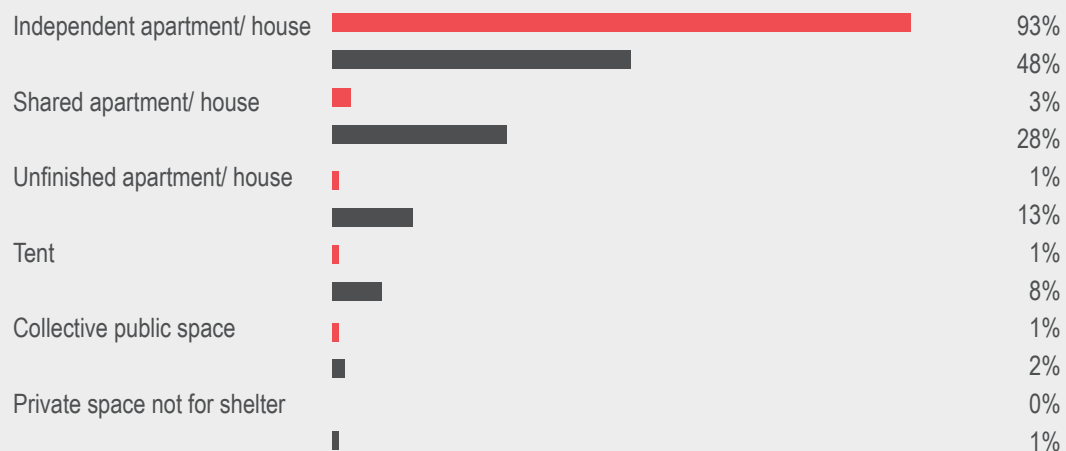
5,346 SYP

Governorate average reported rent price in Syrian Pounds (SYP) across assessed communities.⁵

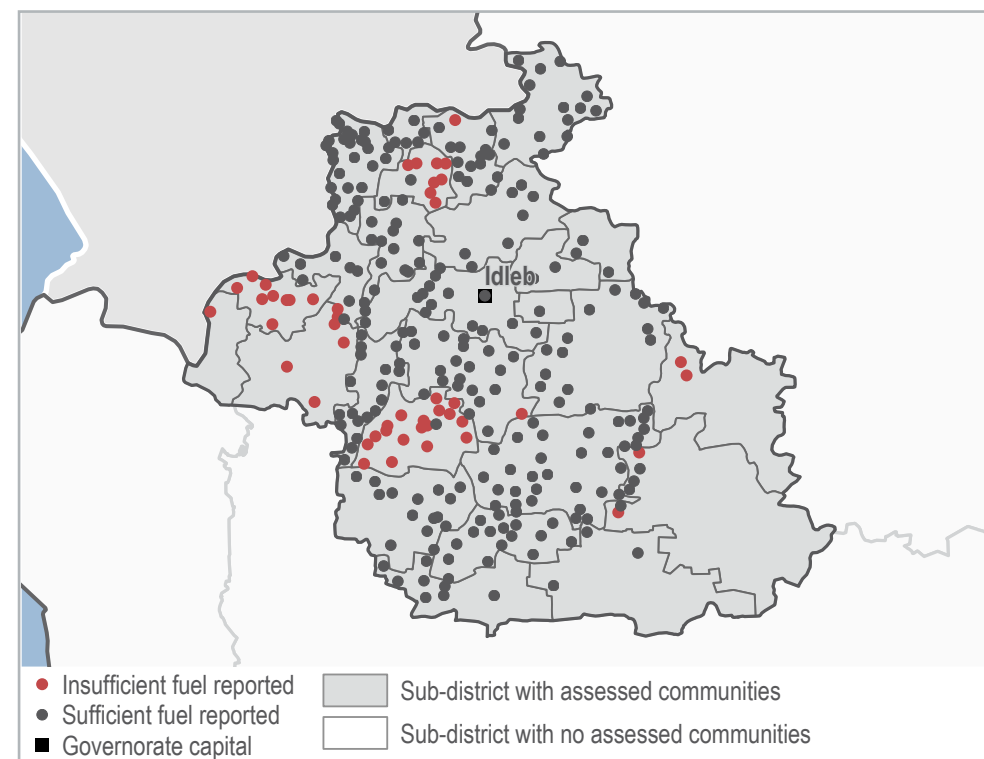
6,108 SYP

Syrian average reported rent price in SYP across assessed communities.⁵

Most commonly reported shelter type for PCP (in red) and IDP (in grey) households⁴:



Fuel sufficiency:



Reported fuel prices (in SYP)⁵:

Fuel type:	Governorate average price in April:	Governorate average price in March:	Syrian average price in April:
Coal (1 kilogram)	114	135	280
Diesel (1 litre)	247	449	227
Butane (1 canister)	7,641	12,482	5,940
Firewood (1 tonne)	56,494	60,726	53,131

³ Multiple choices allowed.

⁴ By percent of communities reporting.

⁵ 1 USD = 434 SYP (UN operational rates of exchange as of 1 April 2018)

HEALTH

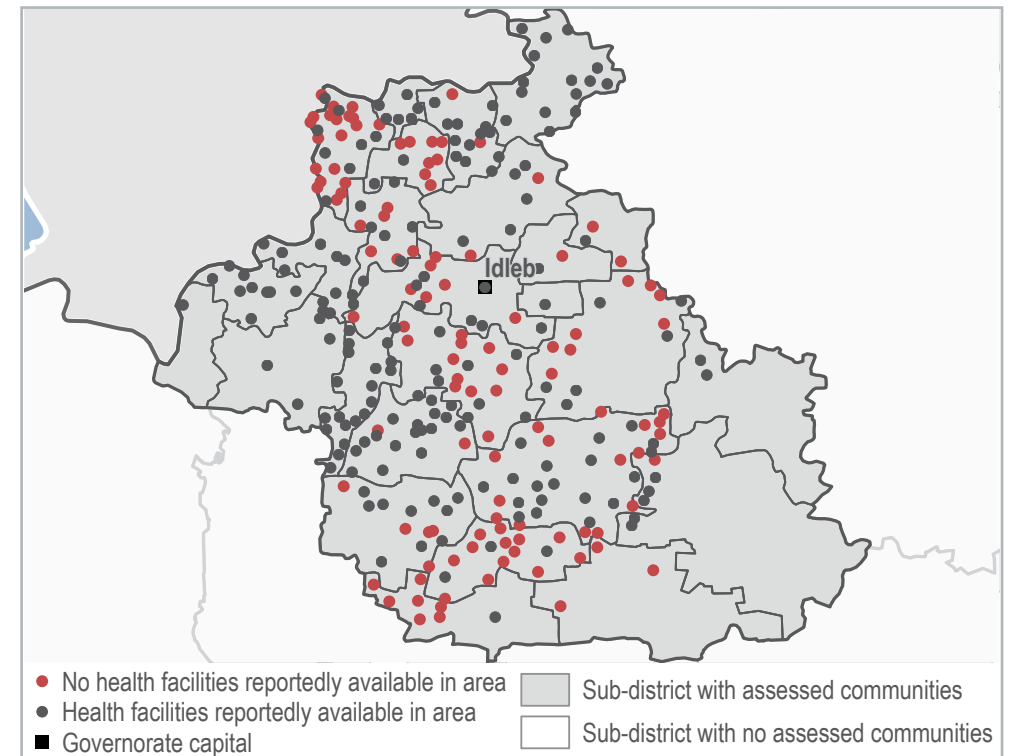
- 75** Communities reported that no assessed medical items were available in their community.
- 9** Communities reported that the majority of women did not have access to formal health facilities to give birth.

114 communities reported that residents experienced no barriers to accessing healthcare services. The barriers in the remaining **185 assessed communities** were^{3,4}:



299 communities reported that residents were not using coping strategies to deal with a lack of medical supplies.

Presence of health facilities in assessed communities:



Top 3 most needed healthcare services reported^{3,4}:

All health services	37%
Assistive devices	31%
Antenatal care	31%

Top 3 most common health problems reported^{3,4}:

Severe diseases affecting those younger than 5	57%
Skin diseases	51%
Acute respiratory infections	40%

³ Multiple choices allowed.

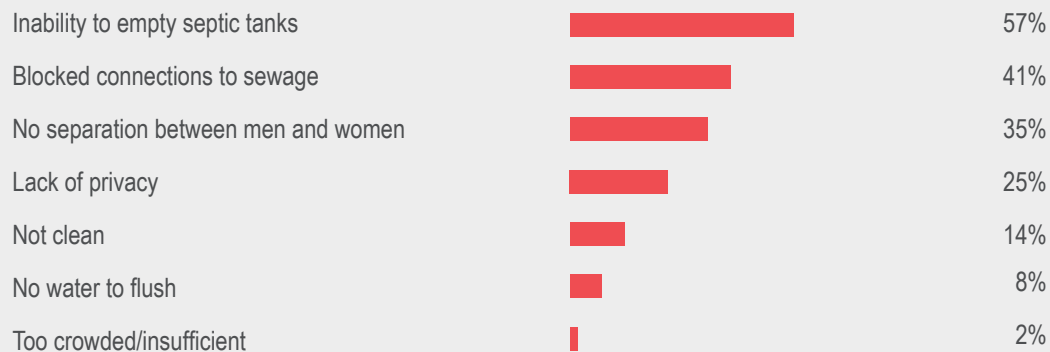
⁴ By percent of communities reporting.

Idleb Governorate, April 2018

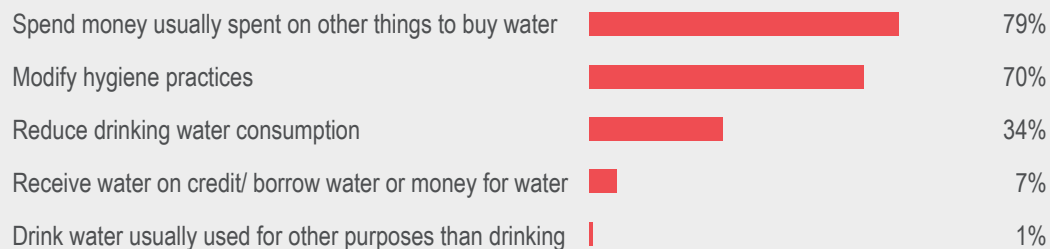


- 1 Community reported that water from their primary source tasted and/or smelled bad.
- 0 Communities reported that drinking water from their primary source made people sick.

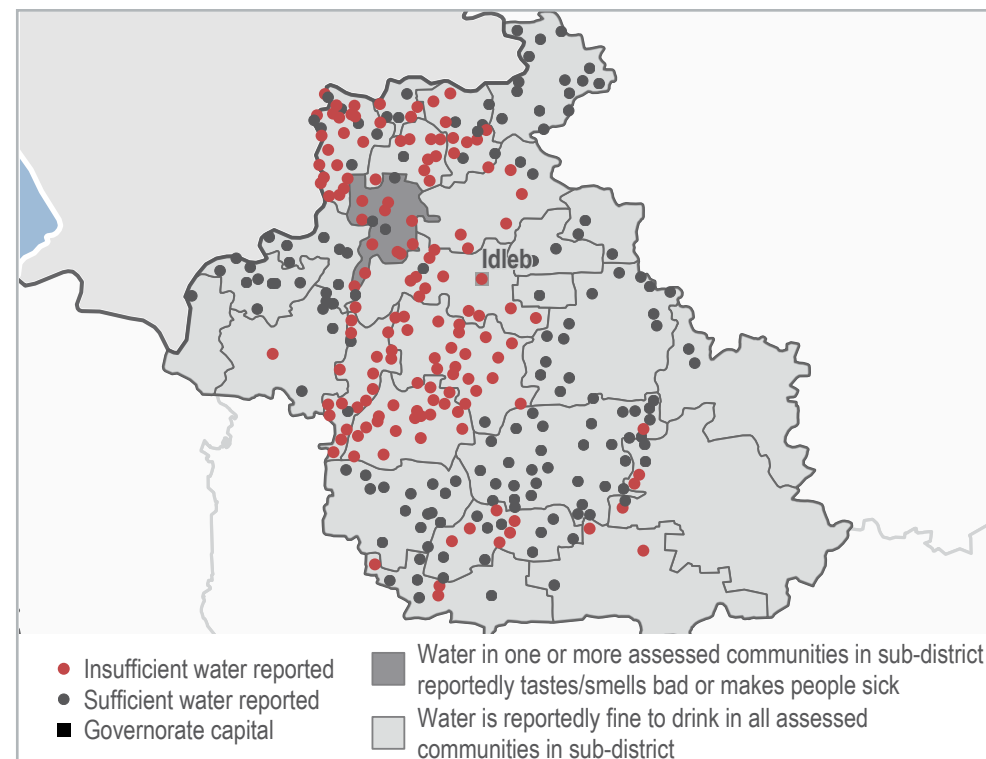
172 communities reported that residents had no problems with latrines. The most prevalent problems with latrines in the remaining 127 assessed communities were^{3,4}:



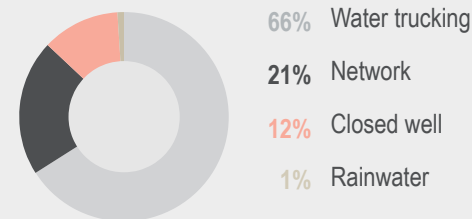
155 communities reported that they had sufficient amounts of water to meet household needs. The most common coping strategies to deal with a lack of water in the remaining 144 assessed communities were^{3,4}:



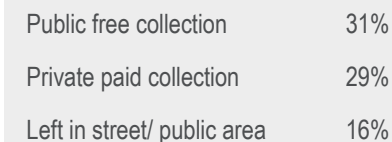
Water sufficiency for household needs:



Primary drinking water source reported⁴:



Top 3 reported methods of garbage disposal^{3,4}:



³ Multiple choices allowed.

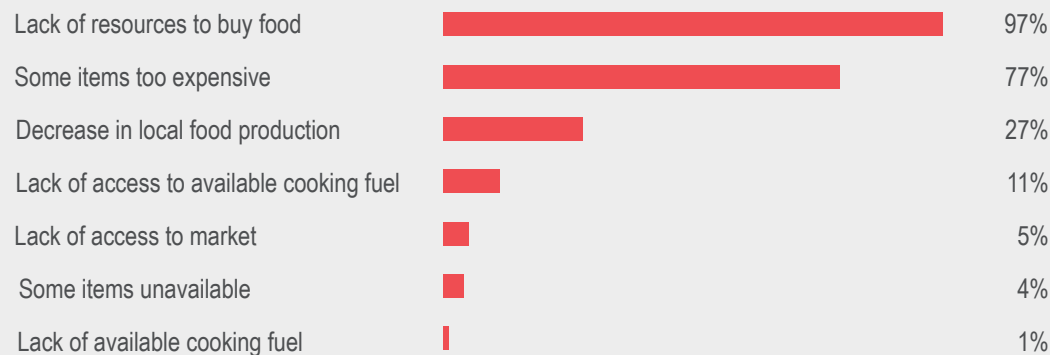
⁴ By percent of communities reporting.

Idleb Governorate, April 2018

FOOD SECURITY

- 14** Communities reported not having received a food distribution in the last 12 months.
- 1** Community reported that residents were unable to purchase food at shops and markets.

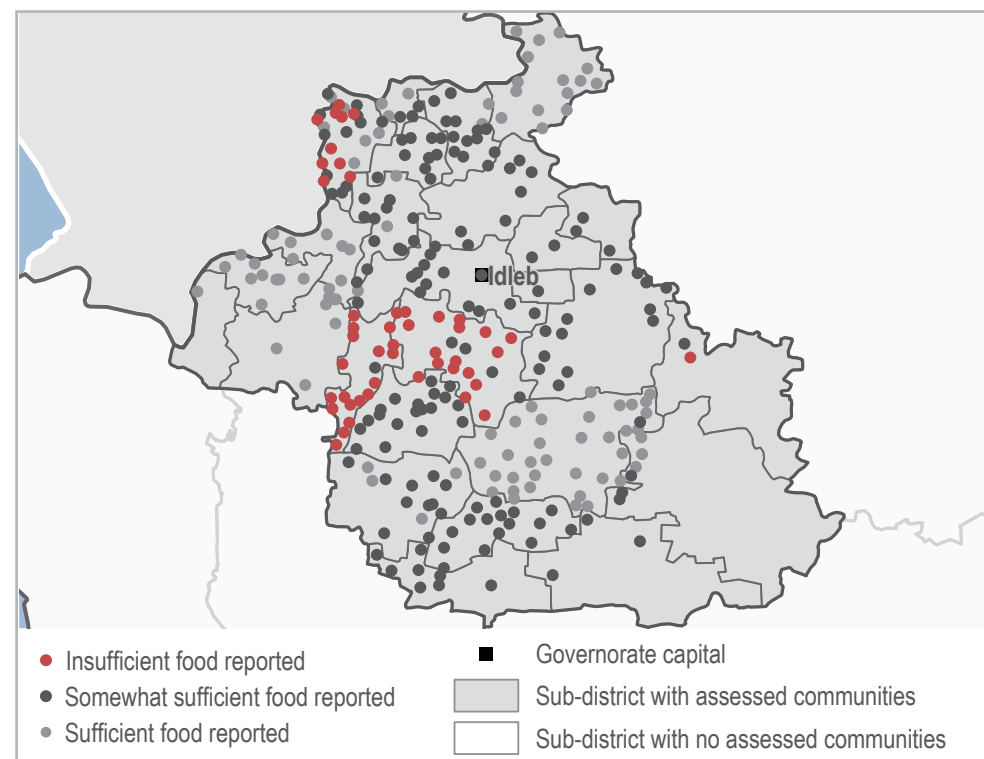
115 communities reported that residents experienced no challenges in accessing food. The most common difficulties experienced in the remaining 184 assessed communities were^{3,4}:



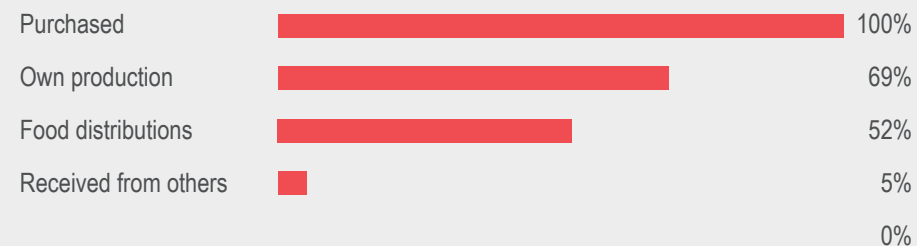
Core food item prices reported (in SYP)⁵:

Food item:	Governorate average price in April:	Governorate average price in March:	Syrian average price in April:
Bread public bakery (1 loaf)	132	147	115
Rice (1 kilogram)	339	377	430
Lentils (1 kilogram)	297	333	330
Sugar (1 kilogram)	307	316	308
Cooking oil (1 litre)	504	527	546

Food sufficiency:



Most common ways of obtaining food reported^{3,4}:



³ Multiple choices allowed.

⁴ By percent of communities reporting.

⁵ 1 USD = 434 SYP (UN operational rates of exchange as of 1 April 2018)

LIVELIHOODS

Less than 50,000 SYP Most commonly reported household income range⁵.

23,005 SYP Governorate average food basket price^{5,6}.

0 Communities reported that residents used extreme food-based coping strategies to deal with insufficient income⁷.

48 communities reported that residents had enough income to cover household needs. The most commonly reported coping strategies to deal with a lack of income in the remaining **251** assessed communities were^{3,4}:



Most commonly reported main sources of income^{3,4}:



³ Multiple choices allowed.

⁴ By percent of communities reporting.

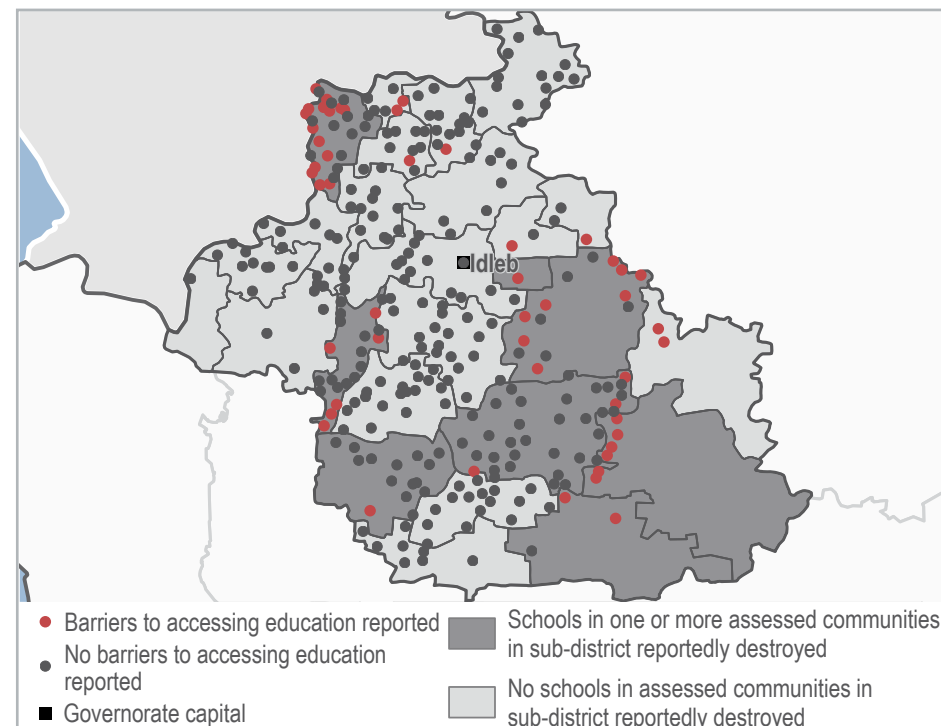
⁵ 1 USD = 434 SYP (UN operational rates of exchange as of 1 April 2018)

⁶ Calculation of the average price of a food basket is based on the World Food Programme's standard basket of dry goods. The food basket includes 37 kg of bread, 19 kg of rice, 19 kg of lentils, 5 kg of sugar, and 7 kg of vegetable oil, and provides 1,930 kcal a day for a family of five for a month.

⁷ Extreme food-based strategies: Eating food waste; eating non-edible plants and spending days without eating.

EDUCATION

Barriers to accessing education services:



249 communities reported that most children were able to access education. The most commonly reported barriers to education in the remaining **50** assessed communities were^{3,4}:



METHODOLOGY

The HSOS project, formerly known as the AoO (Area of Origin) project, is a monthly assessment that aims to provide comprehensive, multi-sectoral information about the humanitarian situation inside Syria. This factsheet presents information gathered in 302 communities in May 2018, referring to the situation in Idleb Governorate in April 2018. It presents key indicators, rather than the entire range of indicators gathered in the HSOS questionnaire. For community-level data on assessed sub-districts in Al-Hasakeh, Dar'a, Idleb, Rural Damascus and Quneitra, please refer to the monthly sub-district factsheets, available on the [REACH Resource Centre](#). The complete HSOS dataset is disseminated monthly via the REACH Syria mailing list.

Wherever possible, information was collected through an enumerator network. REACH enumerators are based inside Syria and interview Key Informants (KIs) directly in the community about which they are reporting. Where access and security constraints rendered direct data collection unfeasible, KI interviews were conducted remotely through participants identified in camps and settlements in neighbouring countries by REACH field teams. Participants contact KIs in their community in Syria to collect information about their community. KIs were asked to report at the community level.

KIs generally included local council members, Syrian NGO workers, medical professionals, teachers, shop owners and farmers, among others, and were chosen based on their community-level or sector specific knowledge. In cases where KIs disagreed on a certain piece of information, enumerators triangulated the data with secondary sources or selected the response provided by the KI with the more relevant sector-specific background. For each question asked, confidence levels were assigned based on the KIs area of expertise and knowledge of the sector-specific situation. The confidence levels associated with each question are presented in the final dataset. The full confidence matrix used to assign confidence levels is available upon request.

Findings were triangulated through secondary sources, including news monitoring and humanitarian reports. Where necessary, follow-up was conducted with enumerators and participants. Findings are indicative rather than representative, and should not be generalised across the governorate.

ENDNOTES

¹ All information and figures reported in HSOS factsheets refer to the situation in assessed communities and cannot be generalised to other non-assessed communities of the governorate.

² Returns are not necessarily voluntary, safe, or sustainable.

³ 'Children' includes all persons below the age of 18.

⁴ Edelman, Ibrahim and Al-Masalma (20 December 2017). Government forces advance inside rebel-held Idlib province. Syria Direct. Retrieved from <http://syriadirect.org>.

⁵ BBC (10 January 2018). Syria war: Assault on rebel stronghold of Idlib 'displaces 100,000'. Retrieved from <http://www.bbc.com>.

⁶ UNHCR (18 January 2018). Syria: Flash update on recent events - 18 January 2018. Retrieved from <https://reliefweb.int>.

⁷ The Straits Times (13 February 2018). Syria's Idlib ISIS-free after 'surrender': Spokesman, monitor. Retrieved from <http://www.straitstimes.com>.

⁸ Al-Zarier, Adely (7 March 2018). 'Hundreds' of families return to government-held eastern Idlib through newly established crossing. Retrieved from <http://syriadirect.org>.

⁹ UN Office for the Coordination of Humanitarian Affairs (27 March 2018). Statement to the Security Council on the humanitarian situation in Syria. Retrieved from <https://reliefweb.int>.

About REACH

REACH is a joint initiative of two international non-governmental organisations - ACTED and IMPACT Initiatives - and the UN Operational Satellite Applications Programme (UNOSAT). REACH aims to strengthen evidence-based decision making by aid actors through efficient data collection, management and analysis before, during and after an emergency. By doing so, REACH contributes to ensuring that communities affected by emergencies receive the support they need. All REACH activities are conducted in support to, and within the framework of, inter-agency aid coordination mechanisms. For more information, please visit our website: www.reach-initiative.org. You can contact us directly at: geneva@reach-initiative.org and follow us on Twitter: @REACH_info.