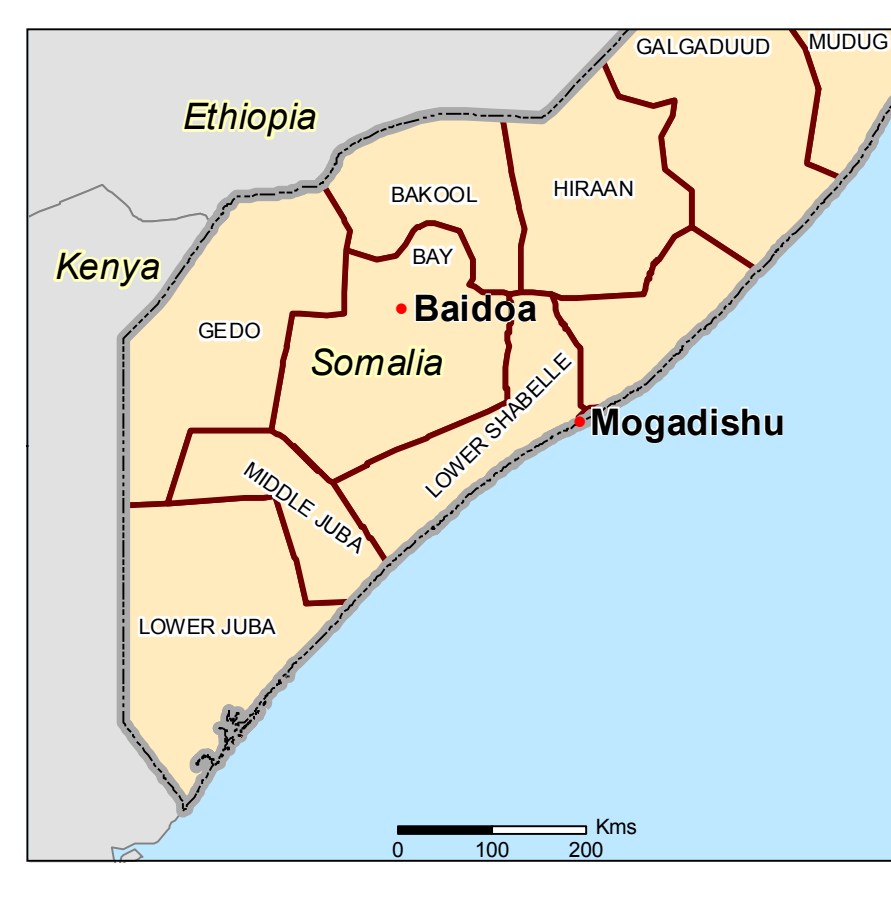
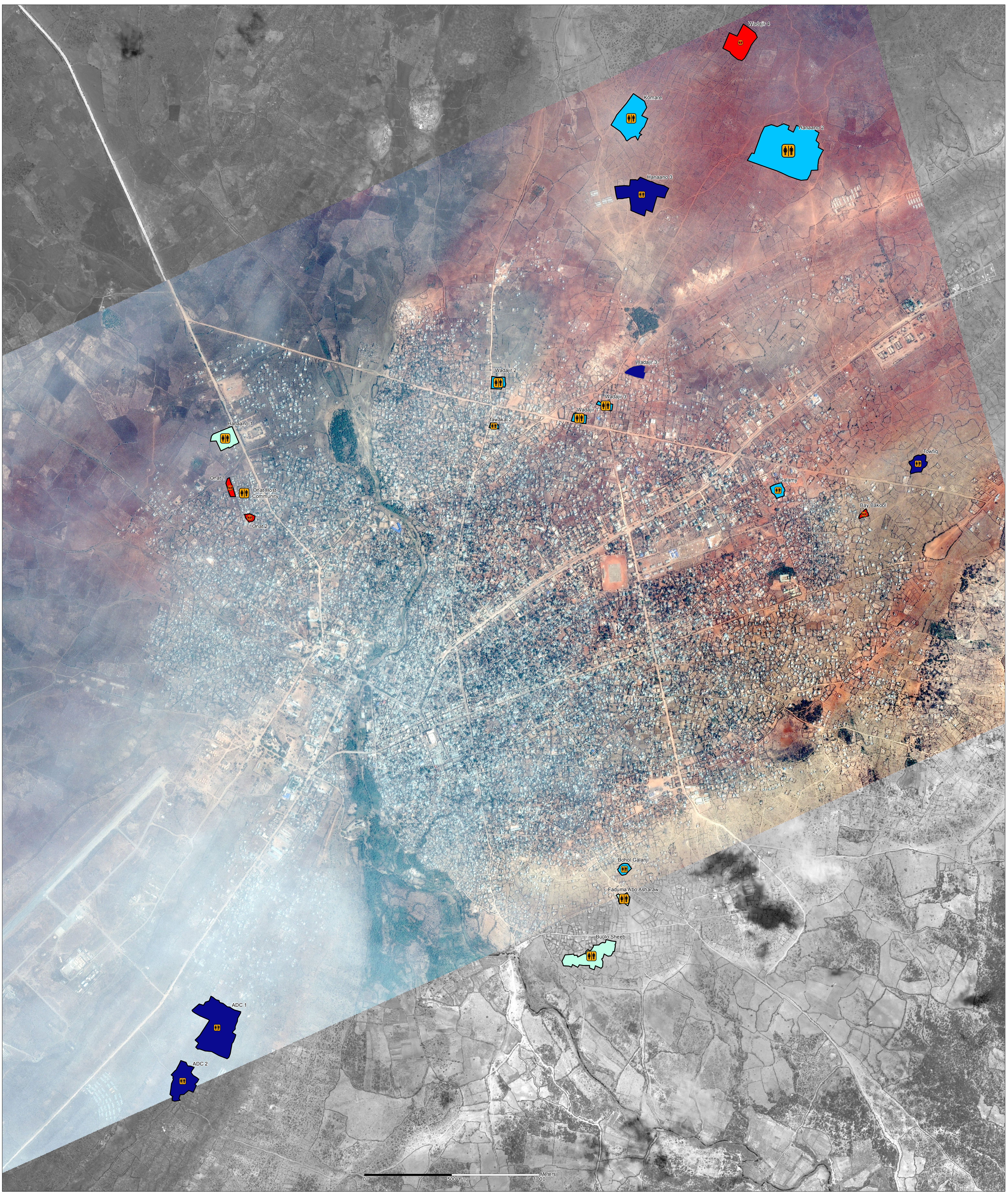


# Somalia - Baidoa - WASH

## Number of Dropholes per Settlement (December 2013)



**Dropholes per Settlement**

- No latrine
- 1 - 10
- 11 - 50
- 51 - 100
- 101 - 200

**Number of people per drophole**

- no latrine
- 1 - 20
- 21 - 100
- 101 - 978

**Legend:**

- Assessed IDP Settlement
- Main City
- International Boundary
- Region

Data sources:  
Facilities and IDP sections: REACH assessment  
Shelters: Shelter UNOSAT analysis (21.08.2013 - 08.02.2014)  
Admin level: OCHA COD  
Imagery (1): 08 February 2014 (Pleiades/50 cm)  
Copyright : CNES 2013 - Distribution Astrum Services /Spot Image  
Imagery (2): 21 August 2013 (WorldView-1/50cm)  
Copyright : US Dept of State, Humanitarian Information Unit, NextView License  
Coordinate System: GCS WGS 1984  
File: SOM\_Baidoa\_Latrine\_Density2\_21mars2014\_A0  
Contact : reach.mapping@impact-initiatives.org

The assessment does not cover all IDP settlements in Baidoa town. Areas of assessment represent only those identified by the clusters as priorities. The remaining shelters have not been assessed but may be interesting for future intervention by actors.

Note: Data, designations and boundaries contained on this map are not warranted to error-free and do not imply acceptance by the REACH partners and associated donors mentioned on this map. For Humanitarian purposes only.

Scale map A0: 7000

N  
W E  
S

Funded by

Humanitarian Aid and Civil Protection

USAID  
FROM THE AMERICAN PEOPLE

REACH  
An initiative of  
IMPACT Initiatives  
ACTED and UNOSAT

Standard Sphere project (2004), UNHCR (2007)  
Latrines: A maximum of 20 people use each toilet/latrine