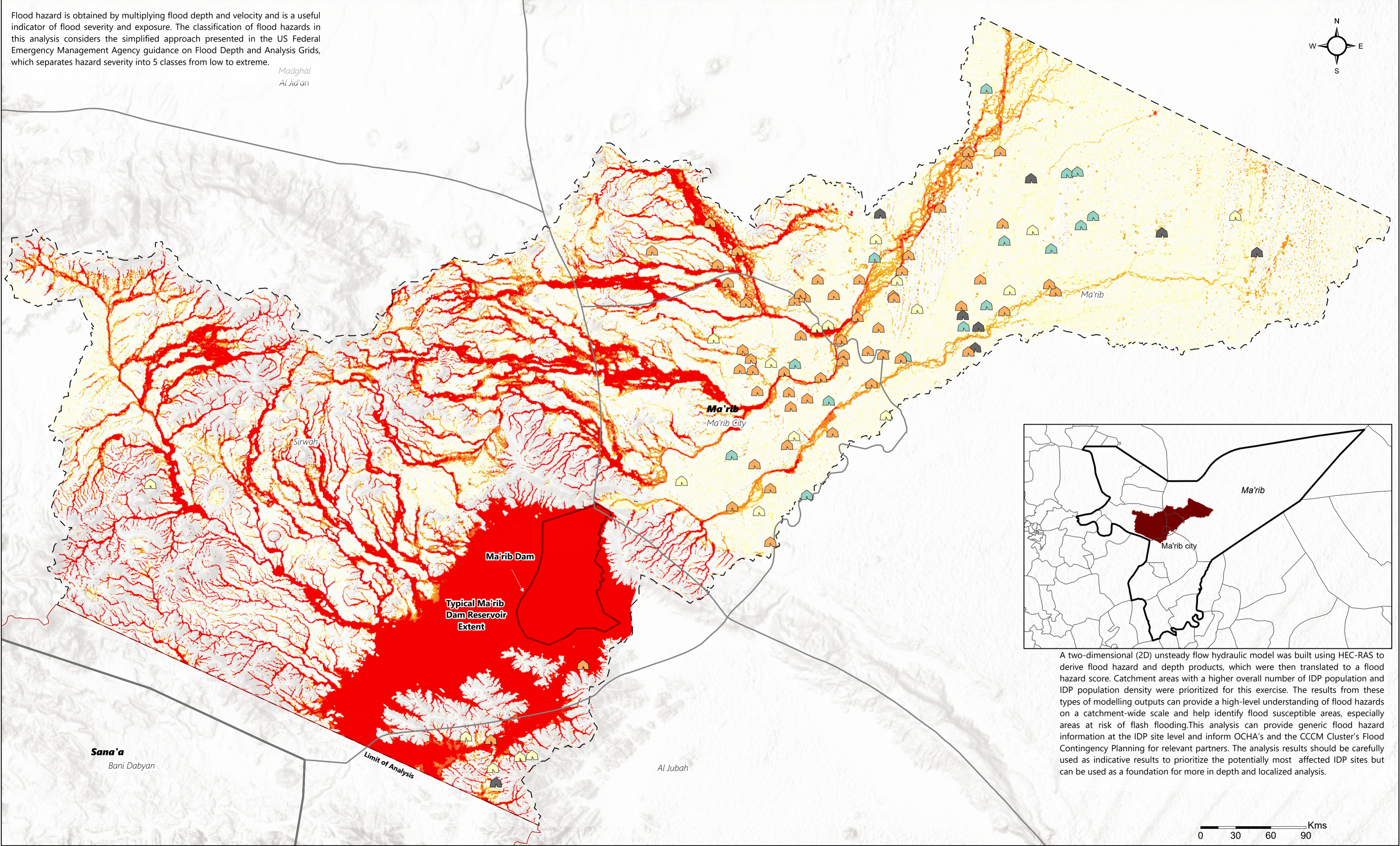


Yemen - Flood Hazard of IDP Sites

Ma'rib Governorate - Flood Hazard Model - January 2024

Version 2
Production date : 30 April 2024



- Governorate**
District
Basins
- Flood Hazard (m2/s)**
0 - 0.2 (Low - No hazard)
>0.2 - 0.5 (Medium)
>0.5 - 1.5 (High)
>1.5 - 2.5 (Very High)
>2.5 (Extreme)
- IDP Sites Flood Hazard**
Critical Hazard (0 Sites)
High Hazard (55 Sites)
Medium Hazard (20 Sites)
Low Hazard (15 Sites)
Unknown (8 Sites)

Map Description
This map illustrates IDP hosting sites in Ma'arb according to their flood hazard score classification from the REACH 2024 National Flood Hazard Analysis Dataset. Crucially, not all sites are displayed on this map due to the unavailability of GPS coordinates for many sites. This map was designed by REACH as part of the National Flood Hazard Analysis for Yemen

- Data Sources:**
• IDP Sites: CCCM IDP Hosting Site Master List (December 2023)
• Flood Data:
 • REACH Flood Hazard (HEC-RAS) Models (2022)
 • REACH Site Monitoring Tool 2023 (R1-R8) & REACH Site Reporting Tool R1 2023
 • CCCM Flood Report (January 2023)
 • 2024 CCCM National IDP Site Flood Risk Analysis, Incl Sub-National Cluster Coordinators' Estimated Flood Scores
• Admin Boundaries: OCHA
• Background: ESRI, NGA, USGS, CGIAR

Note:
Data, designations and boundaries contained on this map are not warranted to be error-free and do not imply acceptance by the REACH partners, associated, donors mentioned on this map.

Coordinate System: GCS WGS 1984
File: REACH_YEM_Map_CCCM_Ma'rib_Flood_Hazard_IDPSites_24April2024_A2_V1
Contact: mapping@impact-initiatives.org

