

IRAQ - Hamam Al Alil 2 Camp

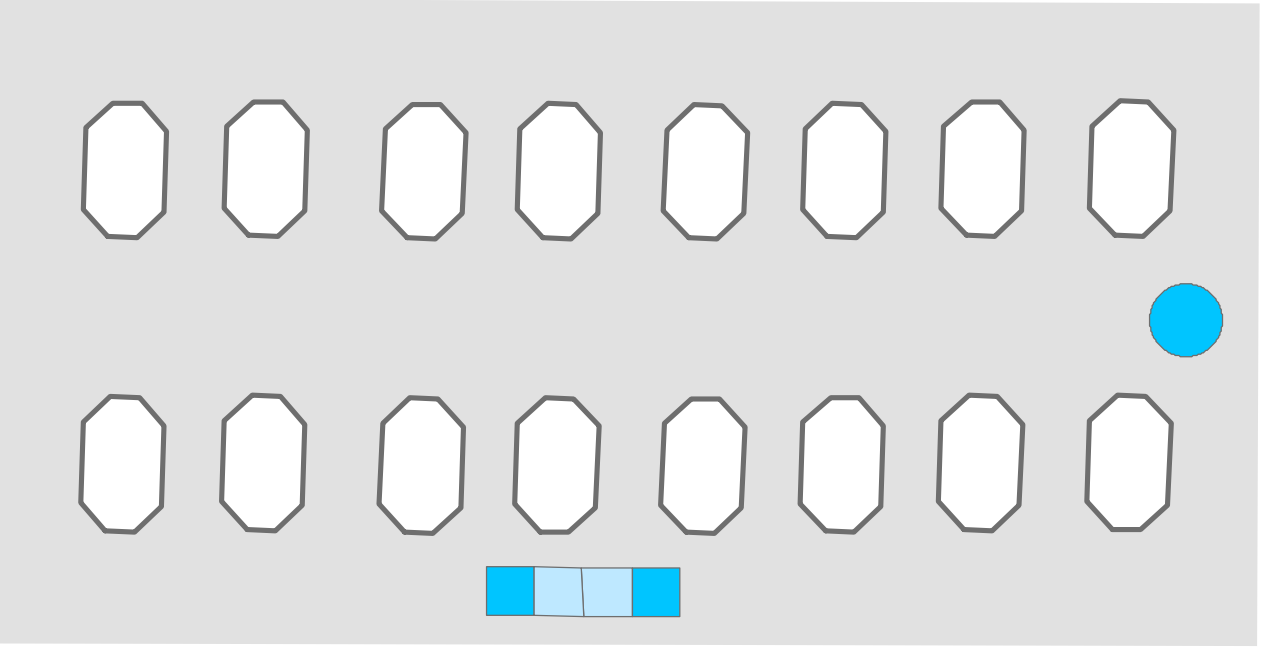
For Humanitarian Purposes Only
Production date: 8 February 2018



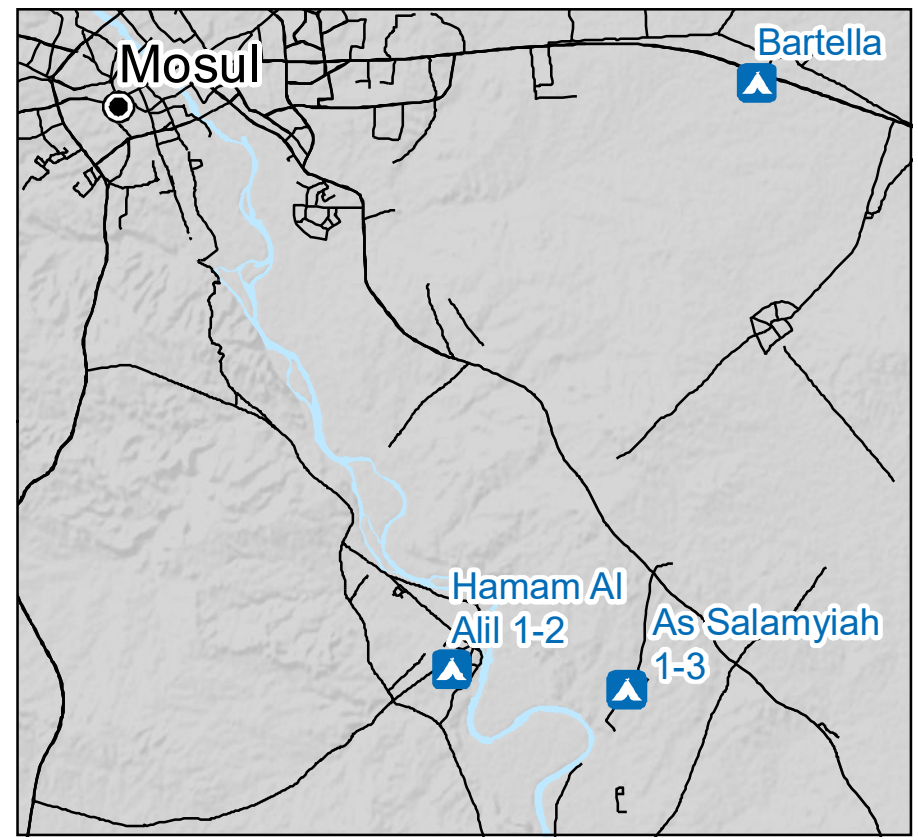
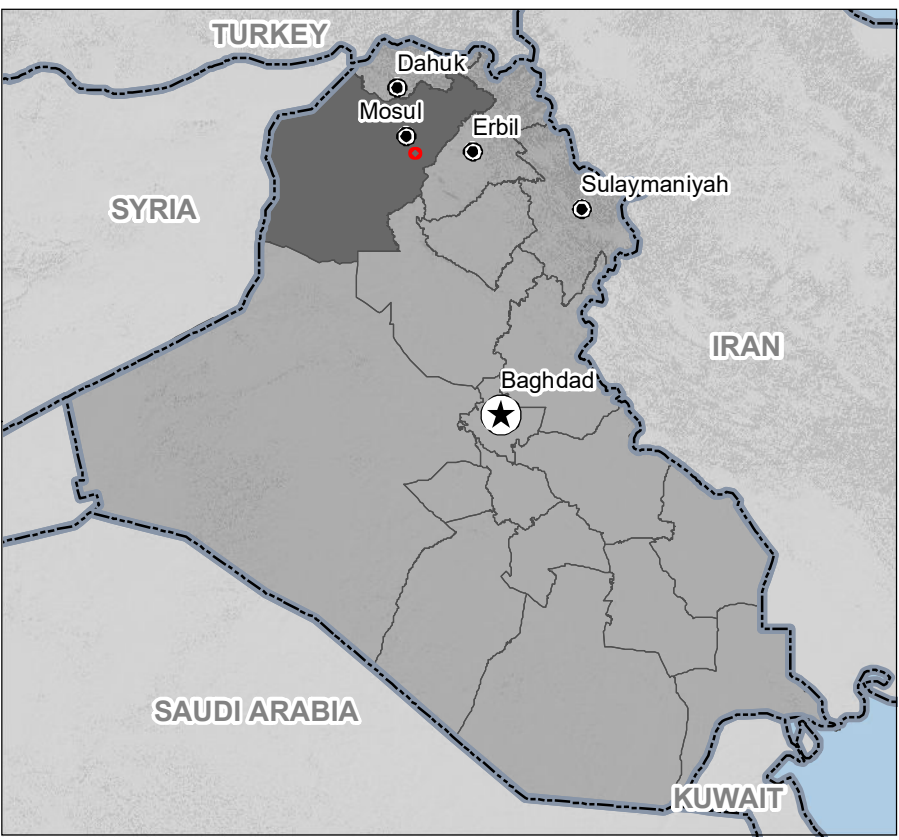
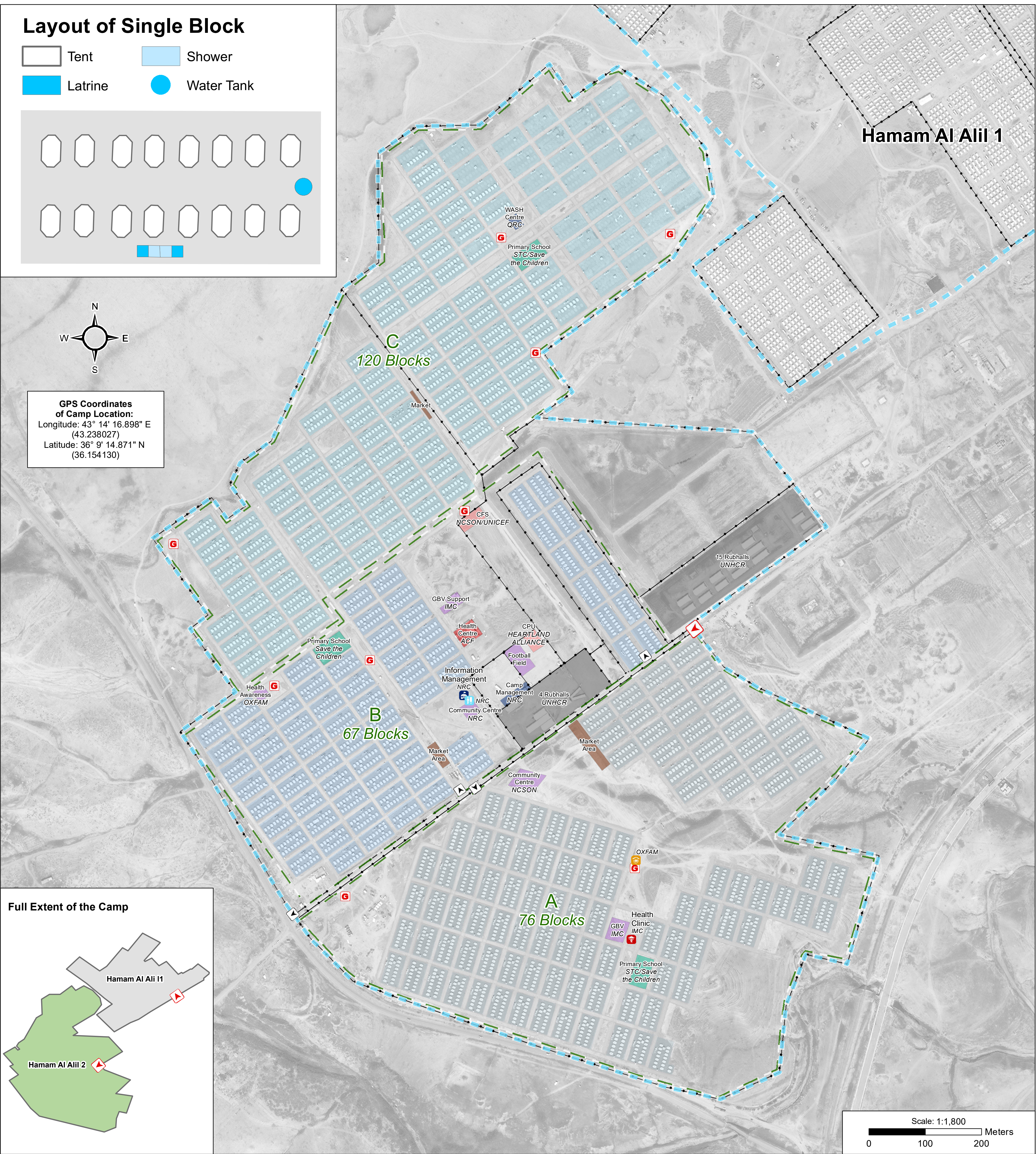
General Infrastructure - Updated 28 December 2017

Layout of Single Block

- Tent
- Shower
- Latrine
- Water Tank



GPS Coordinates of Camp Location:
Longitude: 43° 14' 16.898" E
(43.238027)
Latitude: 36° 9' 14.871" N
(36.154130)



Camp Infrastructure

- Camp Delineation
- Fence
- Sector
- Block
- Health
- Office
- Education
- Child Friendly Space
- Community Centre
- Service
- Storage
- Entrance
- Gate
- Health
- Office
- Registration
- Distribution
- Generator
- Road

Data sources:
Camp Infrastructure: 28/12/2018, REACH Initiative
Satellite Imagery: WorldView-2 from 26/04/2017
Copyright: DigitalGlobe
Source: US Department of State, Humanitarian Information Unit, NextView License
File: IRQ_Map_IDP_HamamAlAlil-2_8Feb2018
Contact : iraq@reach-initiative.org
Note: Data, designations and boundaries contained on this map are not warranted to be error-free and do not imply acceptance by the REACH partners, associated, donors mentioned on this map.