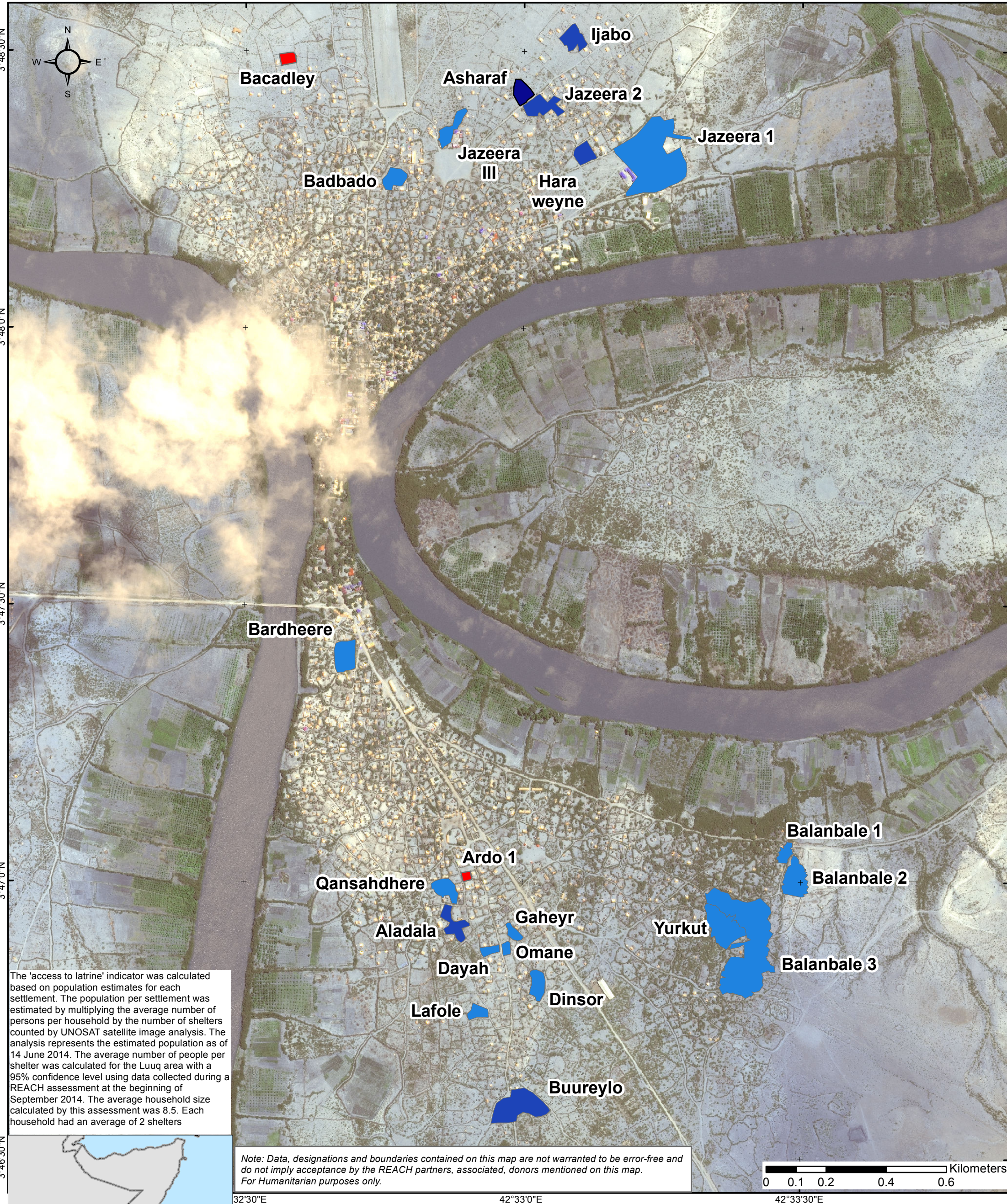


Number of People per Latrine, by Settlement (August 2014)



**Number Of People Per Latrine**

- No Functional Latrines
- 1 - 20
- 21 - 100
- 101 - 200
- 201 - 300

**Standard: Sphere Project (2004), UNHCR (2007).**

Latrines: A maximum of 20 people use each toilet/latrine.

Data sources:  
Facilities and IDP sections: REACH assessment  
Shelter Points: UNOSAT  
Admin level: OCHA COD  
Imagery Date: 14 June 2014  
WorldView-2/DigitalGlobe  
Coordinate System: WGS\_1984\_UTM\_Zone\_38N  
File:REACH\_SOM\_Map\_SomaliaDisplacementCrisis\_Luuq\_LatrineDensity\_26Sep2014\_A3  
Contact : reach.mapping@impact-initiatives.org

**Funded by****USAID**  
FROM THE AMERICAN PEOPLE

  
Humanitarian Aid  
and Civil Protection