



# IDP Camp Profile - Arbat IDP

Sulaymaniyah, Iraq  
May 2017

Management agency: Government and YAO Organization  
Manager/Focal point: Tareq Ahmad Hamalaw  
Phone number: 7501259171  
Email: arbat.idp@gmail.com  
Registration actor: Government and YAO Organization

## Summary

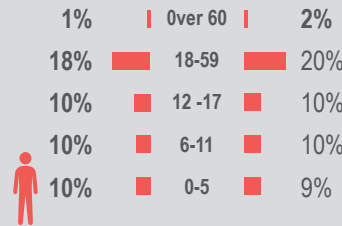
This profile provides an overview of conditions in Arbat IDP camp. Primary data was collected through household surveys on 10/5/2017. Households were randomly sampled to a 95% confidence and 10% margin of error, based on population figures provided by CCCM. In some cases, additional information from camp managers has been used to support findings.

## Camp Overview

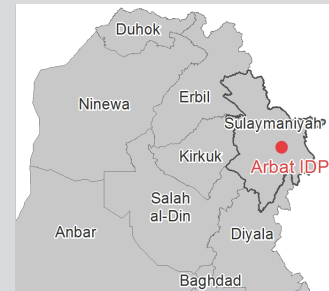
# of individuals: 2,115  
# of households: 439  
Date opened: 27/4/16  
Occupied number: 416  
Ongoing extension: No  
Planned capacity: 416  
Camp area: 188,566m<sup>2</sup>

## Demographics

49% male / 51% female

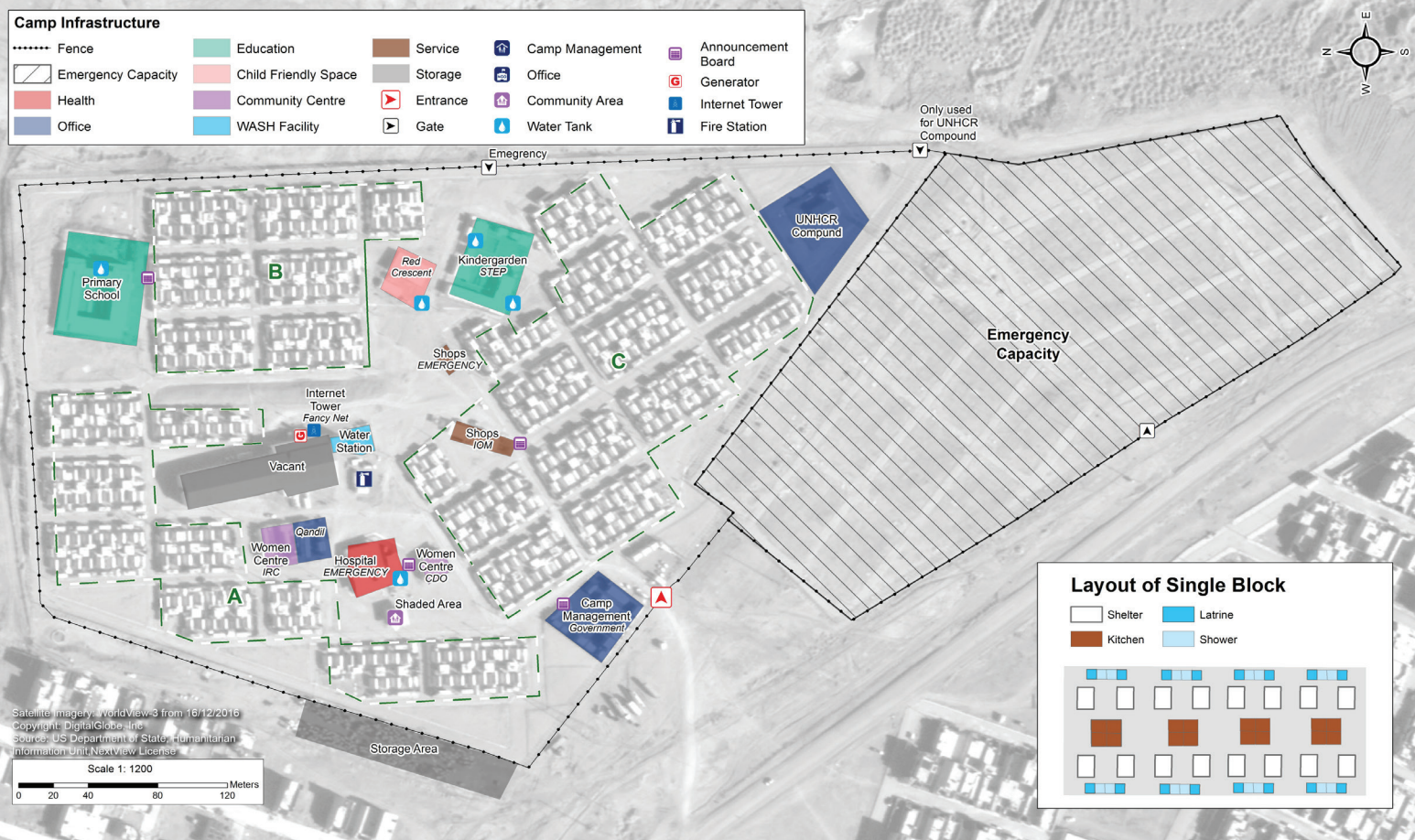


## Location Map



## IDP Camp Map - Arbat IDP

Lat.35° 25' 55.395" N Long. 45° 35' 24.967" E



## Sectoral Minimum Standards

|            |   | Target                | Previous Round    | Current Round     | Achievement |
|------------|---|-----------------------|-------------------|-------------------|-------------|
| Education  | % of children aged 6-11 attending formal school                             | 100%                  | 86%               | 64%               | ●           |
|            | % of children aged 12-17 attending formal school                            | 100%                  | 66%               | 71%               | ●           |
| Food       | % of households accessed Family Food Parcel or equivalent in the past month | 100%                  | 98%               | 97%               | ●           |
| Health     | Health services are available on-site or within walking distance            | Yes                   | Yes               | Yes               | ●           |
| CCCM       | Average open area per household   | min. 30m <sup>2</sup> | 569m <sup>2</sup> | 230m <sup>2</sup> | ●           |
| Protection | % of IDPs registered on an individual basis (MODM/DDM)                      | 100%                  | 99%               | 99%               | ●           |
| Shelter    | Average covered area per person   | min 3.5m <sup>2</sup> | 3.8m <sup>2</sup> | 4.8m <sup>2</sup> | ●           |
|            | Average number of individuals per shelter                                   | max 5                 | 6                 | 7                 | ●           |
| WASH       | # of persons per latrine  | max. 20               | 5                 | 5                 | ●           |
|            | # of persons per shower   | max. 20               | 5                 | 5                 | ●           |
|            | Frequency of solid waste disposal at least weekly                           | Min. weekly           | Yes               | Yes               | ●           |

Targets based on minimum standards agreed with the CCCM Cluster, Iraq. Findings based on household-level data, enumerator field observations, and camp management documentation  
● Minimum standard reached, ● More than 50% minimum standard reached, ● Less than 50% of minimum standard reached or not at all





# IDP Camp Profile - Arbat IDP

Sulaymaniyah, Iraq

May 2017

Management agency: Government and YAO Organization  
 Manager/Focal point: Tareq Ahmad Hamalaw  
 Phone number: 7501259171  
 Email: arbat.idp@gmail.com  
 Registration actor: Government and YAO Organization

## Shelter

### Top observed shelter type

Tent 100%

### Top reported needed shelter items

Sun shading net 97%

Tarpaulin 88%

Timber 33%

### Top reported needed basic items

Mattresses 96%

Blankets 94%

Cooking fuel 49%

### Top reported needed winter item

Clothes 76%

### Top reported needed summer item

Rechargeable fan 88%

## Food Security

### Reported access to food assistance

94% accessed food assistance in past month

63% received Public Distribution System (PDS) in past month

### Top three food consumption coping strategies

Cheaper food 94%

Borrowed food 57%

Eat fewer meals 26%

## WASH

### Latrines and showers

41% reported public or communal latrines

41% public/communal latrines lockable from the inside

41% public/communal latrines with functioning lighting

### Top three reported methods of waste removal

Collected 100%

n/a n/a

n/a n/a

### Reported drinking water sources

100% connection inside the home to collective water storage

0% connection inside the home to private water storage

0% communal water tap outside the shelter

### Access to water

0% reported 24 consecutive hours without access to water in the past month

## Community Organisation

### IDP committees

100% reported awareness of IDP committee(s)

### Complaints mechanism

29% made a complaint about conditions or assistance

## Protection

### Family Separation

0% reported hosting unaccompanied or separated minors

9% reported that other family members intended to join them

### Vulnerable groups

Pregnant / lactating women 3%

Chronically ill individual(s) 8%

Disabled individual(s) 5%

Female headed households 11%

### Intentions

9% planned to move to a different location in next 3 months

### Restrictions

100% reported being able to leave the camp temporarily (e.g. to go to the market, for livelihood opportunities)

## Livelihoods

11% reported as being economically inactive

### Top three income sources\*:

Unskilled labour 39%

Low skilled service 16%

Public sector 12%

\*Households were asked to select all income sources within household.

### Top three reported livelihood coping strategies

Reduce spending 50%

Debt 44%

Support from friends 31%

