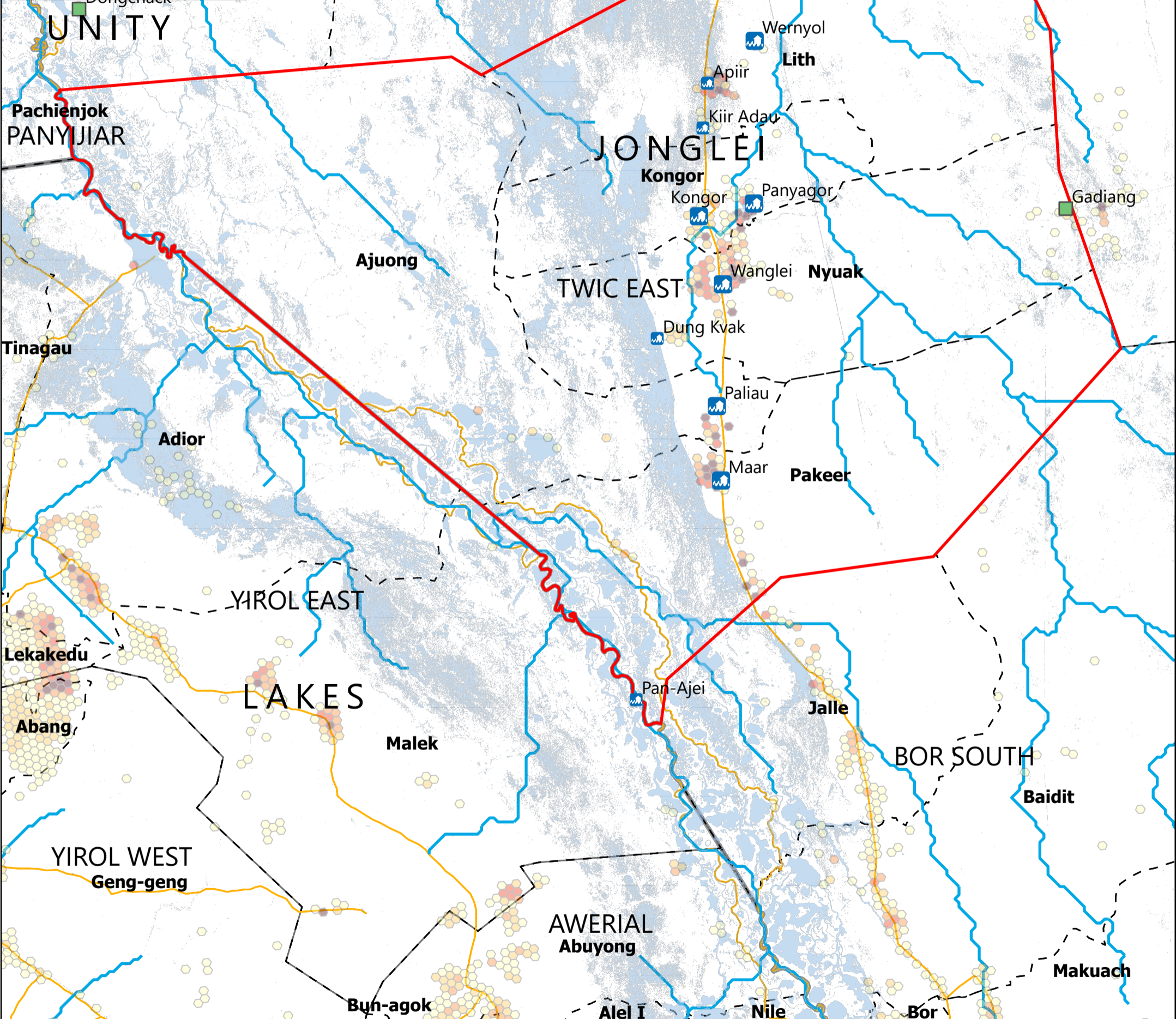


SOUTH SUDAN - Twic East County

Flood overview (September 2025)

For Humanitarian Purposes Only
Production Date: 29 September 2025

Name of Settlement or High Point	Population Estimate
Panyagor	14200
Maar	13600
Wanglei	13000
Paliau	11100
Apiir	7300
Kongor	7100
Gadiang	2200
Kiir Adau	1900
Wernyol	1750
Dung Kvak	1600
Pan-Ajei	1300



Population (Kontur, 2023)

- 1 - 100
- 101 - 250
- 251 - 500
- 501 - 750
- > 750

Legend:

- Flooded settlements
- Flooded Small Towns
- High Ground (OCHA 2024 & UNMISS 2025)
- Roads
- River
- Payam
- Focus County
- County
- State

Map Orientation and Scale:

- North arrow (N, S, E, W)
- Scale bar: 0, 10, 20 Km

Data sources: Source: REACH, OCHA, UNMISS, IOM_DTM, UNOSAT, FEWSNET
 Coordinate System: Name: GCS WGS 1984
 File: REACH_SSD_Map_Jonglei_Twic_East_Flood_29_Sept_2025
 Contact: reach.mapping@impact-initiatives.org

Note: Data, designations and boundaries contained on this map are not warranted to be error-free and do not imply acceptance by REACH partners, associates or donors mentioned on this map.

