

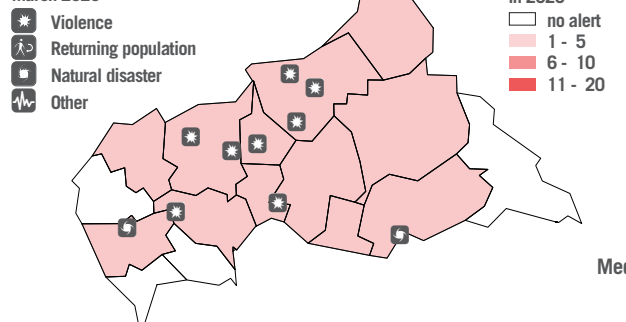


The Rapid Response Mechanism (RRM) is designed to monitor humanitarian action, conduct multisector needs assessments (MSAs) and to implement several types of emergency responses, including distributions of essential non-food items (NFI) and High Emergency Biscuits (HEB), emergency shelter, water, sanitation and hygiene (WASH) interventions, as well as cash transfers. Currently, the RRM is made possible through the support of the European Union Civil Protection and Humanitarian Aid Office (ECHO), the Office of U.S. Foreign Disaster Assistance (OFDA), the British Department for International Development (DFID), the Swedish International Development Cooperation Agency (SIDA) and the Swiss Agency for Development and Cooperation (SDC). All RRM products are available on the [Humanitarian Response](#) portal.

## Alerts received or sent by the RRM in 2020

### Alert distribution in March 2020 and in 2020:

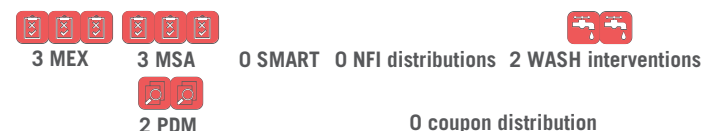
Location and types of alerts in March 2020



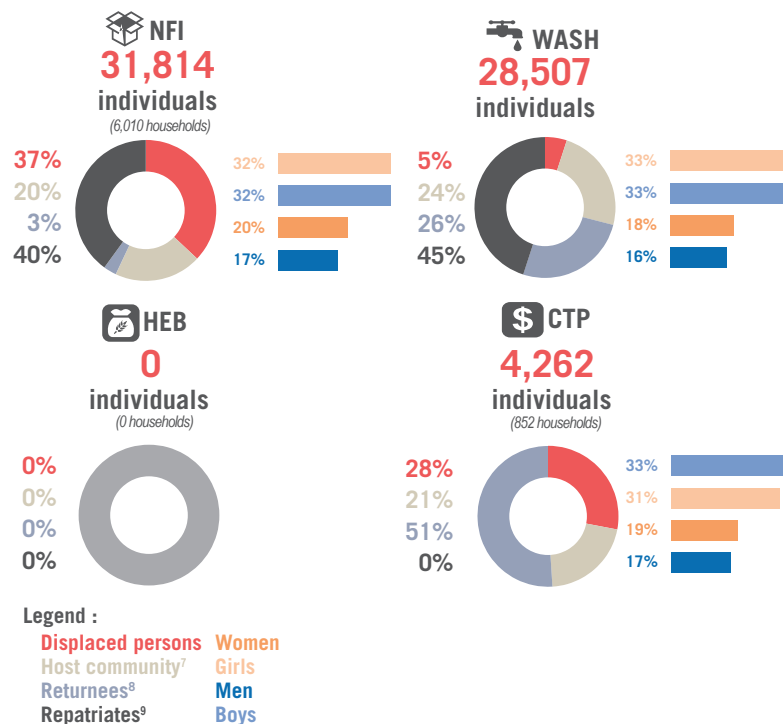
### Number of alerts per month in 2020:



### RRM activities in March 2020:



## Beneficiaries in 2020

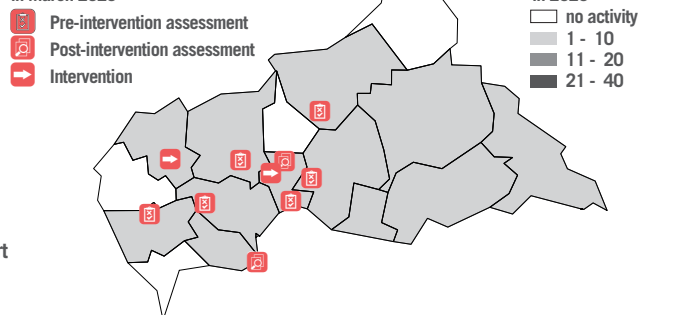


## Overview of RRM activities in 2020

### Activity distribution in March 2020 and in 2020:

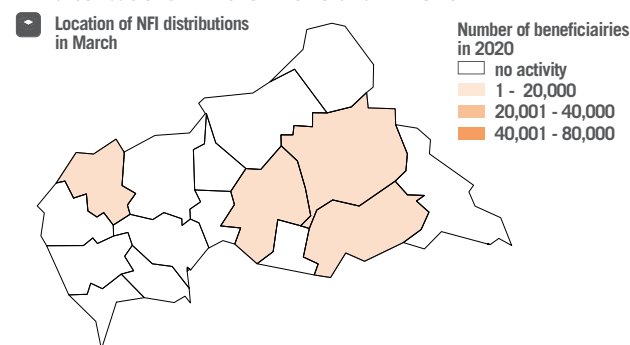
(MEX<sup>1</sup>, MSAs, SMART<sup>2</sup>, NFI and HEB distributions, WASH interventions, CTP<sup>3</sup>, PDM<sup>4</sup>)

Location and types of activities in March 2020

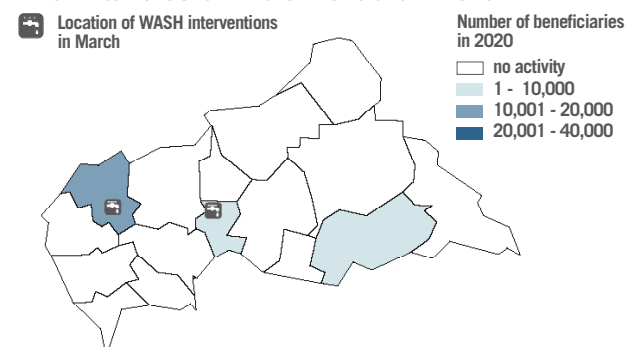


## Distribution of beneficiaries

### NFI distributions in March 2020 and in 2020:



### WASH interventions in March 2020 and in 2020:



## Activities in 2020

Ongoing activities are not taken into account.

MEX	7	Cash distributions	1
MSAs	9	Sensitization sessions on hygiene	42
MSA-R <sup>6</sup>	0	Emergency latrines	0
NFI distributions	5	Rehabilitations of water sources	11
WASH interventions	6	PDM	7
HEB distribution	0	Distributed Menstrual Hygiene Kits	4,885
Coupon distributions	1	Rapid SMART	3

<sup>1</sup> Exploratory missions. <sup>2</sup> Nutrition screenings. <sup>3</sup> Cash transfer programming. <sup>4</sup> Post-distribution monitoring. <sup>5</sup> Based on the first intervention (NFI, WASH, HEB or cash transfer) for any alert raised in 2020. <sup>6</sup> MSA-R are not triggered following a RRM alert. MSA-R aim at gathering information on areas not recently affected and/or not recently accessed by humanitarian actors. <sup>7</sup> The term 'host community' refers to individuals that have not been displaced as the result of a humanitarian-related event. <sup>8</sup> The term 'returnees' refers to people who have come back to their pre-crisis location following a period of internal displacement. <sup>9</sup> The term 'repatriates' refers to former refugees who have returned from neighbouring countries.